

**ELECTRONIC FAUCET  
K-13672  
ALSO K-13670**

**ADA**

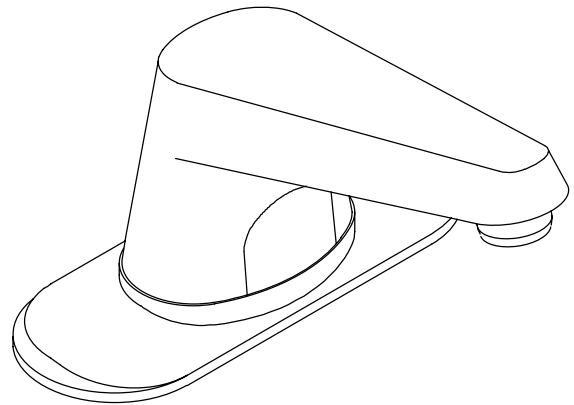
**FEATURES**

- Brass construction
- Single supply for single-hole mounting
- Electronic infrared sensor
- 4-7/8" spout
- Available with standard or vandal-resistant Water-Guard® aerator
- 2.0 gallons per minute
- Includes four alkaline D-cell batteries
- Available with or without escutcheon plate

**CODES/STANDARDS APPLICABLE**

Specified model meets or exceeds the following:

- ASME/ANSI A112.18.1M
- CSA B125
- Energy Policy Act of 1992
- IAPMO/UPC
- Listed in the State of Massachusetts


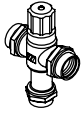


**COLORS/FINISHES**

- CP Polished Chrome
- PB Polished Brass
- Other Refer to Faucets Price Book for additional finishes

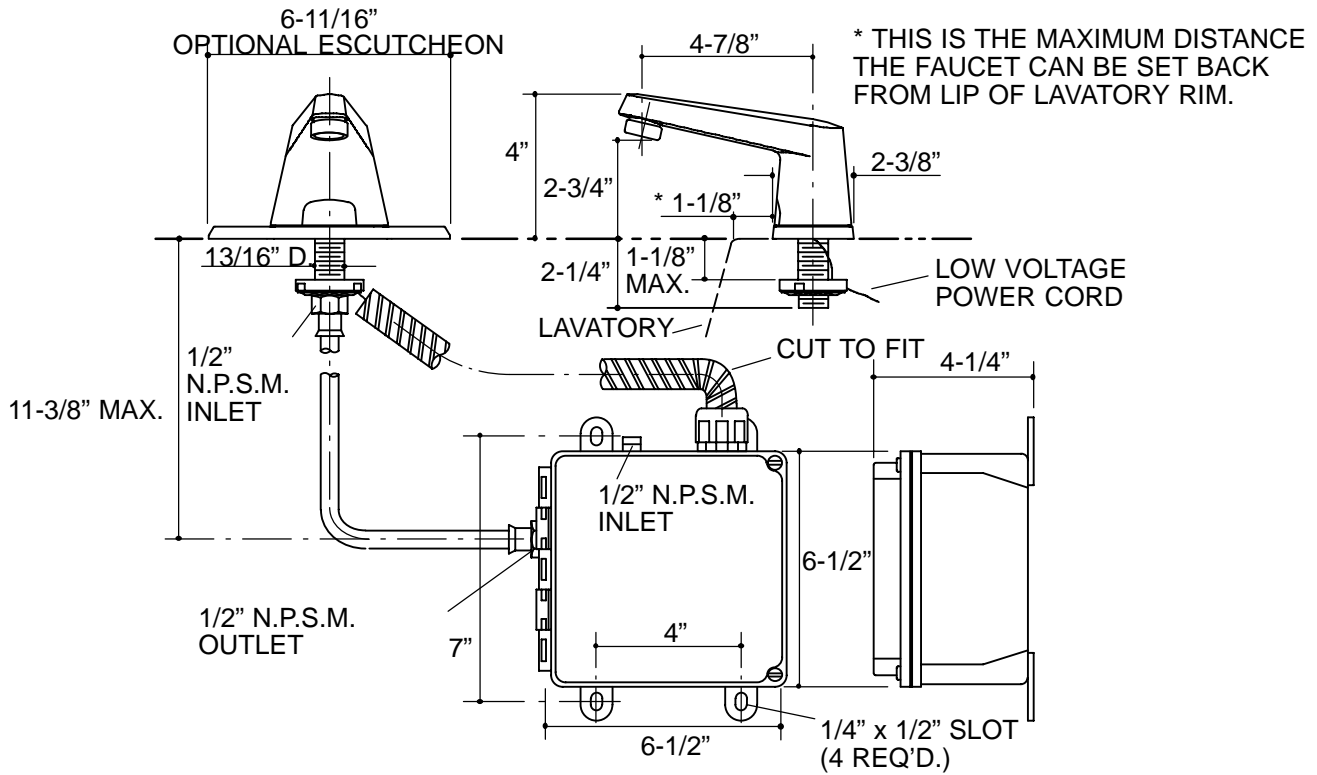
**SPECIFIED MODEL:**

Model	Description	<input type="checkbox"/> CP	<input type="checkbox"/> PB	<input type="checkbox"/> Other_____
K-13670	Less Escutcheon Plate; With Standard Aerator	<input type="checkbox"/>	<input type="checkbox"/>	<input type="checkbox"/>
K-13670-2E	Less Escutcheon Plate; With Vandal-Resistant Aerator	<input type="checkbox"/>		
K-13672	With Escutcheon Plate and Standard Aerator	<input type="checkbox"/>	<input type="checkbox"/>	<input type="checkbox"/>
K-13672-2E	With Escutcheon Plate and Vandal-Resistant Aerator	<input type="checkbox"/>		

Optional Accessories			
K-7715	Lavatory Grid Drain	<input type="checkbox"/> CP <input type="checkbox"/> PB <input type="checkbox"/> Other_____	
K-13601	Thermostatic Mixing Valve		<input type="checkbox"/> NA

**PRODUCT SPECIFICATION:**

Battery-powered electronic faucet shall be of brass construction. Faucet shall feature an electronic infrared sensor. Product shall be less drain. Product shall include single supply for single-hole mounting, 4-7/8" spout, and four alkaline D-cell batteries. Optional features shall be with or without escutcheon plate, and standard or vandal-resistant aerator. Faucet shall be Kohler Model K-\_\_\_\_\_-\_\_\_\_\_-\_\_\_\_\_.



316

## PRODUCT DIAGRAM