

**SHOWER FAUCET TRIM
K-15372
PROJECT PACK**

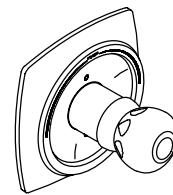
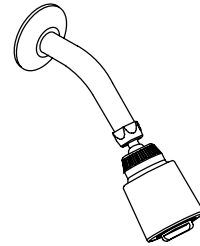
FEATURES

- Metal construction
- Sculptured acrylic handle
- Variety of valve options
- Packaged 12 per case

CODES/STANDARDS APPLICABLE

Specified model meets or exceeds the following:

- ASME/ANSI A112.18.1M

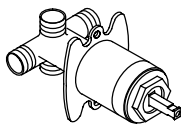
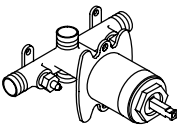
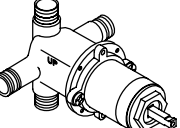
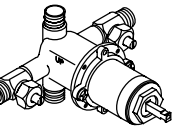


COLORS/FINISHES

- CP Polished Chrome
- PB Polished Brass
- Other Refer to Faucets Price Book for additional finishes

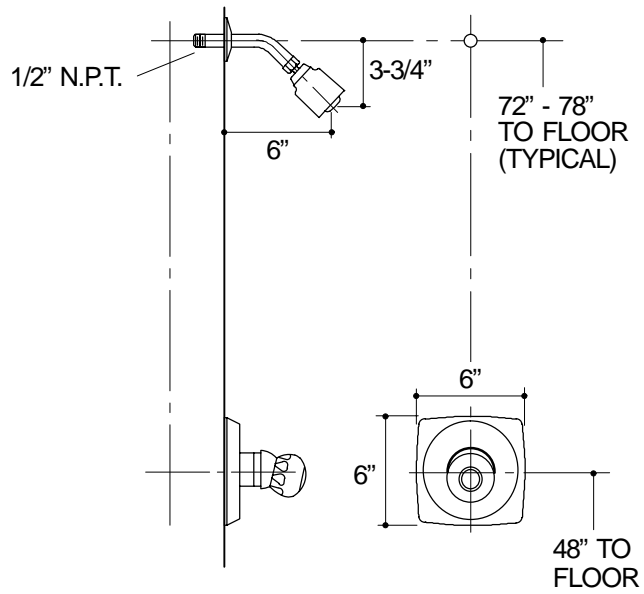
SPECIFIED MODEL: For complete faucet, both faucet trim and base valve must be specified.

Model	Description			
K-15372	Coralais Shower Faucet Trim	<input type="checkbox"/> CP	<input type="checkbox"/> PB	<input type="checkbox"/> Other_____

Required Accessory					
K-15379-K	Non-Pressure Balancing Base Valve, Less Screwdriver Stops	<input type="checkbox"/> NA			
K-15380-K	Non-Pressure Balancing Base Valve With Screwdriver Stops		<input type="checkbox"/> NA		
K-15381-K	Pressure-Balancing Base Valve, Less Screwdriver Stops			<input type="checkbox"/> NA	
K-15382-K	Pressure-Balancing Base Valve With Screwdriver Stops				<input type="checkbox"/> NA

PRODUCT SPECIFICATION:

Single-control shower valve faucet trim shall be of metal construction. Trim shall include showerhead with arm and flange, and faceplate with sculptured acrylic handle. Trim shall be Kohler Model K-15372-_____-_____- and valve shall be Kohler Model K-_____-K-NA. Project Pack valves and trim are packaged 12 per case.



332

PRODUCT DIAGRAM