

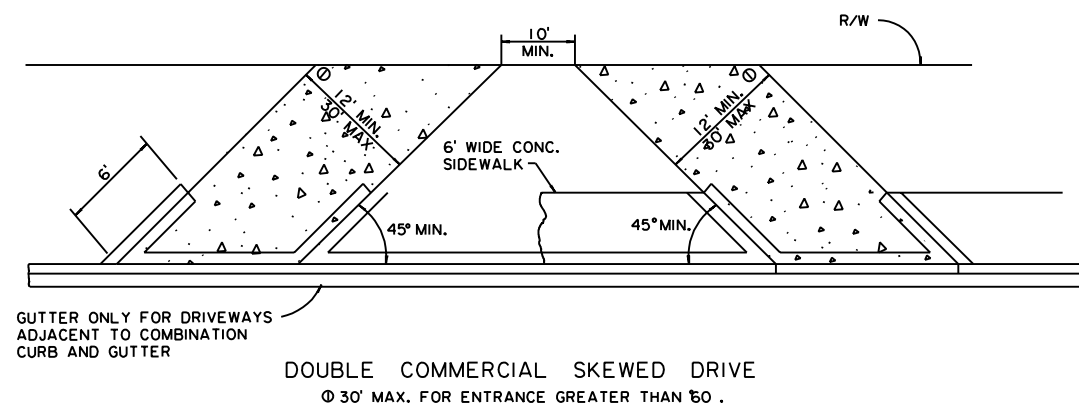
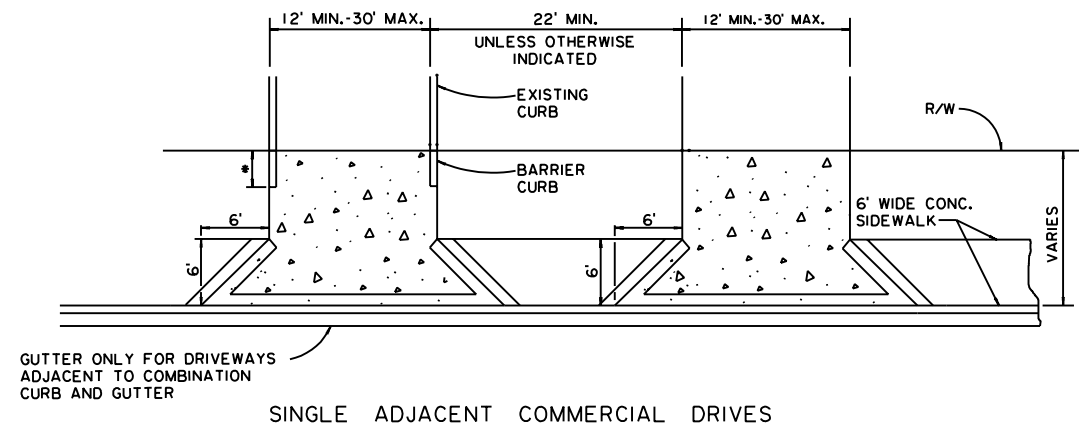
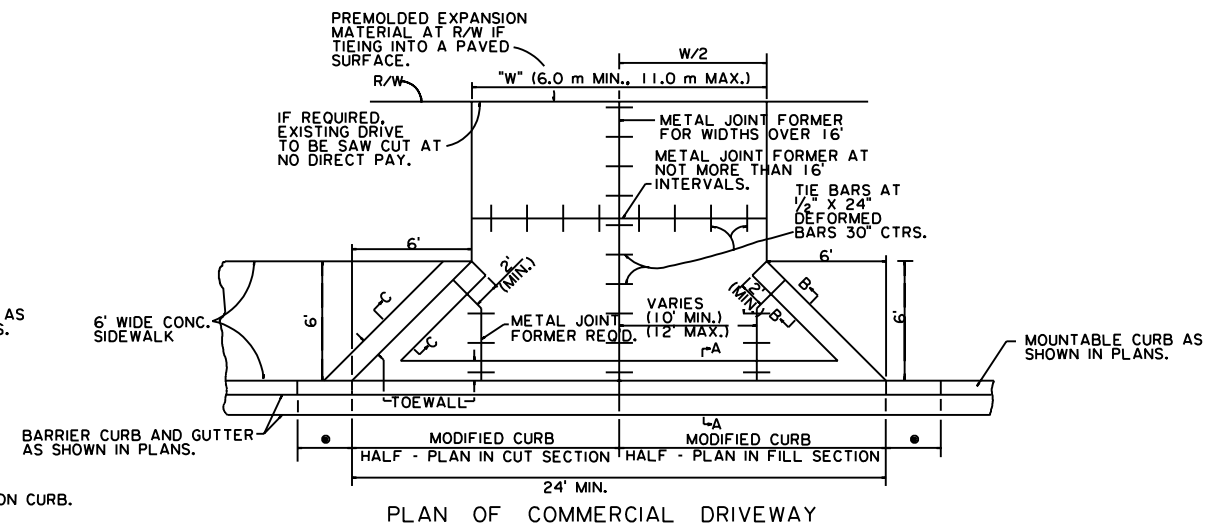
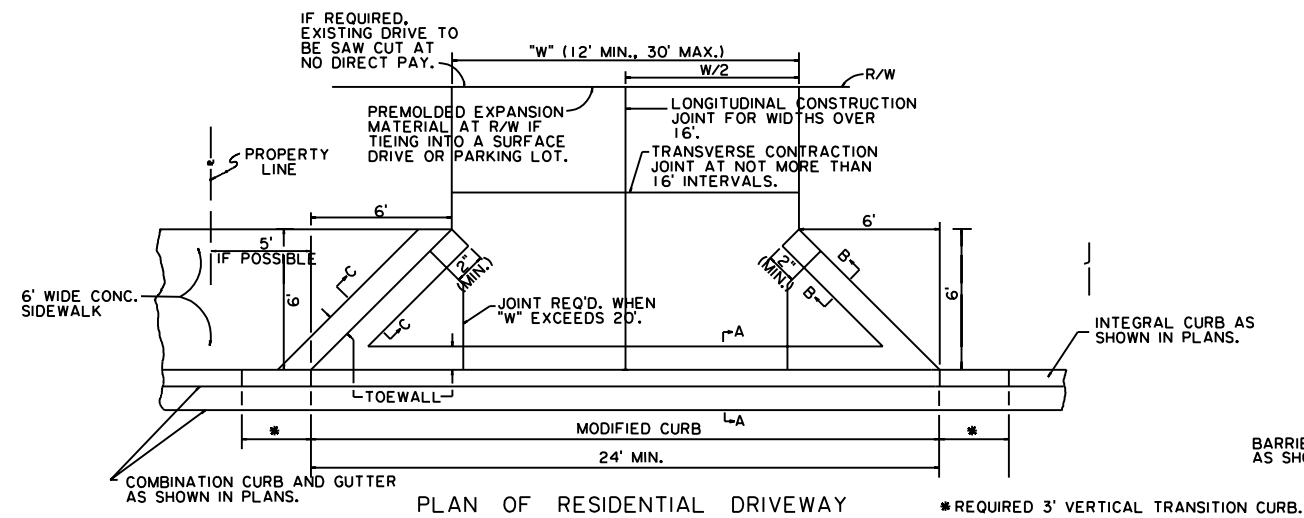
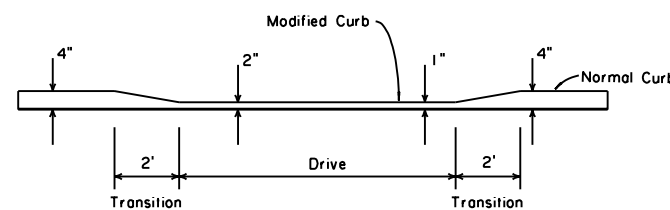


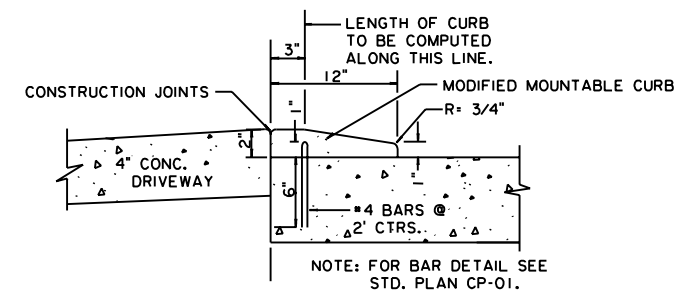
SHEET NUMBER	2
DESIGNED	
CHECKED	
DATE	
BY	
REVISION DESCRIPTION	
NO.	
DATE	
IND.	
	
	
ROAD DESIGN	



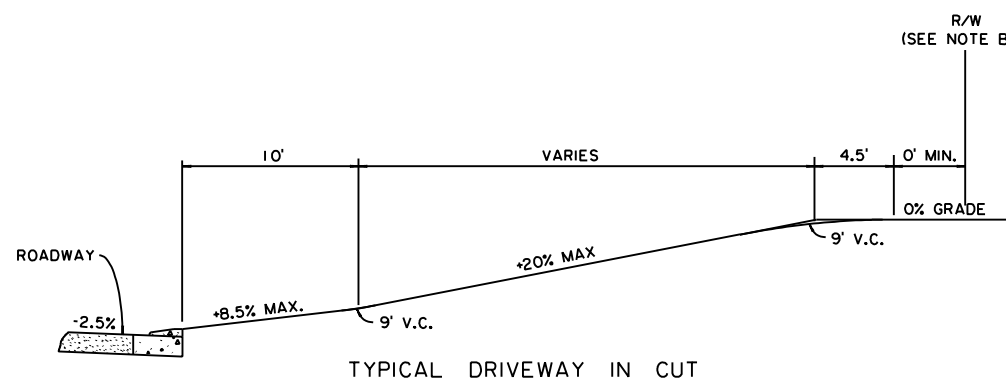
* REQUIRED 3' VERTICAL CURB TRANSITION. CURB HEIGHT TO BE TRANSITIONED TO MATCH EXISTING CURB.



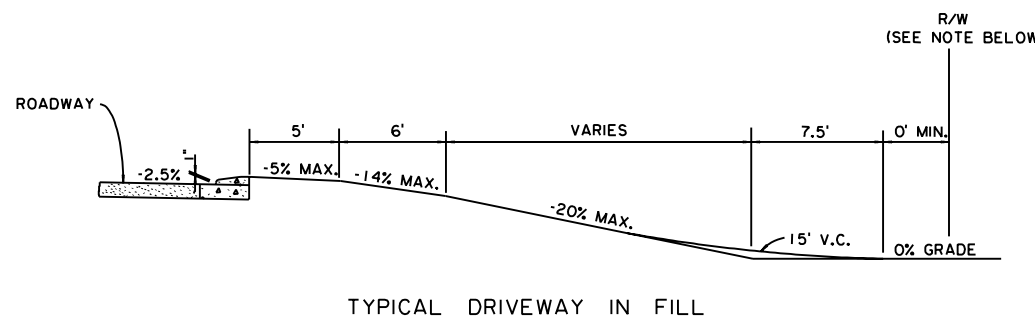
ELEVATED VIEW OF MODIFIED MOUNTABLE CURB
(To Be Used at all Driveways)



DETAIL SHOWING CONSTRUCTION JOINT AT CONCRETE DRIVEWAYS



TYPICAL DRIVEWAY IN CUT



TYPICAL DRIVEWAY IN FILL

NOTE: DRIVEWAY GRADES SHOWN ARE MAXIMUM. IF R/W IS NOT SUFFICIENT TO CONSTRUCT DRIVEWAY, R/W AGREEMENT SHOULD BE SECURED TO PERMIT CONSTRUCTION OF DRIVEWAY AS SHOWN.

MAXIMUM CHANGE IN GRADES IS APPROXIMATELY 12% AT CREST AND 11% AT SAGS FOR ANY COMBINATION OF GRADES WITHOUT VERTICAL CURVES. THESE MAXIMUM GRADE CHANGES SHOULD BE AT LEAST 10' APART.

Figure 5-10: Standard Driveway Adjacent to Mountable Curb
Sheet 2 of 2 - Sections (A-A, etc) can be found in Figure 5-9.