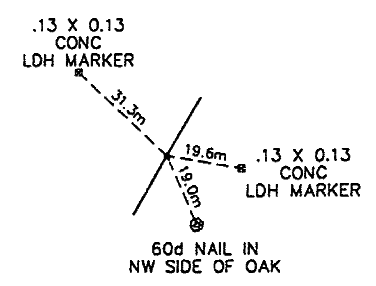
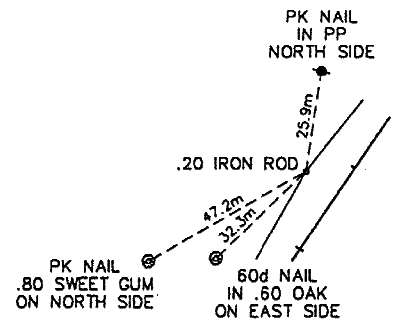


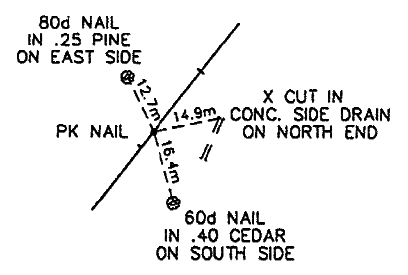
ssplot date and plot times



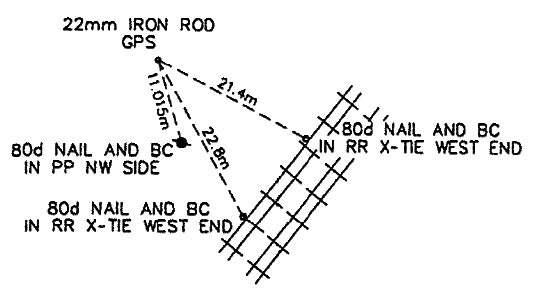
P.O.T. STA. 10+050.000
(N170275.7701, E1035619.1486)



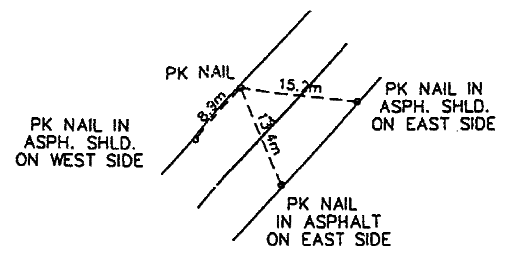
P.I. STA. 10+317.336



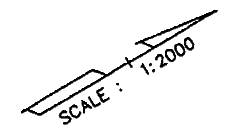
P.T. STA. 10+580.271



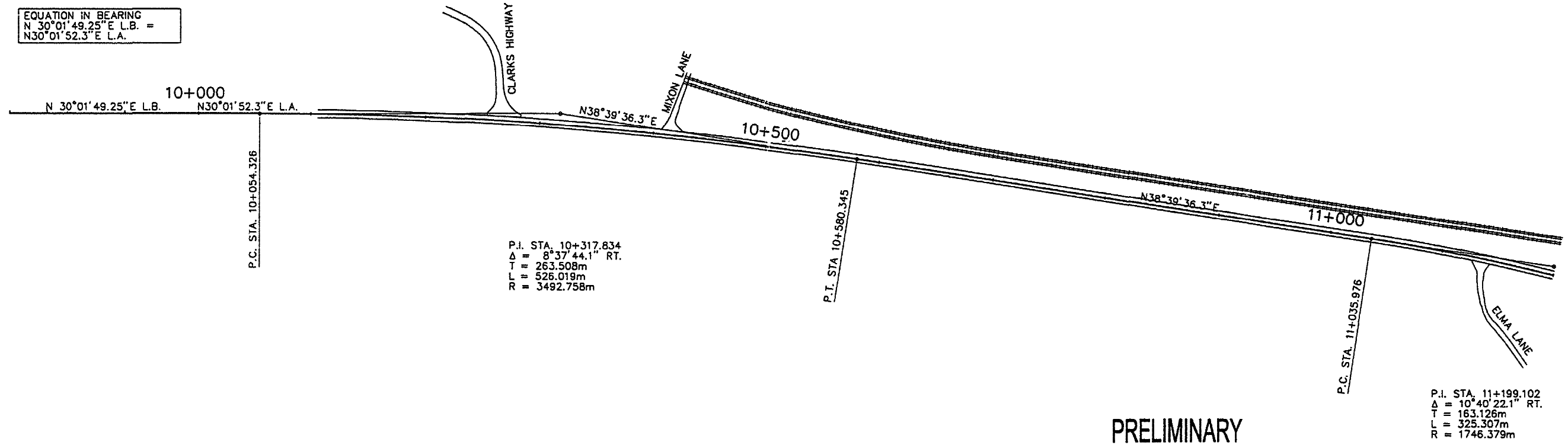
STA. 11+017.813, 47.533m LT.
(N171084.7100, E1036153.9740)



STA. 11+150.138, 6.180m LT.
(N171160.1180, E1036272.0520)



EQUATION IN BEARING
N 30°01'49.25"E L.B. =
N30°01'52.3"E L.A.



PRELIMINARY

TBM
Sta. 10+134.104 - 19.56m Lt.
60d NAIL IN PP, EAST SIDE
ELEV. 44.061

TBM
Sta. 10+427.903 - 32.02m Lt.
60d NAIL IN .50 OAK,
BASE TREE EAST SIDE
ELEV. 44.318

TBM
Sta. 10+644.194 - 35.88m Rt.
60d NAIL IN .60 SWEETGUM,
SOUTH SIDE
ELEV. 43.721

TBM
Sta. 10+914.823 - 38.43m Lt.
60d NAIL IN PP, SOUTH SIDE
ELEV. 47.862

BM
Sta. 11+087.335 - 17.65m Lt.
D 234 1960, U.S.C.G.S.
ELEV. 45.520

P.I. STA. 10+317.834
Δ = 8°37'44.1" RT.
T = 263.508m
L = 526.019m
R = 3492.758m

P.I. STA. 11+199.102
Δ = 10°40'22.1" RT.
T = 163.126m
L = 325.307m
R = 1746.379m

STATION	NORTHING	EASTING	STATION	NORTHING	EASTING	STATION	NORTHING	EASTING
BEGIN STA. 10+000.000	170232.4824	1035594.1250						
P.C. STA. 10+054.326	170279.5158	1035621.3139	P.C. STA. 12+356.581	172087.3452	1037024.9262	P.C. STA. 16+792.809	175977.7336	1038668.9968
P.I. STA. 10+317.834	170507.6485	1035753.1920	P.I. STA. 12+445.246	172156.5016	1037080.4141	P.I. STA. 16+889.130	176063.7626	1038712.3183
P.T. STA. 10+580.345	170713.4127	1035917.8051	P.T. STA. 12+533.880	172228.1199	1037132.6858	P.T. STA. 16+983.721	176159.1608	1038725.6200
P.C. STA. 11+035.976	171069.1989	1036202.4369	P.C. STA. 12+540.653	172233.5904	1037136.6785	P.C. STA. 17+267.390	176440.1115	1038764.7940
P.I. STA. 11+199.102	171196.5782	1036304.3414	P.I. STA. 12+616.832	172295.1234	1037181.5895	P.I. STA. 17+408.877	176580.2432	1038784.3331
P.T. STA. 11+361.284	171302.8811	1036428.0735	P.T. STA. 12+692.987	172354.6398	1037229.1402	P.T. STA. 17+541.040	176682.2782	1038882.3512
P.C. STA. 11+451.225	171361.4926	1036498.2948	P.C. STA. 14+183.875	173519.4206	1038159.7484	P.C. STA. 17+693.080	176791.9239	1038987.6805
P.I. STA. 11+557.176	171430.5371	1036576.6598	P.I. STA. 14+480.261	173750.9769	1038344.7516	P.I. STA. 17+835.906	176894.9242	1039086.6259
P.T. STA. 11+662.545	171512.9544	1036643.2412	P.T. STA. 14+736.010	174039.7794	1038278.1357	P.T. STA. 17+970.604	177035.3746	1039112.5665
P.C. STA. 11+800.266	171620.0846	1036729.7872	P.C. STA. 15+077.611	174372.6400	1038201.3572	P.C. STA. 18+181.849	177243.1061	1039150.9336
P.I. STA. 11+888.068	171688.3832	1036784.9627	P.I. STA. 15+196.055	174488.0532	1038174.7357	P.I. STA. 18+291.381	177350.8163	1039170.8272
P.T. STA. 11+974.555	171769.9174	1036817.5392	P.T. STA. 15+313.062	174606.3877	1038179.8209	P.T. STA. 18+391.370	177418.8888	1039256.7955
P.C. STA. 12+043.142	171833.6085	1036842.9867	P.C. STA. 15+625.547	174918.5848	1038193.2369	END STA. 18+526.663	177502.5244	1039362.9829
P.I. STA. 12+101.013	171887.3495	1036864.4586	P.I. STA. 15+750.704	175043.6262	1038198.6104			
P.T. STA. 12+158.038	171932.4878	1036900.6755	P.T. STA. 15+872.107	175155.4098	1038254.9010			

Figure 8-40

ssins is the pathname including directory path and design file name

SHEET NUMBER	67A
DESIGNED	CALDWELL
CHECKED	
DATE	
REVISION DESCRIPTION	
NO.	
DATE	
BY	
MD	JSM
CMH	CMH
FEDERAL PROJECT	
STATE PROJECT	015-06-0030
PARISH	

GRAYSON - COLUMBIA
U.S. 165

ROAD DESIGN