

**DAMMON ENGINEERING, INC.**

**EMMETT DAMMON**

**ARCHITECT ROBERT WILTSE**

1095 FLORIDA AVENUE  
SLIDELL, LA. 70458  
985-649-5832

WEBSITE:  
WWW.DAMMONENGINEERING.COM

EMAIL:  
DAMMONENG@BELLSOUTH.NET

ARCHITECTURE  
ENGINEERING  
STUDIES  
PLANNING  
INVESTIGATION  
EXPERT WITNESS

### GENERATOR INSTALLATION

N.O. PRIVATE PATROL SERVICES INC.  
1620 MLK Blvd.  
New Orleans  
Louisiana  
70121

### ELECTRICAL PLAN

REV:

SCALE: AS NOTED

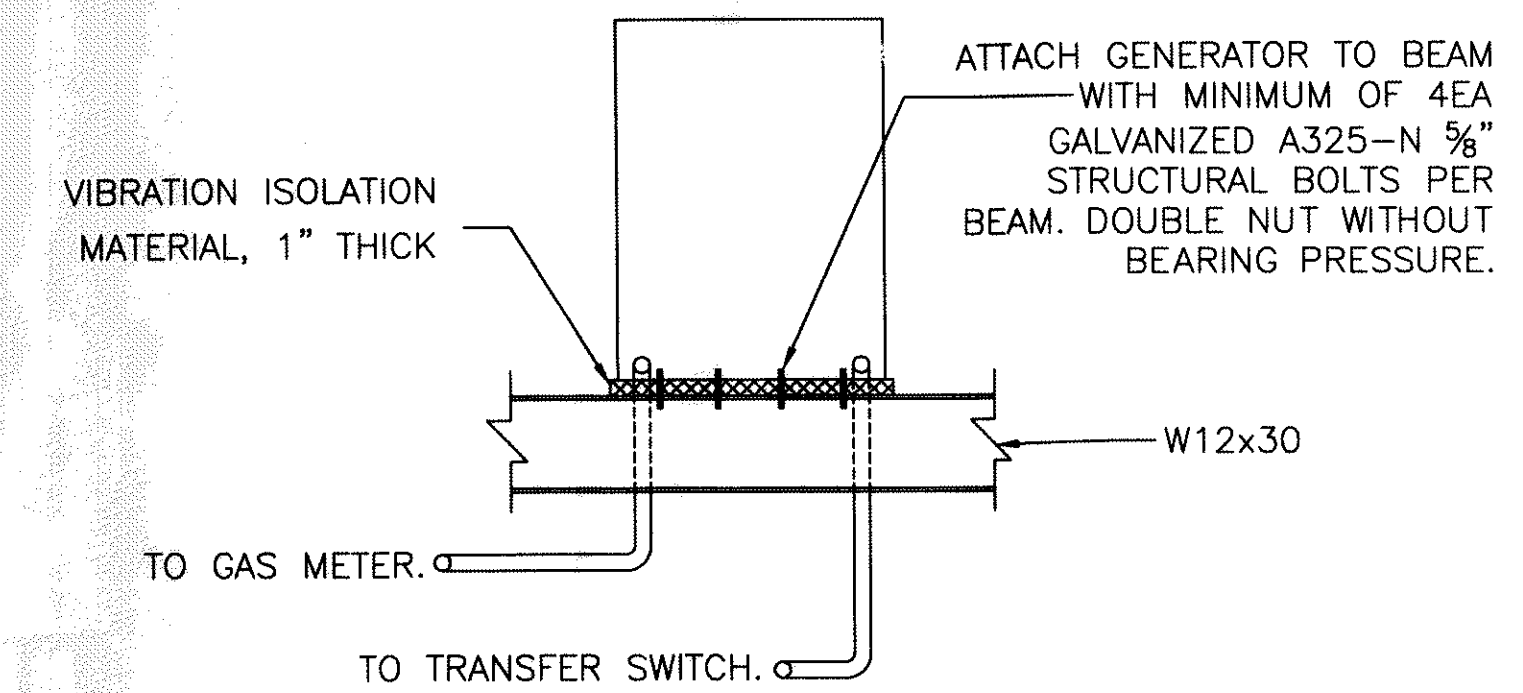
JOB: 2060

DATE: 4-1-10

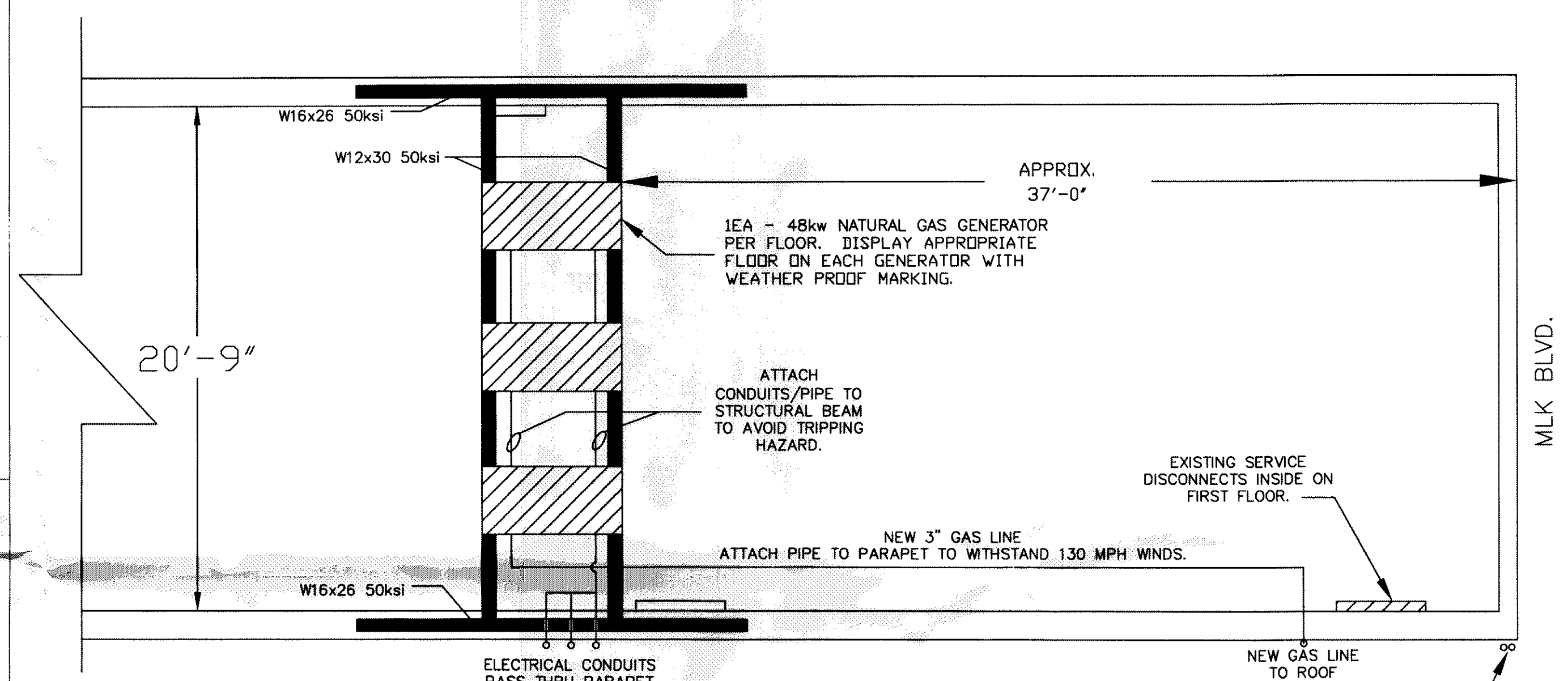
SHEET 2

# E-1

OF 3

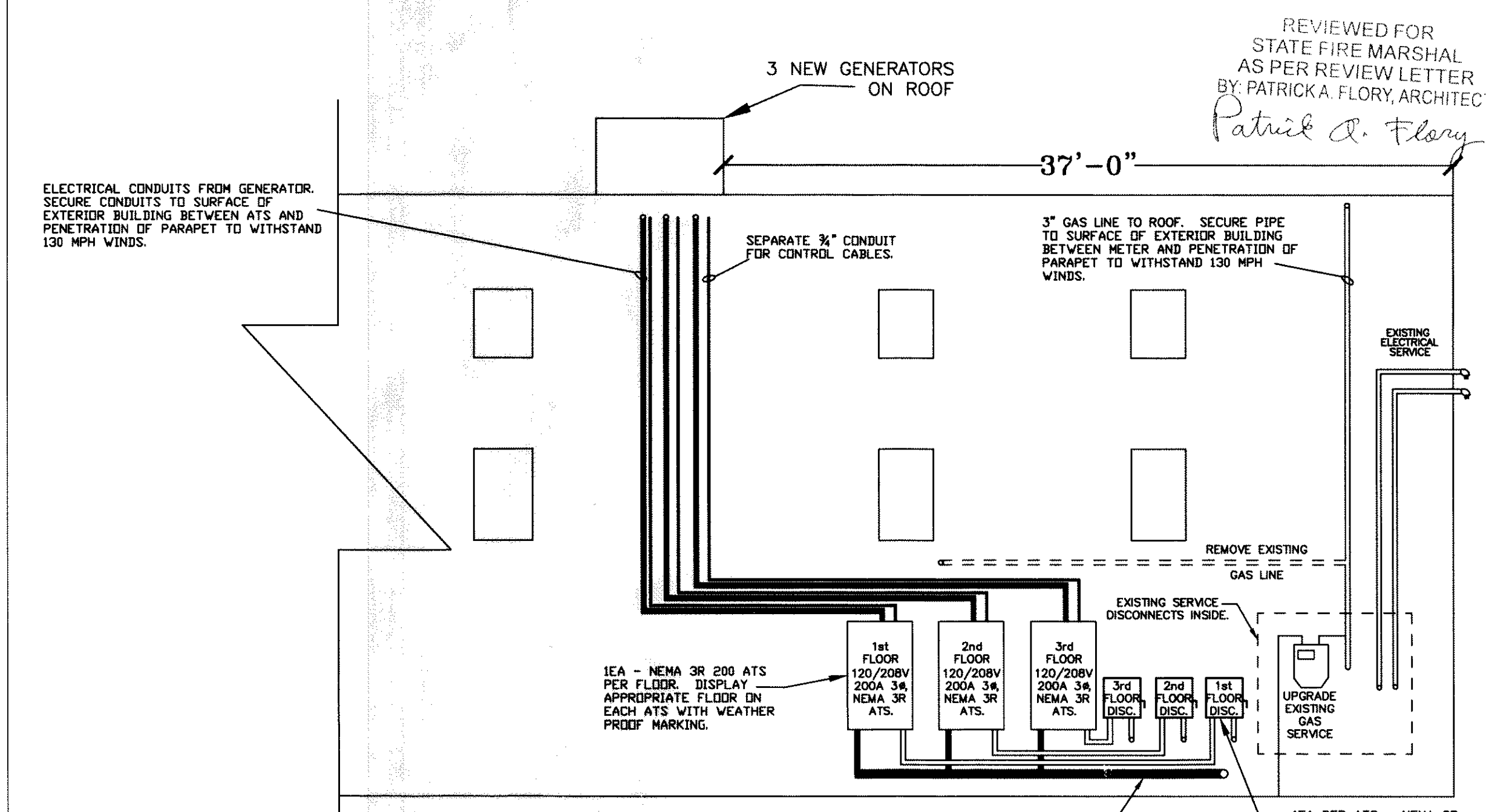


**3 TYPICAL GENERATOR SETUP**  
Scale: Not To Scale

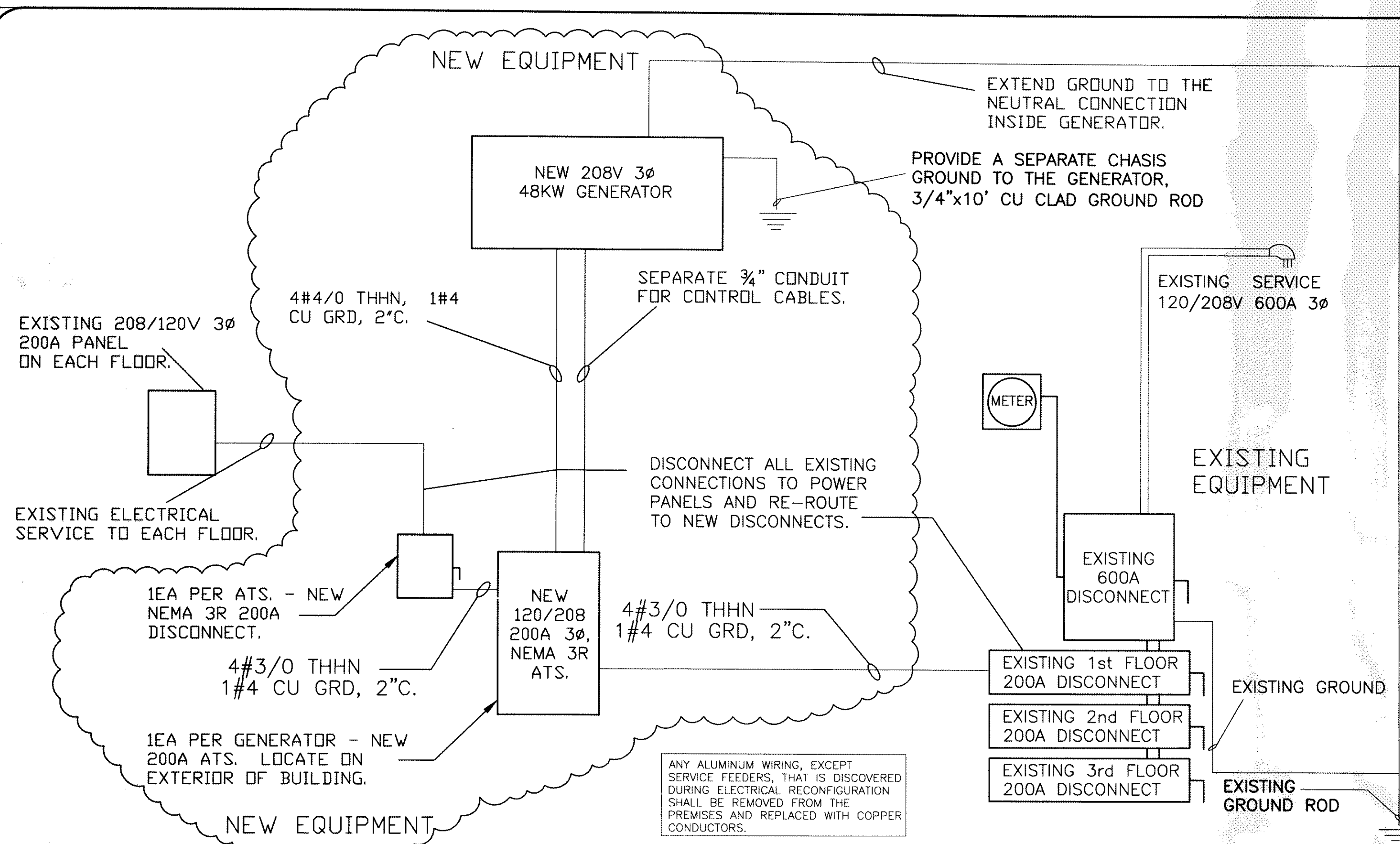


**2 ROOFTOP PLAN**  
Scale: Not To Scale

*See review letter for comments*



**1 SOUTHEAST ELEVATION**  
Scale: Not To Scale



**4 Online Diagram**  
Scale: Not To Scale

#### ELECTRICAL NOTES:

1. ATTACH SERVICE DISCONNECTS, ATS, GENERATORS AND ALL CONDUITS TO WITHSTAND 130 MPH.
2. ALL WORK SHALL CONFORM TO THE LATEST EDITION OF THE NATIONAL ELECTRICAL CODE, THE GOVERNING ELECTRICAL CODE, AND ALL OTHER INSPECTION DEPARTMENTS HAVING JURISDICTION. OBTAIN CERTIFICATES OR APPROVAL WHERE REQUIRED.
3. ALL MATERIALS FURNISHED SHALL BE NEW AND SHALL BE U.L. LISTED.
4. THE DRAWINGS INDICATE SIZE AND GENERAL LOCATION OF WORK. SCALE DIMENSIONS SHALL NOT BE USED.
5. PRIOR TO BIDDING, CONTRACTOR SHALL VISIT THE JOB SITE AND FAMILIARIZE THEMSELVES WITH THE EXISTING CONDITIONS.
6. ELECTRICAL CONTRACTOR SHALL COORDINATE HIS WORK WITH OTHER TRADES AND WITH OTHER CONTRACTORS WHOSE WORK MAY AFFECT THIS INSTALLATION.
7. PERFORM TEST REQUIRED BY THE OWNER OR THE ENGINEER IN CONNECTION WITH THE OPERATION OF THE ELECTRICAL SYSTEM IN THE BUILDING.
8. ALL TESTS SHALL BE MADE IN ACCORDANCE WITH THE LATEST STANDARD OF THE IEEE AND THE NATIONAL ELECTRICAL CODE.
9. MINIMUM CONDUCTOR SIZE SHALL BE #12, 600V INSULATION. MINIMUM SIZE CONDUIT SHALL BE 3/4" RIGID ALUMINUM FOR EXTERIOR USE.
10. CONTRACTOR SHALL INSTALL WIRING AND OTHER CIRCUIT COMPONENTS TO MATCH EQUIPMENT ACTUALLY INSTALLED.
11. INSTALL GROUND FAULT RECEPTACLES AT EXTERIOR LOCATIONS. EXTERIOR RECEPTACLES SHALL ALSO BE WEATHERPROOF.
12. BONDING AND GROUNDING SHALL BE IN ACCORDANCE WITH NFPA 70:230-63, NFPA 250-23, 250-71, & 250-72.
13. GROUND NEUTRAL IN ACCORDANCE WITH NFPA 70:250-23b.
14. FUSES SHALL BE ITT CLASS K5, 250 VOLT, 200,000 AMP INTERRUPTING CAP.
15. THE ELECTRICAL CONDUIT SHALL TERMINATE WITH AN LB OR LL AND EXTEND TO THE GENERATOR WITH NOT MORE THAN 6 FEET OF FLEXIBLE CONDUIT.

ANY ALUMINUM WIRING, EXCEPT SERVICE FEEDERS, THAT IS DISCOVERED DURING ELECTRICAL RECONFIGURATION SHALL BE REMOVED FROM THE PREMISES AND REPLACED WITH COPPER CONDUCTORS.