

Hardware Schedule

Project ID: SG0034

North Oaks Cafeteria Renovation & Emergency

Heading #: 01

3670 AL

	1	SGL	Door: 1X100B	EXTERIOR FROM DINNING 1X101	LHR	
			3' 6" x 7' 0" x 1 3/4" Other/			
1	EA	Continuous Hinge	MCK-12HD 83"		CL	(HC-1) McKinney
1	EA	Rim Exit Device	ED4200S O859 W048 7P		630	(ED-11) Corbin Russwin
1	EA	Door Pull	BF159 C		US32D	(PP-5) Rockwood
1	EA	Surface Closer	DC6210 A11		689	(CL-1) Corbin Russwin
1	EA	Threshold	2005AT 42"			(TH-3) Pemko
1	EA	Rain Guard	346C 46"			(GA-5) Pemko
1	EA	Sweep	345ANB 42"			(SW-2) Pemko

ALOM

Heading #: 02

PR6070 AL

	1	PR	Door: 1X104	CART/TRASH 1X104 FROM CORR 1X116A	RHR/LHR	
			2-3' 0" x 7' 0" x 1 3/4" Other/			
2	EA	Continuous Hinge	MCK-12HD SER-12 83"		CL	(HC-2) McKinney
2	EA	Concealed Vert Rod Exit	ED4800 O859 M92 M94 7P		630	(ED-2) Corbin Russwin
2	EA	Door Pull	BF159 C		US32D	(PP-5) Rockwood
2	EA	Door Stop	442		US26D	(ST-1) Rockwood
2	EA	ElectroLynx Harness	QC-C006P			(EA-1) McKinney
2	EA	ElectroLynx Harness	QC-C1500P			(EA-3) McKinney
1	EA	Controller	781N-120			(EC-5) Corbin Russwin

ALOM

Heading #: 03

PR6070 WD

	1	PR	Door: 1X111B	CORR 1C117 FROM TRAY 1X111	RHR/LHR	20
			2-3' 0" x 7' 0" x 1 3/4" WDD/HMF			
2	EA	Continuous Hinge	MCK-25HD SER-12 83"		CL	(HC-4) McKinney
2	EA	Fire Rated Conc Vert Rod	ED5860B L955 M92 M94 M55 7P		630	(ED-4) Corbin Russwin
2	EA	Kickplate	K1050 8" x 34" 4BE CSK		US32D	(KP-1) Rockwood
			VERIFY KP REQUIRED IN LIEU OF MOP PLATE			
2	EA	Kickplate	K1050 36" x 34" 4BE CSK		US32D	(KP-2) Rockwood
2	EA	Wall Stop	409		US26D	(ST-2) Rockwood
1	EA	Gasketing	S88BL 20"			(GA-4) Pemko
1	EA	Edge Guard	306B -UL 84" CUTOUT-1		US32D	(AS-1) Rockwood
1	EA	Astragal	18041CNB 84"			(AS-2) Pemko
2	EA	ElectroLynx Harness	QC-C006P			(EA-1) McKinney
2	EA	ElectroLynx Harness	QC-C1500P			(EA-3) McKinney
1	EA	Controller	781N-120			(EC-5) Corbin Russwin

NHP EHI VPC

SR2 PER JEFF

Heading #: 03.1

PR7470 WD

	1	PR	Door: T-1001	CORR T-1001 FROM CORR	RHR/LHR	20
	1	PR	Door: T-1003	CORR T-1003 FROM VESTIBULE 1E101	RHR/LHR	20
			2-3' 8" x 7' 0" x 1 3/4" WDD/HMF			
4	EA	Continuous Hinge	MCK-25HD SER-12 83"		CL	(HC-4) McKinney
4	EA	Fire Rated Conc Vert Rod	ED5860B L955 W048 M92 M94 M55 7P		630	(ED-12) Corbin Russwin
4	EA	Kickplate	K1050 8" x 42" 4BE CSK		US32D	(KP-4) Rockwood
			VERIFY KP REQUIRED IN LIEU OF MOP PLATE			
4	EA	Kickplate	K1050 36" x 42" 4BE CSK		US32D	(KP-5) Rockwood
4	EA	Wall Stop	409		US26D	(ST-2) Rockwood
2	EA	Gasketing	S88BL 25"			(GA-6) Pemko
2	EA	Edge Guard	306B -UL 84" CUTOUT-1		US32D	(AS-1) Rockwood
2	EA	Astragal	18041CNB 84"			(AS-2) Pemko
4	EA	ElectroLynx Harness	QC-C006P			(EA-1) McKinney
4	EA	ElectroLynx Harness	QC-C1500P			(EA-3) McKinney
2	EA	Controller	781N-120			(EC-5) Corbin Russwin

NHP EHI VPC

SR2 PER JEFF

Hardware Schedule

Project ID: SG0034

North Oaks Cafeteria Renovation & Emergency

Heading #: 04

PR 6070 AL

	1 PR	Door: 1X100A	CORR FROM DINNING 1X100	RHR/LHR	
		2-3' 0" x 7' 0" x 1 3/4" Other/			
2 EA	Continuous Hinge	MCK-12HD 83"		CL	(HC-1) McKinney
2 EA	Concealed Vert Rod Exit	ED4800 O859 7P		630	(ED-3) Corbin Russwin
2 EA	Door Pull	BF159 C		US32D	(PP-5) Rockwood
2 EA	Surface Closer	DC6210 A11		689	(CL-1) Corbin Russwin
2 EA	Drop Plate	597F58		689	(CL-6) Corbin Russwin
2 EA	Wall Stop	409		US26D	(ST-2) Rockwood
2 EA	Electromagnetic Holder	998		689	(ST-3) Rixson

Heading #: 05

PR6070 WD RTD

	1 PR	Door: 1X121A	CORR 1X121 FROM COR 1X125	RHR/LHR	60
		2-3' 0" x 7' 0" x 1 3/4" WDD/HMF			
2 EA	Continuous Hinge	MCK-25HD Fire Pin Kit 83"		CL	(HC-6) McKinney
2 EA	Fire Rated Conc Vert Rod	ED5860B L955 M55 7P		630	(ED-5) Corbin Russwin
2 EA	Surface Closer	DC6210 A3		689	(CL-2) Corbin Russwin
2 EA	Kickplate	K1050 36" x 34" 4BE CSK		US32D	(KP-2) Rockwood
2 EA	Wall Stop	409		US26D	(ST-2) Rockwood
2 EA	Electromagnetic Holder	998		689	(ST-3) Rixson
1 EA	Gasketing	S88BL 20'			(GA-4) Pemko
2 EA	Astragal	18041CNB 84"			(AS-2) Pemko

Heading #: 05.1

PR6070 WD RTD

	1 PR	Door: 1X121B	COR 1X121 FROM CORR 1X124	RHR/LHR	90
		2-2' 10" x 7' 0" x 1 3/4" WDD/HMF			
2 EA	Continuous Hinge	MCK-25HD Fire Pin Kit 83"		CL	(HC-6) McKinney
2 EA	Fire Rated Conc Vert Rod	ED5860B L955 M55 7P		630	(ED-5) Corbin Russwin
2 EA	Surface Closer	DC6210 A3		689	(CL-2) Corbin Russwin
2 EA	Kickplate	K1050 36" x 32" 4BE CSK		US32D	(KP-6) Rockwood
2 EA	Wall Stop	409		US26D	(ST-2) Rockwood
2 EA	Electromagnetic Holder	998		689	(ST-3) Rixson
1 EA	Gasketing	S88BL 20'			(GA-4) Pemko
2 EA	Astragal	18041CNB 84"			(AS-2) Pemko

Heading #: 06

PR74710 WD RTD

	1 PRA/PRI	Door: T-1002A	CORR T-1001 TO SHELL T-1002	RHA/LH	45
	1 PRA/PRI	Door: T-1002B	CORR T-1003 TO SHELL T-1002	RHA/LH	45
	1 PRA/PRI	Door: T-1004A	CORR T-1003 TO SHELL T-1004	RHA/LH	45
	1 PRA/PRI	Door: T-1004C	EXISTING FROM SHELL T-1004	RHRA/LHR	45
		2-3' 8" x 7' 10" x 1 3/4" WDD/HMF			
8 EA	Continuous Hinge	MCK-25HD Fire Pin Kit 93"		CL	(HC-5) McKinney
4 EA	Dust Proof Strike	570		US26D	(BO-1) Rockwood
4 Set	Flush Bolt	1942		US26D	(BO-2) Rockwood
4 EA	Classroom Lock	ML2055 LSA 7P		626	(LO-2) Corbin Russwin
4 EA	Coordinator	1688		US28	(CO-3) Rockwood
8 EA	Surface Closer	DC6200		689	(CL-4) Corbin Russwin
8 EA	Kickplate	K1050 36" x 42" 4BE CSK		US32D	(KP-5) Rockwood
8 EA	Door Stop	442		US26D	(ST-1) Rockwood
4 EA	Gasketing	S88BL 25'			(GA-6) Pemko
4 EA	Astragal	18041CNB 94"			(AS-3) Pemko

Hardware Schedule

Project ID: SG0034

North Oaks Cafeteria Renovation & Emergency

Heading #: 07.2

PR7470 NR

	1	PRA/PRI Door: 1M104	CORR 1E160 FROM CLN SUP 1M104	RHRA/LHR	
		2-3' 8" x 7' 0" x 1 3/4" WDD/HMF			
6 EA	Hinge	T4A3786 5" x 4-1/2"	<i>50H</i>	US26D	(HI-3) McKinney
1 EA	Dust Proof Strike	570		US26D	(BO-1) Rockwood
2 EA	Flush Bolt	555	<i>MFB</i>	US26D	(BO-3) Rockwood
1 EA	Storeroom Lock	ML2057 LSA 7P		626	(LO-3) Corbin Russwin
2 EA	Surface Overhead Stop	9-536	<i>SR2</i>	630	(OH-4) Rixson
2 EA	Kickplate	K1050 8" x 46" 4BE CSK		US32D	(KP-10) Rockwood
2 EA	Kickplate	K1050 4" x 47" 4BE CSK		US32D	(KP-12) Rockwood
1 EA	Gasketing	S88BL 25'			(GA-6) Pemko
2 EA	Astragal	18041CNB 84"			(AS-2) Pemko

Heading #: 7.1

PR6070 EXISTING

	1	SGL Door: 1X115	CORR 1C117 TO STAFF TRAIN 1X115	LH	
		3' 0" x 7' 0" x 1 3/4" Existing/			
3 EA	Hinge	TA2714 4-1/2" x 4-1/2"	<i>EXIS</i>	US26D	(HI-1) McKinney
1 EA	Storeroom Lock	ML2057 LSA 7P		626	(LO-3) Corbin Russwin
1 EA	Surface Closer	DC6200		689	(CL-4) Corbin Russwin
2 EA	Kickplate	K1050 8" x 34" 4BE CSK		US32D	(KP-1) Rockwood
2 EA	Kickplate	K1050 4" x 35" 4BE CSK		US32D	(KP-3) Rockwood
1 EA	Door Stop	442		US26D	(ST-1) Rockwood
1 EA	Gasketing	S88BL 17'			(GA-3) Pemko
		VERIFY OPENING SIZE			

Heading #: 08

3070 WD RTD

	1	SGL Door: EST-9-1	PASSAGE 1X120 FROM STAIR EST-9-1	LHR	60
		3' 0" x 7' 0" x 1 3/4" WDD/HMF			
1 EA	Continuous Hinge	MCK-25HD SER-12 Fire Pin Kit 83"	<i>NHP EH2</i>	CL	(HC-7) McKinney
1 EA	Electrified Rim Exit	ED5200SA L9903 M92 7P	<i>SR8</i>	630	(ED-6) Corbin Russwin
1 EA	Surface Closer	DC6210 A11	<i>SR2</i>	689	(CL-1) Corbin Russwin
1 EA	Kickplate	K1050 36" x 34" 4BE CSK		US32D	(KP-2) Rockwood
1 EA	Kickplate	K1050 4" x 35" 4BE CSK		US32D	(KP-3) Rockwood
1 EA	Wall Stop	409		US26D	(ST-2) Rockwood
1 EA	Gasketing	S88BL 17'			(GA-3) Pemko
1 EA	ElectroLynx Harness	QC-C006P	<i>MSI-4 1/2" FROM LOCK SIDE</i>		(EA-1) McKinney
1 EA	ElectroLynx Harness	QC-C1500P			(EA-3) McKinney
1	Security Contact	2757D		32D	(EC-1) GE
1 EA	Power Supply	BPS-24-1			(PS-1) Securitron

Heading #: 09

3070 RTD

	1	SGL Door: 1X120A	PASSAGE 1X120 FROM DINNING 1X100	RHR	60
		3' 0" x 7' 0" x 1 3/4" WDD/HMF			
1 EA	Continuous Hinge	MCK-25HD SER-12 Fire Pin Kit 83"	<i>NHP EH2</i>	CL	(HC-7) McKinney
1 EA	Fire Rated Rim Exit	ED5200SA L957 M92 M94 7P	<i>SR2</i>	630	(ED-7) Corbin Russwin
1 EA	Surface Closer	DC6210 A11		689	(CL-1) Corbin Russwin
1 EA	Kickplate	K1050 8" x 34" 4BE CSK		US32D	(KP-1) Rockwood
		VERIFY KP REQUIRED IN LIEU OF MOP PLATE			
1 EA	Kickplate	K1050 36" x 34" 4BE CSK		US32D	(KP-2) Rockwood
1 EA	Wall Stop	409		US26D	(ST-2) Rockwood
1 EA	Gasketing	S88BL 17'			(GA-3) Pemko
1 EA	ElectroLynx Harness	QC-C006P	<i>MSI-4 1/2" FROM LOCK SIDE</i>		(EA-1) McKinney
1 EA	ElectroLynx Harness	QC-C1500P			(EA-3) McKinney
1	Security Contact	2757D		32D	(EC-1) GE
1 EA	Controller	781N-120			(EC-5) Corbin Russwin

Hardware Schedule

Project ID: SG0034

North Oaks Cafeteria Renovation & Emergency

Heading #: 10

3670 WD RTD

	1	SGL	Door: 1X117	CORR 1C114 FROM CLOSET 1X117	LHR	45
	1	SGL	Door: 1X118	CORR 1C114 FROM SOILED LINEN 1X118	LHR	45
	1	SGL	Door: 1X119	CORR 1C114 FROM CLEAN LINEN 1X119	LHR	45
3' 6" x 7' 0" x 1 3/4" WDD/HMF						
6	EA	Hinge	T4A3786 5" x 4-1/2"	<i>-50H</i>	US26D	(HI-3) McKinney
3	EA	Hinge	T4A3786 QC8 5" x 4-1/2"	<i>EM2</i>	US26D	(HI-4) McKinney
3	EA	Fail Secure Lock	ML20905 LSA M92 7P	<i>ASA</i>	626	(LO-5) Corbin Russwin
3	EA	Surface Closer	DC6210 A4	<i>-SR2</i>	689	(CL-3) Corbin Russwin
3	EA	Kickplate	K1050 8" x 40" 4BE CSK		US32D	(KP-7) Rockwood
3	EA	Kickplate	K1050 36" x 40" 4BE CSK		US32D	(KP-8) Rockwood
3	EA	Gasketing	S88BL 18'			(GA-7) Pemko
3	EA	ElectroLynx Harness	QC-C306P			(EA-2) McKinney
3	EA	ElectroLynx Harness	QC-C1500P			(EA-3) McKinney
3		Security Contact	2757D	<i>MSI-4110/2</i>	32D	(EC-1) GE
3	EA	Power Supply	BPS-24-1			(PS-1) Securitron

Heading #: 11

3070 WD

	1	SGL	Door: 1X107	KITCHEN 1X109 FROM CLOSET 1X107	LHR	
3' 0" x 7' 0" x 1 3/4" WDD/HMF						
3	EA	Hinge	TA2714 4-1/2" x 4-1/2"		US26D	(HI-1) McKinney
1	EA	Storeroom Lock	ML2057 LSA 7P	<i>-ASA</i>	626	(LO-3) Corbin Russwin
1	EA	Surface Overhead Stop	9-336	<i>-SR2</i>	630	(OH-1) Rixson
1	EA	Kickplate	K1050 8" x 34" 4BE CSK		US32D	(KP-1) Rockwood
VERIFY KP REQUIRED IN LIEU OF MOP PLATE						
1	EA	Kickplate	K1050 36" x 34" 4BE CSK		US32D	(KP-2) Rockwood
3	EA	Silencer	608			(SI-1) Rockwood

Heading #: 11.1

3070 WD

	1	SGL	Door: 1X106A	SERVING 1X103 TO BEVERAGE 1X106A	RH	
3' 0" x 7' 0" x 1 3/4" WDD/HMF						
3	EA	Hinge	TA2714 4-1/2" x 4-1/2"		US26D	(HI-1) McKinney
1	EA	Storeroom Lock	ML2057 LSA 7P	<i>-ASA</i>	626	(LO-3) Corbin Russwin
1	EA	Kickplate	K1050 8" x 34" 4BE CSK		US32D	(KP-1) Rockwood
VERIFY KP REQUIRED IN LIEU OF MOP PLATE						
1	EA	Kickplate	K1050 36" x 34" 4BE CSK		US32D	(KP-2) Rockwood
1	EA	Wall Stop	409		US26D	(ST-2) Rockwood
3	EA	Silencer	608			(SI-1) Rockwood

Heading #: 12

3070 AL

	1	SGL	Door: 1X116	TRAY 1X111 TO SUPER OFFICE 1X116	LH	
3' 0" x 7' 0" x 1 3/4" Other/						
3	EA	Hinge	TA2714 4-1/2" x 4-1/2"		US26D	(HI-1) McKinney
1	EA	Office Lock	ML2051 LSA 7P	<i>AL</i>	626	(LO-4) Corbin Russwin
1	EA	Conc Overhead Stop	1-336		630	(OH-2) Rixson
1	EA	Kickplate	K1050 8" x 34" 4BE CSK		US32D	(KP-1) Rockwood
1	EA	Kickplate	K1050 4" x 35" 4BE CSK		US32D	(KP-3) Rockwood
3	EA	Silencer	608			(SI-1) Rockwood
1	EA	Coat Hook	806		US26D	(OT-1) Rockwood

Hardware Schedule

Project ID: SG0034

North Oaks Cafeteria Renovation & Emergency

Heading #: 19

PR7470 EXISTING

	1 SGL	Door: 1E126		
	7' 4" x 7' 0" x 1 3/4" Existing/			
2 EA	Continuous Hinge	MCK-25HD SER-12 83"	CL	(HC-4) McKinney
2 EA	Fire Rated Conc Vert Rod	ED5860B L955 W048 M92 M94 M55 7P	630	(ED-12) Corbin Russwin
2 EA	ElectroLynx Harness	QC-C006P		(EA-1) McKinney
2 EA	ElectroLynx Harness	QC-C1500P		(EA-3) McKinney
2	Security Contact	2757D	32D	(EC-1) GE
1 EA	Controller	781N-120		(EC-5) Corbin Russwin

FIELD VERIFICATION REQUIRED BEFORE HARDWARE CAN BE ORDERED

Heading #: 20

EXISTING

	1 SGL	Door: 1X101A	EXTERIOR FROM DINNING 1X101	RHR
	1 SGL	Door: 1X106	SERVING 1X103 FROM KITCHEN 1X109	LHR
	1 SGL	Door: 1X111A	EXISTING	NH

0" x 0" x 1 3/4" Existing/

EXISTING OPENING - NO HARDWARE REQUIRED

Heading #: 21

ACCORDIAN DOOR

	1 SGL	Door: 1X101B		NH
	21' 0" x 9' 0" x 1 3/4" Other/			
1 EA	Cylinder	1000-114-	626	(CY-2) Corbin Russwin

VERIFY CYLINDER WITH DOOR SUPPLIER - ALL OTHER HARDWARE IS BY OTHERS

Heading #: 22

ALUM

	1 SGL	Door: 1E103	CORR 1E270 FROM WAIT 1E103	NH
	1 SGL	Door: 1E200	VESTIBULE 1E200 FROM CORR 1E201	NH
	1 SGL	Door: 1E257	VESTIBULE 1E257 FROM LOBBY 1E259	NH

10' 0" x 7' 8" x 1 3/4" Other/

6 EA	Cylinder	1000-114-	626	(CY-2) Corbin Russwin
------	----------	-----------	-----	-----------------------

VERIFY CYLINDER WITH DOOR SUPPLIER - ALL OTHER HARDWARE IS BY OTHERS

Heading #: 23

PR7470 WD RTD

	1 PR	Door: 1E171	CORR 1E133 FROM CORR 1E171	RHR/LHR	20
	2-3' 8" x 7' 0" x 1 3/4" WDD/HMF				
2 EA	Continuous Hinge	MCK-25HD Fire Pin Kit 83"	CL	(HC-6) McKinney	
2 EA	Fire Rated Conc Vert Rod	ED5860B L957 W048 M92 M94 M55 7P	630	(ED-13) Corbin Russwin	
2 EA	Surface Closer	DC6210 A11	689	(CL-1) Corbin Russwin	
2 EA	Kickplate	K1050 8" x 42" 4BE CSK	US32D	(KP-4) Rockwood	
2 EA	Kickplate	K1050 4" x 43" 4BE CSK	US32D	(KP-11) Rockwood	
2 EA	Wall Stop	409	US26D	(ST-2) Rockwood	
1 EA	Gasketing	S88BL 25'		(GA-6) Pemko	
2 EA	Astragal	18041CNB 84"		(AS-2) Pemko	
2 EA	ElectroLynx Harness	QC-C006P		(EA-1) McKinney	
2 EA	ElectroLynx Harness	QC-C1500P		(EA-3) McKinney	
2	Security Contact	2757D	32D	(EC-1) GE	
1 EA	Controller	781N-120		(EC-5) Corbin Russwin	

-NHPELEC?
-SR2
-MSI - 9" LEADWAY OFF CTR OF HEAD

Hardware Schedule

Project ID: SG0034

North Oaks Cafeteria Renovation & Emergency

Heading #: 13

3070 WD RTD

1 SGL Door: 1X120C CORR 1X121 TO OFFICE 1X122 RH 60
3' 0" x 7' 0" x 1 3/4" WDD/HMF

1 EA	Continuous Hinge	MCK-25HD Fire Pin Kit 83" <i>NHP</i>	CL	(HC-6) McKinney
1 EA	Office Lock	ML2051 LSA 7P <i>ASA</i>	626	(LO-4) Corbin Russwin
1 EA	Surface Closer	DC6200 <i>SAI</i>	689	(CL-4) Corbin Russwin
1 EA	Kickplate	K1050 4" x 35" 4BE CSK	US32D	(KP-3) Rockwood
1 EA	Wall Stop	409	US26D	(ST-2) Rockwood
1 EA	Gasketing	S88BL 17'		(GA-3) Pemko

Heading #: 14

3070 WD

1 SGL Door: 1X105 SERVING 1X103 TO GRILL 1X105 LH
3' 0" x 7' 0" x 1 3/4" WDD/HMF

3 EA	Hinge	TA2714 4-1/2" x 4-1/2"	US26D	(HI-1) McKinney
1 EA	Classroom Lock	ML2055 LSA 7P <i>ASA</i>	626	(LO-2) Corbin Russwin
1 EA	Surface Closer	DC6200 A1 <i>SAI</i>	689	(CL-5) Corbin Russwin
1 EA	Kickplate	K1050 8" x 34" 4BE CSK	US32D	(KP-1) Rockwood
VERIFY KP REQUIRED IN LIEU OF MOP PLATE				
1 EA	Kickplate	K1050 36" x 34" 4BE CSK	US32D	(KP-2) Rockwood
1 EA	Wall Stop	409	US26D	(ST-2) Rockwood
1 EA	Edge Guard	306B -UL 84" CUTOUT-1	US32D	(AS-1) Rockwood
3 EA	Silencer	608		(SI-1) Rockwood

Heading #: 15

3070 WD RTD

1 SGL Door: 1X120B CORR 1X121 TO TRANSC 1X120 RH 90
3' 0" x 7' 0" x 1 3/4" WDD/HMF

3 EA	Hinge	TA2714 4-1/2" x 4-1/2"	US26D	(HI-1) McKinney
1 EA	Classroom Lock	ML2055 LSA 7P <i>ASA</i>	626	(LO-2) Corbin Russwin
1 EA	Surface Closer	DC6210 A11 <i>HI</i>	689	(CL-1) Corbin Russwin
1 EA	Kickplate	K1050 4" x 35" 4BE CSK	US32D	(KP-3) Rockwood
1 EA	Gasketing	S88BL 17'		(GA-3) Pemko

Heading #: 16

40710 WD RTD

1 SGL Door: T-1000 CORR T-1001 TO SHELL T-1000 LH 45
4' 0" x 7' 10" x 1 3/4" WDD/HMF

1 EA	Continuous Hinge	MCK-25HD Fire Pin Kit 93" <i>NHP</i>	CL	(HC-5) McKinney
1 EA	Classroom Lock	ML2055 LSA 7P <i>ASA</i>	626	(LO-2) Corbin Russwin
1 EA	Surface Closer	DC6200 <i>SAI</i>	689	(CL-4) Corbin Russwin
1 EA	Kickplate	K1050 36" x 46" 4BE CSK	US32D	(KP-9) Rockwood
1 EA	Door Stop	442	US26D	(ST-1) Rockwood
1 EA	Gasketing	S88BL 20'		(GA-4) Pemko

Heading #: 18

3070 EXISTING

1 SGL Door: 1X109 KITCHEN 1X109 FROM EXISTING RHR
3' 0" x 7' 0" x 1 3/4" Existing/

1 EA	Hinge	TA2714 QC8 4-1/2" x 4-1/2"	US26D	(HI-2) McKinney
1 EA	Fail Secure Lock	ML20905 LSA M92 7P <i>EXIST</i>	626	(LO-5) Corbin Russwin
1 EA	ElectroLynx Harness	QC-C306P		(EA-2) McKinney
1 EA	ElectroLynx Harness	QC-C1500P		(EA-3) McKinney
1	Security Contact	2757D	32D	(EC-1) GE
1 EA	Power Supply	BPS-24-1		(PS-1) Securitron

FIELD VERIFICATION REQUIRED BEFORE HARDWARE CAN BE ORDERED

Hardware Schedule

Project ID: SG0034

North Oaks Cafeteria Renovation & Emergency

Heading #: 24

PR6070 WD

1 PR Door: 1E103A WAIT 1E103 FROM CORR RHR/LHR
2-3' 0" x 7' 0" x 1 3/4" WDD/HMF

2 EA	Continuous Hinge	MCK-25HD SER-12 83"	CL	(HC-4) McKinney
2 EA	Concealed Vert Rod Exit	ED5860 L957 M92 M94 M55 7P	630	(ED-9) Corbin Russwin
2 EA	Kickplate	K1050 36" x 34" 4BE CSK	US32D	(KP-2) Rockwood
2 EA	Kickplate	K1050 4" x 35" 4BE CSK	US32D	(KP-3) Rockwood
2 EA	Wall Stop	409	US26D	(ST-2) Rockwood
2 EA	Silencer	608		(SI-1) Rockwood
2 EA	ElectroLynx Harness	QC-C006P		(EA-1) McKinney
2 EA	ElectroLynx Harness	QC-C1500P		(EA-3) McKinney
2	Security Contact	2757D	32D	(EC-1) GE
1 EA	Controller	781N-120		(EC-5) Corbin Russwin

Heading #: 24.1

PR7470 WD

1 PR Door: 1E179 CORR 1E133 FROM CORR 1E179 RHR/LHR
2-3' 8" x 7' 0" x 1 3/4" WDD/HMF

2 EA	Continuous Hinge	MCK-25HD SER-12 83"	CL	(HC-4) McKinney
2 EA	Concealed Vert Rod Exit	ED5860 L957 W048 M92 M94 M55 7P	630	(ED-14) Corbin Russwin
2 EA	Kickplate	K1050 36" x 42" 4BE CSK	US32D	(KP-5) Rockwood
2 EA	Kickplate	K1050 4" x 43" 4BE CSK	US32D	(KP-11) Rockwood
2 EA	Wall Stop	409	US26D	(ST-2) Rockwood
2 EA	Silencer	608		(SI-1) Rockwood
2 EA	ElectroLynx Harness	QC-C006P		(EA-1) McKinney
2 EA	ElectroLynx Harness	QC-C1500P		(EA-3) McKinney
2	Security Contact	2757D	32D	(EC-1) GE
1 EA	Controller	781N-120		(EC-5) Corbin Russwin

Heading #: 25

PR7470 WD

1 PR Door: 1E259 LOBBY 1E259 FROM CORR 1E259 RHR/LHR
2-3' 8" x 7' 0" x 1 3/4" WDD/HMF

2 EA	Continuous Hinge	MCK-25HD SER-12 83"	CL	(HC-4) McKinney
2 EA	Concealed Vert Rod Exit	ED5860 L957 W048 M92 M94 M55 7P	630	(ED-14) Corbin Russwin
2 EA	Kickplate	K1050 36" x 42" 4BE CSK	US32D	(KP-5) Rockwood
2 EA	Kickplate	K1050 4" x 43" 4BE CSK	US32D	(KP-11) Rockwood
2 EA	Wall Stop	409	US26D	(ST-2) Rockwood
2 EA	Silencer	608		(SI-1) Rockwood
2 EA	ElectroLynx Harness	QC-C006P		(EA-1) McKinney
2 EA	ElectroLynx Harness	QC-C1500P		(EA-3) McKinney
2	Security Contact	2757D	32D	(EC-1) GE
1 EA	Controller	781N-120		(EC-5) Corbin Russwin

Hardware Schedule

Project ID: SG0034

North Oaks Cafeteria Renovation & Emergency

Heading #: 26

PR7470 WD NR

	1	PR	Door: 1E126.1	CORR 1E133 TO/FROM CORR 1E126	LHR/LHR	
	1	PR	Door: 1E133	CORR T-X104 TO/FROM CORR 1E133	LHR/LHR	
	2-3' 8" x 7' 0" x 1 3/4" WDD/HMF					
4	EA	Continuous Hinge	MCK-25HD SER-12 83"		CL	(HC-4) McKinney
4	EA	Concealed Vert Rod Exit	ED5860 L910 W048 M92 M94 M55		630	(ED-15) Corbin Russwin
2	EA	Cylinder	1000-114-		626	(CY-2) Corbin Russwin
4	EA	Kickplate	K1050 8" x 42" 4BE CSK		US32D	(KP-4) Rockwood
			VERIFY KP REQUIRED IN LIEU OF MOP PLATE			
4	EA	Kickplate	K1050 36" x 42" 4BE CSK		US32D	(KP-5) Rockwood
2	EA	Gasketing	S88BL 25'			(GA-6) Pemko
4	EA	Astragal	18041CNB 84"			(AS-2) Pemko
4		Security Contact	2757D		32D	(EC-1) GE
2	EA	Keyswitch	MKN			(EC-2) Securitron
2	EA	Push Button	EEB2			(EC-3) Securitron
4	EA	Electronic Exit Delay	IMXDA			(EC-4) Securitron
2	EA	Controller	781N-120			(EC-5) Corbin Russwin
2	EA	Power Supply	BPS-24-1			(PS-1) Securitron

Heading #: 26.1

PR7470 WD NR

	1	PR	Door: 1E167	CORR 1E133 TO/FROM CORR 1E167	LHR/LHR	20
	1	PR	Door: 1E170	CORR X107 TO/FROM CORR 1E170	LHR/LHR	20
	1	PR	Door: 1E175	CORR X105 TO/FROM CORR 1E175	LHR/LHR	20
	1	PR	Door: 1E221A	CORR 1E221 TO/FROM TRIAGE 1E239	LHR/LHR	20
	2-3' 8" x 7' 0" x 1 3/4" WDD/HMF					
8	EA	Continuous Hinge	MCK-25HD Fire Pin Kit 83"		CL	(HC-6) McKinney
8	EA	Fire Rated Conc Vert Rod	ED5860B L910 W048 M92 M94 M55		630	(ED-10) Corbin Russwin
4	EA	Cylinder	1000-114-		626	(CY-2) Corbin Russwin
8	EA	Kickplate	K1050 8" x 42" 4BE CSK		US32D	(KP-4) Rockwood
8	EA	Kickplate	K1050 36" x 42" 4BE CSK		US32D	(KP-5) Rockwood
			VERIFY KP REQUIRED IN LIEU OF MOP PLATE			
4	EA	Gasketing	S88BL 25'			(GA-6) Pemko
8	EA	Astragal	18041CNB 84"			(AS-2) Pemko
8		Security Contact	2757D		32D	(EC-1) GE
4	EA	Keyswitch	MKN			(EC-2) Securitron
4	EA	Push Button	EEB2			(EC-3) Securitron
8	EA	Electronic Exit Delay	IMXDA			(EC-4) Securitron
4	EA	Controller	781N-120			(EC-5) Corbin Russwin
4	EA	Power Supply	BPS-24-1			(PS-1) Securitron

Heading #: 27

PR7470 WD NR

	1	PR	Door: 1E270	CORR 1E270 TO/FROM CORR 1E271	LHR/LHR	
	1	PR	Door: 1E270A	CORR 1E270 TO/FROM CORR 1E271	LHR/LHR	
	2-3' 8" x 7' 0" x 1 3/4" WDD/HMF					
4	EA	Continuous Hinge	MCK-25HD SER-12 83"		CL	(HC-4) McKinney
4	EA	Concealed Vert Rod Exit	ED5860 L910 W048 M92 M94 M55		630	(ED-15) Corbin Russwin
2	EA	Cylinder	1000-114-		626	(CY-2) Corbin Russwin
4	EA	Surface Closer	DC6210 A3		689	(CL-2) Corbin Russwin
4	EA	Kickplate	K1050 8" x 42" 4BE CSK		US32D	(KP-4) Rockwood
4	EA	Kickplate	K1050 4" x 43" 4BE CSK		US32D	(KP-11) Rockwood
4	EA	Wall Stop	409		US26D	(ST-2) Rockwood
4	EA	Electromagnetic Holder	998		689	(ST-3) Rixson
4	EA	Silencer	608			(SI-1) Rockwood
4		Security Contact	2757D		32D	(EC-1) GE
2	EA	Keyswitch	MKN			(EC-2) Securitron
2	EA	Push Button	EEB2			(EC-3) Securitron
4	EA	Electronic Exit Delay	IMXDA			(EC-4) Securitron
2	EA	Controller	781N-120			(EC-5) Corbin Russwin
2	EA	Power Supply	BPS-24-1			(PS-1) Securitron

Hardware Schedule

Project ID: SG0034

North Oaks Cafeteria Renovation & Emergency

Heading #: 28.1

3070 WD RTD

	1	SGL	Door: 1E120	CORR 1E125 TO SOILED 1E120	LH	45
	1	SGL	Door: 1E132	CORR 1E133 TO ENV SERV 1E132	RH	45
3' 0" x 7' 0" x 1 3/4" WDD/HMF						
2	EA	Continuous Hinge	MCK-25HD Fire Pin Kit 83"		CL	(HC-6) McKinney
2	EA	Fail Secure Lock	ML20905 LSA M92 7P		626	(LO-5) Corbin Russwin
2	EA	Surface Closer	DC6200		689	(CL-4) Corbin Russwin
2	EA	Kickplate	K1050 36" x 34" 4BE CSK		US32D	(KP-2) Rockwood
2	EA	Kickplate	K1050 4" x 35" 4BE CSK		US32D	(KP-3) Rockwood
2	EA	Wall Stop	409		US26D	(ST-2) Rockwood
2	EA	Gasketing	S88BL 17'			(GA-3) Pemko
2	EA	ElectroLynx Harness	QC-C306P			(EA-2) McKinney
2	EA	ElectroLynx Harness	QC-C1500P			(EA-3) McKinney
2		Security Contact	2757D		32D	(EC-1) GE
2	EA	Power Supply	BPS-24-1			(PS-1) Securitron

Heading #: 28.2

4070 WD RTD

	1	SGL	Door: 1E163	CORR 1E167 TO CLEAN SUP 1E163	RH	45
	1	SGL	Door: 1E164	CORR 1E167 TO EQUIP 1E164	LH	45
	1	SGL	Door: 1E165	CORR 1E167 TO SOILED WRKRM 1E165	LH	45
	1	SGL	Door: 1E172	CORR 1E170 TO CLEAN SUP 1E172	RH	45
	1	SGL	Door: 1E204A	CORR 1E145 TO CLEAN UTILITY 1E204	LH	45
	1	SGL	Door: 1E204B	NOURSMNT 1E128A TO CLEAN UTILITY 1E204	RH	45
	1	SGL	Door: 1E205A	CORR 1E145 TO SOILED 1E205	LH	45
	1	SGL	Door: 1E205B	CORR 1E218 TO SOILED 1E205	RH	45
4' 0" x 7' 0" x 1 3/4" WDD/HMF						
8	EA	Continuous Hinge	MCK-25HD Fire Pin Kit 83"		CL	(HC-6) McKinney
8	EA	Fail Secure Lock	ML20905 LSA M92 7P		626	(LO-5) Corbin Russwin
8	EA	Surface Closer	DC6200		689	(CL-4) Corbin Russwin
8	EA	Kickplate	K1050 36" x 46" 4BE CSK		US32D	(KP-9) Rockwood
8	EA	Kickplate	K1050 4" x 47" 4BE CSK		US32D	(KP-12) Rockwood
8	EA	Wall Stop	409		US26D	(ST-2) Rockwood
8	EA	Gasketing	S88BL 18'			(GA-7) Pemko
8	EA	ElectroLynx Harness	QC-C306P			(EA-2) McKinney
8	EA	ElectroLynx Harness	QC-C1500P			(EA-3) McKinney
8		Security Contact	2757D		32D	(EC-1) GE
8	EA	Power Supply	BPS-24-1			(PS-1) Securitron

Heading #: 28.3

3670 WD RTD

	1	SGL	Door: 1E128	CORR 1E125 TO SUPPLIES 1E128	RH	45
3' 6" x 7' 0" x 1 3/4" WDD/HMF						
1	EA	Continuous Hinge	MCK-25HD Fire Pin Kit 83"		CL	(HC-6) McKinney
1	EA	Fail Secure Lock	ML20905 LSA M92 7P		626	(LO-5) Corbin Russwin
1	EA	Surface Closer	DC6200		689	(CL-4) Corbin Russwin
1	EA	Kickplate	K1050 36" x 42" 4BE CSK		US32D	(KP-5) Rockwood
1	EA	Kickplate	K1050 4" x 41" 4BE CSK		US32D	(KP-13) Rockwood
1	EA	Wall Stop	409		US26D	(ST-2) Rockwood
1	EA	Gasketing	S88BL 18'			(GA-7) Pemko
1	EA	ElectroLynx Harness	QC-C306P			(EA-2) McKinney
1	EA	ElectroLynx Harness	QC-C1500P			(EA-3) McKinney
1		Security Contact	2757D		32D	(EC-1) GE
1	EA	Power Supply	BPS-24-1			(PS-1) Securitron

Hardware Schedule

Project ID: SG0034

North Oaks Cafeteria Renovation & Emergency

*NO need for electrical
just a simple privacy
set is required.
use # 45.1*

*provide
a credit
for this*

Heading #: 28.4

3070 WD NR

1	SGL	Door: 1E121	CORR 1E125 FROM PAT TLT 1E121	RHR	
1	SGL	Door: 1E159	STAFF LOUNGE 1E157 FROM TLT 1E159	RHR	
1	SGL	Door: 1E162	CORR 1E160 FROM PAT TLT 1E162	LHR	
1	SGL	Door: 1E173	CORR 1E175 FROM PAT TLT 1E173	LHR	

3' 0" x 7' 0" x 1 3/4" WDD/HMF

4	EA	Continuous Hinge	MCK-25HD SER-12 83"	CL	(HC-4) McKinney
4	EA	Fail Secure Lock	ML20905 LSA M92 7P	626	(LO-5) Corbin Russwin
4	EA	Surface Closer	DC6210 A11	689	(CL-1) Corbin Russwin
4	EA	Kickplate	K1050 36" x 34" 4BE CSK	US32D	(KP-2) Rockwood
4	EA	Kickplate	K1050 4" x 35" 4BE CSK	US32D	(KP-3) Rockwood
4	EA	Gasketing	S88BL 17'		(GA-3) Pemko
4	EA	ElectroLynx Harness	QC-C306P		(EA-2) McKinney
4	EA	ElectroLynx Harness	QC-C1500P		(EA-3) McKinney
4		Security Contact	2757D	32D	(EC-1) GE
4	EA	Power Supply	BPS-24-1		(PS-1) Securitron

Heading #: 28.5

3070 WD NR

1	SGL	Door: 1E131A	ON CALL 1E131 FROM TLT 1E131A	RHR	
---	-----	--------------	-------------------------------	-----	--

3' 0" x 7' 0" x 1 3/4" WDD/HMF

1	EA	Continuous Hinge	MCK-25HD SER-12 83"	CL	(HC-4) McKinney
1	EA	Fail Secure Lock	ML20905 LSA M92 7P	626	(LO-5) Corbin Russwin
1	EA	Surface Closer	DC6210 A3	689	(CL-2) Corbin Russwin
1	EA	Kickplate	K1050 36" x 34" 4BE CSK	US32D	(KP-2) Rockwood
1	EA	Kickplate	K1050 4" x 35" 4BE CSK	US32D	(KP-3) Rockwood
1	EA	Wall Stop	409	US26D	(ST-2) Rockwood
1	EA	Gasketing	S88BL 17'		(GA-3) Pemko
1	EA	ElectroLynx Harness	QC-C306P		(EA-2) McKinney
1	EA	ElectroLynx Harness	QC-C1500P		(EA-3) McKinney
1		Security Contact	2757D	32D	(EC-1) GE
1	EA	Power Supply	BPS-24-1		(PS-1) Securitron

*same as
above as
use 45.1*

Heading #: 29

4070 WD RTD

1	SGL	Door: 1E146	CORR 1E170 TO ENVIRO SER 1E146	LH	45
1	SGL	Door: 1E202A	CORR 1E201 TO EQUIP 1E202	RH	45
1	SGL	Door: 1E202B	CORR 1E145 TO EQUIP 1E202	LH	45

4' 0" x 7' 0" x 1 3/4" WDD/HMF

6	EA	Hinge	T4A3786 5" x 4-1/2"	US26D	(HI-3) McKinney
3	EA	Hinge	T4A3786 QC8 5" x 4-1/2"	US26D	(HI-4) McKinney
3	EA	Fail Secure Lock	ML20905 LSA M92 7P	626	(LO-5) Corbin Russwin
3	EA	Surface Closer	DC6200	689	(CL-4) Corbin Russwin
3	EA	Kickplate	K1050 36" x 46" 4BE CSK	US32D	(KP-9) Rockwood
3	EA	Kickplate	K1050 4" x 47" 4BE CSK	US32D	(KP-12) Rockwood
3	EA	Wall Stop	409	US26D	(ST-2) Rockwood
3	EA	Gasketing	S88BL 18'		(GA-7) Pemko
3	EA	ElectroLynx Harness	QC-C306P		(EA-2) McKinney
3	EA	ElectroLynx Harness	QC-C1500P		(EA-3) McKinney
3		Security Contact	2757D	32D	(EC-1) GE
3	EA	Power Supply	BPS-24-1		(PS-1) Securitron

Hardware Schedule

Project ID: SG0034

North Oaks Cafeteria Renovation & Emergency

Heading #: 29.1

3670 WD NR

1 SGL Door: 1E207 CORR 1E145 TO DATA 1E207 LH
3' 6" x 7' 0" x 1 3/4" WDD/HMF

2 EA	Hinge	T4A3786 5" x 4-1/2"	US26D	(HI-3) McKinney
1 EA	Hinge	T4A3786 QC8 5" x 4-1/2"	US26D	(HI-4) McKinney
1 EA	Fail Secure Lock	ML20905 LSA M92 7P	626	(LO-5) Corbin Russwin
1 EA	Surface Closer	DC6200	689	(CL-4) Corbin Russwin
1 EA	Kickplate	K1050 36" x 40" 4BE CSK	US32D	(KP-8) Rockwood
1 EA	Kickplate	K1050 4" x 41" 4BE CSK	US32D	(KP-13) Rockwood
1 EA	Wall Stop	409	US26D	(ST-2) Rockwood
1 EA	Gasketing	S88BL 18'		(GA-7) Pemko
1 EA	ElectroLynx Harness	QC-C306P		(EA-2) McKinney
1 EA	ElectroLynx Harness	QC-C1500P		(EA-3) McKinney
1	Security Contact	2757D	32D	(EC-1) GE
1 EA	Power Supply	BPS-24-1		(PS-1) Securitron

Heading #: 30

3070 WD

1 SGL Door: 1E105 CORR 1E130 TO SHELL 1E105 LH
1 SGL Door: 1E203 CORR 1E145 TO STAFF LOUNGE 1E203 LH

3' 0" x 7' 0" x 1 3/4" WDD/HMF

4 EA	Hinge	TA2714 4-1/2" x 4-1/2"	US26D	(HI-1) McKinney
2 EA	Hinge	TA2714 QC8 4-1/2" x 4-1/2"	US26D	(HI-2) McKinney
2 EA	Fail Secure Lock	ML20905 LSA M92 7P	626	(LO-5) Corbin Russwin
2 EA	Surface Closer	DC6200	689	(CL-4) Corbin Russwin
2 EA	Kickplate	K1050 8" x 34" 4BE CSK	US32D	(KP-1) Rockwood
2 EA	Kickplate	K1050 4" x 35" 4BE CSK	US32D	(KP-3) Rockwood
2 EA	Wall Stop	409	US26D	(ST-2) Rockwood
6 EA	Silencer	608		(SI-1) Rockwood
2 EA	ElectroLynx Harness	QC-C306P		(EA-2) McKinney
2 EA	ElectroLynx Harness	QC-C1500P		(EA-3) McKinney
2	Security Contact	2757D	32D	(EC-1) GE
2 EA	Power Supply	BPS-24-1		(PS-1) Securitron

Heading #: 30.1

3070 WD

1 SGL Door: TX-114 CORR T-X104 FROM EMERG T-X114 RHR
3' 0" x 7' 0" x 1 3/4" WDD/HMF

2 EA	Hinge	TA2714 4-1/2" x 4-1/2"	US26D	(HI-1) McKinney
1 EA	Hinge	TA2714 QC8 4-1/2" x 4-1/2"	US26D	(HI-2) McKinney
1 EA	Fail Secure Lock	ML20905 LSA M92 7P	626	(LO-5) Corbin Russwin
1 EA	Surface Closer	DC6210 A11	689	(CL-1) Corbin Russwin
1 EA	Kickplate	K1050 8" x 34" 4BE CSK	US32D	(KP-1) Rockwood
1 EA	Kickplate	K1050 4" x 35" 4BE CSK	US32D	(KP-3) Rockwood
3 EA	Silencer	608		(SI-1) Rockwood
1 EA	ElectroLynx Harness	QC-C306P		(EA-2) McKinney
1 EA	ElectroLynx Harness	QC-C1500P		(EA-3) McKinney
1	Security Contact	2757D	32D	(EC-1) GE
1 EA	Power Supply	BPS-24-1		(PS-1) Securitron

Hardware Schedule

Project ID: SG0034

North Oaks Cafeteria Renovation & Emergency

Heading #: 31

3670 WD

	1	SGL	Door: 1E108	CORR 1W130 FROM ENV SERV 1E108	LHR	45
	1	SGL	Door: 1E206	CORR 1E145 FROM ELEC 1E207	LHR	
3' 6" x 7' 0" x 1 3/4" WDD/HMF						
4	EA	Hinge	T4A3786 5" x 4-1/2"		US26D	(HI-3) McKinney
2	EA	Hinge	T4A3786 QC8 5" x 4-1/2"		US26D	(HI-4) McKinney
2	EA	Fail Secure Lock	ML20905 LSA M92 7P		626	(LO-5) Corbin Russwin
2	EA	Surface Closer	DC6210 A11		689	(CL-1) Corbin Russwin
2	EA	Kickplate	K1050 8" x 40" 4BE CSK		US32D	(KP-7) Rockwood
2	EA	Kickplate	K1050 4" x 41" 4BE CSK		US32D	(KP-13) Rockwood
2	EA	Gasketing	S88BL 18'			(GA-7) Pemko
2	EA	ElectroLynx Harness	QC-C306P			(EA-2) McKinney
2	EA	ElectroLynx Harness	QC-C1500P			(EA-3) McKinney
2		Security Contact	2757D		32D	(EC-1) GE
2	EA	Power Supply	BPS-24-1			(PS-1) Securitron

Heading #: 32

4076 AL

	1	SGL	Door: 1E240	TRIAGE WAIT 1E261 FROM TRIAGE	RHR	
CORR 1E240						
4' 0" x 7' 6" x 1 3/4" Other/						
3	EA	Hinge	TA2714 4-1/2" x 4-1/2"		US26D	(HI-1) McKinney
1	EA	Hinge	TA2714 QC8 4-1/2" x 4-1/2"		US26D	(HI-2) McKinney
1	EA	Fail Secure Lock	ML20905 LSA M92 7P		626	(LO-5) Corbin Russwin
1	EA	Surface Closer	DC6210 A11		689	(CL-1) Corbin Russwin
1	EA	Kickplate	K1050 8" x 46" 4BE CSK		US32D	(KP-10) Rockwood
1	EA	Kickplate	K1050 4" x 47" 4BE CSK		US32D	(KP-12) Rockwood
3	EA	Silencer	608			(SI-1) Rockwood
1	EA	ElectroLynx Harness	QC-C306P			(EA-2) McKinney
1	EA	ElectroLynx Harness	QC-C1500P			(EA-3) McKinney
1		Security Contact	2757D		32D	(EC-1) GE
1	EA	Power Supply	BPS-24-1			(PS-1) Securitron

Needs to be #32

electric hdw. but w/ operator

Heading #: 33

4076 AL

	1	SGL	Door: 1E239	VOLUNTEER 1E266 TO TRIAGE 1E239	RH	
4' 0" x 7' 6" x 1 3/4" Other/						
4	EA	Hinge	TA2714 4-1/2" x 4-1/2"		US26D	(HI-1) McKinney
1	EA	Storeroom Lock	ML2057 LSA 7P		626	(LO-3) Corbin Russwin
1	EA	Electric Strike	1006-12/24		630	(ES-1) HES
1	EA	SMART Pac Bridge Rectifier	2005M3			(ES-2) HES
1	EA	Kickplate	K1050 8" x 46" 4BE CSK		US32D	(KP-10) Rockwood
1	EA	Kickplate	K1050 4" x 47" 4BE CSK		US32D	(KP-12) Rockwood
1	EA	Wall Stop	409		US26D	(ST-2) Rockwood
3	EA	Silencer	608			(SI-1) Rockwood
1	EA	ElectroLynx Harness	QC-C1500P			(EA-3) McKinney
1		Security Contact	2757D		32D	(EC-1) GE
1	EA	Power Supply	BPS-24-1			(PS-1) Securitron

Hardware Schedule

Project ID: SG0034

North Oaks Cafeteria Renovation & Emergency

Heading #: 34

3070 WD

1	SGL	Door: 1E106	CORR 1E130 TO CONSULT 1E106	LH
1	SGL	Door: 1E107	COR 1E107 TO CONSULT 1E107	RH
1	SGL	Door: 1E131	CORR 1E133 TO ON CALL 1E131	LH
1	SGL	Door: 1E147	CORR 1E170 TO OFFICE 1E47	RH
1	SGL	Door: 1E157	CORR 1E167 TO STAFF LOUNGE 1E157	LH
1	SGL	Door: 1E158	CORR 1E158 TO OFFICE 1E158	RH
1	SGL	Door: 1E216	CORR 1E215 TO DICTA 1E216	LH

3' 0" x 7' 0" x 1 3/4" WDD/HMF

21	EA	Hinge	TA2714 4-1/2" x 4-1/2"	US26D	(HI-1) McKinney
7	EA	Office Lock	ML2051 LSA 7P	626	(LO-4) Corbin Russwin
7	EA	Kickplate	K1050 8" x 34" 4BE CSK	US32D	(KP-1) Rockwood
7	EA	Kickplate	K1050 4" x 35" 4BE CSK	US32D	(KP-3) Rockwood
7	EA	Wall Stop	409	US26D	(ST-2) Rockwood
21	EA	Silencer	608		(SI-1) Rockwood
7	EA	Coat Hook	806	US26D	(OT-1) Rockwood

Heading #: 34.1

4070 WD

1	SGL	Door: 1E231	CORR 1E211 TO HYG TREATMNT 1E231	LH
---	-----	-------------	----------------------------------	----

4' 0" x 7' 0" x 1 3/4" WDD/HMF

3	EA	Hinge	T4A3786 5" x 4-1/2"	US26D	(HI-3) McKinney
1	EA	Office Lock	ML2051 LSA 7P	626	(LO-4) Corbin Russwin
1	EA	Kickplate	K1050 8" x 46" 4BE CSK	US32D	(KP-10) Rockwood
1	EA	Kickplate	K1050 4" x 41" 4BE CSK	US32D	(KP-13) Rockwood
1	EA	Wall Stop	409	US26D	(ST-2) Rockwood
3	EA	Silencer	608		(SI-1) Rockwood
1	EA	Coat Hook	806	US26D	(OT-1) Rockwood

Heading #: 35

3076 AL

1	SGL	Door: 1E253B	TRAGE 1E239 TO REGISTRATION 1E253	LH
---	-----	--------------	-----------------------------------	----

3' 0" x 7' 6" x 1 3/4" Other/

4	EA	Hinge	TA2714 4-1/2" x 4-1/2"	US26D	(HI-1) McKinney
1	EA	Office Lock	ML2051 LSA 7P	626	(LO-4) Corbin Russwin
1	EA	Wall Stop	409	US26D	(ST-2) Rockwood
3	EA	Silencer	608		(SI-1) Rockwood
1	EA	Coat Hook	806	US26D	(OT-1) Rockwood

FULL GLASS ALUM DR. AP & MP DELETED

Heading #: 36

3076 AL

1	SGL	Door: 1E250	TRIAGE 1E261 TO RECEPTION 1E250	LH
1	SGL	Door: 1E251B	TRAGE 1E239 TO REGISTRATION 1E251	LH
1	SGL	Door: 1E252B	TRAGE 1E239 TO REGISTRATION 1E252	LH

3' 0" x 7' 6" x 1 3/4" Other/

12	EA	Hinge	TA2714 4-1/2" x 4-1/2"	US26D	(HI-1) McKinney
3	EA	Office Lock	ML2051 LSA 7P	626	(LO-4) Corbin Russwin
3	EA	Wall Stop	409	US26D	(ST-2) Rockwood
9	EA	Silencer	608		(SI-1) Rockwood
3	EA	Coat Hook	806	US26D	(OT-1) Rockwood

FULL GLASS ALUM DR. AP & MP DELETED

Hardware Schedule

Project ID: SG0034

North Oaks Cafeteria Renovation & Emergency

*needs storeroom
function*

Heading #: 37

4070 WD RTD

1 SGL Door: 1M122 CORR 1C116A TO MECH 1M122 RH 20
 1 SGL Door: T-1001A CORR 1E201 TO SHELL T-1001A LH 45
 4' 0" x 7' 0" x 1 3/4" WDD/HMF

2 EA	Continuous Hinge	MCK-25HD Fire Pin Kit 83"	CL	(HC-6) McKinney
2 EA	Classroom Lock	ML2055 LSA 7P	626	(LO-2) Corbin Russwin
2 EA	Surface Closer	DC6200	689	(CL-4) Corbin Russwin
2 EA	Kickplate	K1050 36" x 46" 4BE CSK	US32D	(KP-9) Rockwood
2 EA	Door Stop	442	US26D	(ST-1) Rockwood
2 EA	Gasketing	S88BL 18'		(GA-7) Pemko

Heading #: 37.1

3670 WD RTD

1 SGL Door: T-1002 CORR 1E211 TO SHELL T-1002 RH 45
 3' 6" x 7' 0" x 1 3/4" WDD/HMF

1 EA	Continuous Hinge	MCK-25HD Fire Pin Kit 83"	CL	(HC-6) McKinney
1 EA	Classroom Lock	ML2055 LSA 7P	626	(LO-2) Corbin Russwin
1 EA	Surface Closer	DC6200	689	(CL-4) Corbin Russwin
1 EA	Kickplate	K1050 36" x 40" 4BE CSK	US32D	(KP-8) Rockwood
1 EA	Door Stop	442	US26D	(ST-1) Rockwood
1 EA	Gasketing	S88BL 18'		(GA-7) Pemko

Heading #: 38

3070 WD

1 SGL Door: 1E247
 3' 0" x 7' 0" x 1 3/4" WDD/HMF

3 EA	Hinge	TA2714 4-1/2" x 4-1/2"	US26D	(HI-1) McKinney
1 EA	Classroom Lock	ML2055 LSA 7P	626	(LO-2) Corbin Russwin
1 EA	Surface Closer	DC6200 A1	689	(CL-5) Corbin Russwin
1 EA	Kickplate	K1050 8" x 34" 4BE CSK	US32D	(KP-1) Rockwood
1 EA	Kickplate	K1050 4" x 35" 4BE CSK	US32D	(KP-3) Rockwood
1 EA	Wall Stop	409	US26D	(ST-2) Rockwood
3 EA	Silencer	608		(SI-1) Rockwood

Heading #: 38.1

3070 WD

1 SGL Door: 1E250A TRIAGE WAIT 1E261 TO WORK 1E250A LH
 3' 0" x 7' 6" x 1 3/4" WDD/ALF

4 EA	Hinge	TA2714 4-1/2" x 4-1/2"	US26D	(HI-1) McKinney
1 EA	Classroom Lock	ML2055 LSA 7P	626	(LO-2) Corbin Russwin
1 EA	Surface Closer	DC6200 A1	689	(CL-5) Corbin Russwin
1 EA	Kickplate	K1050 8" x 34" 4BE CSK	US32D	(KP-1) Rockwood
1 EA	Kickplate	K1050 4" x 35" 4BE CSK	US32D	(KP-3) Rockwood
1 EA	Wall Stop	409	US26D	(ST-2) Rockwood
3 EA	Silencer	608		(SI-1) Rockwood

Heading #: 39

4070 WD

1 SGL Door: 1E255 LOBBY 1E259 TO BERVMNT 1E255 RH
 4' 0" x 7' 0" x 1 3/4" WDD/HMF

1 EA	Continuous Hinge	MCK-25HD 83"	CL	(HC-3) McKinney
1 EA	Classroom Lock	ML2055 LSA 7P	626	(LO-2) Corbin Russwin
1 EA	Surface Closer	DC6200	689	(CL-4) Corbin Russwin
1 EA	Kickplate	K1050 36" x 46" 4BE CSK	US32D	(KP-9) Rockwood
1 EA	Kickplate	K1050 4" x 47" 4BE CSK	US32D	(KP-12) Rockwood
1 EA	Wall Stop	409	US26D	(ST-2) Rockwood
3 EA	Silencer	608		(SI-1) Rockwood

Hardware Schedule

Project ID: SG0034

North Oaks Cafeteria Renovation & Emergency

Heading #: 40

3990 WD SLIDING

1	SGL	Door: 1E249A	RECEPTION 1E250 TO COLLECTIONS 1E249	Slider
1	SGL	Door: 1E251A	WORK 1E250A TO REGISTRATION 1E251	Slider
1	SGL	Door: 1E252A	WORK 1E250A TO REGISTRATION 1E252	Slider
1	SGL	Door: 1E253A	WORK 1E250A TO REGISTRATION 1E253	Slider
3' 3" x 9' 0" x 1 3/4" WDD/None				
1	SGL	Door: 1E241	TO	Slider
1	SGL	Door: 1E242A	TRIAGE 1E239 TO TRIAGE 1E242	Slider
1	SGL	Door: 1E243A	TRIAGE 1E239 TO TRIAGE 1E243	Slider
1	SGL	Door: 1E244A	TRIAGE 1E239 TO TRIAGE 1E244	Slider
1	SGL	Door: 1E245A	TRIAGE 1E239 TO TRIAGE 1E245	Slider
1	SGL	Door: 1E246A	TRIAGE 1E239 TO TRIAGE 1E246	Slider
1	SGL	Door: 1E248	CORR 1E236A TO COLLECTIONS 1E248	Slider
1	SGL	Door: 1E249	CORR 1E259 TO COLLECTIONS 1E249	Slider
3' 9" x 9' 0" x 1 3/4" WDD/None				

12	EA	Mortise Deadlock	MS1850SN-050	628	(LO-1) Adams Rite
12	EA	Cylinder	4066	628	(CY-1) Adams Rite
12	EA	Cylinder	1000-114-	626	(CY-2) Corbin Russwin
24	EA	Door Pull	102 BTB	US32D	(PP-3) Rockwood
12	EA	Sliding Door Track	600A		(OT-4) Pemko
24	EA	Clip Stop	601P		(OT-5) Pemko
12	EA	Bottom Guide	106N		(OT-6) Pemko
12	EA	Guide Channel	94A		(OT-7) Pemko
24	EA	Hangers	57B		(OT-8) Pemko

Heading #: 41

3070 POCKET

1	SGL	Door: 1E242B	TRIAGE WRK 1E247 TO TRIAGE 1E242	Pocket
1	SGL	Door: 1E243B	TRIAGE WRK 1E247 TO TRIAGE 1E243	Pocket
1	SGL	Door: 1E244B	TRIAGE WRK 1E247 TO TRIAGE 1E244	Pocket
1	SGL	Door: 1E245B	TRIAGE WRK 1E247 TO TRIAGE 1E245	Pocket
1	SGL	Door: 1E246B	TRIAGE WRK 1E247 TO TRIAGE 1E246	Pocket
3' 0" x 7' 0" x 1 3/4" WDD/HMF				

5	EA	Mortise Deadlock	MS1850SN-050	628	(LO-1) Adams Rite
5	EA	Cylinder	4066	628	(CY-1) Adams Rite
5	EA	Cylinder	1000-114-	626	(CY-2) Corbin Russwin
10	EA	Door Pull	102 BTB	US32D	(PP-3) Rockwood
5	EA	Sliding Door Hdwe	PF28200A6084		(OT-2) Pemko

Heading #: 42

4070 WD

1	SGL	Door: 1E141A	CORR 1E171 FROM TREAT 1E141	LHR
1	SGL	Door: 1E142A	CORR 1E171 FROM TREAT 1E142	LHR
1	SGL	Door: 1E143A	CORR 1E171 FROM TREAT 1E143	LHR
1	SGL	Door: 1E144A	CORR 1E171 FROM TREAT 1E144	LHR
4' 0" x 7' 0" x 1 3/4" WDD/HMF				

4	EA	Hinge	T4A3786 5" x 4-1/2"	US26D	(HI-3) McKinney
4	EA	Passage Latch	8215 ALP	US32D	(LO-8) Sargent
4	EA	Magnetic Lock	M62		(EL-1) Securitron
4	EA	Surface Closer	DC6210 A11	689	(CL-1) Corbin Russwin
4	EA	Kickplate	K1050 36" x 46" 4BE CSK	US32D	(KP-9) Rockwood
4	EA	Kickplate	K1050 4" x 47" 4BE CSK	US32D	(KP-12) Rockwood
4	EA	Wall Stop	409	US26D	(ST-2) Rockwood
12	EA	Silencer	608		(SI-1) Rockwood
4	EA	Security Contact	2757D	32D	(EC-1) GE
4	EA	Power Supply	BPS-24-1		(PS-1) Securitron

needs continuous hinge
we need a closer w/ no exposed arm/leg for patient safety

Hardware Schedule

Project ID: SG0034

North Oaks Cafeteria Renovation & Emergency

Use #A2

Heading #: 42.1

4070 WD

1	SGL	Door: 1E174	CORR 1E175 FROM SEC HOLD 1E174	RHR	
		4' 0" x 7' 0" x 1 3/4" WDD/HMF			
3	EA	Hinge	T4A3786 5" x 4-1/2"	US26D	(HI-3) McKinney
1	EA	Passage Latch	8215 ALP	US32D	(LO-8) Sargent
1	EA	Magnetic Lock	M62		(EL-1) Securitron
1	EA	Surface Closer	DC6210 A11	689	(CL-1) Corbin Russwin
1	EA	Kickplate	K1050 36" x 46" 4BE CSK	US32D	(KP-9) Rockwood
1	EA	Kickplate	K1050 4" x 47" 4BE CSK	US32D	(KP-12) Rockwood
3	EA	Silencer	608		(SI-1) Rockwood
1		Security Contact	2757D	32D	(EC-1) GE
1	EA	Power Supply	BPS-24-1		(PS-1) Securitron

Heading #: 43

4070 WD

1	SGL	Door: 1E112	CORR 1E179 TO EXAM 1E112	LH	
1	SGL	Door: 1E113	CORR 1E179 TO EXAM 1E113	RH	
1	SGL	Door: 1E114	CORR 1E179 TO SANE CON 1E114	RH	
1	SGL	Door: 1E114A	SANE CON 1E114 TO SANE EXAM 1E114A	LH	
1	SGL	Door: 1E115	CORR 1E179 TO EXAM 1E115	RH	
1	SGL	Door: 1E118	CORR 1E125 TO EXAM 1E118	LH	
1	SGL	Door: 1E119	CORR 1E125 TO EXAM 1E119	LH	
1	SGL	Door: 1E122	CORR 1E125 TO EXAM 1E122	RH	
1	SGL	Door: 1E123	CORR 1E126 TO EXAM 1E123	RH	
1	SGL	Door: 1E124	CORR 1E125 TO EXAM 1E124	LH	
1	SGL	Door: 1E130	CORR 1E125 TO EXAM 1E130	LH	
1	SGL	Door: 1E134	CORR 1E60 TO TREAT 1E134	LH	
1	SGL	Door: 1E135	CORR 1E60 TO TREAT 1E135	LH	
1	SGL	Door: 1E136	CORR 1E60 TO TREAT 1E136	LH	
1	SGL	Door: 1E137	CORR 1E60 TO TREAT 1E137	LH	
1	SGL	Door: 1E139	CORR 1E160A TO TREAT 1E139	LH	
1	SGL	Door: 1E140	CORR 1E160A TO TREAT 1E140	LH	
1	SGL	Door: 1E152	CORR 1E167 TO TRTMNT 1E152	RH	
1	SGL	Door: 1E153	CORR 1E167 TO TRTMNT 1E153	RH	
1	SGL	Door: 1E154	CORR 1E167 TO TRTMNT 1E154	RH	
1	SGL	Door: 1E155	CORR 1E167 TO TRTMNT 1E155	RH	
1	SGL	Door: 1E156	CORR 1E167 TO TRTMNT 1E156	LH	
1	SGL	Door: 1E222	CORR 1E221 TO TREAT 1E222	LH	
1	SGL	Door: 1E223	CORR 1E221 TO TREAT 1E223	LH	
1	SGL	Door: 1E224	CORR 1E211 TO TREAT 1E224	LH	
1	SGL	Door: 1E225	CORR 1E211 TO TREAT 1E225	LH	
1	SGL	Door: 1E226	CORR 1E211 TO TREAT 1E226	RH	
1	SGL	Door: 1E227	CORR 1E211 TO TREAT 1E227	LH	
1	SGL	Door: 1E228	CORR 1E211 TO TREAT 1E228	LH	
1	SGL	Door: 1E229	CORR 1E211 TO TREAT 1E229	LH	
1	SGL	Door: 1E230	CORR 1E211 TO TREAT 1E230	LH	
1	SGL	Door: 1E232	CORR 1E215 TO TREAT 1E232	LH	
1	SGL	Door: 1E233	CORR 1E215 TO TREAT 1E233	LH	
1	SGL	Door: 1E234	CORR 1E215 TO TREAT 1E234	LH	
1	SGL	Door: 1E235	CORR 1E215 TO TREAT 1E235	LH	
		4' 0" x 7' 0" x 1 3/4" WDD/HMF			
35	EA	Continuous Hinge	MCK-25HD 83"	CL	(HC-3) McKinney
35	EA	Passage Latch	8215 ALP	US32D	(LO-8) Sargent
35	EA	Kickplate	K1050 36" x 46" 4BE CSK	US32D	(KP-9) Rockwood
35	EA	Kickplate	K1050 4" x 47" 4BE CSK	US32D	(KP-12) Rockwood
35	EA	Wall Stop	409	US26D	(ST-2) Rockwood
105	EA	Silencer	608		(SI-1) Rockwood

Hardware Schedule

Project ID: SG0034

North Oaks Cafeteria Renovation & Emergency

Heading #: 43.1

PR4070/2070 WD

1	PRA/PRI Door: 1E148	CORR 1E175 TO TRAUMA 1E48	LHA/RH
1	PRA/PRI Door: 1E149	CORR 1E175 TO TRAUMA 1E49	LHA/RH
1	PRA/PRI Door: 1E150	CORR 1E175 TO TRAUMA 1E50	RHA/LH
1	PRA/PRI Door: 1E151	CORR 1E175 TO TRAUMA 1E51	RHA/LH

(4' 0") (2' 0") x 7' 0" x 1 3/4" WDD/HMF

8 EA	Continuous Hinge	MCK-25HD 83"	CL (HC-3) McKinney
4 EA	Dust Proof Strike	570	US26D (BO-1) Rockwood
4 EA	Flush Bolt	555	US26D (BO-3) Rockwood
4 EA	Passage Latch	8215 ALP	US32D (LO-8) Sargent
4 EA	Kickplate	K1050 4" x 23" 4BE CSK	US32D (KP-14) Rockwood
4 EA	Kickplate	K1050 36" x 22" 4BE CSK	US32D (KP-15) Rockwood
4 EA	Kickplate	K1050 36" x 46" 4BE CSK	US32D (KP-9) Rockwood
4 EA	Kickplate	K1050 4" x 47" 4BE CSK	US32D (KP-12) Rockwood
8 EA	Wall Stop	409	US26D (ST-2) Rockwood
8 EA	Silencer	608	(SI-1) Rockwood

Heading #: 44

3070 WD

1	SGL Door: 1E138A	ANTE 1E138A TO ISO TREAMNT 1E138 LH	
---	------------------	-------------------------------------	--

3' 0" x 7' 0" x 1 3/4" WDD/HMF

1 EA	Continuous Hinge	MCK-25HD 83"	CL (HC-3) McKinney
1 EA	Passage Latch	8215 ALP	US32D (LO-8) Sargent
1 EA	Surface Closer	DC6200	689 (CL-4) Corbin Russwin
1 EA	Kickplate	K1050 36" x 34" 4BE CSK	US32D (KP-2) Rockwood
1 EA	Kickplate	K1050 4" x 35" 4BE CSK	US32D (KP-3) Rockwood
1 EA	Wall Stop	409	US26D (ST-2) Rockwood
1 EA	Gasketing	S88BL 17'	(GA-3) Pemko

Heading #: 44.1

4070 WD

1	SGL Door: 1E138	CORR 1E160A TO ISO TREAMNT 1E138 LH	
---	-----------------	-------------------------------------	--

4' 0" x 7' 0" x 1 3/4" WDD/HMF

1 EA	Continuous Hinge	MCK-25HD 83"	CL (HC-3) McKinney
1 EA	Passage Latch	8215 ALP	US32D (LO-8) Sargent
1 EA	Surface Closer	DC6200	689 (CL-4) Corbin Russwin
1 EA	Kickplate	K1050 36" x 46" 4BE CSK	US32D (KP-9) Rockwood
1 EA	Kickplate	K1050 4" x 47" 4BE CSK	US32D (KP-12) Rockwood
1 EA	Wall Stop	409	US26D (ST-2) Rockwood
1 EA	Gasketing	S88BL 17'	(GA-3) Pemko

Heading #: 45

3070 WD

1	SGL Door: 1E138B	ISO TREAMNT 1E138 FROM PAT TLT 1E138B	LHR
---	------------------	---------------------------------------	-----

3' 0" x 7' 0" x 1 3/4" WDD/HMF

3 EA	Hinge	TA2714 4-1/2" x 4-1/2"	US26D (HI-1) McKinney
1 EA	Privacy Lock	ML2020 LSA M19V	626 (LO-6) Corbin Russwin
1 EA	Conc Overhead Stop	1-336	630 (OH-2) Rixson
1 EA	Kickplate	K1050 8" x 34" 4BE CSK	US32D (KP-1) Rockwood
1 EA	Kickplate	K1050 4" x 35" 4BE CSK	US32D (KP-3) Rockwood
1 EA	Gasketing	S88BL 17'	(GA-3) Pemko
1 EA	Coat Hook	806	US26D (OT-1) Rockwood

Hardware Schedule

Project ID: SG0034

North Oaks Cafeteria Renovation & Emergency

Heading #: 45.1

3070 WD

	1	SGL	Door: 1E114B	SANE EXAM 1E114A FROM PAT TLT 1E114B	LHR	
	1	SGL	Door: 1E212	CORR 1E211 FROM PAT TLT 1E212	RHR	
	1	SGL	Door: 1E220	CORR 1E221 FROM PAT TLT 1E220	RHR	
	3' 6" x 7' 0" x 1 3/4" WDD/HMF					
9	EA	Hinge	T4A3786 5" x 4-1/2"		US26D	(HI-3) McKinney
3	EA	Privacy Lock	ML2020 LSA M19V		626	(LO-6) Corbin Russwin
3	EA	Conc Overhead Stop	1-436		630	(OH-3) Rixson
3	EA	Kickplate	K1050 8" x 40" 4BE CSK		US32D	(KP-7) Rockwood
3	EA	Kickplate	K1050 4" x 41" 4BE CSK		US32D	(KP-13) Rockwood
3	EA	Gasketing	S88BL 18'			(GA-7) Pemko
3	EA	Coat Hook	806		US26D	(OT-1) Rockwood

Heading #: 46

3670 WD

	1	SGL	Door: 1E238	CORR 1E236A FROM TLT 1E238	RHR	
	1	SGL	Door: 1E255A	BERVMNT 1E255 FROM TLT 1E255A	LHR	
	3' 6" x 7' 0" x 1 3/4" WDD/HMF					
6	EA	Hinge	T4A3786 5" x 4-1/2"		US26D	(HI-3) McKinney
2	EA	Privacy Lock	ML2020 LSA M19V		626	(LO-6) Corbin Russwin
2	EA	Surface Closer	DC6210 A11		689	(CL-1) Corbin Russwin
2	EA	Kickplate	K1050 8" x 40" 4BE CSK		US32D	(KP-7) Rockwood
2	EA	Kickplate	K1050 4" x 41" 4BE CSK		US32D	(KP-13) Rockwood
2	EA	Gasketing	S88BL 18'			(GA-7) Pemko
2	EA	Coat Hook	806		US26D	(OT-1) Rockwood

Heading #: 47

3070 WD

	1	SGL	Door: 1E102	WAIT 1E103 FROM TLT 1E102	RHR	
	1	SGL	Door: 1E104	SHELL 1E105 FROM TLT 1E104	RHR	
	1	SGL	Door: 1E208	CORR 1E145 FROM TLT 1E208	LHR	
	1	SGL	Door: 1E219	CORR 1E218 FROM TLT 1E219	RHR	
	3' 0" x 7' 0" x 1 3/4" WDD/HMF					
12	EA	Hinge	TA2714 4-1/2" x 4-1/2"		US26D	(HI-1) McKinney
4	EA	Privacy Lock	ML2020 LSA M19V		626	(LO-6) Corbin Russwin
4	EA	Surface Closer	DC6210 A11		689	(CL-1) Corbin Russwin
4	EA	Kickplate	K1050 8" x 34" 4BE CSK		US32D	(KP-1) Rockwood
4	EA	Kickplate	K1050 4" x 35" 4BE CSK		US32D	(KP-3) Rockwood
4	EA	Gasketing	S88BL 17'			(GA-3) Pemko
4	EA	Coat Hook	806		US26D	(OT-1) Rockwood

Heading #: 48

4070 AL

	1	SGL	Door: 1E231A	HYG TREATMNT 1E231 TO SHOWER 1E231A	LH	
	4' 0" x 7' 0" x 1 3/4" Other/					
1	EA	Continuous Hinge	MCK-12HD 83"		CL	(HC-1) McKinney
1	EA	Privacy Lock	ML2020 LSA M19V		626	(LO-6) Corbin Russwin
1	EA	Coat Hook	806		US26D	(OT-1) Rockwood

Hardware Schedule

Project ID: SG0034

North Oaks Cafeteria Renovation & Emergency

Heading #: 49

3070 WD

	1 SGL	Door:1E268	VEST 1E267 TO MEN TLT 1E268	LH
	1 SGL	Door:1E269	VEST 1E267 TO WOMEN TLT 1E269	RH
3' 0" x 7' 0" x 1 3/4" WDD/HMF				
6 EA	Hinge	TA2714 4-1/2" x 4-1/2"	US26D	(HI-1) McKinney
2 EA	Deadbolt	DL4117 7P	626	(LO-7) Corbin Russwin
2 EA	Push Plate	70E	US32D	(PP-1) Rockwood
2 EA	Pull Plate	111x70C	US32D	(PP-2) Rockwood
2 EA	Surface Closer	DC6200	689	(CL-4) Corbin Russwin
2 EA	Kickplate	K1050 8" x 34" 4BE CSK	US32D	(KP-1) Rockwood
2 EA	Kickplate	K1050 4" x 35" 4BE CSK	US32D	(KP-3) Rockwood
2 EA	Wall Stop	409	US26D	(ST-2) Rockwood
2 EA	Gasketing	S88BL 17'		(GA-3) Pemko

Heading #: 50

OVERHEAD

	1 SGL	Door:1E141B	TREAT 1E141	NH
	1 SGL	Door:1E142B	TREAT 1E142	NH
	1 SGL	Door:1E143B	TREAT 1E143	NH
	1 SGL	Door:1E144B	TREAT 1E144	NH
	1 SGL	Door:1E271		NH
8' 10" x 9' 0" x 1 3/4" Other/				
5 EA	Cylinder	1000-114-	626	(CY-2) Corbin Russwin

Heading #: 51

EXISTING

	1 SGL	Door:1001A		NH
	1 SGL	Door:1031A		NH
	1 SGL	Door:1051A		NH
	1 SGL	Door:1070		NH
	1 SGL	Door:T-1004B		NH
0" x 0" x 1 3/4" Existing/				
EXISTING OPENING - NO HARDWARE REQUIRED				

Heading #: 52

	1 SGL	Door:T-1004		45
4' 0" x 7' 0" x 1 3/4" WDD/HMF				
VERIFY HARDWARE REQUIRED- NO HARDWARE SHOWN IN HDW SCH				

Heading #: 53

	1 SGL	Door:1X101C		NH
	1 SGL	Door:1X102A		NH
	1 SGL	Door:1X102B		NH
	1 SGL	Door:1X102C		NH
	1 SGL	Door:1X102D		NH
	1 SGL	Door:1X102E		NH
	1 SGL	Door:1X102F		NH
	1 SGL	Door:1X103		NH
9' 6" x 9' 4" x 1 3/4" Other/				
NO HARDWARE REQUIRED				

McKINNEY Hinge Catalog

Full Mortise Bearing Hinges

Five Knuckle Heavy Weight Series

McKinney®
ASSA ABLOY

T4A3386

Stainless steel base or available in brass base material polished and plated or furnished in powder coat.

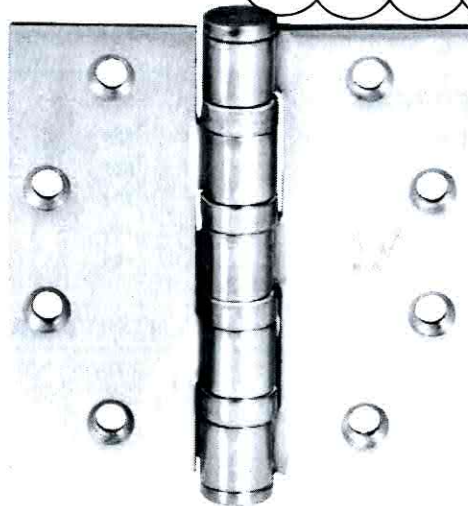
T4A3786

Steel material polished and plated or furnished in powder coat.

Available Options:

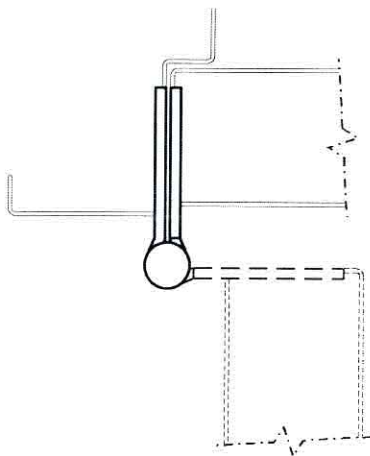
- NRP (non-removable pin)
- T4B (ball bearing)
- TCA (concealed bearing)
- RC (round corner - 1/4" radius furnished unless specified otherwise)
- HT (hospital tip)
- BT (ball tip)
- ST (steeple tip)
- SSF (safety stud feature)
- RB (raised barrel)*
- QC (ElectroLynx hinge) 2, 4, 6, 8, 10 or 12 wire available
- CC (concealed circuit) 4, 6 or 8 wire available**
- MM (magnetic monitoring)
- Beveled Edge (where doors are beveled on hinge side specify T4A4386 or T4A4786)

*Refer to page 98 for raised barrel.



Note: 8" x 6" and 8" x 8" have six bearings. Specify T6B3386 / T6B3786

APPLICATION



Available Sizes

Inches	MM	Gauge
4½ x 4½	114.3 x 114.3	.180
5 x 4½	127 x 114.3	.180
5 x 5	127 x 127	.190
6 x 5	152.4 x 127	.203
6 x 6*	152.4 x 152.4	.203
8 x 6*	203.2 x 152.4	.203
8 x 8*	203.2 x 203.2	.203

* Supplied in Bronze or Steel only

Full Mortise Hinge Fasteners

Inches	MM	Gauge
4½ x 4½	½ x 12-24	1¼ x 12
5 x 4½	½ x 12-24	1¼ x 12
5 x 5	½ x 12-24	1¼ x 12
6 x 5	½ x 1/4-20	1¼ x 14
6 x 6	½ x 1/4-20	1½ x 14
8 x 6	½ x 1/4-20	1½ x 14
8 x 8	½ x 1/4-20	1½ x 14

Packing:

All 5K heavy weight full mortise hinges are packed with all machine and all wood screws. For special screws consult price book on availability.

ANSI Cross Reference:

A2111 Brass
A5111 Stainless
A8111 Steel

Recommended for use on high frequency and/or heavy wood or metal doors in schools, hospitals or other public buildings where heavy traffic is experienced.

36

1-800-346-7707 • www.mckinneyhinge.com

ASSA ABLOY, the global leader in door opening solutions