

In association with
Eley Associates / Architects, P.A.

628 Washington Avenue, Suite C
Ocean Springs, MS 39564
228-762-6775 fax 769-9545

CONSULTANTS

STRUCTURAL

Structural Design Group
Contact: Thomas C. Schaeffer, P.E.
220 Great Circle Road Suite 106
Nashville, TN 37228
Tele: 615-255-5537

MECHANICAL

Eldridge & Associates, P.A.
Contact: Jimmy W. Eldridge, P.E.
604 HWY. 80 West Suite U
Clinton, MS
Tele: 601-925-5258

ELECTRICAL

Watkins & O'Gwynn
Contact: Holden O'Gwynn, Jr., P.E.
4523 Office Park Drive
Jackson, MS 39206
Tele: 601-982-3313

CIVIL

Ford Engineering Services, PLLC
Contact: Joel Ford
2010 Oak Grove Road
Building 4, Suite 1
Hattiesburg, MS 39402
Tele: 601-264-7296

PROFESSIONAL SEALS

PROJECT TITLE

GS# 108-261
**School of Nursing
Building**
University of Southern Mississippi
(Institutions of Higher Learning)
Hattiesburg, MS

ISSUE

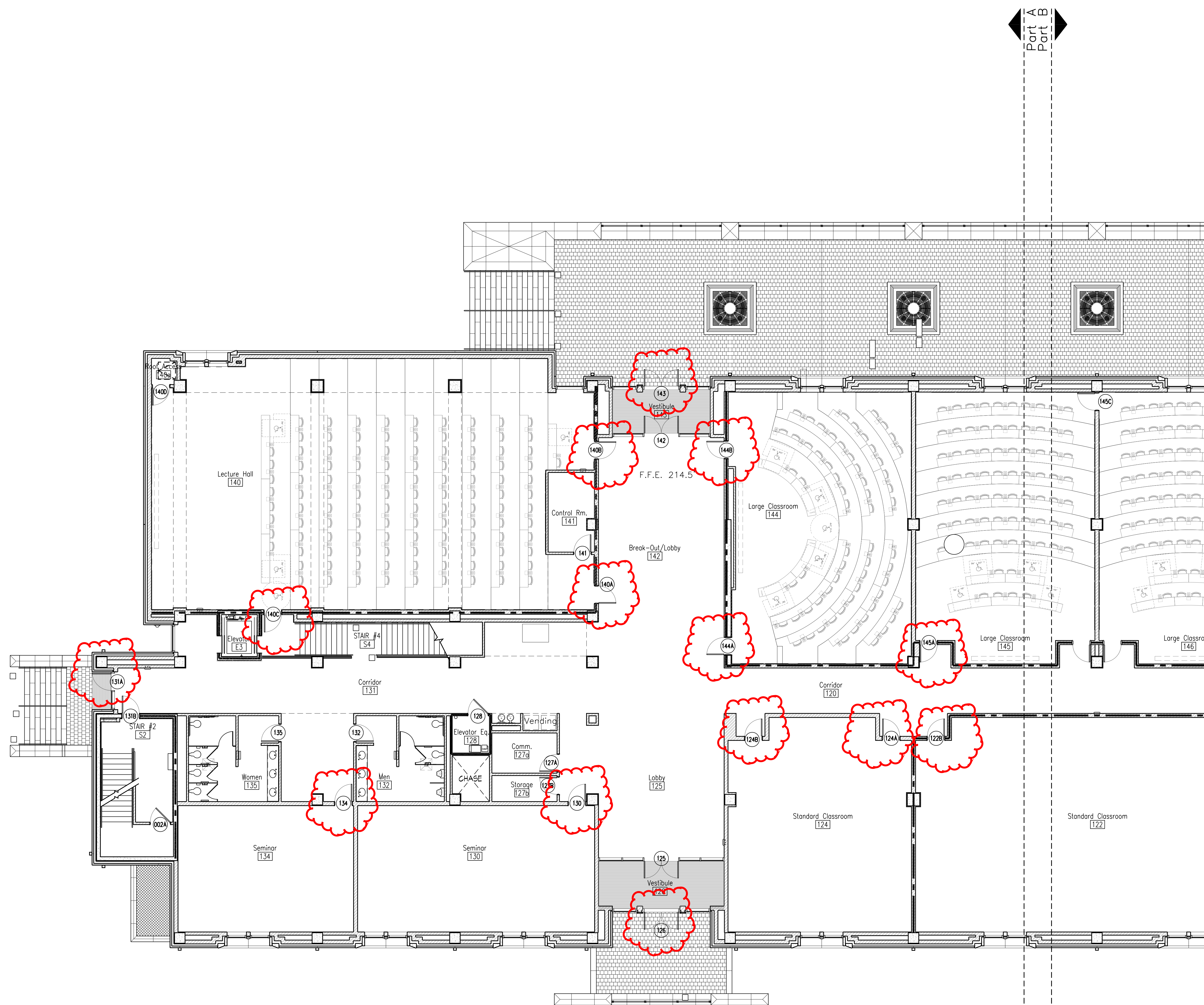
MARK	DATE	DESCRIPTION
	02-21-14	CONSTRUCTION DOCUMENTS
▲	03-18-14	ADDENDUM #1
▲	03-20-14	ADDENDUM #2
▲	03-28-14	ADDENDUM #3
▲	04-01-14	ADDENDUM #4
▲	11-25-14	RFI #11 RESPONSE
▲	03-03-15	OWNER REQUESTED CHANGES
▲	03-21-15	RESPONSE TO RFI #43
▲	06-10-15	RESPONSE TO RFI's #34 & #50

MANAGEMENT

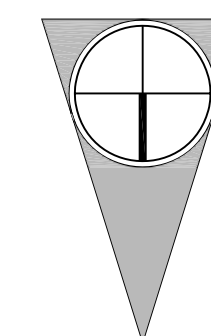
PROJECT NO: 09-50
PROJECT AREA:
CAD DWG FILE:
DRAWN BY: JES
CHECKED BY: HA
SHEET TITLE

FIRST FLOOR PLAN
PART 'A'

A1.05



1 FIRST FLOOR - PART 'A'
A1.05 SCALE: 1/8" = 1'-0"



In association with
Eley Associates / Architects, P.A.

628 Washington Avenue, Suite C
Ocean Springs, MS 39564
228-362-6775 fax 784-9545

CONSULTANTS

STRUCTURAL

Structural Design Group
Contact: Thomas C. Schaeffer, P.E.
220 Great Circle Road Suite 106
Nashville, TN 37228
Tele: 615-255-5537

MECHANICAL

Eldridge & Associates, P.A.
Contact: Jimmy W. Eldridge, P.E.
604 HWY. 80 West Suite U
Clinton, MS
Tele: 601-925-5258

ELECTRICAL

Watkins & O'Gwynn
Contact: Holden O'Gwynn, Jr., P.E.
4523 Office Park Drive
Jackson, MS 39206
Tele: 601-982-3313

CIVIL

Ford Engineering Services, PLLC
Contact: Joel Ford
2010 Oak Grove Road
Building 4, Suite 1
Hattiesburg, MS 39402
Tele: 601-264-7296

PROFESSIONAL SEALS

PROJECT TITLE

GS# 108-261
**School of Nursing
Building**
University of Southern Mississippi
(Institutions of Higher Learning)
Hattiesburg, MS

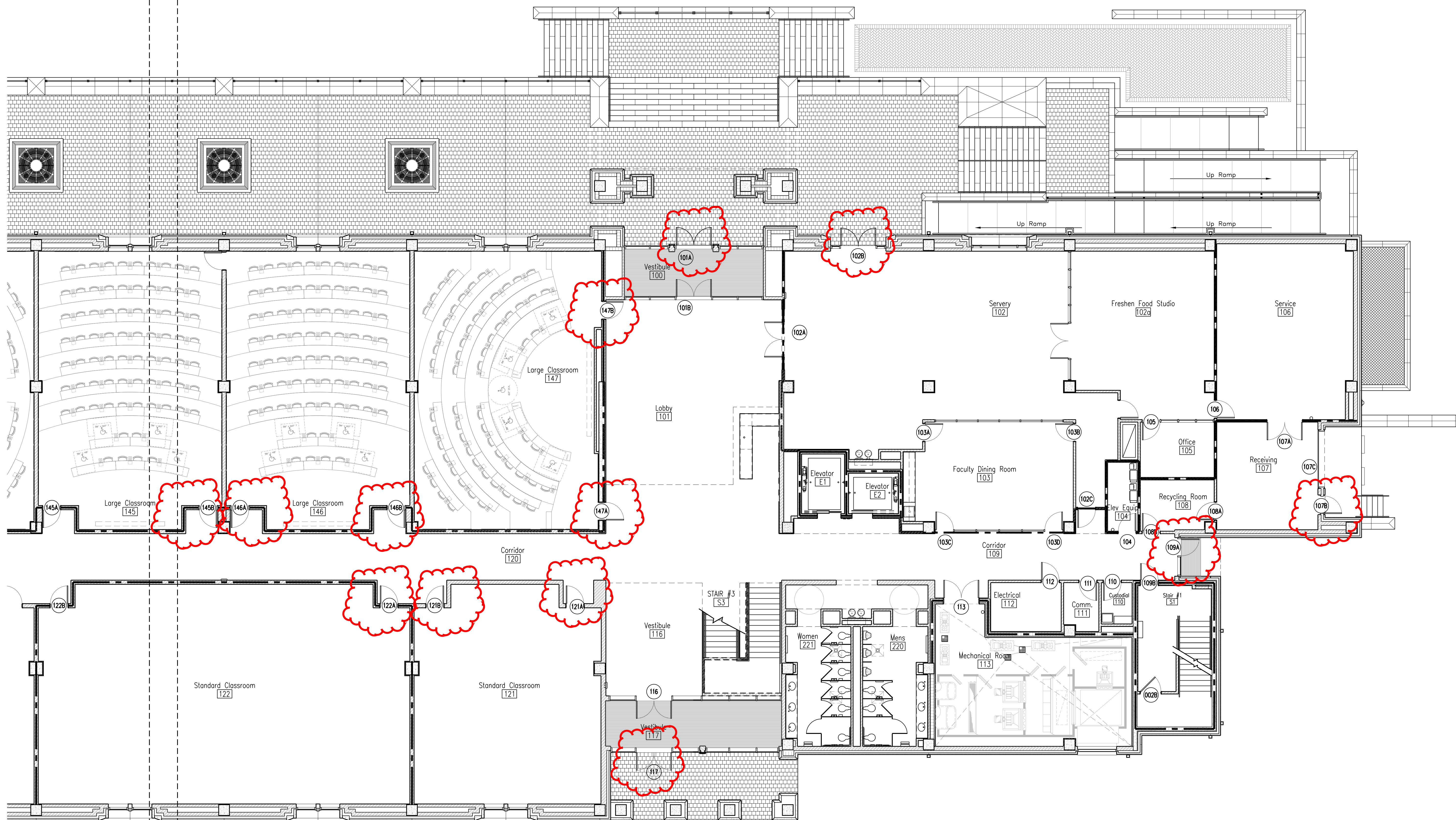
ISSUE

MARK	DATE	DESCRIPTION

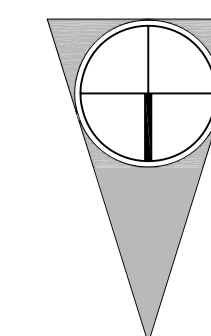
MANAGEMENT

PROJECT NO: 09-50
PROJECT AREA:
CAD DWG FILE:
DRAWN BY: JES
CHECKED BY: HA
SHEET TITLE

FIRST FLOOR PLAN
PART 'B'



1 FIRST FLOOR PLAN - PART B
A1.06 SCALE: 1/8" = 1'-0"



In association with
Eley Associates / Architects, P.A.

628 Washington Avenue, Suite C
Ocean Springs, MS 39564
228-762-6075 Fax 768-9545

CONSULTANTS

STRUCTURAL

Structural Design Group
Contact: Thomas C. Schaeffer, P.E.
220 Great Circle Road Suite 106
Nashville, TN 37228
Tele: 615-255-5537

MECHANICAL

Eldridge & Associates, P.A.
Contact: Jimmy W. Eldridge, P.E.
604 HWY. 80 West Suite U
Clinton, MS
Tele: 601-925-5258

ELECTRICAL

Watkins & O'Gwynn
Contact: Holden O'Gwynn, Jr., P.E.
4523 Office Park Drive
Jackson, MS 39206
Tele: 601-982-3313

CIVIL

Ford Engineering Services, PLLC
Contact: Joel Ford
2010 Oak Grove Road
Building 4, Suite 1
Hattiesburg, MS 39402
Tele: 601-254-7296

PROFESSIONAL SEALS

PROJECT TITLE

GS# 108-261
**School of Nursing
Building**
University of Southern Mississippi
(Institutions of Higher Learning)
Hattiesburg, MS

ISSUE

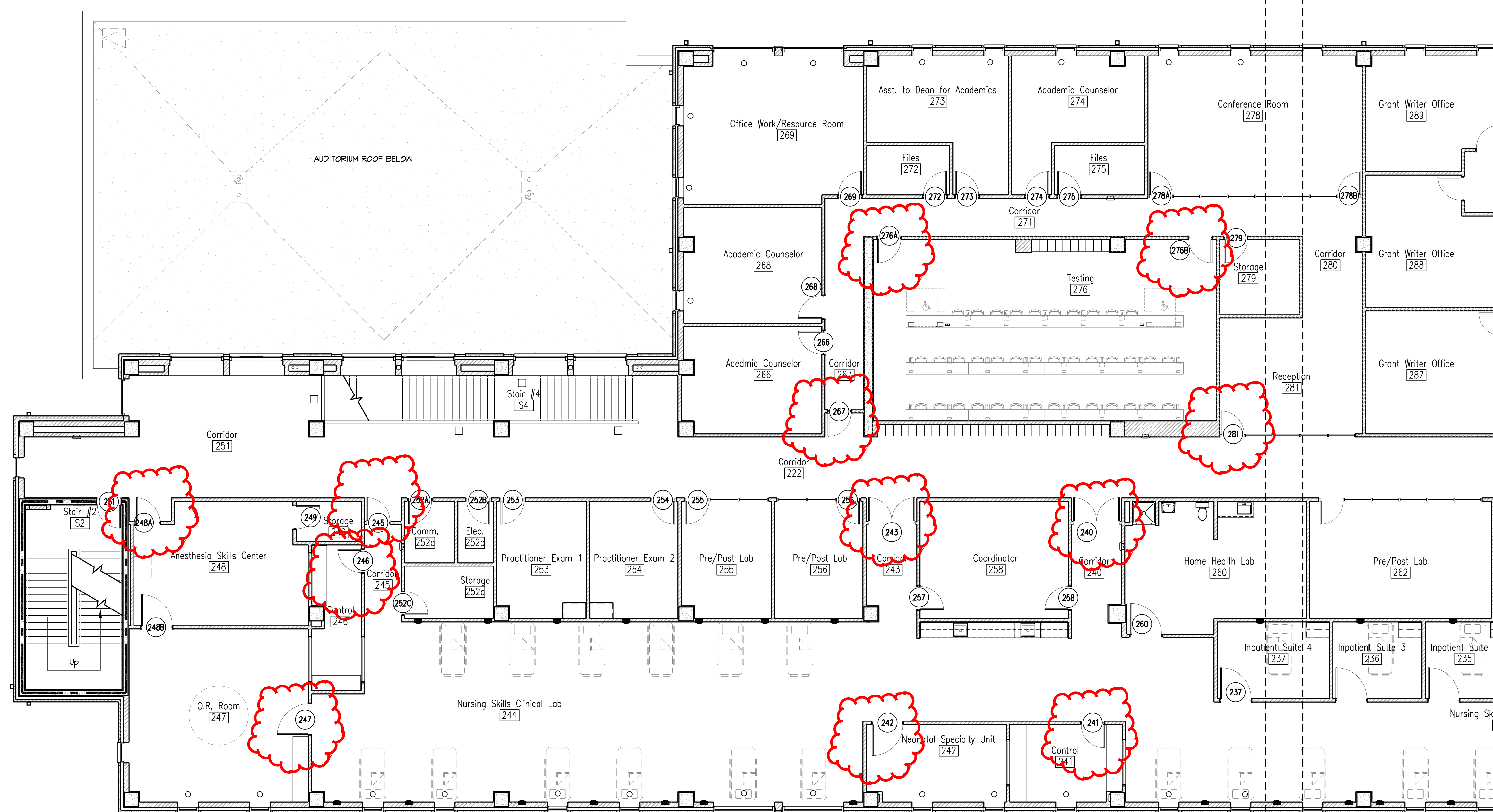
MARK	DATE	DESCRIPTION
	02-21-14	CONSTRUCTION DOCUMENTS
△	03-18-14	ADDENDUM #1
△	03-20-14	ADDENDUM #2
△	03-28-14	ADDENDUM #3
△	04-01-14	ADDENDUM #4
△	11-25-14	RFI #11 RESPONSE
△	03-03-15	OWNER REQUESTED CHANGES
△	05-21-15	RESPONSE TO RFI #43
△	06-10-15	RESPONSE TO RFI's #34 & #50

MANAGEMENT

PROJECT NO: 09-50
PROJECT AREA:
CAD DWG FILE:
DRAWN BY: JES
CHECKED BY: HA
SHEET TITLE

**SECOND FLOOR PLAN
PART 'A'**

A1.08



1 SECOND FLOOR PLAN - PART 'A'
A1.08 SCALE : 1/8" = 1'-0"



In association with
Eley Associates / Architects, P.A.

628 Washington Avenue, Suite C
Ocean Springs, MS 39564
228-762-6775 fax 769-9545

CONSULTANTS

STRUCTURAL

Structural Design Group
Contact: Thomas C. Schaeffer, P.E.
220 Great Circle Road Suite 106
Nashville, TN 37228
Tele: 615-255-5537

MECHANICAL

Eldridge & Associates, P.A.
Contact: Jimmy W. Eldridge, P.E.
604 HWY. 80 West Suite U
Clinton, MS
Tele: 601-925-5258

ELECTRICAL

Watkins & O'Gwynn
Contact: Holden O'Gwynn, Jr., P.E.
4523 Office Park Drive
Jackson, MS 39206
Tele: 601-982-3313

CIVIL

Ford Engineering Services, PLLC
Contact: Joel Ford
2010 Oak Grove Road
Building 4, Suite 1
Hattiesburg, MS 39402
Tele: 601-264-7296

PROFESSIONAL SEALS

PROJECT TITLE

GS# 108-261
**School of Nursing
Building**
University of Southern Mississippi
(Institutions of Higher Learning)
Hattiesburg, MS

ISSUE

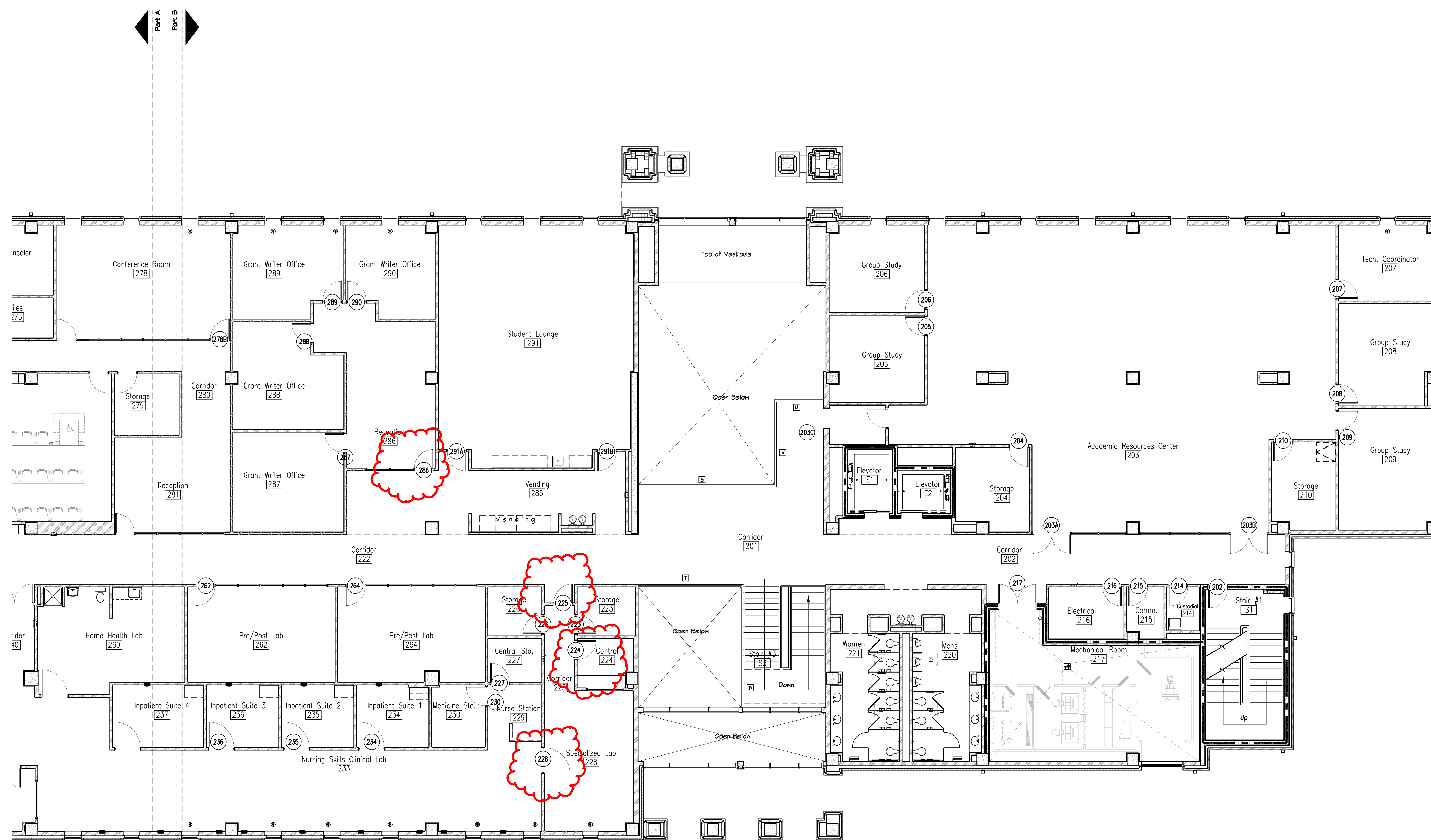
MARK	DATE	DESCRIPTION
	02-21-14	CONSTRUCTION DOCUMENTS
▲	03-18-14	ADDENDUM #1
▲	03-20-14	ADDENDUM #2
▲	03-28-14	ADDENDUM #3
▲	04-01-14	ADDENDUM #4
▲	11-25-14	RFI #11 RESPONSE
▲	03-03-15	OWNER REQUESTED CHANGES
▲	03-21-15	RESPONSE TO RFI #43
▲	06-10-15	RESPONSE TO RFIs #34 & #50

MANAGEMENT

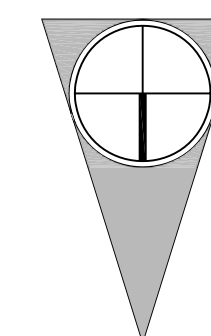
PROJECT NO: 09-50
PROJECT AREA:
CAD DWG FILE:
DRAWN BY: JES
CHECKED BY: HA
SHEET TITLE

**SECOND FLOOR PLAN
PART 'B'**

A1.09



1 SECOND FLOOR PLAN - PART 'B'
A1.09 SCALE : 1/8" = 1'-0"



In association with
Eley Associates / Architects, P.A.

628 Washington Avenue, Suite C
Ocean Springs, MS 39564
228-762-6175 fax 769-9545

CONSULTANTS

STRUCTURAL

Structural Design Group
Contact: Thomas C. Schaeffer, P.E.
220 Great Circle Road Suite 106
Nashville, TN 37228
Tele: 615-255-5537

MECHANICAL

Eldridge & Associates, P.A.
Contact: Jimmy W. Eldridge, P.E.
604 HWY. 80 West Suite U
Clinton, MS
Tele: 601-925-5258

ELECTRICAL

Watkins & O'Gwynn
Contact: Holden O'Gwynn, Jr., P.E.
4523 Office Park Drive
Jackson, MS 39206
Tele: 601-982-3313

CIVIL

Ford Engineering Services, PLLC
Contact: Joel Ford
2010 Oak Grove Road
Building 4, Suite 1
Hattiesburg, MS 39402
Tele: 601-264-7296

PROFESSIONAL SEALS

PROJECT TITLE

GS# 108-261
**School of Nursing
Building**
University of Southern Mississippi
(Institutions of Higher Learning)
Hattiesburg, MS

ISSUE

MARK	DATE	DESCRIPTION

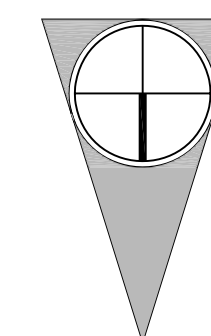
MANAGEMENT

PROJECT NO: 09-50
PROJECT AREA:
CAD DWG FILE:
DRAWN BY: JES
CHECKED BY: HA
SHEET TITLE

THIRD FLOOR PLAN
PART 'A'



1 THIRD FLOOR PLAN - PART 'A'
A1.11 SCALE : 1/8" = 1'-0"



In association with
Eley Associates / Architects, P.A.

628 Washington Avenue, Suite C
Ocean Springs, MS 39564
228-762-6775 fax 769-9545

CONSULTANTS

STRUCTURAL

Structural Design Group
Contact: Thomas C. Schaeffer, P.E.
220 Great Circle Road Suite 106
Nashville, TN 37228
Tele: 615-255-5537

MECHANICAL

Eldridge & Associates, P.A.
Contact: Jimmy W. Eldridge, P.E.
604 HWY. 80 West Suite U
Clinton, MS
Tele: 601-925-5258

ELECTRICAL

Watkins & O'Gwynn
Contact: Holden O'Gwynn, Jr., P.E.
4523 Office Park Drive
Jackson, MS 39206
Tele: 601-982-3313

CIVIL

Ford Engineering Services, PLLC
Contact: Joel Ford
2010 Oak Grove Road
Building 4, Suite 1
Hattiesburg, MS 39402
Tele: 601-264-7296

PROFESSIONAL SEALS

PROJECT TITLE

GS# 108-261
**School of Nursing
Building**
University of Southern Mississippi
(Institutions of Higher Learning)
Hattiesburg, MS

ISSUE

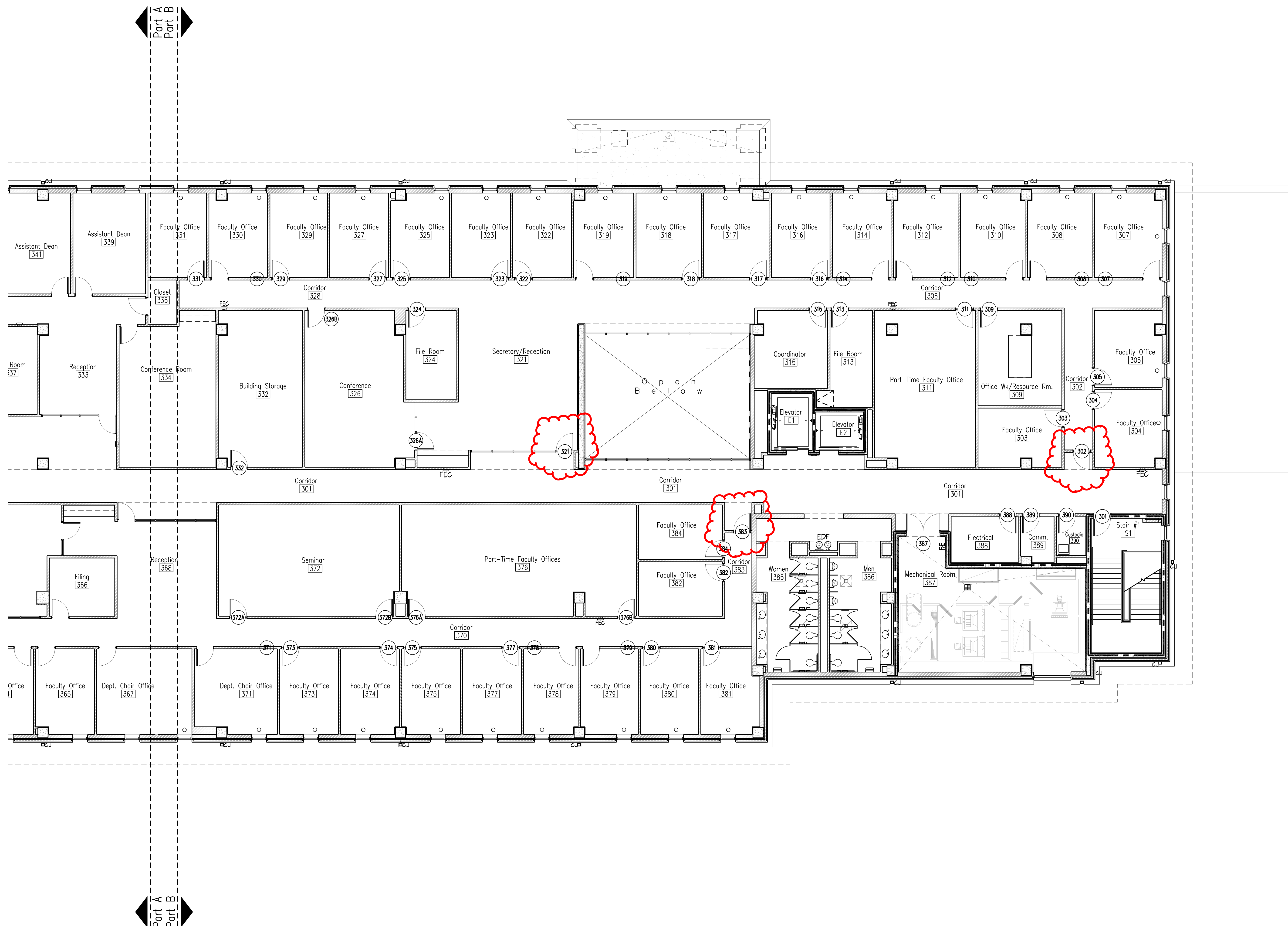
MARK	DATE	DESCRIPTION
	02-21-14	CONSTRUCTION DOCUMENTS
▲	03-18-14	ADDENDUM #1
▲	03-20-14	ADDENDUM #2
▲	03-28-14	ADDENDUM #3
▲	04-01-14	ADDENDUM #4
▲	11-25-14	RFI #1 RESPONSE
▲	03-03-15	OWNER REQUESTED CHANGES
▲	03-21-15	RESPONSE TO RFI #43
▲	06-10-15	RESPONSE TO RFIs #34 & #50

MANAGEMENT

PROJECT NO: 09-50
PROJECT AREA:
CAD DWG FILE:
DRAWN BY: JES
CHECKED BY: HA
SHEET TITLE

THIRD FLOOR PLAN
PART 'B'

A1.12



1 THIRD FLOOR PLAN - PART 'B'
A1.12 SCALE: 1/8" = 1'-0"