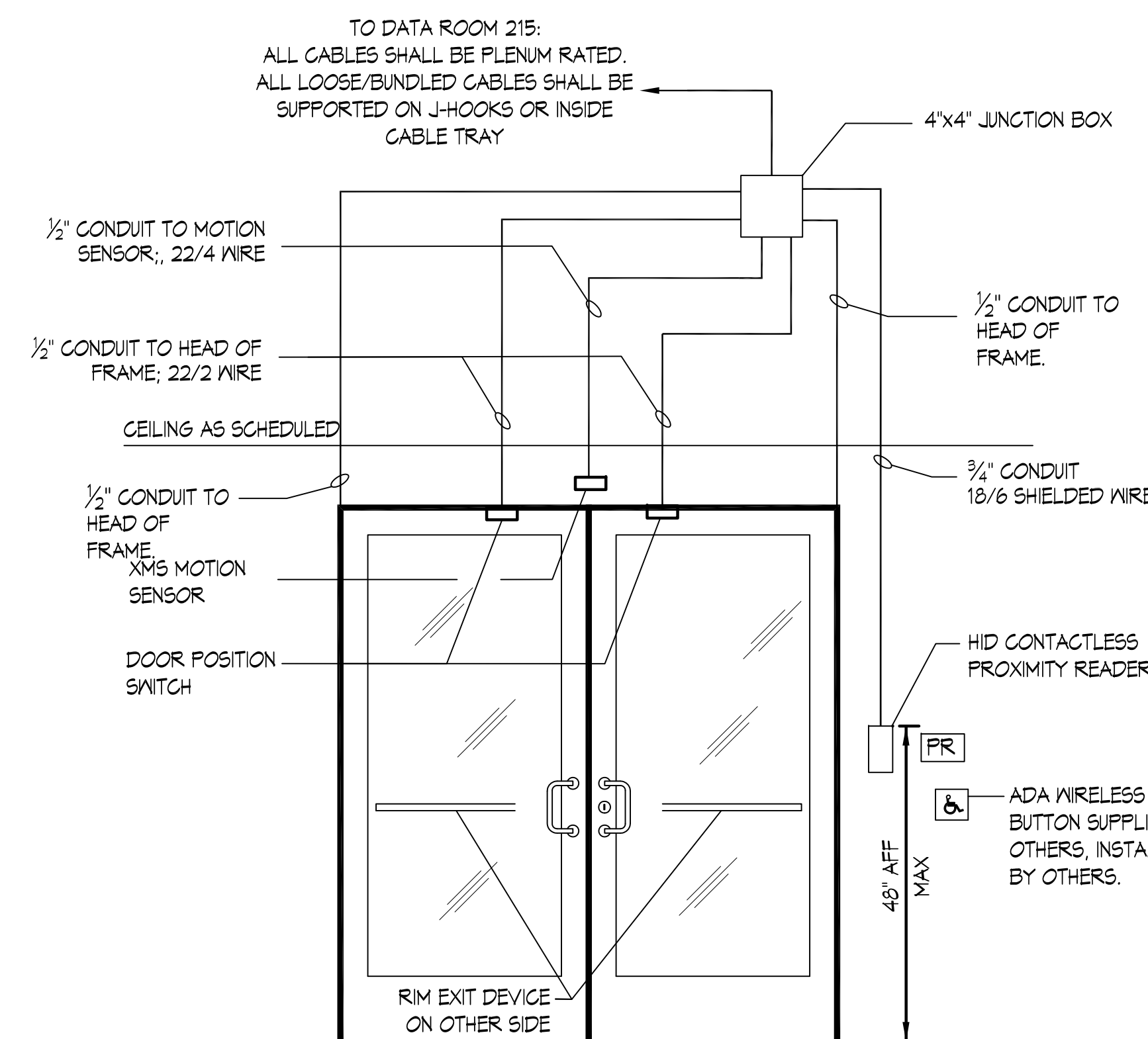


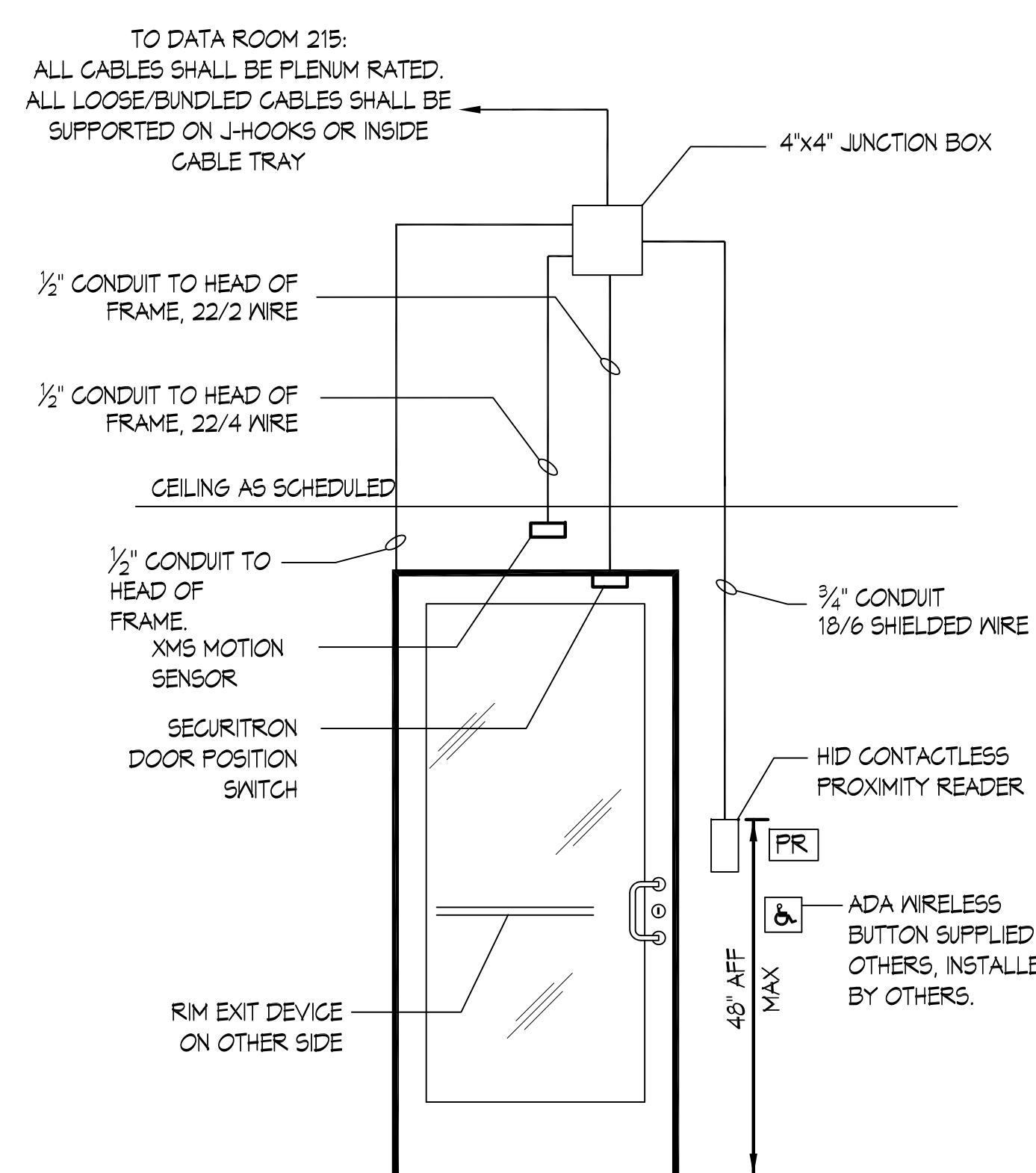
**ACCESS CONTROL SYMBOL LEGEND**

- (141) = DOOR NUMBER
- PR = CONTACTLESS PROXIMITY READER
- DP = DOOR POSITION SWITCH
- MS = MOTION SENSOR
- = CABLING
- - - = FIRE WALL



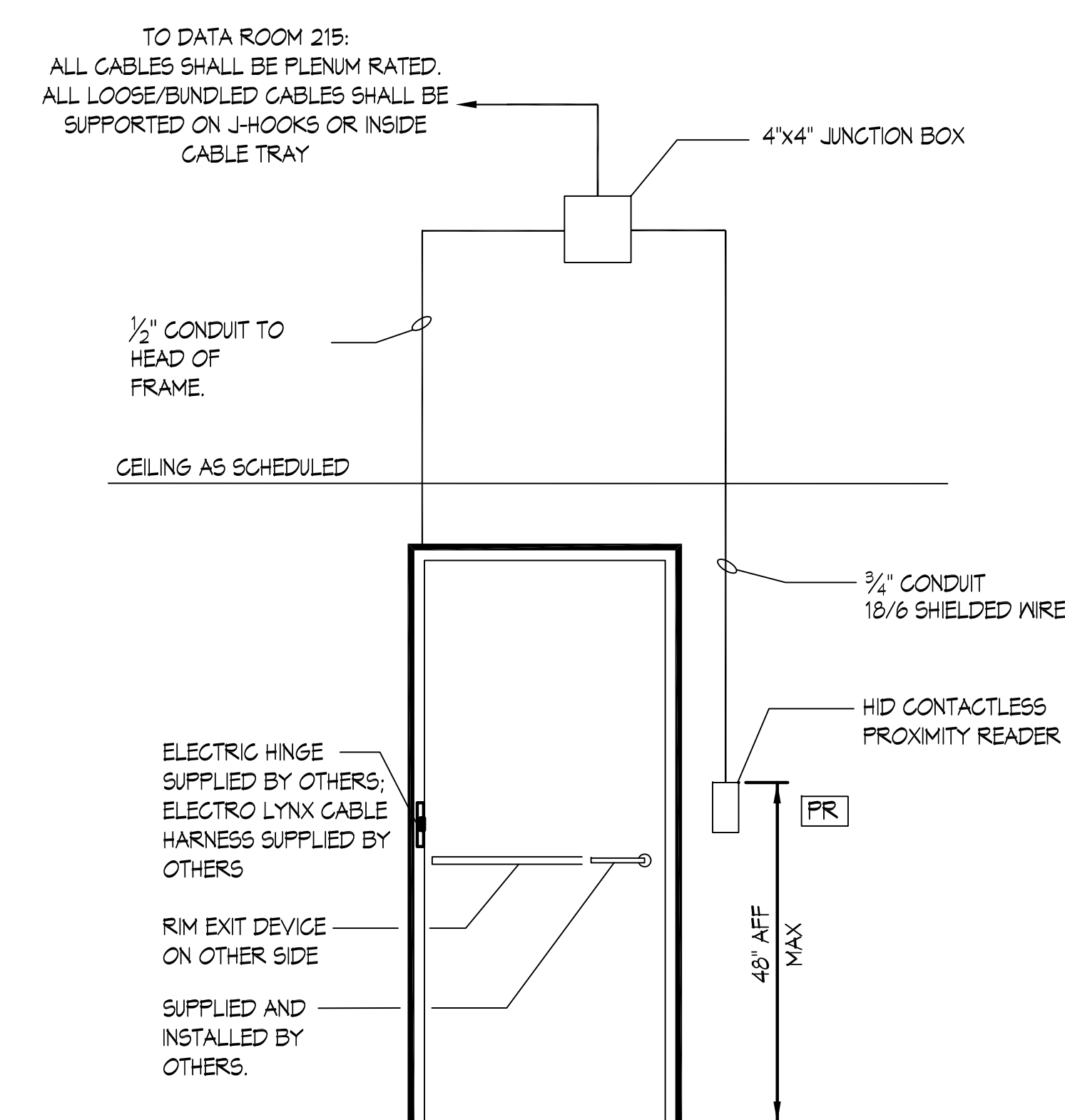
**(A) DOUBLE GLASS DOOR**

- DOORS: 101A  
102B - WITHOUT ADA PUSH BOTTONS-WIRELESS  
117  
126  
143 - WITHOUT ADA PUSH BOTTONS-WIRELESS



**(B) SINGLE GLASS DOOR**

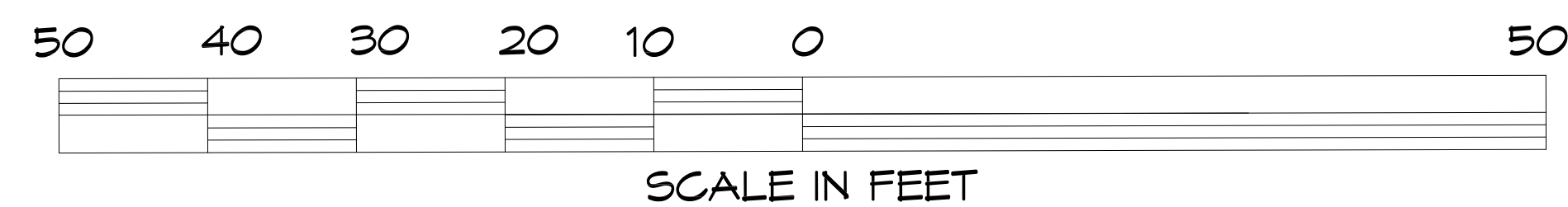
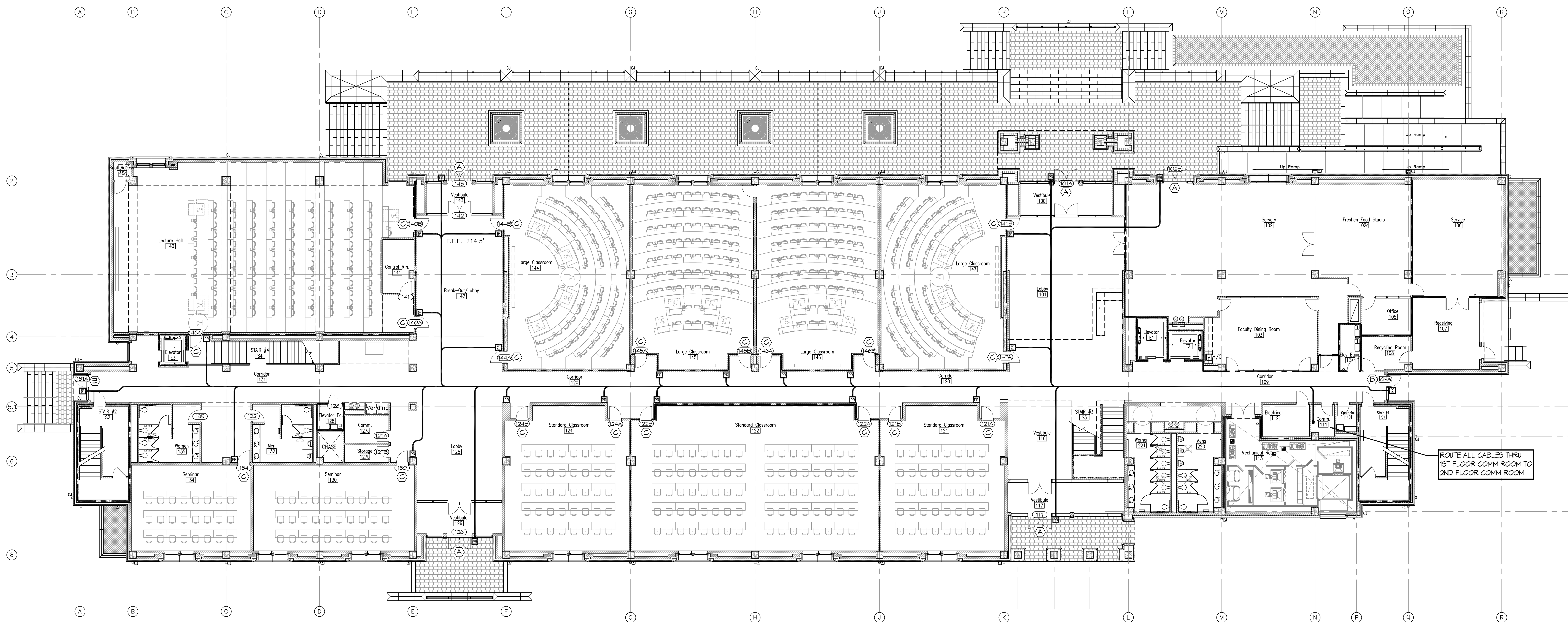
- DOORS: 109A - WITHOUT ADA PUSH BOTTONS-WIRELESS  
131A



**(C) SINGLE DOOR**

- DOORS: 121A 130 144A 146A  
121B 134 144B 146B  
122A 140A 145A 147A  
122B 140B 145B 147B  
124A 140C  
124B

NOTE: PROVIDE FIRE SAFING IN CONDUITS PENETRATING FIRE RATED ASSEMBLIES.



**1ST FLOOR PLAN**  
SCALE: 3/32" = 1'-0"

NO.	DATE	REVISIONS

NO.	DESCRIPTION

SEAL:



IDN-Acme Incorporated  
1504 Justin Rd Metairie, LA  
70001-5995

UNIVERSITY OF SOUTHERN MISSISSIPPI  
**SURVIVAL SECURITY**  
HATTIEBURG, MS  
JOB NO: 2255 DATE: 2/10/2016  
DRAWN BY: RLM CHECKED BY: CAC

SHEET TITLE:  
**1ST FLOOR ACCESS CONTROL PLAN**

DRAWING NUMBER:  
**SEC-1**