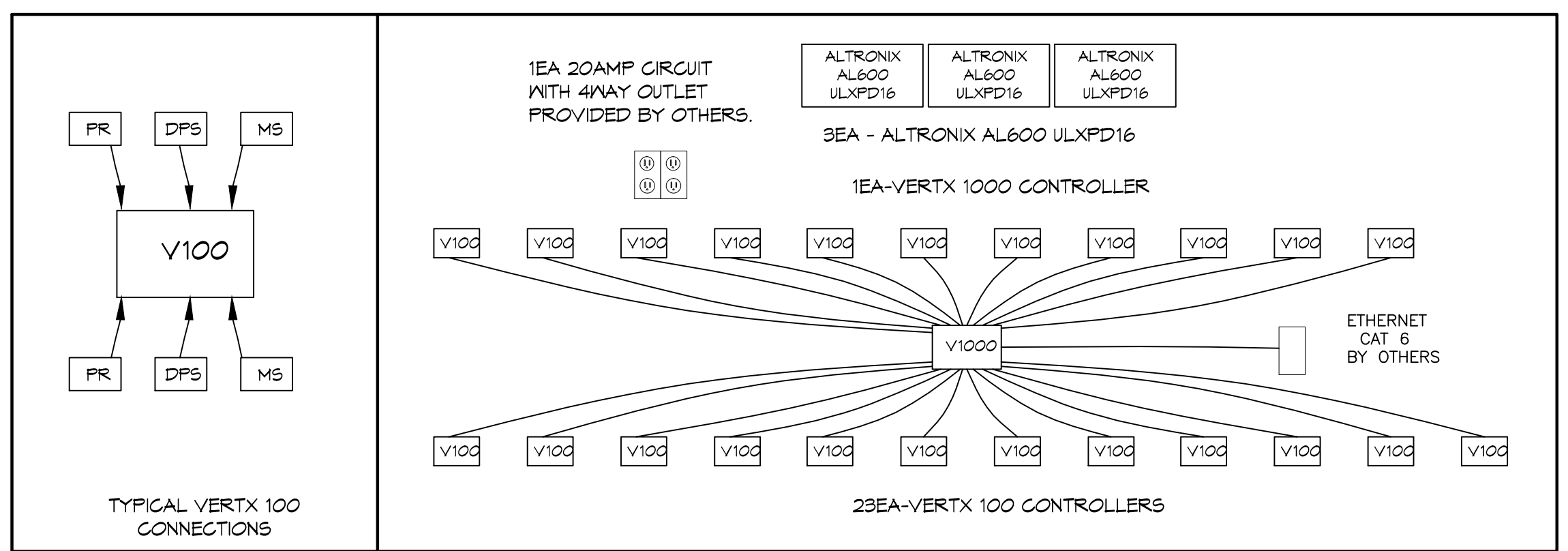
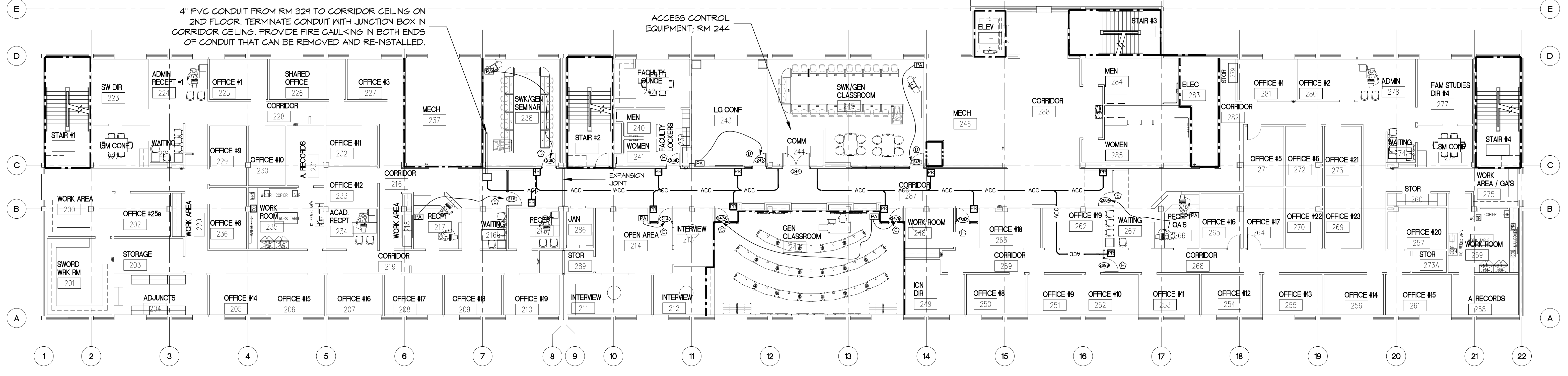
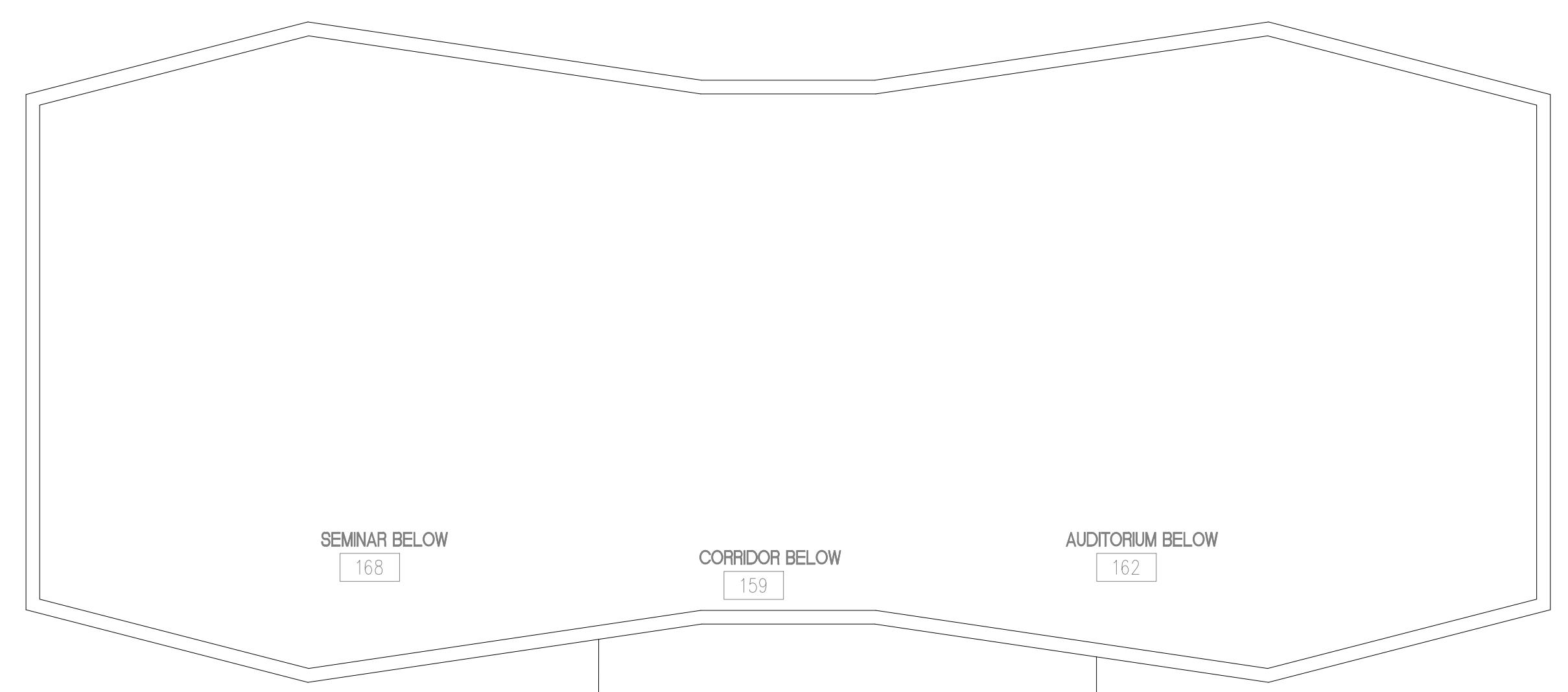
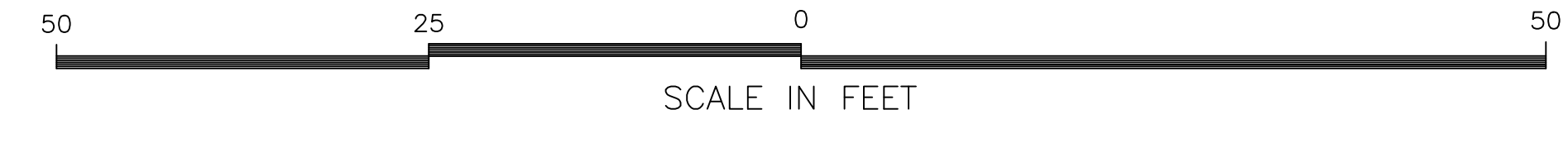




**ACCESS CONTROL SYMBOL LEGEND**

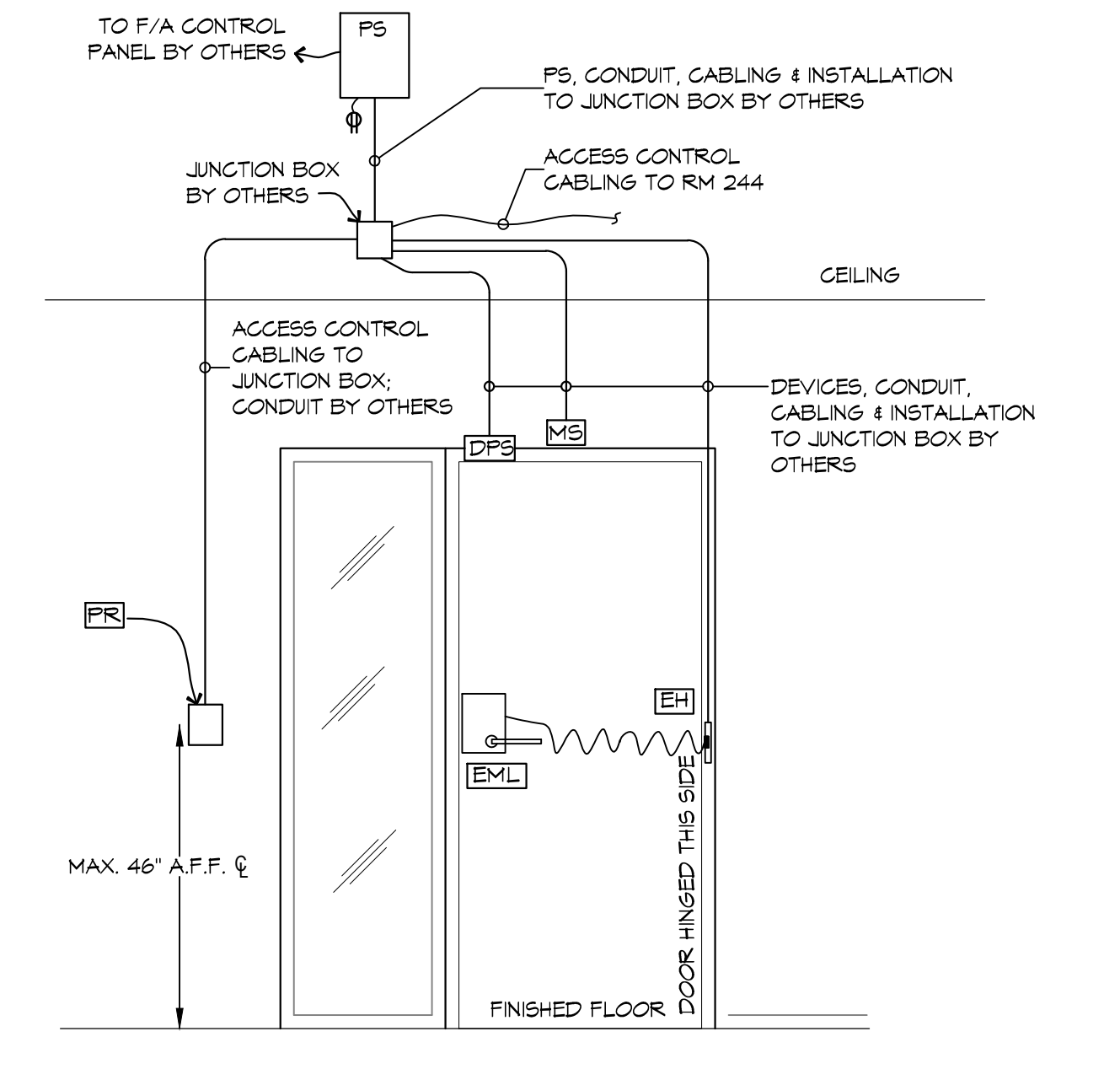
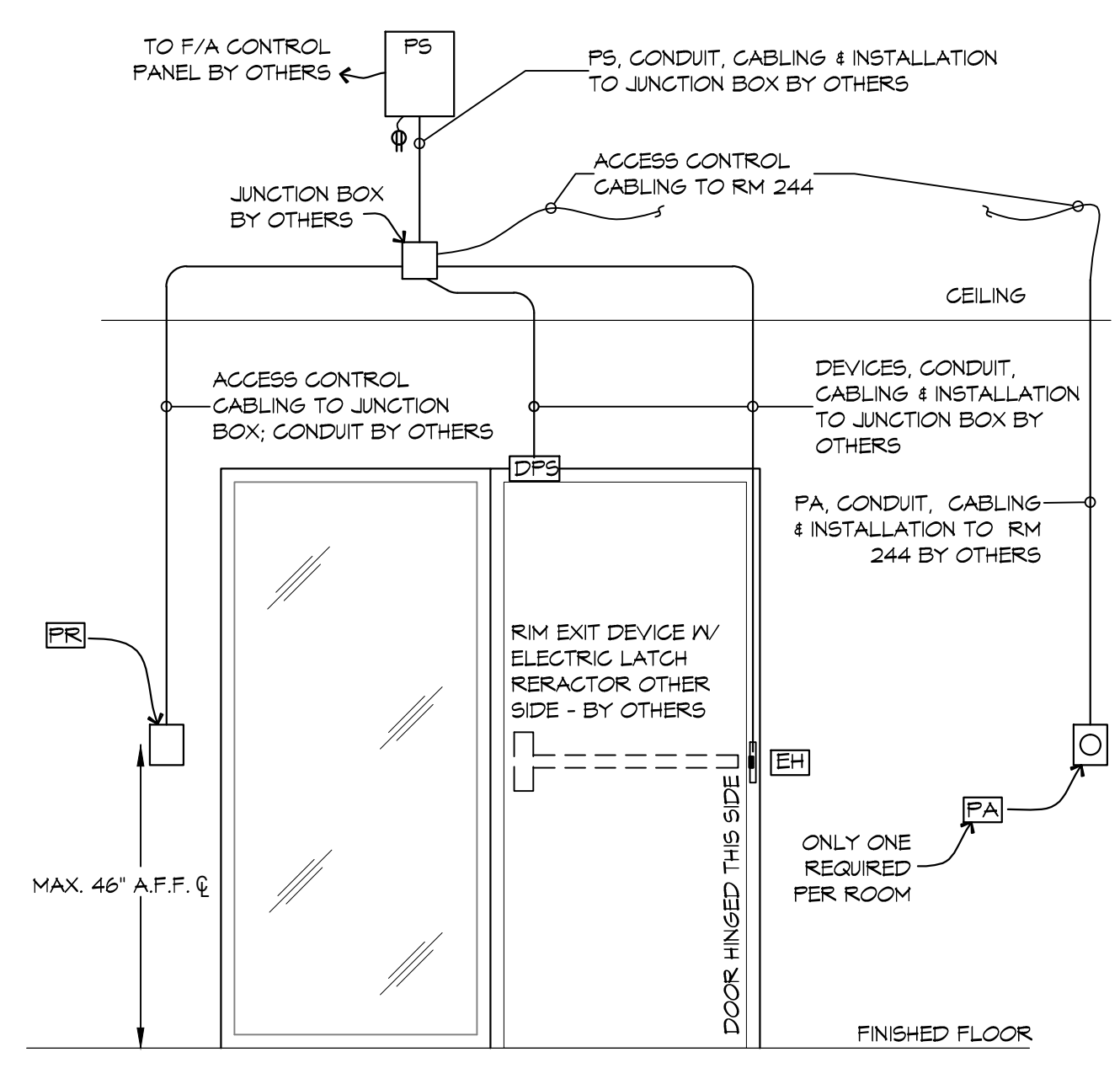
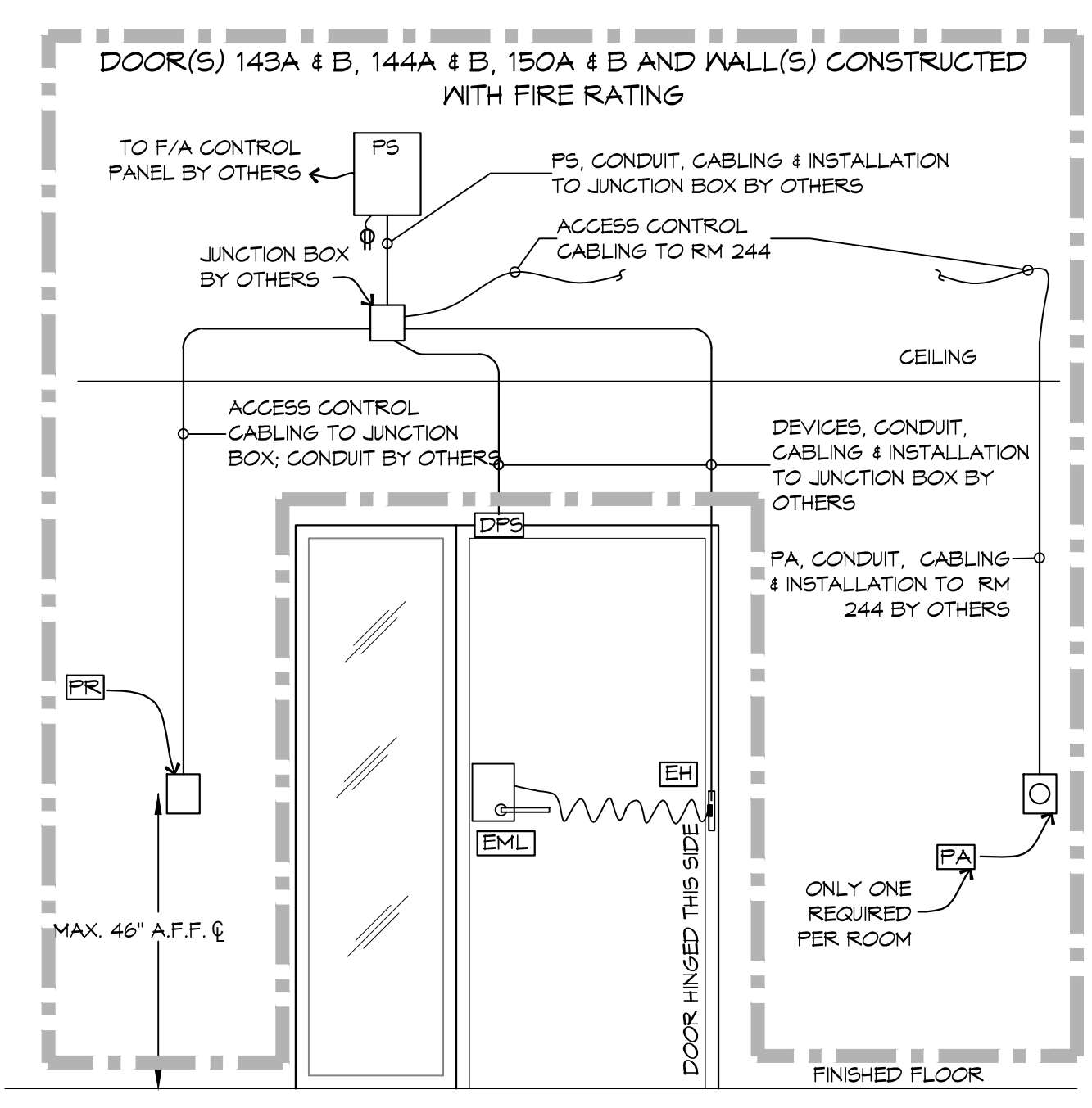
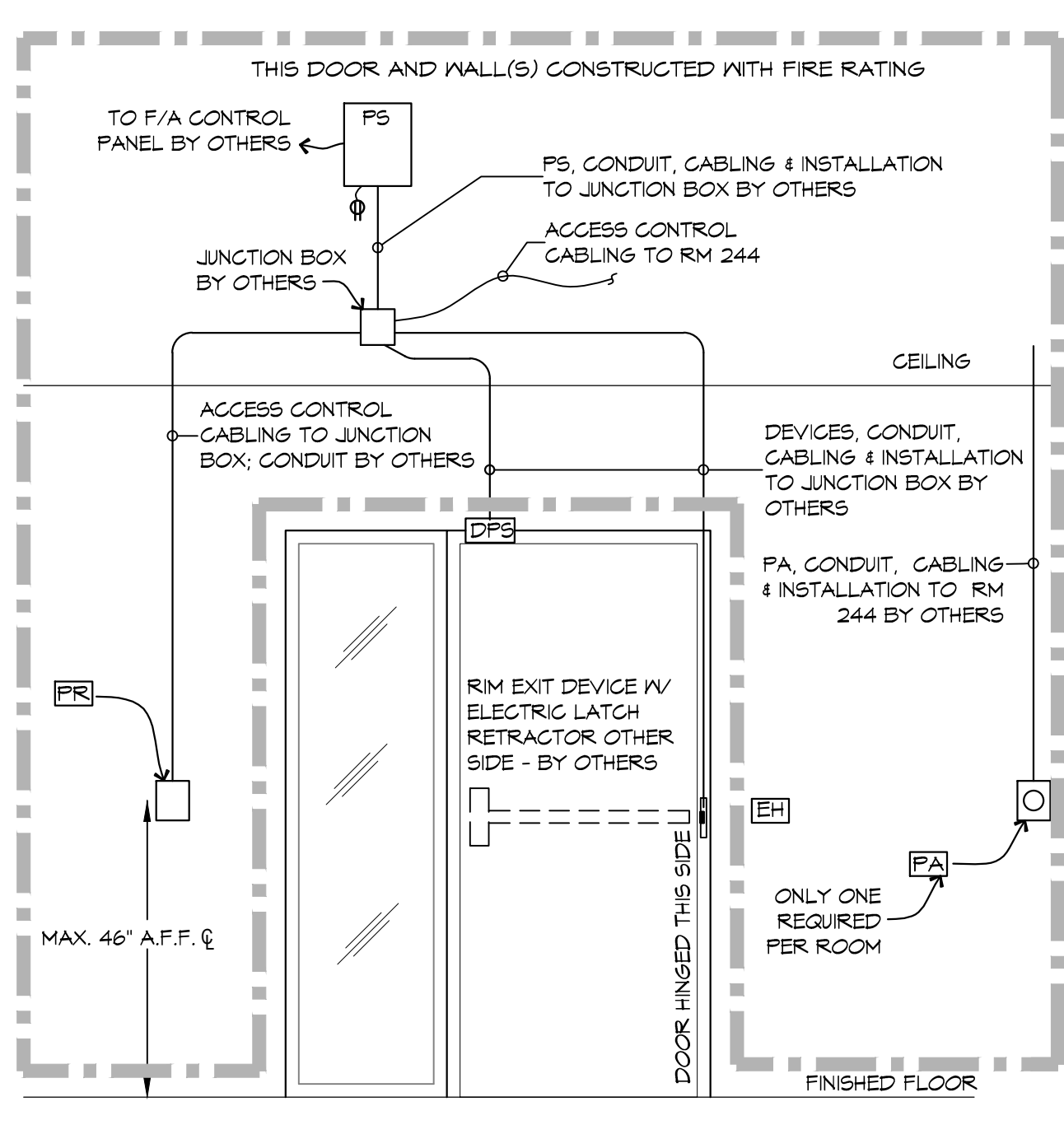
- PR = HID READER
- PB = HANDICAP PUSH BUTTON, BY OTHERS.
- PA = PUSH BUTTON TO LOCK DOORS, BY OTHERS.
- = ARROW INDICATES DOOR(S) THAT PUSH BUTTON LOCKS DOWN
- 214 = DOOR NUMBER
- Ⓜ = HID READER
- ACC = ACCESS CONTROL CABLING
- = 1 HR FIRE RATED MALL
- = 2 HR FIRE RATED MALL



COMM RM 244

**DOOR ACCESS CONTROL LEGEND**

SYMBOL	DESCRIPTION	MOUNTING
△	DOOR DETAIL DESIGNATION	
PS	DOOR POSITION SWITCH (SUPPLIED & INSTALLED BY OTHERS)	BY OTHERS
EH	ELECTRIC POWER TRANSFER HINGE (SUPPLIED & INSTALLED BY OTHERS)	BY OTHERS
EL	RIM EXIT DEVICE WITH ELECTRIC LATCH RETRACTOR (SUPPLIED & INSTALLED BY OTHERS)	BY OTHERS
EML	ELECTRIFIED MORTISE LOCK (SUPPLIED & INSTALLED BY OTHERS)	BY OTHERS
ES	ELECTRIC STRIKE (SUPPLIED & INSTALLED BY OTHERS)	BY OTHERS
MD	MORTISE EXIT DEVICE WITH ELECTRIC LATCH RETRACTOR (SUPPLIED & INSTALLED BY OTHERS)	BY OTHERS
MS	MOTION SENSOR (SUPPLIED & INSTALLED BY OTHERS)	BY OTHERS
PA	PUSH BUTTON EMERGENCY LOCK NEAR PODIUM OR IN ADJACENT SPACE (SUPPLIED & INSTALLED BY OTHERS)	BY OTHERS
PB	ADA PUSH BUTTON (SUPPLIED & INSTALLED BY OTHERS)	BY OTHERS
PD	AUTO DOOR OPERATOR (SUPPLIED & INSTALLED BY OTHERS)	BY OTHERS
PR	HID ICLASS 922 PROXIMITY READER	WALL MAX 46" A.F.F. TO U.G.N.
PS	POWER SUPPLY (SUPPLIED & INSTALLED BY OTHERS)	BY OTHERS



IDN-Acme Incorporated  
 1504 Justin Rd Metairie, LA  
 70001-5035

**UNIVERSITY OF SOUTHERN MISSISSIPPI**  
**ACCESS CONTROL SYSTEMS**

DATE: 7/15/2018  
 DRAWN BY: [Signature]  
 CHECKED BY: [Signature]

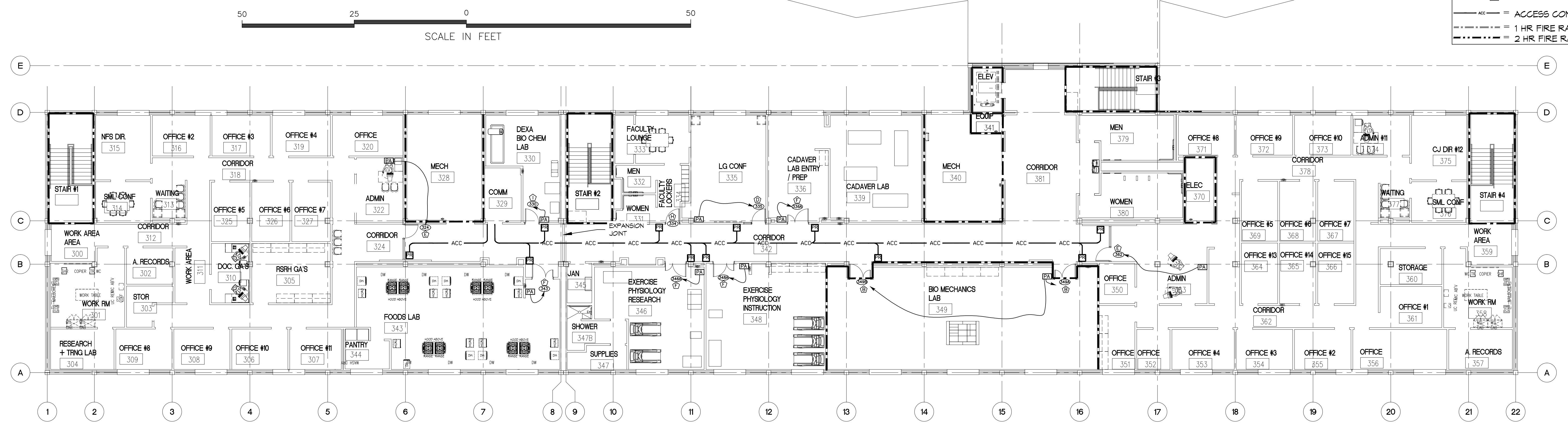
SHEET TITLE:  
 2ND FLOOR ACCESS CONTROL PLAN

DRAWING NUMBER:

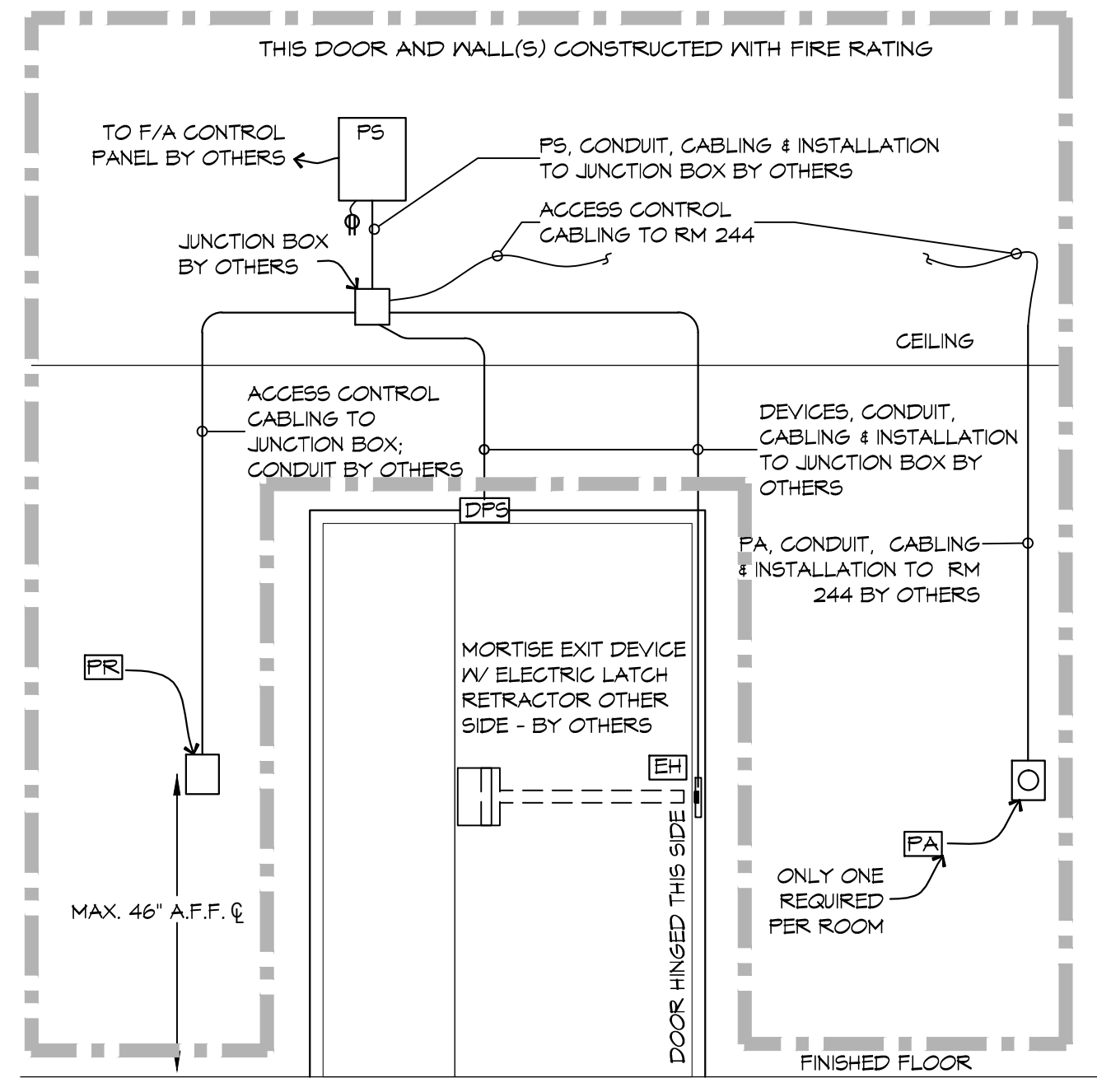
**SEC-2**

**ACCESS CONTROL SYMBOL LEGEND**

- PR = HID READER
- PB = HANDICAP PUSH BUTTON, BY OTHERS.
- PA = PUSH BUTTON TO LOCK DOORS, BY OTHERS.
- = ARROW INDICATES DOOR(S) THAT PUSH BUTTON LOCKS DOWN
- 214 = DOOR NUMBER
- E = HID READER
- ACC = ACCESS CONTROL CABLING
- = 1 HR FIRE RATED WALL
- = 2 HR FIRE RATED WALL



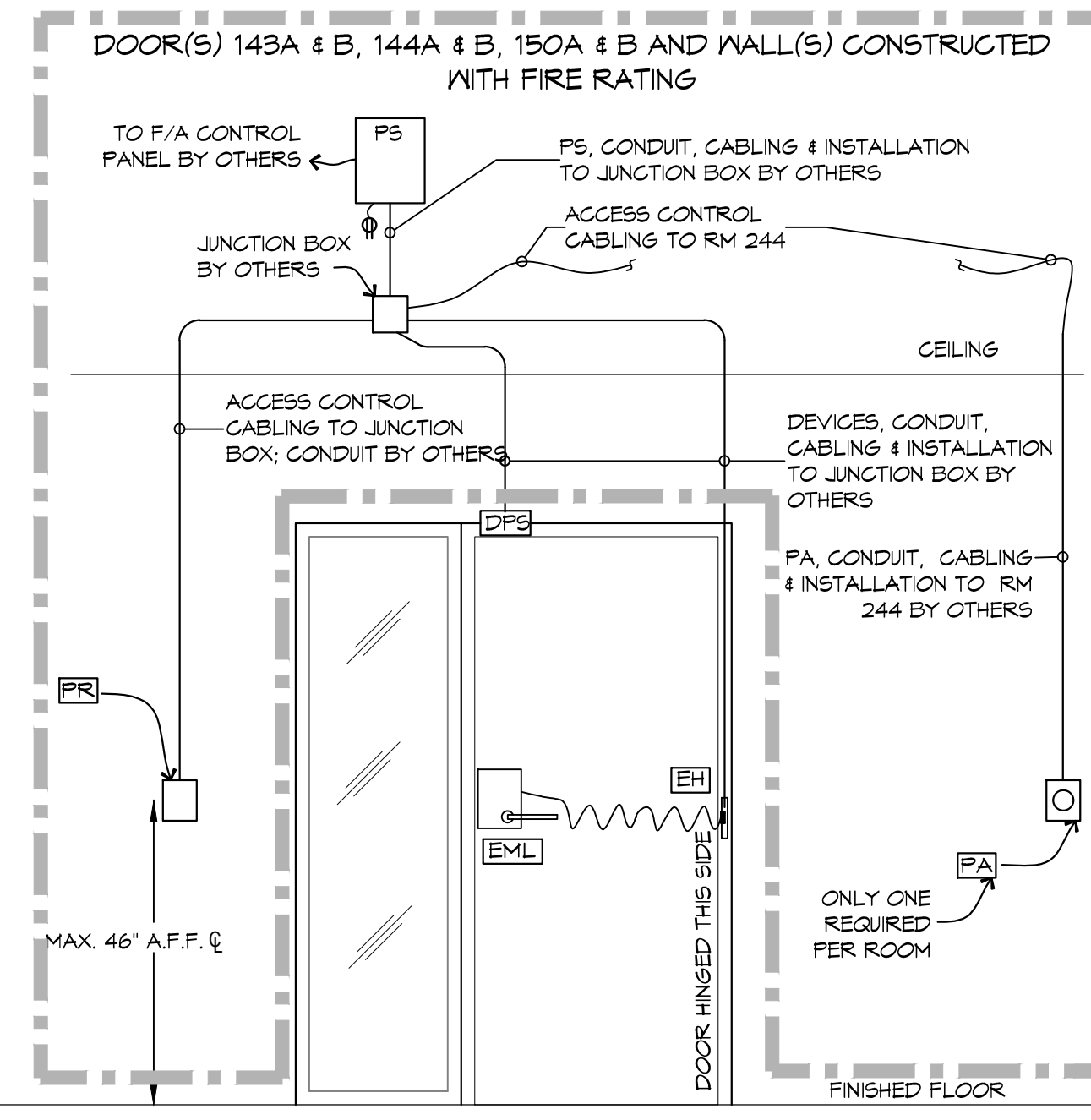
**1 3rd FLOOR**  
 SCALE: 3/32" = 1'-0"



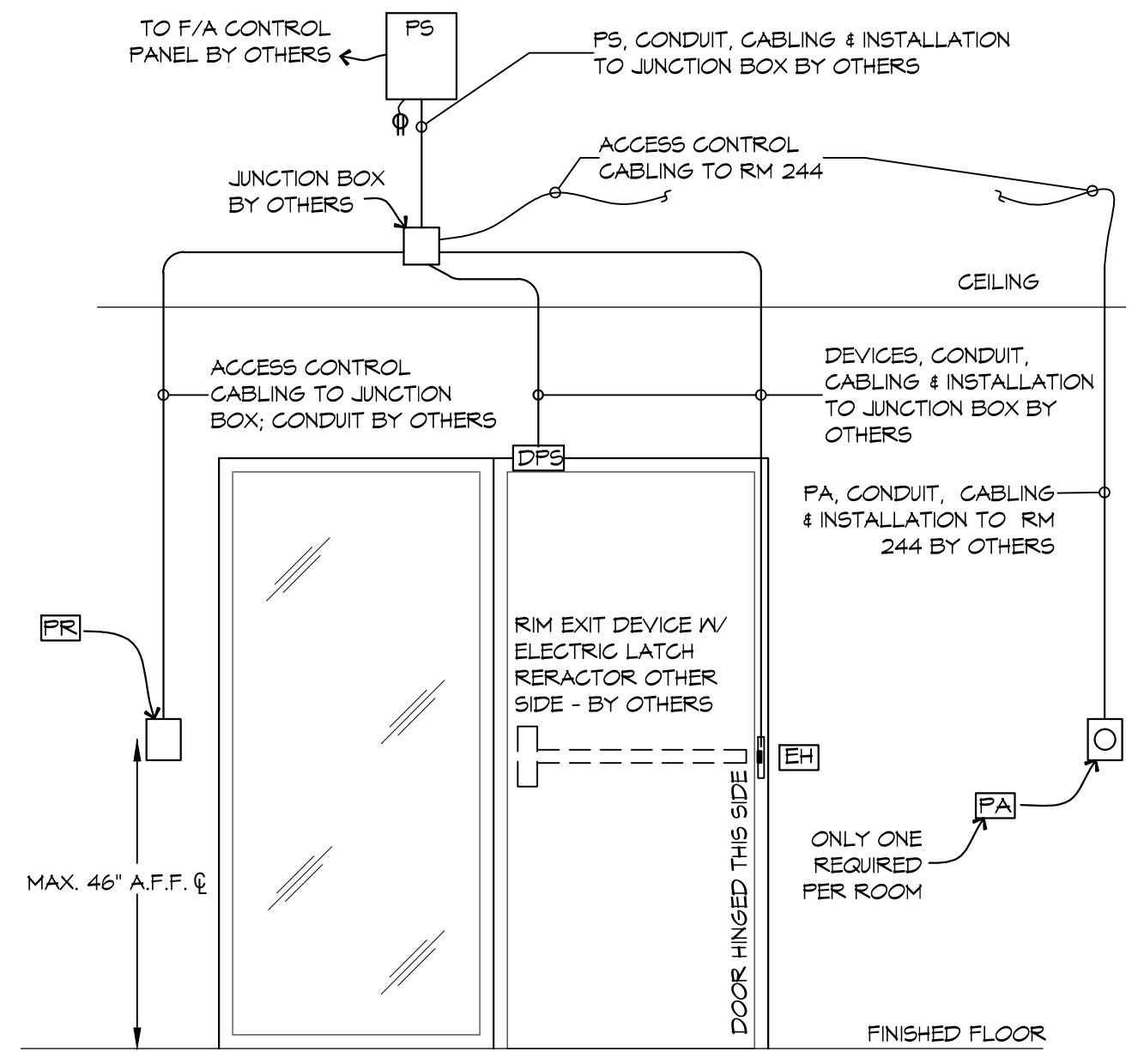
**(B) TYPICAL DOORS: 349A & 349B**  
 (DOOR HARDWARE SET #14)

**DOOR ACCESS CONTROL LEGEND**

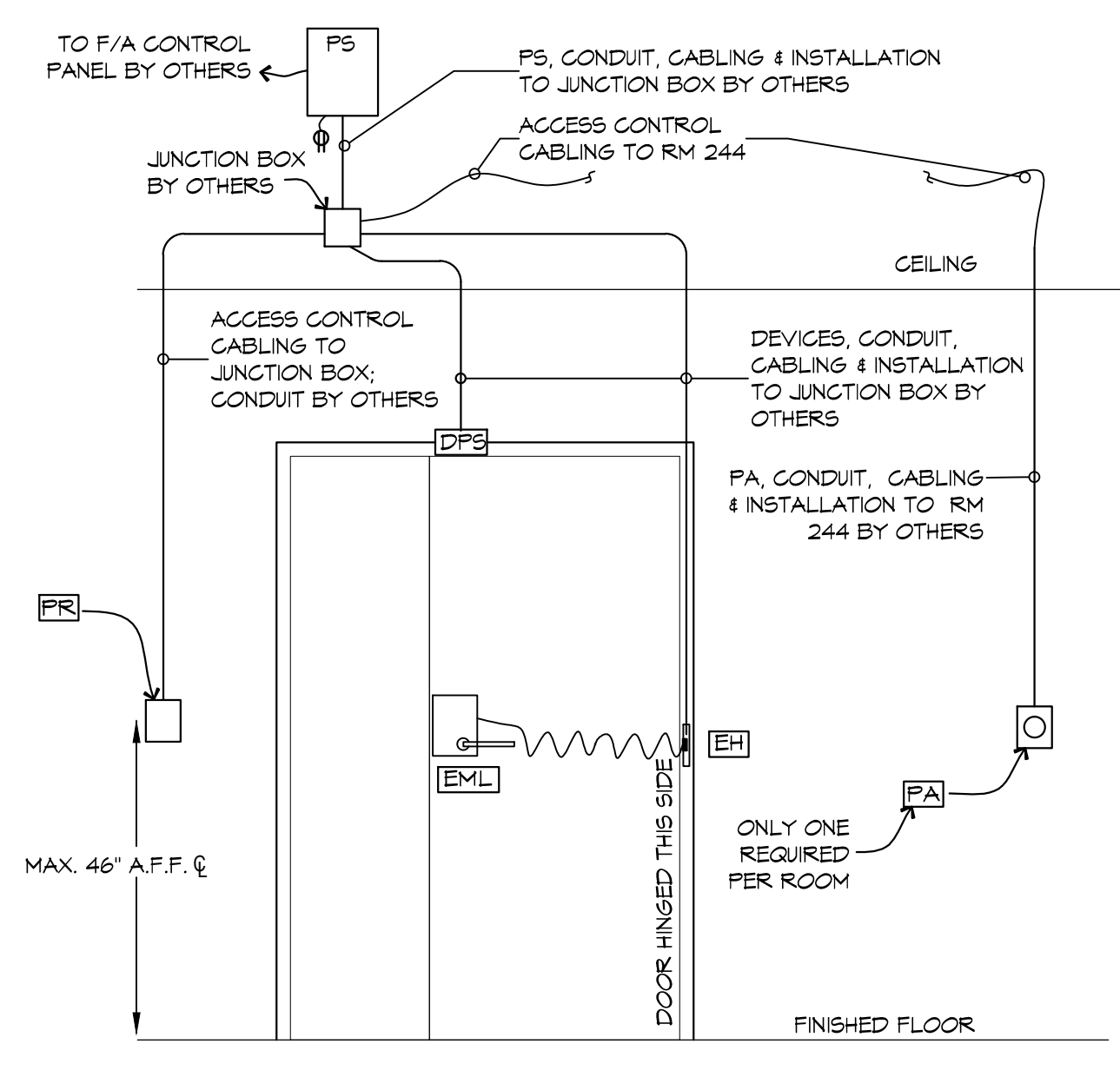
SYMBOL	DESCRIPTION	MOUNTING
(A)	DOOR DETAIL DESIGNATION	
(DPS)	DOOR POSITION SWITCH (SUPPLIED & INSTALLED BY OTHERS)	BY OTHERS
(EH)	ELECTRIC POWER TRANSFER HINGE (SUPPLIED & INSTALLED BY OTHERS)	BY OTHERS
(EL)	RIM EXIT DEVICE WITH ELECTRIC LATCH RETRACTOR (SUPPLIED & INSTALLED BY OTHERS)	BY OTHERS
(EML)	ELECTRIFIED MORTISE LOCK (SUPPLIED & INSTALLED BY OTHERS)	BY OTHERS
(ES)	ELECTRIC STRIKE (SUPPLIED & INSTALLED BY OTHERS)	BY OTHERS
(MPE)	MORTISE EXIT DEVICE WITH ELECTRIC LATCH RETRACTOR (SUPPLIED & INSTALLED BY OTHERS)	BY OTHERS
(MS)	MOTION SENSOR (SUPPLIED & INSTALLED BY OTHERS)	BY OTHERS
(PA)	PUSH BUTTON EMERGENCY LOCK NEAR PODIUM OR IN ADJACENT SPACE (SUPPLIED & INSTALLED BY OTHERS)	BY OTHERS
(PB)	ADA PUSH BUTTON (SUPPLIED & INSTALLED BY OTHERS)	BY OTHERS
(PD)	AUTO DOOR OPERATOR (SUPPLIED & INSTALLED BY OTHERS)	BY OTHERS
(PR)	HID ICLASS 922 PROXIMITY READER	WALL MAX 46" A.F.F. TO 1 U.O.N.
(PS)	POWER SUPPLY (SUPPLIED & INSTALLED BY OTHERS)	BY OTHERS



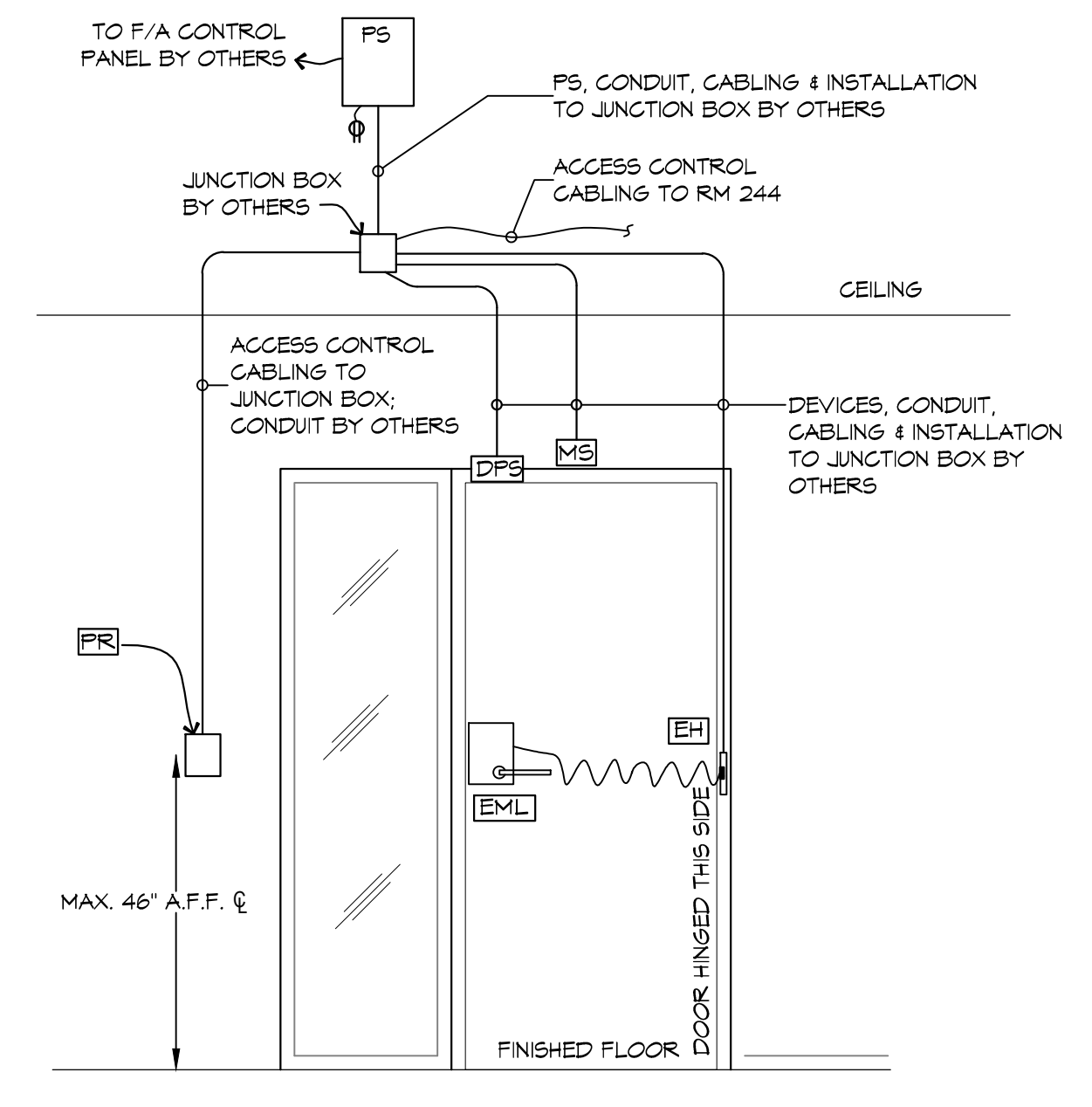
**(D) TYPICAL DOORS: 133, 139, 140A, 140B, 143A, 143B, 144A, 144B, 150A, 150B, 230, 243, 245 & 335**  
 (DOOR HARDWARE SET #15)



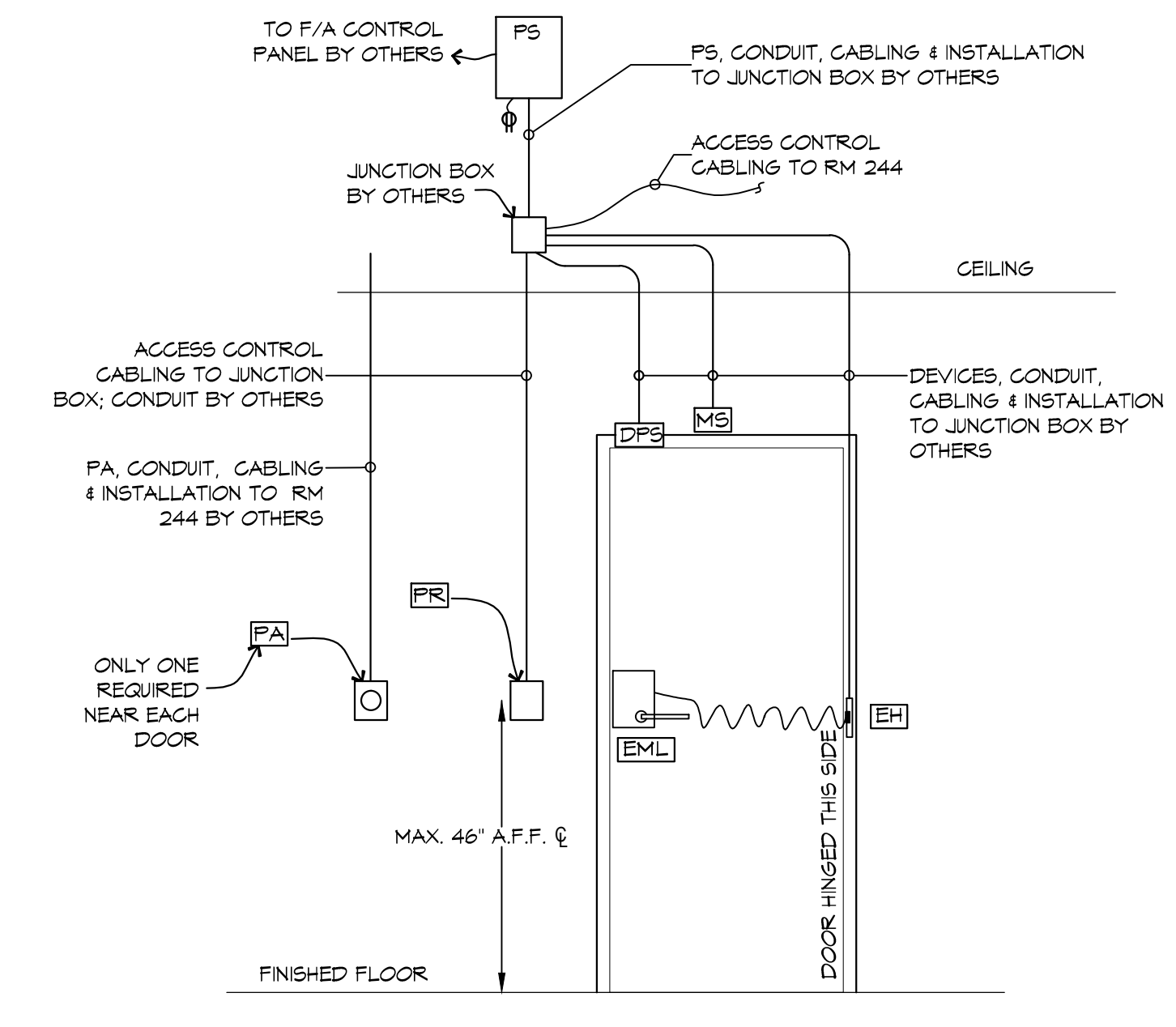
**(E) TYPICAL DOORS: 115, 214, 216, 268A, 324 & 362**  
 (DOOR HARDWARE SET #21)



**(F) TYPICAL DOORS: 336A, 343, 346A & 348A**  
 (DOOR HARDWARE SET #22)



**(H) TYPICAL DOORS: 108A, 129, 239, 269A, 269B & 334**  
 (DOOR HARDWARE SET #24)



**(I) TYPICAL DOORS: 330**  
 (DOOR HARDWARE SET #30)

Preliminary



IDN-Acme Incorporated  
 1504 Justin Rd Metairie, LA  
 70001-5085

UNIVERSITY OF SOUTHERN MISSISSIPPI  
**GREEN ACCESS CONTROL SYSTEMS**  
 HATTESBERG, MS  
 JOB NO: 22-45 DATE: 7/15/2019  
 DRAWN BY: [ ] CHECKED BY: [ ]

SHEET TITLE:  
**3RD FLOOR ACCESS CONTROL PLAN**

DRAWING NUMBER:

**SEC-3**