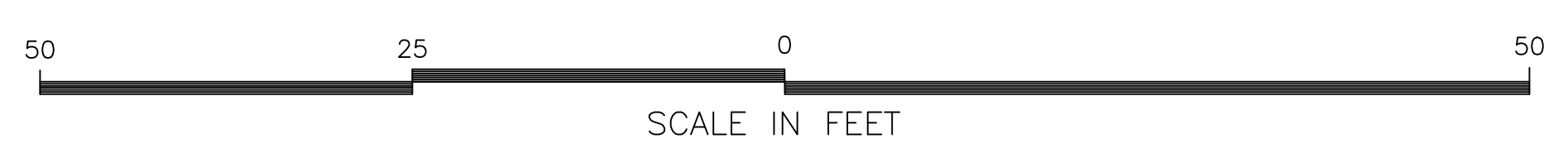
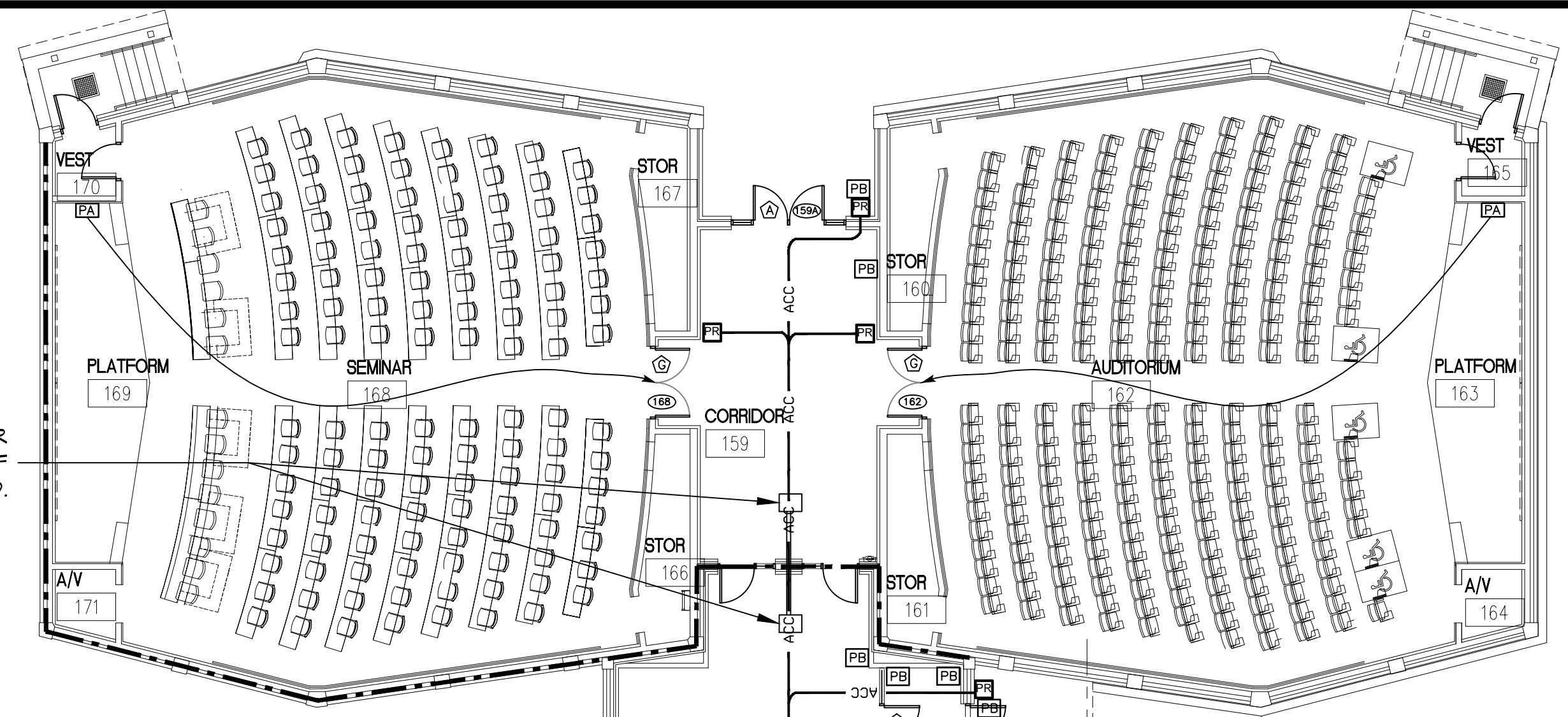


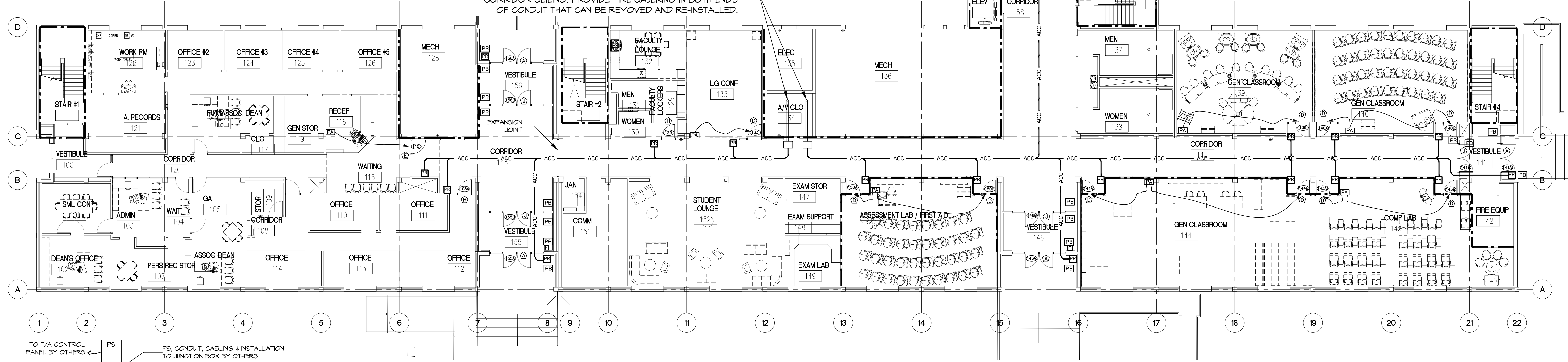
ACCESS CONTROL SYMBOL LEGEND

- PR = HID READER
- PB = HANDICAP PUSH BUTTON, BY OTHERS.
- PA = PUSH BUTTON TO LOCK DOORS, BY OTHERS.
- ← = ARROW INDICATES DOOR(S) THAT PUSH BUTTON LOCKS DOWN
- 214 = DOOR NUMBER
- E = HID READER
- ACC = ACCESS CONTROL CABLING
- - - = 1 HR FIRE RATED WALL
- - - - - = 2 HR FIRE RATED WALL

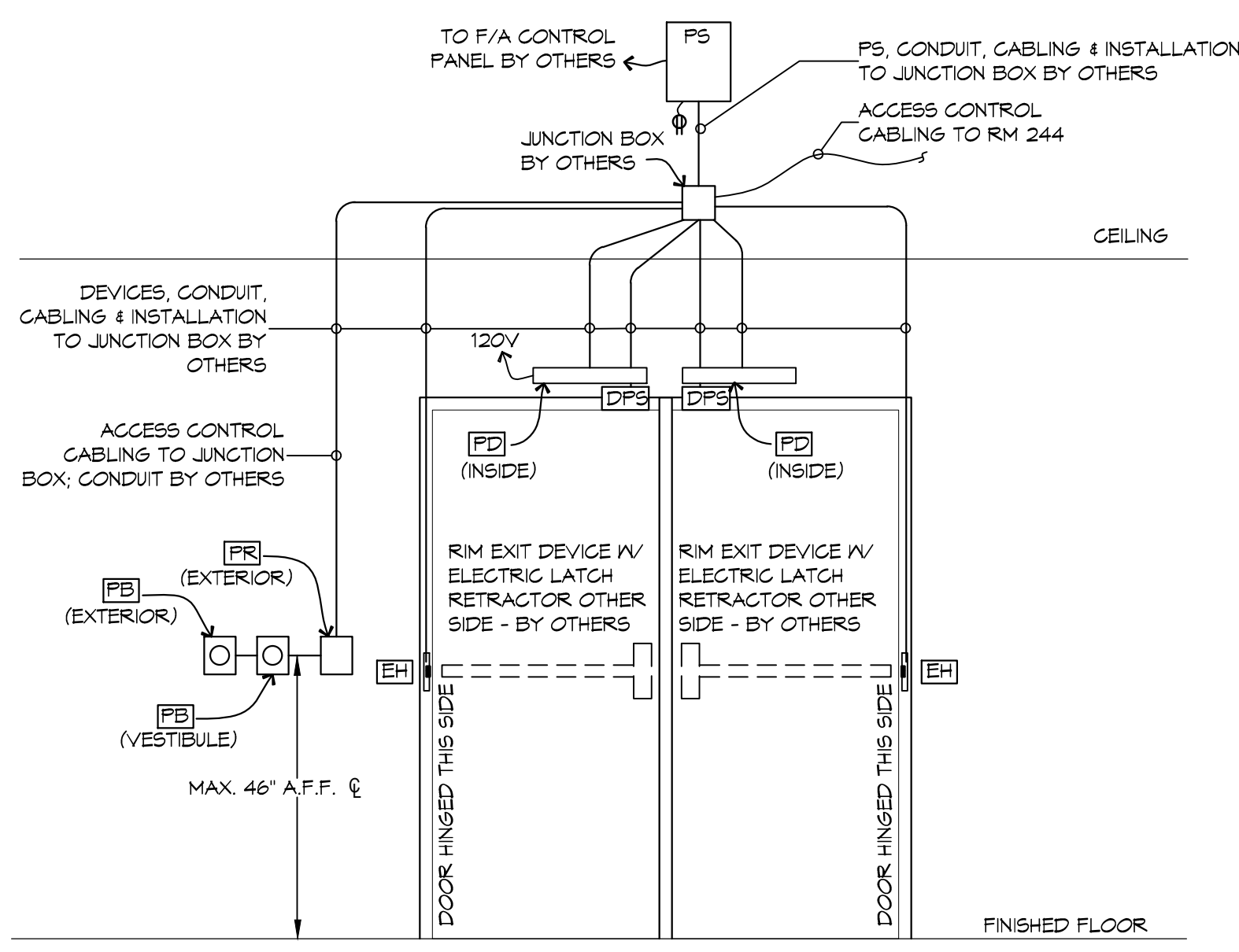


CONDUIT WITH JUNCTION BOX BOTH ENDS IN CORRIDOR CEILING. PROVIDE FIRE CAULKING IN BOTH ENDS OF CONDUIT THAT CAN BE REMOVED AND RE-INSTALLED.

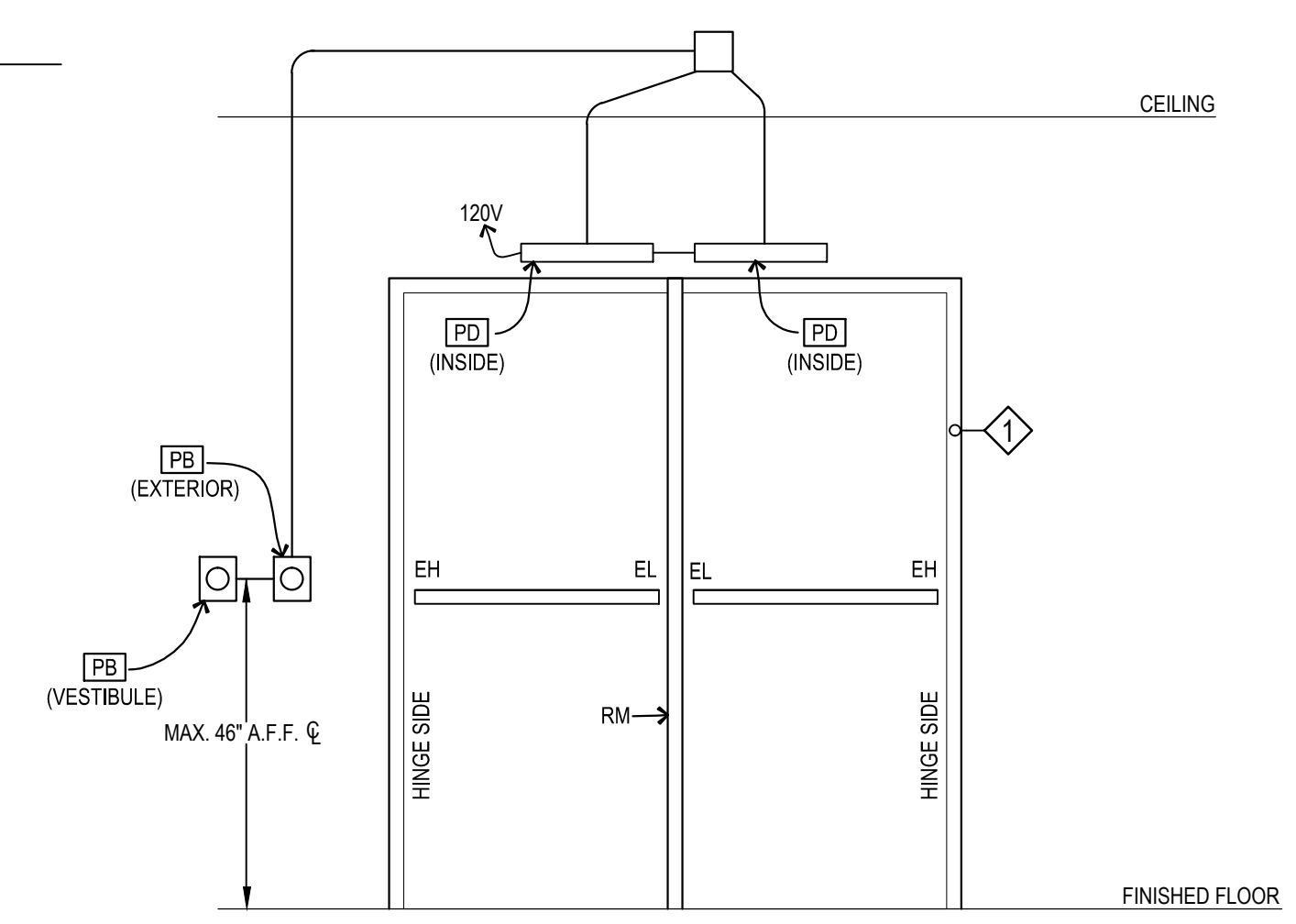
2EA - 4" PVC CONDUITS FROM RM 244 TO CORRIDOR CEILING ON 1ST FLOOR. TERMINATE CONDUIT WITH JUNCTION BOX IN CORRIDOR CEILING. PROVIDE FIRE CAULKING IN BOTH ENDS OF CONDUIT THAT CAN BE REMOVED AND RE-INSTALLED.



1 1st FLOOR
 SCALE: 3/32" = 1'-0"



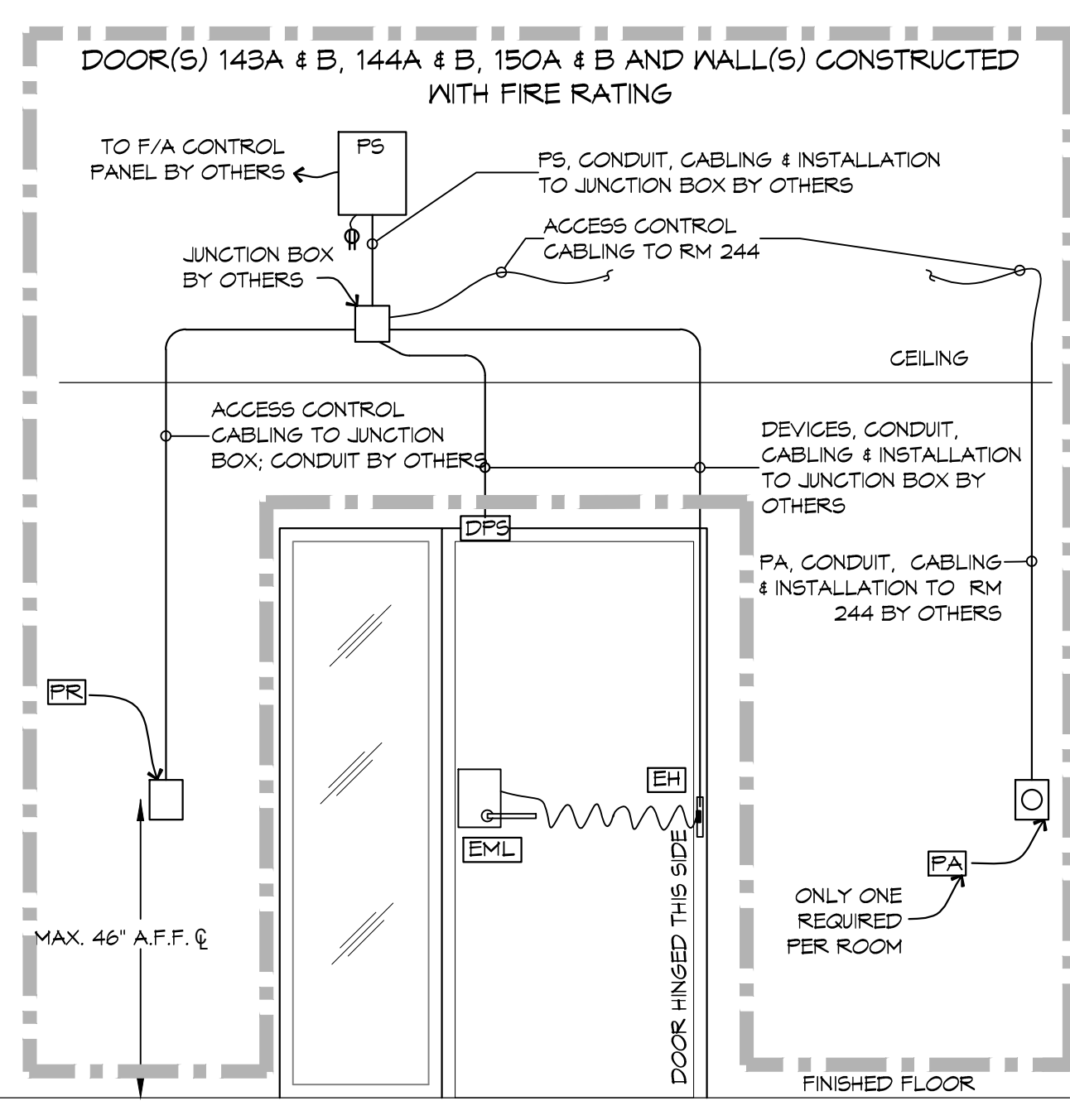
TYPICAL DOORS: 141A, 146A, 155A, 156A, 157A & 159A
 (DOOR HARDWARE SET #1)



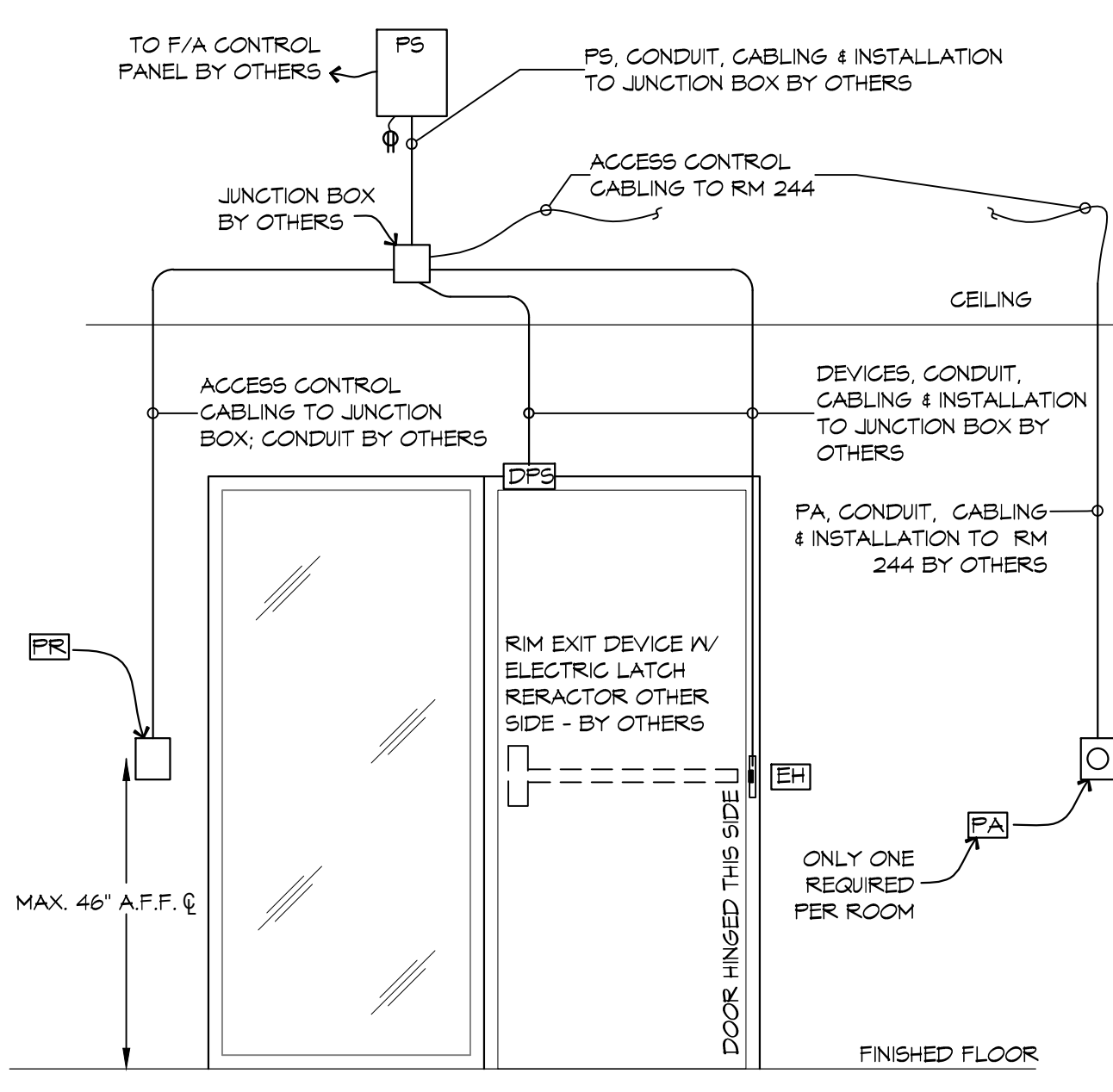
TYPICAL DOORS: 141B, 146B, 155B, 156B, 157B & 159B
 (DOOR HARDWARE SET #2
 NO ACCESS CONTROL THESE DOORS)

DOOR ACCESS CONTROL LEGEND

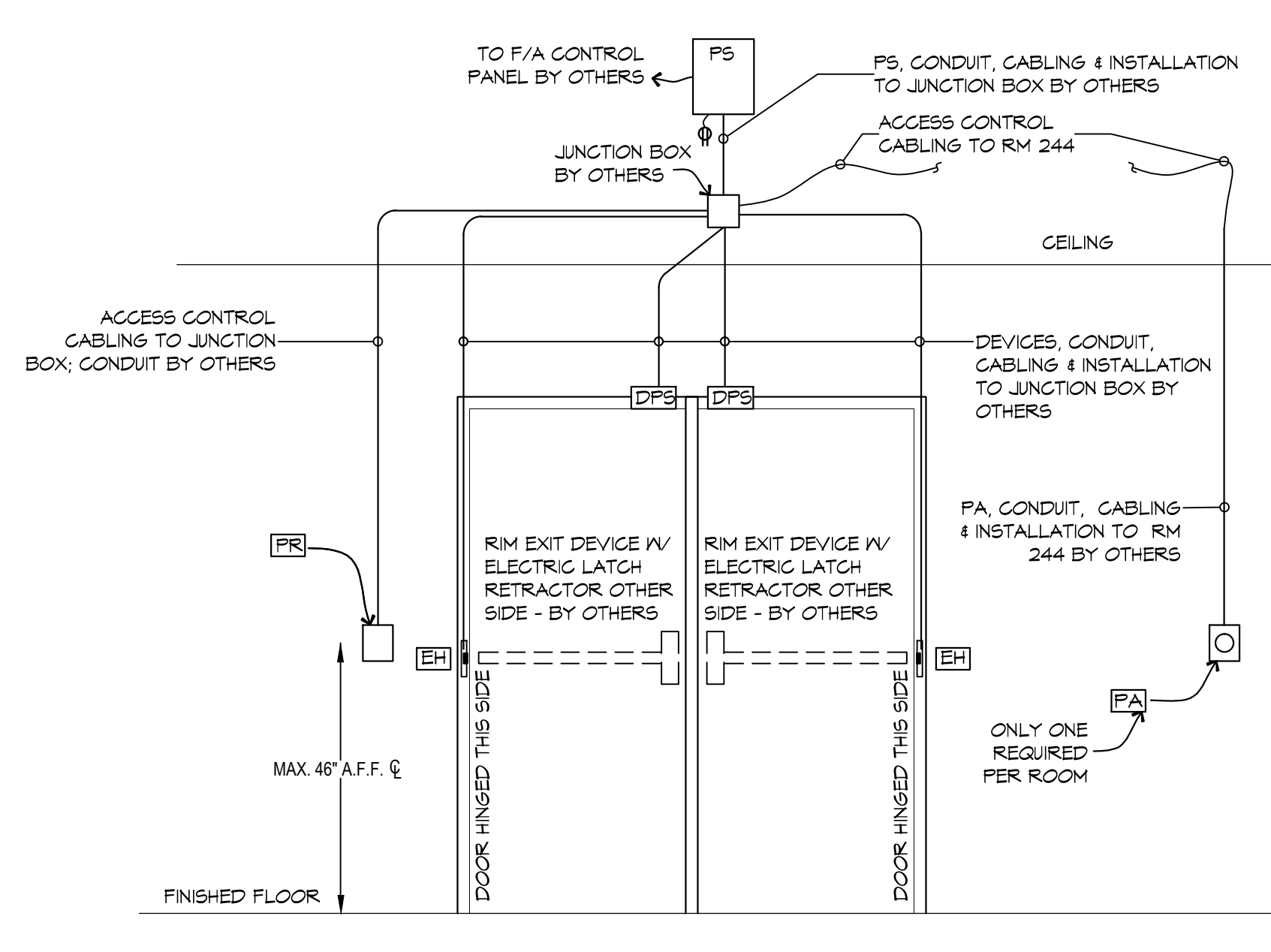
SYMBOL	DESCRIPTION	MOUNTING
△	DOOR DETAIL DESIGNATION	
DPS	DOOR POSITION SWITCH (SUPPLIED & INSTALLED BY OTHERS)	BY OTHERS
EH	ELECTRIC POWER TRANSFER HINGE (SUPPLIED & INSTALLED BY OTHERS)	BY OTHERS
EL	RIM EXIT DEVICE WITH ELECTRIC LATCH RETRACTOR (SUPPLIED & INSTALLED BY OTHERS)	BY OTHERS
EML	ELECTRIFIED MORTISE LOCK (SUPPLIED & INSTALLED BY OTHERS)	BY OTHERS
ES	ELECTRIC STRIKE (SUPPLIED & INSTALLED BY OTHERS)	BY OTHERS
MS	MORTISE EXIT DEVICE WITH ELECTRIC LATCH RETRACTOR (SUPPLIED & INSTALLED BY OTHERS)	BY OTHERS
MS	MOTION SENSOR (SUPPLIED & INSTALLED BY OTHERS)	BY OTHERS
PE	PUSH BUTTON EMERGENCY LOCK NEAR PODIUM OR IN ADJACENT SPACE (SUPPLIED & INSTALLED BY OTHERS)	BY OTHERS
PB	ADA PUSH BUTTON (SUPPLIED & INSTALLED BY OTHERS)	BY OTHERS
PD	AUTO DOOR OPERATOR (SUPPLIED & INSTALLED BY OTHERS)	BY OTHERS
PR	HID ICLASS 922 PROXIMITY READER	WALL MAX. 46" A.F.F. TO U.G.N.
PS	POWER SUPPLY (SUPPLIED & INSTALLED BY OTHERS)	BY OTHERS



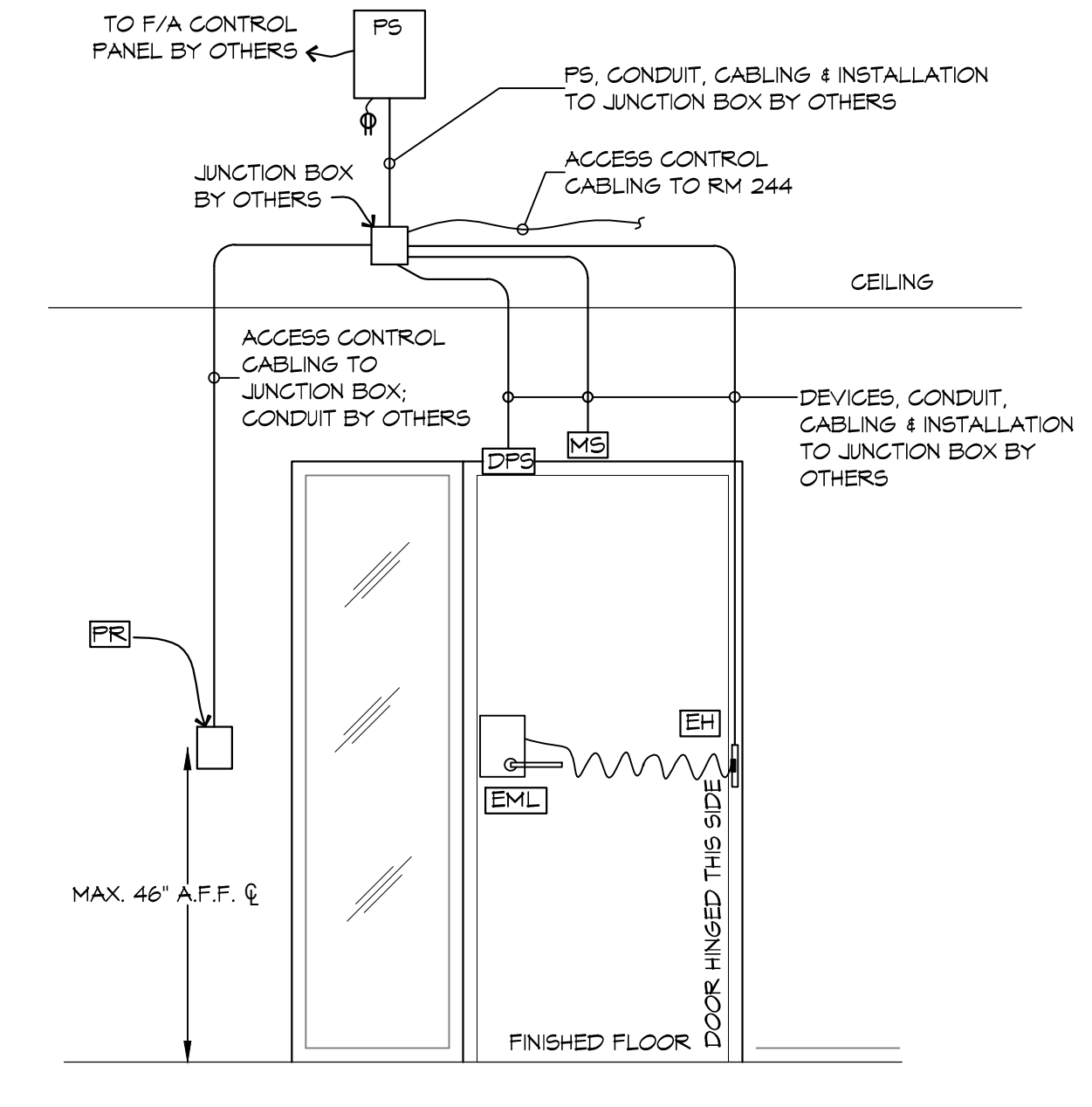
TYPICAL DOORS: 133, 134, 140A, 140B, 143A, 143B, 144A, 144B, 150A, 150B, 238, 243, 245 & 335
 (DOOR HARDWARE SET #1B)



TYPICAL DOORS: 115, 214, 216, 268A, 324 & 362
 (DOOR HARDWARE SET #21)



TYPICAL DOORS: 162 & 168
 (DOOR HARDWARE SET #23)



TYPICAL DOORS: 108A, 124, 234, 264A, 269B & 334
 (DOOR HARDWARE SET #29)

REVISIONS

DATE	DESCRIPTION

SCALE

IDN
 INTERNATIONAL DISTRIBUTION NETWORK
 ACME, INC.
 IDN-Acme Incorporated
 1504 Jostini Rd Metairie, LA
 70001-5985

UNIVERSITY OF SOUTHERN MISSISSIPPI
ACCESS CONTROL SYSTEMS

DATE: 7/15/2018
 DRAWN BY: RM
 CHECKED BY: CJD
 MATTHEWSBURG, MS

SHEET TITLE:
1ST FLOOR ACCESS CONTROL PLAN

DRAWING NUMBER:
SEC-1

SHEET No: 1 of 3