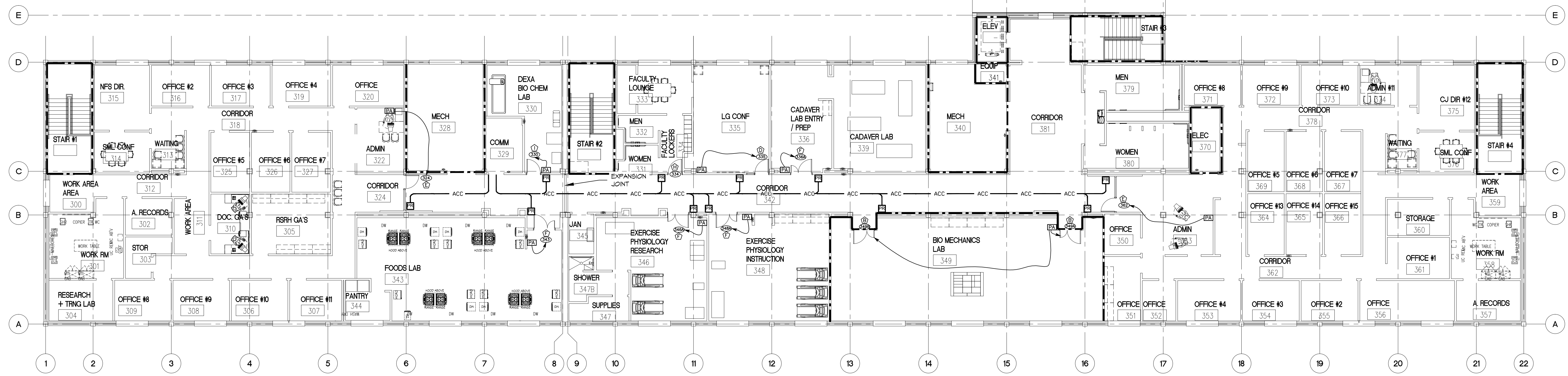


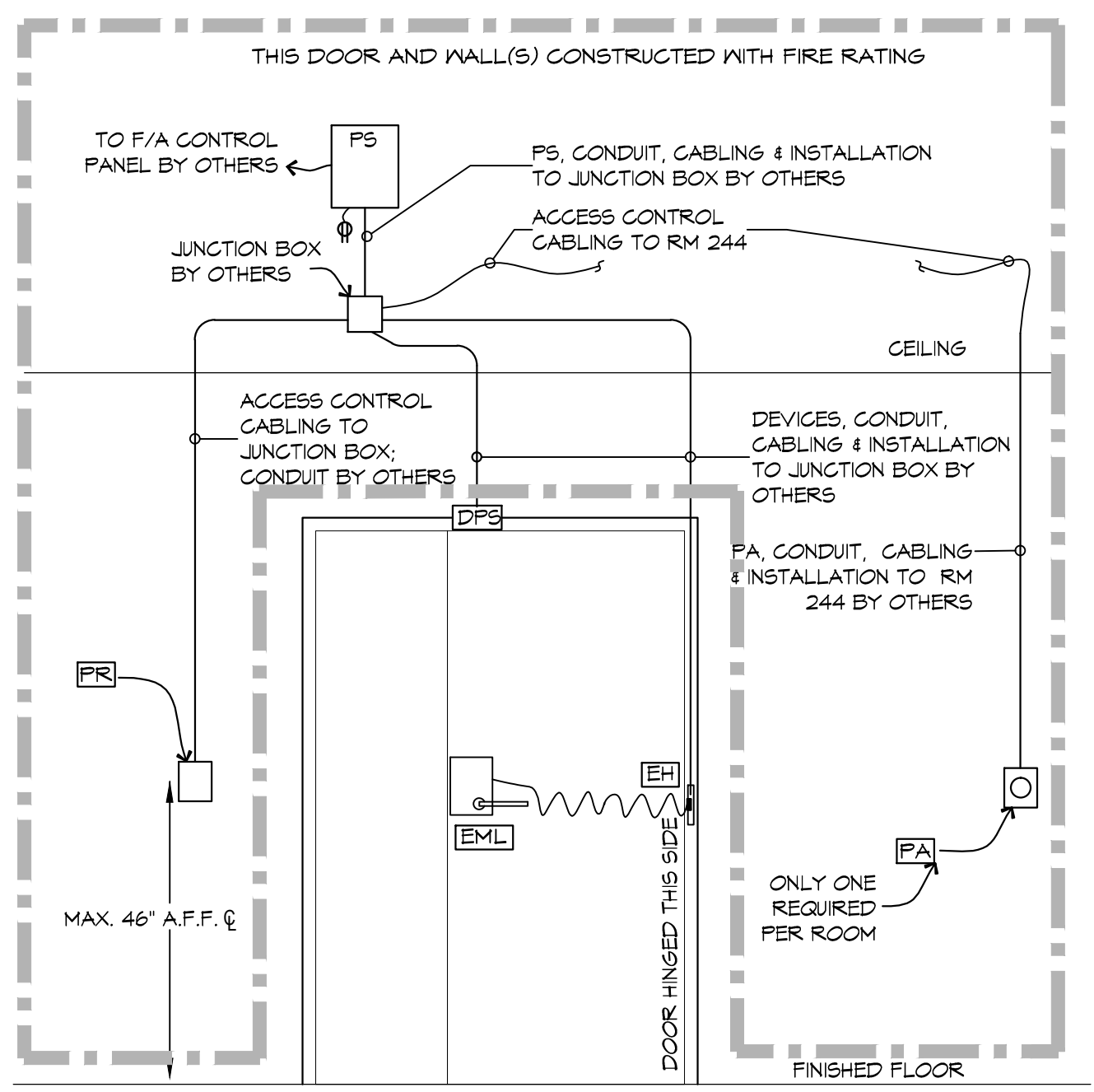
PLT: MDC - 03/08/2014; DAMMON ENGINEERING, INC. - 03/08/2014; DAMMON ENGINEERING, INC. - 03/08/2014; DAMMON ENGINEERING, INC. - 03/08/2014

ACCESS CONTROL SYMBOL LEGEND

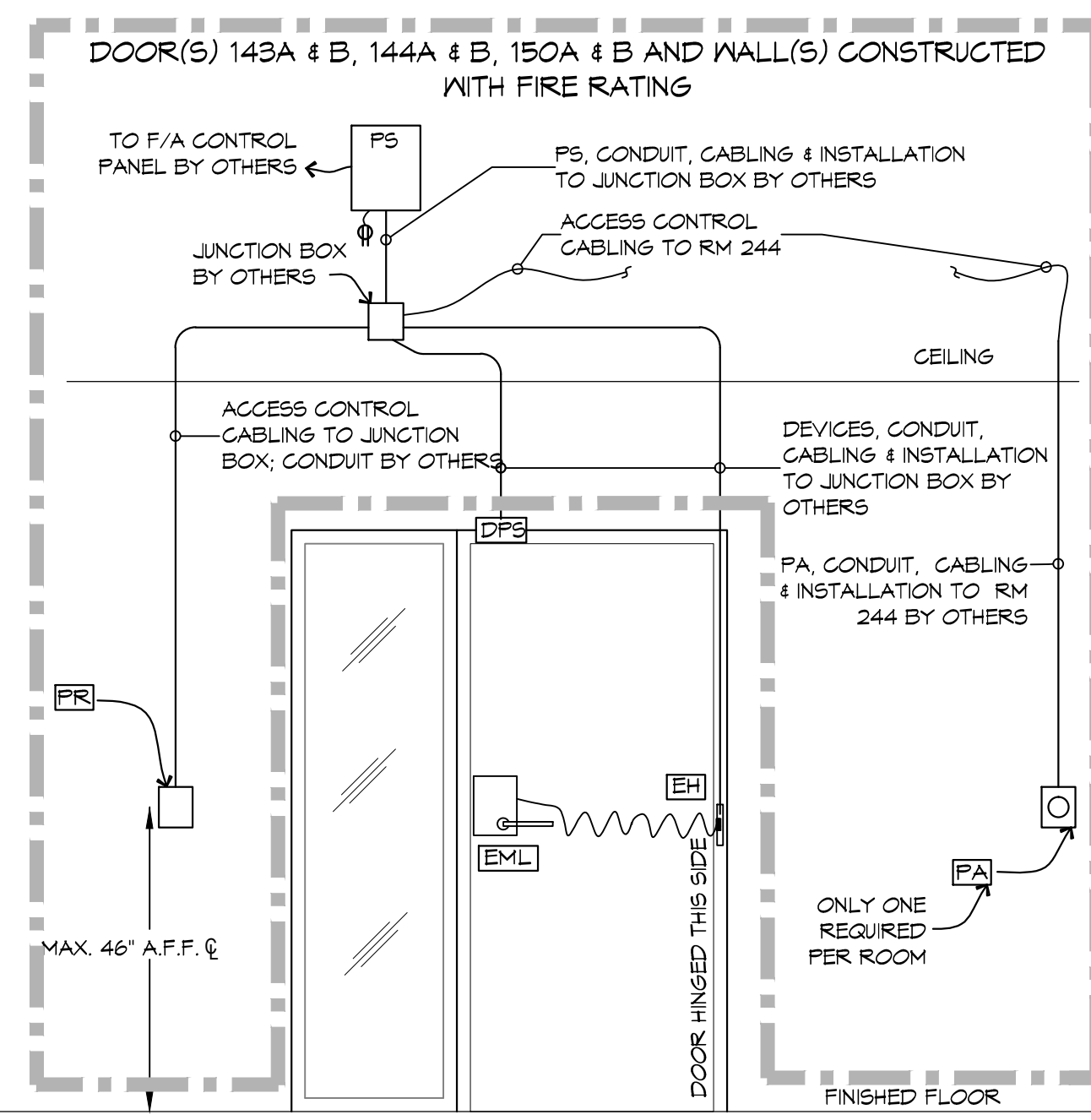
| | |
|---------|---|
| PR | = HID READER |
| PB | = HANDICAP PUSH BUTTON, BY OTHERS. |
| PA | = PUSH BUTTON TO LOCK DOORS, BY OTHERS. |
| (Arrow) | = ARROW INDICATES DOOR(S) THAT PUSH BUTTON LOCKS DOWN |
| 214 | = DOOR NUMBER |
| EH | = HID READER |
| ACC | = ACCESS CONTROL CABLING |
| --- | = 1 HR FIRE RATED MALL |
| --- | = 2 HR FIRE RATED MALL |



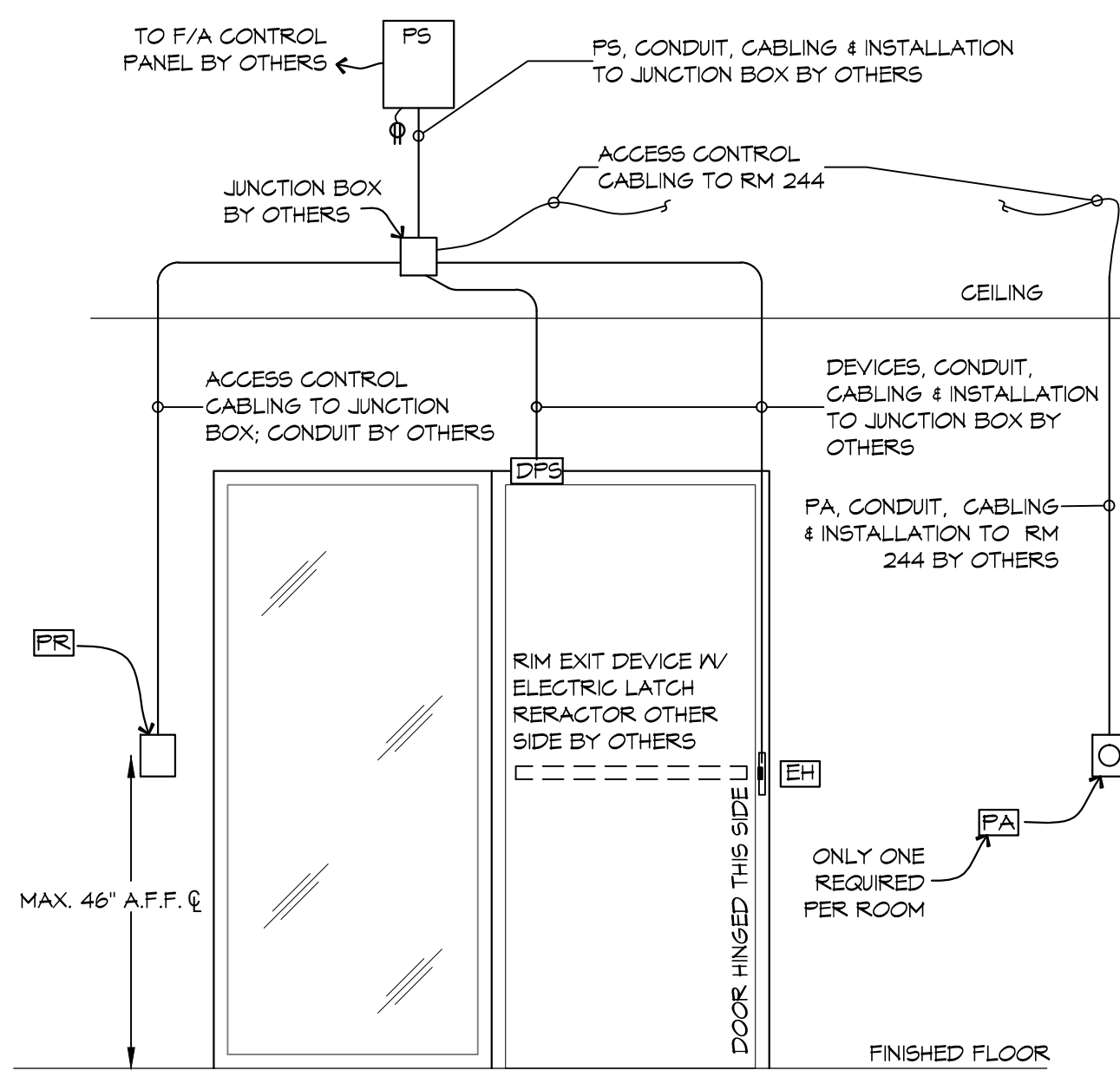
1 3rd FLOOR
SCALE: 3/32" = 1'-0"



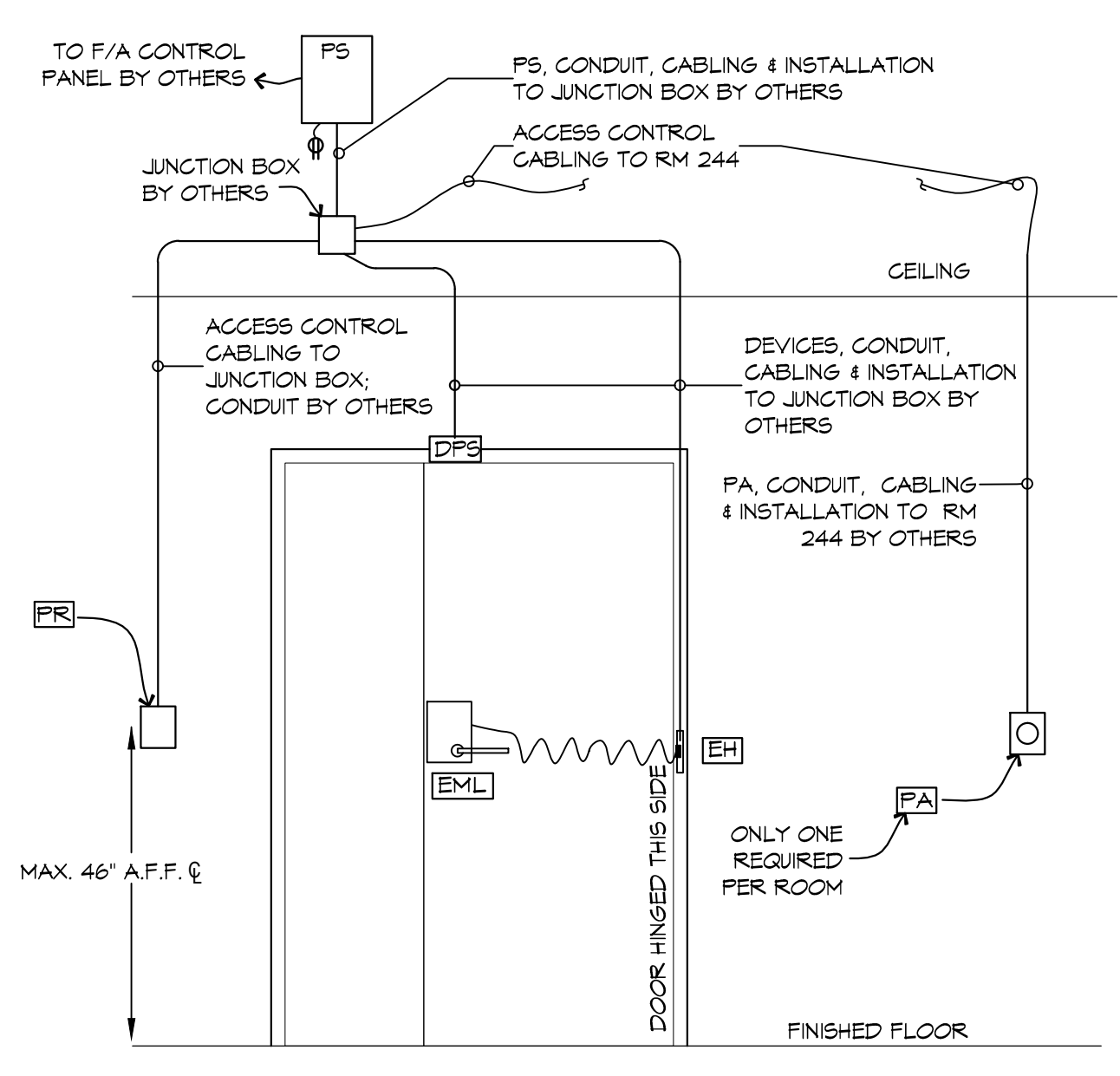
(B) TYPICAL DOORS: 349A & 349B
(DOOR HARDWARE SET #1)



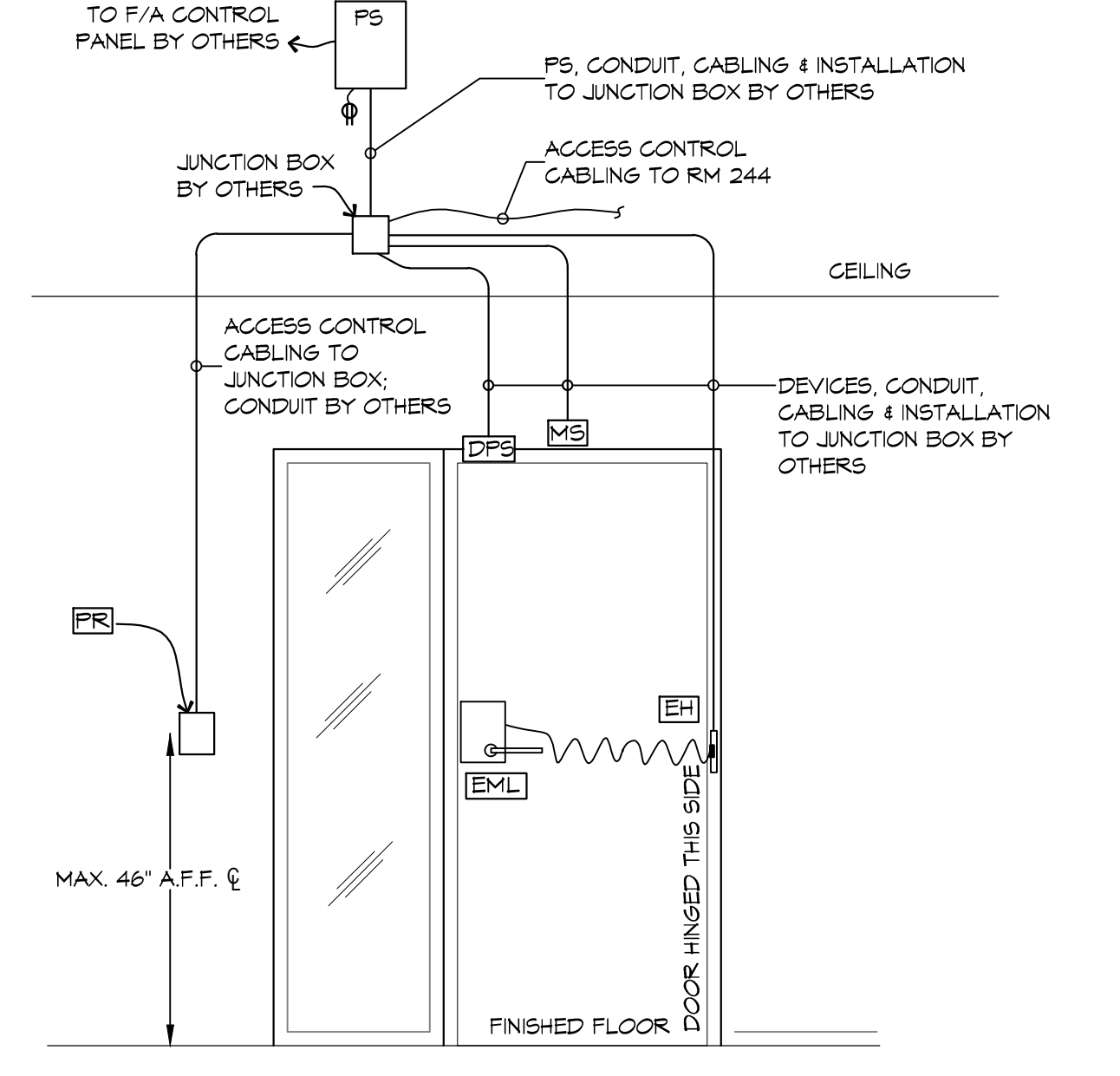
(D) TYPICAL DOORS: 133, 134, 140A, 140B, 143A, 143B, 144A, 144B, 150A, 150B, 230, 243, 245 & 335
(DOOR HARDWARE SET #15)



(E) TYPICAL DOORS: 115, 214, 216, 268A, 324 & 362
(DOOR HARDWARE SET #21)



(F) TYPICAL DOORS: 336A, 343, 346A & 348A
(DOOR HARDWARE SET #22)



(H) TYPICAL DOORS: 108A, 129, 239, 269A, 269B & 334
(DOOR HARDWARE SET #24)

DOOR ACCESS CONTROL LEGEND

| SYMBOL | DESCRIPTION | MOUNTING |
|--------|--|----------------------------------|
| (A) | DOOR DETAIL DESIGNATION | |
| (DPS) | DOOR POSITION SWITCH (SUPPLIED & INSTALLED BY OTHERS) | BY OTHERS |
| (EH) | ELECTRIFIED POWER TRANSFER HINGE (SUPPLIED & INSTALLED BY OTHERS) | BY OTHERS |
| (EL) | RIM EXIT DEVICE WITH ELECTRIC LATCH RETRACTOR (SUPPLIED & INSTALLED BY OTHERS) | BY OTHERS |
| (EM) | ELECTRIFIED MORTISE LOCK (SUPPLIED & INSTALLED BY OTHERS) | BY OTHERS |
| (ES) | ELECTRIC STRIKE (SUPPLIED & INSTALLED BY OTHERS) | BY OTHERS |
| (EP) | MORTISE EXIT DEVICE WITH ELECTRIC LATCH RETRACTOR (SUPPLIED & INSTALLED BY OTHERS) | BY OTHERS |
| (MS) | MOTION SENSOR (SUPPLIED & INSTALLED BY OTHERS) | BY OTHERS |
| (PA) | PUSH BUTTON EMERGENCY LOCK NEAR PODIUM OR IN ADJACENT SPACE (SUPPLIED & INSTALLED BY OTHERS) | BY OTHERS |
| (PB) | ADA PUSH BUTTON (SUPPLIED & INSTALLED BY OTHERS) | BY OTHERS |
| (PD) | AUTO DOOR OPERATOR (SUPPLIED & INSTALLED BY OTHERS) | BY OTHERS |
| (PR) | HID CLASS 922 PROXIMITY READER | MALL MAX. 46" A.F.F. TO 1 U.G.N. |
| (PS) | POWER SUPPLY (SUPPLIED & INSTALLED BY OTHERS) | BY OTHERS |



IDI-ACME Incorporated
1504 Justin Rd Metairie, LA
70001-5925

UNIVERSITY OF SOUTHERN MISSISSIPPI
SECURE ACCESS CONTROL SYSTEMS

SHEET TITLE:
3RD FLOOR ACCESS CONTROL PLAN

DRAWING NUMBER:

SEC-

SHEET No. 1