

SYSTEMS COORDINATION SCHEDULE

SYSTEM	DEVICE TYPE	SYSTEM FURNISHED BY	SYSTEM INSTALLED BY	ROUGH-IN PROVIDED BY	BOX SIZE	BOX DEPTH	WIRING BETWEEN DEVICES BY	FULL CONDUIT	CONDUIT STUB	REMARKS
DOOR ACCESS CONTROL	ELECTRIFIED HINGE	DOOR HARDWARE VENDOR	DOOR HARDWARE VENDOR	ELECTRICAL CONT	NOTE #5	NOTE #5	NOTE #4	X		ELECT CONTR PROVIDES ROUGH-IN ONLY - SEE NOTE #7
DOOR ACCESS CONTROL	DOOR POSITION SWITCH	OWNER	OWNER	ELECTRICAL CONT	NOTE #5	NOTE #5	NOTE #4	X		ELECT CONTR PROVIDES ROUGH-IN ONLY
DOOR ACCESS CONTROL	CARD READER	OWNER	OWNER	ELECTRICAL CONT	NOTE #5	NOTE #5	NOTE #4	X		ELECT CONTR PROVIDES ROUGH-IN ONLY
DOOR ACCESS CONTROL	DOOR RELEASE	OWNER	OWNER	ELECTRICAL CONT	NOTE #5	NOTE #5	NOTE #4	X		ELECT CONTR PROVIDES ROUGH-IN ONLY
DOOR ACCESS CONTROL	PUSH BUTTON	OWNER	OWNER	ELECTRICAL CONT	NOTE #5	NOTE #5	NOTE #4	X		ELECT CONTR PROVIDES ROUGH-IN ONLY
DOOR ACCESS CONTROL	HEAD-END EQUIPMENT	OWNER	OWNER	ELECTRICAL CONT	NOTE #5	NOTE #5	NOTE #4	X		ELECT CONTR PROVIDES ROUGH-IN ONLY
DOOR ACCESS CONTROL	DOOR POSITION SWITCH	OWNER	OWNER	ELECTRICAL CONT	NOTE #5	NOTE #5	NOTE #4	X		ELECT CONTR PROVIDES ROUGH-IN ONLY
DOOR ACCESS CONTROL	UPS SYSTEM	OWNER	OWNER	ELECTRICAL CONT	NOTE #5	NOTE #5	NOTE #4	X		ELECT CONTR PROVIDES ROUGH-IN ONLY
OCTV	UPS SYSTEM	OWNER / ITECH	OWNER / ITS	ELECTRICAL CONT	NOTE #5	NOTE #5	N/A			ELECT CONTR PROVIDES ROUGH-IN ONLY
OCTV	FIXED CAMERA (ALL TYPES)	OWNER / ITECH	OWNER / ITS	ELECTRICAL CONT	NOTE #5	NOTE #5	OWNER / ITS	X		ELECT CONTR PROVIDES ROUGH-IN ONLY
OCTV	HEAD-END EQUIPMENT	OWNER / ITECH	OWNER / ITS	ELECTRICAL CONT	NOTE #5	NOTE #5	OWNER / ITS	X		ELECT CONTR PROVIDES ROUGH-IN ONLY
FIRE ALARM	PULL STATION	ELECTRICAL CONT	ELECTRICAL CONT	ELECTRICAL CONT	NOTE #3	NOTE #3	ELECTRICAL CONT	X		ELECT CONTR PROVIDES COMPLETE SYSTEM
FIRE ALARM	A/V DEVICE (HORN - LIGHT)	ELECTRICAL CONT	ELECTRICAL CONT	ELECTRICAL CONT	NOTE #3	NOTE #3	ELECTRICAL CONT	X		ELECT CONTR PROVIDES COMPLETE SYSTEM
FIRE ALARM	FLASHING LIGHT ONLY	ELECTRICAL CONT	ELECTRICAL CONT	ELECTRICAL CONT	NOTE #3	NOTE #3	ELECTRICAL CONT	X		ELECT CONTR PROVIDES COMPLETE SYSTEM
FIRE ALARM	HEAT DETECTOR	ELECTRICAL CONT	ELECTRICAL CONT	ELECTRICAL CONT	NOTE #3	NOTE #3	ELECTRICAL CONT	X		ELECT CONTR PROVIDES COMPLETE SYSTEM
FIRE ALARM	SMOKE DETECTOR - CEILING	ELECTRICAL CONT	ELECTRICAL CONT	ELECTRICAL CONT	NOTE #3	NOTE #3	ELECTRICAL CONT	X		ELECT CONTR PROVIDES COMPLETE SYSTEM
FIRE ALARM	SMOKE DETECTOR - DUCT	ELECTRICAL CONT	ELECTRICAL CONT	ELECTRICAL CONT	NOTE #3	NOTE #3	ELECTRICAL CONT	X		ELECT CONTR PROVIDES COMPLETE SYSTEM
FIRE ALARM	TAMPER SWITCH	ELECTRICAL CONT	ELECTRICAL CONT	ELECTRICAL CONT	NOTE #3	NOTE #3	ELECTRICAL CONT	X		ELECT CONTR PROVIDES COMPLETE SYSTEM
FIRE ALARM	FLOW SWITCH	ELECTRICAL CONT	ELECTRICAL CONT	ELECTRICAL CONT	NOTE #3	NOTE #3	ELECTRICAL CONT	X		ELECT CONTR PROVIDES COMPLETE SYSTEM
FIRE ALARM	PIV (POST INDICATOR VALVE)	ELECTRICAL CONT	ELECTRICAL CONT	ELECTRICAL CONT	NOTE #3	NOTE #3	ELECTRICAL CONT	X		ELECT CONTR PROVIDES COMPLETE SYSTEM
FIRE ALARM	HEAD-END EQUIPMENT	ELECTRICAL CONT	ELECTRICAL CONT	ELECTRICAL CONT	NOTE #3	NOTE #3	ELECTRICAL CONT	X		ELECT CONTR PROVIDES COMPLETE SYSTEM
VOICE DATA	WORKSTATION OUTLETS	ITS	ITS	ELECTRICAL CONT	NOTE #1	NOTE #2	OWNER / ITS		X	ELECT CONTR PROVIDES ROUGH-IN ONLY
VOICE DATA	EMERGENCY PHONE	ELECTRICAL CONT	ELECTRICAL CONT	ELECTRICAL CONT	NOTE #5	NOTE #5	OWNER / ITS	X		ELECT CONTR PROVIDES COMPLETE SYSTEM (EXCLUDING WIRING)
VOICE DATA	FIBER DISTRIBUTION	ITS	ITS	ELECTRICAL CONT	NOTE #1	NOTE #2	OWNER / ITS	X		ELECT CONTR PROVIDES ROUGH-IN ONLY
VOICE DATA	RACKS & WIRE MGMT	ITS	ITS	ELECTRICAL CONT	N/A	N/A	OWNER / ITS	N/A	N/A	ELECT CONTR PROVIDES ROUGH-IN ONLY
VOICE DATA	UPS	ITS	ITS	ELECTRICAL CONT	N/A	N/A	OWNER / ITS	N/A	N/A	ELECT CONTR PROVIDES ROUGH-IN ONLY
VOICE DATA	WIRELESS	ITS	ITS	ELECTRICAL CONT	NOTE #1	NOTE #2	OWNER / ITS	X		ELECT CONTR PROVIDES ROUGH-IN ONLY
VOICE DATA	PATCH PANELS	ITS	ITS	ELECTRICAL CONT	NOTE #1	NOTE #2	OWNER / ITS	X		ELECT CONTR PROVIDES ROUGH-IN ONLY
VOICE DATA	PATCH CABLES	ITS	ITS	ELECTRICAL CONT	NOTE #1	NOTE #2	OWNER / ITS	X		ELECT CONTR PROVIDES ROUGH-IN ONLY
VOICE DATA	NETWORK SWITCHES	ITS	ITS	ELECTRICAL CONT	N/A	N/A	OWNER / ITS	X		ELECT CONTR PROVIDES ROUGH-IN ONLY
VOICE DATA	INSIDE & OUTSIDE CABLING	ITS	ITS	ELECTRICAL CONT	SEE NOTES	SEE NOTES	OWNER / ITS	X		ELECT CONTR PROVIDES ROUGH-IN ONLY
CATV	TELEVISION OUTLET	OWNER / ITS	OWNER / ITS	ELECTRICAL CONT	NOTE #1	NOTE #2	OWNER / ITS	X		ELECT CONTR PROVIDES ROUGH-IN ONLY
CATV	HEAD-END EQUIPMENT	OWNER / ITS	OWNER / ITS	ELECTRICAL CONT	N/A	N/A	OWNER / ITS	X		ELECT CONTR PROVIDES ROUGH-IN ONLY
A/V	SPEAKERS	OWNER / ITECH/ITS	ITS	ELECTRICAL CONT	NOTE #5	NOTE #5	OWNER / ITS	X		ELECT CONTR PROVIDES ROUGH-IN ONLY
A/V	MICROPHONES	OWNER / ITECH/ITS	ITS	ELECTRICAL CONT	NOTE #5	NOTE #5	OWNER / ITS	X		ELECT CONTR PROVIDES ROUGH-IN ONLY

- NOTES:
- 5 SQUARE BACKBOX (RANDL. IND. T-55017) WITH SINGLE GANG PLASTER RING
 - 2.875" DEEP
 - REFER TO SPECS SECTION 283111 FOR VENDOR REQUIREMENTS FOR EACH DEVICE TYPE.
 - CABLING PROVIDED AND INSTALLED BY USM VENDOR
 - COORDINATE EXACT SIZE WITH VENDOR.
 - CABLING PROVIDED AND INSTALLED BY CONTRACTOR.
 - SEE DETAILS ON SHEET ED.02.
 - ALL CONDUIT STUBS SHALL BE TAKEN BACK TO ABOVE ACCESSIBLE CEILINGS.

LIGHT FIXTURE SCHEDULE

MARK	MFG.	MOD. NO.	LAMP	MOUNTING	VOLTAGE	REMARKS
1	CREE	CR2440L36K10V	LED	LAY-IN	120V	2X4 LED LAYIN
2	CREE	CR2422L36K10V	LED	LAY-IN	120V	2X4 LED LAYIN
3	CREE	KR613L36K120V10V	LED	RECESSED	120V	DIMMABLE 6" LED DOWN LIGHT
4	DUAL LITE	SESRWEI	LED	SURFACE	120V	SINGLE FACE EXIT SIGN WITH SELF TESTING
5	DUAL/LITE	SEMSRWEI-DC SRHS (COLOR BY ARCHITECT)	LED	-	120V	SINGLE FACE LED EXIT FIXTURE NICKEL-CADMIUM BATTERY AND REMOTE HEAD
6	DUAL/LITE	LZ161	-	WALL	120V	TWO HEAD FIXTURE WITH SELF DIAGNOSTICS WITH BATTERY BACKUP
7	CREE	WS447L36K-10VFDSSL	LED	WALL	120V	LED VAPOR TIGHT WALL FIXTURE
8	KENALL	MLHA12SB48 67L36K E48R PP 1 DCC LELOV	LED	WALL	120V	4' LED STARWELL FIXTURE WITH NICA BATTERY BACKUP MTG HT. 7'-0" AFF
9	CREE	LS8 40L 36K 10V LS8-AR	LED	CHAIN	120V	4' LED STRIP WITH APERTURED REFLECTOR
10	DUAL LITE	SEDRWEI	LED	SURFACE	120V	DOUBLE FACE EXIT SIGN WITH SELF TESTING
11	CREE	CR2440L36K10V-DGA24	LED	LAY-IN	120V	2X4 LED LAYIN WITH FRAME FOR GYP BOARD CEILING
12	CREE	CR2222L36K10V-DGA22	LED	LAY-IN	120V	2X2 LED LAYIN WITH FRAME FOR GYP BOARD CEILING
13	CREE	CR2222L36K10V	LED	LAY-IN	120V	2X2 LED LAYIN
14	CREE	CR2422L36K10V-DGA24	LED	LAY-IN	120V	2X4 LED LAYIN WITH FRAME FOR GYP BOARD CEILING
15	KENALL (ALT #2)	CSEDO24 67L36K DCCDVSYM FN *	LED	LAY-IN	120V	2X4 LED LAYIN SEALED FOOD ZONE/ NON-CONTACT FOR FOOD PROCESSING APPLICATIONS
16	FINLITE (ALT #2)	HP-4 1D-48"-SO-HO-3600K-TG-	LED	PENDANT	120V	LINEAR LED PENDANT
17	AXIS (ALT #2)	WBRLB3MF-600-80-36S(4)1(8)1-UNV D1	LED	RECESSED	120V	RECESSED LINEAR LED
18	DELRAY (ALT #2)	KLP34-2W86D1 FINISH AND COLOR BY ARCHITECT	LED	PENDANT	120V	ARCHITECTURAL LED PENDANT
19	FC LIGHTING	FCW0060-120V-LED4K2400LD FINISH AND COLOR BY ARCHITECT	LED	SURFACE	120V	EXTERIOR LED SURFACE MOUNT DIRECTLY TO SURFACE
20	DLC	WL-311L30M/47 FINISH AND COLOR BY ARCHITECT	LED	WALL	120V	LED EXTERIOR WALL FIXTURE
21	RAYON	RULA-22-11-30K-XX-LC1 2B	LED	SURFACE	120V	22" LED UNDERCOUNTER FIXTURE WITH ROCKER SWITCH FOR ON/ OFF CONTROL
22	RAYON	RULA-48-19-30K-XX-LC1 2B	LED	SURFACE	120V	48" LED UNDERCOUNTER FIXTURE WITH ROCKER SWITCH FOR ON/ OFF CONTROL
23	WILLIAMS	LSL60-L40C/836-DPL-DIM-120	LED	RECESSED	120V	6" RECESSED SHOWER FIXTURE
A	TBD	SEE SHEET ED.08	-	16" POLE	UNV.	ACORN FIXTURE 16" POLE WITH CONCRETE BASE

NOTE: 1. PROVIDE COLOR / FINISH CHARTS TO ARCHITECT FOR REVIEW

ELECTRICAL LEGEND

SYMBOL	DESCRIPTION	MOUNTING HEIGHT	SYMBOL	DESCRIPTION	MOUNTING HEIGHT
POWER					
	CONDUIT CONCEALED	---		EXPOSED CONDUIT ON WALL OR CEILING	18" AFF
	HOMERUN CONDUIT	---		SURFACE OR RECESSED FIXTURE CONNECTED TO THE NORMAL BRANCH (FIXTURE TYPE TO DETERMINE MOUNTING)	46" AFF TO CL
	INDICATES LIGHTING FIXTURE ON EMERGENCY POWER WIRED THRU GENERATOR.	---		INTERACTIVE BOARD CONNECTION - SEE INTERACTIVE BOARD RACEWAY DETAIL	---
	EXIT LIGHT	---		INTERACTIVE BOARD TEACHER CONNECTION - SEE INTERACTIVE BOARD RACEWAY DETAIL	---
	LIGHTING FIXTURE DESIGNATION - SEE FIXTURE SCHED.	---		TELEVISION OUTLET - SINGLE GANG BOX WITH COND TO ABOVE ACCESSIBLE CEILING.	---
	SINGLE POLE SWITCH	46" AFF TO CL		MANUAL MOTOR STARTER	AT UNIT
	KEY SWITCH	---		FIRE ALARM MANUAL PULL STATION	46" AFF
	MOTOR	---		FUSED DISCONNECT SWITCH - AMPS/POLES/FUSE SIZE	10'-0" AFF TO CL
	NON-FUSED DISCONNECT SWITCH - AMPS/POLES/NF	---		FIRE ALARM ARENA AREA HORN/SPEAKER	---
	COMBINATION ACROSS-THE-LINE MOTOR STARTER	---		FIRE ALARM CHIME WITH LIGHT	7'-0" AFF TO CL
	120V. DUPLEX RECEPTACLE	1'-6" AFF TO CL		FIRE ALARM LIGHT ONLY	7'-0" AFF TO CL
	120V. DUPLEX RECEPTACLE - SPECIAL MOUNTING HEIGHT	ABOVE COUNTER SEE SPECS.		FIRE ALARM HEAT DETECTOR	CEILING MOUNTED
	120V. QUADPLEX RECEPTACLE	1'-6" AFF TO CL		FIRE ALARM SMOKE DETECTOR	CEILING MOUNTED
	120V. QUADPLEX RECEPTACLE - SPECIAL MOUNTING HEIGHT	ABOVE COUNTER SEE SPECS.		FIRE ALARM SMOKE DETECTOR, DUCT MOUNTED	---
	DUPLEX RECEPTACLE IN FLOOR BOX - SEE E5.XX SERIES DRAWINGS FOR EXACT FLOOR BOX TO BE PROVIDED.	MOUNTED IN FLOOR BOX SEE SPECS.		TAMPERS SWITCH	---
	GFCI, 120V. DUPLEX RECEPTACLE	1'-6" AFF TO CL		FLOW SWITCH	---
	GFCI, 120V. DUPLEX RECEPTACLE - ABOVE COUNTER	ABOVE COUNTER SEE SPECS.		POST INDICATOR VALVE	---
	SPECIAL SINGLE RECEPTACLE - REFER TO DWGS FOR CONFIGURATION	---		MAGNETIC HOLD OPEN - 24V DC	6'-4" AFF TO CL
	120V. DUPLEX RECEPTACLE FOR WALL MOUNTED TELEVISION - SPECIAL MOUNTING HEIGHT	7'-0" AFF TO CL	SECURITY		
	TRANSIENT VOLTAGE SURGE SUPPRESSION	---		CCTV CAMERA	---
	WEATHERPROOF	---		PUSH BUTTON TO LOCK DOORS	COORD. WITH ARCHITECT
	WALL MOUNTED DEVICE	---		CCTV MONITOR	COORD. WITH ARCHITECT
	LIGHTING CONTROL PHOTO-CELL	---	LIGHTING CONTROLS		
	DATA SYSTEM GROUND BAR. 12"x2"x1/4" THICK COPPER GROUND BAR. ISOLATED FROM THE STRUCTURE	---		WATTSTOPPER "LMR-101" ON/OFF ROOM CONTROLLER OR EQUAL.	MTD. ABOVE ACCESSIBLE CEILING
	OVERHEAD ELECTRICAL PRIMARY	---		WATTSTOPPER "LMR-102" DUAL RELAY ON/OFF ROOM CONTROLLER OR EQUAL.	MTD. ABOVE ACCESSIBLE CEILING
	UNDERGROUND ELECTRICAL PRIMARY	---		WATTSTOPPER "LMR-212" DUAL RELAY ON/OFF/0-10V DIMMING ROOM CONTROLLER OR EQUAL.	MTD. ABOVE ACCESSIBLE CEILING
	UNDERGROUND ELECTRICAL SECONDARY	---		WATTSTOPPER WALL SWITCH SINGLE BUTTON PASSIVE INFERRED OCCUPANCY SENSOR DIGITAL WALL SWITCH OR EQUAL.	48" AFF
	UNDERGROUND COMMUNICATIONS	---		WATTSTOPPER "LMDX-100" DUAL TECHNOLOGY CORNER MOUNTED OCCUPANCY SENSOR OR EQUAL.	MOUNT PER VENDOR REC
DOOR ACCESS					
	ELECTRIC DOOR HINGE STRIKE - (SEE SYSTEMS COORDINATION SCHEDULE)	CLG. MTD.		WATTSTOPPER "LSW-100" SINGLE BUTTON DIGITAL WALL SWITCH OR EQUAL.	48" AFF
	DOOR ALARM CONTACT - (SEE SYSTEMS COORDINATION SCHEDULE)	MOUNT PER VENDOR REC		WATTSTOPPER "LMDW-102" TWO BUTTON OCCUPANCY SENSOR PIR DIGITAL WALL SWITCH OR EQUAL.	48" AFF
	CARD READER - (SEE SYSTEMS COORDINATION SCHEDULE)	46" AFF		WATTSTOPPER "ELCU-200" EMERGENCY BYPASS OR EQUAL.	MTD. ABOVE ACCESSIBLE CEILING
	PROVIDE CONNECTION TO FIRE ALARM SYSTEM (SEE SYSTEMS COORDINATION SCHEDULE)	---		WATTSTOPPER "LML-101" DIGITAL PLUG LOAD ROOM CONTROLLER.	MTD. ABOVE ACCESSIBLE CEILING
	SWITCHED 120V. DUPLEX RECEPTACLE	1'-6" AFF TO CL		VOICE / DATA OUTLET FOR A/V EQUIPMENT - SEE E5.XX SERIES DRAWING. FIVE SQUARE BOX WITH 1 1/4" CONDUIT TO ABOVE ACCESSIBLE CORRIDOR CEILING. # ADJACENT TO OUTLET IS REFERENCE ONLY INDICATING NUMBER OF CABLES. NO NUMBER = 1 CABLE.	SEE A/V DRAWINGS ON E5.XX SERIES

THE CONTRACTOR SHOULD REFER E5.XX SERIES RACEWAY DRAWINGS FOR ALL AUDIO/VISUAL EQUIPMENT ROUGH-IN AND RACEWAY NEEDS. THE ELECTRICAL CONTRACTOR SHALL PROVIDE AUDIO/VIDEO BACKBOXES, CONDUITS, FLOOR BOXES, POWER AND RELATED ITEMS AS OUTLINED IN THESE DRAWINGS.

628 WASHINGTON AVENUE, SUITE C
OCEAN SPRINGS, MS 39564
PHONE: (228) 742-1975 FAX: (228) 749-9545
EMAIL: CONTACT@ALIREDAIRARCHITECTURALGROUP.COM

alired
ARCHITECTURAL
GROUP

ELECTRICAL SCHEDULES & LEGENDS

CS# 108-281 GREENE HALL RENOVATIONS
UNIVERSITY OF SOUTHERN MISSISSIPPI
HATTIESBURG CAMPUS

APPROVED BY: 2014-29

APPROVED BY: 05-19-2017

APPROVED BY:

JOB NUMBER: 2014-29

DATE: 05-19-2017

REVISION:

DRAWN BY:

CHECKED BY:

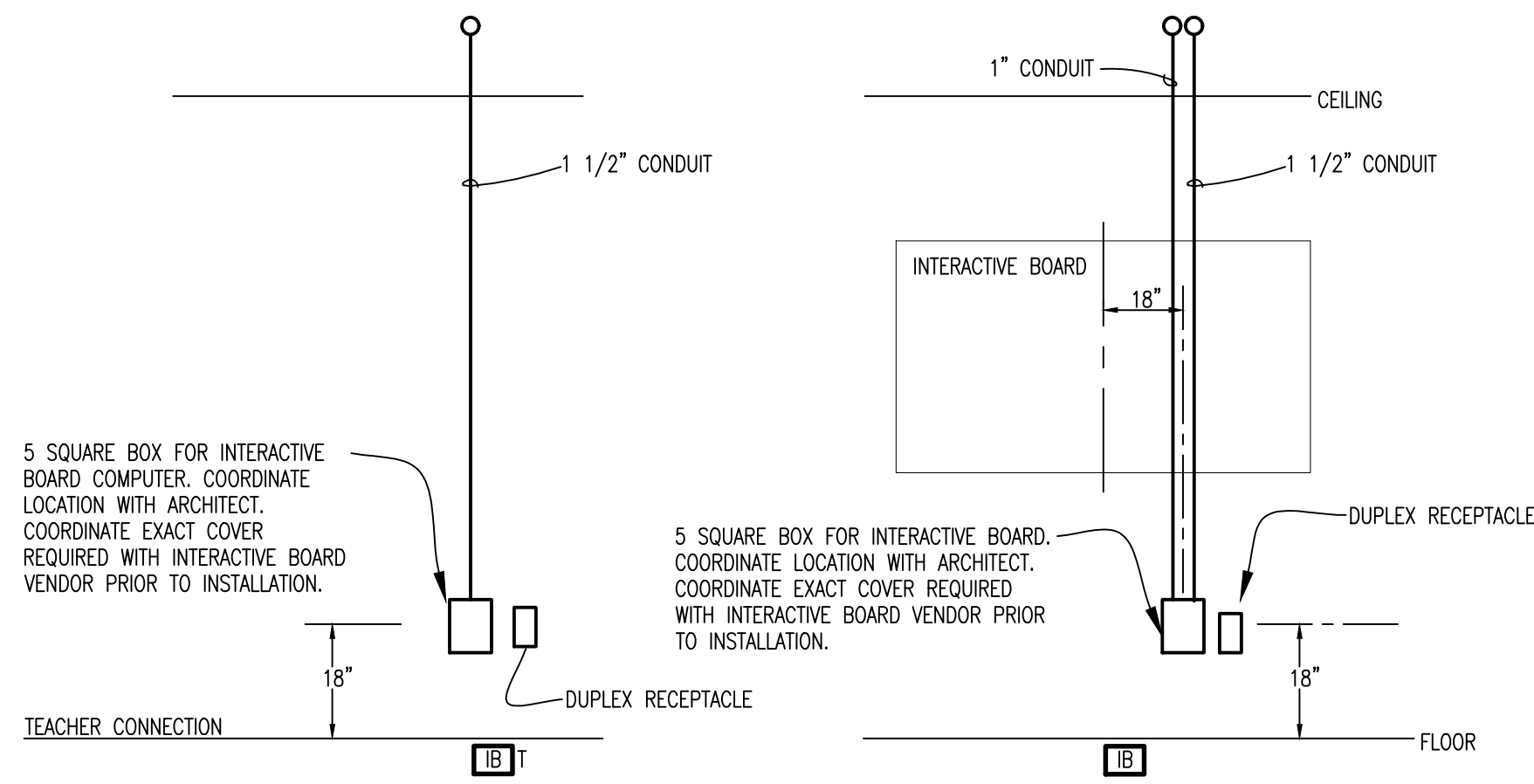
05-19-2017

COR#2: CHANGE ORDER REQUEST #2-12152017

E0.01R

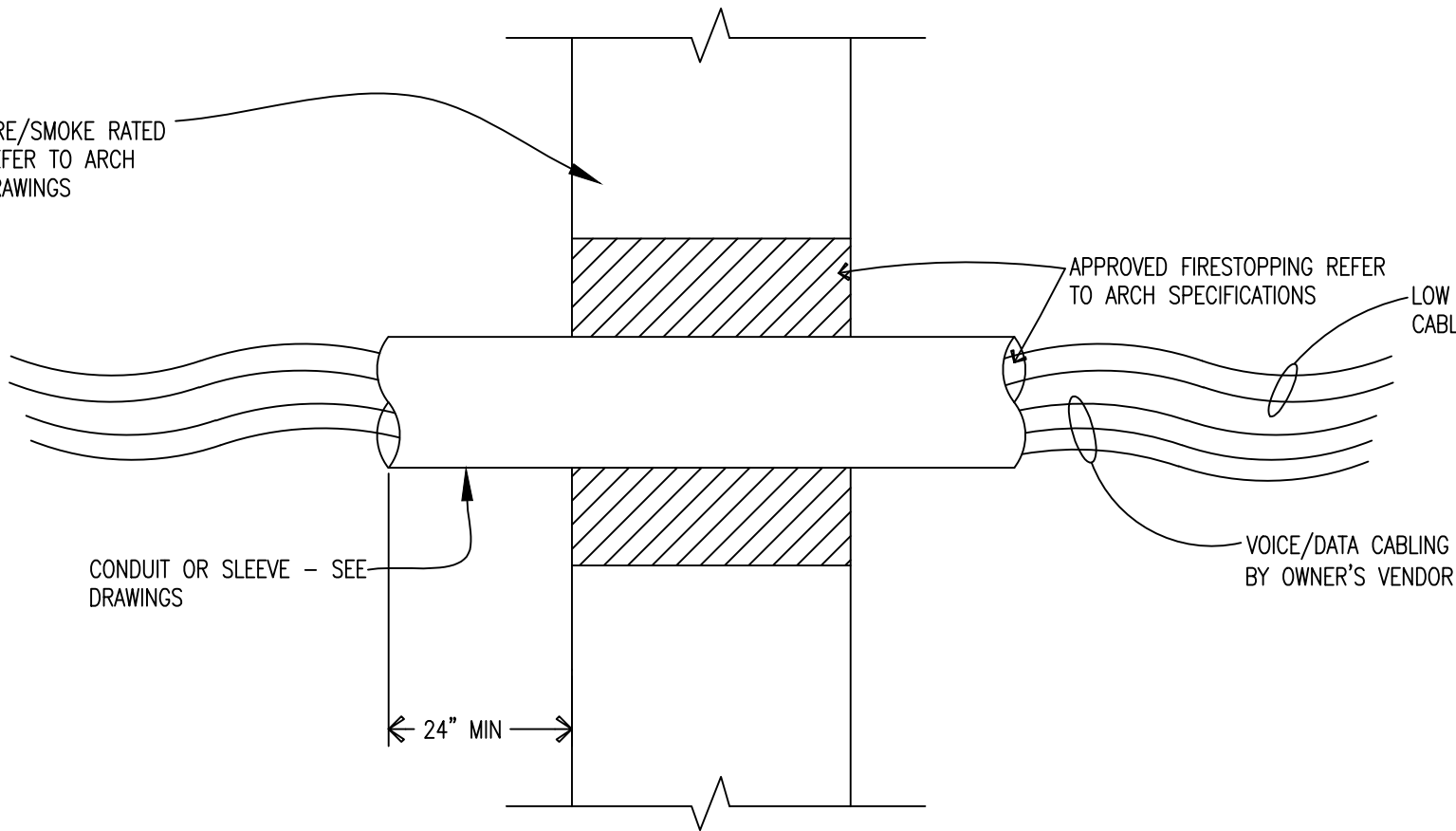
SHEET

OF SHEETS



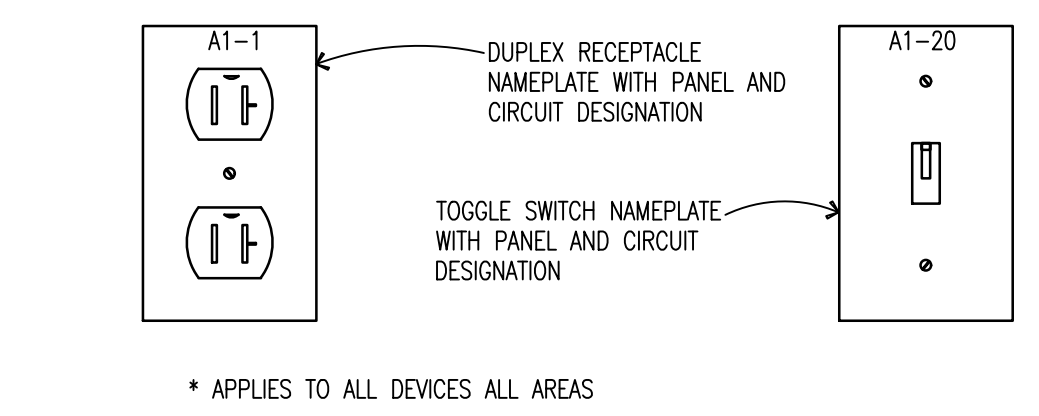
1 INTERACTIVE BOARD RACEWAY DETAIL

E0.02 SCALE: NONE



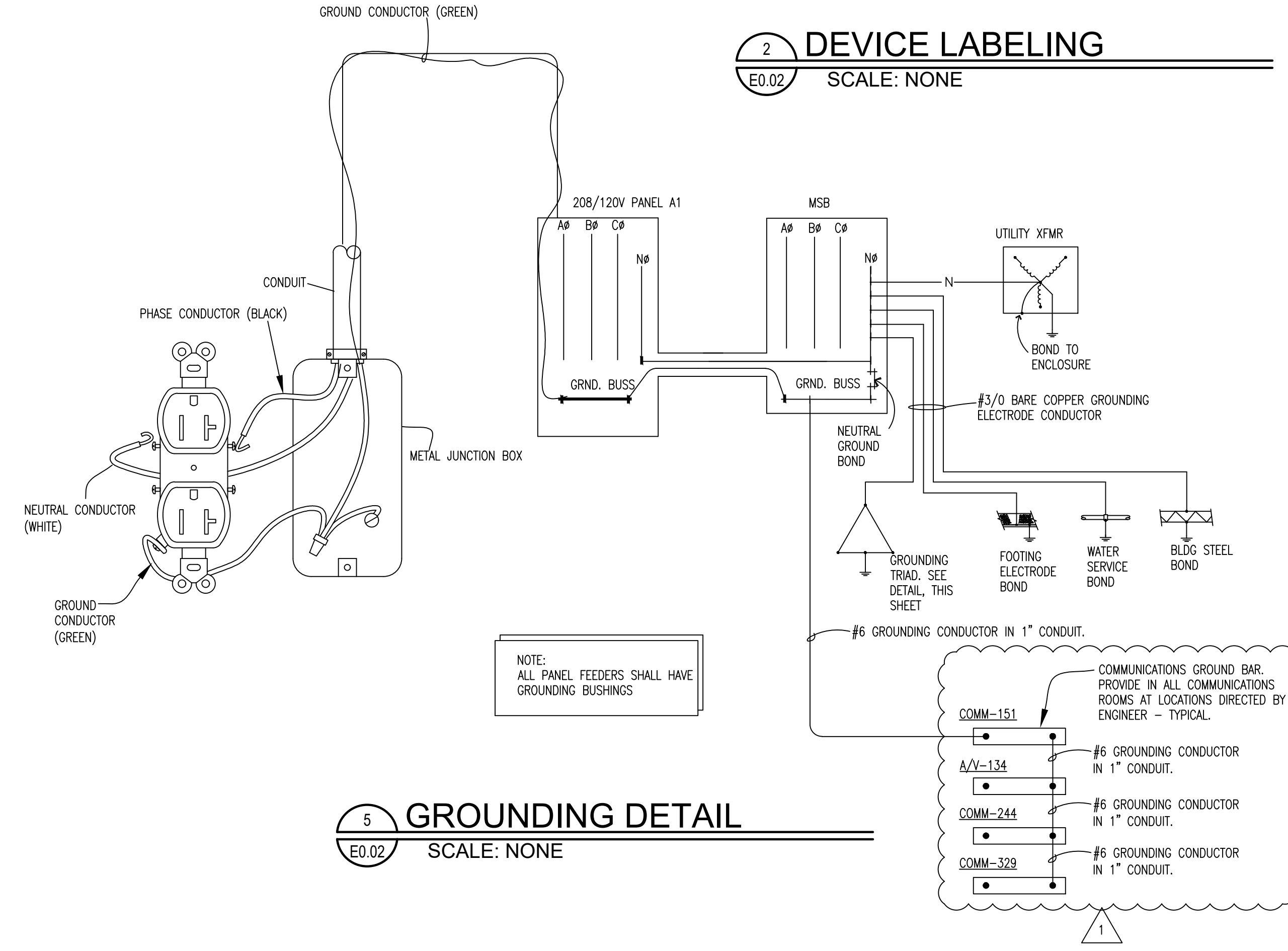
4 VOICE / DATA LOW VOLTAGE CABLING FIRE STOP DETAIL

E0.02 SCALE: NONE



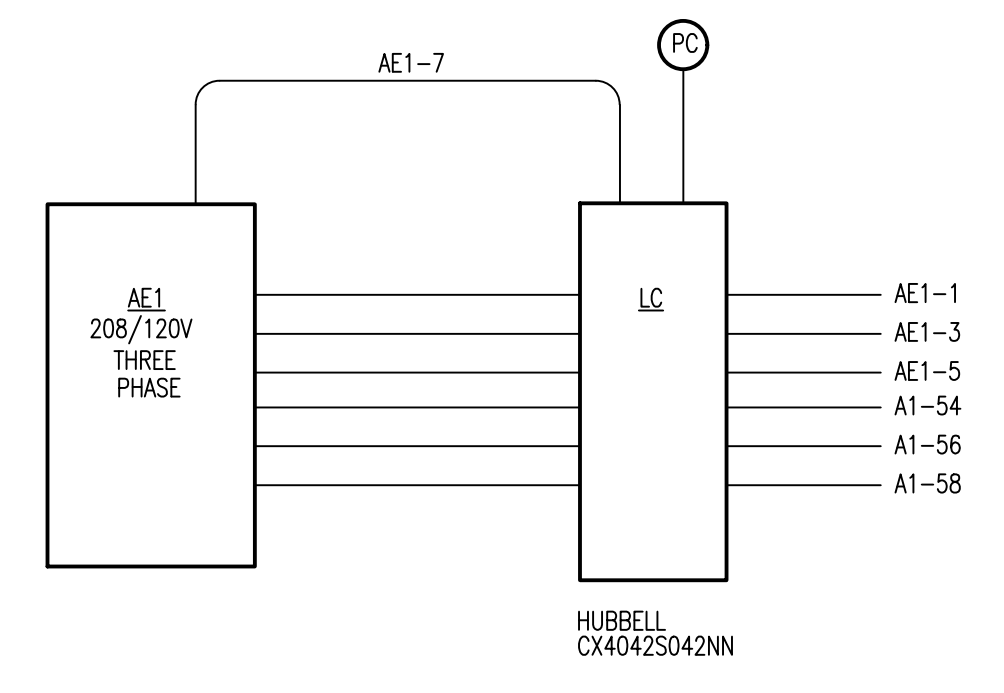
2 DEVICE LABELING

E0.02 SCALE: NONE



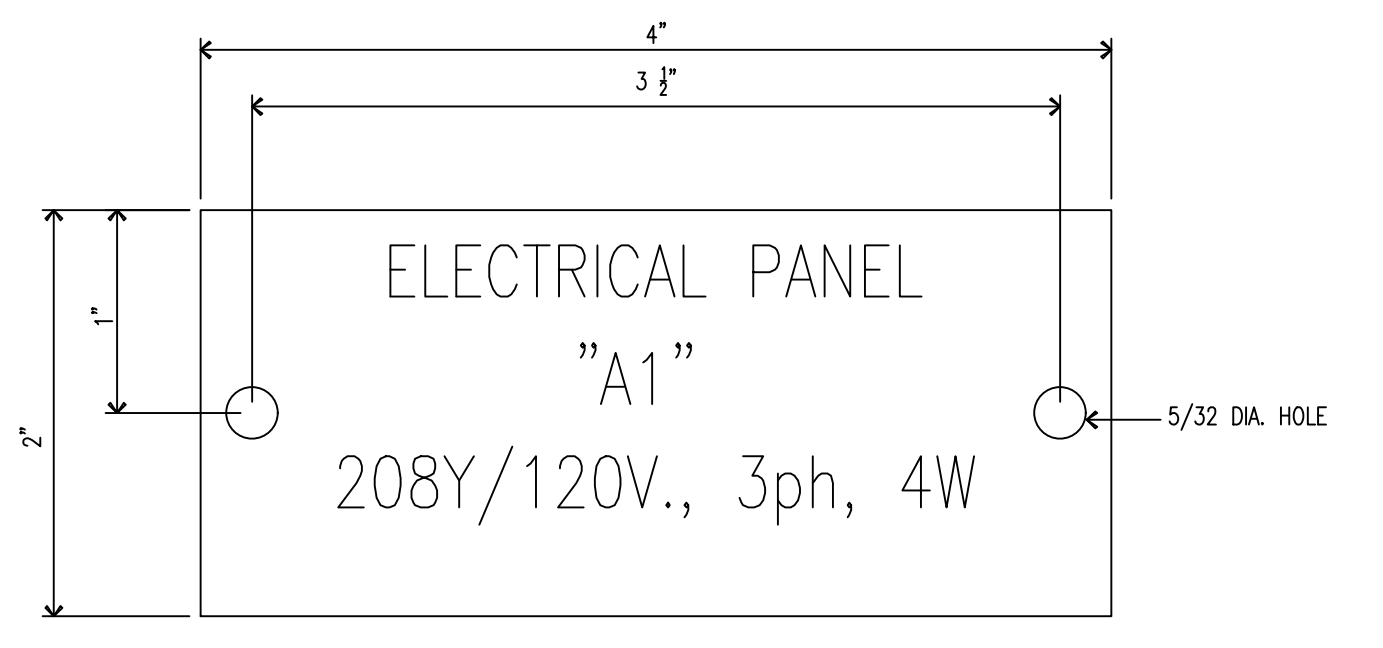
5 GROUNDING DETAIL

E0.02 SCALE: NONE



3 LIGHTING CONTROL PANEL "LC"

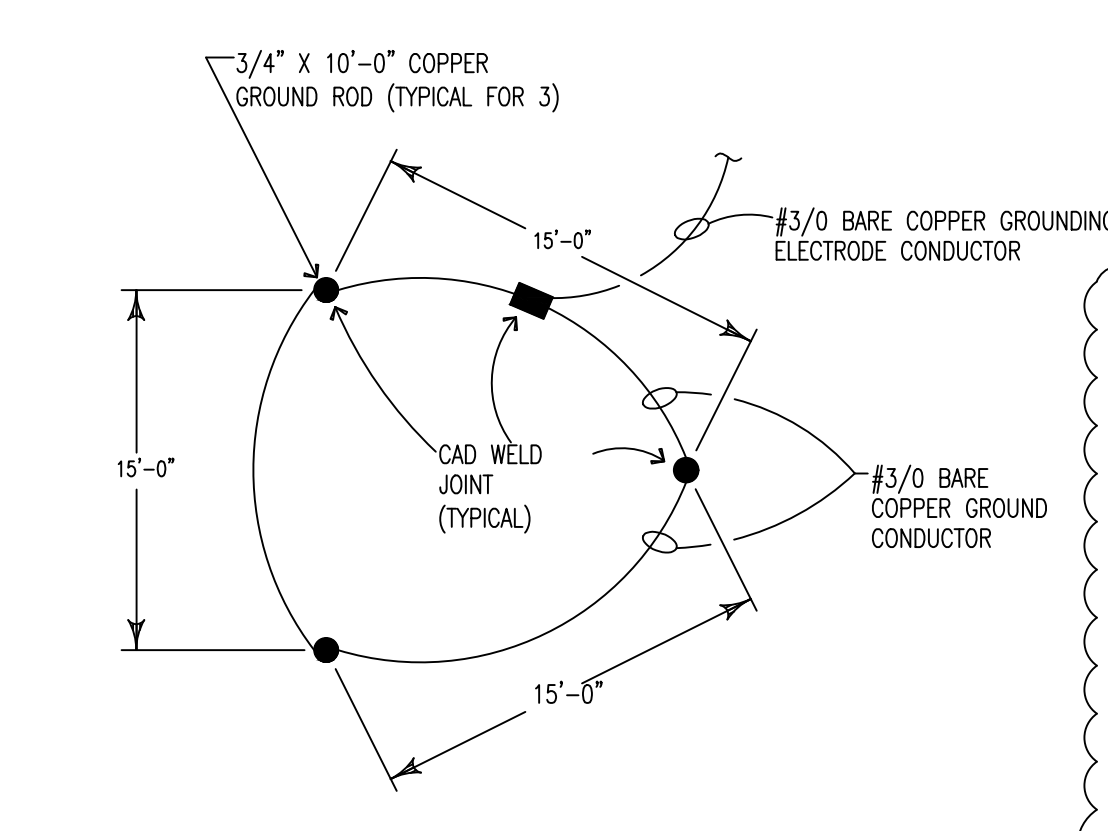
E0.02 SCALE: NONE



- NOTES:**
- REFER TO SPECIFICATIONS FOR ADDITIONAL NAMEPLATE REQUIREMENTS.
 - NAMEPLATE TO BE 1/16" WHITE PLASTIC WITH BLACK CENTER LAMINATION. FACE TO BE WHITE, ENGRAVED LETTERS TO BE BLACK. EMERGENCY PANEL SHALL BE "RED" IN LIEU OF "BLACK".
 - SECURE NAMEPLATE TO SURFACES WITH (2) FLAT HEAD BRASS SCREWS.

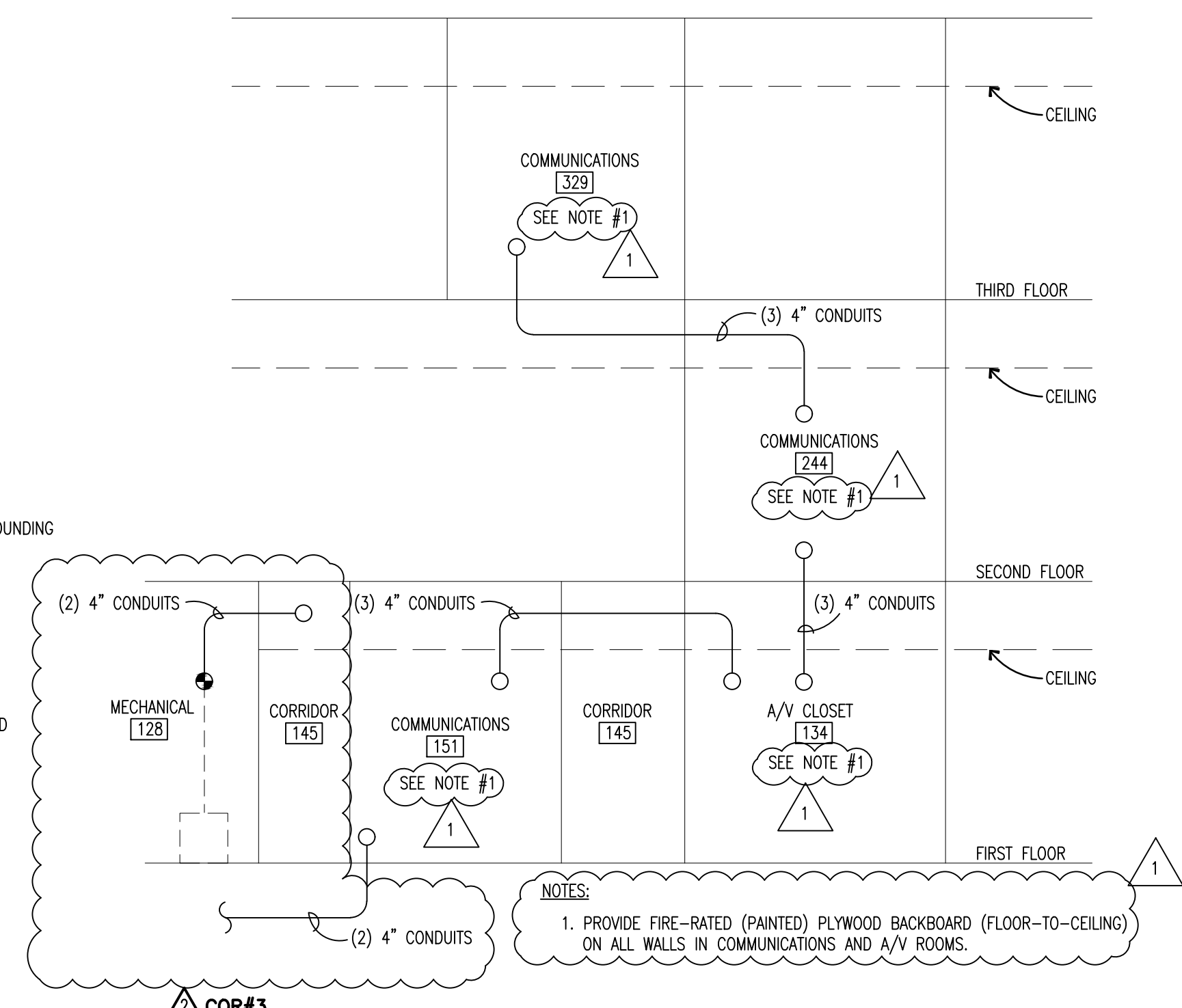
6 PANEL LABELING

E0.02 SCALE: NONE



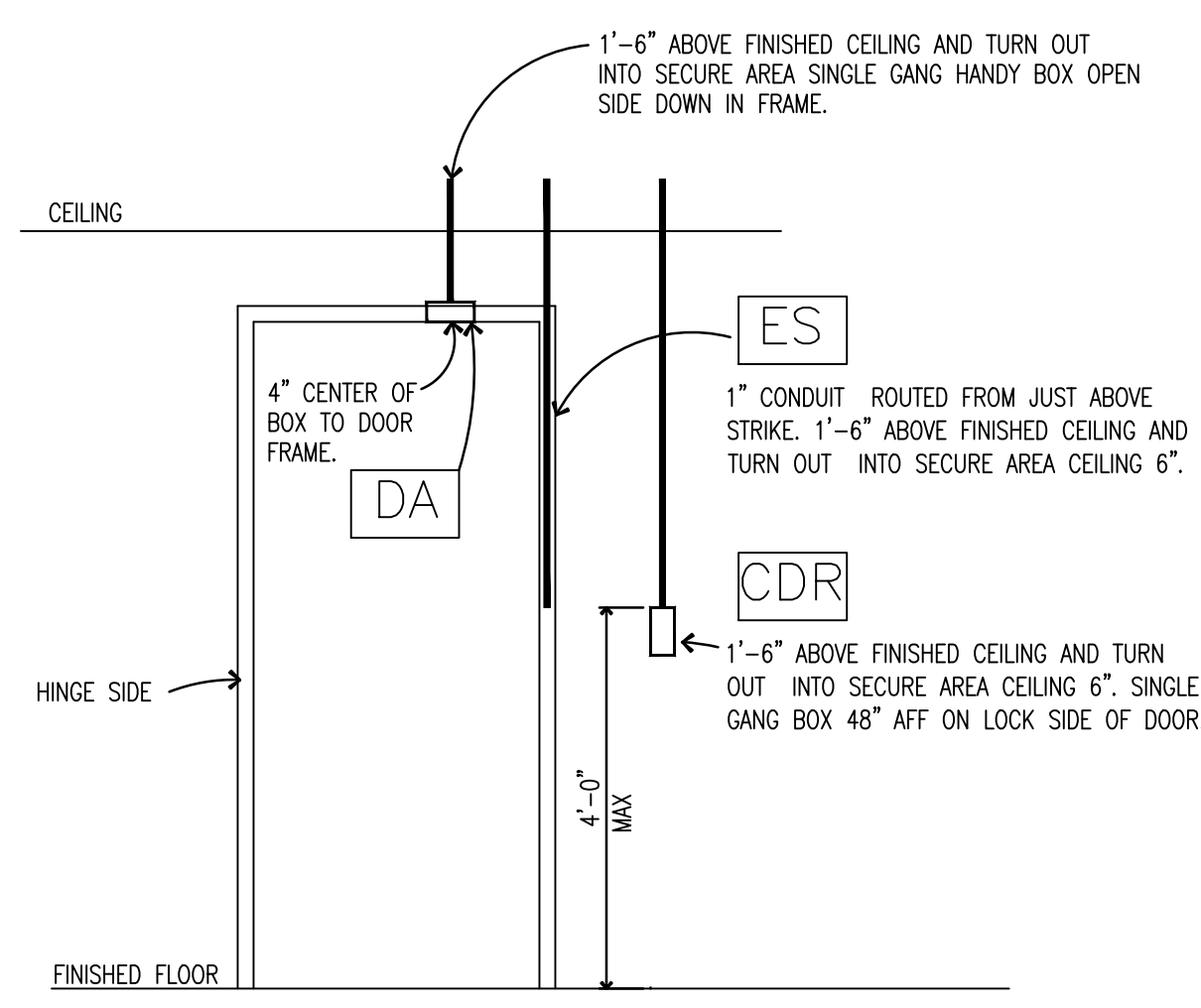
7 GROUNDING TRIAD

E0.02 SCALE: NONE



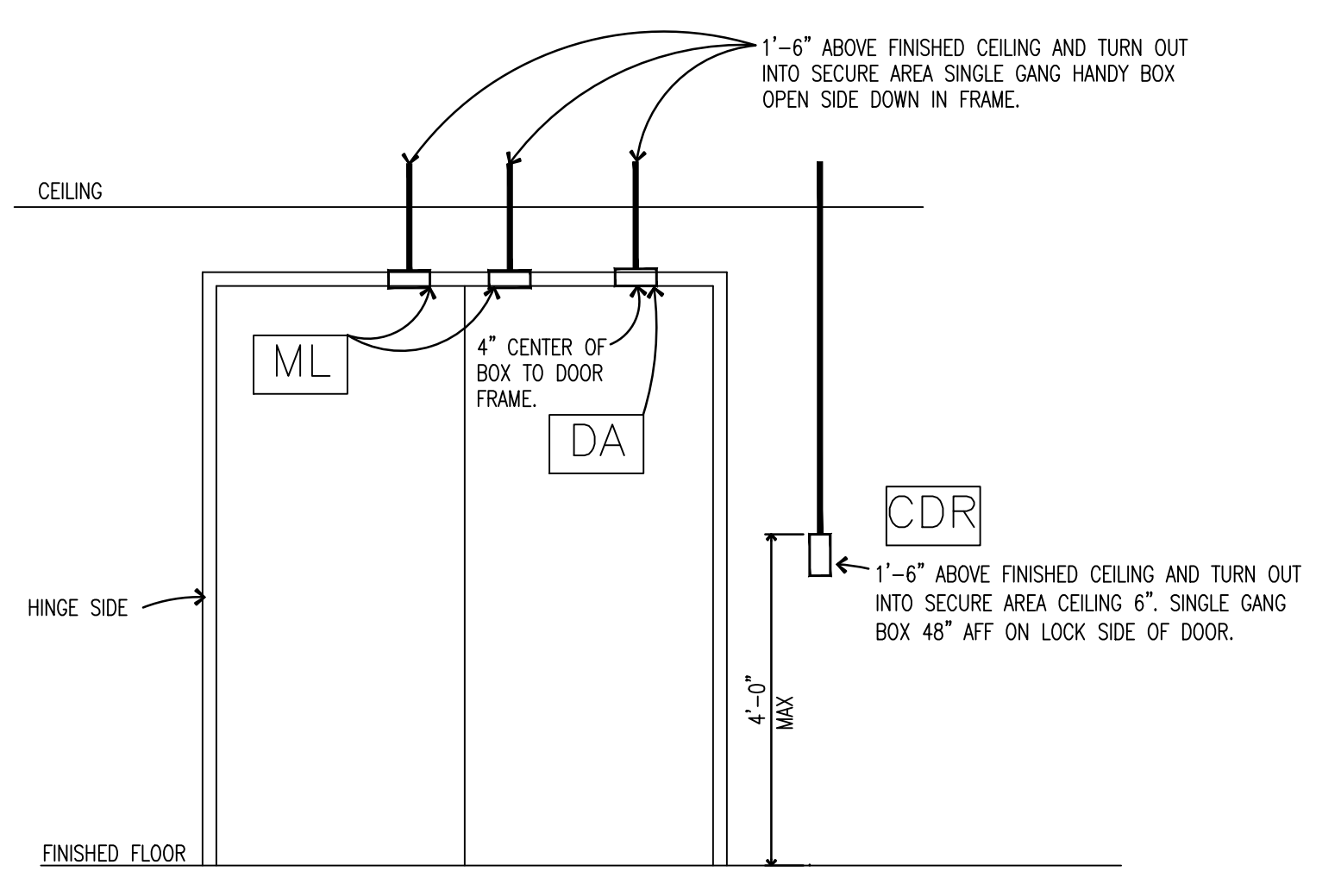
8 AV & DATA RISER

E0.02 SCALE: NONE



9 DOOR ACCESS DETAIL

E0.02 SCALE: NONE

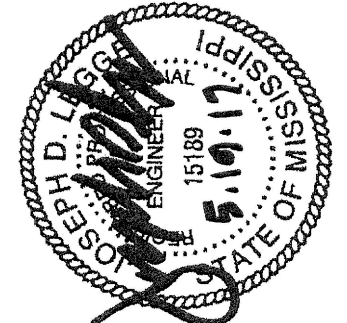


10 DOOR ACCESS DETAIL

E0.02 SCALE: NONE

APPROVED BY	APPROVED BY	APPROVED BY
JOB NUMBER 2014-29	DATE 05-19-2017	REVISION ADD#1 6/7/17
DRAWN BY	CHECKED BY	

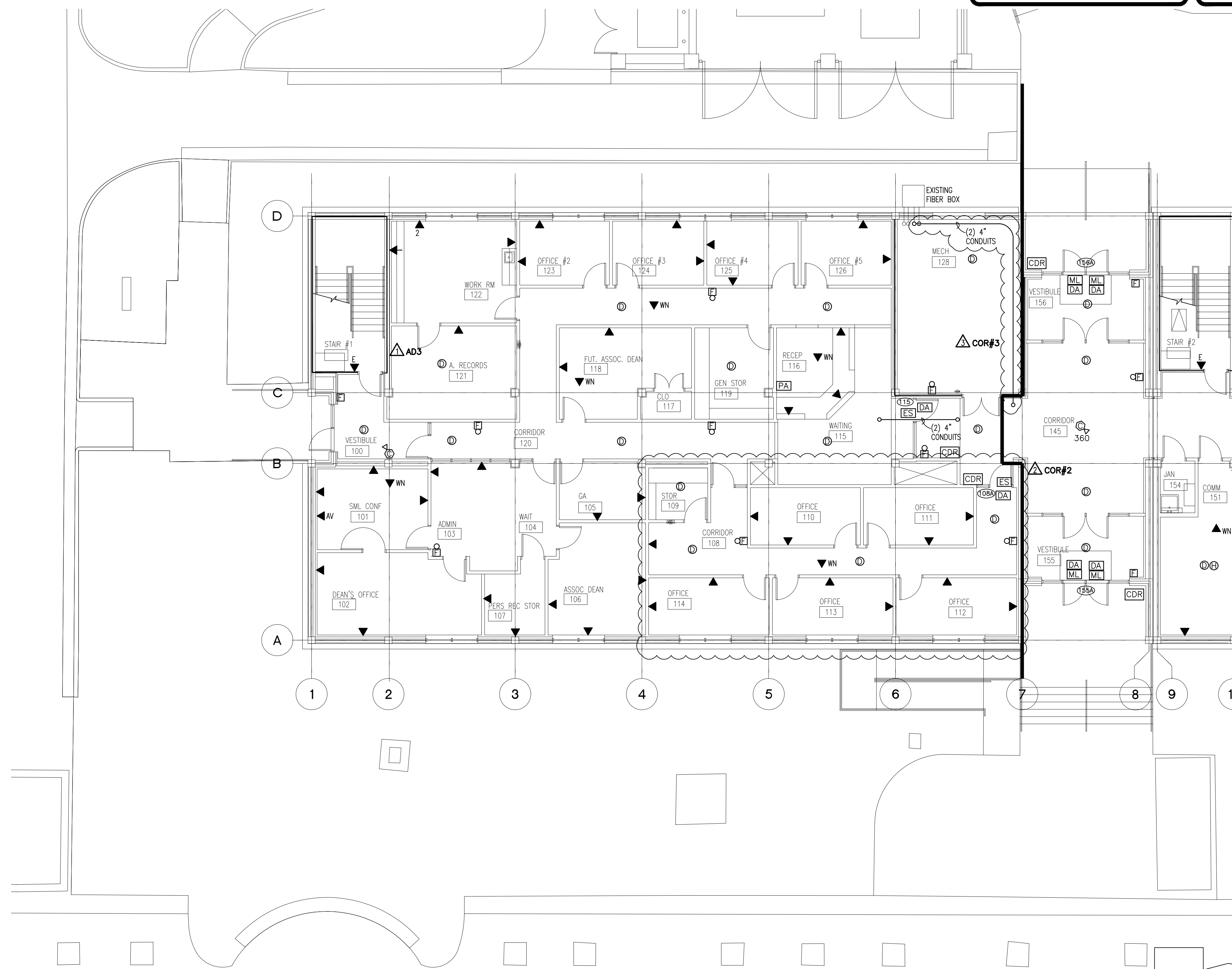
05-19-2017
COR#: CHANGE ORDER
REQUEST #2-12152017



SHEET

E0.02R

OF SHEETS



GENERAL NOTES

- SEE MECHANICAL DRAWINGS TO CONFIRM DUCT MOUNTED SMOKE DETECTOR LOCATIONS.
- THE CONTRACTOR SHALL REFER TO E5.XX SERIES RACEWAY DRAWINGS FOR VOICE DATA OUTLETS THAT DEAL DIRECTLY WITH THAT SYSTEM. THE CONTRACTOR IS RESPONSIBLE FOR ALL VOICE DATA DEVICES.

DEMOLITION NOTES

- THE CONTRACTOR SHALL VISIT THE SITE BEFORE SUBMITTING A BID TO OBSERVE THE EXISTING CONDITION AND INSTALLATION.
- WORK IN THE EXISTING BUILDING SHALL BE SCHEDULED WELL IN ADVANCE WITH THE OWNER. WORK SHALL BE PERFORMED AT SUCH TIMES AND UNDER SUCH CONDITIONS AS SUIT THE CONVENIENCE OF THE OWNER. PLAN THE WORK TO MINIMIZE DISRUPTION OF NORMAL OPERATION.
- REMOVE WIRING DEVICES, FIXTURES, COMPONENTS, ELECTRICAL EQUIPMENT, CONDUCTORS, BOXES, AND CONDUITS NOT REQUIRED TO REMAIN IN SERVICE IN REMODELED AREAS WHEN THIS PROJECT IS COMPLETE.
- RECONNECT CIRCUITS TO OTHER PANELBOARDS WHEN REQUIRED TO COMPLETE THE RENOVATION SHOWN.
- REMOVE EXISTING CONDUIT AND WIRE FROM AREAS TO BE REMODELED, BACK TO PANELBOARD, CABINET OR JUNCTION BOX. WHERE SUCH WORK WOULD NOT BE POSSIBLE WITHOUT DISTURBING AREAS NOT BEING RENOVATED, CONSULT WITH THE ARCHITECT PRIOR TO PERFORMING THIS WORK.
- WHERE A CIRCUIT IS INTERRUPTED BY REMOVAL OF A DEVICE OR FIXTURE FROM THAT CIRCUIT, INSTALL WIRE AND CONDUIT AS REQUIRED TO RESTORE SERVICE TO THE REMAINING DEVICES AND FIXTURES ON THAT CIRCUIT.
- LIGHTING FIXTURES, WIRING DEVICES, PANELBOARDS, AND CONDUCTORS REMOVED SHALL BE OFFERED TO THE OWNER. IF HE CHOOSES TO RETAIN THESE ITEMS OR PART OF THESE ITEMS, TURN THEM OVER TO HIM. ITEMS REJECTED BY THE OWNER SHALL BE REMOVED FROM THE PROJECT SITE BY THE CONTRACTOR.

KEYNOTES

1 INTERCEPT (2) TWO CONDUITS FROM EXISTING FIBER BOX AND ROUT TO CORRIDOR 145

1 FIRST FLOOR PLAN - SYSTEMS - PART A
 E3.01 SCALE : 1/8"=1'-0"

THE CONTRACTOR SHOULD REFER E5.XX SERIES RACEWAY DRAWINGS FOR ALL AUDIO/VISUAL EQUIPMENT ROUGH-IN AND RACEWAY NEEDS. THE ELECTRICAL CONTRACTOR SHALL PROVIDE AUDIO/VIDEO BACKBOXES, CONDUITS, FLOOR BOXES, POWER AND AND RELATED ITEMS AS OUTLINED IN THESE DRAWINGS.

628 WASHINGTON AVENUE, SUITE C
 OCEAN SPRINGS, MS 39564
 PHONE: (228) 742-1975 FAX: (228) 749-9545
 EMAIL: CONTACT@ALLREDARCHITECTURALGROUP.COM

allred ARCHITECTURAL GROUP

FIRST FLOOR PLAN SYSTEMS - PART A

GS# 108-281 GREENE HALL RENOVATIONS
 UNIVERSITY OF SOUTHERN MISSISSIPPI
 HATTIESBURG CAMPUS

APPROVED BY	APPROVED BY	APPROVED BY
2014-29	05-19-2017	
DATE	REVISION	DRAWN BY
		CHECKED BY

05-19-2017
 COR#2: CHANGE ORDER
 REQUEST #2-12152017

SHEET

E3.01R

OF SHEETS

KEYNOTES

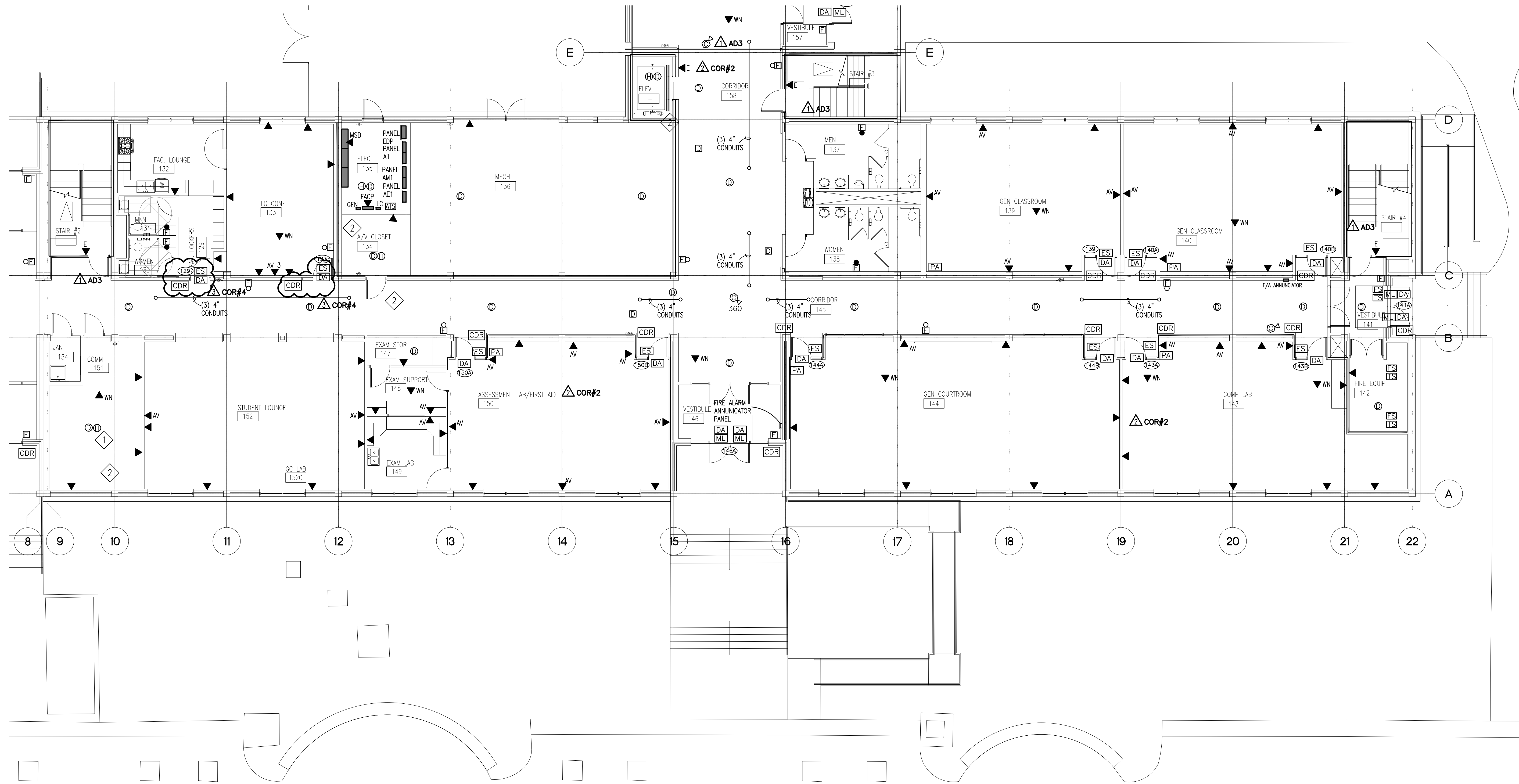
- 1 THIS NOTE IS FOR REFERENCE ONLY AND IS NOT TO BE PROVIDED BY THIS CONTRACTOR. THE CABLING CONTRACTOR SHOULD PROVIDE 12 STRAND MM FIBER WITH "LC" TO COMM ROOM-134. PROVIDE J-HOOKS AT 5'-0" OC FOR FIBER SUPPORT
- 2 HEAT DETECTOR TO CONTROL SOLENOID VALVE ASSOCIATED WITH SPRINKLER SYSTEM. SEE SPECIFICATION SECTION 283111 FOR REQUIREMENTS.

GENERAL NOTES

- 1. SEE MECHANICAL DRAWINGS TO CONFIRM DUCT MOUNTED SMOKE DETECTOR LOCATIONS.
- 2. THE CONTRACTOR SHALL REFER TO E5.XX SERIES RACEWAY DRAWINGS FOR VOICE DATA OUTLETS THAT DEAL DIRECTLY WITH THAT SYSTEM. THE CONTRACTOR IS RESPONSIBLE FOR ALL VOICE DATA DEVICES.

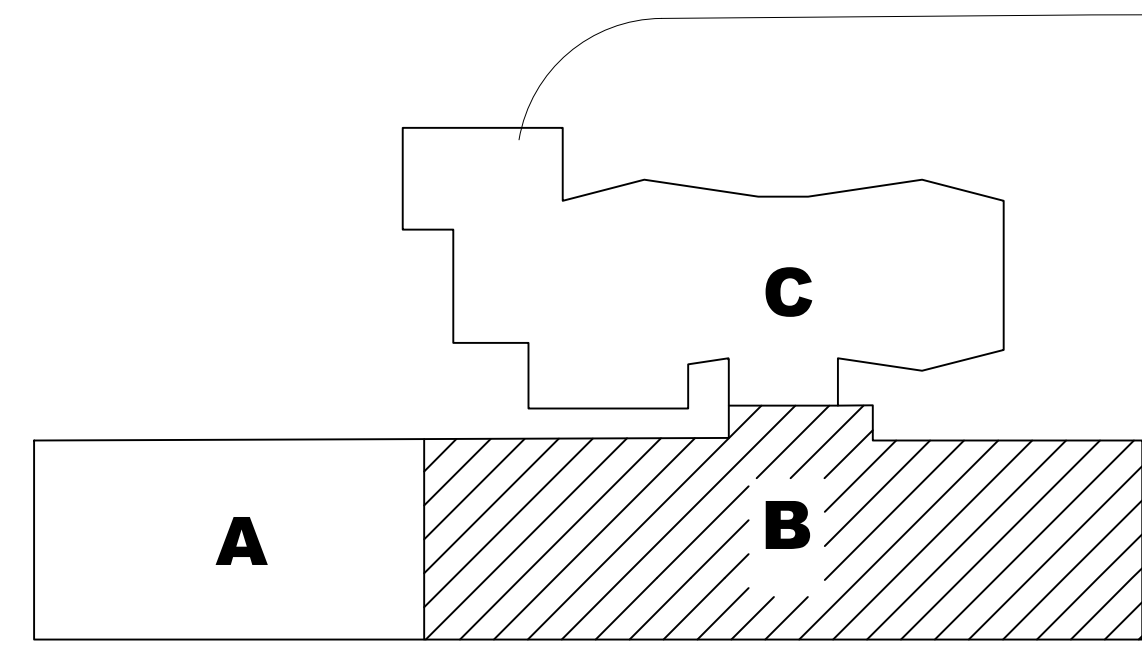
DEMOLITION NOTES

- 1. THE CONTRACTOR SHALL VISIT THE SITE BEFORE SUBMITTING A BID TO OBSERVE THE EXISTING CONDITION AND INSTALLATION.
- 2. WORK IN THE EXISTING BUILDING SHALL BE SCHEDULED WELL IN ADVANCE WITH THE OWNER. WORK SHALL BE PERFORMED AT SUCH TIMES AND UNDER SUCH CONDITIONS AS SUIT THE CONVENIENCE OF THE OWNER. PLAN THE WORK TO MINIMIZE DISRUPTION OF NORMAL OPERATION.
- 3. REMOVE WIRING DEVICES, FIXTURES, COMPONENTS, ELECTRICAL EQUIPMENT, CONDUCTORS, BOXES, AND CONDUITS NOT REQUIRED TO REMAIN IN SERVICE IN REMODELED AREAS WHEN THIS PROJECT IS COMPLETE.
- 4. RECONNECT CIRCUITS TO OTHER PANELBOARDS WHEN REQUIRED TO COMPLETE THE RENOVATION SHOWN.
- 5. REMOVE EXISTING CONDUIT AND WIRE FROM AREAS TO BE REMODELED, BACK TO PANELBOARD, CABINET OR JUNCTION BOX. WHERE SUCH WORK WOULD NOT BE POSSIBLE WITHOUT DISTURBING AREAS NOT BEING RENOVATED, CONSULT WITH THE ARCHITECT PRIOR TO PERFORMING THIS WORK.
- 6. WHERE A CIRCUIT IS INTERRUPTED BY REMOVAL OF A DEVICE OR FIXTURE FROM THAT CIRCUIT, INSTALL WIRE AND CONDUIT AS REQUIRED TO RESTORE SERVICE TO THE REMAINING DEVICES AND FIXTURES ON THAT CIRCUIT.
- 7. LIGHTING FIXTURES, WIRING DEVICES, PANELBOARDS, AND CONDUCTORS REMOVED SHALL BE OFFERED TO THE OWNER. IF HE CHOOSES TO RETAIN THESE ITEMS OR PART OF THESE ITEMS, TURN THEM OVER TO HIM. ITEMS REJECTED BY THE OWNER SHALL BE REMOVED FROM THE PROJECT SITE BY THE CONTRACTOR.



THE CONTRACTOR SHOULD REFER E5.XX SERIES RACEWAY DRAWINGS FOR ALL AUDIO/VISUAL EQUIPMENT ROUGH-IN AND RACEWAY NEEDS. THE ELECTRICAL CONTRACTOR SHALL PROVIDE AUDIO/VIDEO BACKBOXES, CONDUITS, FLOOR BOXES, POWER AND AND RELATED ITEMS AS OUTLINED IN THESE DRAWINGS.

FIRST FLOOR SYSTEMS - PART B
 SCALE : 1/8"=1'-0"



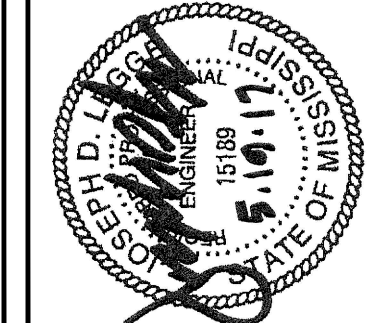
628 WASHINGTON AVENUE, SUITE C
 OCEAN SPRINGS, MS 39564
 PHONE: (228) 742-1975 FAX: (228) 749-9545
 EMAIL: CONTACT@ALLREDARCHITECTURALGROUP.COM

allred
 ARCHITECTURAL
 GROUP

FIRST FLOOR PLAN SYSTEMS - PART B
 CS# 108-281 GREENE HALL RENOVATIONS
 UNIVERSITY OF SOUTHERN MISSISSIPPI
 HATTIESBURG CAMPUS

APPROVED BY	APPROVED BY	APPROVED BY
2014-29	05-19-2017	
DATE	REVISION	CHECKED BY

05-19-2017
 COR#: CHANGE ORDER
 REQUEST #2-12152017



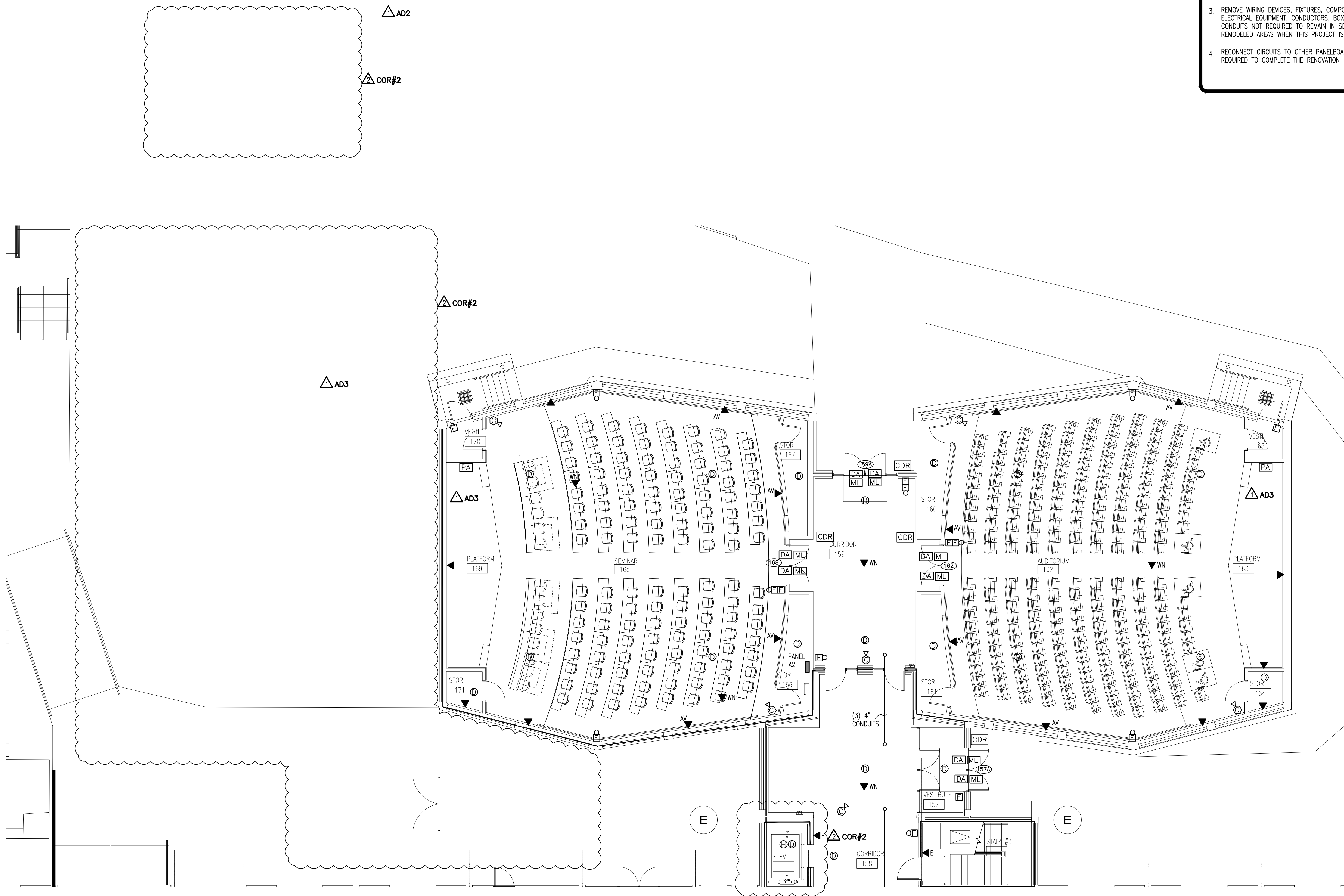
SHEET
E3.02R
 OF SHEETS

GENERAL NOTES

1. SEE MECHANICAL DRAWINGS TO CONFIRM DUCT MOUNTED SMOKE DETECTOR LOCATIONS.
2. THE CONTRACTOR SHALL REFER TO E5.XX SERIES RACEWAY DRAWINGS FOR VOICE DATA OUTLETS THAT DEAL DIRECTLY WITH THAT SYSTEM. THE CONTRACTOR IS RESPONSIBLE FOR ALL VOICE DATA DEVICES.

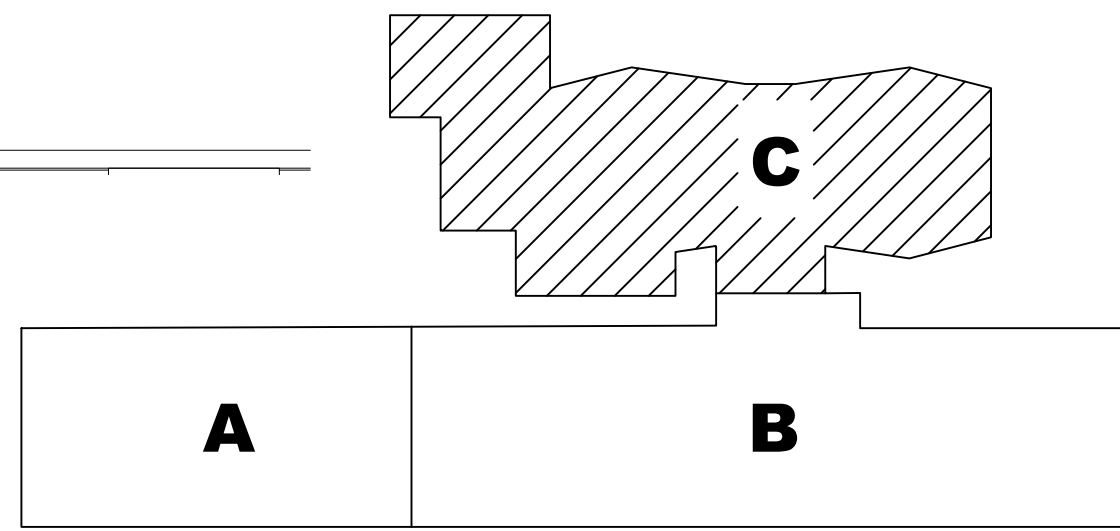
DEMOLITION NOTES

1. THE CONTRACTOR SHALL VISIT THE SITE BEFORE SUBMITTING A BID TO OBSERVE THE EXISTING CONDITION AND INSTALLATION.
2. WORK IN THE EXISTING BUILDING SHALL BE SCHEDULED WELL IN ADVANCE WITH THE OWNER. WORK SHALL BE PERFORMED AT SUCH TIMES AND UNDER SUCH CONDITIONS AS SUIT THE CONVENIENCE OF THE OWNER. PLAN THE WORK TO MINIMIZE DISRUPTION OF NORMAL OPERATION.
3. REMOVE WIRING DEVICES, FIXTURES, COMPONENTS, ELECTRICAL EQUIPMENT, CONDUCTORS, BOXES, AND CONDUITS NOT REQUIRED TO REMAIN IN SERVICE IN REMODELED AREAS WHEN THIS PROJECT IS COMPLETE.
4. RECONNECT CIRCUITS TO OTHER PANELBOARDS WHEN REQUIRED TO COMPLETE THE RENOVATION SHOWN.
5. REMOVE EXISTING CONDUIT AND WIRE FROM AREAS TO BE REMODELED, BACK TO PANELBOARD, CABINET OR JUNCTION BOX. WHERE SUCH WORK WOULD NOT BE POSSIBLE WITHOUT DISTURBING AREAS NOT BEING RENOVATED, CONSULT WITH THE ARCHITECT PRIOR TO PERFORMING THIS WORK.
6. WHERE A CIRCUIT IS INTERRUPTED BY REMOVAL OF A DEVICE OR FIXTURE FROM THAT CIRCUIT, INSTALL WIRE AND CONDUIT AS REQUIRED TO RESTORE SERVICE TO THE REMAINING DEVICES AND FIXTURES ON THAT CIRCUIT.
7. LIGHTING FIXTURES, WIRING DEVICES, PANELBOARDS, AND CONDUCTORS REMOVED SHALL BE OFFERED TO THE OWNER. IF HE CHOOSES TO RETAIN THESE ITEMS OR PART OF THESE ITEMS, TURN THEM OVER TO HIM. ITEMS REJECTED BY THE OWNER SHALL BE REMOVED FROM THE PROJECT SITE BY THE CONTRACTOR.



THE CONTRACTOR SHOULD REFER E5.XX SERIES RACEWAY DRAWINGS FOR ALL AUDIO/VISUAL EQUIPMENT ROUGH-IN AND RACEWAY NEEDS. THE ELECTRICAL CONTRACTOR SHALL PROVIDE AUDIO/VIDEO BACKBOXES, CONDUITS, FLOOR BOXES, POWER AND AND RELATED ITEMS AS OUTLINED IN THESE DRAWINGS.

FIRST FLOOR ELECTRICAL - SYSTEMS - PLAN - PART C
 1 E3.03 SCALE : 1/8"=1'-0"



APPROVED BY	APPROVED BY	APPROVED BY
JOB NUMBER 2014-29	DATE 05-19-2017	DESIGNED BY CJM
	REVIEWED CJM	CHECKED BY JDL

05-19-2017
 COR#2: CHANGE ORDER
 REQUEST #2-12152017



KEYNOTES

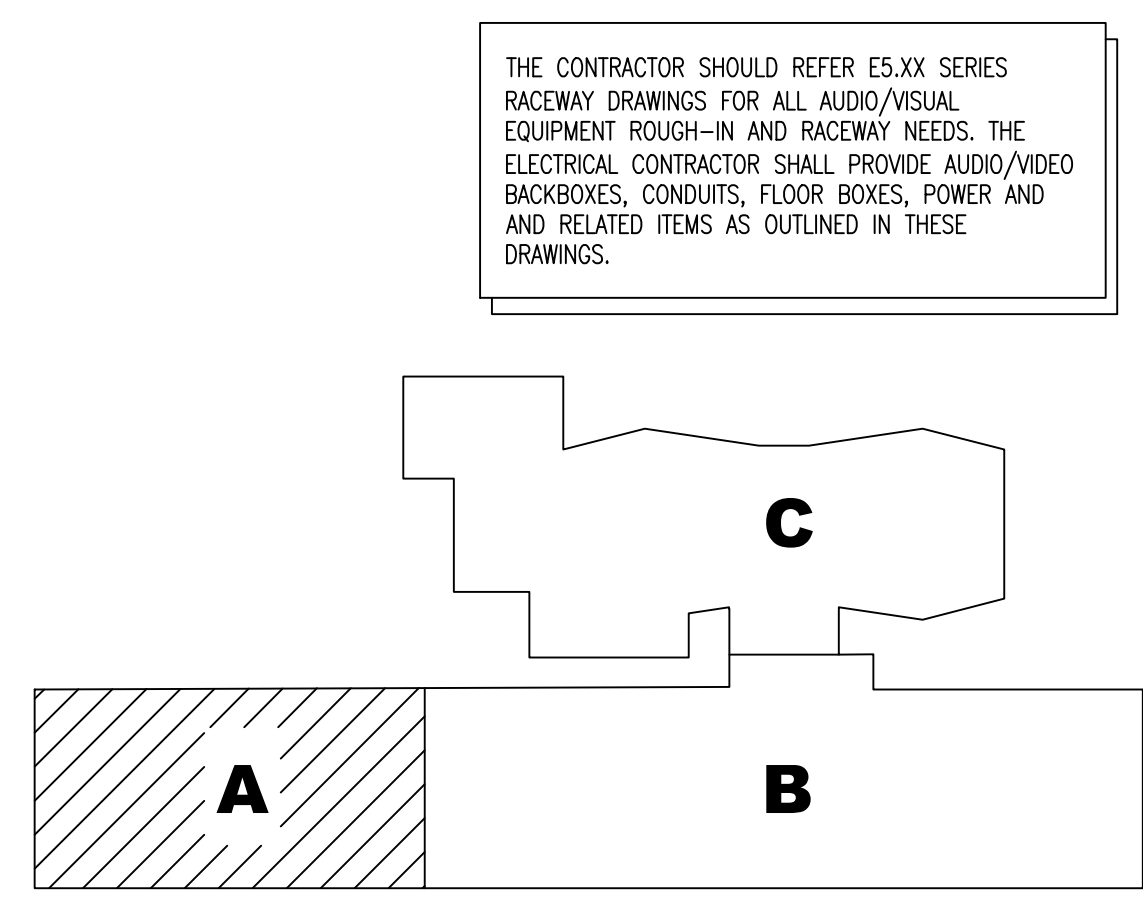
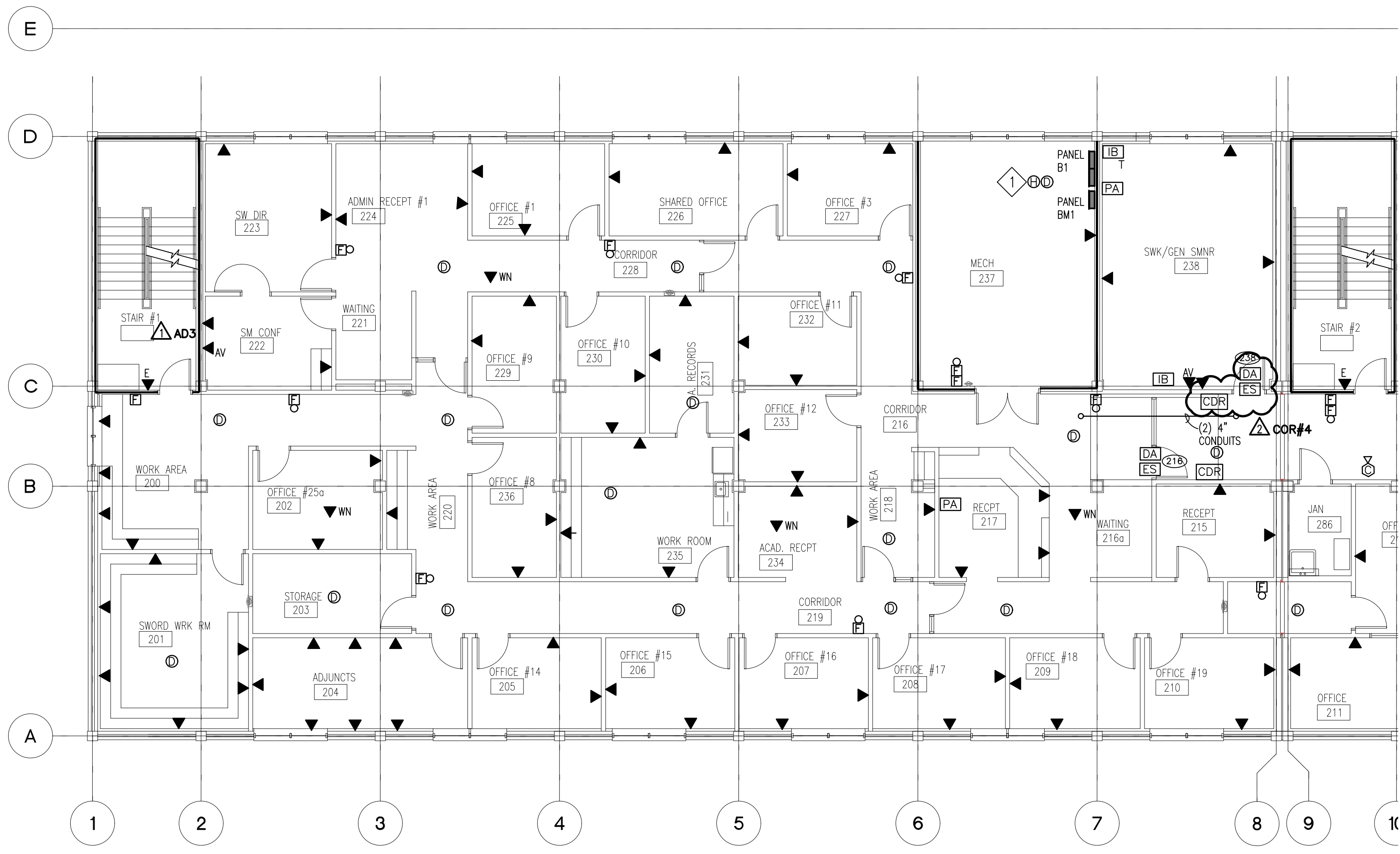
1. HEAT DETECTOR TO CONTROL SOLENOID VALVE ASSOCIATED WITH SPRINKLER SYSTEM. SEE SPECIFICATION SECTION 283111 FOR REQUIREMENTS.

GENERAL NOTES

- SEE MECHANICAL DRAWINGS TO CONFIRM DUCT MOUNTED SMOKE DETECTOR LOCATIONS.
- THE CONTRACTOR SHALL REFER TO E5.XX SERIES RACEWAY DRAWINGS FOR VOICE DATA OUTLETS THAT DEAL DIRECTLY WITH THAT SYSTEM. THE CONTRACTOR IS RESPONSIBLE FOR ALL VOICE DATA DEVICES.

DEMOLITION NOTES

- THE CONTRACTOR SHALL VISIT THE SITE BEFORE SUBMITTING A BID TO OBSERVE THE EXISTING CONDITION AND INSTALLATION.
- WORK IN THE EXISTING BUILDING SHALL BE SCHEDULED WELL IN ADVANCE WITH THE OWNER. WORK SHALL BE PERFORMED AT SUCH TIMES AND UNDER SUCH CONDITIONS AS SUIT THE CONVENIENCE OF THE OWNER. PLAN THE WORK TO MINIMIZE DISRUPTION OF NORMAL OPERATION.
- REMOVE WIRING DEVICES, FIXTURES, COMPONENTS, ELECTRICAL EQUIPMENT, CONDUCTORS, BOXES, AND CONDUITS NOT REQUIRED TO REMAIN IN SERVICE IN REMODELED AREAS WHEN THIS PROJECT IS COMPLETE.
- RECONNECT CIRCUITS TO OTHER PANELBOARDS WHEN REQUIRED TO COMPLETE THE RENOVATION SHOWN.
- REMOVE EXISTING CONDUIT AND WIRE FROM AREAS TO BE REMODELED, BACK TO PANELBOARD, CABINET OR JUNCTION BOX. WHERE SUCH WORK WOULD NOT BE POSSIBLE WITHOUT DISTURBING AREAS NOT BEING RENOVATED, CONSULT WITH THE ARCHITECT PRIOR TO PERFORMING THIS WORK.
- WHERE A CIRCUIT IS INTERRUPTED BY REMOVAL OF A DEVICE OR FIXTURE FROM THAT CIRCUIT, INSTALL WIRE AND CONDUIT AS REQUIRED TO RESTORE SERVICE TO THE REMAINING DEVICES AND FIXTURES ON THAT CIRCUIT.
- LIGHTING FIXTURES, WIRING DEVICES, PANELBOARDS, AND CONDUCTORS REMOVED SHALL BE OFFERED TO THE OWNER. IF HE CHOOSES TO RETAIN THESE ITEMS OR PART OF THESE ITEMS, TURN THEM OVER TO HIM. ITEMS REJECTED BY THE OWNER SHALL BE REMOVED FROM THE PROJECT SITE BY THE CONTRACTOR.



THE CONTRACTOR SHOULD REFER E5.XX SERIES RACEWAY DRAWINGS FOR ALL AUDIO/VISUAL EQUIPMENT ROUGH-IN AND RACEWAY NEEDS. THE ELECTRICAL CONTRACTOR SHALL PROVIDE AUDIO/VIDEO BACKBOXES, CONDUITS, FLOOR BOXES, POWER AND AND RELATED ITEMS AS OUTLINED IN THESE DRAWINGS.

1 SECOND FLOOR PLAN - SYSTEMS - PART A
E3.04 SCALE : 1/8"=1'-0"

628 WASHINGTON AVENUE, SUITE C
OCEAN SPRINGS, MS 39564
PHONE: (228) 742-1975 FAX: (228) 749-9545
EMAIL: CONTACT@ALLREDARCHITECTURALGROUP.COM

allred
ARCHITECTURAL
GROUP

SECOND FLOOR PLAN SYSTEMS - PART A
CS# 108-281 GREENE HALL RENOVATIONS
UNIVERSITY OF SOUTHERN MISSISSIPPI
HATTIESBURG CAMPUS

APPROVED BY	
APPROVED BY	
APPROVED BY	
JOB NUMBER	2014-29
DATE	05-19-2017
REVIEWED	
DESIGNED BY	CAN
CHECKED BY	JDL

05-19-2017
COR#: CHANGE ORDER
REQUEST #2-12152017



SHEET
E3.04R
OF SHEETS

KEYNOTES

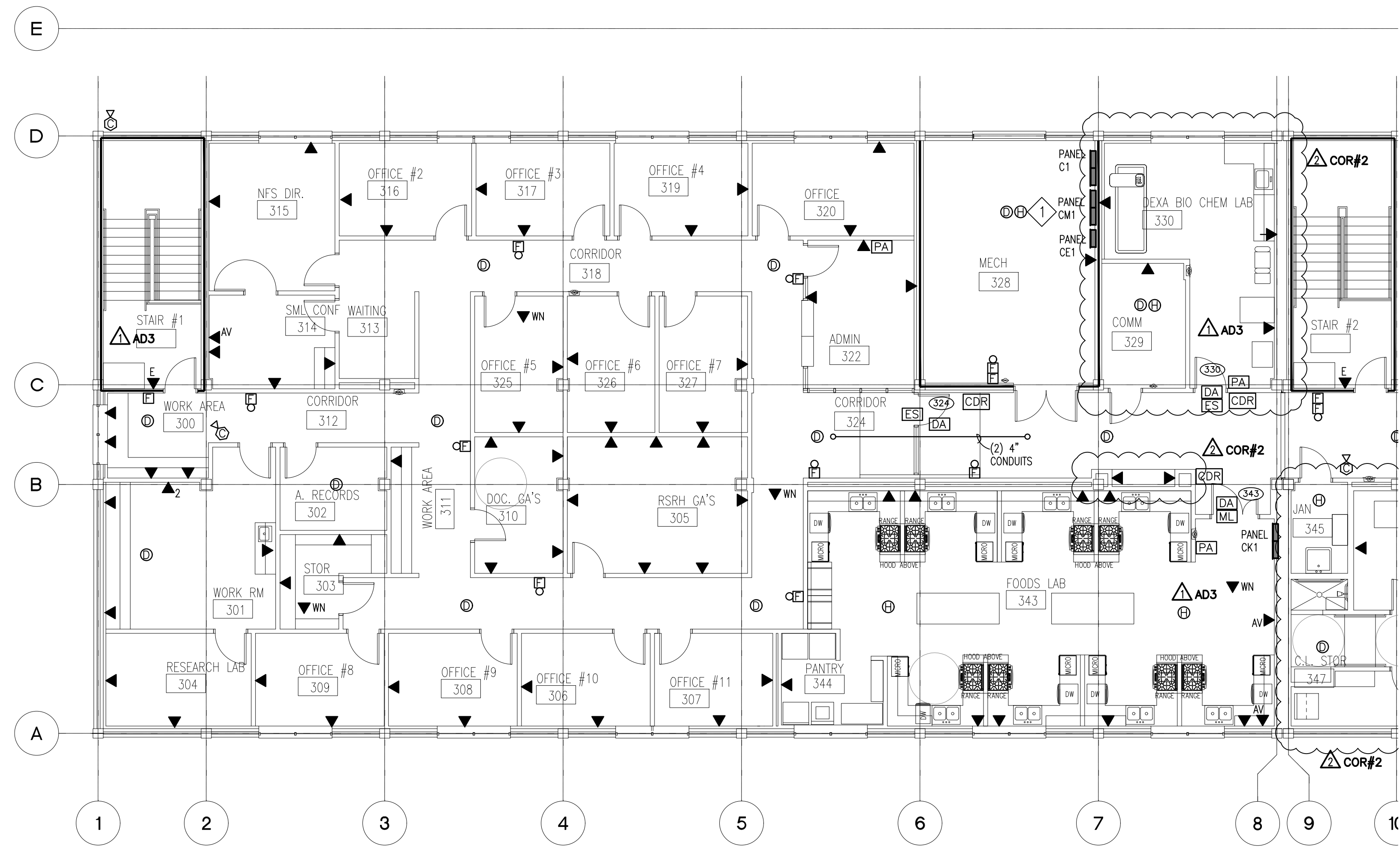
1. HEAT DETECTOR TO CONTROL SOLENOID VALVE ASSOCIATED WITH SPRINKLER SYSTEM. SEE SPECIFICATION SECTION 283111 FOR REQUIREMENTS.

DEMOLITION NOTES

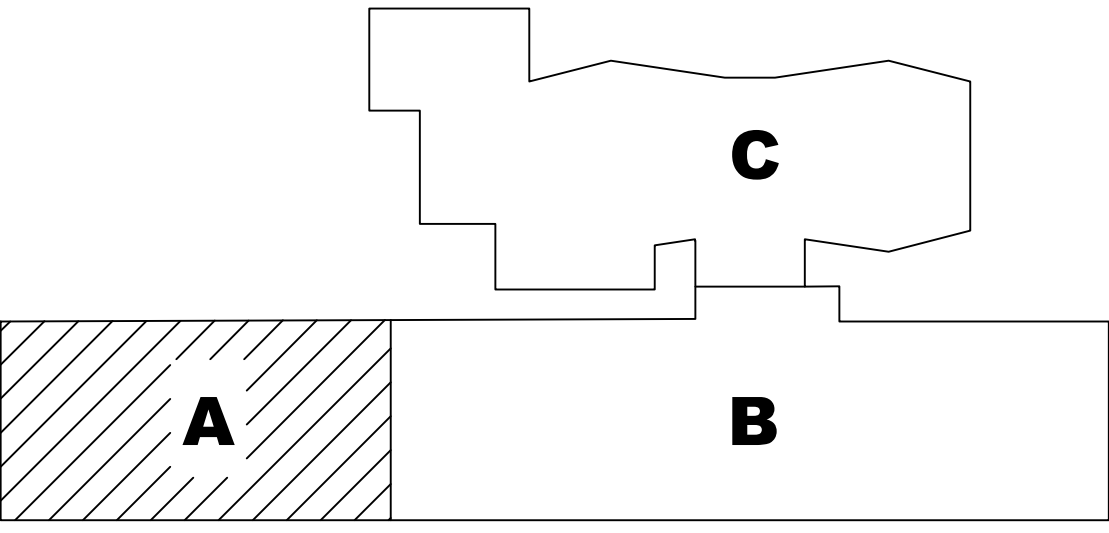
1. THE CONTRACTOR SHALL VISIT THE SITE BEFORE SUBMITTING A BID TO OBSERVE THE EXISTING CONDITION AND INSTALLATION.
2. WORK IN THE EXISTING BUILDING SHALL BE SCHEDULED WELL IN ADVANCE WITH THE OWNER. WORK SHALL BE PERFORMED AT SUCH TIMES AND UNDER SUCH CONDITIONS AS SUIT THE CONVENIENCE OF THE OWNER. PLAN THE WORK TO MINIMIZE DISRUPTION OF NORMAL OPERATION.
3. REMOVE WIRING DEVICES, FIXTURES, COMPONENTS, ELECTRICAL EQUIPMENT, CONDUCTORS, BOXES, AND CONDUITS NOT REQUIRED TO REMAIN IN SERVICE IN REMODELED AREAS WHEN THIS PROJECT IS COMPLETE.
4. RECONNECT CIRCUITS TO OTHER PANELBOARDS WHEN REQUIRED TO COMPLETE THE RENOVATION SHOWN.
5. REMOVE EXISTING CONDUIT AND WIRE FROM AREAS TO BE REMODELED, BACK TO PANELBOARD, CABINET OR JUNCTION BOX. WHERE SUCH WORK WOULD NOT BE POSSIBLE WITHOUT DISTURBING AREAS NOT BEING RENOVATED, CONSULT WITH THE ARCHITECT PRIOR TO PERFORMING THIS WORK.
6. WHERE A CIRCUIT IS INTERRUPTED BY REMOVAL OF A DEVICE OR FIXTURE FROM THAT CIRCUIT, INSTALL WIRE AND CONDUIT AS REQUIRED TO RESTORE SERVICE TO THE REMAINING DEVICES AND FIXTURES ON THAT CIRCUIT.
7. LIGHTING FIXTURES, WIRING DEVICES, PANELBOARDS, AND CONDUCTORS REMOVED SHALL BE OFFERED TO THE OWNER. IF HE CHOOSES TO RETAIN THESE ITEMS OR PART OF THESE ITEMS, TURN THEM OVER TO HIM. ITEMS REJECTED BY THE OWNER SHALL BE REMOVED FROM THE PROJECT SITE BY THE CONTRACTOR.

GENERAL NOTES

1. SEE MECHANICAL DRAWINGS TO CONFIRM DUCT MOUNTED SMOKE DETECTOR LOCATIONS.
2. THE CONTRACTOR SHALL REFER TO E5.XX SERIES RACEWAY DRAWINGS FOR VOICE DATA OUTLETS THAT DEAL DIRECTLY WITH THAT SYSTEM. THE CONTRACTOR IS RESPONSIBLE FOR ALL VOICE DATA DEVICES.



THE CONTRACTOR SHOULD REFER E5.XX SERIES RACEWAY DRAWINGS FOR ALL AUDIO/VISUAL EQUIPMENT ROUGH-IN AND RACEWAY NEEDS. THE ELECTRICAL CONTRACTOR SHALL PROVIDE AUDIO/VIDEO BACKBOXES, CONDUITS, FLOOR BOXES, POWER AND AND RELATED ITEMS AS OUTLINED IN THESE DRAWINGS.



1 THIRD FLOOR PLAN - SYSTEMS - PART A
 E3.06 SCALE : 1/8"=1'-0"

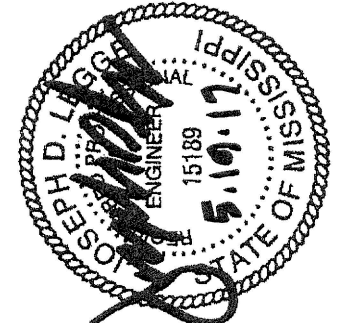
628 WASHINGTON AVENUE, SUITE C
 OCEAN SPRINGS, MS 39564
 PHONE: (228) 742-1975 FAX: (228) 749-9545
 EMAIL: CONTACT@ALLREDARCHITECTURALGROUP.COM

allred
 ARCHITECTURAL
 GROUP

THIRD FLOOR PLAN SYSTEMS - PART A
 CS# 108-281 GREENE HALL RENOVATIONS
 UNIVERSITY OF SOUTHERN MISSISSIPPI
 HATTIESBURG CAMPUS

APPROVED BY	2014-29
DATE	05-19-2017
REVIEWED	
DESIGNED BY	CAN
CHECKED BY	JDL

05-19-2017
 COR#: CHANGE ORDER
 REQUEST #2-12152017



SHEET
 E3.06R
 OF SHEETS

KEYNOTES

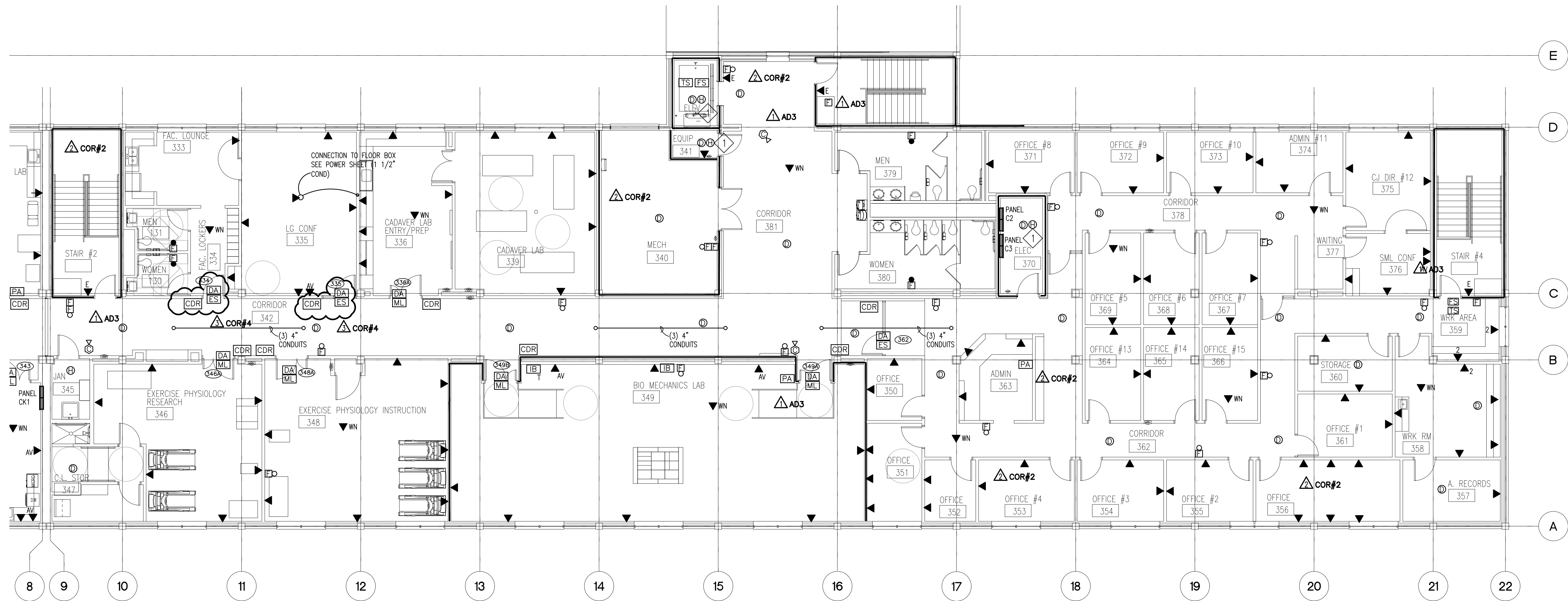
1. HEAT DETECTOR TO CONTROL SOLENOID VALVE ASSOCIATED WITH SPRINKLER SYSTEM. SEE SPECIFICATION SECTION 283111 FOR REQUIREMENTS.

DEMOLITION NOTES

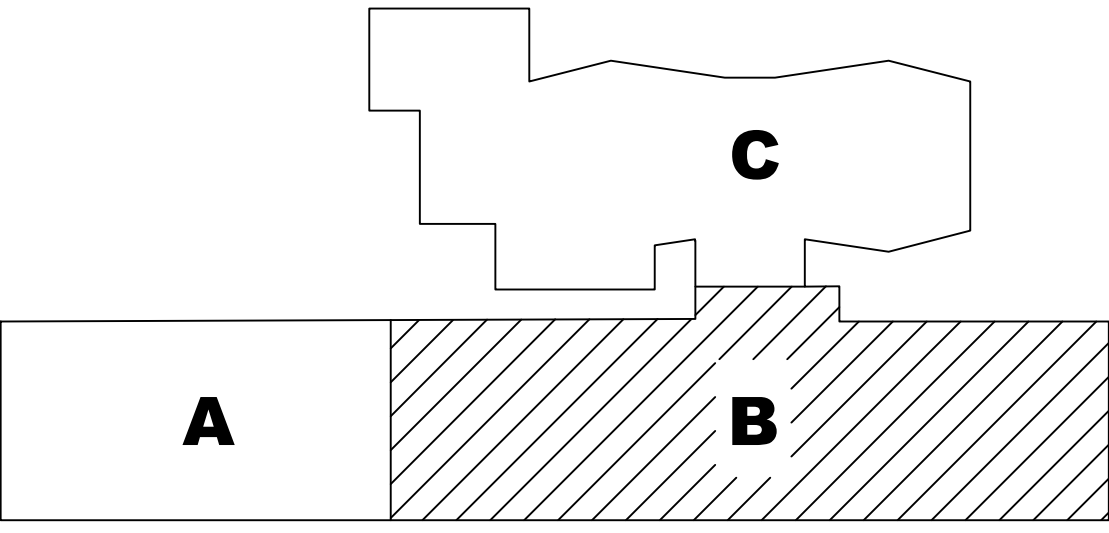
1. THE CONTRACTOR SHALL VISIT THE SITE BEFORE SUBMITTING A BID TO OBSERVE THE EXISTING CONDITION AND INSTALLATION.
2. WORK IN THE EXISTING BUILDING SHALL BE SCHEDULED WELL IN ADVANCE WITH THE OWNER. WORK SHALL BE PERFORMED AT SUCH TIMES AND UNDER SUCH CONDITIONS AS SUIT THE CONVENIENCE OF THE OWNER. PLAN THE WORK TO MINIMIZE DISRUPTION OF NORMAL OPERATION.
3. REMOVE WIRING DEVICES, FIXTURES, COMPONENTS, ELECTRICAL EQUIPMENT, CONDUCTORS, BOXES, AND CONDUITS NOT REQUIRED TO REMAIN IN SERVICE IN REMODELED AREAS WHEN THIS PROJECT IS COMPLETE.
4. RECONNECT CIRCUITS TO OTHER PANELBOARDS WHEN REQUIRED TO COMPLETE THE RENOVATION SHOWN.
5. REMOVE EXISTING CONDUIT AND WIRE FROM AREAS TO BE REMODELED, BACK TO PANELBOARD, CABINET OR JUNCTION BOX. WHERE SUCH WORK WOULD NOT BE POSSIBLE WITHOUT DISTURBING AREAS NOT BEING RENOVATED, CONSULT WITH THE ARCHITECT PRIOR TO PERFORMING THIS WORK.
6. WHERE A CIRCUIT IS INTERRUPTED BY REMOVAL OF A DEVICE OR FIXTURE FROM THAT CIRCUIT, INSTALL WIRE AND CONDUIT AS REQUIRED TO RESTORE SERVICE TO THE REMAINING DEVICES AND FIXTURES ON THAT CIRCUIT.
7. LIGHTING FIXTURES, WIRING DEVICES, PANELBOARDS, AND CONDUCTORS REMOVED SHALL BE OFFERED TO THE OWNER. IF HE CHOOSES TO RETAIN THESE ITEMS OR PART OF THESE ITEMS, TURN THEM OVER TO HIM. ITEMS REJECTED BY THE OWNER SHALL BE REMOVED FROM THE PROJECT SITE BY THE CONTRACTOR.

GENERAL NOTES

1. SEE MECHANICAL DRAWINGS TO CONFIRM DUCT MOUNTED SMOKE DETECTOR LOCATIONS.
2. THE CONTRACTOR SHALL REFER TO ES.XX SERIES RACEWAY DRAWINGS FOR VOICE DATA OUTLETS THAT DEAL DIRECTLY WITH THAT SYSTEM. THE CONTRACTOR IS RESPONSIBLE FOR ALL VOICE DATA DEVICES.



THE CONTRACTOR SHOULD REFER ES.XX SERIES RACEWAY DRAWINGS FOR ALL AUDIO/VISUAL EQUIPMENT ROUGH-IN AND RACEWAY NEEDS. THE ELECTRICAL CONTRACTOR SHALL PROVIDE AUDIO/VIDEO BACKBOXES, CONDUITS, FLOOR BOXES, POWER AND AND RELATED ITEMS AS OUTLINED IN THESE DRAWINGS.



THIRD FLOOR PLAN - SYSTEMS - PART B
 SCALE: 1/8"=1'-0"

628 WASHINGTON AVENUE, SUITE C
 OCEAN SPRINGS, MS 39564
 PHONE: (228) 742-1975 FAX: (228) 749-9545
 EMAIL: CONTACT@ALLREDARCHITECTURALGROUP.COM

allred
 ARCHITECTURAL
 GROUP

THIRD FLOOR PLAN SYSTEMS - PART B
 CS# 108-281 GREENE HALL RENOVATIONS
 UNIVERSITY OF SOUTHERN MISSISSIPPI
 HATTIESBURG CAMPUS

APPROVED BY	
DATE	05-19-2017
REVISION	
DESIGNED BY	CAN
CHECKED BY	JDL

05-19-2017
 COR#2: CHANGE ORDER
 REQUEST #2-12152017



SHEET
 E3.07R
 OF SHEETS