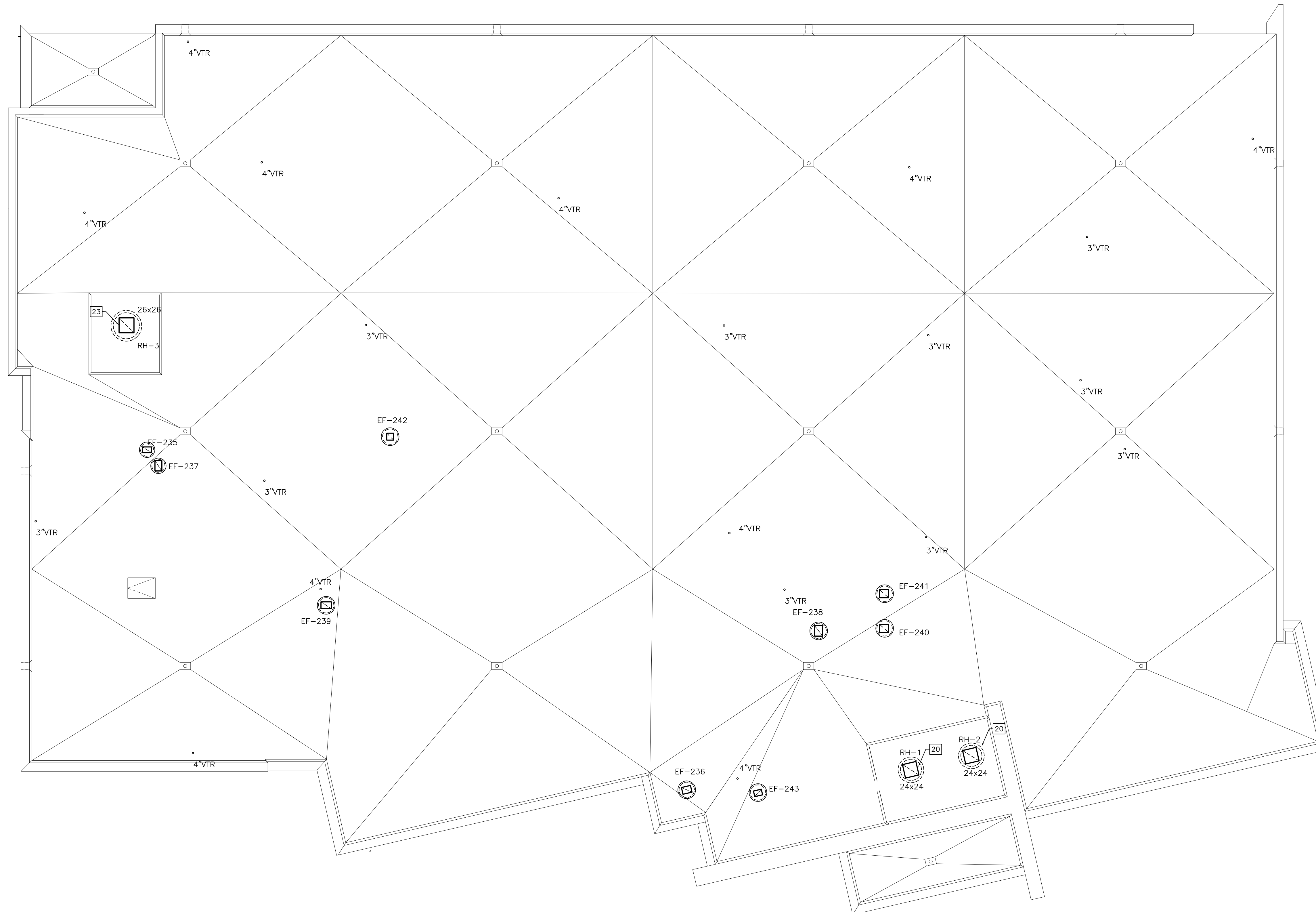
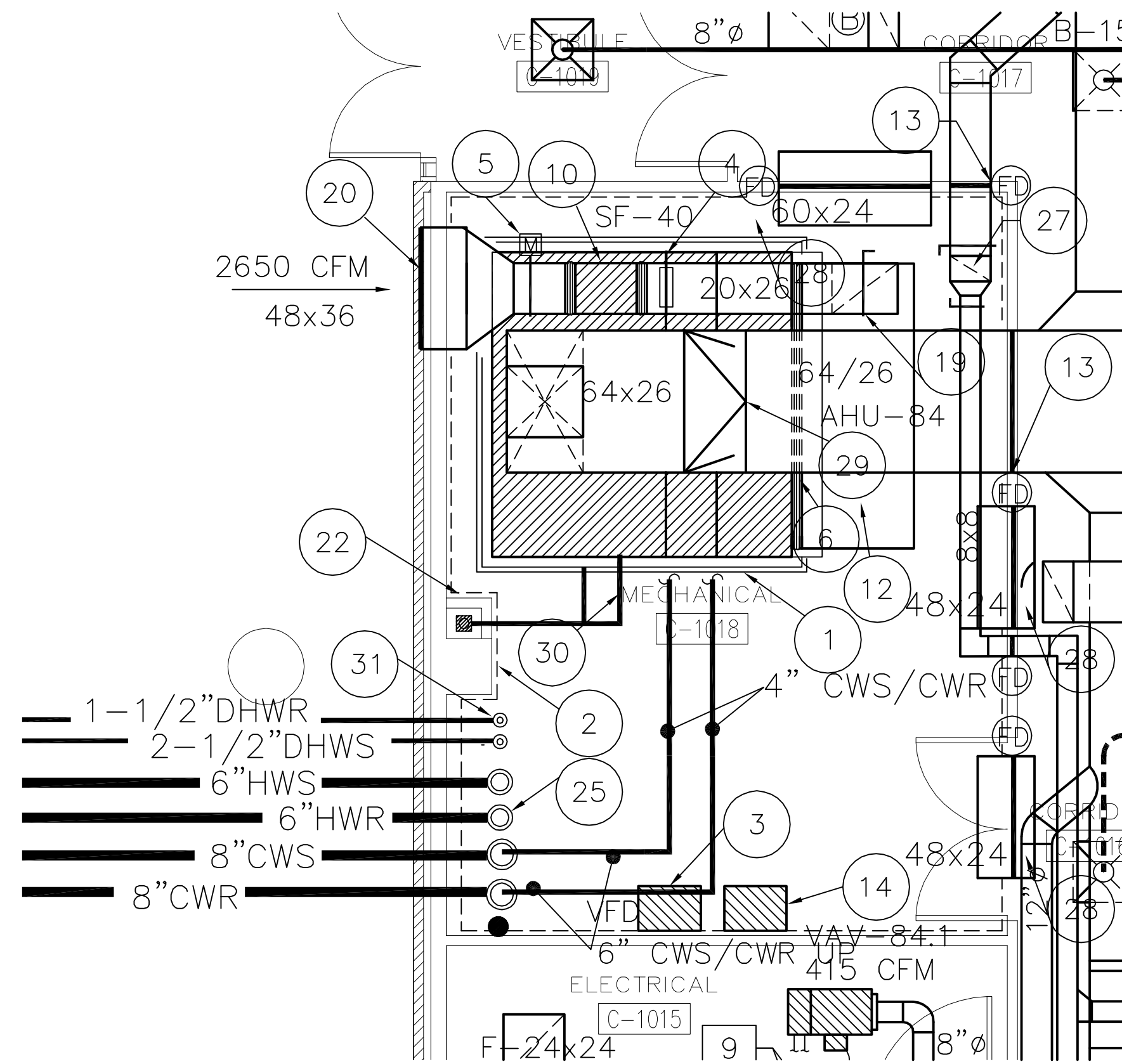


*REFER TO SHEET M1.0
FOR MECHANICAL PLAN
NOTES.

1 FOURTH FLOOR MECHANICAL PLAN
SCALE: 1/8" = 1'-0"

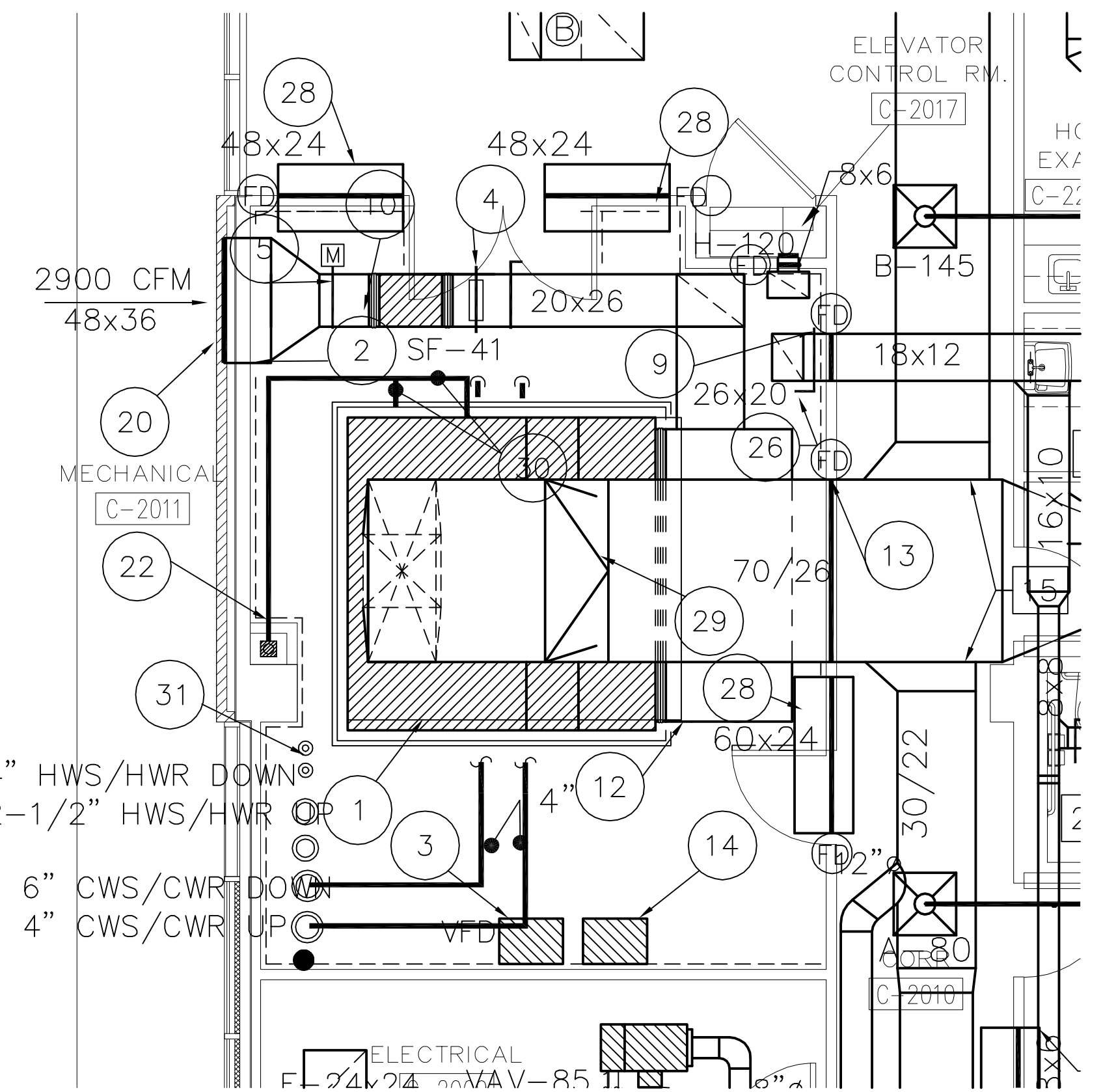



1 MECHANICAL & PLUMBING ROOF PLAN
 SCALE: 1/8" = 1'-0"

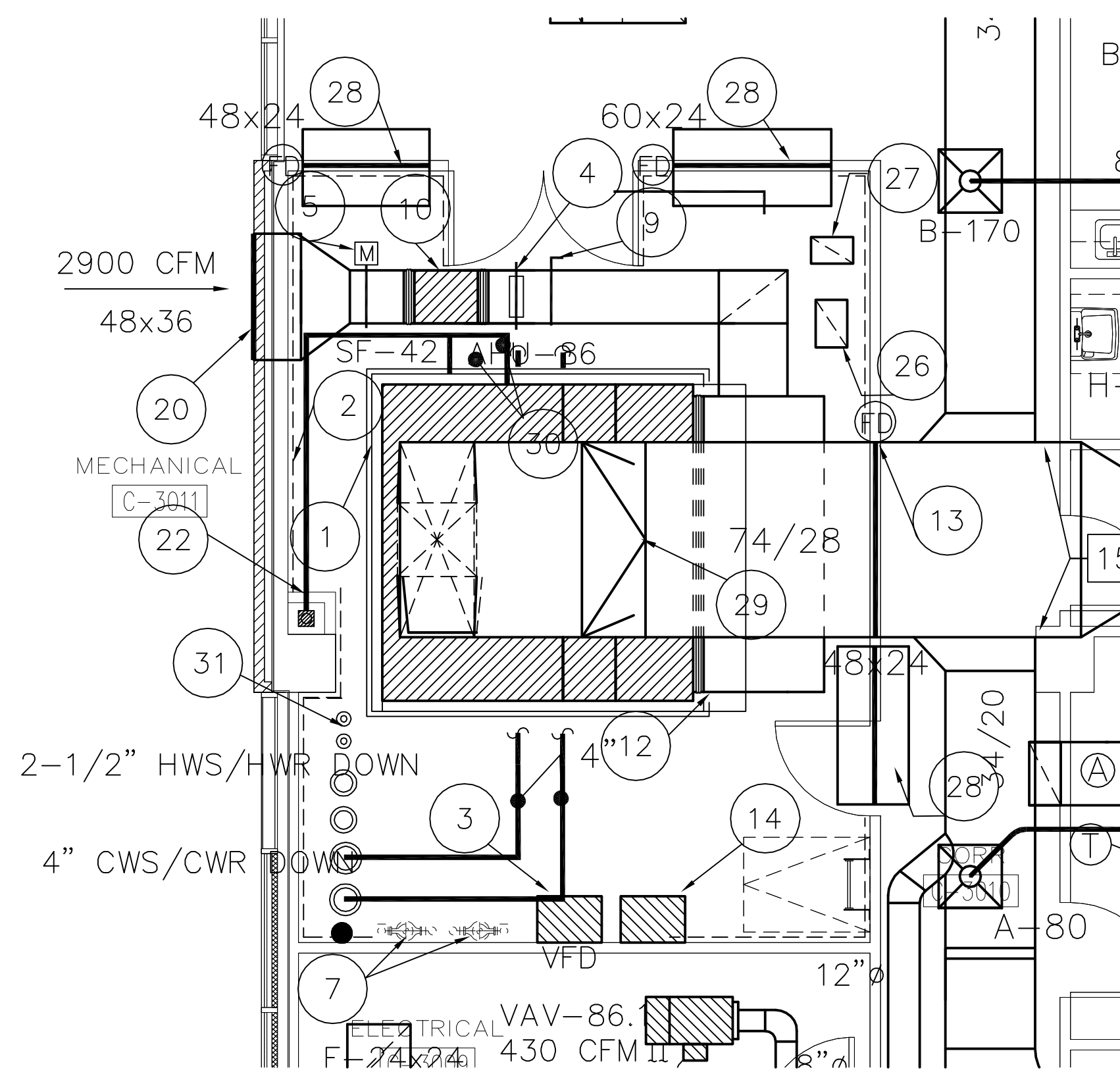


1 ENLARGED MECHANICAL ROOM C-1018
Scale: 1/4"=1'-0"

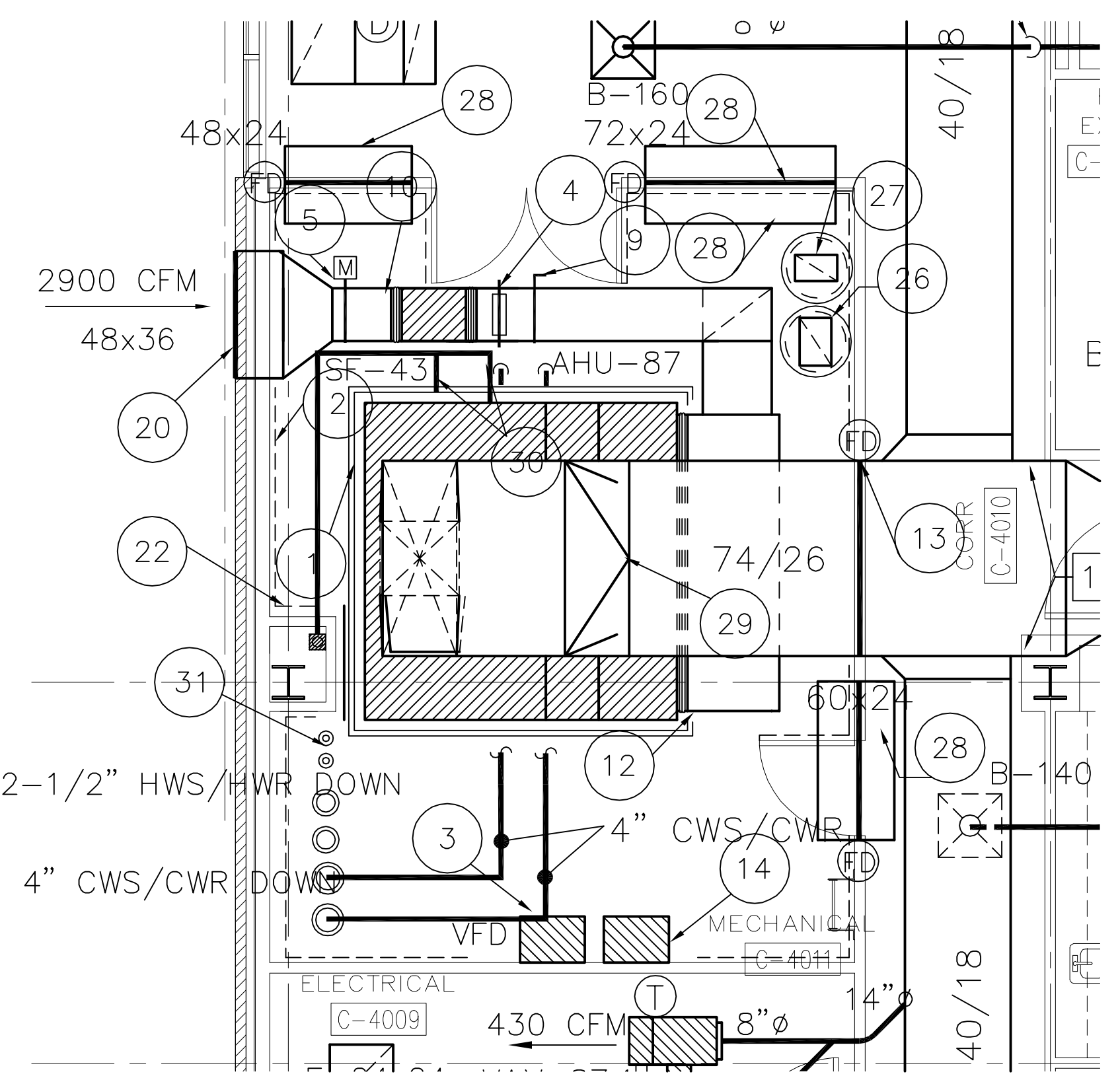
- 1 4" HIGH AUXILIARY STAINLESS STEEL DRAIN PAN (PIPE 2" RIGID COPPER DRAIN LINE TO FLOOR DRAIN), ON 4" HIGH CONCRETE HOUSEKEEPING PAD, MINIMUM 6" CLEARANCE ALL AROUND.
- 2 2" THICK FIBERGLASS SOUND BOARD WITH PERFORATED GLASS FABRIC FACING, LOCATE FACING EXPOSED TOWARD ROOM.
- 3 VARIABLE SPEED DRIVE, TYPICAL.
- 4 BACKDRAFT DAMPER, TYPICAL.
- 5 MOTORIZED DAMPER, TYPICAL.
- 6 FLEXIBLE CONNECTION, TYPICAL.
- 7 BOOSTER PUMPS REFER TO PLUMBING PLAN, DETAIL, AND SCHEDULE.
- 8 NOT USED.
- 9 MANUAL VOLUME DAMPER, ADJUSTABLE AND LOCKABLE, TYPICAL.
- 10 INLINE OUTSIDE AIR FAN, REFER TO TYPICAL DETAIL.
- 11 TURNING VANES, TYPICAL ALL TURNS 30-DEGREES AND GREATER.
- 12 RETURN AIR PLENUM, INTERNALLY INSULATED, CONNECT TO UNIT WITH FLEXIBLE CONNECTION, FULL SIZE OF UNIT OPENING, LENGTH AS REQUIRED. ALL JOINTS AND SEAMS TO BE SEALED AIR TIGHT.
- 13 CONTRACTOR TO PROVIDE A 2-HR FIRE DAMPER AT DUCT PENETRATION THRU FIRE RATED WALL.
- 14 EMS CONTROL PANEL, PROVIDE 120 VOLT DEDICATED CIRCUIT.
- 15 NOT USED.
- 16 FIRE DAMPER (2 HR. RATED) AT FLOOR PENETRATION.
- 17 NOT USED.
- 18 NOT USED.
- 19 MANUAL VOLUME DAMPER, LOCKABLE AND ADJUSTABLE, LOCATE IN DUCT DROP.
- 20 WEATHERPROOF LOUVER EQUIPPED WITH BIRDSCREEN, PROVIDE DUCT EXTENSION THRU WALL AND TRANSITION TO DUCT AS REQUIRED. SEAL ALL AROUND WATER TIGHT, LOUVER TO BE PAINTED, COLOR SELECTION BY ARCH.
- 21 NOT USED.
- 22 CONTRACTOR TO FUR OUT WALL HERE 14"x14" RUN UP TO DECK ROUTE CONDENSATE THRU WALL AND TURN DOWN AT FLOOR DRAIN, PROVIDE 12"x12" ACCESS PANEL FOR SERVICING THE FLOOR DRAIN.
- 23 NOT USED.
- 24 NOT USED.
- 25 CHILLED WATER AND HOT WATER LINES. REFER TO MECHANICAL HYDRONIC PIPING PLAN FOR CONTINUATION AND SIZE.
- 26 18X12 RECTANGULAR DUCT ROUTED UP TO ROOF MOUNTED EXHAUST FAN EF-237 ON PRE-FABRICATED ROOF CURB, RE-TYPICAL DETAIL. PROVIDE 2 HOUR RATED FIRE DAMPER AT ALL FLOOR PENETRATIONS. IF THE FIRE DAMPER IS LOCATED IN A CHASE WHICH IS WALLED FLOOR TO FLOOR PROVIDE ACCESS PANEL IN THE CHASE ACCESSIBLE FROM THE CEILING SPACE TO ACCESS THE FIRE DAMPER.
- 27 16X14 RECTANGULAR EXHAUST DUCT ROUTED UP TO ROOF MOUNTED EXHAUST FAN (EF-235) ON PRE-FABRICATED ROOF CURB, RE: TYPICAL DETAIL. PROVIDE 2 HOUR RATED FIRE DAMPER AT ALL FLOOR PENETRATIONS.
- 28 RETURN AIR DUCT SLEEVE REFER TO PLANS FOR SIZING EXTEND DUCT 24" ON EACH SIDE OF WALL, MOUNT AS HIGH AS POSSIBLE, PROVIDE 4" SOUND ATTENUATOR (DYNASONIC RA OR APPROVED EQUAL), PROVIDE 4" SOUND ATTENUATOR (DYNASONIC RA OR APPROVED EQUAL), PROVIDE 2 HR RATED UL LISTED FIRE DAMPER IN AT DUCT PENETRATION THROUGH WALL.
- 29 RECTANGULAR TO OVAL TRANSITION, LENGTH AS RIGID.
- 30 2" CONDENSATE LINE (COPPER, INSULATED), ROUTE TO NEAREST FLOOR DRAIN AS SHOWN ON PLAN.
- 31 DOMESTIC HOT WATER REFER TO PLUMBING FOR ROUTING.



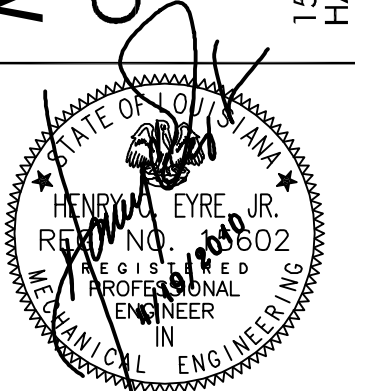
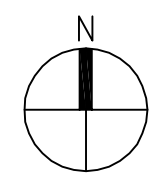
2 ENLARGED MECHANICAL ROOM C-2011
Scale: 1/4"=1'-0"

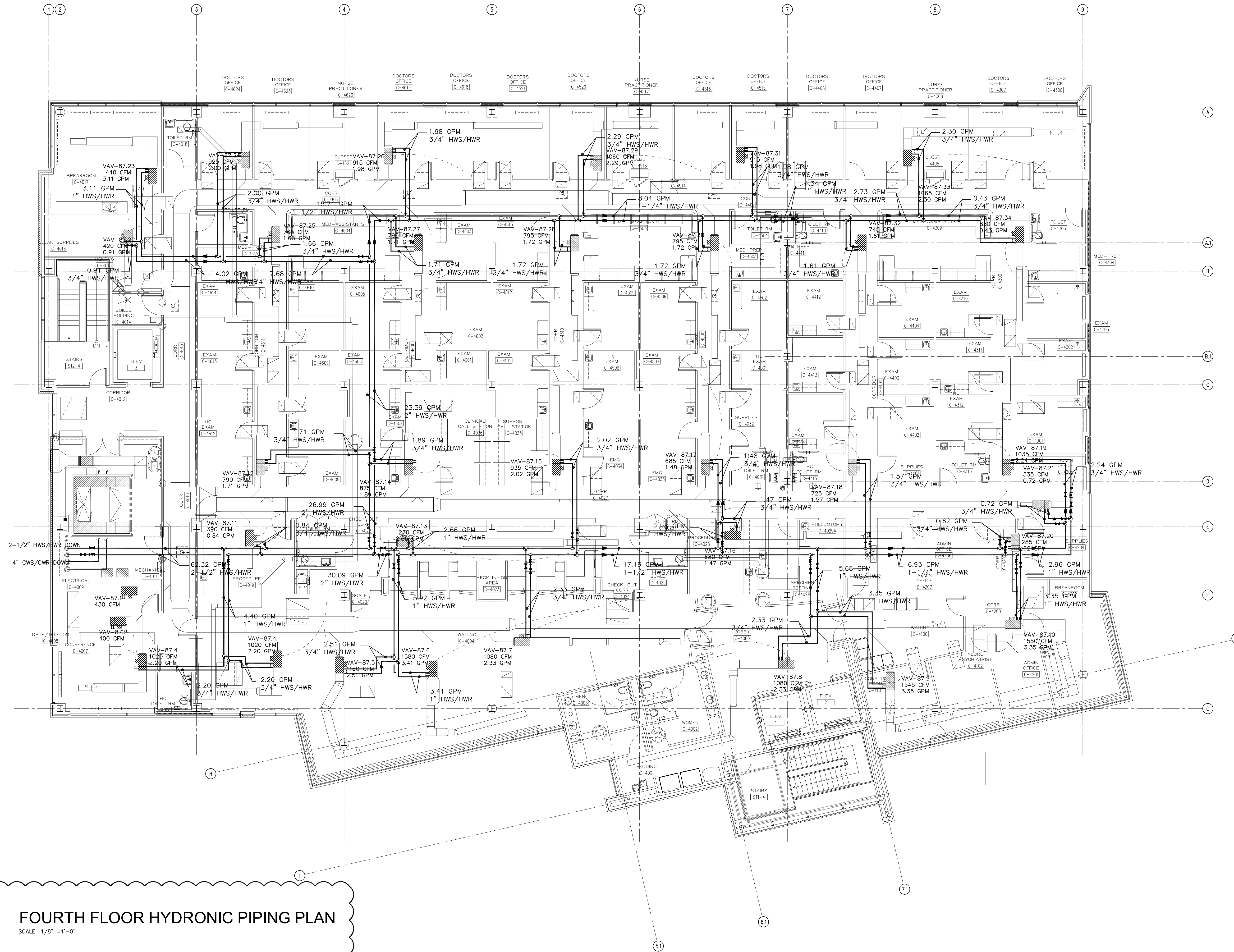


3 ENLARGED MECHANICAL ROOM C-3011
Scale: 1/4"=1'-0"



4 ENLARGED MECHANICAL ROOM C-4011
Scale: 1/4"=1'-0"

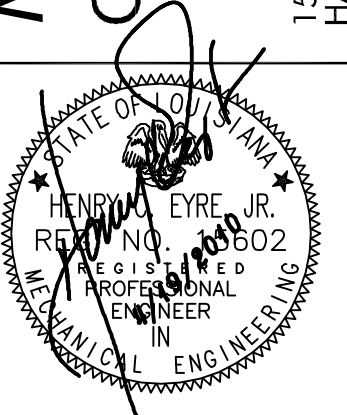




1 FOURTH FLOOR HYDRONIC PIPING PLAN
SCALE: 1/8" = 1'-0"

MEDICAL CLINIC BUILDING
GOLD LEAF HOLDINGS

15813 PAUL VEGA M.D. DRIVE
HAMMOND, LOUISIANA 70403



washer hill lipscomb cabanis
architecture, llc
copyright 2007

1744 oakdale dr. baton rouge, la
t 225.767.1530 f 225.767.0018

Construction Documents
05-076G
18 May 2010
ASI #2

AIR HANDLING UNIT SCHEDULE – CHILLED WATER

UNIT NO.	LOCATION	SERVICE	FAN DATA			MOTOR DATA			COOLING COIL DATA										CONDENSATE LINE SIZE (RIGID COPPER)	UNIT WEIGHT (LBS.)	MAXIMUM AIR UNIT HEIGHT (IN.)	REMARKS					
			TOTAL C.F.M.	O.A. C.F.M.	EXT. S.P.	H.P.	VOLTS	PH	R.P.M.	MAX. FACE VEL.	AIR P.D. I.W.G.	SENS. CAP. M.B.H.	TOTAL CAP. M.B.H.	E.A.T.:F D.B.	W.B.	L.A.T.:F D.B.	W.B.	MIN. ROWS					MAXIMUM FINS/FOOT	G.P.M.	WATER ΔT FT.	WTR. TEMP. ENT.:F	LVG.:F
AHU-84	MECHANICAL RM C-1018	SEE DRAWINGS	28599	2650	3.0"	30	460	3/60	1800	500	0.57	657.34	804.50	76.9	64.6	56.01	55.31	8	99	160.34	2.36	45.0	55.0	2"	2,805 LBS	3600	TRANE MODEL MCC #57, JOHNSON CONTROLS, MCQUAY OR APPROVED EQUAL
AHU-85	MECHANICAL RM C-2011	SEE DRAWINGS	30087	2900	3.0"	40	460	3/60	1800	500	0.654	695.73	861.80	76.90	64.70	55.89	55.24	8	103	171.76	2.69	45.0	55.0	2"	1,595 LBS	4000	TRANE MODEL MCC #57, JOHNSON CONTROLS, MCQUAY OR APPROVED EQUAL
AHU-86	MECHANICAL RM C-3011	SEE DRAWINGS	31930	2900	3.0"	40	460	3/60	1800	500	0.531	749.95	922.10	76.80	64.50	56.28	55.32	8	90	183.78	3.24	45.0	55.0	2"	2,100 LBS	4500	TRANE MODEL MCC #66, JOHNSON CONTROLS, MCQUAY OR APPROVED EQUAL
AHU-87	MECHANICAL RM C-4011	SEE DRAWINGS	31310	2900	3.0"	40	460	3/60	1800	500	0.531	749.95	922.10	76.80	64.50	56.28	55.32	8	90	183.78	3.24	45.0	55.0	2"	2,100 LBS	4500	TRANE MODEL MCC #66, JOHNSON CONTROLS, MCQUAY OR APPROVED EQUAL

- ALL AIR HANDLING UNITS SHALL BE EQUIPPED WITH VIBRATION ISOLATORS (SPRING-TYPE).
- EXT S.P. DOES NOT INCLUDE DIRTY FILTER LOSS.
- ALL UNITS SHALL BE DOUBLEWALL CONSTRUCTION.
- PROVIDE VARIABLE SPEED DRIVES FOR ALL VAV AIR HANDLING UNITS.
- COORDINATE FAN CURVE WITH MECHANICAL ENGINEER PRIOR TO SUBMITTING SHOP DRAWINGS.
- PROVIDE DOUBLEWALL 304 STAINLESS STEEL DRAIN PANS ALL WELDED SEAMS.
- SPACE IN MECHANICAL ROOMS LIMITED. REFER TO DRAWINGS FOR EXACT SIZE OF MECHANICAL UNITS.
- FULL SUBMITTALS TO BE PROVIDED TO MECHANICAL ENGINEER IN ORDER FOR PRIOR APPROVAL TO BE AWARDED.

AIR DISTRIBUTION DEVICE SCHEDULE

MARK	MANUFACTURER	MODEL NO.	C.F.M.	SUPPLY	RETURN	EXHAUST	O.A.	REGISTER	GRILLE	DIFFUSER	DOOR GR	LOUVER	CEILING	WALL/DR	EXPOSED	NECK SIZE	FACE SIZE	MATERIAL	FINISH	O.B.D.	REMARKS
A	PRICE	SERIES ASCDA	SEE DWG.	●						●			●			6"ø	24x24	ALUMINUM	WHITE	YES	ADJUSTABLE
B	PRICE	SERIES ASCDA	SEE DWG.	●						●			●			8"ø	24x24	ALUMINUM	WHITE	YES	ADJUSTABLE
C	PRICE	SERIES ASCDA	SEE DWG.	●						●			●			10"ø	24x24	ALUMINUM	WHITE	YES	ADJUSTABLE
D	PRICE	SERIES ASCDA	SEE DWG.	●						●			●			12"ø	24x24	ALUMINUM	WHITE	YES	ADJUSTABLE
E	PRICE	SERIES ASCDA	SEE DWG.	●						●			●			6"ø	12x12	ALUMINUM	WHITE	YES	ADJUSTABLE
F	PRICE	SERIES 630	SEE DWG.	●						●			●			24x24	24x24	ALUMINUM	ALUMINUM	NO	LOUVER FACE TYPE, 3/4" BLADE SPACING
G	PRICE	SERIES 630	SEE DWG.	●						●			●			24x48	24x48	ALUMINUM	ALUMINUM	NO	LOUVER FACE TYPE, 3/4" BLADE SPACING
H	PRICE	SERIES 80	SEE DWG.	●	●								●			12x12	12x12	ALUMINUM	WHITE	NO	EGGCRATE TYPE
I	PRICE	SERIES 80	SEE DWG.	●	●								●			24x24	24x24	ALUMINUM	WHITE	NO	EGGCRATE TYPE
J	PRICE	SERIES SDA1100	SEE DWG.	●						●			●			2 SLOTS @ 1" SPACING		ALUMINUM	WHITE	YES	LAY-IN CEILING TYPE, ALL SLOT DIFFUSERS TO COME WITH FACTORY INSTALLED INTERNALLY INSULATED SHEET METAL PLENUMS WITH SLOPED SHOULDERS
K	PRICE	SERIES AMDA	SEE DWG.	●						●			●			12x12	17x17	ALUMINUM	WHITE	YES	ADJUSTABLE, W/ BEVELED FRAME
L	PRICE	SERIES AMDA	SEE DWG.	●						●			●			15x15	20x20	ALUMINUM	WHITE	YES	ADJUSTABLE, W/ BEVELED FRAME

- REFER TO ARCH FOR CEILING TYPE, CONTRACTOR TO PROVIDE AND INSTALL PLASTER FRAME FOR GYPSUM BOARD CEILING INSTALLATION.
- ALL GRILLES, REGISTERS, DIFFUSERS, ETC. TO COME WITH WHITE FINISH UNLESS OTHERWISE SPECIFIED BY ARCHITECT IN FIELD DURING CONSTRUCTION. FINISH SHOULD BE SUITABLE FOR PAINTING WITHOUT ANY ADDITIONAL PREPARATION.
- NOT ALL MARKS NECESSARILY FOUND ON THE PLANS.
- ALL LINEAR DIFFUSERS TO COME WITH FACTORY INSTALLED INTERNALLY LINED PLENUMS WITH SLOPED SHOULDERS ON REAR.
- ALL GRILLES SHALL BE ALUMINUM CONSTRUCTION UNLESS OTHERWISE NOTED ON DRAWINGS.
- MANUFACTURERS MODEL NUMBER REPRESENTS QUALITY OF EQUIPMENT TO BE INSTALLED, THIS PROJECT.
- NOT USED.
- PERFORMANCE DATA FOR ALL GRILLES, LINEARS, DIFFUSERS, ETC. MUST BE SUBMITTED TO ENGINEER BEFORE PRIOR APPROVAL IS AWARDED.
- MOUNT ALL LINEAR DIFFUSERS (SUPPLY & RETURN) WITH CONCEALED FASTENERS.
- APPROVED MANUFACTURERS: TITUS, NAILOR, METALAIR

PUMP SCHEDULE

MARK	SERVICE	GPM	TDH (FT.)	RPM	HP	ELECTRIC	REMARKS
CWP-6,7	OCD BLDG.	500	80.0	1750	20.0	480/3/60	EXISTING PUMPS
CWP-8,9	CLINIC BLDG.	700	40.0	1760	15.0	480/3/60	TACO MODEL KS 6009 OR APPROVED EQUAL, VERTICAL INLINE
HWP-8,9	OCD BLDG.	170	90.0	1750	15.0	480/3/60	EXISTING PUMPS
HWP-10,11	CLINIC BLDG	260	50.0	1760	7.5	480/3/60	TACO MODEL KV 3007, OR APPROVED EQUAL, VERTICAL INLINE

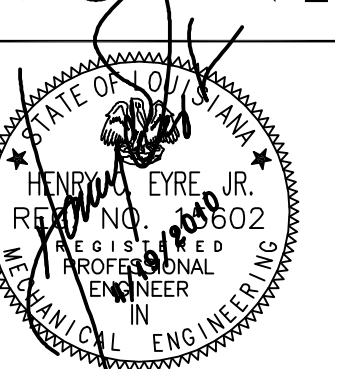
EXHAUST AND SUPPLY FAN SCHEDULE

UNIT NO.	LOCATION	SERVICE	C.F.M.	E.S.P. I.W.G.	TYPE	DRIVE	FAN R.P.M.	MAX. SONES	MOTOR DATA			REMARKS	CONTROLLED BY	
									H.P.	VOLTS	PH			
EF-235	ROOF	1ST FLOOR	570	0.5"	DOWNBLAST	BELT	1482	8.8	1/6	120	1/60	1725	GREENHECK MODEL GB-081-6 OR APPROVED EQUAL	INTERCONNECT WITH AHU-84
EF-236	ROOF	1ST FLOOR	675	0.6"	DOWNBLAST	BELT	1377	8.8	1/4	120	1/60	1725	GREENHECK MODEL GB-091-4 OR APPROVED EQUAL	INTERCONNECT WITH AHU-84
EF-237	ROOF	2ND FLOOR	825	0.5"	DOWNBLAST	BELT	1458	9.8	1/4	120	1/60	1725	GREENHECK MODEL GB-091-4 OR APPROVED EQUAL	INTERCONNECT WITH AHU-85
EF-238	ROOF	2ND FLOOR	1365	0.5"	DOWNBLAST	BELT	819	7.9	1/4	120	1/60	1725	GREENHECK MODEL GB-121-4 OR APPROVED EQUAL	INTERCONNECT WITH AHU-85
EF-239	ROOF	3RD FLOOR	750	0.35"	DOWNBLAST	BELT	1282	8.6	1/4	120	1/60	1725	GREENHECK MODEL GB-161-4 OR APPROVED EQUAL	INTERCONNECT WITH AHU-86
EF-240	ROOF	3RD FLOOR	900	0.35"	DOWNBLAST	BELT	1443	10.1	1/4	120	1/60	1725	GREENHECK MODEL GB-091-4 OR APPROVED EQUAL	INTERCONNECT WITH AHU-86
EF-241	ROOF	4TH FLOOR	525	0.25"	DOWNBLAST	BELT	894	3.4	1/4	120	1/60	1725	GREENHECK MODEL GB-101-4 OR APPROVED EQUAL	INTERCONNECT WITH AHU-87
EF-242	ROOF	4TH FLOOR	450	0.25"	DOWNBLAST	BELT	846	2.9	1/4	120	1/60	1725	GREENHECK MODEL GB-101-4 OR APPROVED EQUAL	INTERCONNECT WITH AHU-87
EF-243	ROOF	4TH FLOOR	300	0.25"	DOWNBLAST	BELT	799	2.2	1/4	120	1/60	1725	GREENHECK MODEL GB-101-4 OR APPROVED EQUAL	INTERCONNECT WITH AHU-87
SF-40	ROOM C-1018	AHU-84	2650	0.25"	INLINE	BELT	2415	26	1.5	460	3/60	1725	GREENHECK MODEL BSQ-130-15 OR APPROVED EQUAL	INTERCONNECT WITH AHU-84
SF-41	ROOM C-2011	AHU-85	2900	0.25"	INLINE	BELT	2227	25	1.5	460	3/60	1725	GREENHECK MODEL BSQ-130-15 OR APPROVED EQUAL	INTERCONNECT WITH AHU-85
SF-42	ROOM C-3011	AHU-86	2900	0.25"	INLINE	BELT	1504	25	1.5	460	3/60	1725	GREENHECK MODEL BSQ-130-15 OR APPROVED EQUAL	INTERCONNECT WITH AHU-86
SF-43	ROOM C-4011	AHU-87	2900	0.25"	INLINE	BELT	1504	25	1.5	460	3/60	1725	GREENHECK MODEL BSQ-130-15 OR APPROVED EQUAL	INTERCONNECT WITH AHU-87

- PROVIDE ALL EXHAUST FANS WITH BACKDRAFT DAMPERS AND INTERGAL DISCONNECTS.
- CO-ORDINATE WITH ELECTRICAL CONTRACTOR ON CONNECTION OF FAN, REFER TO SCHEDULES.
- PROVIDE SPEED CONTROLLERS FOR ALL DIRECT DRIVE FANS.
- PROVIDE PRE-FABRICATED ROOF CURBS FOR ALL EXHAUST FANS RE: ROOF PLAN FOR EXACT LOCATION.
- PROVIDE ALL SUPPLY FANS WITH WASHABLE ALUMINUM FILTERS
- ALL FANS SHALL BE ALL ALUMINUM CONSTRUCTION (FAN HOUSING, ETC.).
- MANUFACTURERS MODEL NUMBER REPRESENTS QUALITY OF EQUIPMENT TO BE INSTALLED, THIS PROJECT.
- ALL SUPPLY FAN MOTORS SHALL BE RATED FOR USE WITH VARIABLE FREQUENCY DRIVES.
- APPROVED MANUFACTURERS: LOREN COOK, PENN/BARRY
- ALL SUPPLY FANS TO HAVE TEAO ENCLOSURE.



MEDICAL CLINIC BUILDING
GOLD LEAF HOLDINGS
 15813 PAUL VEGA M.D. DRIVE
 HAMMOND, LOUISIANA 70403



washer hill lipscomb cabanis
 architecture, llc
 copyright 2007

1744 oakdale dr baton rouge, la
 t 225.767.1530 f 225.767.0018

Construction Documents

05-076G

18 May 2010

ASI #2

VAV UNIT SCHEDULE--CONTINUED

VAV SECTION			HEATING SECTION								REMARKS
UNIT NUMBER	INLET SIZE	COOLING CFM	MAX. P.D.	MIN. % CFM SET POINT	MBH HEATING	GPM	EWT/LWT	ELECTRIC SERVICE	E.A.T. D.B.	L.A.T. D.B.	
VAV-87.1	8"φ	430	0.50"	50%	0.0	0.00	180/160	115/1/60	55.00	95.00	PRICE MODEL SDV OR APPROVED EQUAL
VAV-87.2	8"φ	400	0.50"	50%	0.0	0.00	180/160	115/1/60	55.00	95.00	PRICE MODEL SDV OR APPROVED EQUAL
VAV-87.3	12"φ	1020	0.50"	50%	22.0	2.20	180/160	115/1/60	55.00	95.00	PRICE MODEL SDV OR APPROVED EQUAL
VAV-87.4	12"φ	1020	0.50"	50%	22.0	2.20	180/160	115/1/60	55.00	95.00	PRICE MODEL SDV OR APPROVED EQUAL
VAV-87.5	12"φ	1160	0.50"	50%	25.1	2.51	180/160	115/1/60	55.00	95.00	PRICE MODEL SDV OR APPROVED EQUAL
VAV-87.6	14"φ	1580	0.50"	50%	34.1	3.41	180/160	115/1/60	55.00	95.00	PRICE MODEL SDV OR APPROVED EQUAL
VAV-87.7	12"φ	1080	0.50"	50%	23.3	2.33	180/160	115/1/60	55.00	95.00	PRICE MODEL SDV OR APPROVED EQUAL
VAV-87.8	12"φ	1080	0.50"	50%	23.3	2.33	180/160	115/1/60	55.00	95.00	PRICE MODEL SDV OR APPROVED EQUAL
VAV-87.9	12"φ	1215	0.50"	50%	26.2	2.62	180/160	115/1/60	55.00	95.00	PRICE MODEL SDV OR APPROVED EQUAL
VAV-87.10	14"φ	1550	0.50"	50%	33.5	3.35	180/160	115/1/60	55.00	95.00	PRICE MODEL SDV OR APPROVED EQUAL
VAV-87.11	8"φ	390	0.50"	50%	8.4	0.84	180/160	115/1/60	55.00	95.00	PRICE MODEL SDV OR APPROVED EQUAL
VAV-87.12	10"φ	790	0.50"	50%	17.1	1.71	180/160	115/1/60	55.00	95.00	PRICE MODEL SDV OR APPROVED EQUAL
VAV-87.13	12"φ	1230	0.50"	50%	26.6	2.66	180/160	115/1/60	55.00	95.00	PRICE MODEL SDV OR APPROVED EQUAL
VAV-87.14	10"φ	875	0.50"	50%	18.9	1.89	180/160	115/1/60	55.00	95.00	PRICE MODEL SDV OR APPROVED EQUAL
VAV-87.15	10"φ	935	0.50"	50%	20.2	2.02	180/160	115/1/60	55.00	95.00	PRICE MODEL SDV OR APPROVED EQUAL
VAV-87.16	8"φ	680	0.50"	50%	14.7	1.47	180/160	115/1/60	55.00	95.00	PRICE MODEL SDV OR APPROVED EQUAL
VAV-87.17	8"φ	685	0.50"	50%	14.8	1.48	180/160	115/1/60	55.00	95.00	PRICE MODEL SDV OR APPROVED EQUAL
VAV-87.18	10"φ	725	0.50"	50%	15.7	1.57	180/160	115/1/60	55.00	95.00	PRICE MODEL SDV OR APPROVED EQUAL
VAV-87.19	12"φ	1035	0.50"	50%	22.4	2.24	180/160	115/1/60	55.00	95.00	PRICE MODEL SDV OR APPROVED EQUAL
VAV-87.20	6"φ	285	0.50"	50%	6.2	0.62	180/160	115/1/60	55.00	95.00	PRICE MODEL SDV OR APPROVED EQUAL
VAV-87.21	8"φ	335	0.50"	50%	7.2	0.72	180/160	115/1/60	55.00	95.00	PRICE MODEL SDV OR APPROVED EQUAL
VAV-87.22	8"φ	420	0.50"	50%	9.1	0.91	180/160	115/1/60	55.00	95.00	PRICE MODEL SDV OR APPROVED EQUAL
VAV-87.23	14"φ	1440	0.50"	50%	31.1	3.11	180/160	115/1/60	55.00	95.00	PRICE MODEL SDV OR APPROVED EQUAL
VAV-87.24	10"φ	925	0.50"	50%	20.0	2.00	180/160	115/1/60	55.00	95.00	PRICE MODEL SDV OR APPROVED EQUAL
VAV-87.25	10"φ	740	0.50"	50%	16.0	1.60	180/160	115/1/60	55.00	95.00	PRICE MODEL SDV OR APPROVED EQUAL
VAV-87.26	10"φ	915	0.50"	50%	19.8	1.98	180/160	115/1/60	55.00	95.00	PRICE MODEL SDV OR APPROVED EQUAL
VAV-87.27	10"φ	790	0.50"	50%	17.1	1.71	180/160	115/1/60	55.00	95.00	PRICE MODEL SDV OR APPROVED EQUAL
VAV-87.28	10"φ	795	0.50"	50%	17.2	1.72	180/160	115/1/60	55.00	95.00	PRICE MODEL SDV OR APPROVED EQUAL
VAV-87.29	12"φ	1060	0.50"	50%	22.9	2.29	180/160	115/1/60	55.00	95.00	PRICE MODEL SDV OR APPROVED EQUAL
VAV-87.30	10"φ	795	0.50"	50%	17.2	1.72	180/160	115/1/60	55.00	95.00	PRICE MODEL SDV OR APPROVED EQUAL
VAV-87.31	10"φ	915	0.50"	50%	19.8	1.98	180/160	115/1/60	55.00	95.00	PRICE MODEL SDV OR APPROVED EQUAL
VAV-87.32	10"φ	745	0.50"	50%	16.1	1.61	180/160	115/1/60	55.00	95.00	PRICE MODEL SDV OR APPROVED EQUAL
VAV-87.33	12"φ	1065	0.50"	50%	23.0	2.30	180/160	115/1/60	55.00	95.00	PRICE MODEL SDV OR APPROVED EQUAL
VAV-87.34	10"φ	850	0.50"	50%	4.3	0.43	180/160	115/1/60	55.00	95.00	PRICE MODEL SDV OR APPROVED EQUAL

- CONTRACTOR TO PROVIDE ACCESS PANEL IN CEILING FOR EVERY VAV BOX LOCATED ABOVE HARD GYPSUM CEILINGS. ACCESS PANELS ARE TO BE FULL SIZE OF VAV BOX IN ORDER TO ALLOW ACCESS TO HOT WATER VALVES.
- REFER TO SCHEDULES FOR BRANCH PIPE SIZES UNLESS OTHERWISE NOTED ON DRAWINGS. PIPE SIZES ON DRAWINGS TO GOVERN OVER PIPE SIZES ON SCHEDULES.
- ALL VAV COIL SECTIONS ARE TO BE EQUIPPED WITH A DOUBLE COIL ACCESS DOOR LOCATED ON BOTTOM OF COIL SECTION ON EITHER SIDE OF THE COIL.
- PERFORMANCE OF ALL VAV BOX HOT WATER COILS ARE TO BE SELECTED AT SCHEDULED GPM AND BE ABLE TO MEET ALL SCHEDULED CRITERIA.
- REFER TO TYPICAL DETAIL.
- ALL VAV BOXES TO HAVE 50% MINIMUM SETPOINT UNLESS OTHERWISE NOTED ON DRAWINGS.
- WHERE ONLY ONE RIGID ROUND BRANCH DUCT IS SHOWN FROM VAV BOX TO DIFFUSER CONTRACTOR SHALL SUPPLY FACTORY INSTALL ROUND DISCHARGE COLLAR (PRICE MODEL RDC) FOR DISCHARGE OF VAV BOX, REFER TO DRAWINGS.
- ALL VAV BOXES TO BE DOUBLE WALL CONSTRUCTION.
- ALL VAV BOXES TO HAVE CLOSED CELL FOAM INSULATION APPROVED FOR CLEAN ROOM APPLICATIONS.
- THESE CONTROL DEVICES SHALL BE INSTALLED IN STRICT ACCORDANCE SERVICES OF A FACTORY AUTHORIZED SPECIALIST IN THESE CONTROLS FOR THE PURPOSES OF PREPARING ALL SHOP DRAWINGS (WIRING DIAGRAMS, REVIEW THE INSTALLATION DURING THE CONSTRUCTION.)
- APPROVED MANUFACTURER'S: TITUS, METALAIRE, AND NAILOR WITH MANUFACTURER'S RECOMMENDATIONS. THIS CONTR. SHALL RETAIN THE CUT-SHEET'S, ETC. FACTORY START-UP AFTER THE INSTALLATION IS COMPLETE.

MECHANICAL AIRSIDE LEGEND

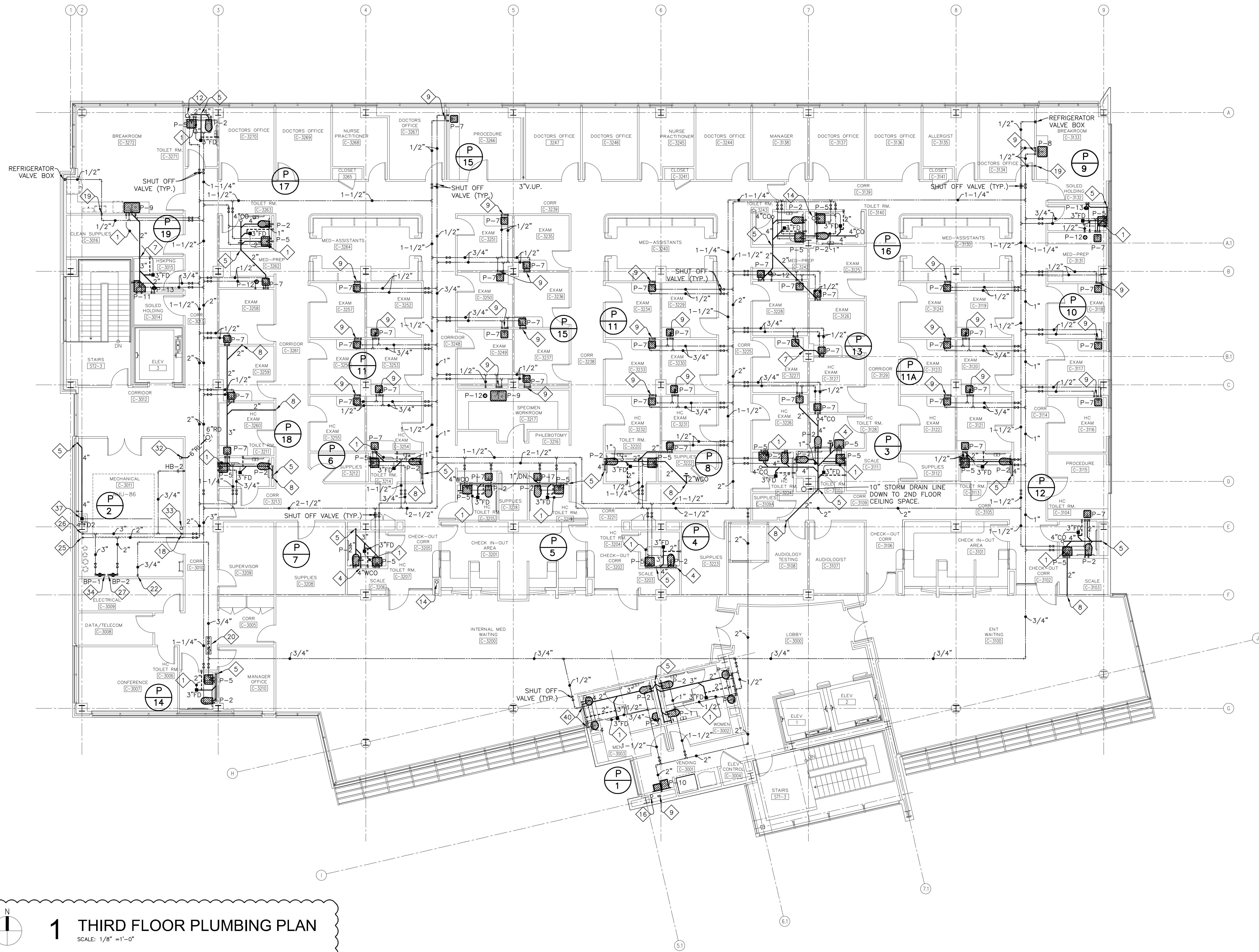
NOTE: ALL SYMBOLS IN THIS LEGEND ARE NOT NECESSARILY FOUND ON THE PLANS

SYMBOL	DESCRIPTION	SYMBOL	DESCRIPTION
	CEILING SUPPLY AIR DEVICE		EXH OR RETURN AIR DUCT 90° ELBOW DOWN
	CEILING RETURN AIR OR EXHAUST AIR DEVICE		CONNECTION BETWEEN NEW AND EXISTING DUCT
	CEILING SUPPLY AIR SLOT OR SINGLE LIGHT TROFFER		DUCT RISE (CHANGE OF ELEVATION)
	SUPPLY AIR DUCT		DUCT DROP (CHANGE OF ELEVATION)
	DOUBLE SUPPLY AIR SLOT LIGHT TROFFER		DUCT W/MANUAL SPLITTER(ADJUSTABLE & LOCKABLE)
	RETURN AIR OR EXH. AIR DUCT		STANDARD BRANCH FOR SA. OR RA. DUCT
	DUCT WORK		AIR DEVICE TYPE (TYPE-A)
	90° ELBOW W/TURNING VANE DUCT		AIR QUANTITY (150 CFM)
	VOLUME DAMPER OR MANUAL DAMPER, RECT. & ROUND DUCT		REFER TO SHEET M-2
	MOTORIZED DAMPER OR AUTO DAMPER		DETAIL NUMBER (2)
	FIRE DAMPER, RATED FOR 2 HR., TYPICAL		EQUIPMENT
	SMOKE DAMPER		SENSOR FOR THERMOSTAT
	COMBINATION FIRE AND SMOKE DAMPER		THERMOSTAT
	BACK DRAFT DAMPER		FIRESTAT
	FLEXIBLE DUCT (SINGLE LINE OR DOUBLE LINE)		HUMIDISTAT
	SUPPLY AIR DUCT 90° ELBOW UP		SENSOR FOR HUMIDISTAT IN R/A DUCT
	EXH OR RETURN AIR DUCT 90° ELBOW UP		SMOKE DETECTOR
	SUPPLY AIR DUCT 90° ELBOW DOWN		AIR EXTRACTOR
	M.V.D. IN DUCT DROP		45° DUCT LOW LOSS TAP WITH DAMPER

PIPING ELEMENTS/VALVING

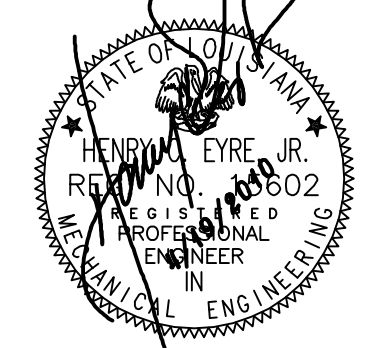
NOTE: ALL SYMBOLS IN THIS LEGEND ARE NOT NECESSARILY FOUND ON THE PLANS

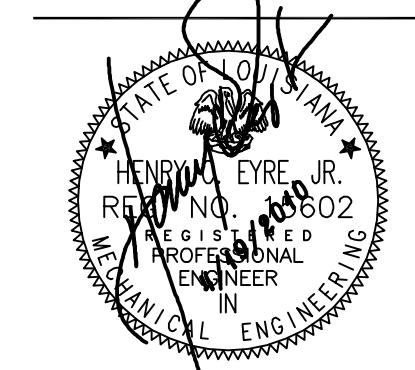
	EXISTING EQUIPMENT OR PIPING TO BE REMOVED.		FUSIBLE LINK VALVE-QUICK CLOSING		ANCHOR
	GATE VALVE		FUSIBLE LINK VALVE-QUICK OPENING		GUIDE
	GLOBE VALVE		AUTOMATIC FILL VALVE		EXPANSION JOINT
	BALANCING VALVE		MANUAL AIR VENT		FLOW SWITCH
	BUTTERFLY VALVE		AUTOMATIC AIR VENT (EXTEND DISCHARGE TO DRAIN)		TEMPERATURE TRANSMITTER
	BALL VALVE		FLOW METER-VENTURI		PRESSURE TRANSMITTER OR PRESSURE SWITCH
	SWING CHECK VALVE		FLOW METER-ORIFICE		THERMOMETER
	LIFT CHECK VALVE		DIRECTION OF FLOW		GAUGE WITH GAUGE COCK & SYPHON (STEAM)
	CIRCUIT SETTING BALANCING VALVE		DIRECTION OF PITCH-RISE OR DROP		AQUASTAT
	THREE WAY CONTROL VALVE		STRAINER		GAS PRESSURE REGULATOR
	TWO WAY CONTROL VALVE		STRAINER WITH BLOW OFF VALVE		FLOAT OPERATED CONTROL VALVE
	SOLENOID VALVE		PIPE RISING UP		BASKET STRAINER
	PRESSURE REDUCING VALVE (PRV)		PIPE DROPPING DOWN		STEAM TRAP
	TEMPERATURE/PRESSURE RELIEF VALVE		CONCENTRIC REDUCER		ELECTRICALLY TRACED PIPING
	RELIEF/SAFETY VALVE		ECCENTRIC REDUCER		EXPANSION LOOP (WH)
	VACUUM BREAKER		UNION - SCREWED OR FLANGED		
			STEAM LEAK DETECTOR		




1 THIRD FLOOR PLUMBING PLAN
 SCALE: 1/8" = 1'-0"

REFER TO SHEET P1.0 FOR PLUMBING KEYNOTES

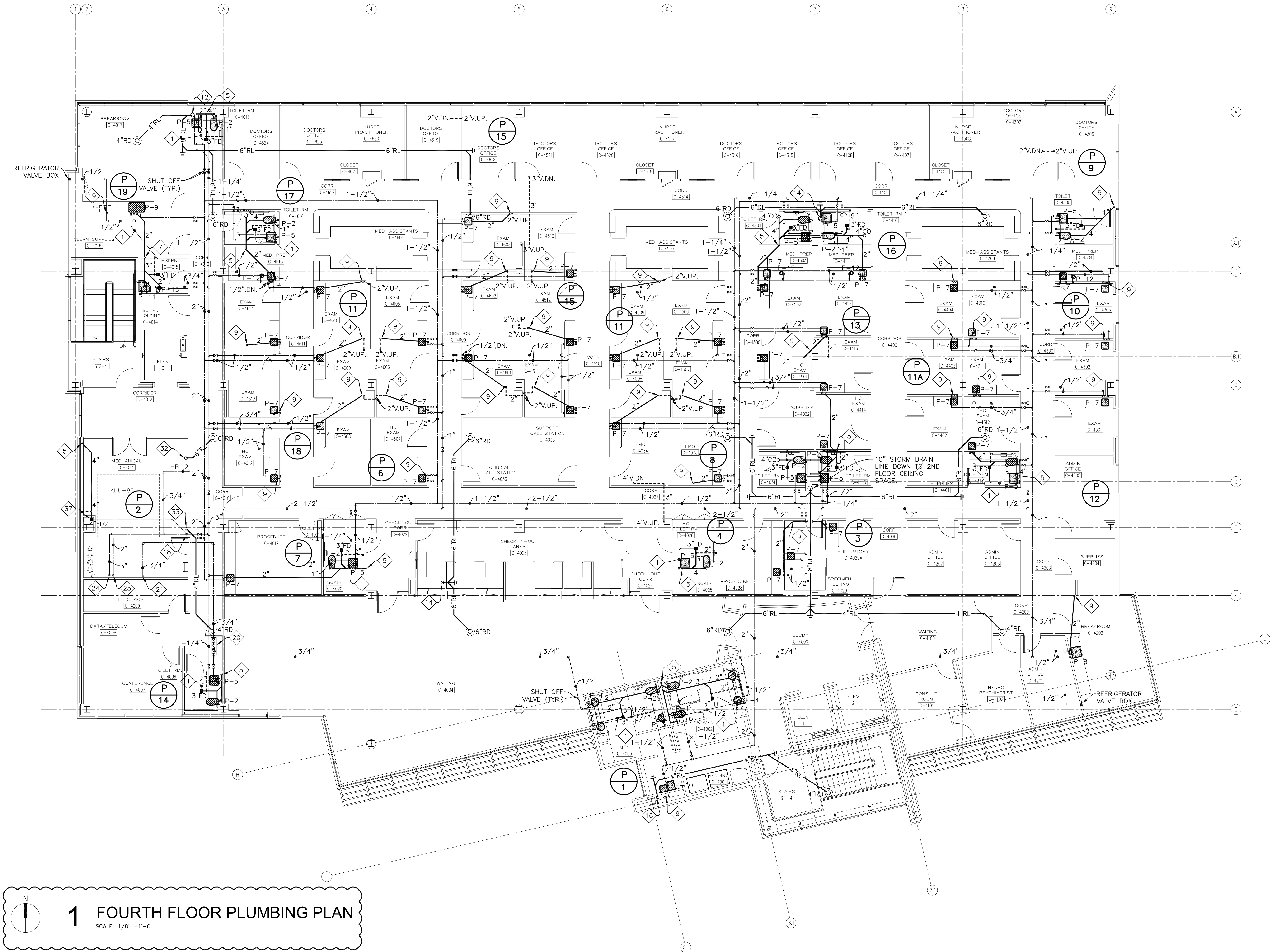




washer hill lipscomb cabaniss
architecture, llc
copyright 2007

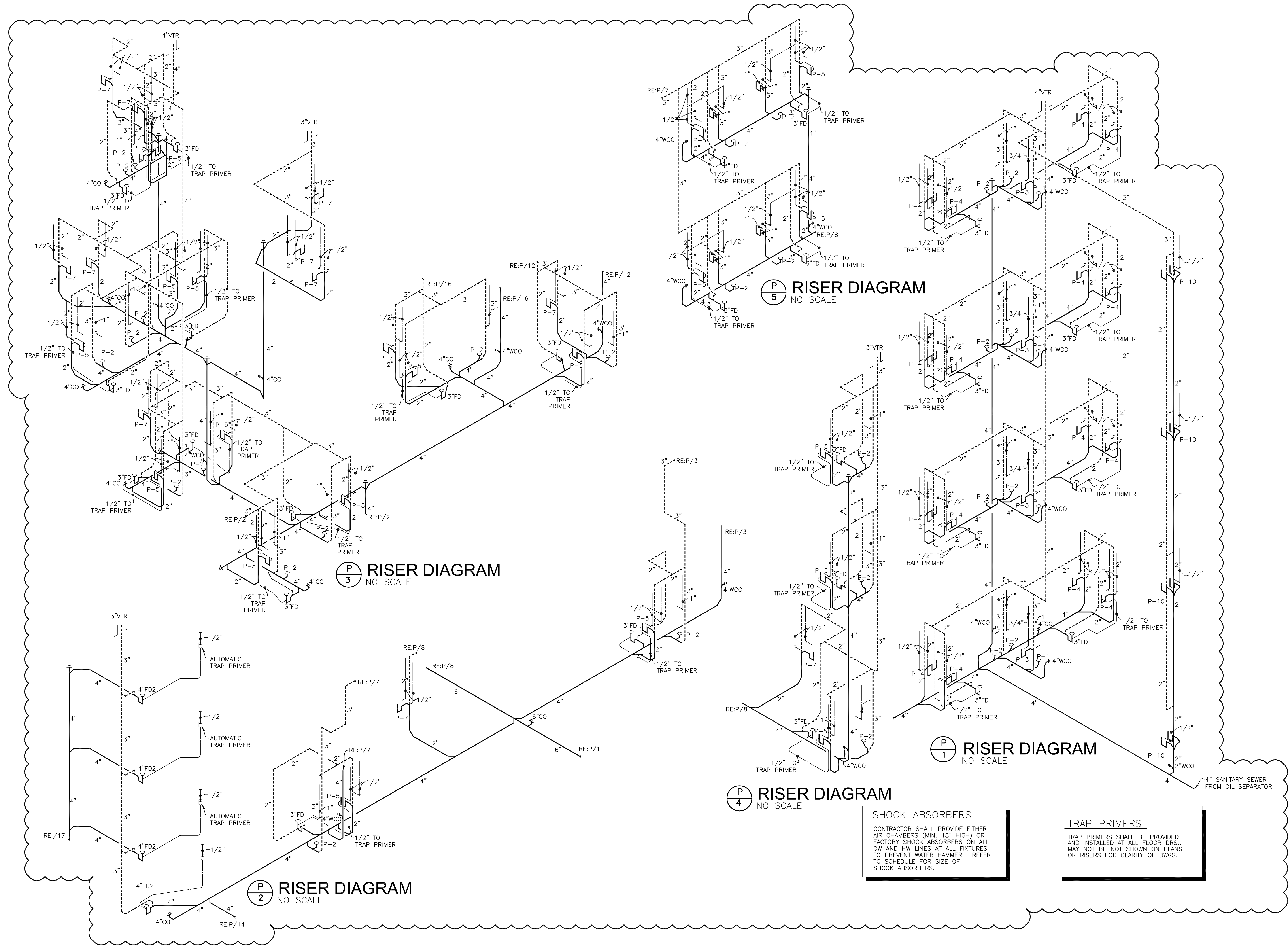
1744 oakdale dr baton rouge, la
7225.767.1530 7225.767.0018

Construction Documents
05-076G
18 May 2010
ASI #2



1 FOURTH FLOOR PLUMBING PLAN
SCALE: 1/8" = 1'-0"

REFER TO SHEET P1.0 FOR PLUMBING KEYNOTES



P 3
RISER DIAGRAM
NO SCALE

P 5
RISER DIAGRAM
NO SCALE

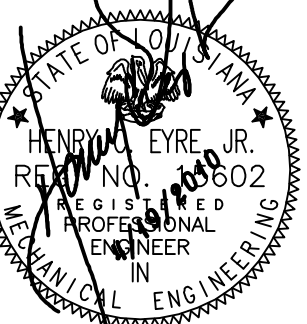
P 1
RISER DIAGRAM
NO SCALE

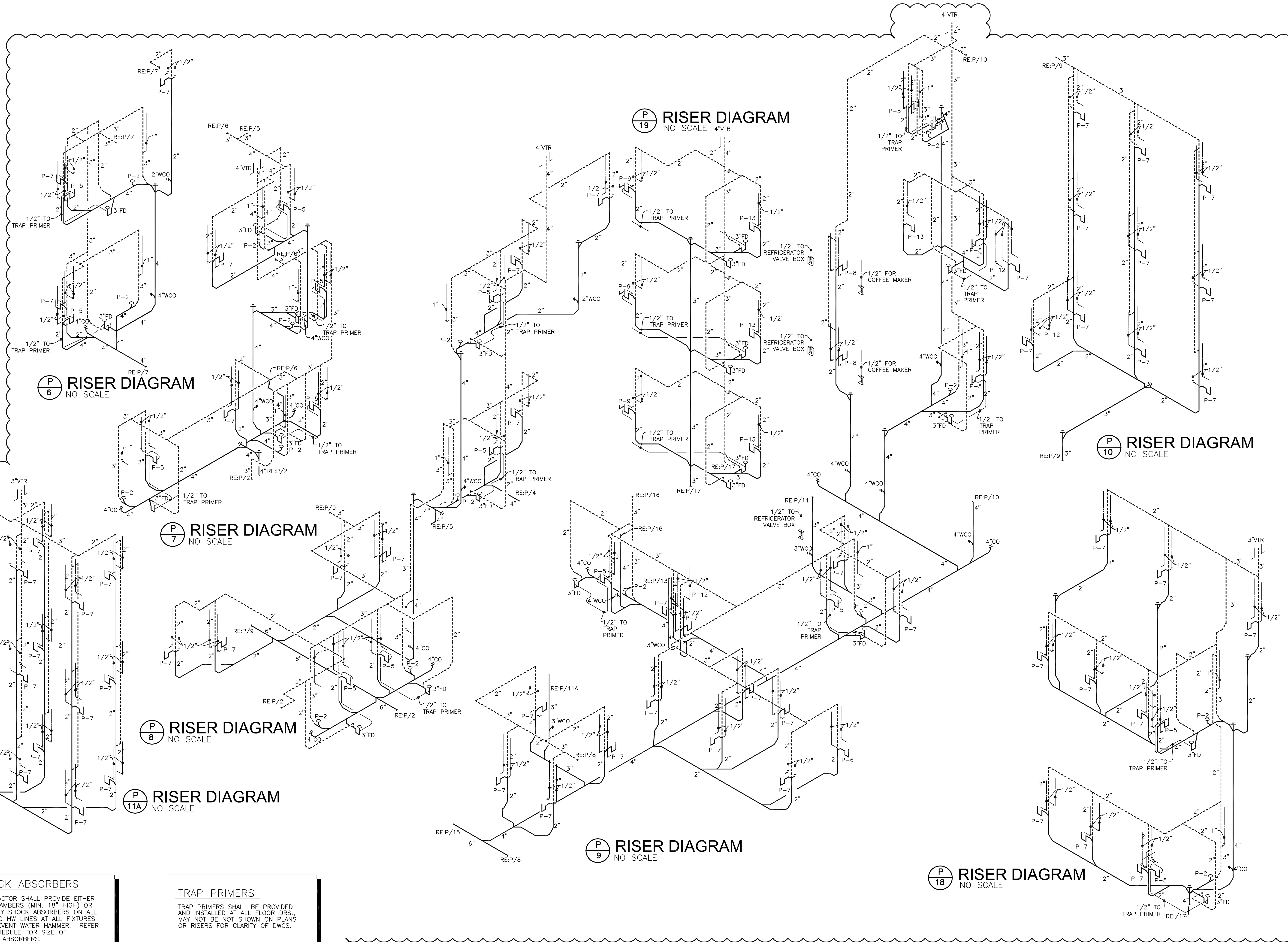
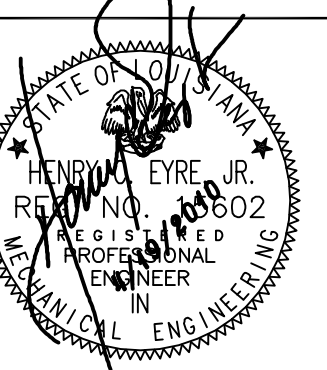
P 4
RISER DIAGRAM
NO SCALE

P 2
RISER DIAGRAM
NO SCALE

SHOCK ABSORBERS
CONTRACTOR SHALL PROVIDE EITHER AIR CHAMBERS (MIN. 18" HIGH) OR FACTORY SHOCK ABSORBERS ON ALL CW AND HW LINES AT ALL FIXTURES TO PREVENT WATER HAMMER. REFER TO SCHEDULE FOR SIZE OF SHOCK ABSORBERS.

TRAP PRIMERS
TRAP PRIMERS SHALL BE PROVIDED AND INSTALLED AT ALL FLOOR DR'S. MAY NOT BE NOT SHOWN ON PLANS OR RISERS FOR CLARITY OF DWGS.





P 6 RISER DIAGRAM
NO SCALE

P 19 RISER DIAGRAM
NO SCALE

P 10 RISER DIAGRAM
NO SCALE

P 7 RISER DIAGRAM
NO SCALE

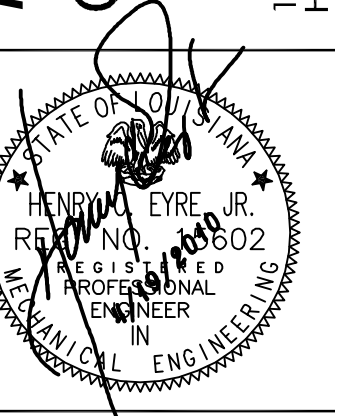
P 8 RISER DIAGRAM
NO SCALE

P 9 RISER DIAGRAM
NO SCALE

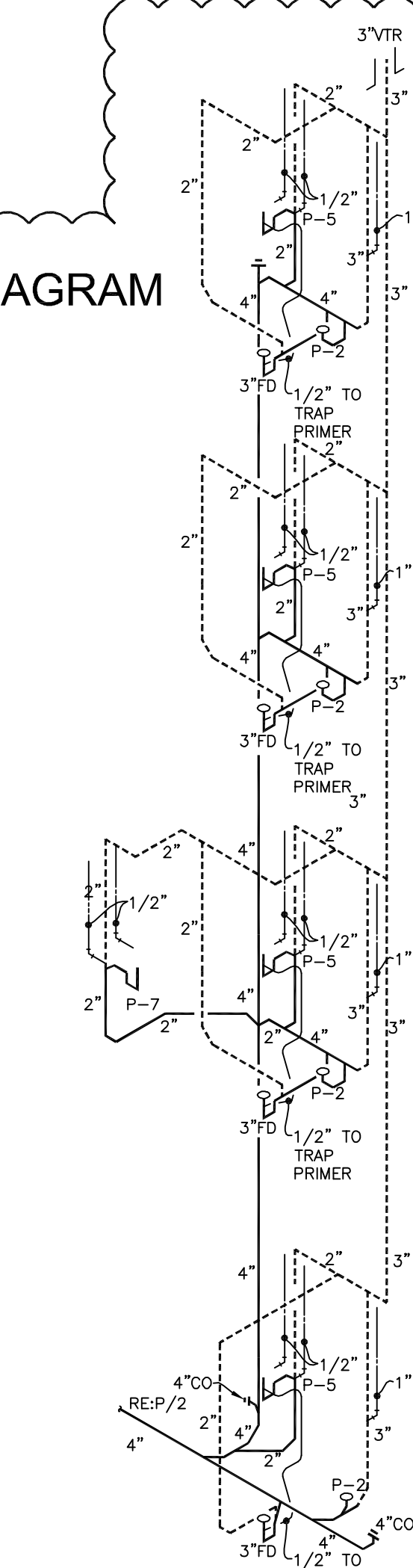
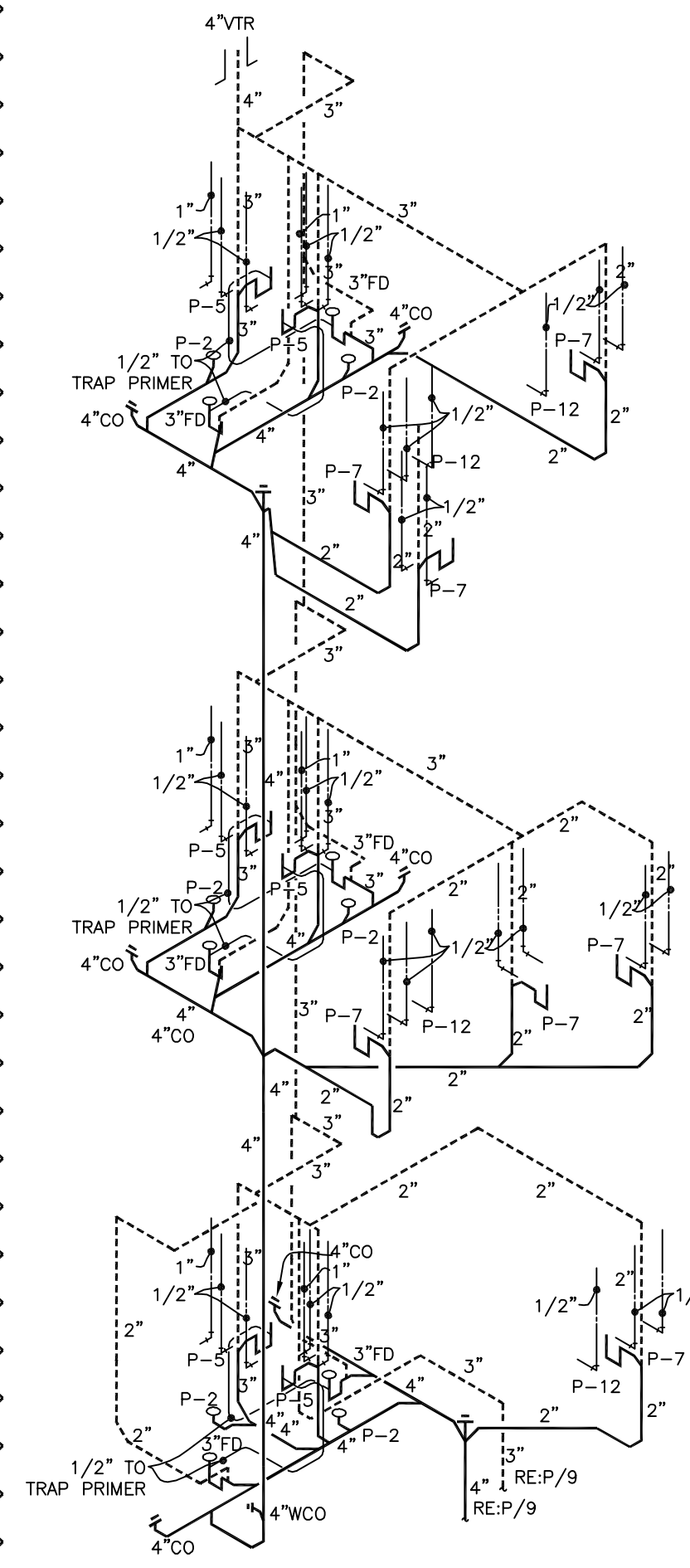
P 18 RISER DIAGRAM
NO SCALE

SHOCK ABSORBERS
CONTRACTOR SHALL PROVIDE EITHER AIR CHAMBERS (MIN. 18" HIGH) OR FACTORY SHOCK ABSORBERS ON ALL CW AND HW LINES AT ALL FIXTURES TO PREVENT WATER HAMMER. REFER TO SCHEDULE FOR SIZE OF SHOCK ABSORBERS.

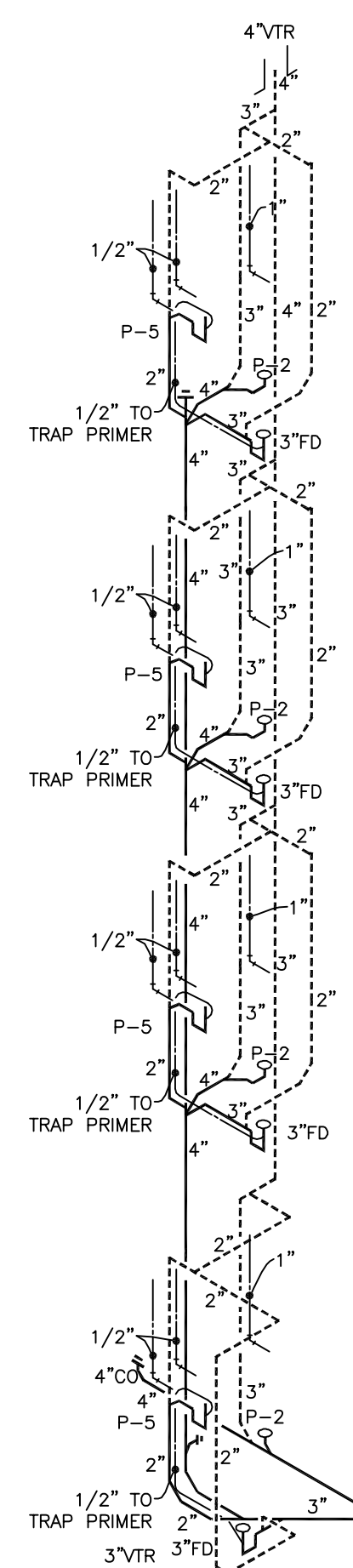
TRAP PRIMERS
TRAP PRIMERS SHALL BE PROVIDED AND INSTALLED AT ALL FLOOR DRs., MAY NOT BE NOT SHOWN ON PLANS OR RISERS FOR CLARITY OF DWGS.



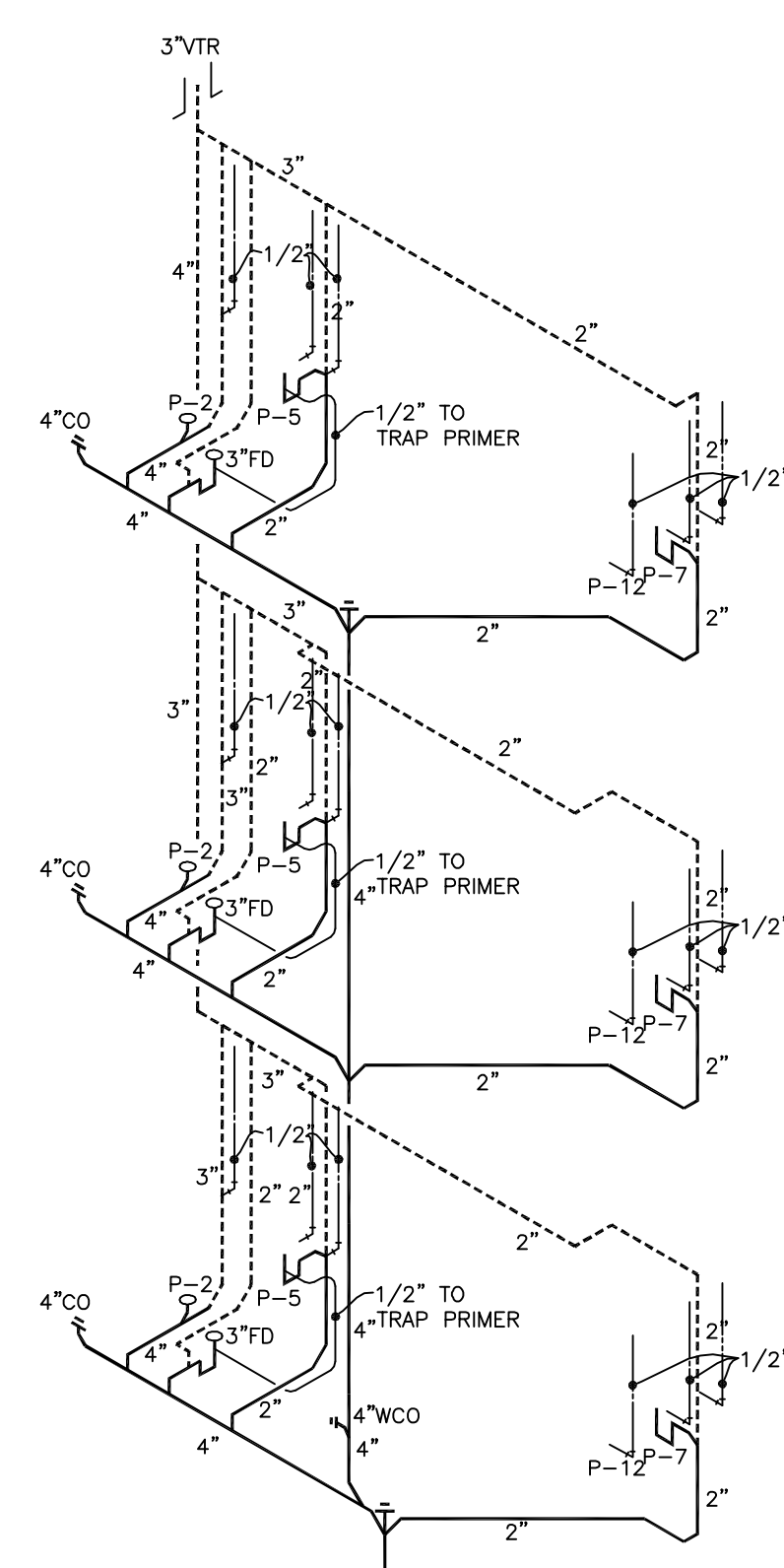
P 14
RISER DIAGRAM
NO SCALE



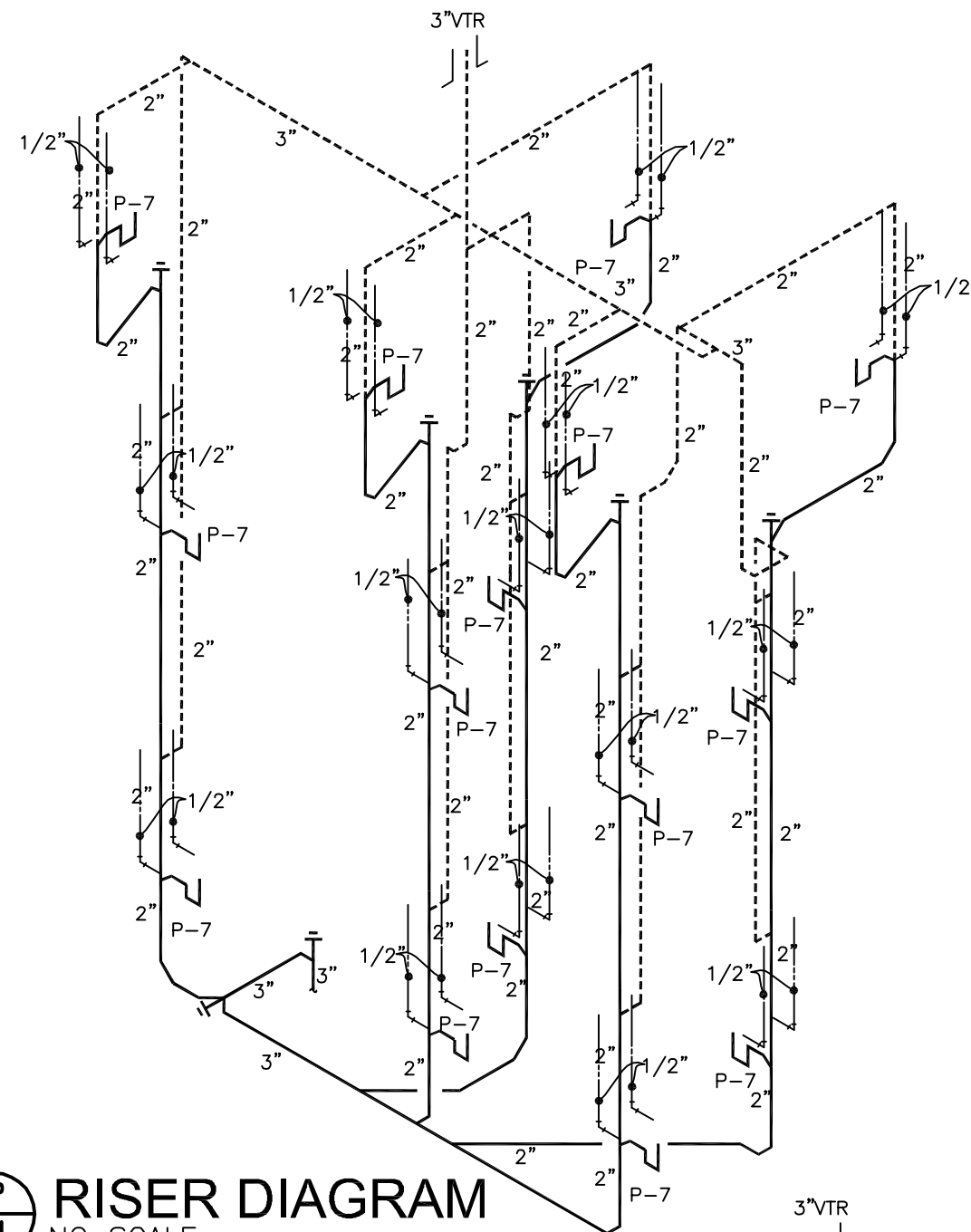
P 12
RISER DIAGRAM
NO SCALE



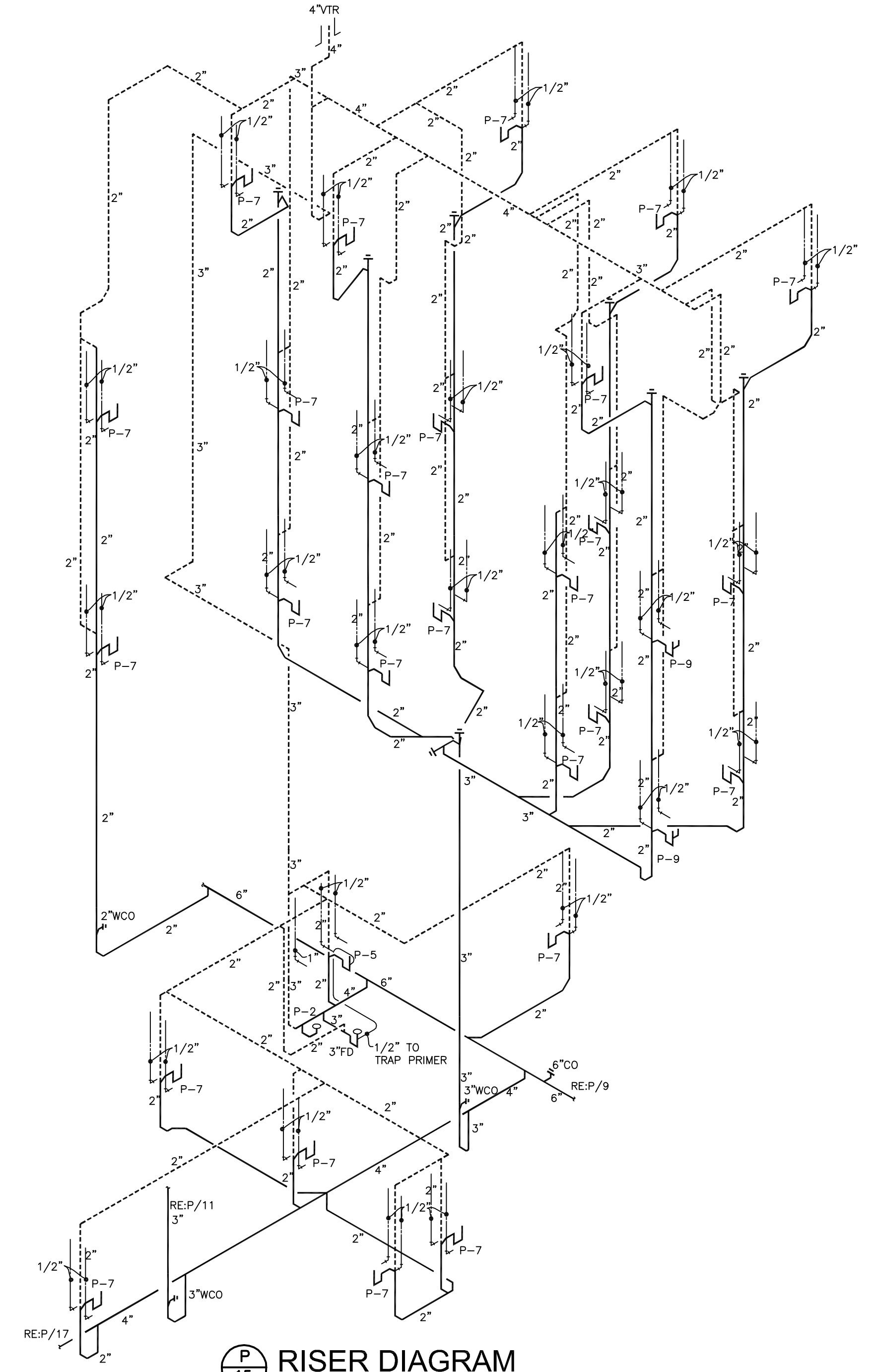
P 17
RISER DIAGRAM
NO SCALE



P 11
RISER DIAGRAM
NO SCALE



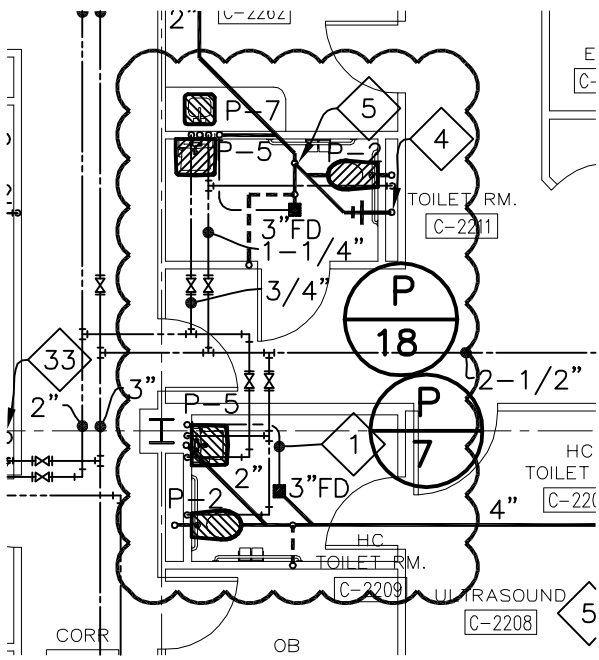
P 13
RISER DIAGRAM
NO SCALE



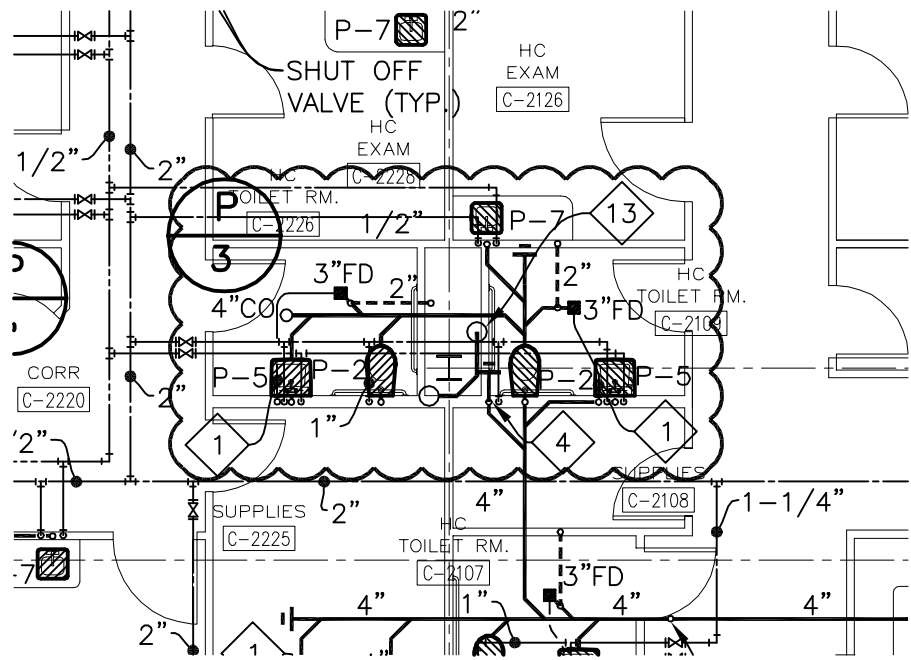
P 15
RISER DIAGRAM
NO SCALE

SHOCK ABSORBERS
CONTRACTOR SHALL PROVIDE EITHER AIR CHAMBERS (MIN. 18\" HIGH) OR FACTORY SHOCK ABSORBERS ON ALL CW AND HW LINES AT ALL FIXTURES TO PREVENT WATER HAMMER. REFER TO SCHEDULE FOR SIZE OF SHOCK ABSORBERS.

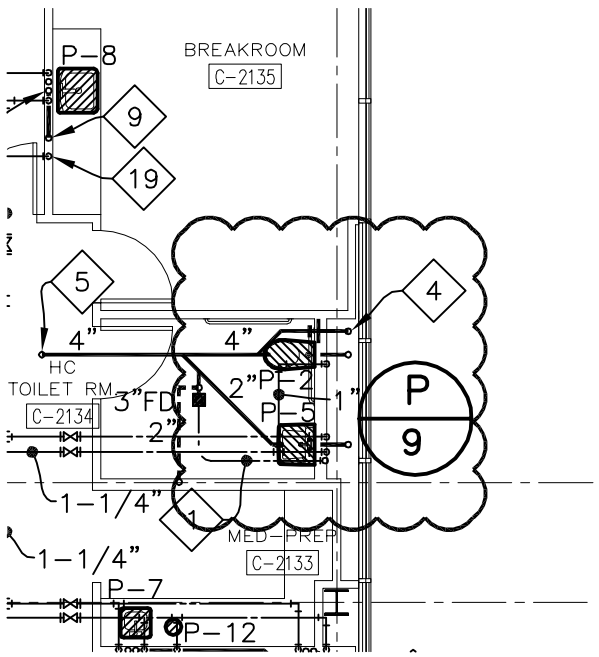
TRAP PRIMERS
TRAP PRIMERS SHALL BE PROVIDED AND INSTALLED AT ALL FLOOR DRS. MAY NOT BE NOT SHOWN ON PLANS OR RISERS FOR CLARITY OF DWGS.



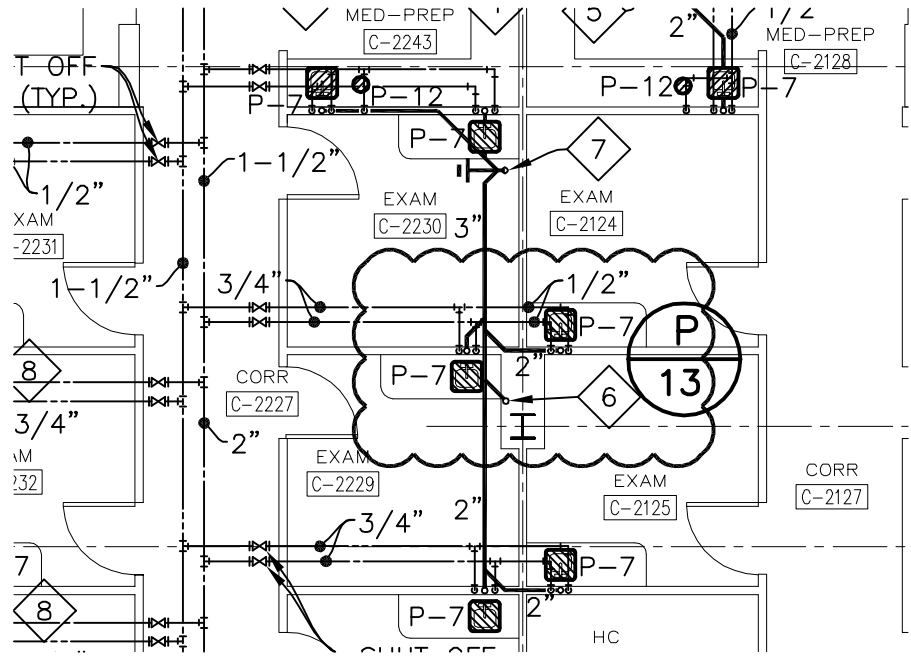
PARTIAL 2ND FLOOR - PLUMBING
SCALE 1/8"=1'0"



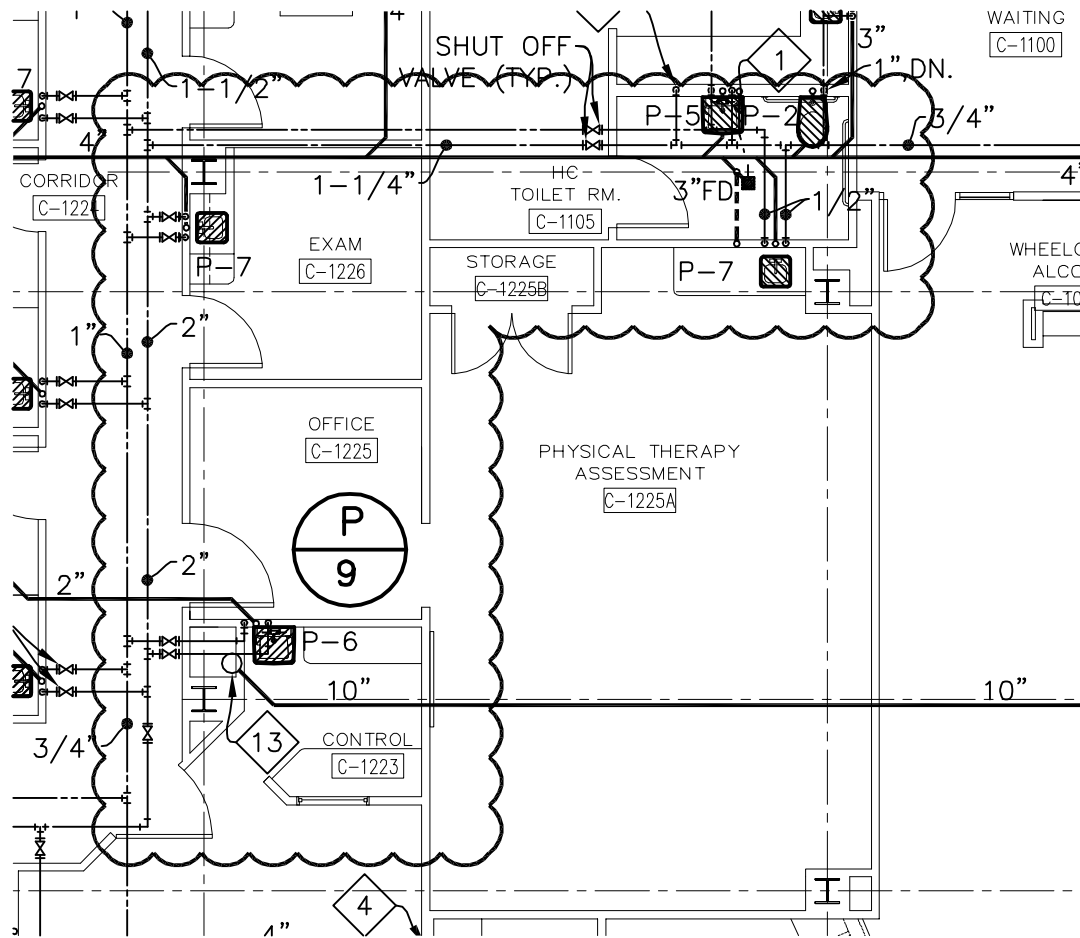
PARTIAL 2ND FLOOR - PLUMBING
SCALE 1/8"=1'0"



PARTIAL 2ND FLOOR - PLUMBING
SCALE 1/8"=1'0"



PARTIAL 2ND FLOOR - PLUMBING
SCALE 1/8"=1'0"



PARTIAL 1ST FLOOR - PLUMBING
SCALE 1/8"=1'0"



Gold Leaf Holdings Medical Clinic Building
15790 Paul Vega MD Dr., Hammond, LA 70403

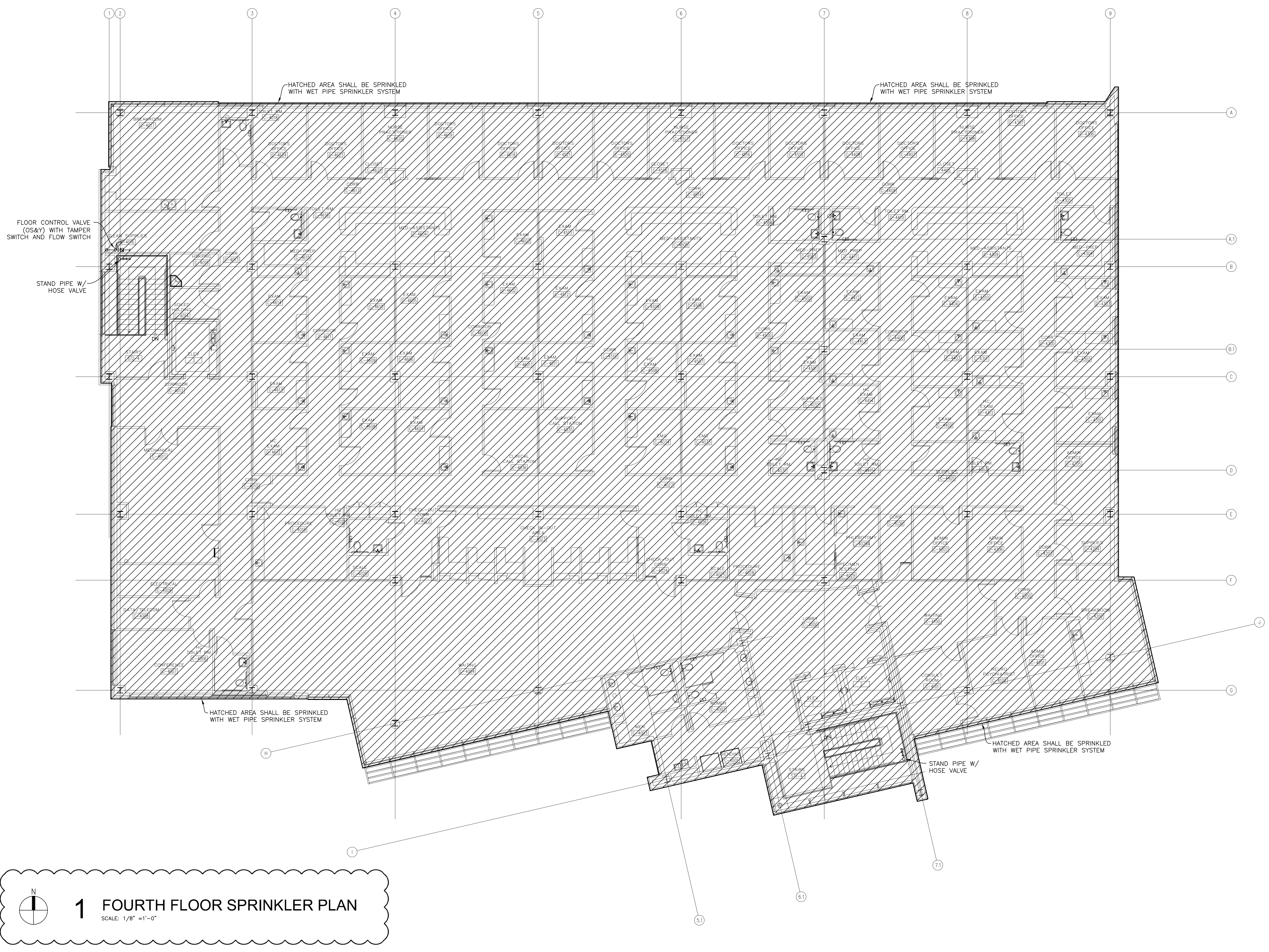
Re: Sheet P1.1, P1.2
11-18-10
ASI #2



washer hill lipscomb cabaniss
architecture, llc
copyright 2007

1744 oakdale dr baton rouge, la
† 225.767.1530 † 225.767.0018

PSK-09




1 FOURTH FLOOR SPRINKLER PLAN
 SCALE: 1/8" = 1'-0"

