



Project No. 33837

Humana Signage Package

4101 South Carrollton Avenue
New Orleans, LA 70119
USA



LEGEND

S1	Front Elevation - Window Graphics
S2	Side Elevation - Window Graphics
S3	Side Elevation - Window Graphics
T1	Tenant Panels
P1	Parking Lot Signs
V1	Entry Door Vinyl
V2	Narcotics/Firearms Prohibited Vinyl
G1	Side Elevation - Window Graphics
B1	Temp Banner

SIGNAGE CRITERIA

Code:
 Wall Sign: 1 SF per linear foot of frontage, min 20 SF per tenant
 Window Graphics: NTE 10% of window area
 Banner: NTE 32 SF, nonly allowed on site for max 30 days

Landlord restrictions:
 N/A

S1	16.33 x 1 = 16.33 SF
S2	50.5 x 1 = 50.5 SF
S3	40 x 1 = 40 SF
G1	37.9 x 20% = 7.6 SF
B1	NTE 32 SF



425 N Martingale Rd
 18th Floor
 Schaumburg, IL 60173
 Office 847.301.0510
 identiti.net

W.O. No. 33837
Address 4101 South Carrollton Ave
City, ST New Orleans, LA 70119

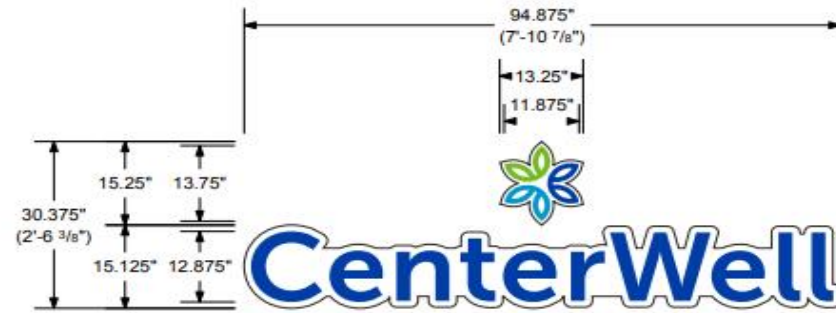
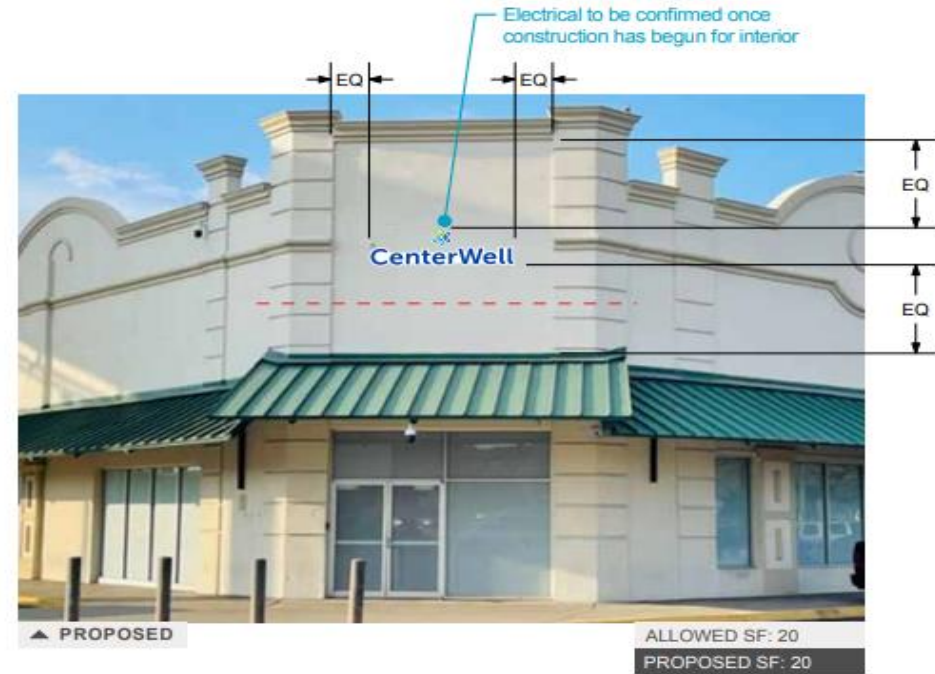
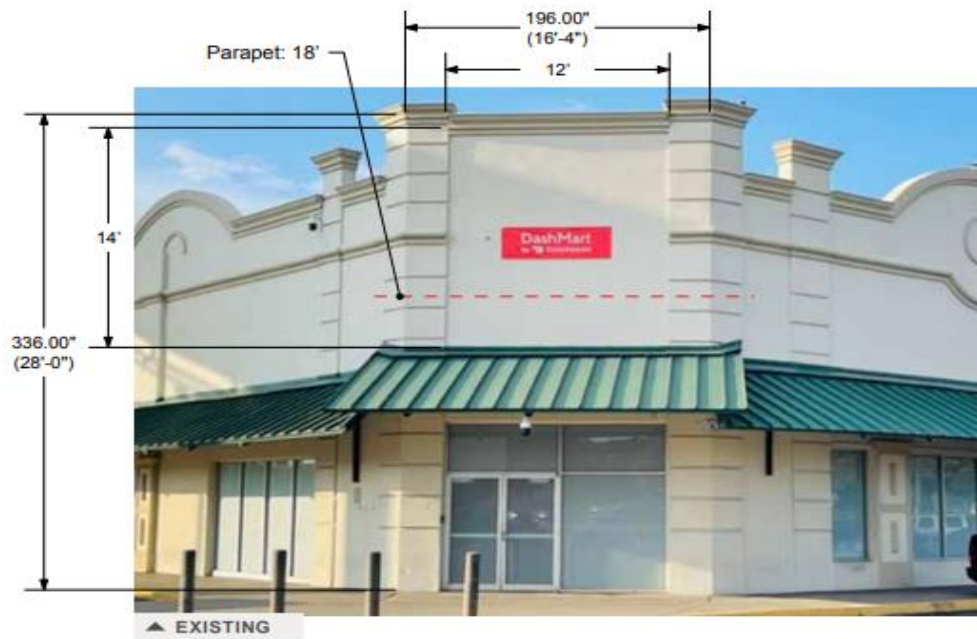
Orig. Draft 10.06.23
Project Mgr. Michelle Schrader
Designer Stephanie Chan

Rev. Art Steph Chan
Rev. Date 11.20.2023
Page Rev. 001

Customer



Plan View:
Site Plan
 Exterior



SCALE: 1/2" = 12"



425 N Martingale Rd
18th Floor
Schaumburg, IL 60173
Office 847.301.0510
identiti.net

W.O. No. 33837
Address 4101 South Carrollton Ave
City, ST New Orleans, LA 70119

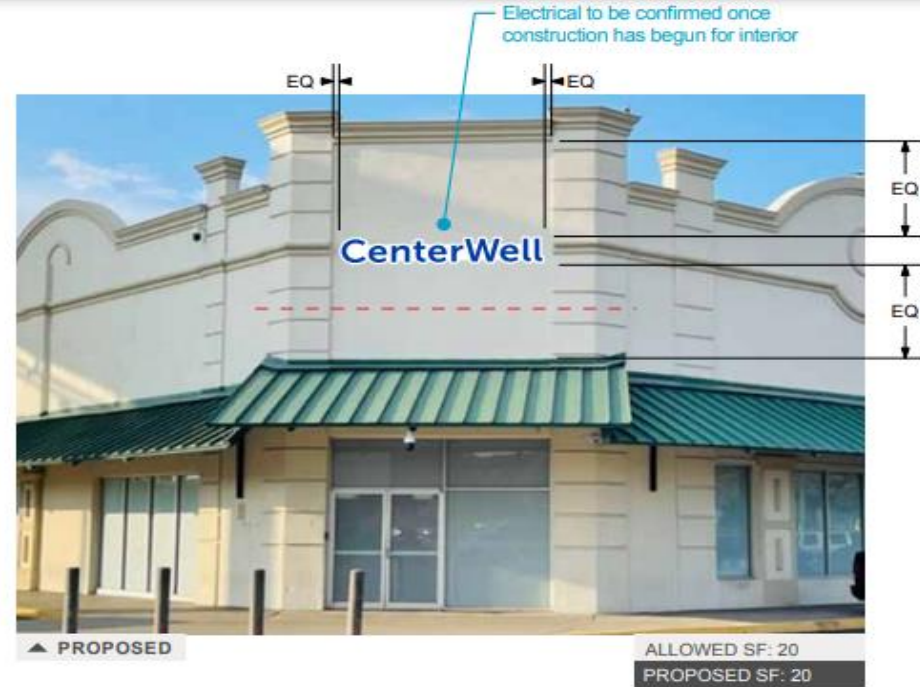
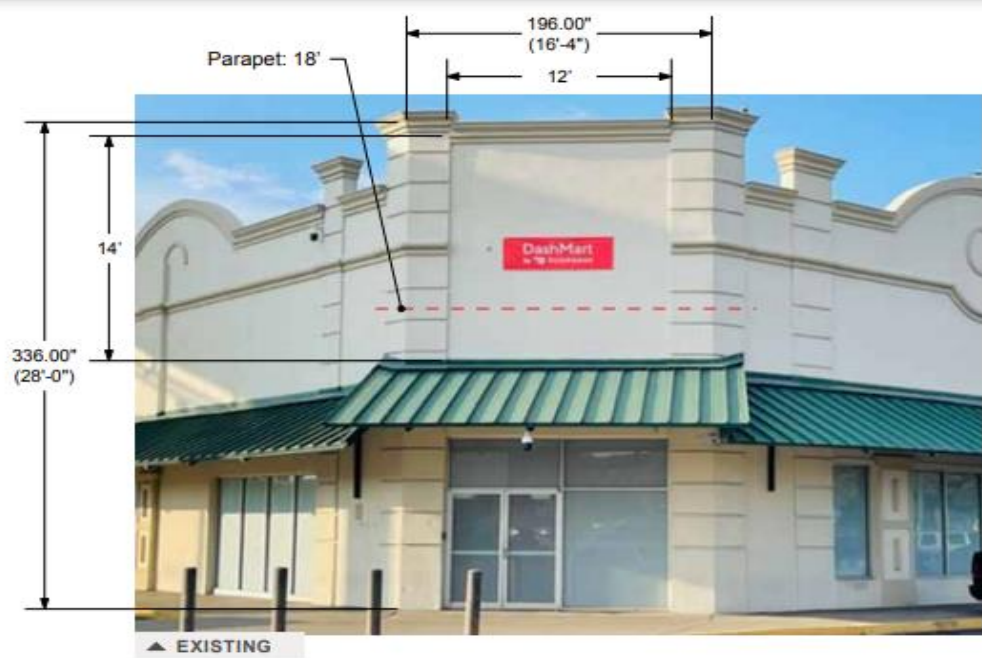
Orig. Draft 10.06.23
Project Mgr. Michelle Schrader
Designer Stephanie Chan

Rev. Art Steph Chan
Rev. Date 11.20.2023
Page Rev. 001

Color Palette	
■ 3M #3635-157 Dual-Color Sultan Blue	■ 3M #3635-200 Dual-Color Film to match PMS 801c
■ 3M #3635-200 Dual-Color Film to match PMS 368c	■ White Returns & .125 Backer Panel
■ 2nd Surface 3635-70 White diffuser film	

Sign Type:
Front-Lit LED Letterset
with .125 Contour Backer
Raceway Mounted

Signage:
S1-1
South Elevation



DAMMON
ENGINEERING

SCALE: 1/2" = 12'



425 N Martingale Rd
18th Floor
Schaumburg, IL 60173
Office 847.301.0510
identiti.net

W.O. No. 33837
Address 4101 South Carrollton Ave
City, ST New Orleans, LA 70119

Orig. Draft 10.06.23
Project Mgr. Michelle Schrader
Designer Stephanie Chan

Rev. Art Steph Chan
Rev. Date 11.20.2023
Page Rev. 001

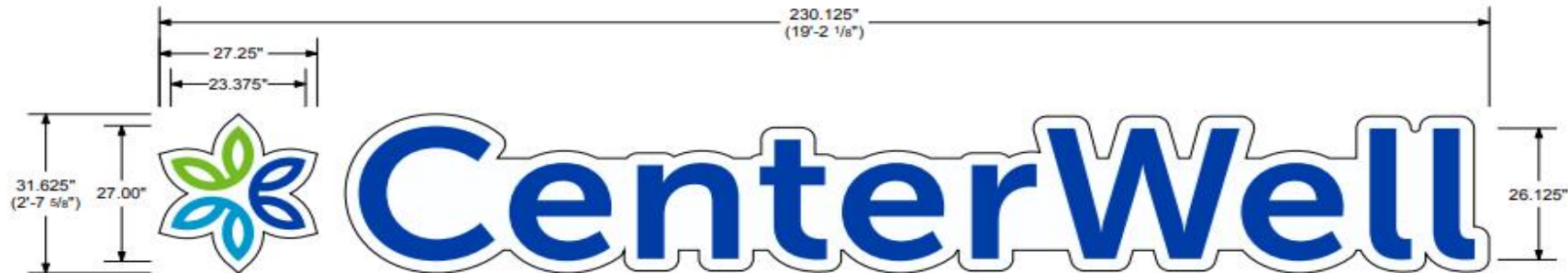
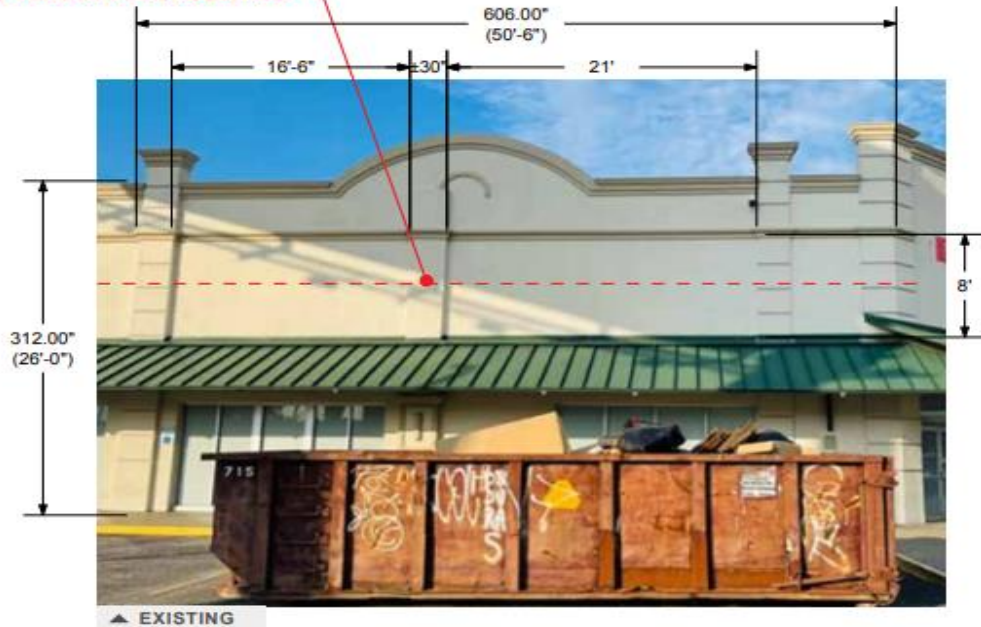
Color Palette

- 3M #3635-157 Dual-Color Sultan Blue
- 3M #3635-200 Dual-Color Film to match PMS 368c
- 2nd Surface 3635-70 White diffuser film
- 3M #3635-200 Dual-Color Film to match PMS 801c
- White Returns & .125 Backer Panel

Sign Type:
Front-Lit LED Letterset
with .125 Contour Backer
Raceway Mounted

Signage:
S1-2
South Elevation

FIELD VERIFICATION REQUIRED



DAMMON
ENGINEERING

SCALE: 1/2" = 12"



425 N Martingale Rd
18th Floor
Schaumburg, IL 60173
Office 847.301.0510
identiti.net

W.O. No. 33837
Address 4101 South Carrollton Ave
City, ST New Orleans, LA 70119

Orig. Draft 10.06.23
Project Mgr. Michelle Schrader
Designer Stephanie Chan

Rev. Art Steph Chan
Rev. Date 11.20.2023
Page Rev. 001

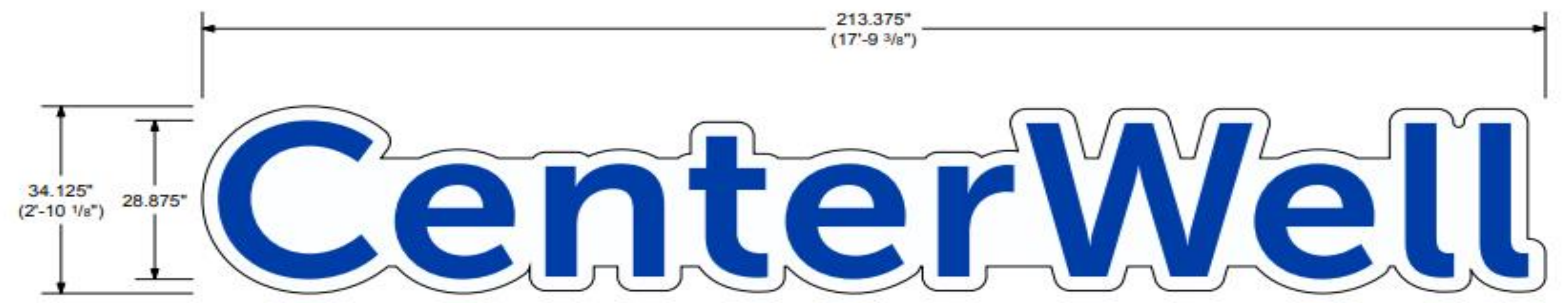
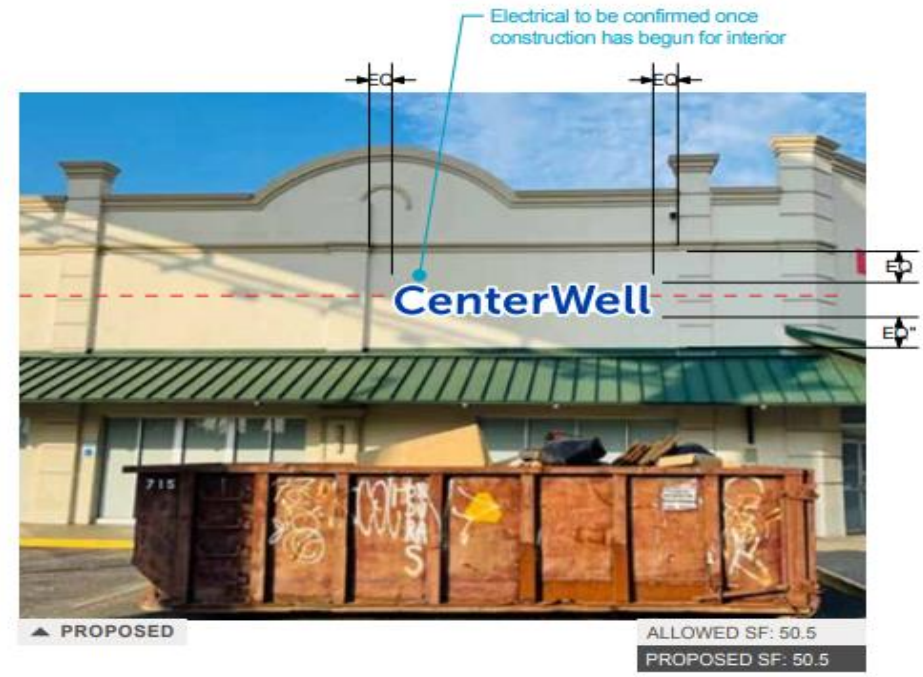
Color Palette

- 3M #3635-157 Dual-Color Sultan Blue
- 3M #3635-200 Dual-Color Film to match PMS 801c
- 3M #3635-200 Dual-Color Film to match PMS 368c
- 2nd Surface 3635-70 White diffuser film
- White Returns & .125 Backer Panel

Sign Type:
Front- Lit LED Letterset
with .125 Contour Backer
Raceway Mounted

Signage:
S2-1
West Elevation

FIELD VERIFICATION REQUIRED



SCALE: 1/2" = 12'

IDENTITI
425 N Martingale Rd
18th Floor
Schaumburg, IL 60173
Office 847.301.0510
identiti.net

W.O. No. 33837
Address 4101 South Carrollton Ave
City, ST New Orleans, LA 70119

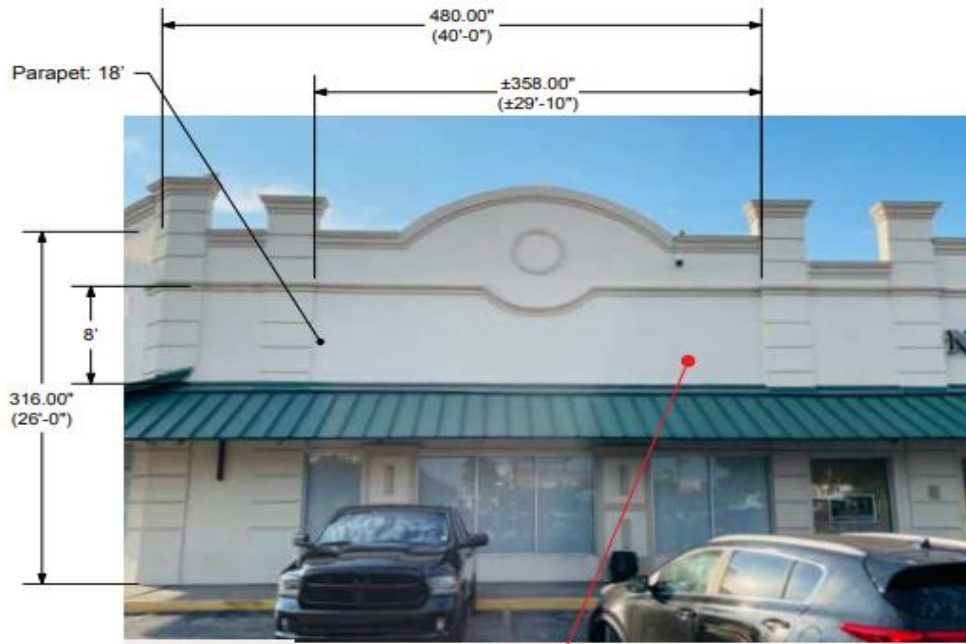
Orig. Draft 10.06.23
Project Mgr. Michelle Schrader
Designer Stephanie Chan

Rev. Art N/A
Rev. Date 00.00.0000
Page Rev. 000

Color Palette		
■	3M #3635-157 Dual-Color Sultan Blue	■ 3M #3635-200 Dual-Color Film to match PMS 801c
■	3M #3635-200 Dual-Color Film to match PMS 368c	■
■	2nd Surface 3635-70 White diffuser film	■ White Returns & .125 Backer Panel

Sign Type:
Front- Lit LED Letterset
with .125 Contour Backer
Raceway Mounted

Signage:
S2-2
West Elevation



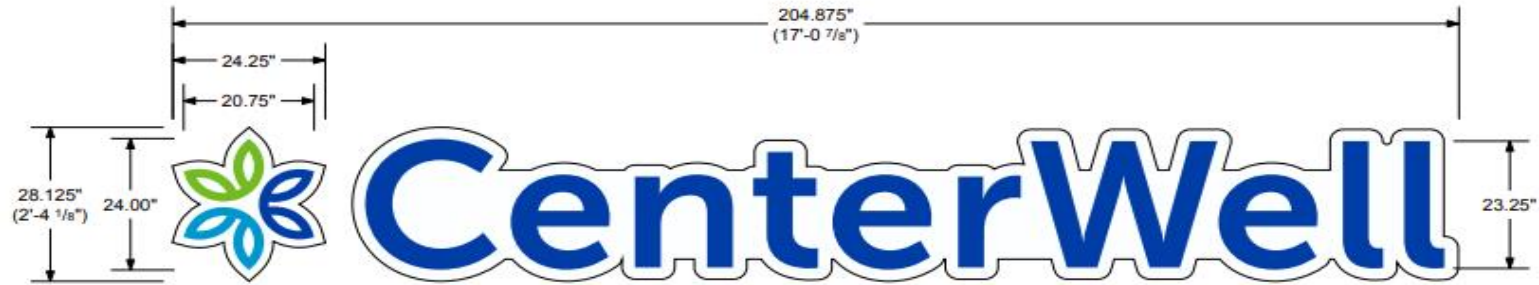
▲ EXISTING

**FIELD VERIFICATION
REQUIRED**



▲ PROPOSED

ALLOWED SF: 40
PROPOSED SF: 40



SCALE: 1/2" = 12"



425 N Martingale Rd
18th Floor
Schaumburg, IL 60173
Office 847.301.0510
identiti.net

W.O. No. 33837
Address 4101 South Carrollton Ave
City, ST New Orleans, LA 70119

Orig. Draft 10.06.23
Project Mgr. Michelle Schrader
Designer Stephanie Chan

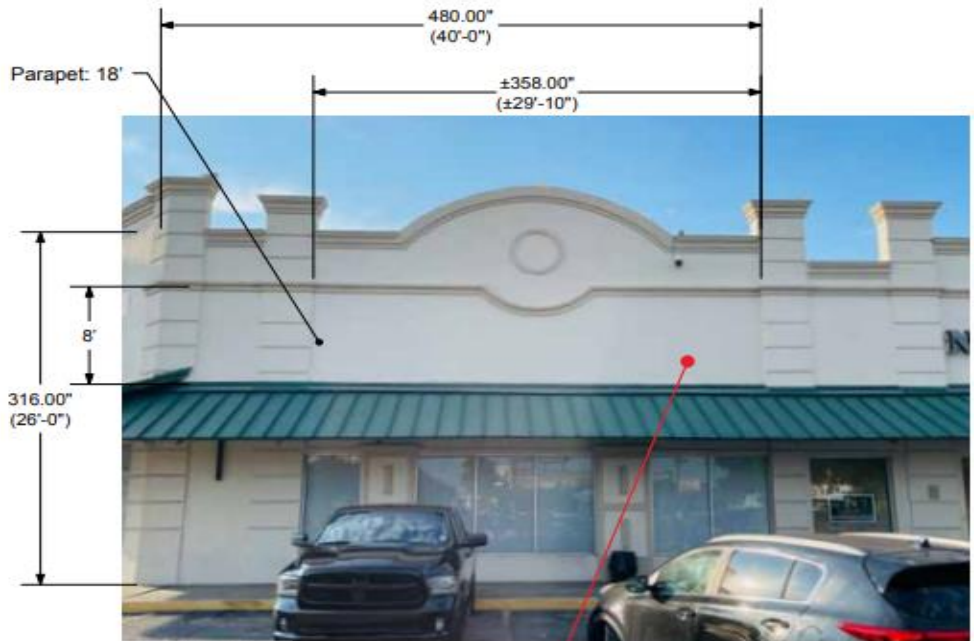
Rev. Art Steph Chan
Rev. Date 11.20.2023
Page Rev. 001

Color Palette

- 3M #3635-157 Dual-Color Sultan Blue
- 3M #3635-200 Dual-Color Film to match PMS 801c
- 3M #3635-200 Dual-Color Film to match PMS 368c
- 2nd Surface 3635-70 White diffuser film
- White Returns & .125 Backer Panel

Sign Type:
Front-Lit LED Letterset
with .125 Contour Backer
Raceway Mounted

Signage:
S3-1
East Elevation



▲ EXISTING

**FIELD VERIFICATION
REQUIRED**



▲ PROPOSED

ALLOWED SF: 40
PROPOSED SF: 40



SCALE: 1/2" = 12"



W.O. No. 33837
Address 4101 South Carrollton Ave
City, ST New Orleans, LA 70119

Orig. Draft 10.06.23
Project Mgr. Michelle Schrader
Designer Stephanie Chan

Rev. Art Steph Chan
Rev. Date 11.20.2023
Page Rev. 001

Color Palette	
■ 3M #3635-157 Dual-Color Sultan Blue	■ 3M #3635-200 Dual-Color Film to match PMS 801c
■ 3M #3635-200 Dual-Color Film to match PMS 368c	
■ 2nd Surface 3635-70 White diffuser film	■ White Returns & .125 Backer Panel

Sign Type:
Front-Lit LED Letterset
with .125 Contour Backer
Raceway Mounted

Signage:
S3-2
East Elevation

CenterWell CenterWell

Face-lit Illuminated Lettersets
Raceway Mounted & Background Panel

1st surface: 3M #3635-200 Dual-Color Film matching Pantone 368c Green
2nd surface: 3M #3635-70 White Diffuser film



1st surface: 3M #3635-157 Dual-Color Sultan Blue Film
2nd surface: 3M #3635-70 White Diffuser film

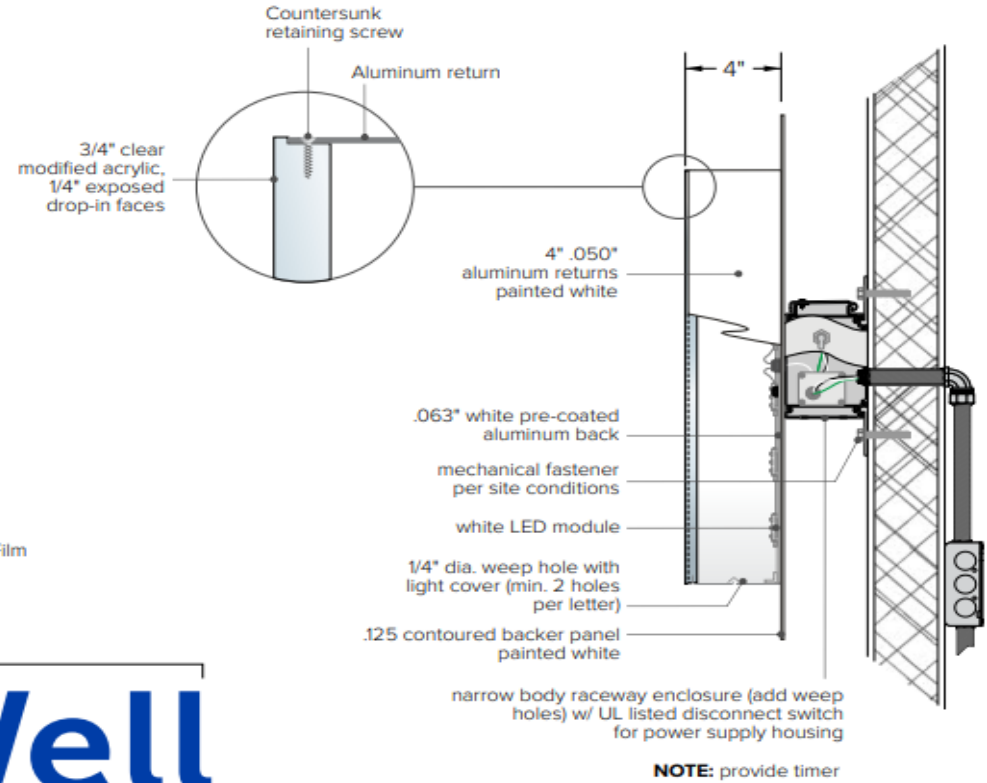


CenterWell

1st surface: 3M #3635-200 Dual-Color Film matching Pantone 801c Lt Blue
2nd surface: 3M #3635-70 White Diffuser film



Electrical Notes: All electrical components to be UL approved Customer is responsible for one (1) 120v/20a dedicated circuit with ground per sign within 6' of sign Lock out switch installed at panel box for all electrical signs Install in accordance with N.E.C. article 600 and/or local codes. This includes proper grounding and bonding of signs



425 N Martingale Rd
18th Floor
Schaumburg, IL 60173
Office 847.301.0510
identiti.net

W.O. No. 33837
Address 4101 South Carrollton Ave
City, ST New Orleans, LA 70119

Orig. Draft 10.06.23
Project Mgr. Michelle Schrader
Designer Stephanie Chan

Rev. Art Steph Chan
Rev. Date 11.20.2023
Page Rev. 001

Color Palette

- 3M #3635-157 Dual-Color Sultan Blue
- 3M #3635-200 Dual-Color Film to match PMS 368c
- 3M #3635-200 Dual-Color Film to match PMS 801c
- 2nd Surface 3635-70 White diffuser film
- White Returns & .125 Backer Panel

Sign Type:
Front- Lit LED Letterset
with .125 Contour Backer
Raceway Mounted

Signage:
S1-S3
Specifications



Sign Type
Printed vinyl graphics

Size
Size of doors and vinyls vary. Confirm with vendor and CenterWell

Mounting / Install Method

Applied to glass



Automatic Door Vinyl
Apply first surface vinyl graphics to glass door.

Placement of the actuator sticker(s) to be confirmed by sign vendor.



425 N Martingale Rd
18th Floor
Schaumburg, IL 60173
Office 847.301.0510
identiti.net

W.O. No. 33837
Address 4101 South Carrollton Ave
City, ST New Orleans, LA 70119

Orig. Draft 10.06.23
Project Mgr. Michelle Schrader
Designer Stephanie Chan

Rev. Art N/A
Rev. Date 00.00.0000
Page Rev. 000

Color Palette
3M 7725-20 Matte White

Sign Type:
Applied Vinyl,
First Surface

Signage:
V1
Entry Door Vinyl



SCALE: 1" = 12"



425 N Martingale Rd
18th Floor
Schaumburg, IL 60173
Office 847.301.0510
identiti.net

W.O. No. 33837
Address 4101 South Carrollton Ave
City, ST New Orleans, LA 70119

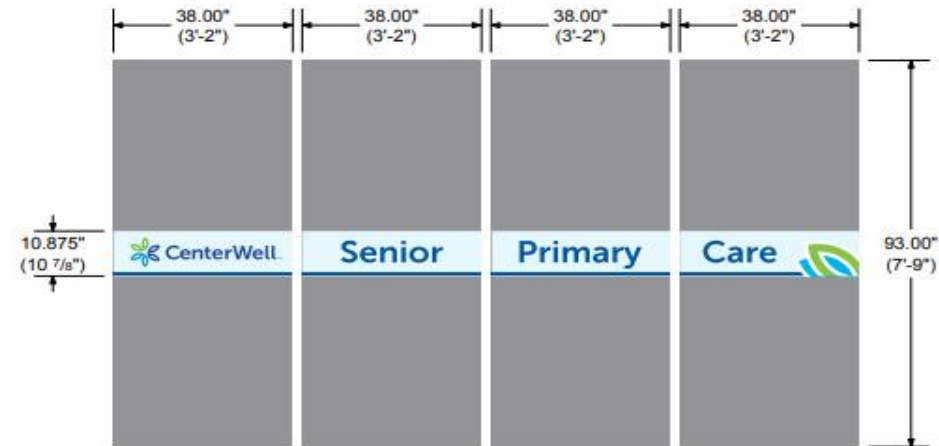
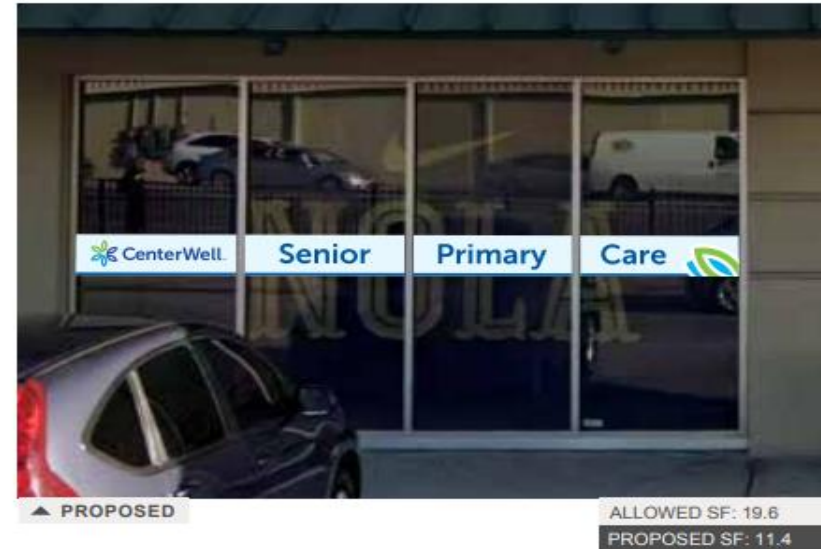
Orig. Draft 10.06.23
Project Mgr. Michelle Schrader
Designer Stephanie Chan

Rev. Art N/A
Rev. Date 00.00.0000
Page Rev. 000

Color Palette
■ PMS 2347C
■ PMS White

Sign Type:
Digitally Printed Vinyl
Graphics, First Surface

Signage:
V2
Regulatory Vinyl



SCALE: 3/8" = 12'



425 N Martingale Rd
18th Floor
Schaumburg, IL 60173
Office 847.301.0510
identiti.net

W.O. No. 33837
Address 4101 South Carrollton Ave
City, ST New Orleans, LA 70119

Orig. Draft 10.06.23
Project Mgr. Michelle Schrader
Designer Stephanie Chan

Rev. Art N/A
Rev. Date 00.00.0000
Page Rev. 000

Color Palette

<input type="checkbox"/> Digital Print	<input type="checkbox"/> N/A
<input type="checkbox"/> N/A	<input type="checkbox"/> N/A
<input type="checkbox"/> N/A	<input type="checkbox"/> N/A

Sign Type:
Perforated Window
Clings, First Surface

Signage:
G1
Window Graphics