



## EBARA ELLIOTT ENERGY

BRL - Baton Rouge  
58035 Industrial Blvd  
Plaquemine, LA 70764




**PHILADELPHIASIGN**  
BRINGING THE WORLD'S BRANDS TO LIFE

[www.philadelphiasign.com](http://www.philadelphiasign.com)

# SIGN INVENTORY

<b>SITE:</b>		BRL - Baton Rouge
SIGN	PAGE	PROPOSED SIGN
E01	2	EEE_NIL_PAN_CUST
N01	3	EEE_NIL_PAN_CUST
N02	4	EEE_NIL_PAN_CUST

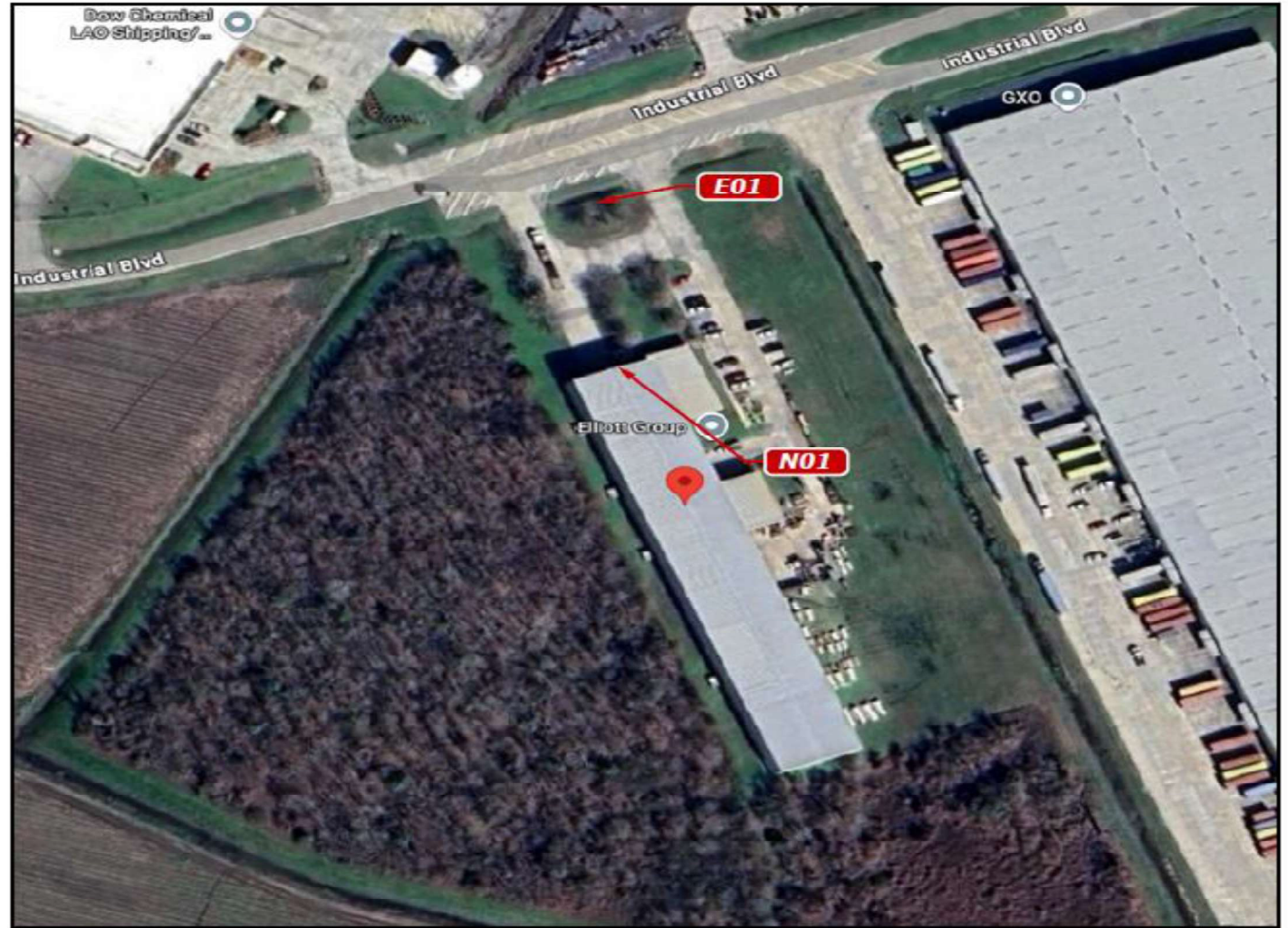
  

  

## DAMMON

ENGINEERING, INC.

LOUISIANA & MISSISSIPPI

Bidell, Louisiana  
PH: 985-649-5992 Fax: 985-641-5990  
www.dammonengineering.com  
info@dammonengineering.com



 <b>PHILADELPHIASIGN</b> BRINGING THE WORLD'S BRANDS TO LIFE	TITLE	Ebara Elliot Energy	DWG BY	JDH	DATE	09.17.25	DATE REVISION BY THIS IS AN ORIGINAL UNPUBLISHED DRAWING CREATED BY P.S.C.O. IT IS SUBMITTED FOR YOUR PERSONAL USE IN CONJUNCTION WITH A PROJECT BEING PLANNED FOR YOU BY P.S.C.O. IT IS NOT TO BE SHOWN TO ANYONE OUTSIDE YOUR ORGANIZATION NOR IS IT TO BE USED, COPIED, REPRODUCED, OR EXHIBITED IN ANY FASHION.
	ADDRESS	BRL - Baton Rouge 58035 Industrial Blvd Plaquemine, LA 70764		DWG NUM	A40890		
	SHEET	1					

E01 EEE\_NIL\_PAN\_CUST 4'h x 4'w x 1-1/2'd Non-Illuminated Aluminum Pan with Vinyl Graphics (4) Required (16 SF)

Proposed




Signs Rendered Proportional to Photo

Existing: 4'h x 4'w

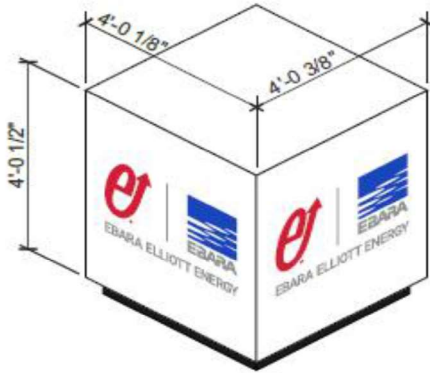


**DAMMON**  
ENGINEERING, INC.

LOUISIANA & MISSISSIPPI  
 Stidell, Louisiana  
 Ph: 985-649-9832 Fax: 985-641-9950  
 www.dammonengineering.com  
 info@dammonengineering.com

 <b>PHILADELPHIASIGN</b> BRINGING THE WORLD'S BRANDS TO LIFE	TITLE	DWG BY	DATE	DATE	REVISION	BY THIS IS AN ORIGINAL UNPUBLISHED DRAWING CREATED BY P.S.C.O. IT IS SUBMITTED FOR YOUR PERSONAL USE IN CONJUNCTION WITH A PROJECT BEING PLANNED FOR YOU BY P.S.C.O. IT IS NOT TO BE SHOWN TO ANYONE OUTSIDE YOUR ORGANIZATION NOR IS IT TO BE USED, COPIED, REPRODUCED, OR EXHIBITED IN ANY FASHION.
	Ebara Elliot Energy		JDH	09.17.25	-	
	ADDRESS	BRL - Baton Rouge 58035 Industrial Blvd Plaquemine, LA 70764		DWG NUM	A40890	
			SHEET	2		

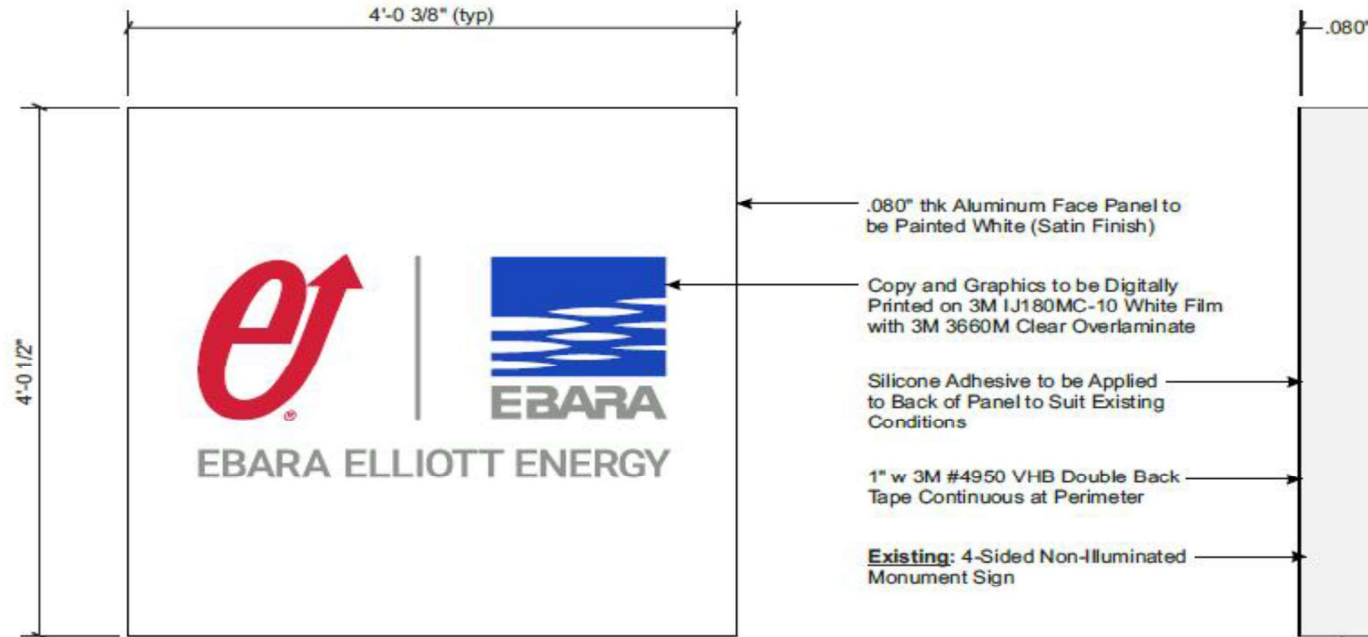
# Face Replacements Only



**4-SIDED MONUMENT  
PANEL REFACE (4) REQUIRED  
ISOMETRIC VIEW  
SCALE: NTS**

**PERMIT  
DRAWING**

**NOTE:** All Dimensions and Field Conditions to be Verified and Confirmed From Tech Survey Prior to Releasing for Fabrication.



**SIGN E01  
4-SIDED MONUMENT  
PANEL REFACE  
FRONT VIEW  
SCALE: 1" = 1'-0"**



**4-SIDED MONUMENT  
PANEL REFACE  
SIDE VIEW  
SCALE: 1" = 1'-0"**

**DAMMON  
ENGINEERING, INC.**  
LOUISIANA & MISSISSIPPI  
Slidell, Louisiana  
PH: 985-649-5932 Fax: 985-641-0950  
www.dammonengineering.com  
info@dammonengineering.com

**PHILADELPHIASIGN**  
BRINGING THE WORLD'S BRANDS TO LIFE  
707 West Spring Garden Street  
Palmyra, New Jersey 08065  
Phone: 856.829.1460  
Fax: 856.829.8549  
www.philadelphiasign.com

**CUSTOMER:**  
**EBARA ELLIOT**  
**JOB NUMBER:**  
**BRL / S124010**

**SIGN TYPE:**  
**VARIOUS**

**LOCATION:**  
**58035 INDUSTRIAL BLVD  
PLAQUEMINE, LA 70764**

**DATE:**  
**2/4/2026**

**DRAWN BY:**  
**GJF**

**REVISION:**  
Number: Date: By:

**SHEET:** 1 OF 2  
ENG DEPT

**DWG NUMBER:**  
**B-116177**

**ENGINEER SEAL:**



**ULTIMATE WIND SPEED 145 MPH  
EXPOSURE C**

**THIS IS AN ORIGINAL UNPUBLISHED DRAWING  
CREATED BY PSCD. IT IS SUBMITTED FOR YOUR  
PERSONAL USE IN CONJUNCTION WITH A PROJECT  
BEING PLANNED FOR YOU BY PSCD. IT IS NOT TO  
BE SHOWN TO ANYONE OUTSIDE YOUR  
ORGANIZATION NOR IS IT TO BE USED, COPIED,  
REPRODUCED, OR EXHIBITED IN ANY FASHION.**

N01 EEE\_NIL\_PAN\_CUST 9'h x 14' 6"w x 2'd Non-Illuminated Aluminum Pan with Vinyl Graphics (130.5 SF)  
 Note: Wall remediation required

**Proposed**



Signs Rendered Proportional to Photo

**Existing**

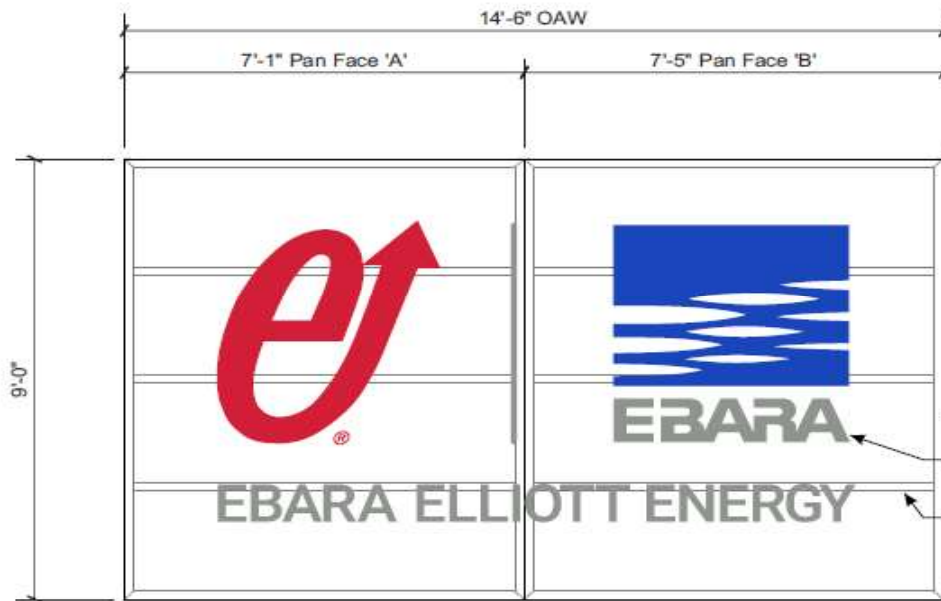


**DAMMON**  
**ENGINEERING, INC.**

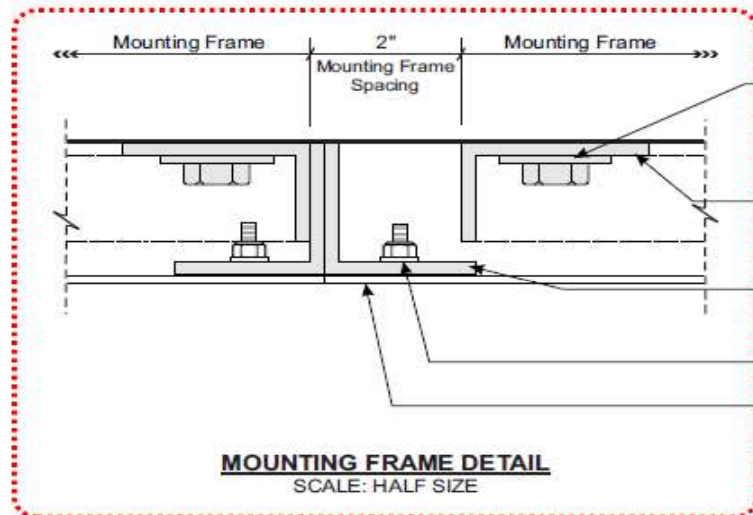
LOUISIANA & MISSISSIPPI  
 Slidell, Louisiana Ph: 985-649-5952 Fax: 985-641-5950 www.dammonengineering.com info@dammonengineering.com



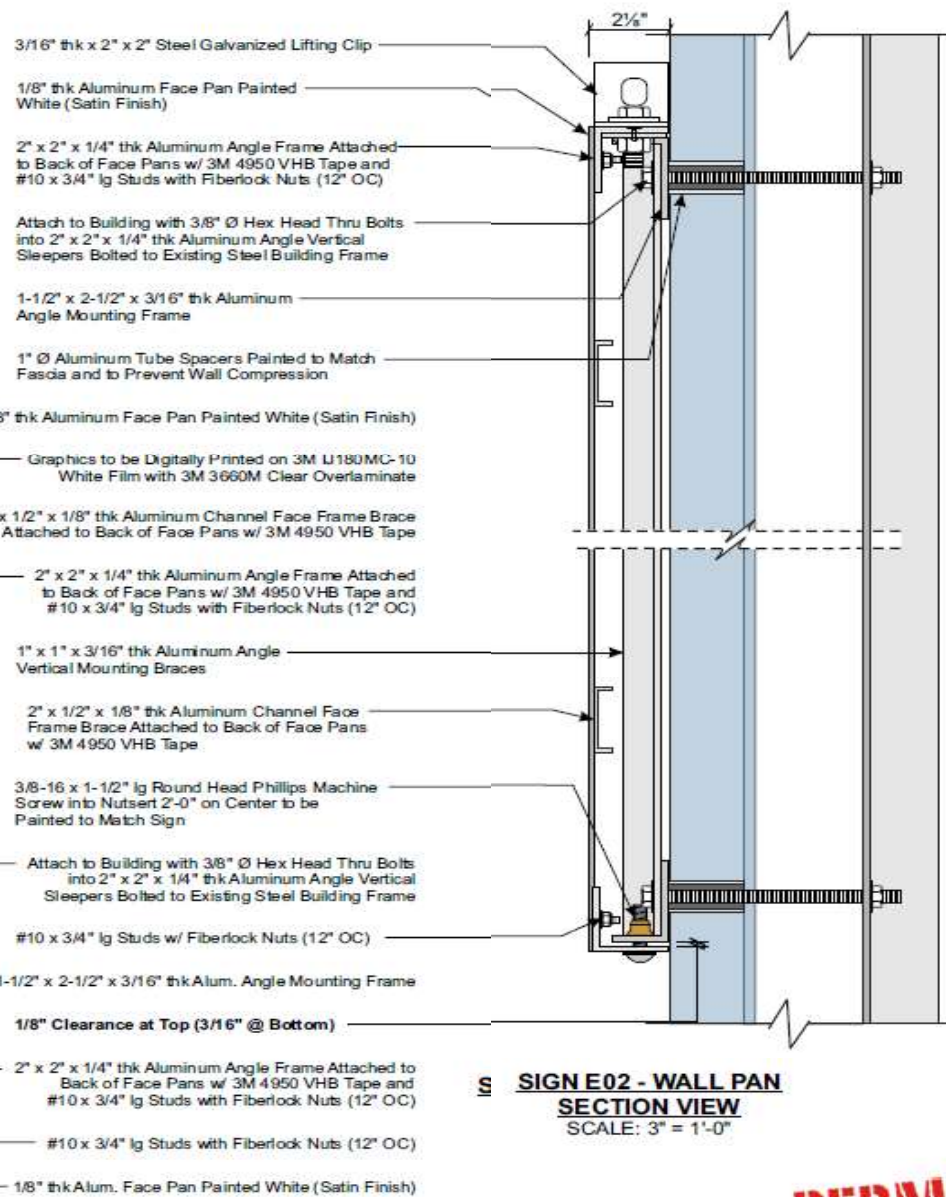
TITLE Ebara Elliot Energy	DWG BY JDH	DATE 09.17.25	DATE -	REVISION	BY	THIS IS AN ORIGINAL UNPUBLISHED DRAWING CREATED BY P.S.C.O. IT IS SUBMITTED FOR YOUR PERSONAL USE IN CONJUNCTION WITH A PROJECT BEING PLANNED FOR YOU BY P.S.C.O. IT IS NOT TO BE SHOWN TO ANYONE OUTSIDE YOUR ORGANIZATION NOR IS IT TO BE USED, COPIED, REPRODUCED, OR EXHIBITED IN ANY FASHION.
ADDRESS BRL - Baton Rouge 58035 Industrial Blvd Plaquemine, LA 70764		DWG NUM A40890				
		SHEET 3				



**SIGN N01 - WALL PAN**  
**FRONT VIEW**  
 SCALE: 3/8" = 1'-0"



**MOUNTING FRAME DETAIL**  
 SCALE: HALF SIZE



**SIGN E02 - WALL PAN**  
**SECTION VIEW**  
 SCALE: 3" = 1'-0"

**DAMMON**  
 ENGINEERING, INC.  
 LOUISIANA & MISSISSIPPI  
 PROFESSIONAL ENGINEERS

**NOTE:** All Dimensions and Field Conditions to be Verified and Confirmed From Tech Survey Prior to Releasing for Fabrication.

**PERMIT DRAWING**



**PHILADELPHIASIGN**  
 BRINGING THE WORLD'S BRANDS TO LIFE

707 West Spring Garden Street  
 Palmyra, New Jersey 08065

Phone: 856.829.1460  
 Fax: 856.829.8549  
 www.philadelphiasign.com

**CUSTOMER:**  
**EBARA ELLIOT**  
**JOB NUMBER:**  
**BRL / S124010**

**SIGN TYPE:**  
**VARIOUS**

**LOCATION:**  
**58035 INDUSTRIAL BLVD**  
**PLAQUEMINE, LA 70764**

**DATE:**  
**2/4/2026**

**DRAWN BY:**  
**GJF**

**REVISION:**  
 Number: Date: By:

**SHEET:** 2 OF 2 ENG DEPT

**DWG NUMBER:**  
**B-116177**



**ULTIMATE WIND SPEED 145 MPH**  
**EXPOSURE C**

THIS IS AN ORIGINAL UNPUBLISHED DRAWING CREATED BY PSCD. IT IS SUBMITTED FOR YOUR PERSONAL USE IN CONJUNCTION WITH A PROJECT BEING PLANNED FOR YOU BY PSCD. IT IS NOT TO BE SHOWN TO ANYONE OUTSIDE YOUR ORGANIZATION NOR IS IT TO BE USED, COPIED, REPRODUCED, OR EXHIBITED IN ANY FASHION.