



ExtraSpaceStorage®

Store #6347

2701 Belle Chasse Hwy

Terrytown, LA 70056

August 27, 2024

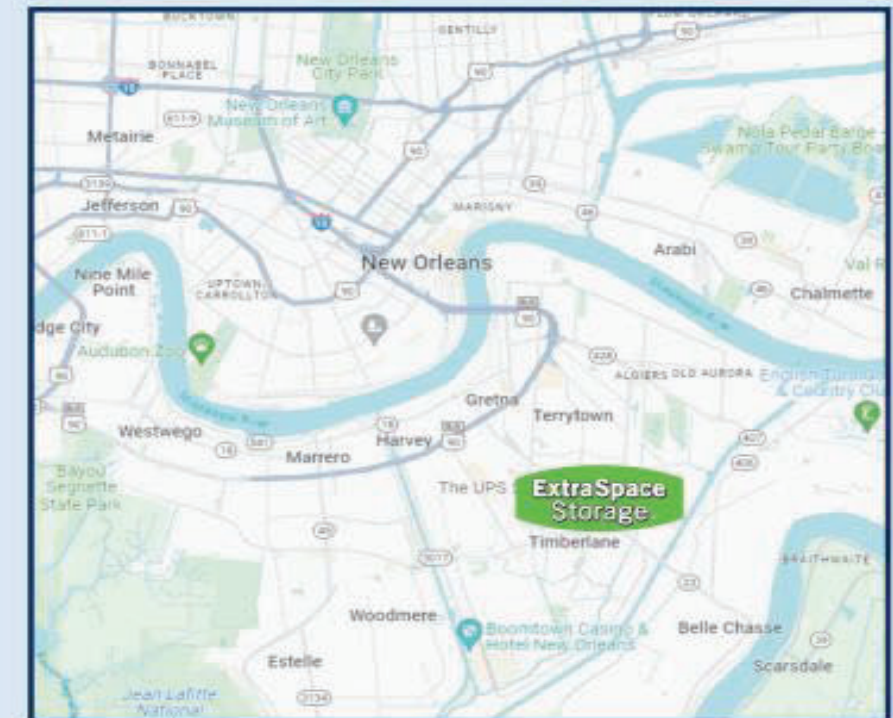
Site Overview

	Proposed Sq.Ft.	Existing Sq.Ft.	Allowed Sq.Ft.
P1	66.36 sqft	N/A	N/A
P2	2.08 sqft	N/A	N/A



Site Overview — Proposed Signs

Scale: None



Aerial Map

378'6"

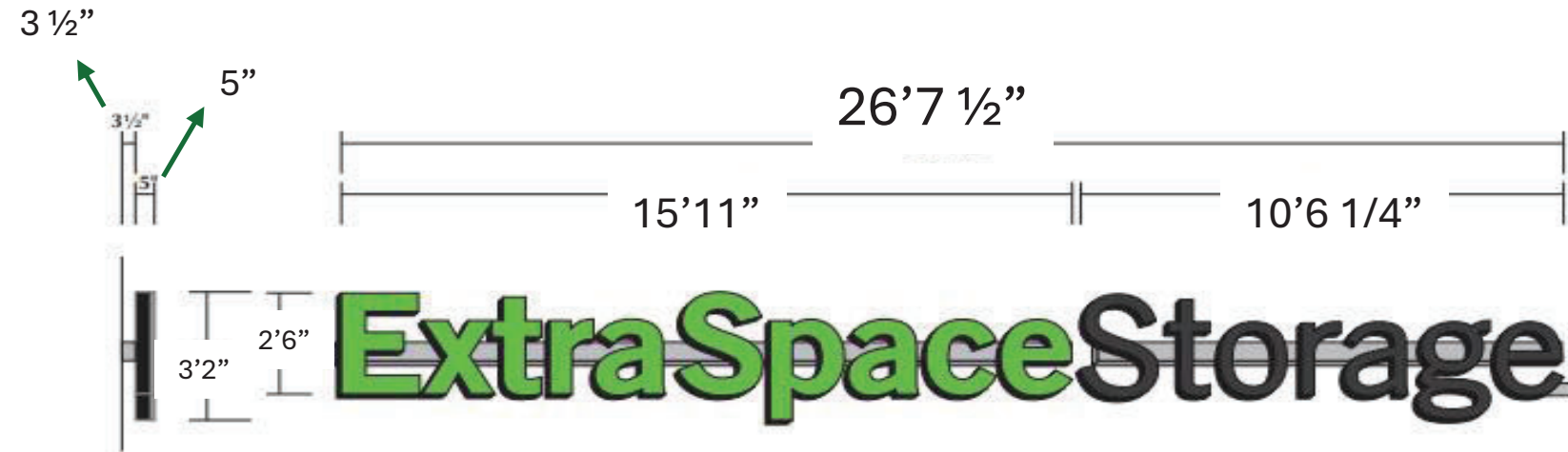


Southwest Elevation

Scale: None



P1



Illuminated Channel Letters (Raceway)

Illuminated Channel Letters

Construction
 5" Deep, .040 aluminum returns.
 3mm ACM backs.
 Paint with GripCard EFX semi-gloss enamel.

Faces
 Flat translucent white polycarbonate.
 Jewelite trim.
 Applied pressure sensitive vinyl.

Electrical/Illumination
 White LEDs powered by low voltage power supplies.

Raceway/Mounting
 3 1/2" x 5 1/2" SignComp #1970N/#1976N aluminum raceway/cover mounted to facade.
 SignComp #5988/#5989 mounting clips.

Note: 'e' To be painted flat ACM attached to rear of 'e'.

Electrical Notes: All electrical components to be UL approved Customer is responsible for one (1) 120v/20a dedicated circuit with ground per sign within 6' of sign Lock out switch installed at panel box for all electrical signs Install in accordance with N.E.C. article 600 and/or local codes. This includes proper grounding and bonding of signs

P1 ESS CL30-1LG-R Illuminated Channel Letters (Raceway)

Scale: 1/4" = 1'-0"



Night Time View



Existing Elevation



Proposed Elevation



This sign is intended to be installed in accordance with the requirements of Article 600 of the National Electrical Code and/or other applicable local codes. This includes proper grounding and bonding of the sign.

	Proposed Sq.Ft.	Existing Sq.Ft.	Allowed Sq.Ft.
P1	66.56	N/A	N/A

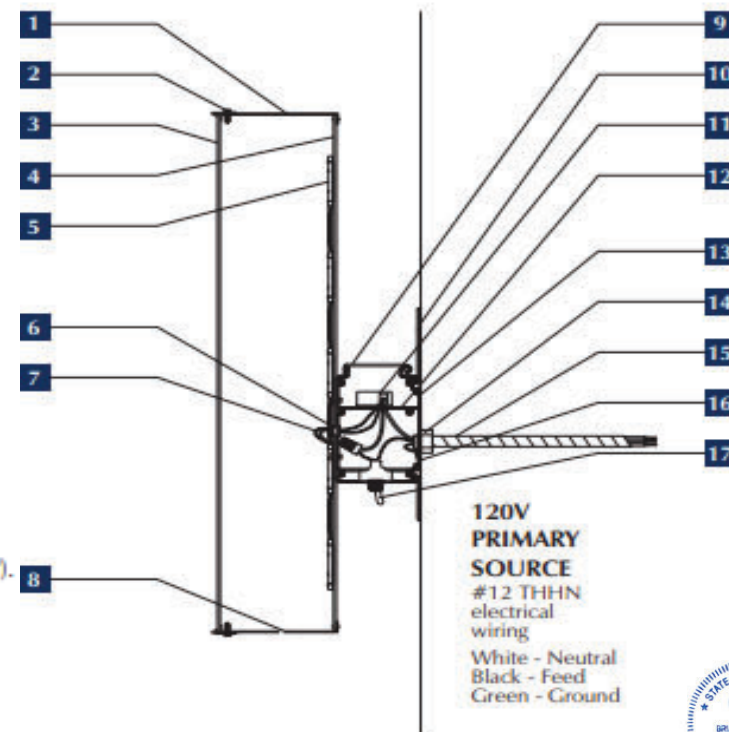
ExtraSpaceStorage

Illuminated Channel Letters Details (Raceway)

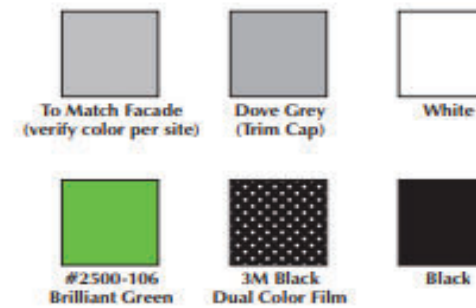
Specifications

- 1 .040 Aluminum letter sides.
- 2 Trim cap with #8 x 1/2" hex head screws as needed.
- 3 Flat polycarbonate faces.
- 4 3mm ACM letter back. Letter sides/back's stitched together and continuously siliconed.
- 5 LED system.
- 6 Pre-drilled low voltage electrical hole with plastic grommet.
- 7 Low voltage wiring from power supply.
- 8 1/4" Weep holes at low points of letters with internal light baffle.
- 9 SignComp 5" narrow channel letter raceway cover (part #1976N).
- 10 SignComp channel letter raceway mounting clip (part #5988).
- 11 Low voltage LED power supplies (120 volt circuit required).
- 12 SignComp 5" narrow channel letter raceway brace/bracket (part #5972N-5").
- 13 SignComp 5" narrow channel letter raceway (part #1970N).
- 14 1/2" Sealtite connector.
- 15 1/2" Sealtite conduit.
- 16 Ground wire fixed to power supply box.
- 17 20 Amp toggle disconnect (to be on end of raceway, shown on bottom for illustrative purposes only).

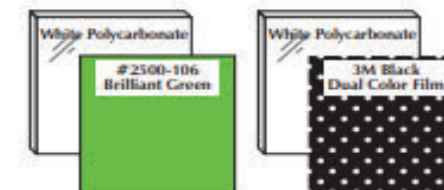
Section View: Illuminated Channel Letter



Color Specifications



Face Specifications



Notes:

Electrical Notes: All electrical components to be UL approved Customer is responsible for one (1) 120v/20a dedicated circuit with ground per sign within 6' of sign. Lock out switch installed at panel box for all electrical signs. Install in accordance with N.E.C. article 600 and/or local codes. This includes proper grounding and bonding of signs.

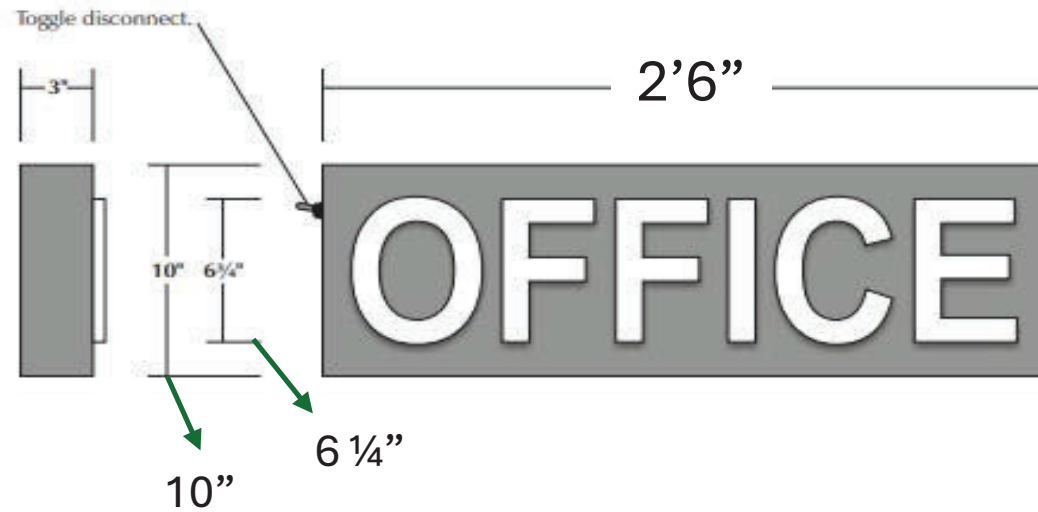
Mounting Details

SECTION				
ANCHOR	Stainless Lag Bolt	Stainless Lag Bolt & Lead Shield	Threaded Rod/Thru-Bolt	Threaded Rod Toggle Bolt
WALL	Wood Stud	Concrete/Masonry	Metal Stud	Various



This sign is intended to be installed in accordance with the requirements of Article 600 of the National Electrical Code and/or other applicable local codes. This includes proper grounding and bonding of the sign.

P2



Illuminated Office Wall Sign — ESS OWS10-PTW

Single Faced Illuminated Office Wall Sign

Construction

Custom fabricated .100 aluminum.
Paint with GripGard EFX semi-gloss enamel.

Faces

Precision routed .100 aluminum backed with 3/4" white push-thru acrylic.

Electrical/Illumination

White LEDs powered by low voltage power supplies.

Mounting

Flush to facade.

Electrical Notes: All electrical components to be UL approved Customer is responsible for one (1) 120v/20a dedicated circuit with ground per sign within 6' of sign Lock out switch installed at panel box for all electrical signs Install in accordance with N.E.C. article 600 and/or local codes. This includes proper grounding and bonding of signs

P2 Single Faced Illuminated Office Wall Sign — ESS OWS10-PTW

Scale: 1 1/2" = 1'-0"



Night Time View



Existing Elevation



Proposed Elevation



This sign is intended to be installed in accordance with the requirements of Article 600 of the National Electrical Code and/or other applicable local codes. This includes proper grounding and bonding of the sign.

	Proposed Sq.Ft.	Existing Sq.Ft.	Allowed Sq.Ft.
P2	2.08	N/A	N/A

P2



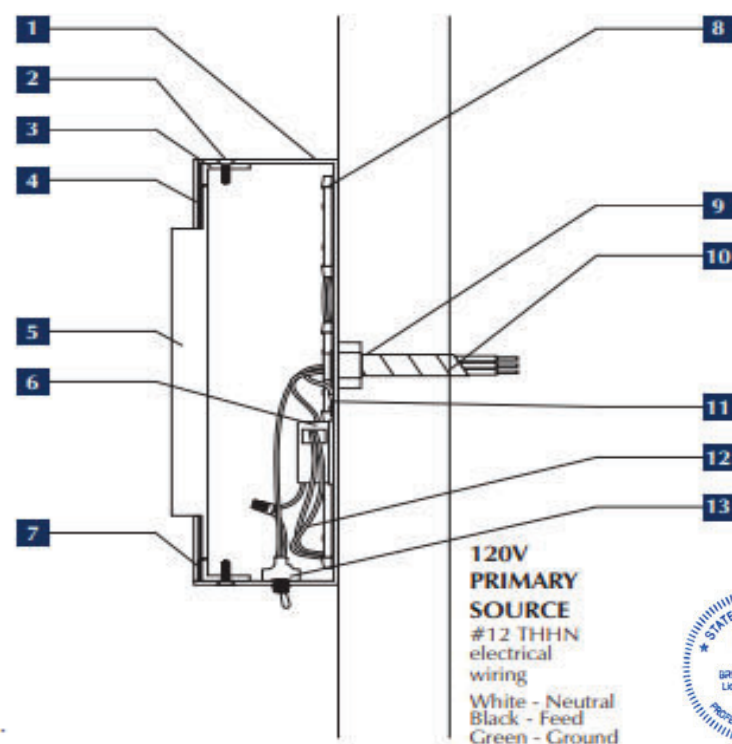
Illuminated Office Wall Sign Details — ESS OWS10-PTW

Notes:
 Electrical Notes: All electrical components to be UL approved Customer is responsible for one (1) 120v/20a dedicated circuit with ground per sign within 6' of sign Lock out switch installed at panel box for all electrical signs Install in accordance with N.E.C. article 600 and/or local codes. This includes proper grounding and bonding of signs

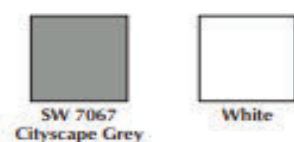
Specifications

- 1 Custom fabricated .100 aluminum sign cabinet.
- 2 #10 x 1/2" Countersunk screws as needed.
- 3 1/2" x 1" x .125 Aluminum angle.
- 4 .100 Routed aluminum face.
- 5 3/4" Thick "push thru" white acrylic (1/8" shoulder).
- 6 Low voltage LED power supplies (120 volt circuit required).
- 7 VHB adhesive (typ.).
- 8 LED system.
- 9 1/2" Sealite connector.
- 10 1/2" Sealite conduit.
- 11 Ground wire.
- 12 Low voltage wiring from power supply.
- 13 20 Amp toggle disconnect (shown on bottom for illustrative purposes only).

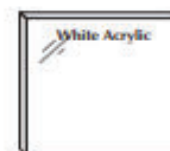
Section View: Illuminated Office Wall Sign



Color Specifications



Face Specifications



Mounting Details

SECTION				
ANCHOR	Stainless Lag Bolt	Stainless Lag Bolt & Lead Shield	Threaded Rod/ Thru-Bolt	Threaded Rod Toggle Bolt
WALL	Wood Stud	Concrete/Masonry	Metal Stud	Various

