

Fresenius Kidney Care – 7325 Westbank Expressway Marrero, LA 70072



● Pre-existing/Proposed Monument Sign Placement

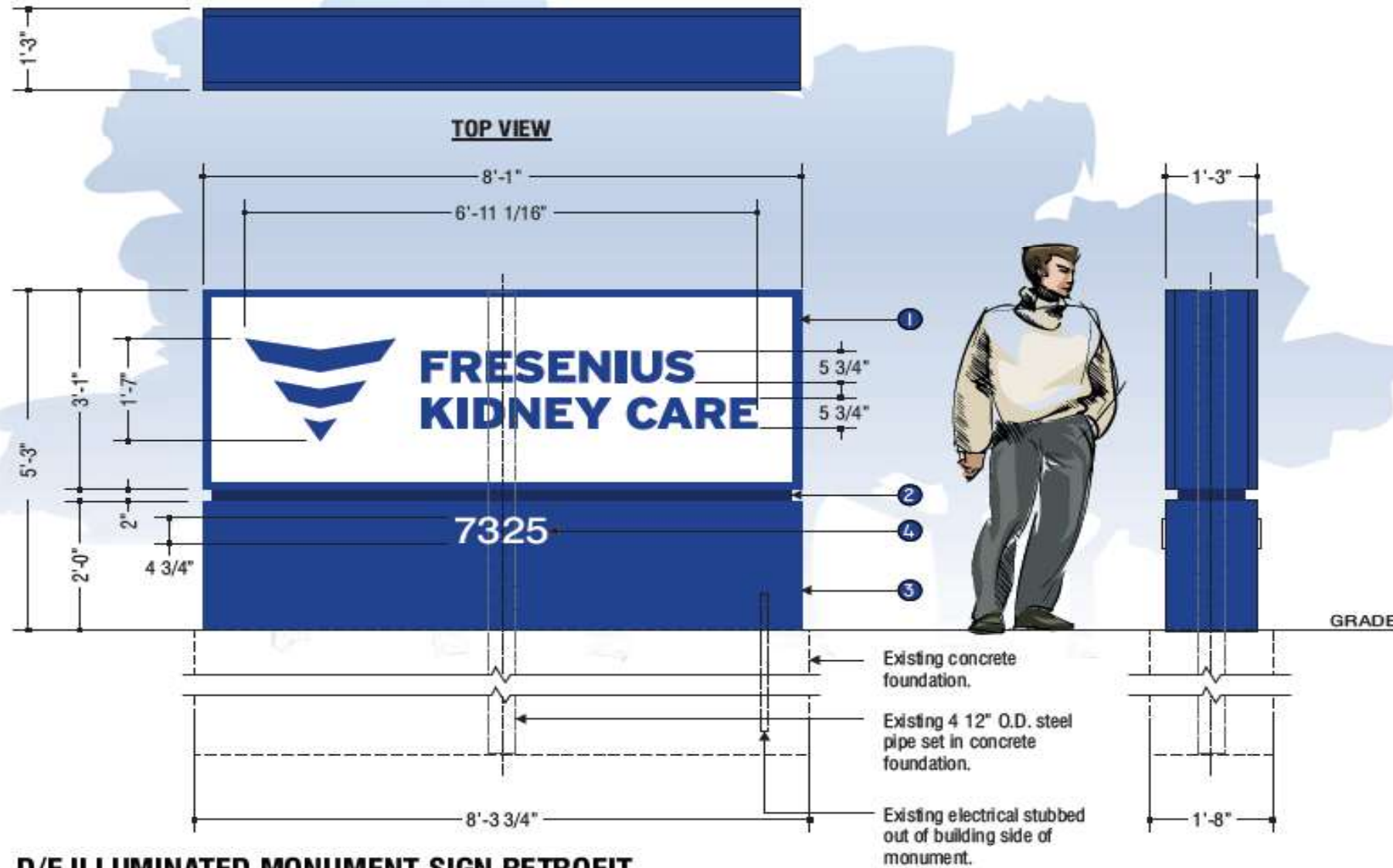
Westbank Expressway





SITE IDENTIFICATION

*D/F Internally Illuminated Monument Sign
Retrofit of Mon-8*



D/F ILLUMINATED MONUMENT SIGN RETROFIT

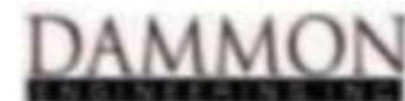
Area = 42.43 Sq. Ft.

Scale: 1/2" = 1'-0"

General Specifications

- 1 Main cabinet to be fabricated using welded tubular aluminum framing w/ aluminum filler & retainers. Faces to be White polycarbonate w/ flat cut 3M vinyl logotype graphics applied to 1st surface - SEE COLOR SCHEDULE. Cabinet retainers & filler to have a Corporate Blue painted finish - SEE COLOR SCHEDULE. Faces to be illuminated w/ Sloan White Prism LED's per manufacturing specifications. Monument sign is a standard Fresenius Mon 8 fabrication.
Note:
Cabinet to be installed w/ a saddle mount over existing steel pipe support - SEE Survey photos.
- 2 Fabricated 2" high .125 aluminum folded/welded reveal to have a Corporate Blue painted finish - SEE COLOR SCHEDULE.
- 3 Monument base to be fabricated w/ welded aluminum tube framing w/ .090 aluminum face & filler. Face & filler to have a Corporate Blue painted finish - SEE COLOR SCHEDULE.
- 4 Flat cut out 1/4" aluminum street address to be stud mounted flush to face of base. Numerals have a White painted finish - SEE COLOR SCHEDULE.
- 5 Existing 4 1/2" O.D. Steel pipe support is direct buried in existing foundation. Cabinet to sleeve over existing pipe.

Pre-existing concrete foundation to be reused



ACCOUNT: **FRESENIUS KIDNEY CARE No. 1191**
 LOCATION: **7325 Westbank Expressway - Marrero, LA**
 ACCT. REP: **M. Arroyo** DESIGNER: **MAX**
 DATE: **10/17/25**
 COMPANION FILES: _____



| REVISIONS: | INITIALS & DATE: |
|----------------------|------------------|
| 1 Update per survey. | MAK 10/21/25 |
| 2 | - |
| 3 | - |
| 4 | - |
| 5 | - |
| 6 | - |
| 7 | - |
| 8 | - |
| 9 | - |
| 10 | - |

This is an original unpublished drawing submitted for use in connection with a project being planned for you by PSCO Kieffer. It is not to be reproduced, copied or exhibited in any fashion without the written permission of PSCO Kieffer.

Phone: 920.458.4394
 pscosigngroup.com

PK2500628

Existing

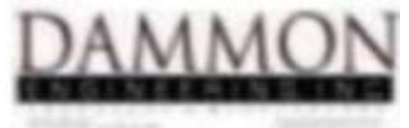


EXISTING MONUMENT SIGN TO BE REMOVED
42.43 Square feet

Proposed



PROPOSED MONUMENT SIGN
42.43 Square feet




PSCO KIEFFER
BRINGING THE WORLD'S BRANDS TO LIFE
a Philadelphia Sign Company

ACCOUNT: **FRESENIUS KIDNEY CARE No. 1191**
 LOCATION: **7325 Westbank Expressway - Marrero, LA**
 ACCT. REP: **M. Arroyo** DESIGNER: **MAK**
 DATE: **10/17/25**
 COMPANION FILES: _____



| REVISIONS: | INITIALS & DATE: |
|------------|------------------|
| A - | - |
| B - | - |
| C - | - |
| D - | - |
| E - | - |
| F - | - |
| G - | - |
| H - | - |

This is an original unpublished drawing submitted for use in connection with a project being planned for you by PSCO Kieffer. It is not to be reproduced, copied or exhibited in any fashion without the written permission of PSCO Kieffer.

Phone: 920.458.4394
pscosigngroup.com

PK2500628A