

Fresenius Kidney Care – 7325 Westbank Expressway Marrero, LA 70072

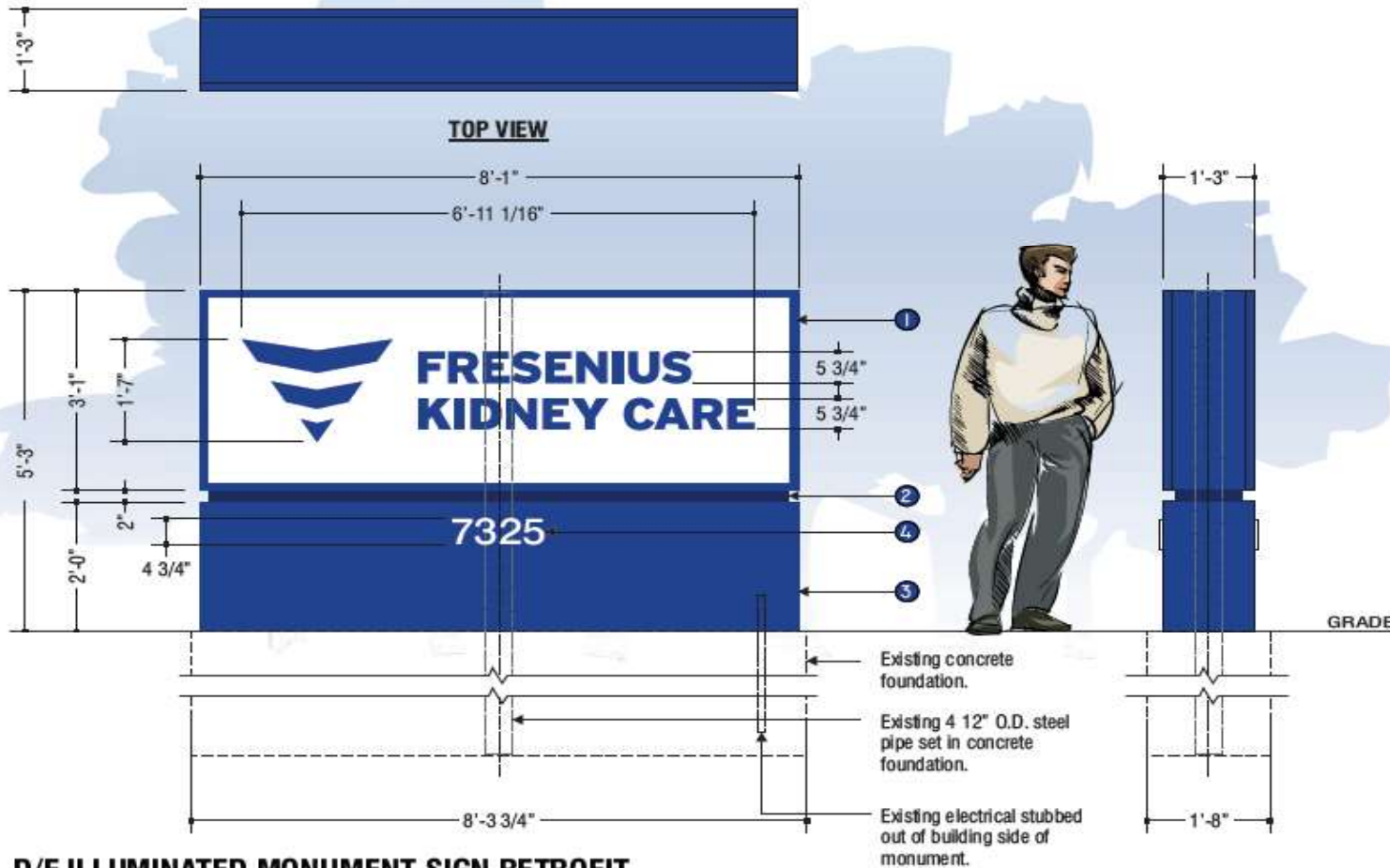
● Pre-existing/Proposed Monument Sign Placement





**SITE IDENTIFICATION**

*D/F Internally Illuminated Monument Sign  
Retrofit of Mon-8*



**D/F ILLUMINATED MONUMENT SIGN RETROFIT**

Area = 42.43 Sq. Ft.

Scale: 1/2" = 1'-0"

**General Specifications**

- 1 Main cabinet to be fabricated using welded tubular aluminum framing w/ aluminum filler & retainers. Faces to be White polycarbonate w/ flat cut 3M vinyl logotype graphics applied to 1st surface - SEE COLOR SCHEDULE. Cabinet retainers & filler to have a Corporate Blue painted finish - SEE COLOR SCHEDULE. Faces to be illuminated w/ Sloan White Prism LED's per manufacturing specifications. Monument sign is a standard Fresenius Mon 8 fabrication.  
**Note:**  
Cabinet to be installed w/ a saddle mount over existing steel pipe support - SEE Survey photos.
- 2 Fabricated 2" high .125 aluminum folded/welded reveal to have a Corporate Blue painted finish - SEE COLOR SCHEDULE.
- 3 Monument base to be fabricated w/ welded aluminum tube framing w/ .090 aluminum face & filler. Face & filler to have a Corporate Blue painted finish - SEE COLOR SCHEDULE.
- 4 Flat cut out 1/4" aluminum street address to be stud mounted flush to face of base. Numerals have a White painted finish - SEE COLOR SCHEDULE.
- 5 Existing 4 1/2" O. D. Steel pipe support is direct buried in existing foundation. Cabinet to sleeve over existing pipe.

Pre-existing concrete foundation to be reused



ACCOUNT: **FRESENIUS KIDNEY CARE No. 1191**

LOCATION: **7325 Westbank Expressway - Marrero, LA.**

ACCT. REP: **M. ARROYO** DESIGNER: **MAX**

DATE: **10/17/25**

COMPANION FILES



REVISIONS:	INITIALS & DATE
1 Update per survey.	MAK 10/21/25
2	-
3	-
4	-
5	-
6	-
7	-
8	-
9	-

This is an original unregistered drawing submitted for use in connection with a project being planned for you by PSCO Kieffer. It is not to be reproduced, copied or exhibited in any fashion without the written permission of PSCO Kieffer.

Phone: 920.458.4394  
pscosigngroup.com

**PK2500628**

Existing



**EXISTING MONUMENT SIGN TO BE REMOVED**  
42.43 Square feet


Proposed



**PROPOSED MONUMENT SIGN**  
42.43 Square feet




**PSCO KIEFFER**  
BRINGING THE WORLD'S BRANDS TO LIFE  
a Philadelphia Sign Company

ACCOUNT: <b>FRESENIUS KIDNEY CARE No. 1191</b>	REVISIONS:	INITIALS & DATE:
LOCATION: <b>7325 Westbank Expressway - Marrero, LA</b>	1 -	-
ADCT. REP: <b>M. Arroyo</b> DESIGNER: <b>MAK</b>	2 -	-
DATE: <b>10/17/25</b>	3 -	-
COMPANION FILES	4 -	-
	5 -	-
	6 -	-
	7 -	-
	8 -	-
	9 -	-

This is an original unpublished drawing submitted for use in connection with a project being planned for you by PSC0 Kieffer. It is not to be reproduced, copied or exhibited in any fashion without the written permission of PSC0 Kieffer.

Phone: 920.458.4394  
pscosigngroup.com

**PK2500628A**