

PROJECT SCHEDULE

SIGN TYPE/ DESCRIPTION:	QTY.:	PG.
A. ILLUMINATED SIGN CABINET W/ FAUX-NEON PUSH-THRU COPY	ONE (1)	3

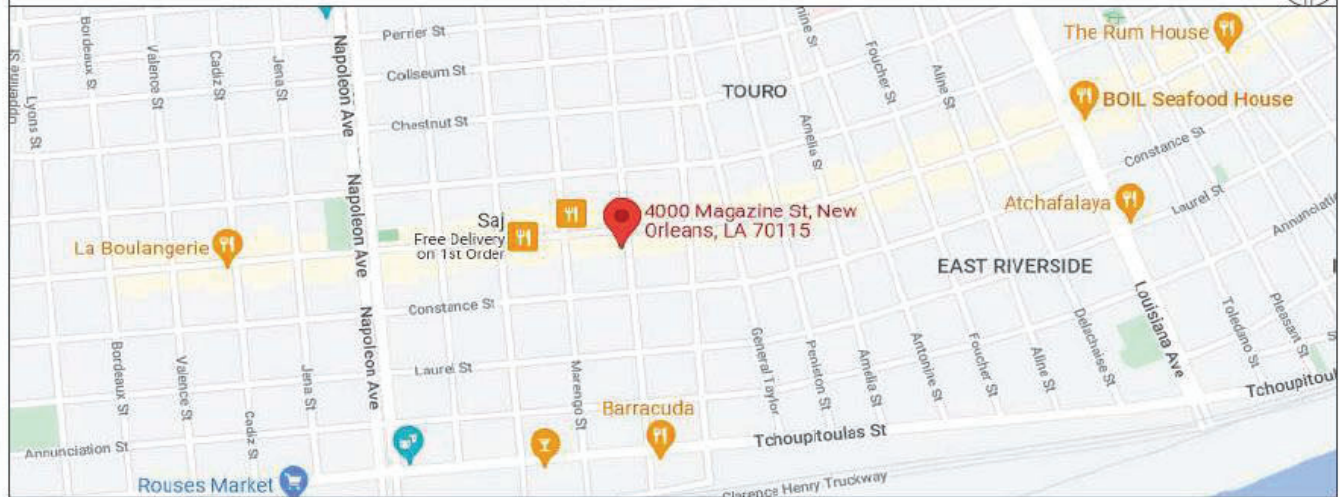


4000 MAGAZINE STREET
NEW ORLEANS, LA 70115

REVISIONS

#	DATE	DB	NOTES
R1	5/12/2022	MAF	REVISED PER EMAIL/MARKUPS.
R2	5/27/2022	MAF	REVISED SECTION DETAIL PER COMMENTS.

VICINITY MAP



	CLIENT & LOCATION 	LEAD NO. 205051 R2	DATE 4/20/2022	REVIEWED BY MAF	REVISION	SHEET NO. 1 of 4
		SALESMAN S. ALTSHULER	DRAWN BY MAF	SEG. NO.		



STOREFRONT ELEVATION

1

SCALE: N.T.S.

Electrical Notes: All electrical components to be UL approved Customer is responsible for one (1) 120v/20a dedicated circuit with ground per sign within 6' of sign Lock out switch installed at panel box for all electrical signs Install in accordance with N.E.C. article 600 and/or local codes. This includes proper grounding and bonding of signs



EXISTING

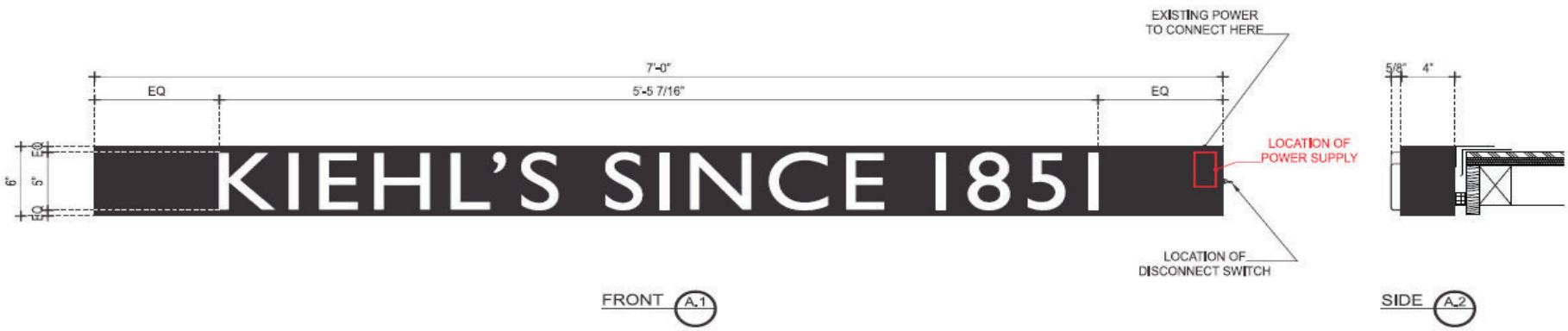


	CLIENT & LOCATION 	LEAD NO. 205051 R2	DATE 4/20/2022	REVIEWED BY	REVISION	SHEET NO. 2 of 4
		SALESMAN S. ALTSHULER	DRAWN BY MAF	SEG. NO.		
11 AZAR COURT • P.O. BOX 24186 • BALTIMORE, MARYLAND 21227 • T: 410-247-5300 • F: 410 247-1944 • REPRODUCTION IN WHOLE OR PART PROHIBITED WITHOUT EXPRESS PERMISSION OF TRIANGLE S & S • WWW.TRIANGLESIGN.COM						

ILLUMINATED SIGN CABINET W/ FAUX-NEON PUSH-THRU COPY

A

SCALE: 1 1/2" = 1'-0"
 QTY: ONE (1)
 AREA: 6' x 84" = 3,50' ±



LED LAYOUT A.3

Electrical Notes: All electrical components to be UL approved
 Customer is responsible for one (1) 120v/20a dedicated circuit
 with ground per sign within 6' of sign Lock out switch installed at
 panel box for all electrical signs Install in accordance with N.E.C.
 article 600 and/or local codes. This includes proper grounding
 and bonding of signs

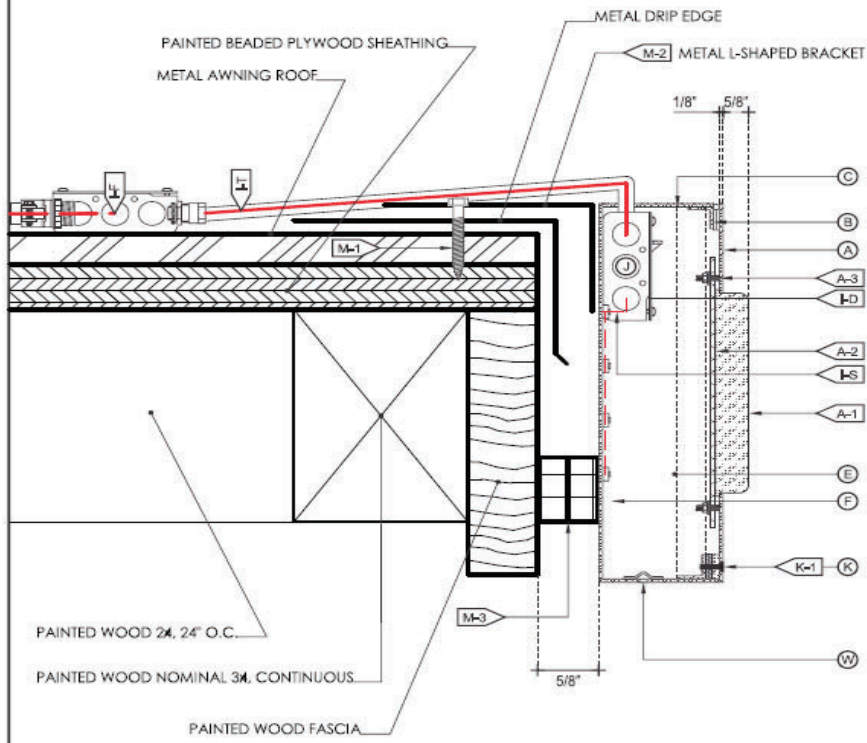


TRIANGLE SIGN SERVICES SINCE 1981	CLIENT & LOCATION <i>Kiehl's</i> 4000 MAGAZINE STREET NEW ORLEANS, LA 70115	LEAD NO. 205051 R2	DATE 4/20/2022	REVIEWED BY	REVISION	SHEET NO. 3 of 4
		SALESMAN S. ALTSHULER	DRAWN BY MAF	SEG. NO.		

ILLUMINATED SIGN CABINET W/ FAUX-NEON PUSH-THRU COPY - SECTION DETAIL

SCALE: N.T.S.

A-1
SECTION



(A) FACE	
MATERIAL:	1/8" ALUM. w/ ROUTED LOGOTYPE.
COLOR/ FINISH:	SEE COLOR KEY/ SATIN.
A-1: FAUX NEON	3/4"D / 1/2"W ROUNDED TRANSLUCENT WHITE ACRYLIC
PUSH-THRU	w/ 1/4" W KIRF EDGE (5/8" PROUD OF CABINET FACE).
A-2: BACK-UP	3/16" WHITE ACRYLIC.
A-3: MNTG.	WELDED 10-24 STUD & NUT.
(B) HINGE	
TYPE:	1" PIANO HINGE w/ 1" x 1" ALUM. ANGLE @ TOP.
(C) RETURN	
DEPTH:	4" DEEP
MATERIAL:	±0.125" ALUM.
COLOR/ FINISH:	SEE COLOR KEY/ SATIN.
(D) BACK	
MATERIAL:	±0.125" ALUM.
COLOR/ FINISH:	SEE COLOR KEY/ SATIN.
(E) INSIDE OF CABINET	
COLOR/ FINISH:	PAINT WHITE.
(F) ILLUMINATION	
TYPE:	6500K WHITE LEDS, SEE ILLUM. NOTE.
(W) WEEP HOLE	
TYPE:	1/4"Ø HOLE w/ COVER @ 4"Ø O.C.

(I) WIRING	
I-F:	SEE ELEC. NOTE, 120V PRIMARY IN J-BOX BY OTHERS.
I-T:	12awg FEED IN 1/2"Ø SEAL-TITE w/ CONNECTORS. NOTE: THRU TOP RIGHT OF CABINET.
I-S:	UL APPROVED CLASS II LOW VOLTAGE WIRING.
I-D:	DISCONNECT SWITCH. NOTE: @ RIGHT END OF CABINET
(J) POWER SUPPLY	
TYPE:	INSTALLED IN RIGHT SIDE OF CABINET. INTERNAL LED POWER SUPPLY & DISCONNECT SWITCH. TYP. J-BOX TO HOUSE ELEC. CONNECTION TO PRIMARY.
VOLTAGE:	120V.
(K) HOLD CLOSE	
TYPE:	(CONTINUOUS W/ METHOD TO EASILY OPEN)
MATERIAL:	1/4" ALUM. FLATBAR @ BACK OF FACE w/ VELCRO CLOSURE TO 1" x 1" ALUM. ANGLE @ SIDES & BOTTOM. K-1: COUNTER-SUNK SCREWS TO SECURE.
(M) MOUNTING	
M-1:	ENSURE FASTENERS PENETRATE THE ROOF AT EXISTING SCREW HOLES.
M-2:	1" X 2" X 1/8" ALUMINUM ANGLE.
M-3:	RUBBERIZED SPACERS/STANDOFFS AS NEEDED.
COLOR/ FINISH:	BLACK/ SATIN.

Electrical Notes: All electrical components to be UL approved Customer is responsible for one (1) 120v/20a dedicated circuit with ground per sign within 6' of sign Lock out switch installed at panel box for all electrical signs Install in accordance with N.E.C. article 600 and/or local codes. This includes proper grounding and bonding of signs



120V INSTALL

- CUSTOMER G.C. TO PROVIDE ADEQUATE WOOD OR MTL. BLOCKING IN CORRELATION W/ FACADE FRAMING AS REQUIRED. **EXISTING**
- INSTALLER IS TO V.I.F. & PROVIDE THE PROPER NON-CORROSIVE MOUNTING HARDWARE TO ENSURE SAFE INSTALLATION.
- ALL EXTERIOR FACADE PENETRATIONS TO BE WATERTIGHT.
- INSTALLATION TO MEET CURRENT N.E.C., U.L. & LOCAL CODES. LOCATION OF THE DISCONNECT SWITCH AFTER INSTALLATION SHALL COMPLY WITH ARTICLE 600.6(A) (1) OF THE NATION ELECTRICAL CODE

ELECTRICAL

- ALL ELECTRICAL COMPONENTS TO BE U.L. APPROVED.
- CUSTOMER IS RESPONSIBLE FOR ONE (1) 120v/20a DEDICATED CIRCUIT w/ GROUND PER SIGN TO WITHIN 6' OF SIGN. **EXISTING**
- THIS SIGN IS INTENDED TO BE INSTALLED IN ACCORDING W/ THE REQUIREMENTS OF ARTICLE 600 OF THE NATIONAL ELECTRICAL CODE AND/OR OTHER APPLICABLE LOCAL CODES. THIS INCLUDES PROPER GROUNDING & BONDING OF THE SIGN.

FABRICATOR

- PLACEMENT OF LIGHTING ELEMENTS FOR OPTIMUM ILLUMINATION OF SIGN TO BE DETERMINED IN PRODUCTION.
- MANUFACTURER & U.L. LABELS TO BE APPLIED & VISIBLE FROM THE GROUND. LOCATED ON THE LAST CHANNEL LETTER OR END OF THE SIGN BOX/FREESTANDING SIGN

ENSURE NO LIGHT LEAKS

UL ALL ELECTRICAL COMPONENTS ARE TO BE UL APPROVED

	CLIENT & LOCATION	LEAD NO.	DATE	REVIEWED BY	REVISION	SHEET NO. 4 of 4
		205051 R2	4/20/2022			
4000 MAGAZINE STREET NEW ORLEANS, LA 70115		SALESMAN S. ALTSCHULER	DRAWN BY MAF	SEG. NO.		

11 AZAR COURT • P.O. BOX 24186 • BALTIMORE, MARYLAND 21227 • T: 410-247-5300 • F: 410-247-1944 • REPRODUCTION IN WHOLE OR PART PROHIBITED WITHOUT EXPRESS PERMISSION OF TRIANGLE S & S • WWW.TRIANGLESIGN.COM