

Michaels

"For purposes of signage only. No elevation approval contained herein."

STORE IDENTIFICATION PROGRAM PROPOSED SIGNS FOR:

METARRIE, LA
STORE: # 9952

by:



PSCO KIEFFER

BRINGING THE WORLD'S BRANDS TO LIFE

a Philadelphia Sign Company



SITE IDENTIFICATION
Aerial Site Plan w/ Sign Locations

"For purposes of signage only. No elevation approval contained herein."



New Illuminated Michaels Letters on Front Elevation

D/F Pylon Sign w/ Proposed New Michaels Tenant Faces




SITE PLAN




PSCo KIEFFER
BRINGING THE WORLD'S BRANDS TO LIFE
a Philadelphia Sign Company

ACCOUNT: Michael's Store #9952
 LOCATION: 8851 Veterans Memorial Blvd. - Metairie, LA
 ACCE. REP: HOUSE DESIGNER: MAK
 DATE: 4/2/24
 COMPANION FILES



REVISIONS:	INITIALS & DATE:
A	-
B	-
C	-
D	-
E	-
F	-
G	-
H	-

This is an original unpublished drawing submitted for use in connection with a project being planned for you by PSCo Kieffer. It is not to be reproduced, copied or exhibited in any fashion without the written permission of PSCo Kieffer.

Phone: 920.458.4394
pscosigngroup.com

SITE PLAN

Landlord Signature: _____ Printed Name: _____ Company: _____ Date: _____



"For purposes of signage only. No elevation approval contained herein."

SITE IDENTIFICATION
Storefront Elevation - New Illuminated Letters



Install Note:
Install New 7' - 0" Illuminated Letters flush to fascia, reference Drawing **PK2400168A** for fabrication specifications.
Area of new letter set = 186.34 Sq. Ft.



Removal Note:
Remove existing Michaels & category letters.
Patch & paint fascia as required.

PROPOSED NEW LETTERS ON STOREFRONT ELEVATION

EXISTING LETTERS ON STOREFRONT ELEVATION

Note:
Area of existing Michaels Letters = 199.79 Sq. Ft.



ACCOUNT: Michael's Store #9952
LOCATION: 8851 Veterans Memorial Blvd. - Metairie, LA
ACCT. REP: HOUSE DESIGNER: MAK
DATE: 4/2/24
COMPANION FILES: _____

REVISIONS:	INITIALS & DATE:
A	-
B	-
C	-
D	-
E	-
F	-
G	-
H	-

This is an original unpublished drawing submitted for use in connection with a project being planned for you by PSCO Kieffer. It is not to be reproduced, copied or exhibited in any fashion without the written permission of PSCO Kieffer.

Phone: 920.458.4394
pscosigngroup.com

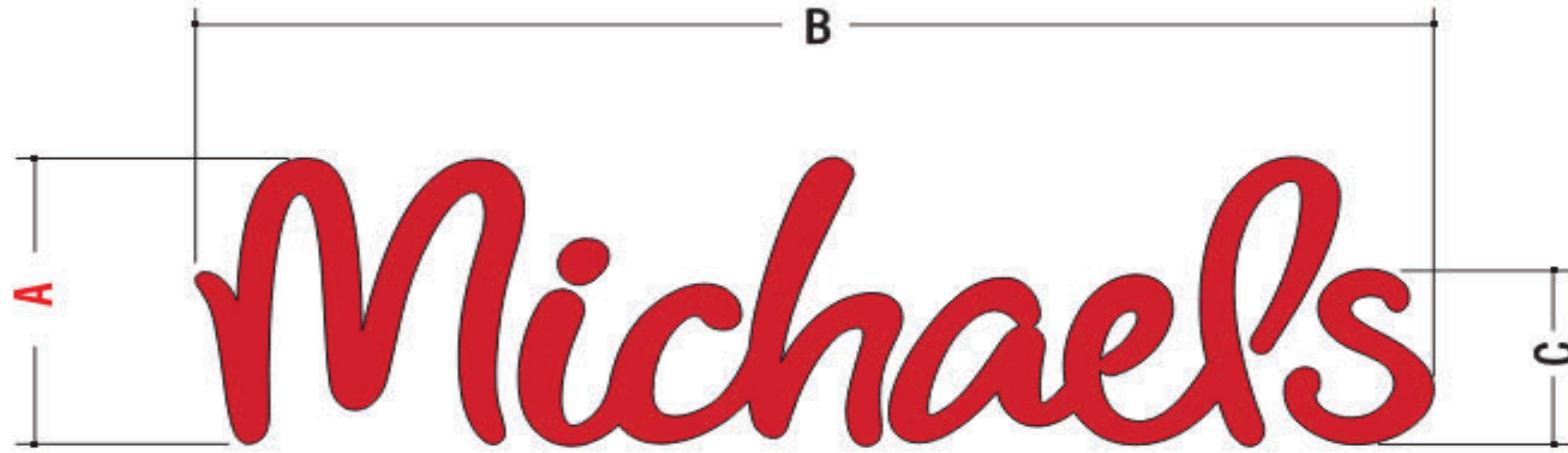
PK2400168

Landlord Signature: _____ Printed Name: _____ Company: _____ Date: _____

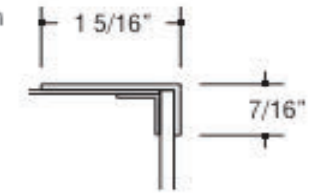
Michaels

SITE IDENTIFICATION

Illuminated Letters/Red Faces - Remote



Electrical Notes: All electrical components to be UL approved Customer is responsible for one (1) 120v/20a dedicated circuit with ground per sign within 6' of sign Lock out switch installed at panel box for all electrical signs Install in accordance with N.E.C. article 600 and/or local codes. This includes proper grounding and bonding of signs



METAL RETAINER

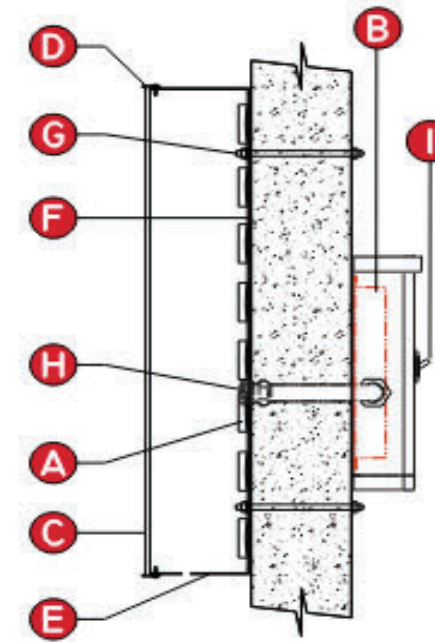
N. T. S.

LETTER SET LAYOUT

N. T. S.

VARIOUS SIZES						
TYPE	A	B	C	Ret. Type	Mtg.	Square Footage
hSM84CL	7'-0"	26'-7 3/8"	4'-4 1/8"	Large Metal	5/16"	186.34

LED Illuminated Letters - Flush Mount



A	ILLUMINATION	LED / COLOR	SLOAN
		LED-MICHAELS	RED / PER MFG
B	POWER SUPPLY	TYPE	SLOAN
		TYPE	PER MANUFACTURING
C	FACE	MATERIAL	7328 POLYCARBONATE
		COLOR	WHITE
		VINYL	ARLON 2500E-33
D	RETAINER	COLOR	RED
		MATERIAL	SEE NOTES
E	RETURN	MATERIAL	.040 x 5.3" ALUMINUM
		COLOR	DK. BRONZE
		DEPTH	5"
F	BACK	GAUGE	3MM
G	MOUNTING	MATERIAL	ACM
		TYPE	MECHANICAL
H	ELECTRICAL	TYPE	SEE SIZING CHART FOR CORRECT SIZE
		TYPE	PASS THRU
I	SWITCH	TYPE	-
		LOCATION	DISCONNECT/TOGGLE BY ELECTRICIAN

*WEEP HOLE(S) PER MFG. STANDARDS
 *CAULK REQUIRED
 *UL LISTED PRODUCT - LABELS VISIBLE TO BE SEEN BY CITY INSPECTORS
 *ALL ELECTRICAL OUTS LOCATED FOR RACEWAY OR REMOTE APPLICATION

Note: UL labels must be visible at all times by UL standards and local city requirements.



ACCOUNT: Michaels Store #9952
 LOCATION: 8851 Veterans Memorial Blvd. - Metairie, LA
 ACCT. REP: HOUSE DESIGNER: MAK
 DATE: 4/2/24
 COMPANION FILES: _____

REVISIONS:
 A -
 B -
 C -
 D -
 E -
 F -
 G -
 H -

INITIALS & DATE:

This is an original unpublished drawing submitted for use in connection with a project being planned for you by PSCO Kieffer. It is not to be reproduced, copied or exhibited in any fashion without the written permission of PSCO Kieffer.

Phone: 920.458.4394
 pscosigngroup.com

PK2400168A

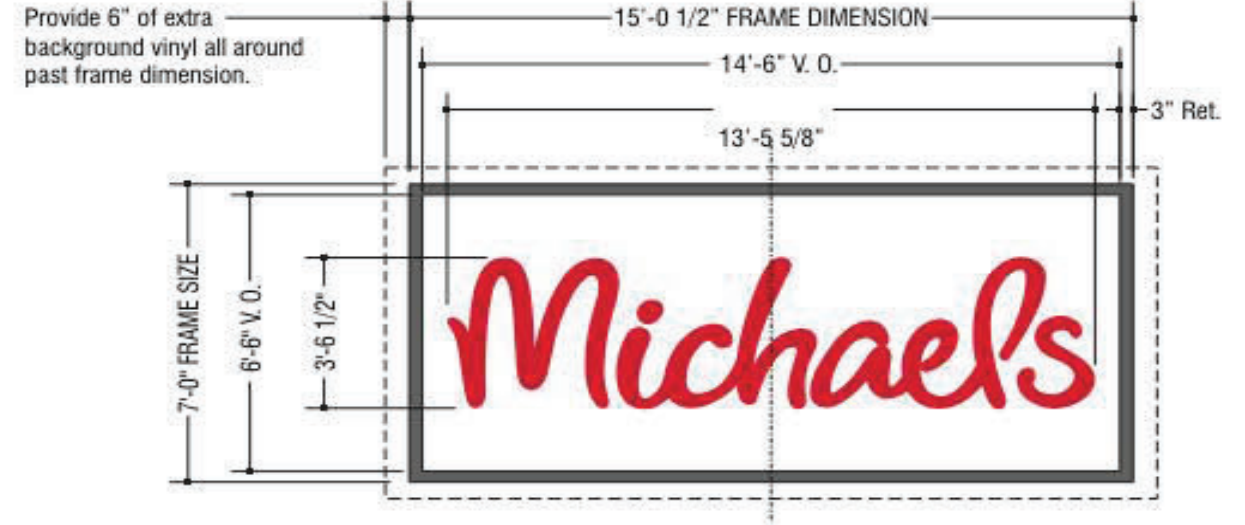
Landlord Signature: _____ Printed Name: _____ Company: _____ Date: _____



Face Replacement Only

SITE IDENTIFICATION
Replacement Faces

"For purposes of signage only. No elevation approval contained herein."



D/F PYLON SIGN



FRAME VIEW

FACE LAYOUT

(2) Faces Required

Scale: 1/4" = 1'-0"

FACE SPECIFICATIONS:

Remove existing flexible vinyl faces. Install New flexible vinyl faces w/ flat cut Arlon logotype graphics applied to 1st surface - SEE Color Schedule.

Install Note:

Provide 6" of extra background vinyl past frame all around for a field install. Trim face as required.

COLOR SCHEDULE:

-  White Background
-  Arlon 2500E-33 Red (186 Pantone Red)



ACCOUNT: Michael's Store #9952
 LOCATION: 8851 Veterans Memorial Blvd. - Metairie, LA
 ACCT. REP: HOUSE DESIGNER: MAK
 DATE: 4/2/24
 COMPANION FILES

REVISIONS:

REVISIONS	INITIALS & DATE
A	-
B	-
C	-
D	-
E	-
F	-
G	-
H	-

This is an original unpublished drawing submitted for use in connection with a project being planned for you by PSCO Kieffer. It is not to be reproduced, copied or exhibited in any fashion without the written permission of PSCO Kieffer.

Phone: 920.458.4394
pscosigngroup.com

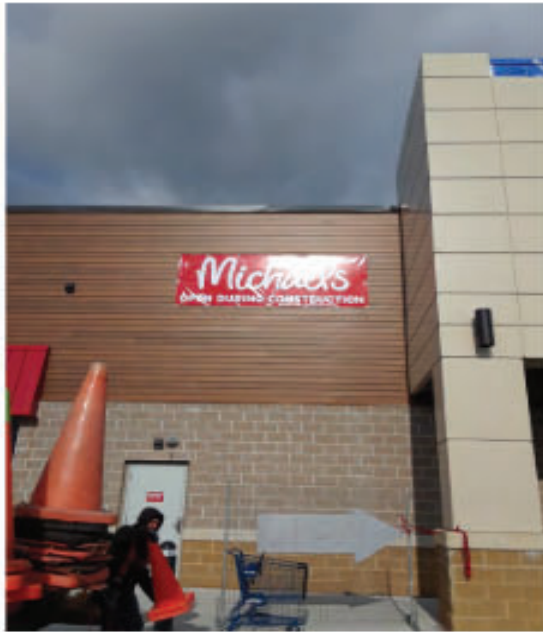
PK2400168B

Landlord Signature: _____ Printed Name: _____ Company: _____ Date: _____

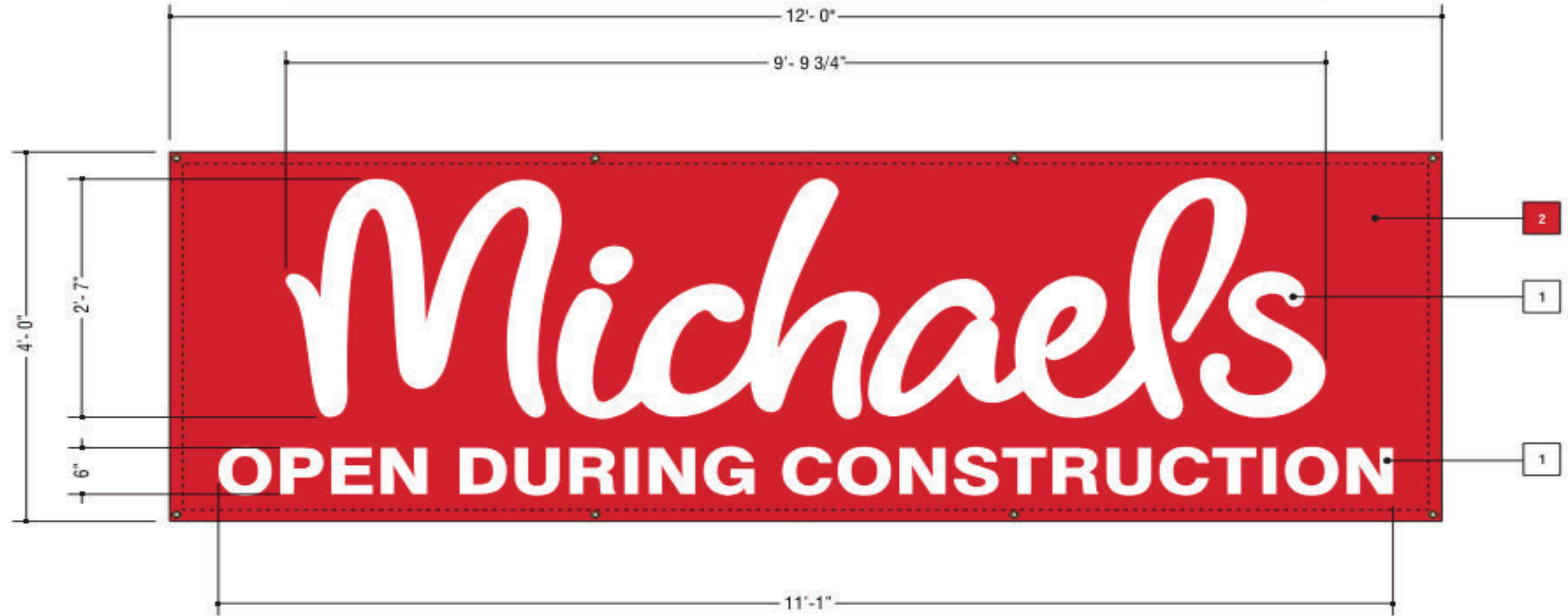
Michael's

SITE IDENTIFICATION
Temporary Banner

"For purposes of signage only. No elevation approval contained herein."



SITE PHOTO
TYPICAL APPLICATION)



**M4X12-REMODEL
TEMPORARY SINGLE-FACED BANNER LAYOUT**

48 SQ.FT.

Scale: 3/4" = 1'-0"

Material: 19 ounce very heavy duty vinyl
Background: Red
Letter Colors: White
Finish: Sewn, Hemmed with webbing strapping the hem. Reinforced corners with extra layer of material sewn in each corner and wind slits throughout. Brass grommets in corners and in the middle for a total of 8 attachment points.

MATERIAL FINISH COLORS

Digital Printed to Match

1 White 2 Arlon 2500-33 Red



ACCOUNT: Michael's Store #9952
 LOCATION: 8851 Veterans Memorial Blvd., Metairie, LA
 ACCT. REP: HOUSE DESIGNER: MAK
 DATE: 4/2/24
 COMPANION FILES



REVISIONS:	INITIALS & DATE:
A	-
B	-
C	-
D	-
E	-
F	-
G	-
H	-

This is an original unpublished drawing submitted for use in connection with a project being planned for you by PSCO Kieffer. It is not to be reproduced, copied or exhibited in any fashion without the written permission of PSCO Kieffer.

Phone: 920.458.4394
pscosigngroup.com

PK2400168C

Landlord Signature: _____ Printed Name: _____ Company: _____ Date: _____