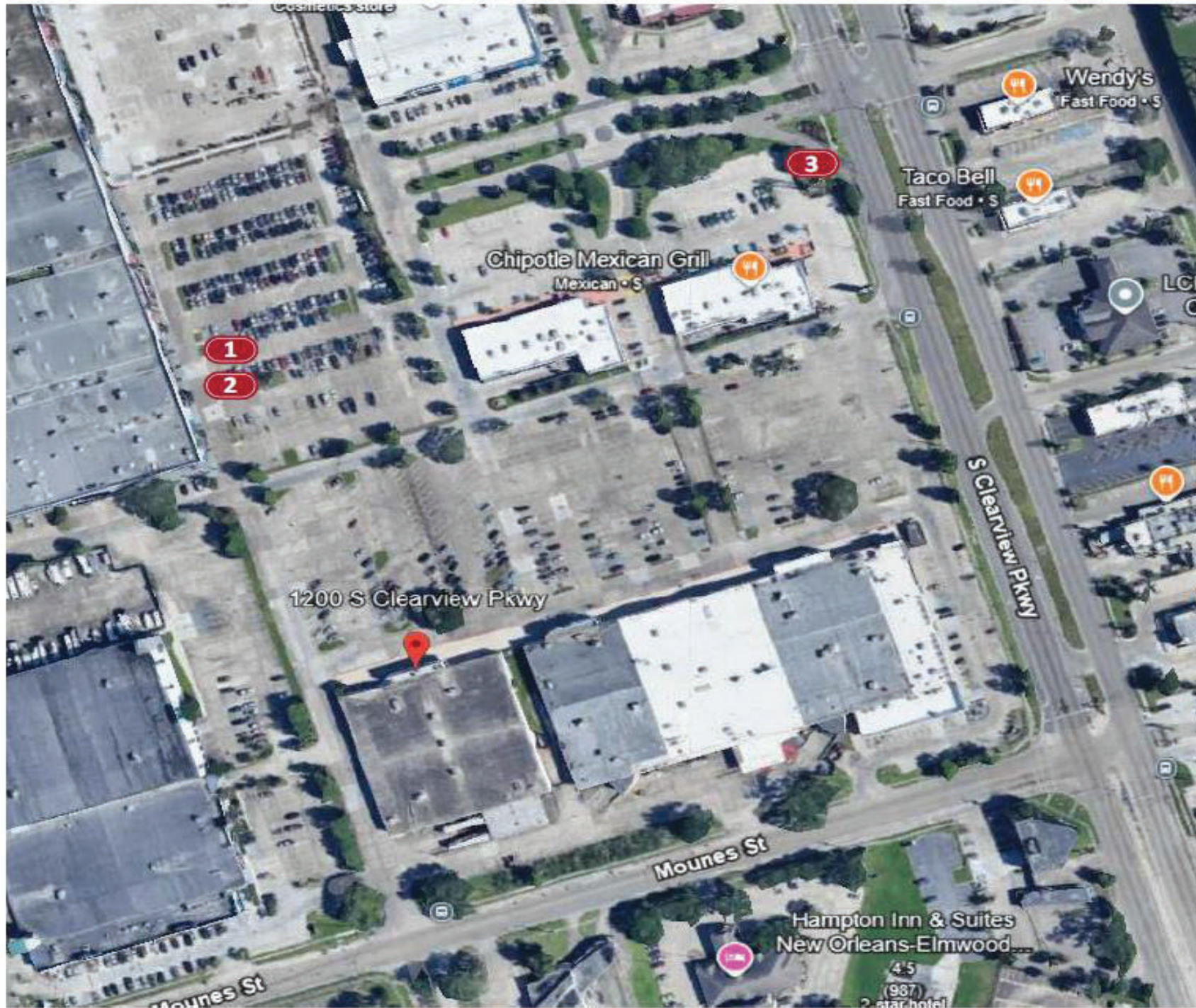




#1079
1200 S. Clearview Parkway
New Orleans, Louisiana 70123





SITE PLAN

1	EXTERIOR ELEVATION SIGNAGE
2	UNDER CANOPY SIGN
3	TENANT PANELS



SITE PLAN : OVERVIEW

ADART
 700 Parker Sq STE 205
 Flower Mound, TX 75028
 T. 800.675.6353

Project: Rack Room Shoes #1079
Location: 1200 S. Clearview Parkway
 New Orleans, Louisiana 70123
Date: 9/24/23 **Sales:** DH **Designer:** MH
File Name: RRS New Orleans, LA

Revision
 R1: MH: 9/26/24: REMOVED OPTION 1, UPDATED PANELS.
 R2: MH: 9/30/24: REVISED EXHIBIT.
 R3:
 R4:
 R5:

Approvals
Customer:
Landlord:

CONCEPTUAL DRAWINGS ONLY:
 Dimensions are approximate & may change due to construction factors or exact field conditions. Colors shown are as close as printing will allow. Always follow written specifications.
ALL RIGHTS RESERVED:
 This design has been created for you in connection with a project being planned for you by AD ART. It may not be shown to anyone outside your organization, and may not be reproduced in any manner without prior consent.

SHEET
2

CODE
 The allowable sign area shall be computed at 1 s'LF of bldg width or individual tenant space width along the wall on which the business has its main entrance.
 In no case shall the area for any flat or projecting sign be > 100sf.
 79.25 X 1 = 79.25' ALLOWED



EXISTING SIGNAGE



PROPOSED SIGNAGE

79'3" storefront width



STOREFRONT ELEVATION

ADART
 700 Parker Sq STE 205
 Flower Mound, TX 75028
 T. 800.675.6353

Project: Rack Room Shoes #1079
Location: 1200 S. Clearview Parkway
 New Orleans, Louisiana 70123
Date: 9/24/23 **Sales:** DH **Designer:** MH
File Name: RRS New Orleans, LA

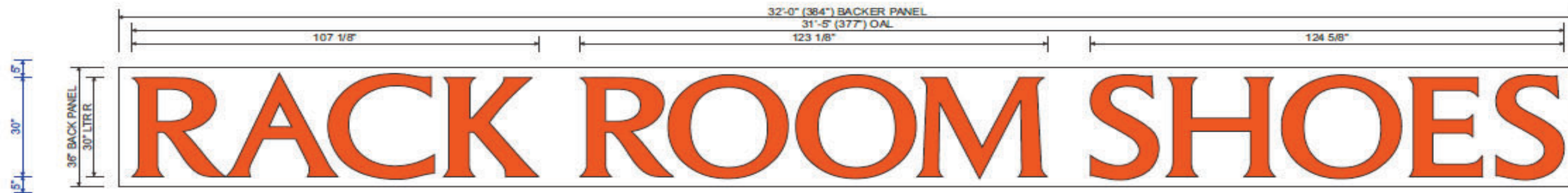
Revision
 R1: MH:9/26/24: REMOVED OPTION 1, UPDATED PANELS.
 R2: MH:9/30/24: REVISED EXHIBIT.
 R3:
 R4:
 R5:

Approvals
Customer:
Landlord:

CONCEPTUAL DRAWINGS ONLY:
 Dimensions are approximate & may change due to construction factors or exact field conditions. Colors shown are as close as printing will allow. Always follow written specifications.
ALL RIGHTS RESERVED:
 This design has been created for you in connection with a project being planned for you by AD ART. It may not be shown to anyone outside your organization, and may not be reproduced in any manner without prior consent.

SHEET
3

CHANNEL LETTERS TO BE INSTALLED ALONG EXISTING 5" FASCIA C-CHANNEL STRUCTURES!



1 30" REMOTE CHANNEL LETTERS ON BACKER PANEL

SCALE: 3/8" = 1'-0"

(1) REQUIRED - MANUFACTURE & INSTALL

Channel Letters: 78.5 SF / Panel: 96.0 SF

SPECIFICATIONS:

CHANNEL LETTERS:

1. 5" DEEP ALUMINUM RETURNS & FLAT ALUMINUM BACKS PRE-FINISHED BLACK.
2. LETTER INTERIORS FINISHED LIGHT ENHANCEMENT WHITE.
3. 1" BLACK TRIM CAP
4. FACES ARE FLAT 3/16" TH. WHITE POLYCARBONATE WITH FIRST SURFACE 3M 3630-44 ORANGE VINYL OVERLAYS.
5. INTERNALLY ILLUMINATED WITH WHITE PRINCIPLE LEDS.

6. LETTERS MOUNTED FLUSH TO 2" DEEP ALUMINUM PAN PANEL PAINTED WHITE.
7. ALL MOUNTED FLUSH TO FASCIA WITH APPROPRIATE NON-CORROSIVE MOUNTING HARDWARE.

EXISTING BUILDING FASCIA C-CHANNEL SUPPORT SECTION (DETAILS TBD)

Primary Electrical Circuit

5" Deep Aluminum Returns Pre-Finished Black

1" Black Trim Cap w/ Pan Head Screws To Match Letter Returns

Face To Be 3/16" Th. Translucent White Polycarbonate w/ First Surface 3M 3630-44 Orange Vinyl Overlays

Illumination: Principle White LED Modules

Emergency Disconnect Switch In Primary Electrical Circuit

12 Volt UL Listed LED Power Supply

Galvanized Vented Transformer Housing

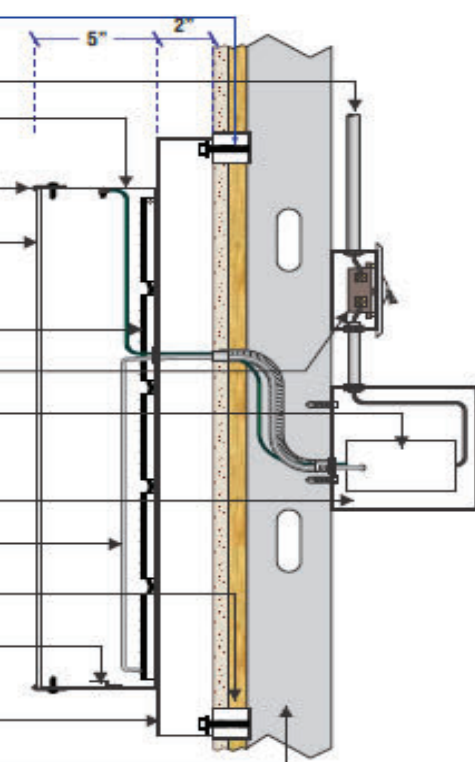
Secondary Power Supply

Heavy-Duty Expansion Anchors (minimum 3 per letter)

1/4" Weep Holes w/ Light Tight Baffle

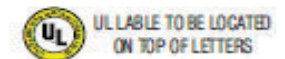
2" Deep Aluminum Pan Panel

Building Framing / Finished Building Surface



DETAIL SECTION

ALL PRIMARY ELECTRICAL CONNECTIONS SHALL BE RUN OUT OF BACK OF SIGN OR RACEWAY THRU APPROPRIATE FITTINGS



N.T.S.



COLOR SCHEDULE	
	COLOR: PMS 1655 C ORANGE VINYL: 3M 3630-44 ORANGE
	COLOR: PMS 281 C BLUE VINYL: 3M 3630-36 BLUE
	COLOR: PANTONE BLACK VINYL: 3M 3630-22 BLACK

ADART
700 Parker Sq STE 205
Flower Mound, TX 75028
T. 800.675.6353

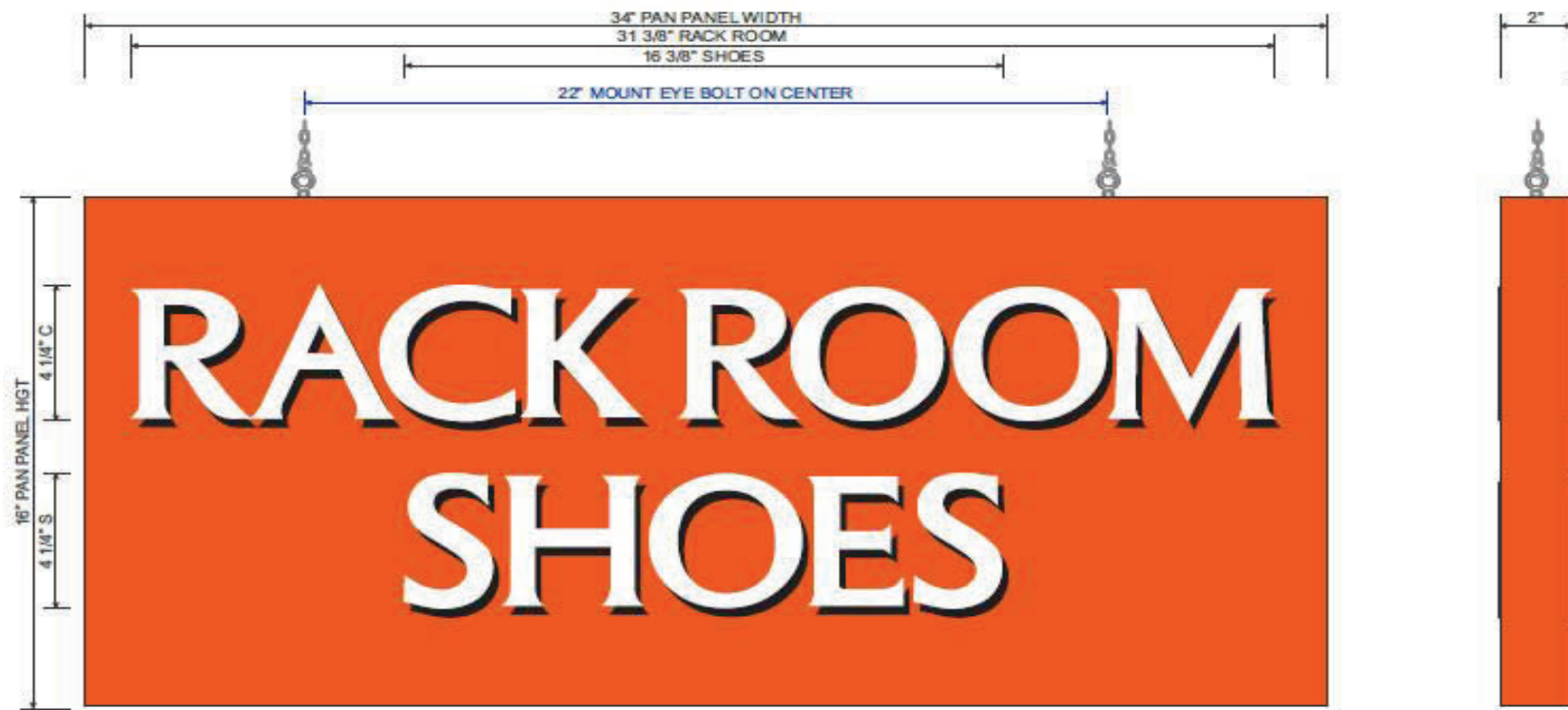
Project: Rack Room Shoes #1079
Location: 1200 S. Clearview Parkway
New Orleans, Louisiana 70123
Date: 9/24/23 **Sales:** DH **Designer:** MH
File Name: RRS New Orleans, LA

Revision
R1: MH-9/26/24: REMOVED OPTION 1, UPDATED PANELS.
R2: MH-9/30/24: REVISED EXHIBIT.
R3:
R4:
R5:

Approvals
Customer:
Landlord:

CONCEPTUAL DRAWINGS ONLY:
Dimensions are approximate & may change due to construction factors or exact field conditions. Colors shown are as close as printing will allow. Always follow written specifications.
ALL RIGHTS RESERVED:
This design has been created for you in connection with a project being planned for you by AD ART. It may not be shown to anyone outside your organization, and may not be reproduced in any manner without prior consent.

SHEET
4



2 BLADE SIGN - NON ILLUMINATED

(1) REQUIRED - FABRICATE AND INSTALL -

SCALE: 1:5
3.77 SQ. FT.

SPECIFICATIONS

1. 2" DEEP ALUMINUM PAN PANEL FACES & RETURNS PAINTED PMS 1655 C ORANGE.
2. 1/4" TH. WHITE SINTRA LETTERS MOUNTED FLUSH TO PANEL WITH VHB TAPE.
3. FIRST SURFACE 3M 3630-22 BLACK VINYL DROP SHADOW DETAILS.
4. HUNG/SUSPENDED FROM CANOPY WITH CHAIN & APPROPRIATE HARDWARE.



DAMMON
ENGINEERS ARCHITECTS



COLOR SCHEDULE	
	COLOR: PMS 1655 C ORANGE VINYL: 3M 3630-44 ORANGE
	COLOR: PMS 281 C BLUE VINYL: 3M 3630-36 BLUE
	COLOR: PANTONE BLACK VINYL: 3M 3630-22 BLACK

ADART
700 Parker Sq STE 205
Flower Mound, TX 75028
T. 800.675.6353

Project: Rack Room Shoes #1079
Location: 1200 S. Clearview Parkway New Orleans, Louisiana 70123
Date: 9/24/23 Sales: DH Designer: MH
File Name: RRS New Orleans, LA

Revision
R1: MH/9/26/24: REMOVED OPTION 1, UPDATED PANELS.
R2: MH/9/30/24: REVISED EXHIBIT.
R3:
R4:
R5:

Approvals
Customer:
Landlord:

CONCEPTUAL DRAWINGS ONLY:
Dimensions are approximate & may change due to construction factors or exact field conditions. Colors shown are as close as printing will allow. Always follow written specifications.

ALL RIGHTS RESERVED:
This design has been created for you in connection with a project being planned for you by AD ART. It may not be shown to anyone outside your organization, and may not be reproduced in any manner without prior consent.



3 REPLACEMENT TENANT PANELS

(2) REQUIRED - MANUFACTURE & INSTALL

SCALE: 3/4" = 1'-0"

SPECIFICATIONS

1. 3/16" TH. FLAT WHITE LEXAN WITH (2) TWO LAYERS OF FIRST SURFACE VINYL OVERLAYS:
 - A. FIRST LAYER: ORACAL 8500-072 LIGHT GRAY TRANSLUCENT VINYL BACKGROUND.
 - B. SECOND LAYER: 3630-44 ORANGE VINYL WITH 3630-22 BLACK VINYL DROP SHADOW & 3M 3630-36 BLUE VINYL UNDERLINE.
2. VINYL APPLIED WITH 1/8" OVERLAP TO ELIMINATE LIGHT LEAKS.

COLOR SCHEDULE	
	COLOR: PMS 1655 C ORANGE VINYL: 3M 3630-44 ORANGE
	COLOR: PMS 281 C BLUE VINYL: 3M 3630-36 BLUE
	COLOR: PANTONE BLACK VINYL: 3M 3630-22 BLACK



ADART
 700 Parker Sq STE 205
 Flower Mound, TX 75028
 T. 800.675.6353

Project: Rack Room Shoes #1079
Location: 1200 S. Clearview Parkway
 New Orleans, Louisiana 70123
Date: 9/24/23 **Sales:** DH **Designer:** MH
File Name: RRS New Orleans, LA

Revision
 R1: MH:9/26/24: REMOVED OPTION 1, UP DATED PANELS.
 R2: MH:9/30/24: REVISED EXHIBIT.
 R3:
 R4:
 R5:

Approvals
Customer: _____
Landlord: _____

CONCEPTUAL DRAWINGS ONLY:
 Dimensions are approximate & may change due to construction factors or exact field conditions. Colors shown are as close as printing will allow. Always follow written specifications.
ALL RIGHTS RESERVED:
 This design has been created for you in connection with a project being planned for you by AD ART. It may not be shown to anyone outside your organization, and may not be reproduced in any manner without prior consent.