

**A** PROPOSED S/F EXTERIOR WALL SIGN ELEVATION

SCALE: 3/32"=1'-0"



<b>Design #</b>	
0404580Ar1	
<b>Sheet</b> 1 of 3	
<b>Client</b>	
WOODFOREST	
<b>Address</b>	
1501 MANHATTAN BLVD. HARVEY, LA	
<b>Account Rep.</b>	M. DRURY   SD
<b>Designer</b>	JP
<b>Date</b>	9/25/19
<b>Approval / Date</b>	
<b>Client</b>	
<b>Sales</b>	
<b>Estimating</b>	
<b>Art</b>	
<b>Engineering</b>	
<b>Landlord</b>	
<b>Revision / Date</b>	
R1 KMC 10/14/19: add city requirements	



**A** PROPOSED S/F EXTERIOR WALL SIGN



<b>chandlersigns.com</b>	
<b>National Headquarters:</b>	24205 Sovereign Road Fort Myers, FL 33905
<b>San Antonio:</b>	17720 San Pedro Avenue Suite 200 San Antonio, TX 78233
<b>West Coast:</b>	3220 Executive Ridge Drive Suite 100 Yuba, CA 95967
<b>Northeast US:</b>	2025 River Road Suite 201 Louisville, KY 40206
<b>Florida:</b>	2784 North 183rd Street Davie, FL 33317
<b>Georgia:</b>	111 Woodstone Place Lawrenceville, GA 30046
<b>South Texas:</b>	PO BOX 110106 Austin, TX 78711

This drawing is the property of Chandler Signs, LLC. All rights to its use for reproduction are reserved by Chandler Signs, LLC.



# DAMMON

## ENGINEERING, INC.

LOUISIANA & MISSISSIPPI

Sidell, Louisiana  
PH: 985-649-5832 Fax: 985-641-5950  
www.dammonengineering.com  
info@dammonengineering.com

This sign is designed to withstand 130 MPH wind load  
This sign will contain a UL label  
This sign is to be installed using 3/8" thru-bolts or appropriately sized fasteners as necessary.



END VIEW

**A S/F EXTERIOR WALL SIGN**

ONE (1) REQUIRED - MANUFACTURE & INSTALL

SCALE: 1"=1'-0"

20 SQ FT

6" DEEP ALUMINUM S/F SIGN CABINET & ALUMINUM RETAINERS PAINTED BLACK

#7328 WHITE POLYCARBONATE FACE w/ 1st SURFACE 3M 7725-22 OPAQUE MATTE BLACK VINYL OVERLAY & WEED-OUT/SHOW-THRU WHITE GRAPHICS / GREEN VINYL STRIPE OVERLAY TO MATCH BRILLIANT GREEN 3630-106

INTERNALLY ILLUMINATED w/ WHITE LED MODULES - PHOTOCELL CONTROL

MOUNT FLUSH TO FASCIA w/ NON-CORROSIVE HARDWARE AS REQ'D PER SITE CONDITIONS

<b>Design #</b>	0404580Ar1
<b>Sheet</b>	2 of 3
<b>Client</b>	WOODFOREST
<b>Address</b>	1501 MANHATTAN BLVD. HARVEY, LA
<b>Account Rep.</b>	M. DRURY   SD
<b>Designer</b>	JP
<b>Date</b>	9/25/19
<b>Approval / Date</b>	
<b>Client</b>	
<b>Sales</b>	
<b>Estimating</b>	
<b>Art</b>	
<b>Engineering</b>	
<b>Landlord</b>	
<b>Revision/Date</b>	

R1 KMc 10/14/19: add city requirements



**chandler signs.com**

<b>National Headquarters</b>	24205 Sovereign Road Fort Worth, TX 76155 (817) 702-2000 Fax (817) 702-2004
<b>San Antonio</b>	17309 San Pedro Avenue Suite 200 San Antonio, TX 78232 (214) 349-8888 Fax (214) 349-8794
<b>West Coast</b>	12200 Sandstone Ridge Drive Suite 250 Truckee, CA 96161 (530) 734-4376 Fax (530) 734-8732
<b>Northeast US</b>	2300 Shaw Road Suite 201 Louisville, KY 40204 (502) 887-8800 Fax (502) 887-8878
<b>Florida</b>	2184 Sany 181 Royal Circle Orlando, FL 32817 (407) 841-1100 Fax (407) 841-1100
<b>Georgia</b>	311 Woodstone Place Dawsonville, GA 30734 (770) 735-8800 Fax (770) 735-8734
<b>South Texas</b>	PO BOX 522, 106 Central Drive AUSTIN, TX 78732 (512) 865-9300 Fax (512) 865-4339

This drawing is the property of Chandler Signs, LLC. All rights to its use for reproduction are reserved by Chandler Signs, LLC.

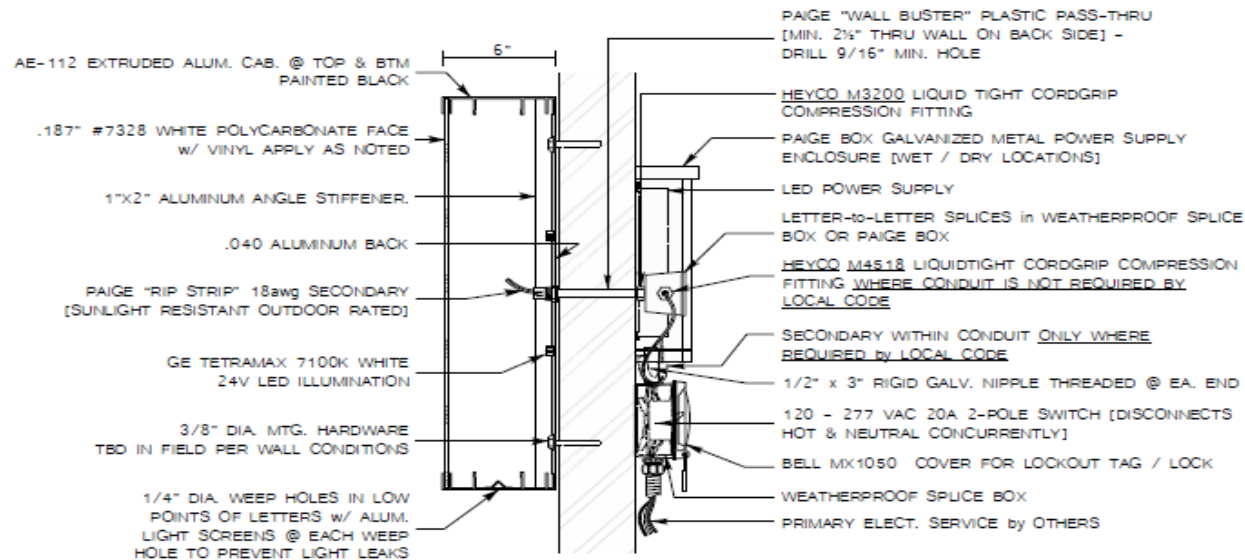
**FINAL ELECTRICAL CONNECTION BY CUSTOMER**

THE OWNER IS TO BE RESPONSIBLE FOR THE PROPER ELECTRICAL CONNECTION OF THE SIGN TO THE APPLICABLE LOCAL CODES. THE INSTALLER WILL PROVIDE A LIST OF THE LOCAL ELECTRICAL CODES AND THE LOCAL ELECTRICAL CONTRACTORS.



This sign is designed to withstand 130 MPH wind load  
This sign will contain a UL label  
This sign is to be installed using 3/8" thru-bolts or appropriately sized fasteners as necessary.

<b>Design #</b>	
0404580Ar1	
<b>Sheet</b> 3 of 3	
<b>Client</b>	
WOODFOREST	
<b>Address</b>	
1501 MANHATTAN BLVD. HARVEY, LA	
<b>Account Rep.</b>	M. DRURY   SD
<b>Designer</b>	JP
<b>Date</b>	9/25/19
<b>Approval / Date</b>	
<b>Client</b>	
<b>Sales</b>	
<b>Estimating</b>	
<b>Art</b>	
<b>Engineering</b>	
<b>Landlord</b>	
<b>Revision / Date</b>	
R1 KMc 10/14/19: add city requirements	



**FACE-LIT WALL SIGN SECTION** SCALE 1 1/2" = 1'-0"  
REMOTE POWER SUPPLIES



**chandlersigns.com**

<b>National Headquarters</b>	14200 Greenway Blvd Fort Worth, TX 76155 817-412-0000 Fax: 817-412-0001
<b>San Antonio</b>	17310 San Pedro Avenue Suite 200 San Antonio, TX 78232 281-888-8888 Fax: 281-888-0704
<b>West Coast</b>	32205 Lakewood Ridge Drive Suite 200 West, CA 92686 949-244-8888 Fax: 949-244-8882
<b>Northeast US</b>	25011 Row Road Suite 200 Loudsville, KY 40205 502-581-8888 Fax: 502-581-8889
<b>Florida</b>	2504 Spruce Hill Point Circle Davenport, FL 33837 888-888-8888 Fax: 888-888-1188
<b>Georgia</b>	711 Woodchuck Place Doraville, GA 30534 770-335-8882 Fax: 770-335-8724
<b>South Texas</b>	PO BOX 572 ICE Oval Drive Waco, TX 76792 261-365-8888 Fax: 261-365-8777

This drawing is the property of Chandler Signs, LLC. All rights to its use for reproduction are reserved by Chandler Signs, LLC.

**FINAL ELECTRICAL CONNECTION BY CUSTOMER**

THIS SIGN SYSTEM TO BE INSTALLED IN ACCORDANCE WITH ALL CODES OF THE NATIONAL ELECTRICAL AND MECHANICAL APPLICABLE LOCAL CODES. THE SIGNAGES SHALL BE INSTALLED IN ACCORDANCE WITH ALL APPLICABLE LOCAL AND NATIONAL ELECTRICAL LABELS.

**DAMMON**  
ENGINEERING, INC.

LOUISIANA & MISSISSIPPI

Sidell, Louisiana  
Ph: 985-649-5832 Fax: 985-641-5950  
www.dammonengineering.com  
info@dammonengineering.com

This sign is designed to withstand 130 MPH wind load  
This sign will contain a UL label  
This sign is to be installed using 3/8" thru-bolts or appropriately sized fasteners as necessary.