

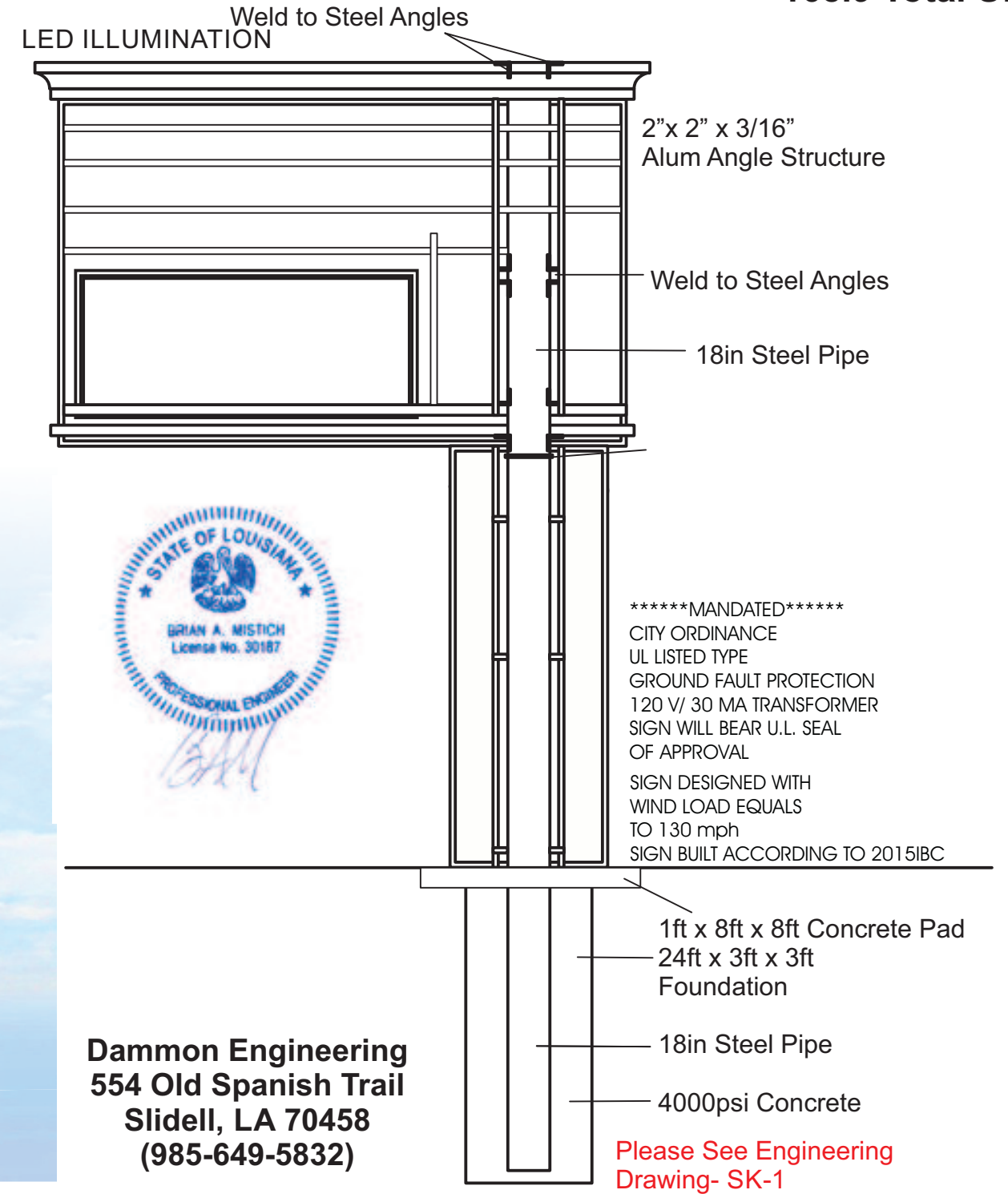
43" x 185"
55.2sqft

70" x 203"
98.7sqft

10sqft

LANDSCAPE
AT BASE OF SIGN
PROVIDED BY OTHERS

168.9 Total SF



*****MANDATED*****
CITY ORDINANCE
UL LISTED TYPE
GROUND FAULT PROTECTION
120 V/ 30 MA TRANSFORMER
SIGN WILL BEAR U.L. SEAL
OF APPROVAL
SIGN DESIGNED WITH
WIND LOAD EQUALS
TO 130 mph
SIGN BUILT ACCORDING TO 2015IBC

1ft x 8ft x 8ft Concrete Pad
24ft x 3ft x 3ft
Foundation
18in Steel Pipe
4000psi Concrete

Please See Engineering
Drawing- SK-1

Dammon Engineering
554 Old Spanish Trail
Slidell, LA 70458
(985-649-5832)

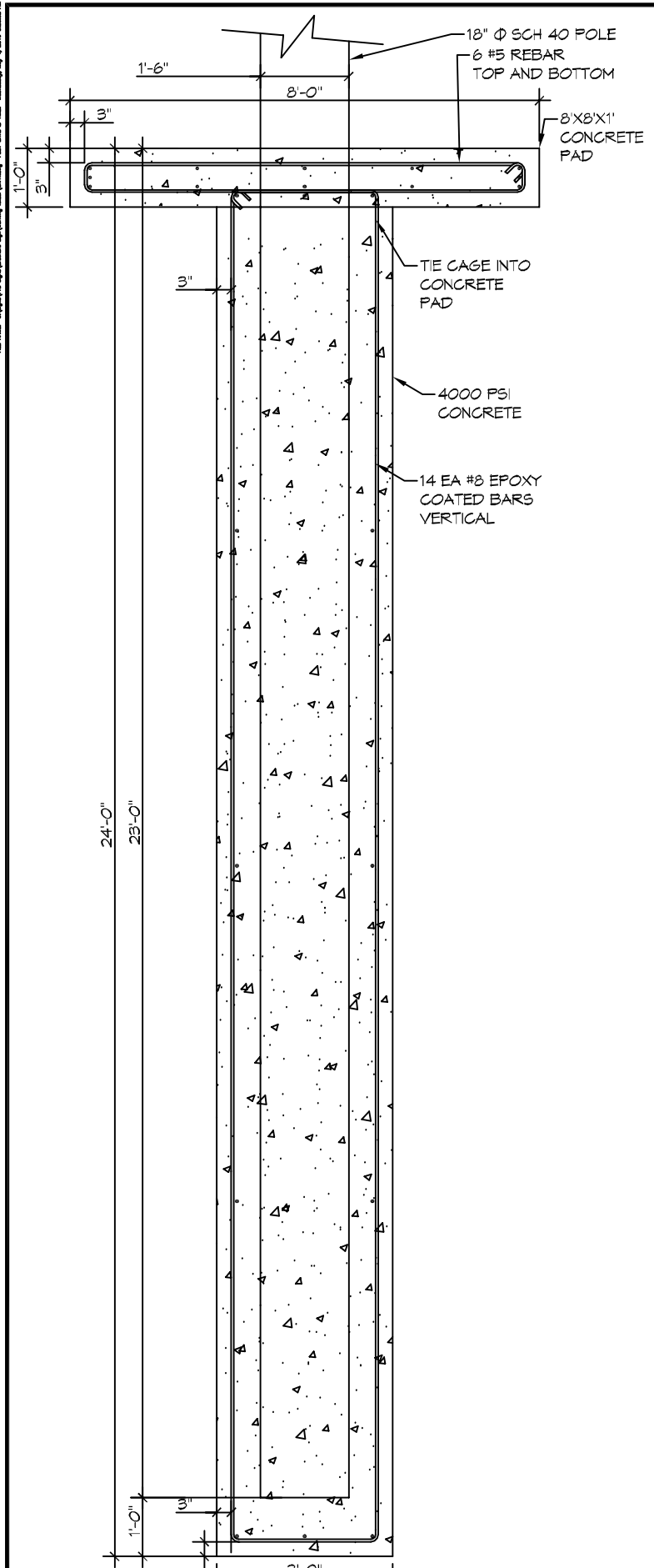


1310 Carroll St.
Kenner, La. 70062
Office: 504.467.5205
Fax: 504.467.5206
www.PROSIGNSOLA.com

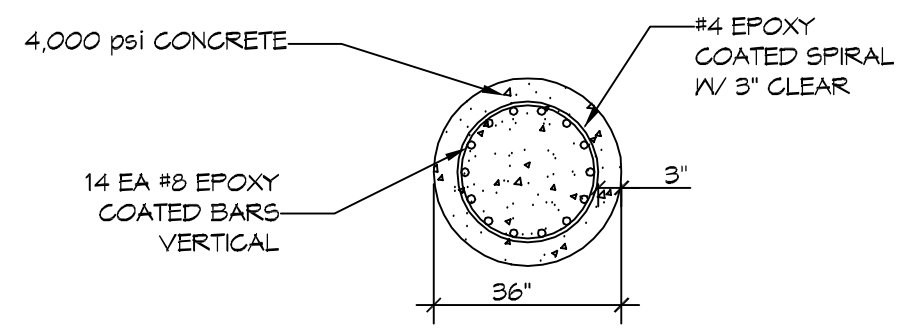
Job Name: Brother's Food Mart Designer: Lily Pham Sketch #: 18-0809-P6
 Location: 799 Behrman Hwy Salesman: Chris Nguyen Scale: 1/4" = 1'-0"
Terry Town, LA 70056 Contact Person: _____ Contact Number: _____

THESE PLANS AND SPECIFICATIONS HAVE BEEN PREPARED BY ME OR UNDER MY SUPERVISION. TO THE BEST OF MY KNOWLEDGE AND BELIEF THEY CONFORM TO ALL CITY REQUIREMENTS. I AM NOT GENERALLY ADMINISTERING THE WORK. ALL ELECTRIC SIGNS UL LISTED/ WINDLOAD OF 130 MPH THIS DRAWING IS THE PROPERTY OF PRO SIGNS & GRAPHICS AND CANNOT BE DUPLICATED WITHOUT PERMISSION.

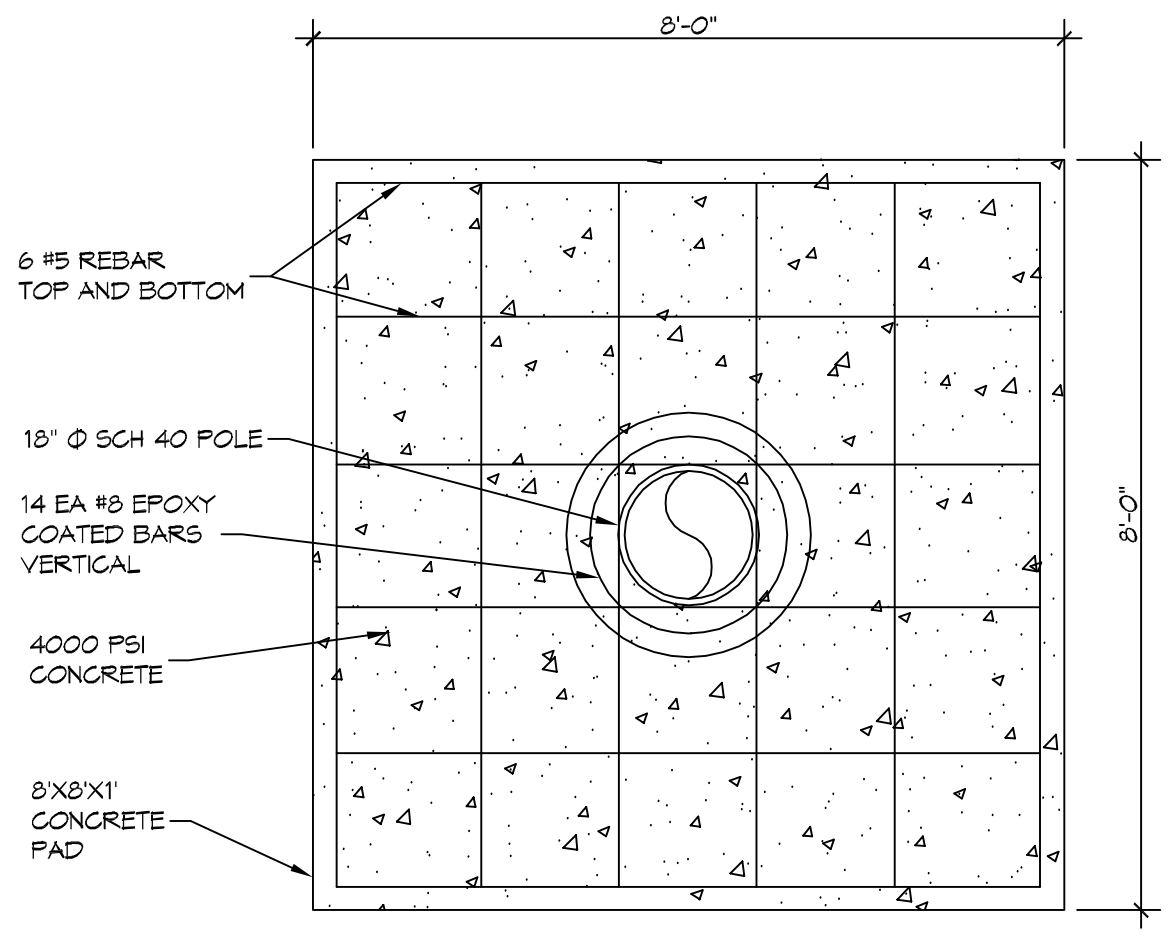
THE ABOVE INFORMATION IS THE PROPERTY OF DAMMON ENGINEERING, INC. ANY REPRODUCTION OR DISSEMINATION OF THIS INFORMATION WITHOUT THE WRITTEN PERMISSION OF DAMMON ENGINEERING, INC. IS STRICTLY PROHIBITED.



1 POLE PLAN
SCALE: 3/8" = 1'-0"



2 CAGE
SCALE: N.T.S. SECTION



3 FOUNDATION PLAN
SCALE: 1/2" = 1'-0" PLAN

DRILLED PIER NOTES

1. ALL CONVENTIONAL REINFORCING STEEL SHALL MEET ASTM-A615 (GRADE 60)
2. DO NOT WELD ON THE SPIRAL REINFORCING STEEL. SECURELY CROSS-TIE THE VERTICAL AND SPIRAL REINFORCEMENT WITH DOUBLE WIRE. SUPPORT OR HOLD DOWN THE CAGE SO THAT THE VERTICAL DISPLACEMENT DURING CONCRETE PLACEMENT AND CASING EXTRACTION DOES NOT EXCEED 6 IN.
3. COMPLETELY ASSEMBLE A CAGE OF REINFORCING STEEL, CONSISTING OF LONGITUDINAL AND SPIRAL BARS THEN PLACE IT IN THE DRILLED PIER EXCAVATION AS A UNIT IMMEDIATELY AFTER THE PROPER CONDITION OF THE EXCAVATION HAS BEEN DEMONSTRATED. WHEN CONCRETE PLACEMENT DOES NOT FOLLOW IMMEDIATELY AFTER CAGE PLACEMENT, REMOVE THE STEEL FROM THE PIER EXCAVATION IF THE CAGE IS REMOVED, RECHECK PIER EXCAVATION CLEANLINESS IN ACCORDANCE WITH THIS PROVISION BEFORE REINSTALLING THE CAGE.

DAMMON ENGINEERING, INC.
 LOUISIANA & MISSISSIPPI
 Chief Engineer: Brian A. Misch, PE
 554 Old Spanish Trail
 Slidell, LA 70488
 www.dammonengineering.com
 info@dammonengineering.com
 PH: 985.649.9822

#	DESCRIPTION	DATE



FOUNDATION FOR SIGN
BROTHERS SIGN
 THE BROTHERS SIGN COMPANY, L.P.
 TERREBONNE, LA
 JOB NO: 2018 DATE: 09-01-2018
 DRAWN BY: CJD CHECKED BY: BAK

SHEET TITLE:
 SIGN FOUNDATION
 DRAWING NUMBER:
SK-1
 SHEET No: #1 of #1