

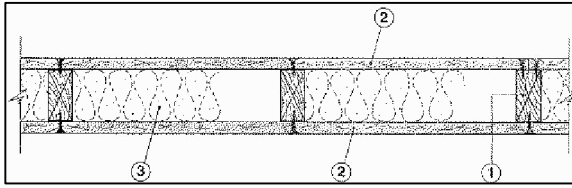
Fire Resistance Ratings - ANSI/UL 263

Design No. U333

December 17, 2004

Bearing Wall Rating - 1 HR.

Finish Rating - 23 min.



1. **Wood Studs** - Nom 2 by 4 in., spaced 16 in. OC effectively cross braced.

2. **Gypsum Board*** - 5/8 in. thick, 4 ft wide, applied either vertically or horizontally, screw attached to studs and plates with 1-1/4 in. long Type W steel screws, spaced 12 in. OC.

AMERICAN GYPSUM CO - Types AG-C.

BPB AMERICA INC - ProRoc Type C.

BPB CANADA INC - ProRoc Type C.

CANADIAN GYPSUM COMPANY - Types C, IP-X2, IPC-AR.

G-P GYPSUM CORP, SUB OF

GEORGIA-PACIFIC CORP - Type 5.

LAFARGE NORTH AMERICA INC - Types LGFC-C, LGFC-C/A.

NATIONAL GYPSUM CO - Types FSK-C, FSW-C, FSW-G.

PABCO BUILDING PRODUCTS L L C, DBA

PABCO GYPSUM - Type C or PG-C.

STANDARD GYPSUM L L C - Type SG-C.

TEMPLE-INLAND FOREST PRODUCTS CORP - Type TG-C.

UNITED STATES GYPSUM CO - Types C, IP-X2, IPC-AR.

USG MEXICO S A DE C V - Types C, IP-X2, IPC-AR.

3. **Batts and Blankets*** - (Optional) - Mineral wool insulation, partially or completely filling stud cavity.

THERMAFIBER INC - Type SAFB.

3A. **Fiber, Sprayed*** - As an alternate to Batts and Blankets (Item 3) -

Spray applied cellulose material. The fiber is applied with water to completely fill the enclosed cavity in accordance with the application instructions supplied with the product. Nominal dry density of 3.0 lb/ft³.

Alternate application method: The fiber is applied with U.S. Greenfiber LLC Type AD100 hot melt adhesive at a nominal ratio of one part adhesive to 6.6 parts fiber to completely fill the enclosed cavity in accordance with the application instructions supplied with the product.

Nominal dry density of 2.5 lb/ft³.

U S GREENFIBER L L C - Cocoon2 Stabilized or Cocoon-FRM (Fire Rated Material)

3B. **Fiber, Sprayed*** - As an alternate to Batts and Blankets (Item 3) and Item 3A - Spray applied cellulose insulation material. The fiber is applied with water to interior surfaces in accordance with the application instructions supplied with the product. Applied to completely fill the enclosed cavity. Minimum dry density of 4.3 pounds per cubic ft.

NU-WOOL CO INC - Cellulose Insulation

4. **Joints and Nailheads** - Wallboard joints covered with paper tape and joint compound. Screw heads covered with joint compound.

*Bearing the UL Classification Mark