



DAMMON

ENGINEERING, INC.

554 Old Spanish Trail
Slidell, LA 70458
Phone: 985-649-5832

dammonengineering.com
info@dammonengineering.com

August 20, 2025

Daniel Latournerie
Director of Operations
M.S. Rau Antiques
630 Royal St.
New Orleans, LA 70130

Ref: Warehouse Storage Calculations at 2223 Perdido St

Dear Mr. Latournerie

It was a pleasure to discuss with you the need for floor loading calculations at the subject property. Dammon Engineering, Inc. is pleased to propose our services to provide floor loading for all of your elevated storage areas inside the warehouse at 2223 Perdido St.

We will provide a package that includes a basic floor plan that shows the load bearing walls and columns, this is not a detailed square foot floor plan but one that shows where the load bearing walls and columns are located. This basic floor plan is needed to provide floor loading calculations.

We propose a total fee of \$4,340.00 (Four Thousand Three Hundred Forty Dollars). For this fee we will provide you with the available floor loading of all elevated storage areas inside 2223 Perdido St. In order to see the supports we will require some of the mezzanine flooring over the entrance/shop area be removed so that we can see the supports. See attached.

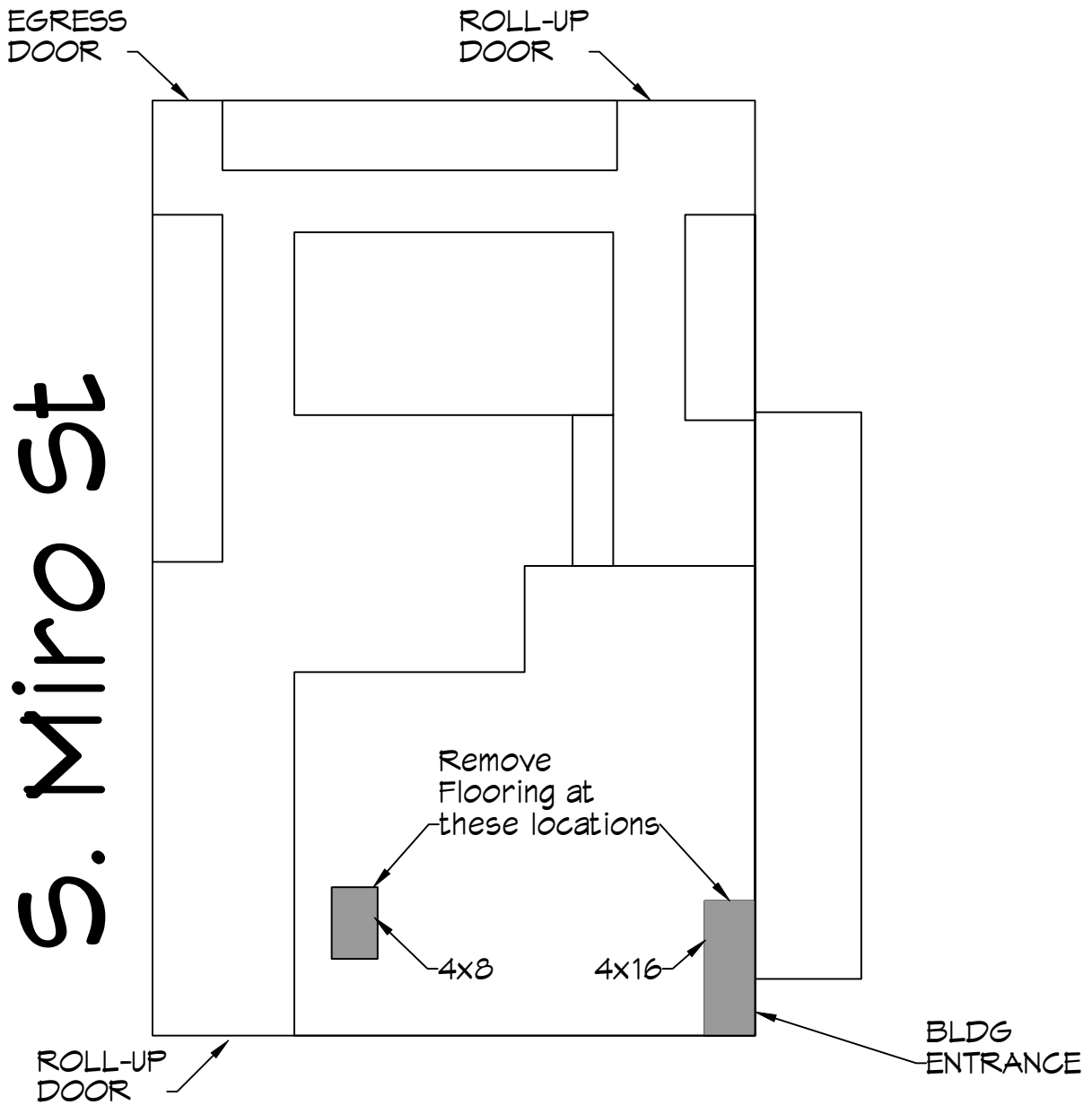
We look forward to working with you on this project. Please indicate your acceptance of the above by signing below. If you have any questions, or require any further information, please feel free to call.

Sincerely,

David Dammon, President

Accepted: _____
Mr. Latournerie

Date: _____



Perdido St

Elevated Storage Areas