

(PARTIALLY) ENCLOSED GABLE END BUILDING

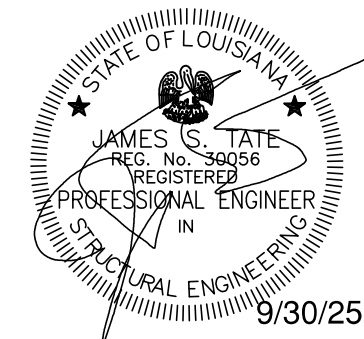
MAXIMUM >0' TO <30' WIDE x <16' MAXIMUM EAVE HEIGHT (BOX FRAME)  
(UP TO) 145 M.P.H. WIND ZONE - 35/43.5/47 P.S.F. SNOW LOAD(S)

FOR:

Roderick Ducre  
33076 Haines Drive  
Slidell LA 70460

ISSUE DATE: 09/29/2025

THESE PLANS HAVE BEEN PROPERLY EXAMINED BY  
THE UNDERSIGNED. I DETERMINED THAT THEY  
COMPLY WITH EXISTING LOCAL LOUISIANA CODES  
AND ARE APPROPRIATE FOR USE IN THIS AREA



## INDEX OF DRAWINGS

- S0 - COVERSHEET
- SOA - INDEX OF DRAWINGS
- SOB - APPENDIX 'B'
- S1 - TYPICAL END / SIDE ELEVATIONS
- S2 - TYPICAL RAFTER / COLUMN FRAME SECTIONS (<24' WIDE / <16' HIGH)
- S2A - TYPICAL RAFTER / COLUMN FRAME SECTIONS (>25' TO <30' WIDE / <16' HIGH)
- S3 - TYPICAL SIDE / END FRAMING SECTIONS
- S4 - BOX EAVE / SINGLE COLUMN OPTIONS (<24' / <16' HIGH)
- S4A - BOX EAVE / DOUBLE COLUMN OPTIONS (>25' TO <30' / <16' HIGH)
- S5 - SINGLE COLUMN FOUNDATION
- S5A - SINGLE COLUMN FOUNDATION - NO SIDING LEDGE
- S5B - SINGLE COLUMN FOUNDATION - CLIP ANGLE OPTION
- S5C - DOUBLE COLUMN FOUNDATION
- S5D - DOUBLE COLUMN FOUNDATION - NO SIDING LEDGE
- S6 - ALTERNATE ANCHORAGE OPTIONS
- S7 - TYPICAL END / SIDE WALL OPENING FRAMING SECTIONS
- S8 - BASE RAIL CONNECTION DETAILS
- S8A - CONNECTION DETAILS
- S8B - TRUSS CONNECTION DETAILS
- S9 - LEAN-TO FRAMING OPTIONS
- S9A - LEAN-TO HIP FRAMING OPTIONS
- S10 - LEAN-TO FRAMING OPTIONS
- S10B - LEAN-TO FRAMING OPTIONS
- S10C - LEAN-TO FRAMING OPTIONS
- S10D - LEAN-TO FRAMING OPTIONS
- S11 - VERTICAL ROOF / SIDING OPTIONS
- S11A - VERTICAL ROOF / SIDING OPTIONS
- S12 - HEADER OPTIONS

**JCMT**  
ASSOCIATES, PLLC  
PO BOX 27  
Pilot Mountain, NC 28641  
828-310-7160

Roderick Ducre  
33076 Haines Drive  
Slidell LA 70460

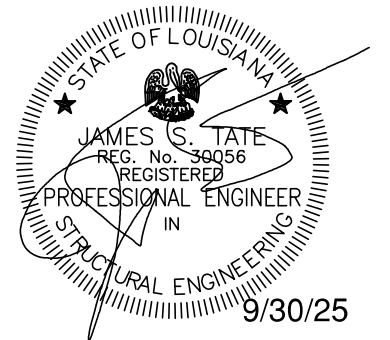
(PARTIALLY) ENCLOSED GABLE END BUILDING  
MAXIMUM >0' TO <30' WIDE x <16' MAXIMUM EAVE HEIGHT (BOX FRAME)  
(UP TO) 14.5 M.P.H. WIND ZONE - 35/43.5/47 P.S.F. SNOW LOAD(S)

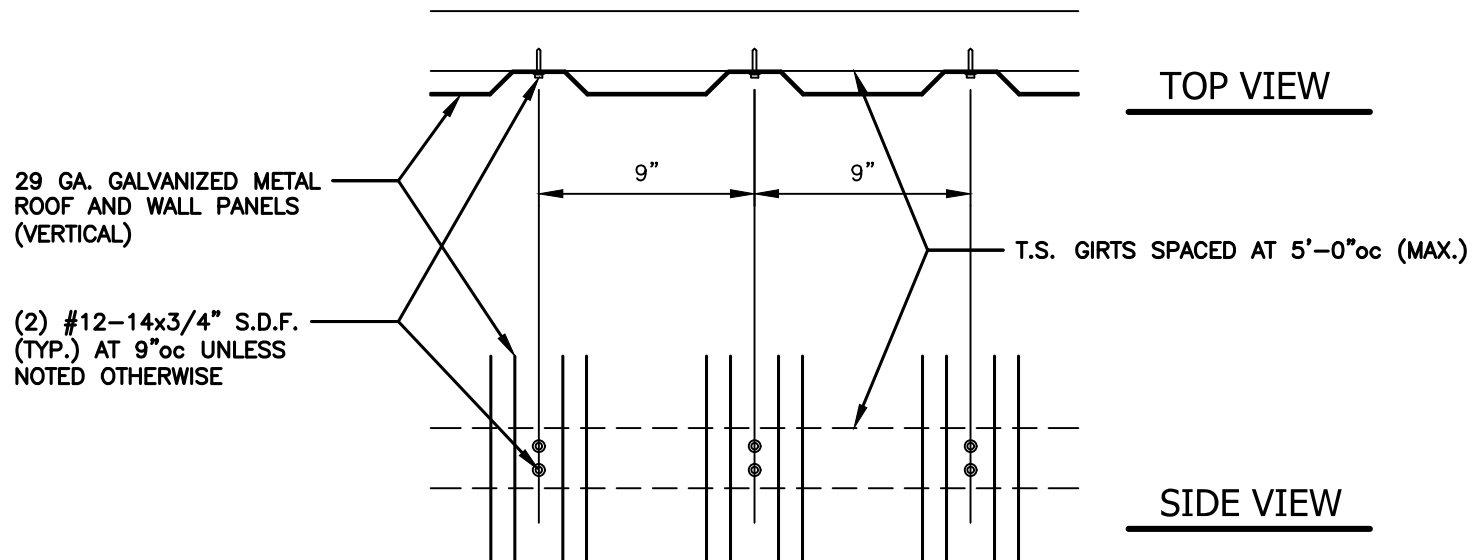
Date:  
09/29/25

Revisions:  
-

Project No.  
0125-0819

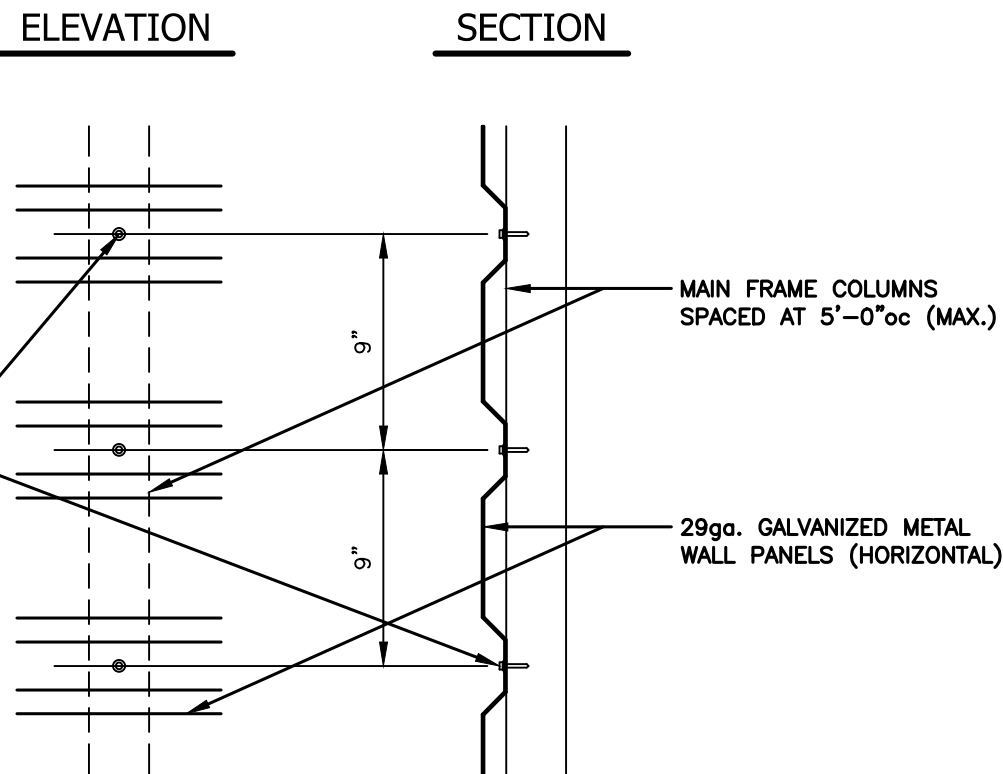
Sheet No.  
SOA





**(VERTICAL) SIDING CONNECTION DETAIL**

SCALE: 1-1/2" = 1'-0"



**(HORIZONTAL) SIDING CONNECTION DETAIL**

SCALE: 1-1/2" = 1'-0"

**APPENDIX "B"  
STRUCTURAL DESIGN**

DESIGN LOADS:

IMPORTANCE FACTORS	WIND	(1w)	1.00	
	SNOW	(1s)	1.00	
	SEISMIC	(1e)	1.00	
DEAD LOADS	ROOF	13	P.S.F.	
	ROOF COLLATERAL	0	P.S.F.	
LIVE LOADS	ROOF	20	P.S.F.	
GROUND SNOW LOAD:		5	P.S.F.	* DRIFT LOAD HAS NOT BEEN CALCULATED
WIND LOAD:	BASIC WIND SPEED	129	M.P.H.	ASCE 7-16
	EXPOSURE CATAGORY	C		

SEISMIC DESIGN CATAGORY  A  B  C  D

PROVIDE THE FOLLOWING SEISMIC DESIGN PARAMETERS:

OCCUPANCY CATEGORY I

SPECTRAL RESPONSE ACCELERATION  $S_s$  8.9 %g  $S_1$  5.7 %g

SITE CLASSIFICATION D  FIELD TEST  PRESUMPTIVE  HISTORICAL DATA

BASIC STRUCTURAL SYSTEM (CHECK ONE)

<input type="checkbox"/> BEARING WALL	<input type="checkbox"/> DUAL W/ SPECTRAL MOMENT FRAME
<input checked="" type="checkbox"/> BUILDING FRAME	<input type="checkbox"/> DUAL W/ INTERMEDIATE R/C OR SPECIAL STEEL
<input type="checkbox"/> MOMENT FRAME	<input type="checkbox"/> INVERTED PENDULUM

ANALYSIS PROCEDURE  SIMPLIFIED  EQUIVALANT LATERAL FORCE  MODAL

LATERAL DESIGN CONTROL?  EARTHQUAKE  WIND

SOIL BEARING CAPACITIES:  
PRESUMPTIVE BEARING CAPACITIES: 1,500 P.S.F.

GENERAL NOTES:

- MAX FRAME SPACING SHALL BE 60"oc UNLESS NOTED OTHERWISE.
- MAX. END-WALL COLUMN SPACING SHALL BE 60"oc UNLESS NOTED OTHERWISE.
- TUBE MATERIAL SHALL BE 2-1/2" x 2-1/2" x 14ga. 50 K.S.I. MIN. UNLESS NOTED OTHERWISE.
- ALL FASTENERS SHALL BE (2) #12 SELF TAPPING AT 9"oc UNLESS NOTED OTHERWISE.
- 1,500 PSF ASSUMED BEARING CAPACITY UNLESS NOTED OTHERWISE.
- THESE DRAWINGS ARE NOT DESIGNED FOR SLEEPING QUARTERS
- IF FRAMES ARE SPACED AT 48"o.c., THEN GROUND SNOW LOAD CAPACITY INCREASES TO 43.5 P.S.F..
- IF FRAMES ARE SPACED AT 42"o.c., THEN GROUND SNOW LOAD CAPACITY INCREASES TO 47 P.S.F..

**JCMT**  
ASSOCIATES, PLLC  
PO BOX 27  
Pilot Mountain, NC 28641  
828-310-7160

Roderick Ducre  
33076 Haines Drive  
Slidell LA 70460

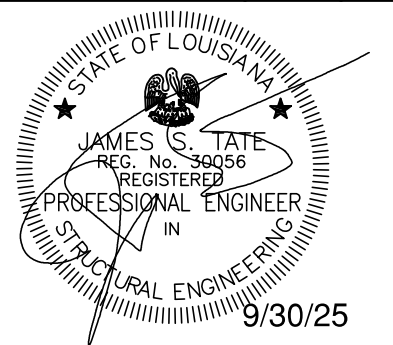
(PARTIALLY) ENCLOSED GABLE END BUILDING  
MAXIMUM >0' TO <30' WIDE x <16' MAXIMUM EAVE HEIGHT (BOX FRAME)  
(UP TO) 145 M.P.H. WIND ZONE - 35/43.5/47 P.S.F. SNOW LOAD(S)

Project No.  
0125-0819

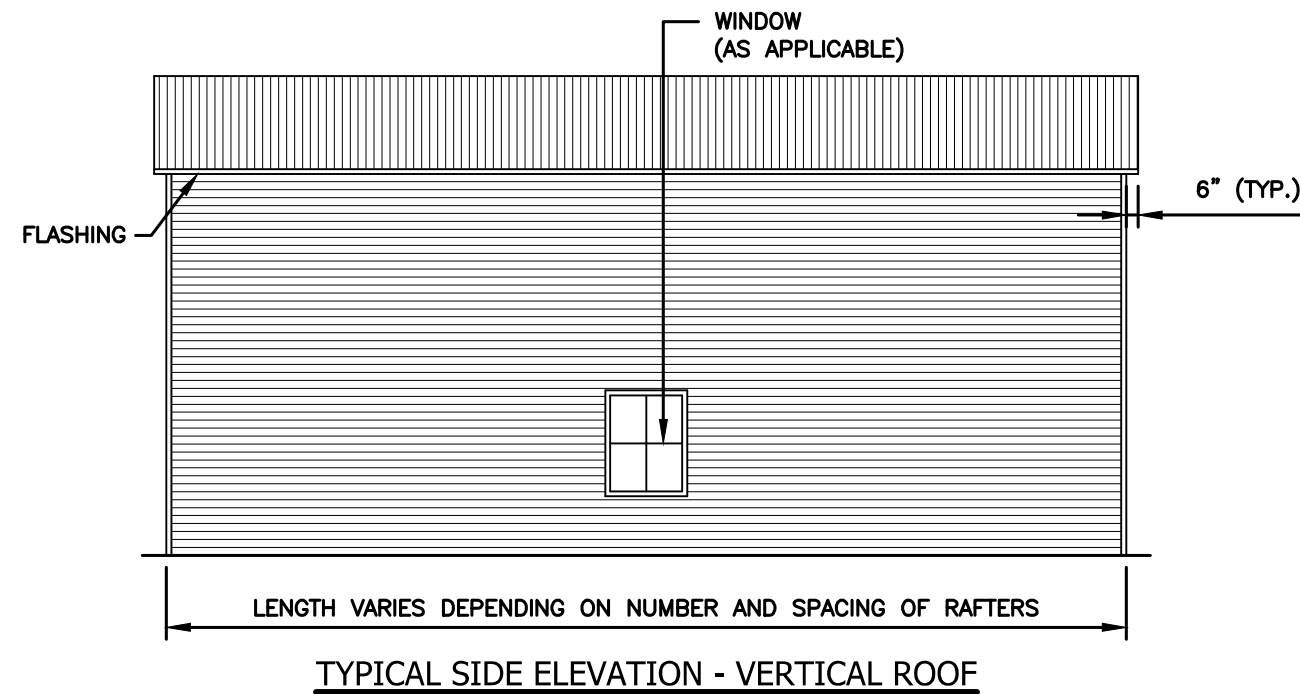
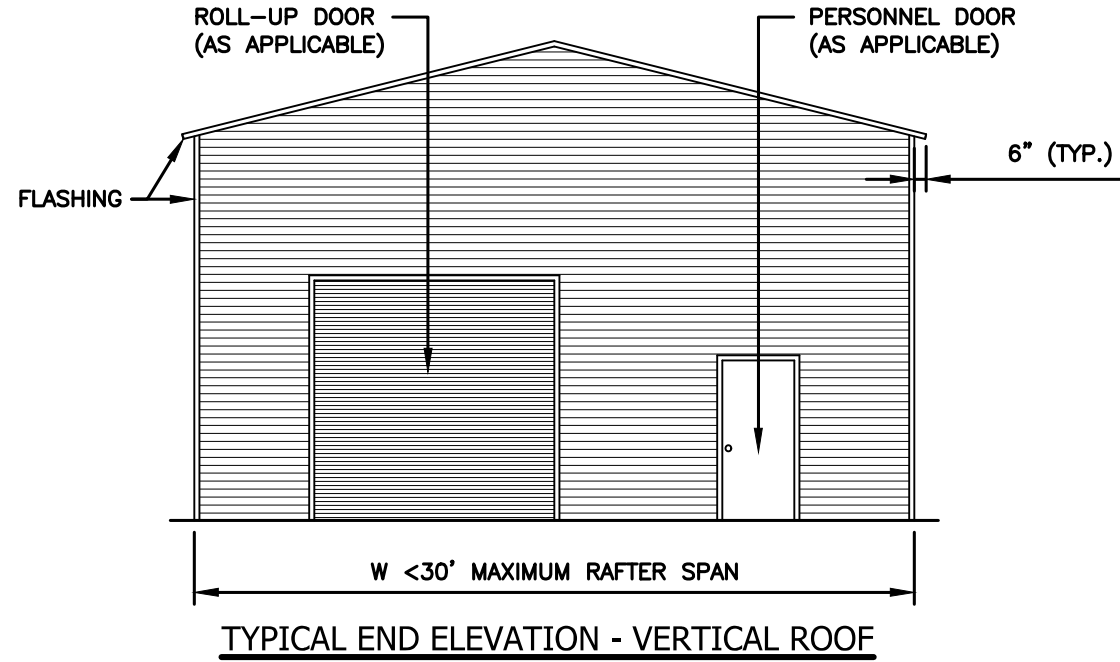
Sheet No.  
S0B

Date:  
09/29/25

Revisions:



BOX EVE FRAME RAFTER STURCTURE



**JCMT**  
ASSOCIATES, PLLC  
PO BOX 27  
Pilot Mountain, NC 28641  
828-310-7160

Roderick Ducre  
33076 Haines Drive  
Slidell LA 70460

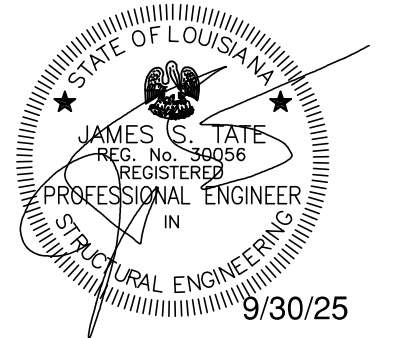
(PARTIALLY) ENCLOSED GABLE END BUILDING  
MAXIMUM >0' TO <30' WIDE x <16' MAXIMUM EAVE HEIGHT (BOX FRAME)  
(UP TO) 145 M.P.H. WIND ZONE - 35/43.5/47 P.S.F. SNOW LOAD(S)

Date:  
09/29/25

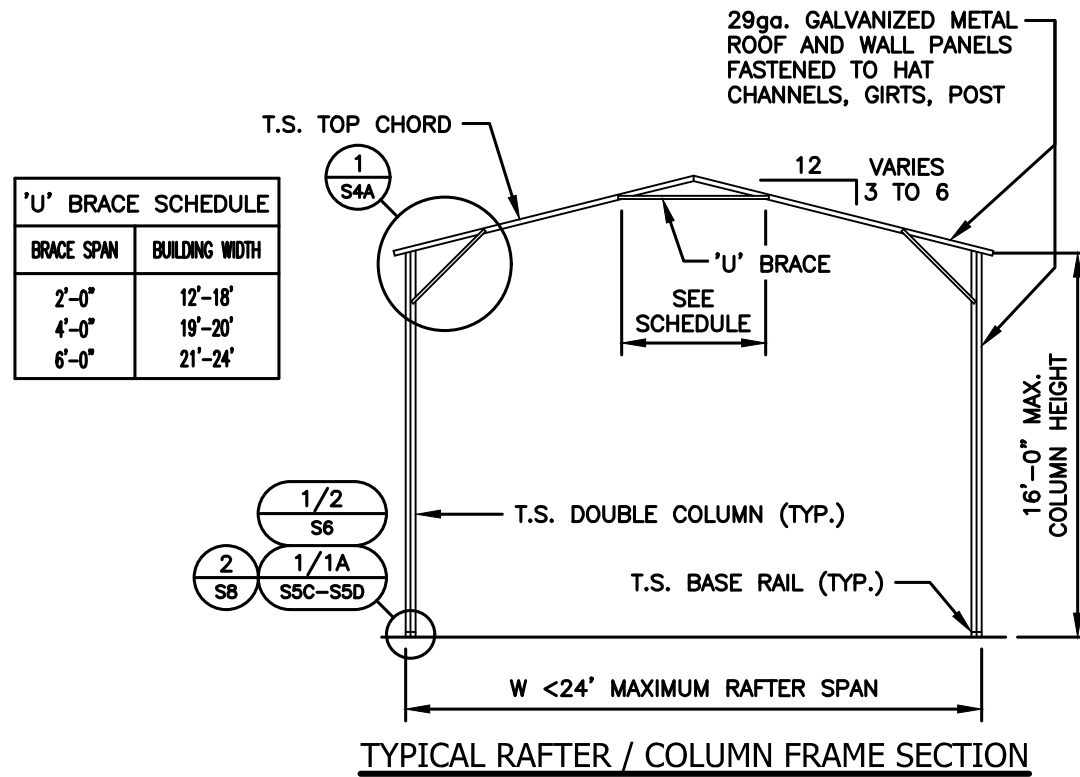
Revisions:  
-

Project No.  
0125-0819

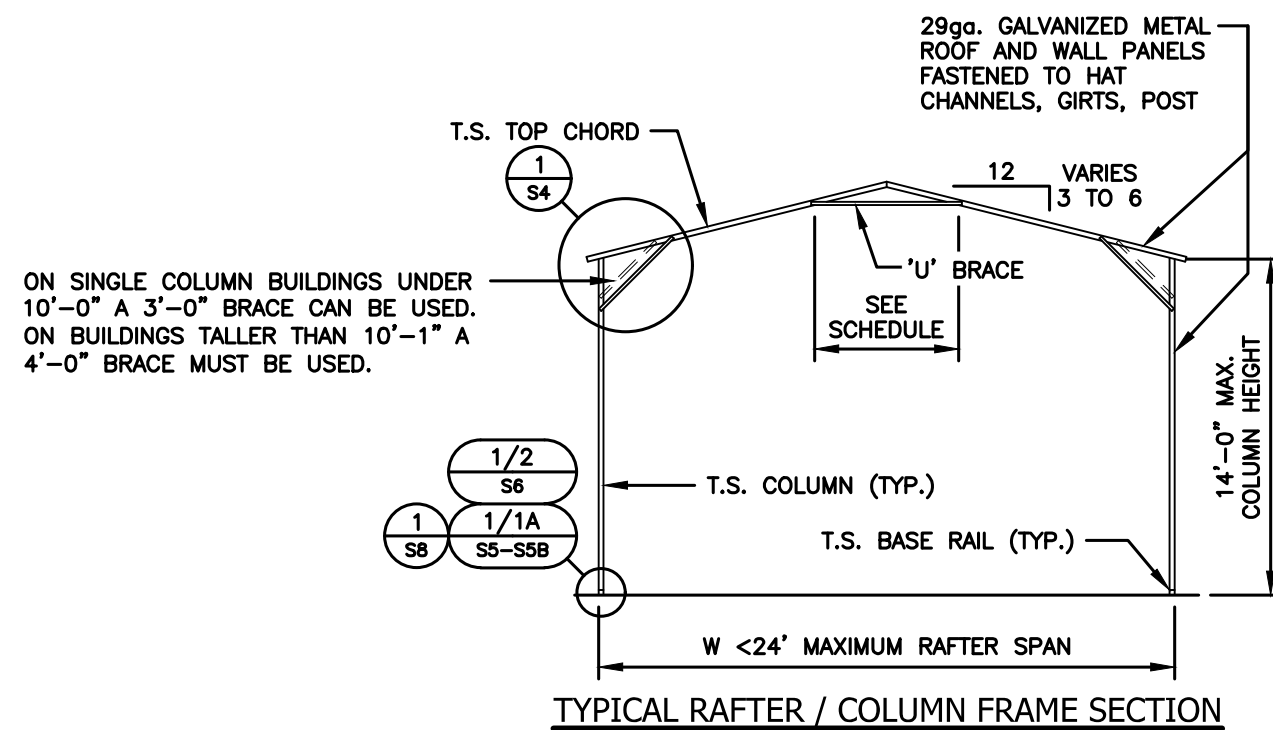
Sheet No.  
S1



(<24' WIDE / <16' HIGH) BOX EVE RAFTER END WALL SECTIONS

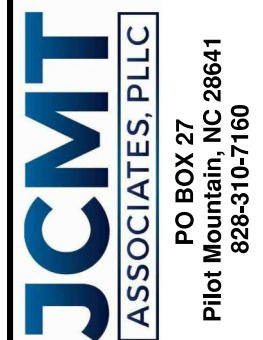


**NOTE:**  
H.S.S. 2-1/2"x2-1/2"x14ga. OR 2-1/4"x2-1/4"x12ga.  
MATERIAL MAY BE USED FOR TRUSS METAL.



ON SINGLE COLUMN BUILDINGS UNDER 10'-0" A 3'-0" BRACE CAN BE USED. ON BUILDINGS TALLER THAN 10'-1" A 4'-0" BRACE MUST BE USED.

'U' BRACE SCHEDULE	
BRACE SPAN	BUILDING WIDTH
2'-0"	12'-18'
4'-0"	19'-20'
6'-0"	21'-24'

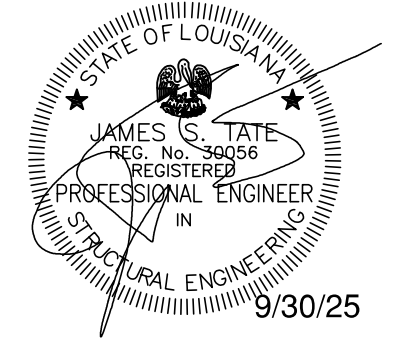


Roderick Ducre  
33076 Haines Drive  
Slidell LA 70460

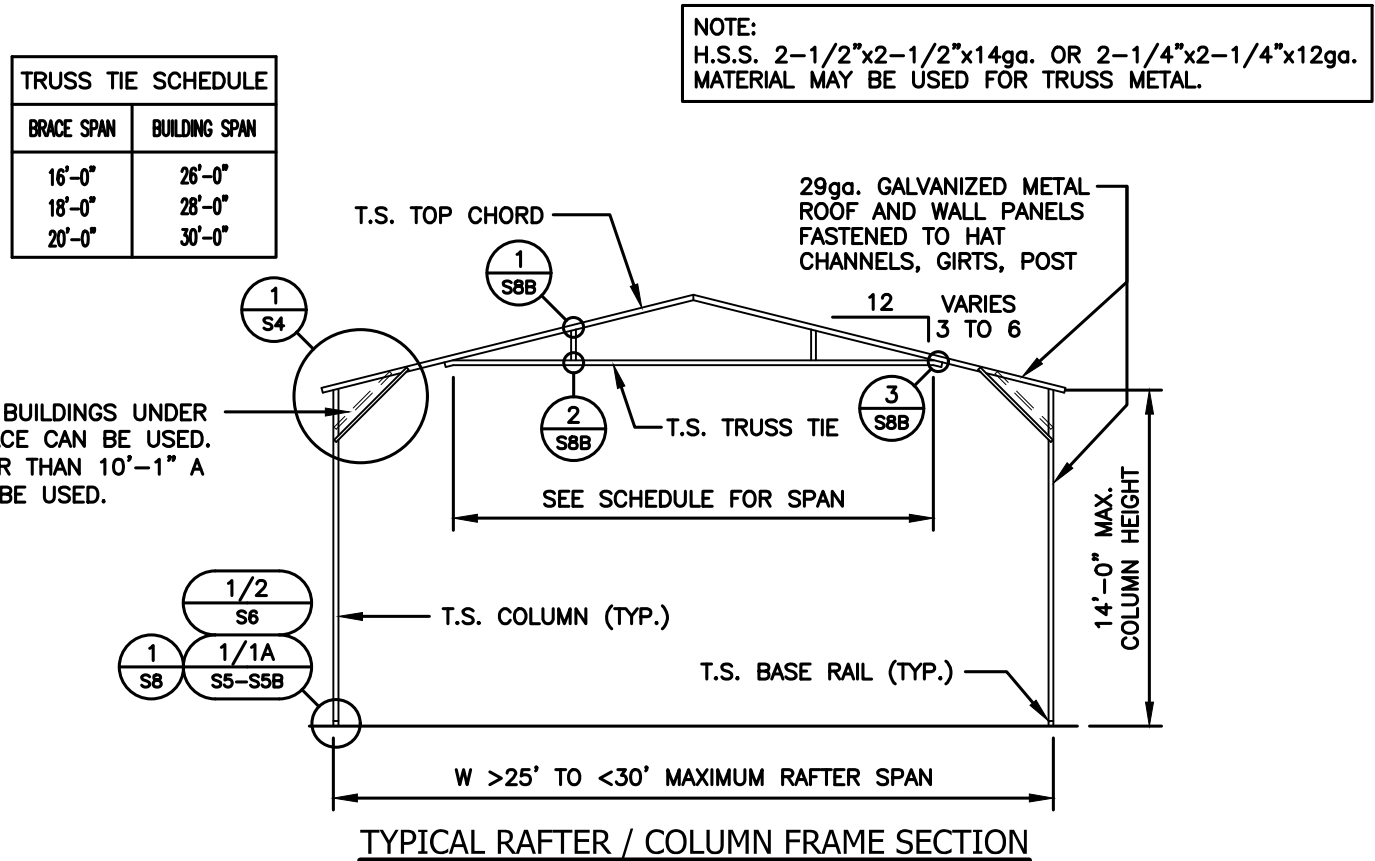
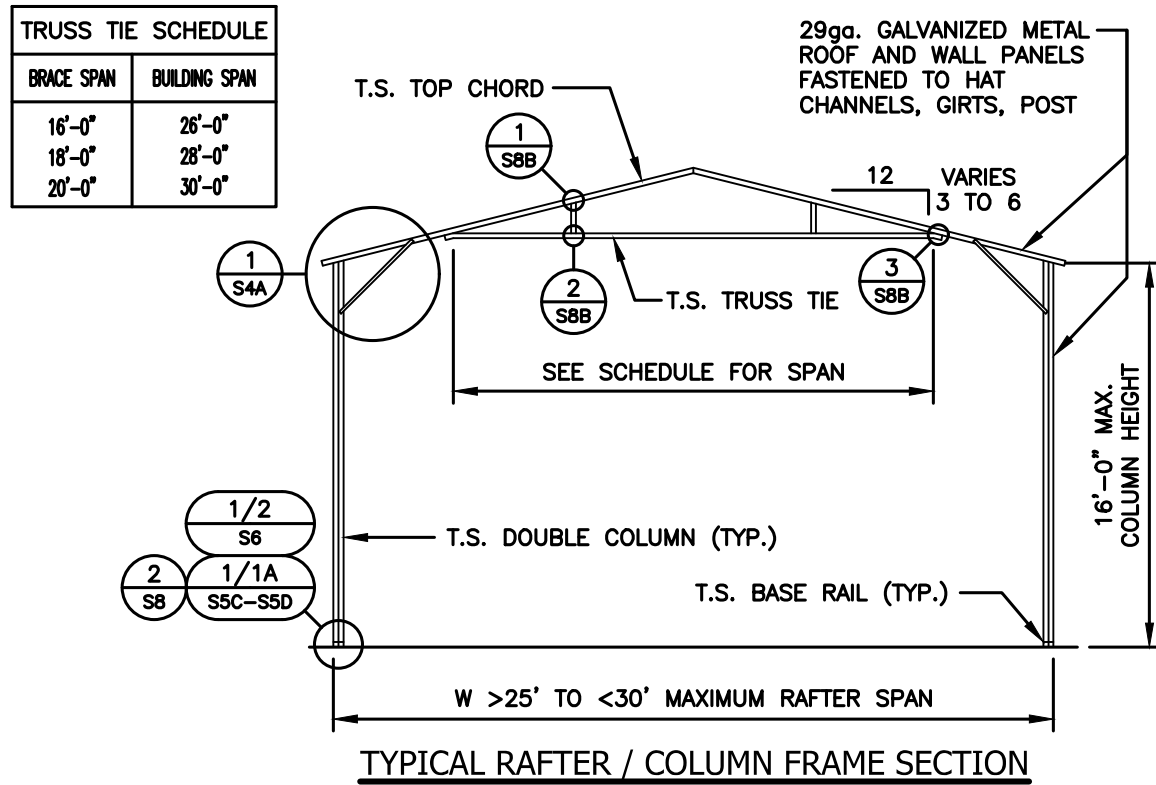
Project No.  
0125-0819  
Sheet No.  
S2

(PARTIALLY) ENCLOSED GABLE END BUILDING  
MAXIMUM >0' TO <30' WIDE x <16' MAXIMUM EAVE HEIGHT (BOX FRAME)  
(UP TO) 145 M.P.H. WIND ZONE - 35/43.5/47 P.S.F. SNOW LOAD(S)

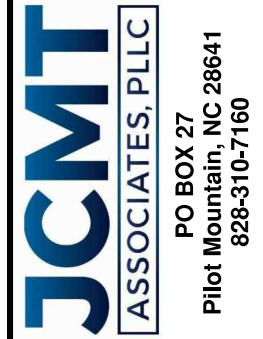
Date:  
09/29/25  
Revisions:



(>25' - <30' WIDE / <16' HIGH) BOX EVE RAFTER END WALL SECTIONS



ON SINGLE COLUMN BUILDINGS UNDER 10'-0" A 3'-0" BRACE CAN BE USED. ON BUILDINGS TALLER THAN 10'-1" A 4'-0" BRACE MUST BE USED.

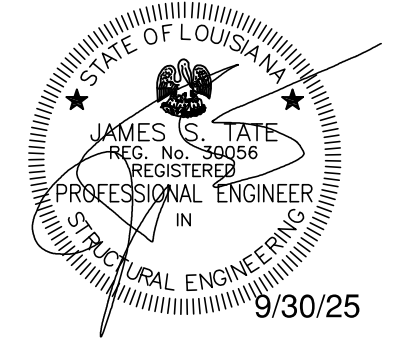


Roderick Ducre  
33076 Haines Drive  
Slidell LA 70460

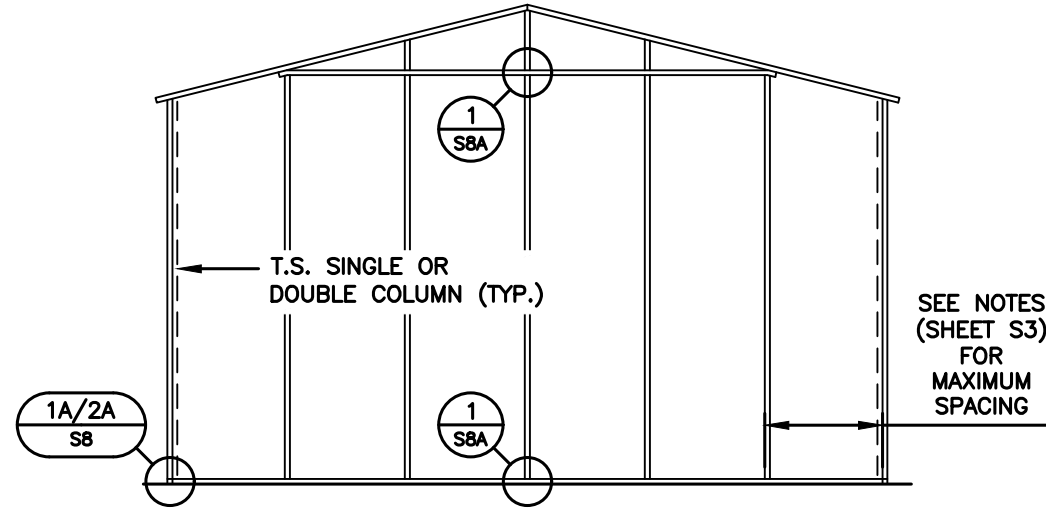
(PARTIALLY) ENCLOSED GABLE END BUILDING  
MAXIMUM >0' TO <30' WIDE x <16' MAXIMUM EAVE HEIGHT (BOX FRAME)  
(UP TO) 145 M.P.H. WIND ZONE - 35/43.5/47 P.S.F. SNOW LOAD(S)

Project No.  
0125-0819  
Sheet No.  
S2A

Date:  
09/29/25  
Revisions:

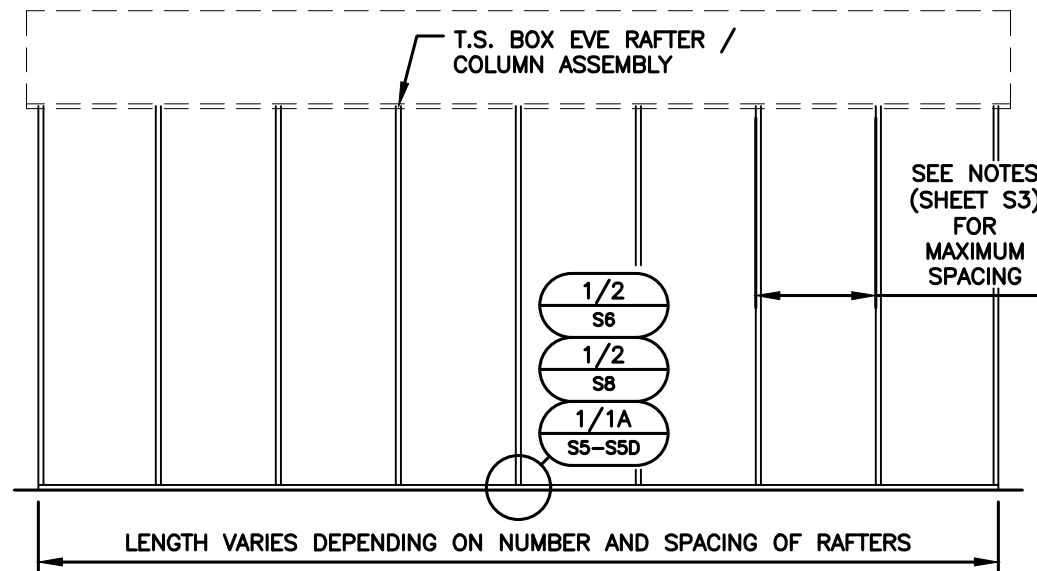


TYPICAL SIDE / END FRAMING ELEVATIONS



TYPICAL BOX EVE RAFTER / END WALL COLUMN FRAME SECTION

NOTE:  
H.S.S. 2-1/2"x2-1/2"x14ga. OR 2-1/4"x2-1/4"x12ga.  
MATERIAL MAY BE USED FOR TRUSS METAL.



TYPICAL RAFTER / COLUMN SIDE FRAME SECTION

**JCMT**  
ASSOCIATES, PLLC  
PO BOX 27  
Pilot Mountain, NC 28641  
828-310-7160

Roderick Ducre  
33076 Haines Drive  
Slidell LA 70460

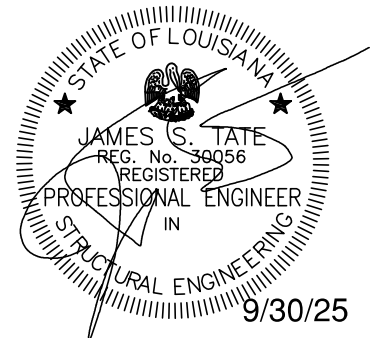
(PARTIALLY) ENCLOSED GABLE END BUILDING  
MAXIMUM >0' TO <30' WIDE x <16' MAXIMUM EAVE HEIGHT (BOX FRAME)  
(UP TO) 14.5 M.P.H. WIND ZONE - 35/43.5/47 P.S.F. SNOW LOAD(S)

Project No.  
0125-0819

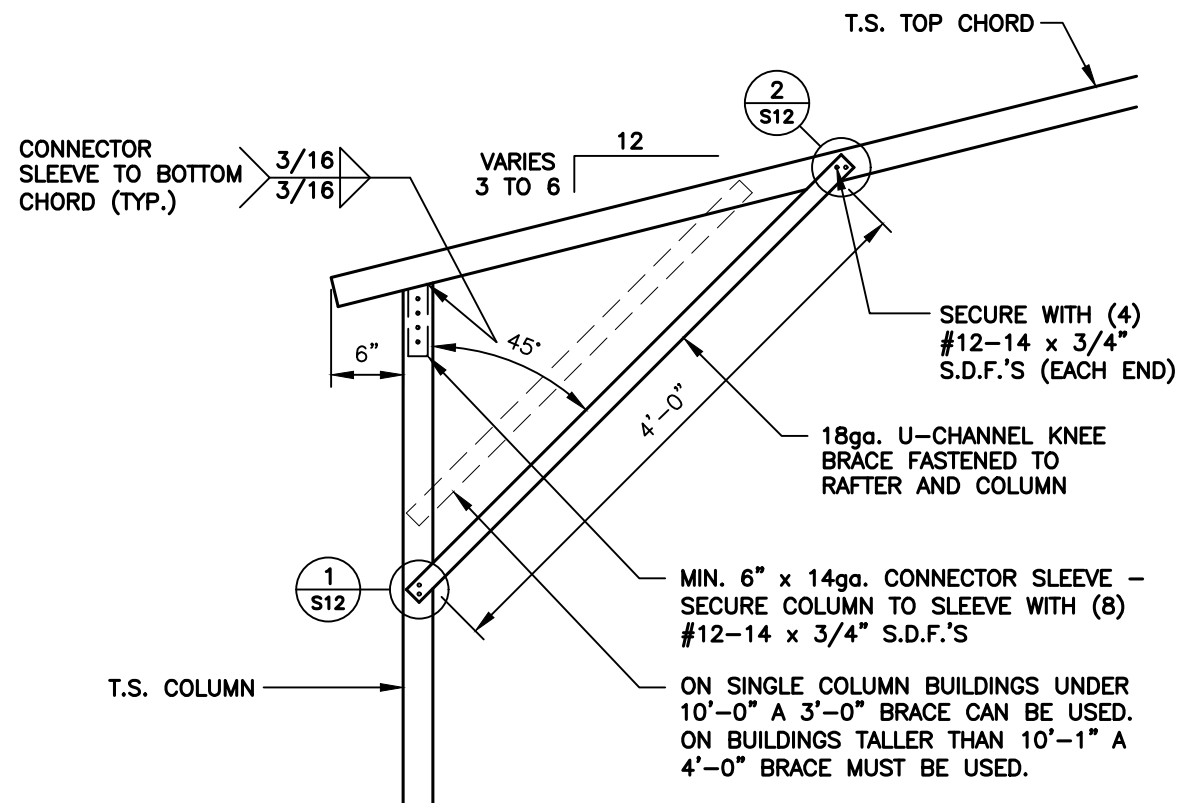
Sheet No.  
S3

Date:  
09/29/25

Revisions:  
-

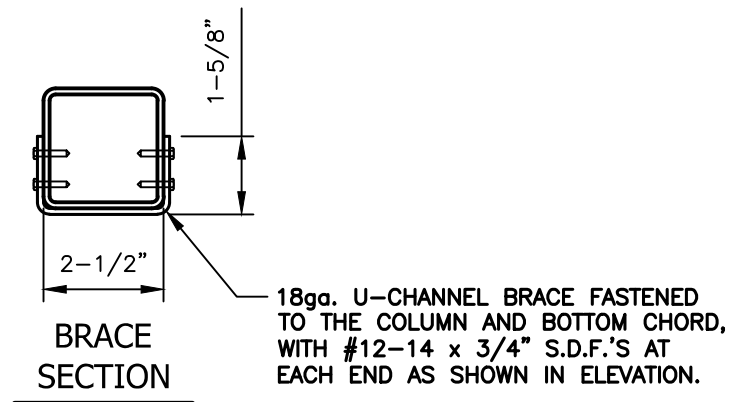


SINGLE COLUMN OPTIONS (<14'-0" COLUMN HEIGHT)



1 BOX EAVE / CORNER POST CONNECTION DETAIL FOR HEIGHTS <14'-0"

S4 SCALE: 3/4" = 1'-0"



**JCMT**  
ASSOCIATES, PLLC  
PO BOX 27  
Pilot Mountain, NC 28641  
828-310-7160

Roderick Ducre  
33076 Haines Drive  
Slidell LA 70460

Project No.  
0125-0819

Sheet No.  
S4

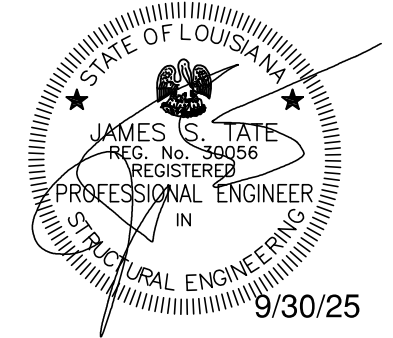
(PARTIALLY) ENCLOSED GABLE END BUILDING

MAXIMUM >0' TO <30' WIDE x <16' MAXIMUM EAVE HEIGHT (BOX FRAME)

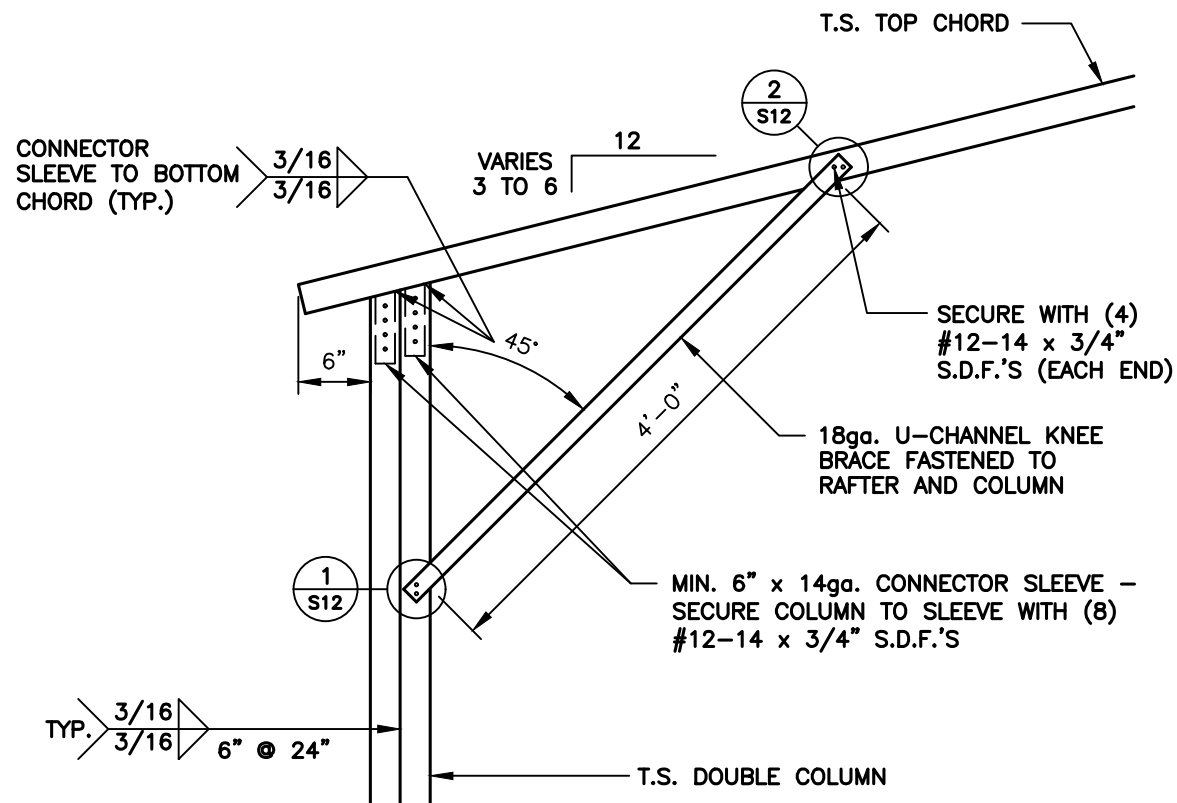
(UP TO) 14.5 M.P.H. WIND ZONE - 35/43.5/47 P.S.F. SNOW LOAD(S)

Date:  
09/29/25

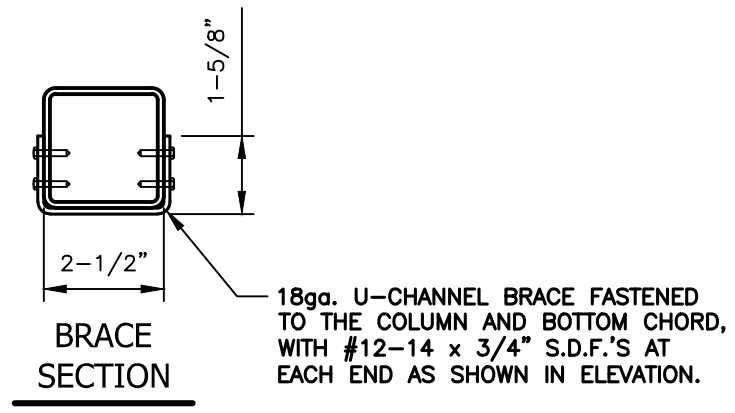
Revisions:  
-



DOUBLE COLUMN OPTIONS (>14'-1" TO <16'-0" COLUMN HEIGHT)



1 BOX EAVE / CORNER POST CONNECTION DETAIL FOR HEIGHTS >14'-1" TO <16'-0"  
 S4A SCALE: 3/4" = 1'-0"



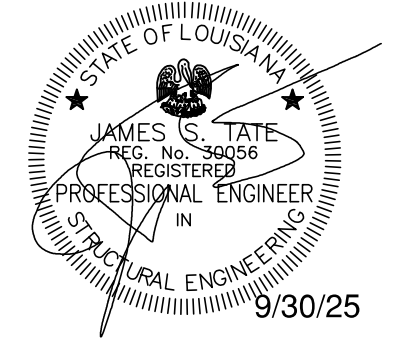
**JCMT**  
 ASSOCIATES, PLLC  
 PO BOX 27  
 Pilot Mountain, NC 28641  
 828-310-7160

Roderick Ducre  
 33076 Haines Drive  
 Slidell LA 70460

(PARTIALLY) ENCLOSED GABLE END BUILDING  
 MAXIMUM >0' TO <30' WIDE x <16' MAXIMUM EAVE HEIGHT (BOX FRAME)  
 (UP TO) 14.5 M.P.H. WIND ZONE - 35/43.5/47 P.S.F. SNOW LOAD(S)

Project No.  
 0125-0819  
 Sheet No.  
 S4A

Date:  
 09/29/25  
 Revisions:  
 -



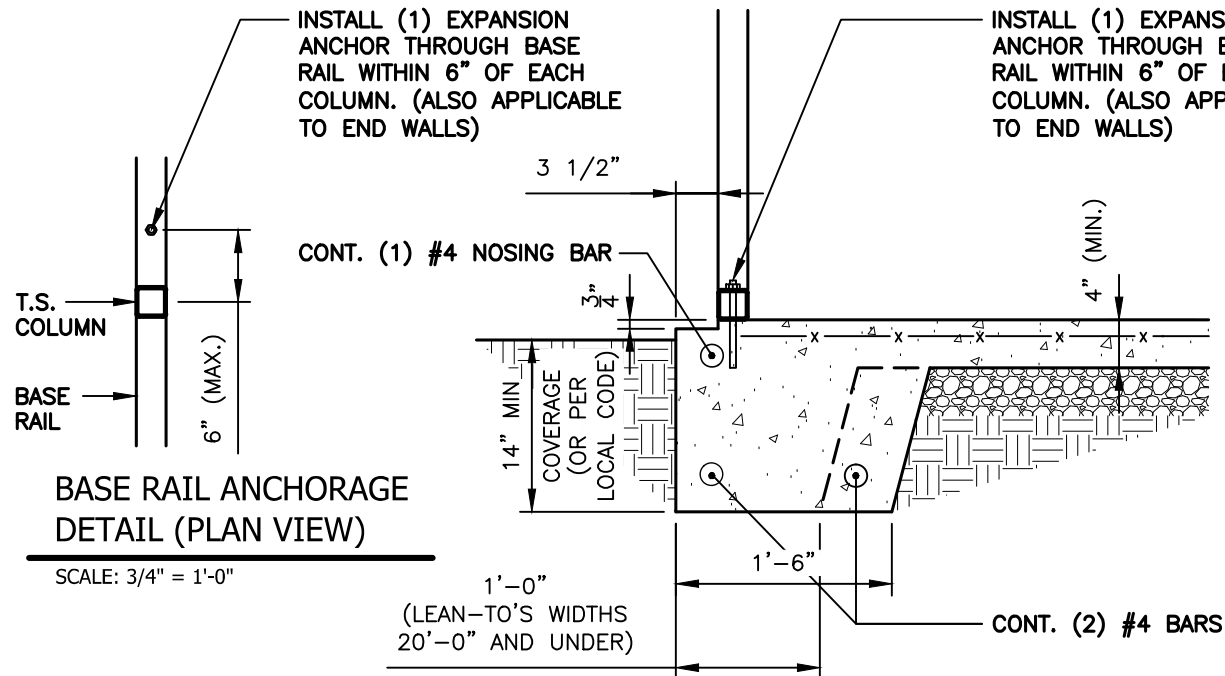
**(LEAN-TO) SINGLE COLUMN OPTIONS  
(ANCHOR BOLTS)**

ANCHORAGE BOLT SCHEDULE	
WIND SPEED	BOLT SIZE
UP TO 115 M.P.H.	1/2" x 6-1/2" EXPANSION ANCHOR
UP TO 125 M.P.H.	1/2" x 6-1/2" EXPANSION ANCHOR
UP TO 135 M.P.H.	1/2" x 9" EXPANSION ANCHOR
UP TO 145 M.P.H.	1/2" x 9" EXPANSION ANCHOR

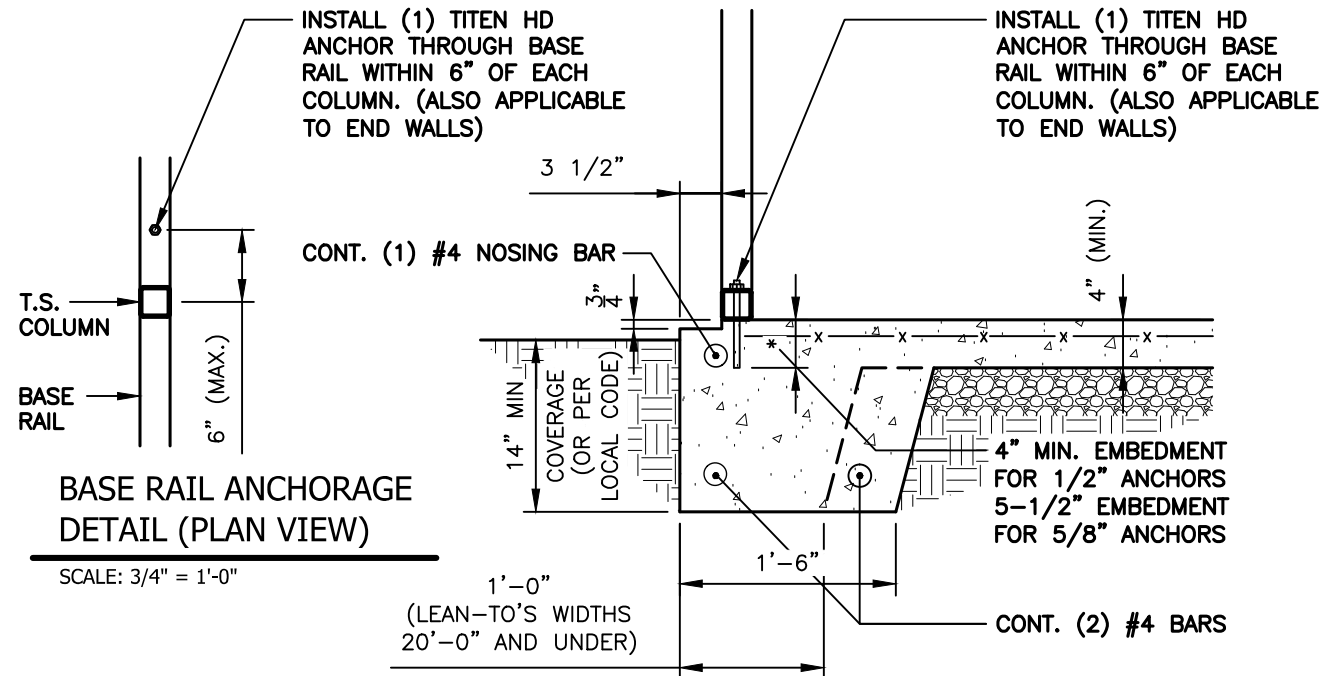
GENERAL NOTE:  
ALL CONCRETE MONOLITHIC SLAB DESIGN BASED ON MINIMUM SOIL BEARING CAPACITY OF 1,500 P.S.F.  
CONCRETE:  
CONCRETE SHALL HAVE A MINIMUM SPECIFIED COMPRESSIVE STRENGTH OF 3,000 P.S.I. AT 28 DAYS.  
COVER OVER REINFORCING STEEL:  
FOR FOUNDATIONS, MINIMUM CONCRETE COVER OVER REINFORCING BARS SHALL BE PER ACI-318: 3" IN FOUNDATIONS WHERE THE CONCRETE IS CAST AGAINST AND PERMANENTLY IN CONTACT WITH THE EARTH OR EXPOSED TO THE EARTH AND WEATHER AND 1-1/2" ELSEWHERE.  
REINFORCING STEEL:  
THE TURNDOWN REINFORCING STEEL SHALL BE ASTM A615 GRADE 60. THE SLAB REINFORCEMENT SHALL BE WELDED WIRE FABRIC MEETING ASTM A185 OR FIBERGLASS FIBER REINFORCEMENT.  
REINFORCEMENT MAY BE BENT IN THE SHOP OR IN THE FIELD PROVIDED:  
1. REINFORCEMENT IS BENT COLD.  
2. THE DIAMETER OF THE BEND, MEASURED ON THE INSIDE OF THE BAR, IS NOT LESS THAN SIX-BAR DIAMETERS.  
3. REINFORCEMENT PARTIALLY EMBEDDED IN CONCRETE SHALL NOT BE FIELD BENT.

**(LEAN-TO) SINGLE COLUMN OPTIONS  
(TITEN HD ANCHORS)**

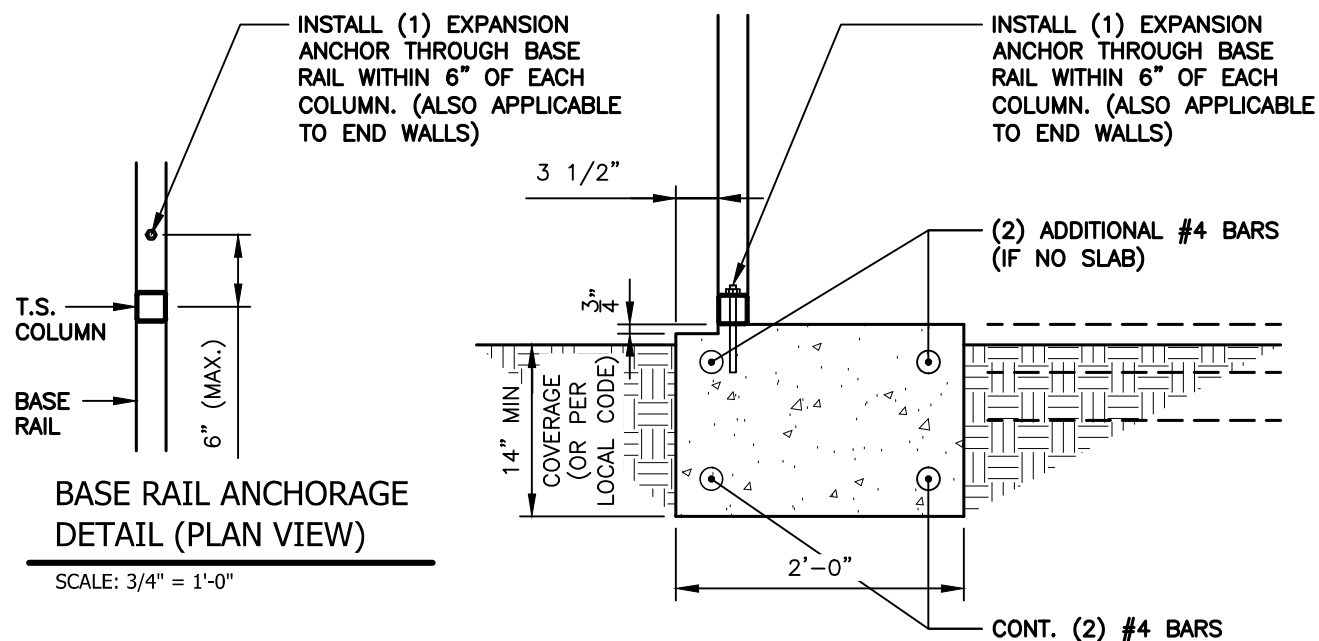
ANCHORAGE BOLT SCHEDULE	
WIND SPEED	BOLT SIZE
UP TO 115 M.P.H.	1/2" x 4" EMBEDMENT (TITEN HD)
UP TO 125 M.P.H.	1/2" x 4" EMBEDMENT (TITEN HD)
UP TO 135 M.P.H.	5/8" x 5-1/2" EMBEDMENT (TITEN HD)
UP TO 145 M.P.H.	5/8" x 5-1/2" EMBEDMENT (TITEN HD)



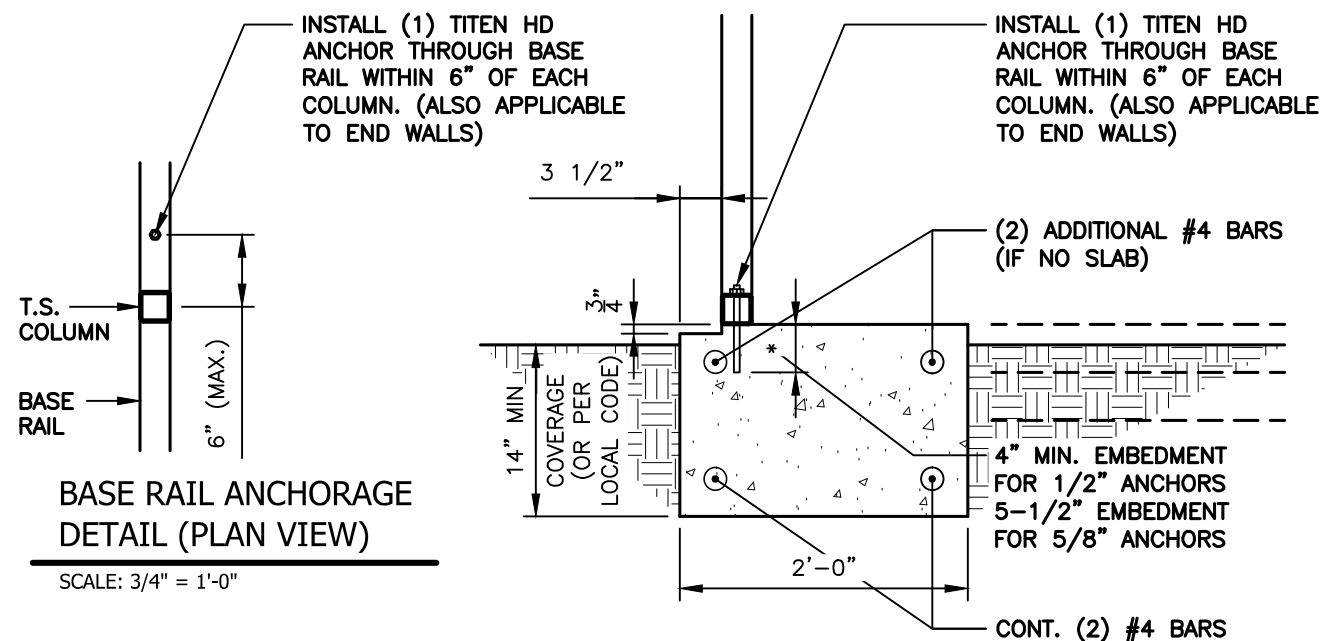
**1**  
**S5** BASE RAIL ANCHORAGE DETAIL  
SCALE: 3/4" = 1'-0"



**1B**  
**S5** BASE RAIL ANCHORAGE DETAIL (TITEN HD)  
SCALE: 3/4" = 1'-0"



**1A**  
**S5** BASE RAIL ANCHORAGE DETAIL (NO SLAB)  
SCALE: 3/4" = 1'-0"



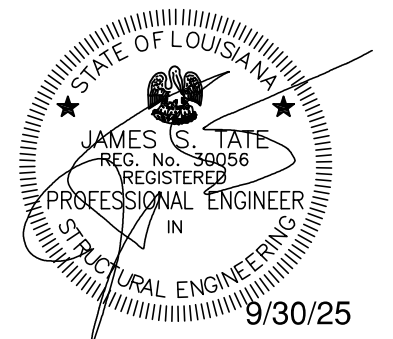
**1C**  
**S5** BASE RAIL ANCHORAGE DETAIL (NO SLAB - TITEN HD)  
SCALE: 3/4" = 1'-0"

**JCMT**  
ASSOCIATES, PLLC  
PO BOX 27  
Pilot Mountain, NC 28641  
828-310-7160

Roderick Ducre  
33076 Haines Drive  
Slidell LA 70460

(PARTIALLY) ENCLOSED GABLE END BUILDING  
MAXIMUM >0' TO <30' WIDE x <16' MAXIMUM EAVE HEIGHT (BOX FRAME)  
(UP TO) 145 M.P.H. WIND ZONE - 35/43.5/47 P.S.F. SNOW LOAD(S)

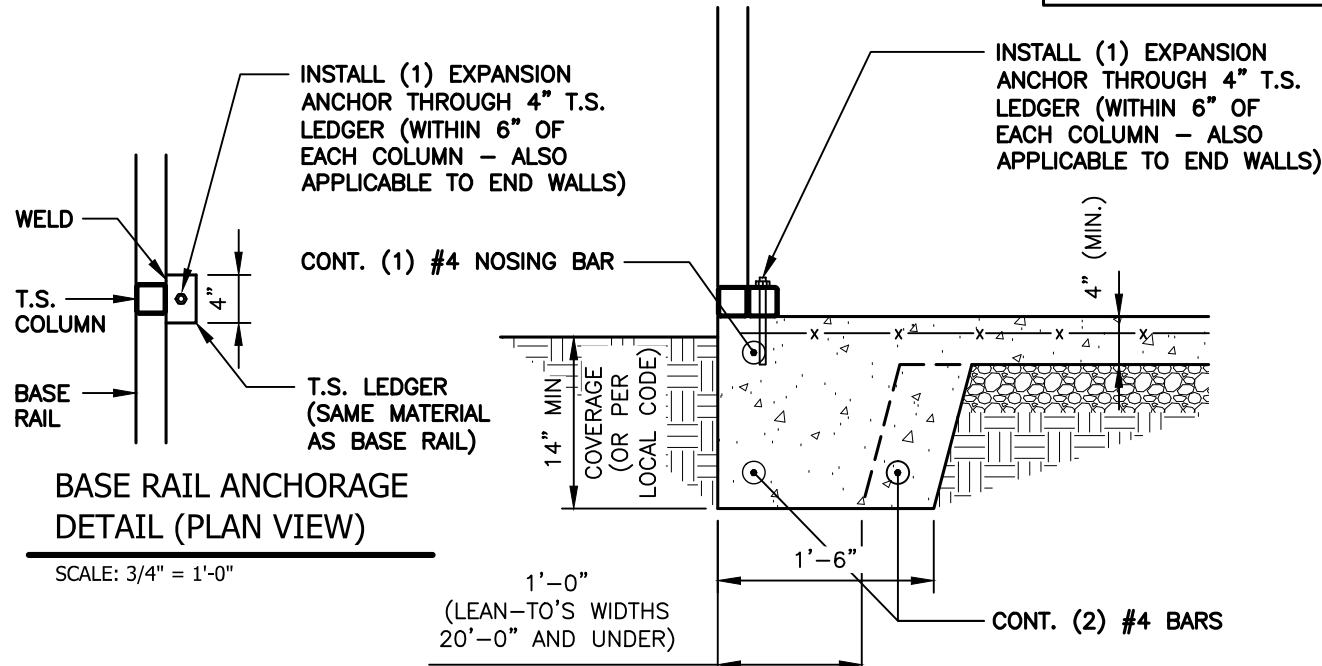
Date: 09/29/25  
Revisions:



**(LEAN-TO) SINGLE COLUMN OPTIONS - NO SIDING LEDGE  
(ANCHOR BOLTS)**

ANCHORAGE BOLT SCHEDULE	
WIND SPEED	BOLT SIZE
UP TO 115 M.P.H.	1/2" x 6-1/2" EXPANSION ANCHOR
UP TO 125 M.P.H.	1/2" x 6-1/2" EXPANSION ANCHOR
UP TO 135 M.P.H.	1/2" x 9" EXPANSION ANCHOR
UP TO 145 M.P.H.	1/2" x 9" EXPANSION ANCHOR

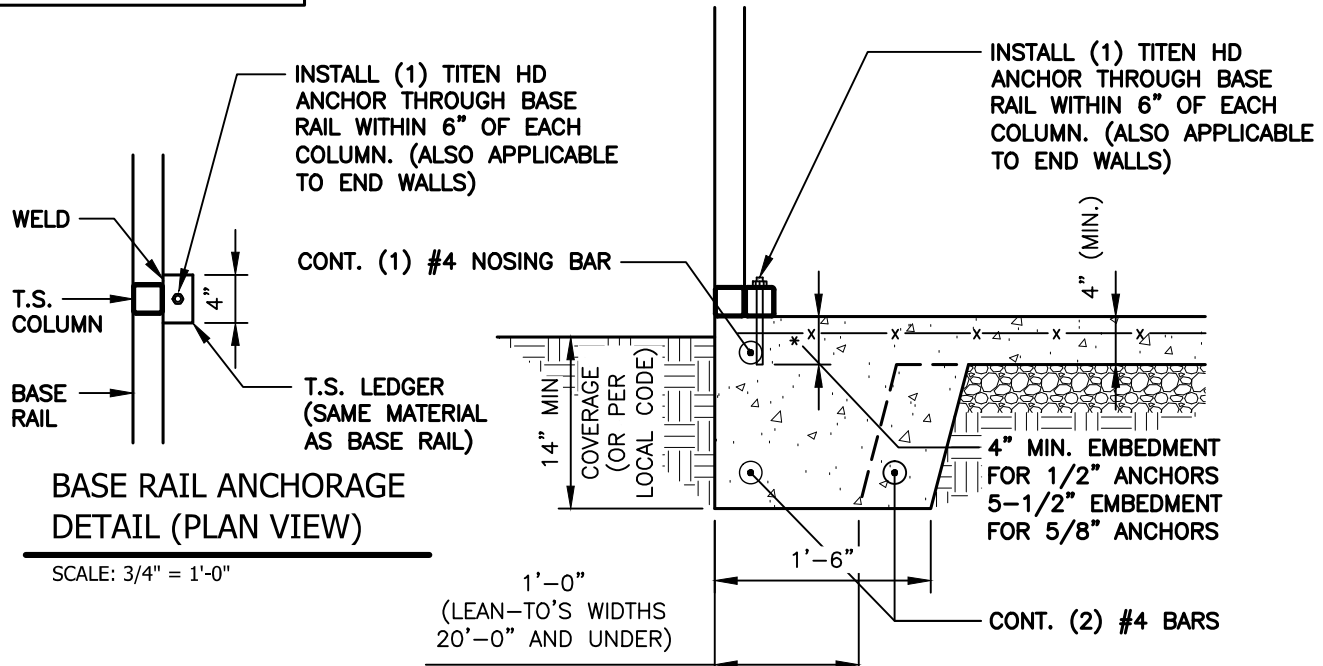
GENERAL NOTE:  
ALL CONCRETE MONOLITHIC SLAB DESIGN BASED ON MINIMUM SOIL BEARING CAPACITY OF 1,500 P.S.F.  
CONCRETE:  
CONCRETE SHALL HAVE A MINIMUM SPECIFIED COMPRESSIVE STRENGTH OF 3,000 P.S.I. AT 28 DAYS.  
COVER OVER REINFORCING STEEL:  
FOR FOUNDATIONS, MINIMUM CONCRETE COVER OVER REINFORCING BARS SHALL BE PER ACI-318: 3" IN FOUNDATIONS WHERE THE CONCRETE IS CAST AGAINST AND PERMANENTLY IN CONTACT WITH THE EARTH OR EXPOSED TO THE EARTH AND WEATHER AND 1-1/2" ELSEWHERE.  
REINFORCING STEEL:  
THE TURNDOWN REINFORCING STEEL SHALL BE ASTM A615 GRADE 60. THE SLAB REINFORCEMENT SHALL BE WELDED WIRE FABRIC MEETING ASTM A185 OR FIBERGLASS FIBER REINFORCEMENT.  
REINFORCEMENT MAY BE BENT IN THE SHOP OR IN THE FIELD PROVIDED:  
1. REINFORCEMENT IS BENT COLD.  
2. THE DIAMETER OF THE BEND, MEASURED ON THE INSIDE OF THE BAR, IS NOT LESS THAN SIX-BAR DIAMETERS.  
3. REINFORCEMENT PARTIALLY EMBEDDED IN CONCRETE SHALL NOT BE FIELD BENT.



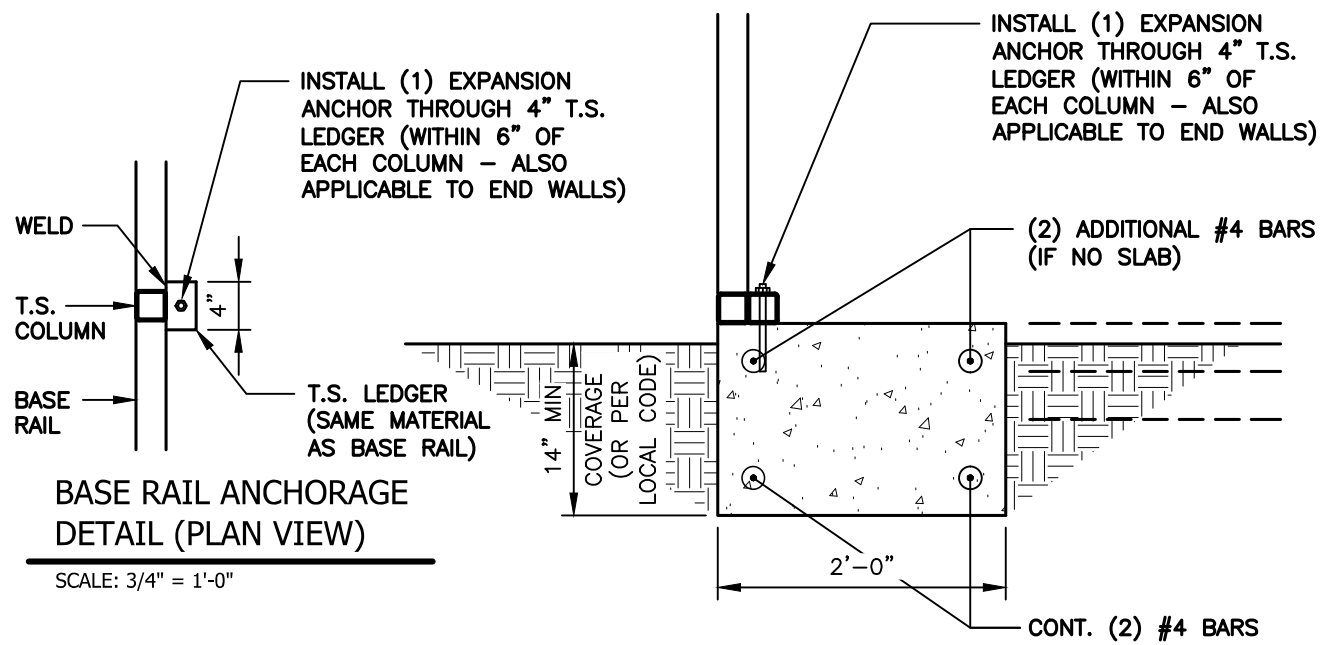
**1**  
**S5A** BASE RAIL ANCHORAGE DETAIL  
SCALE: 3/4" = 1'-0"

**(LEAN-TO) SINGLE COLUMN OPTIONS - NO SIDING LEDGE  
(TITEN HD ANCHORS)**

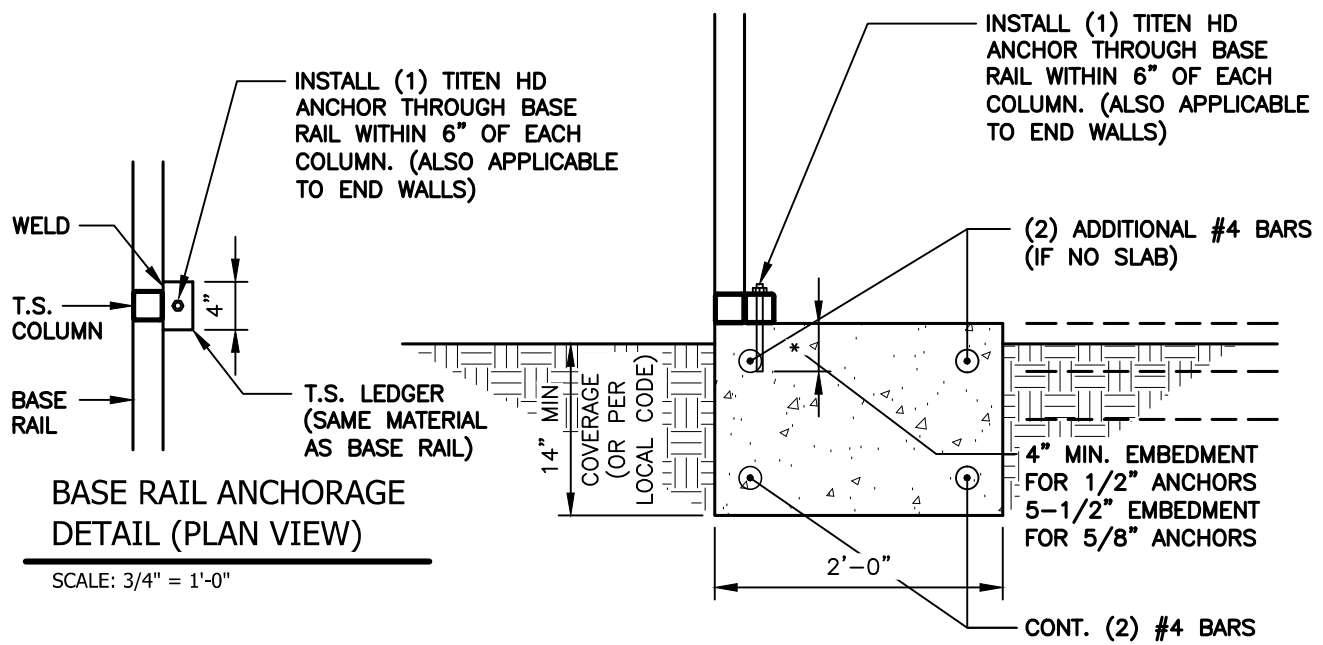
ANCHORAGE BOLT SCHEDULE	
WIND SPEED	BOLT SIZE
UP TO 115 M.P.H.	1/2" x 4" EMBEDMENT (TITEN HD)
UP TO 125 M.P.H.	1/2" x 4" EMBEDMENT (TITEN HD)
UP TO 135 M.P.H.	5/8" x 5-1/2" EMBEDMENT (TITEN HD)
UP TO 145 M.P.H.	5/8" x 5-1/2" EMBEDMENT (TITEN HD)



**1B**  
**S5A** BASE RAIL ANCHORAGE DETAIL (TITEN HD)  
SCALE: 3/4" = 1'-0"



**1A**  
**S5A** BASE RAIL ANCHORAGE DETAIL (NO SLAB)  
SCALE: 3/4" = 1'-0"



**1C**  
**S5A** BASE RAIL ANCHORAGE DETAIL (NO SLAB - TITEN HD)  
SCALE: 3/4" = 1'-0"

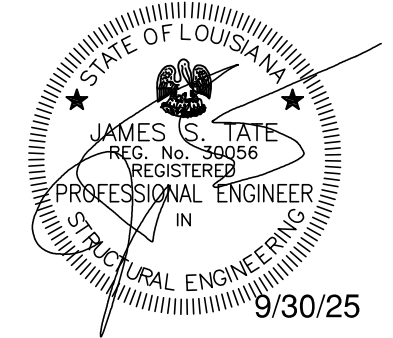
**JCMT**  
ASSOCIATES, PLLC  
PO BOX 27  
Pilot Mountain, NC 28641  
828-310-7160

Roderick Ducre  
33076 Haines Drive  
Slidell LA 70460

Project No.  
0125-0819  
Sheet No.  
S5A

(PARTIALLY) ENCLOSED GABLE END BUILDING  
MAXIMUM >0' TO <30' WIDE x <16' MAXIMUM EAVE HEIGHT (BOX FRAME)  
(UP TO) 145 M.P.H. WIND ZONE - 35/43.5/47 P.S.F. SNOW LOAD(S)

Date:  
09/29/25  
Revisions:



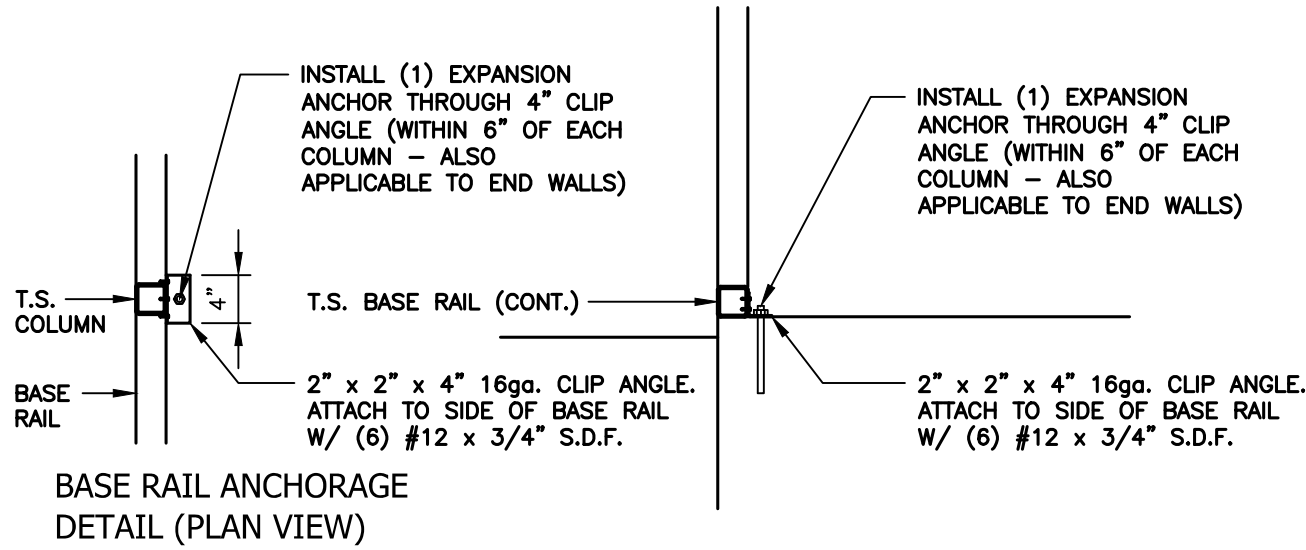
**(LEAN-TO) SINGLE COLUMN OPTIONS - NO SIDING LEDGE  
(ANCHOR BOLTS)**

ANCHORAGE BOLT SCHEDULE	
WIND SPEED	BOLT SIZE
UP TO 115 M.P.H.	1/2" x 6-1/2" EXPANSION ANCHOR
UP TO 125 M.P.H.	1/2" x 6-1/2" EXPANSION ANCHOR
UP TO 135 M.P.H.	1/2" x 9" EXPANSION ANCHOR
UP TO 145 M.P.H.	1/2" x 9" EXPANSION ANCHOR

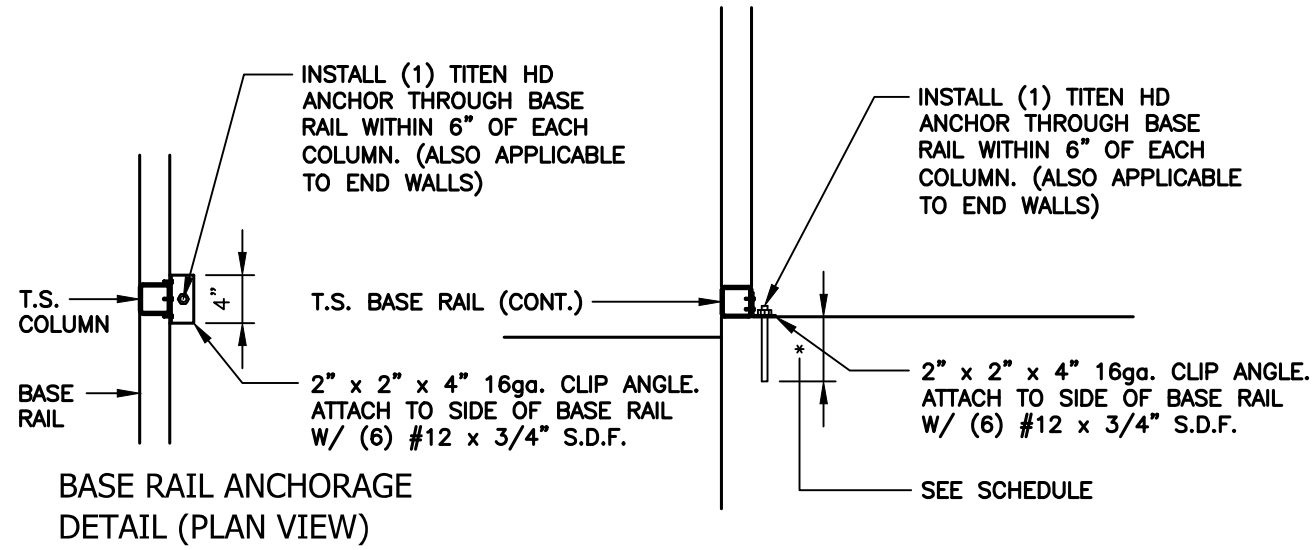
GENERAL NOTE:  
ALL CONCRETE MONOLITHIC SLAB DESIGN BASED ON MINIMUM SOIL BEARING CAPACITY OF 1,500 P.S.F.  
CONCRETE:  
CONCRETE SHALL HAVE A MINIMUM SPECIFIED COMPRESSIVE STRENGTH OF 3,000 P.S.I. AT 28 DAYS.  
COVER OVER REINFORCING STEEL:  
FOR FOUNDATIONS, MINIMUM CONCRETE COVER OVER REINFORCING BARS SHALL BE PER ACI-318: 3" IN FOUNDATIONS WHERE THE CONCRETE IS CAST AGAINST AND PERMANENTLY IN CONTACT WITH THE EARTH OR EXPOSED TO THE EARTH AND WEATHER AND 1-1/2" ELSEWHERE.  
REINFORCING STEEL:  
THE TURNDOWN REINFORCING STEEL SHALL BE ASTM A615 GRADE 60. THE SLAB REINFORCEMENT SHALL BE WELDED WIRE FABRIC MEETING ASTM A185 OR FIBERGLASS FIBER REINFORCEMENT.  
REINFORCEMENT MAY BE BENT IN THE SHOP OR IN THE FIELD PROVIDED:  
1. REINFORCEMENT IS BENT COLD.  
2. THE DIAMETER OF THE BEND, MEASURED ON THE INSIDE OF THE BAR, IS NOT LESS THAN SIX-BAR DIAMETERS.  
3. REINFORCEMENT PARTIALLY EMBEDDED IN CONCRETE SHALL NOT BE FIELD BENT.

**(LEAN-TO) SINGLE COLUMN OPTIONS - NO SIDING LEDGE  
(TITEN HD ANCHORS)**

ANCHORAGE BOLT SCHEDULE	
WIND SPEED	BOLT SIZE
UP TO 115 M.P.H.	1/2" x 4" EMBEDMENT (TITEN HD)
UP TO 125 M.P.H.	1/2" x 4" EMBEDMENT (TITEN HD)
UP TO 135 M.P.H.	5/8" x 5-1/2" EMBEDMENT (TITEN HD)
UP TO 145 M.P.H.	5/8" x 5-1/2" EMBEDMENT (TITEN HD)



SCALE: 3/4" = 1'-0"



SCALE: 3/4" = 1'-0"

**1** (ALTERNATE) BASE RAIL ANCHORAGE DETAIL  
S5B SCALE: 3/4" = 1'-0"

**1A** (ALTERNATE) BASE RAIL ANCHORAGE DETAIL (TITEN HD)  
S5B SCALE: 3/4" = 1'-0"

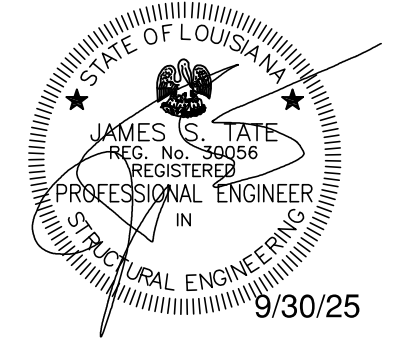
**JCMT**  
ASSOCIATES, PLLC  
PO BOX 27  
Pilot Mountain, NC 28641  
828-310-7160

Roderick Ducre  
33076 Haines Drive  
Slidell LA 70460

Project No.  
0125-0819  
Sheet No.  
S5B

(PARTIALLY) ENCLOSED GABLE END BUILDING  
MAXIMUM >0' TO <30' WIDE x <16' MAXIMUM EAVE HEIGHT (BOX FRAME)  
(UP TO) 145 M.P.H. WIND ZONE - 35/43.5/47 P.S.F. SNOW LOAD(S)

Date:  
09/29/25  
Revisions:



**DOUBLE COLUMN OPTIONS  
(ANCHOR BOLTS)**

ANCHORAGE BOLT SCHEDULE	
WIND SPEED	BOLT SIZE
UP TO 115 M.P.H.	1/2" x 6-1/2" EXPANSION ANCHOR
UP TO 125 M.P.H.	1/2" x 6-1/2" EXPANSION ANCHOR
UP TO 135 M.P.H.	1/2" x 9" EXPANSION ANCHOR
UP TO 145 M.P.H.	1/2" x 9" EXPANSION ANCHOR

GENERAL NOTE:  
ALL CONCRETE MONOLITHIC SLAB DESIGN BASED ON MINIMUM SOIL BEARING CAPACITY OF 1,500 P.S.F.

CONCRETE:  
CONCRETE SHALL HAVE A MINIMUM SPECIFIED COMPRESSIVE STRENGTH OF 3,000 P.S.I. AT 28 DAYS.

COVER OVER REINFORCING STEEL:  
FOR FOUNDATIONS, MINIMUM CONCRETE COVER OVER REINFORCING BARS SHALL BE PER ACI-318: 3" IN FOUNDATIONS WHERE THE CONCRETE IS CAST AGAINST AND PERMANENTLY IN CONTACT WITH THE EARTH OR EXPOSED TO THE EARTH AND WEATHER AND 1-1/2" ELSEWHERE.

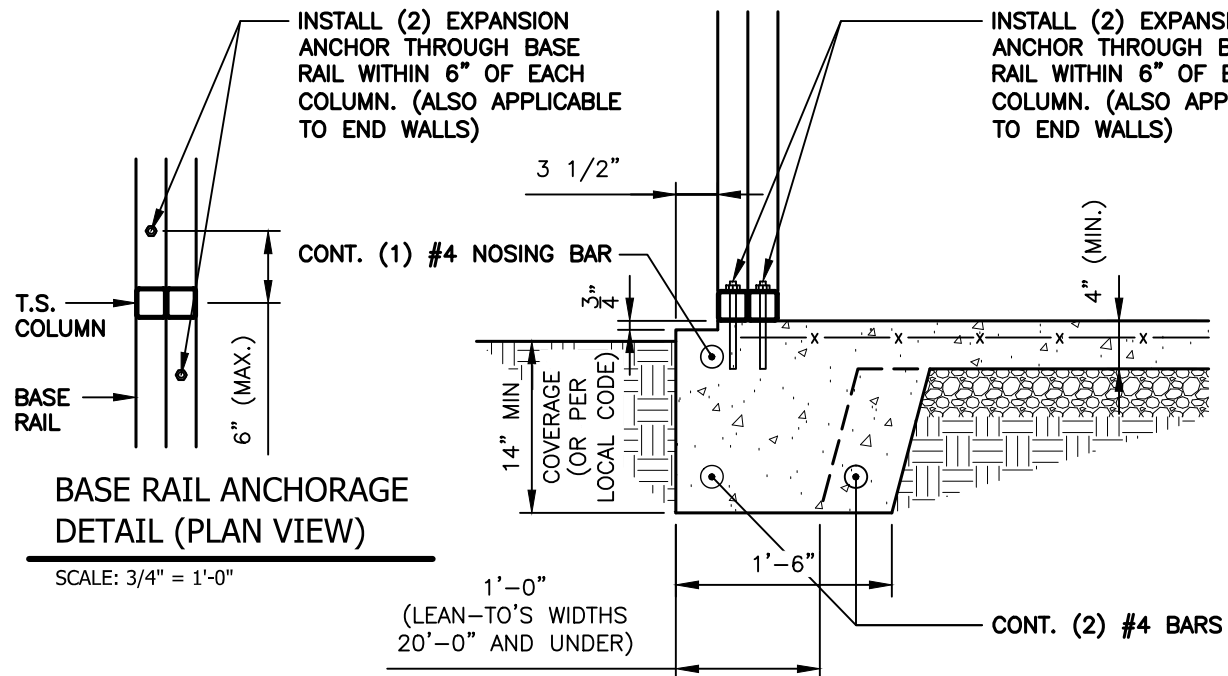
REINFORCING STEEL:  
THE TURNDOWN REINFORCING STEEL SHALL BE ASTM A615 GRADE 60. THE SLAB REINFORCEMENT SHALL BE WELDED WIRE FABRIC MEETING ASTM A185 OR FIBERGLASS FIBER REINFORCEMENT.

REINFORCEMENT MAY BE BENT IN THE SHOP OR IN THE FIELD PROVIDED:

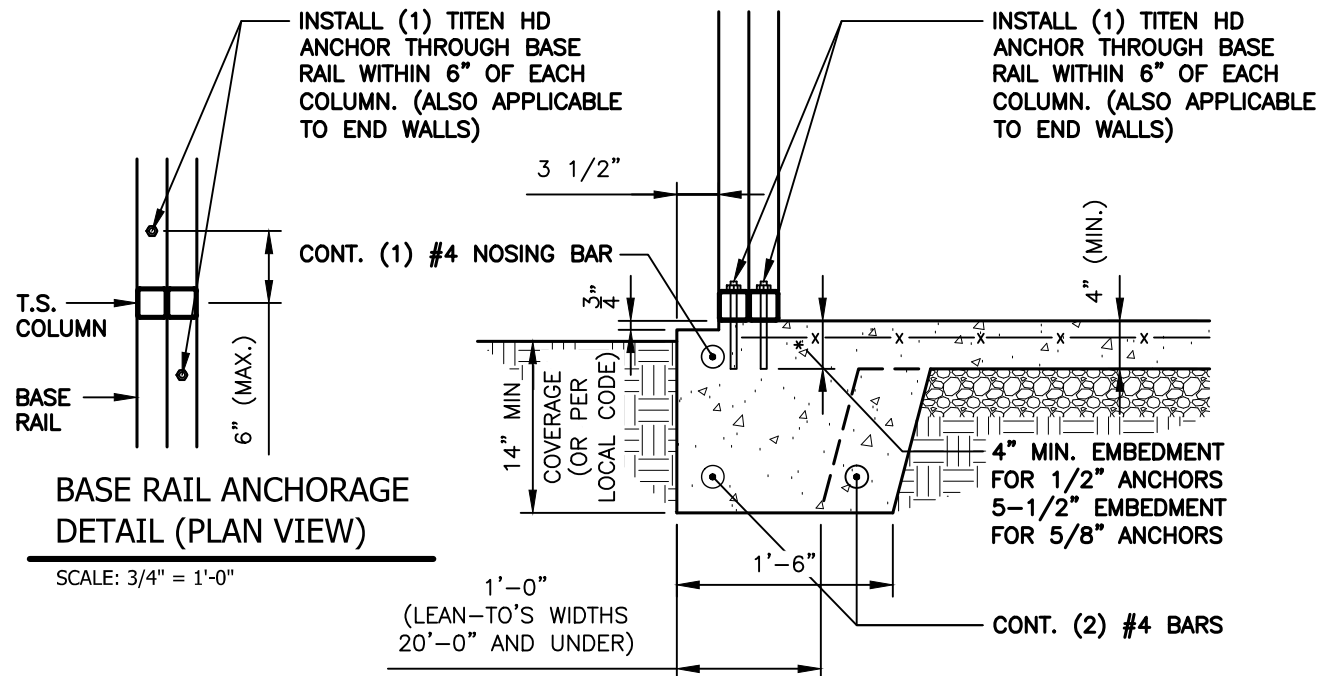
1. REINFORCEMENT IS BENT COLD.
2. THE DIAMETER OF THE BEND, MEASURED ON THE INSIDE OF THE BAR, IS NOT LESS THAN SIX-BAR DIAMETERS.
3. REINFORCEMENT PARTIALLY EMBEDDED IN CONCRETE SHALL NOT BE FIELD BENT.

**DOUBLE COLUMN OPTIONS  
(TITEN HD ANCHORS)**

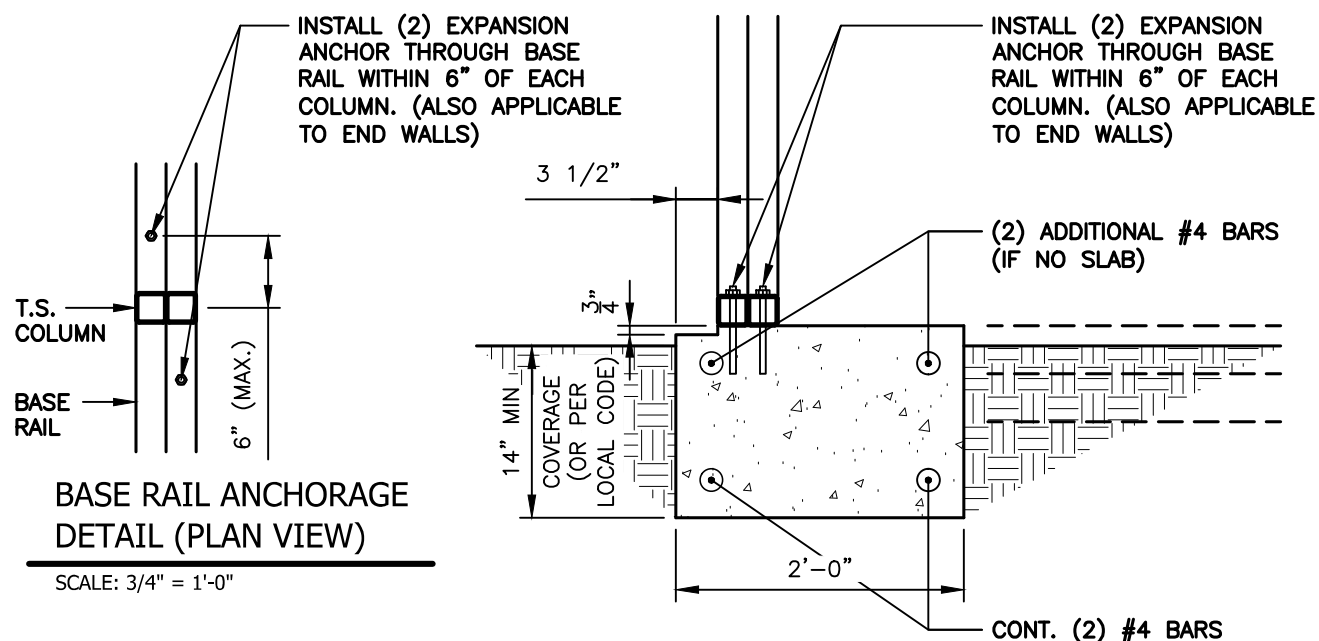
ANCHORAGE BOLT SCHEDULE	
WIND SPEED	BOLT SIZE
UP TO 115 M.P.H.	1/2" x 4" EMBEDMENT (TITEN HD)
UP TO 125 M.P.H.	1/2" x 4" EMBEDMENT (TITEN HD)
UP TO 135 M.P.H.	5/8" x 5-1/2" EMBEDMENT (TITEN HD)
UP TO 145 M.P.H.	5/8" x 5-1/2" EMBEDMENT (TITEN HD)



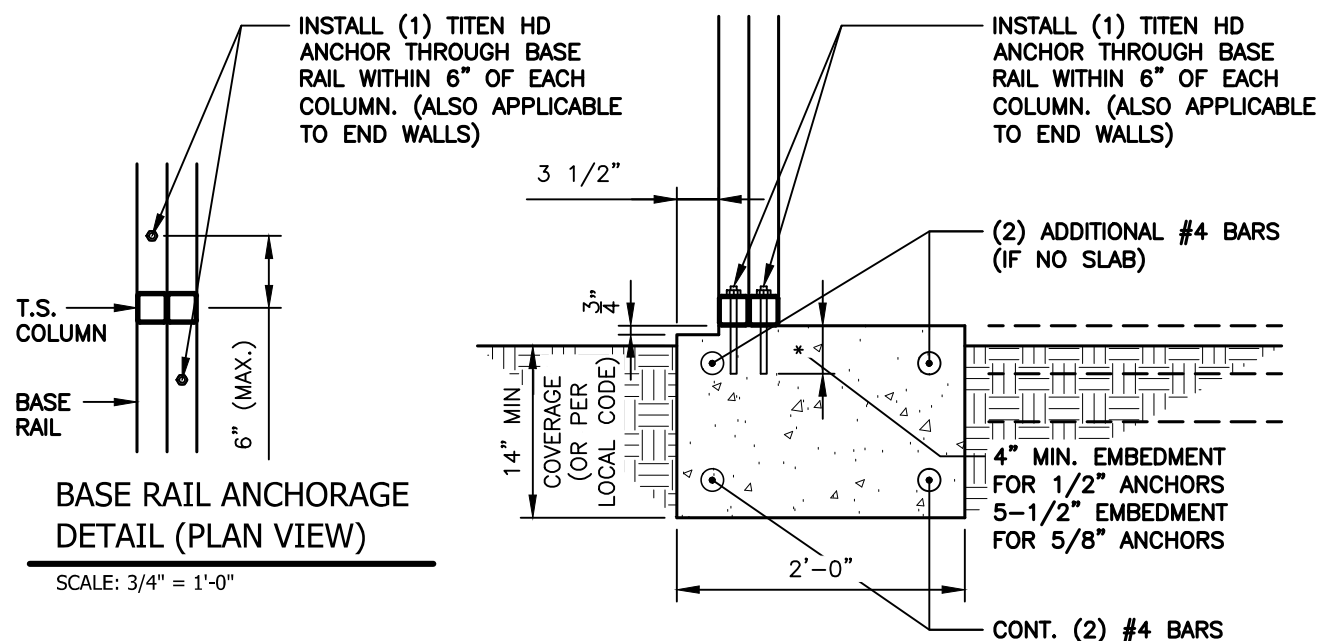
**1** BASE RAIL ANCHORAGE DETAIL  
S5C SCALE: 3/4" = 1'-0"



**1B** BASE RAIL ANCHORAGE DETAIL (TITEN HD)  
S5C SCALE: 3/4" = 1'-0"



**1A** BASE RAIL ANCHORAGE DETAIL (NO SLAB)  
S5C SCALE: 3/4" = 1'-0"



**1C** BASE RAIL ANCHORAGE DETAIL (NO SLAB - TITEN HD)  
S5C SCALE: 3/4" = 1'-0"

**JCMT**  
ASSOCIATES, PLLC  
PO BOX 27  
Pilot Mountain, NC 28641  
828-310-7160

Roderick Ducre  
33076 Haines Drive  
Slidell LA 70460

Project No.  
0125-0819

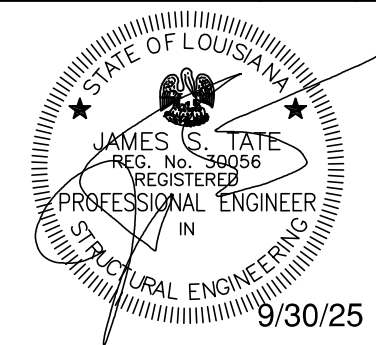
Sheet No.  
S5C

(PARTIALLY) ENCLOSED GABLE END BUILDING

MAXIMUM >0' TO <30' WIDE x <16' MAXIMUM EAVE HEIGHT (BOX FRAME)  
(UP TO) 145 M.P.H. WIND ZONE - 35/43.5/47 P.S.F. SNOW LOAD(S)

Date:  
09/29/25

Revisions:



DOUBLE COLUMN OPTIONS - NO SIDING LEDGE

(ANCHOR BOLTS)

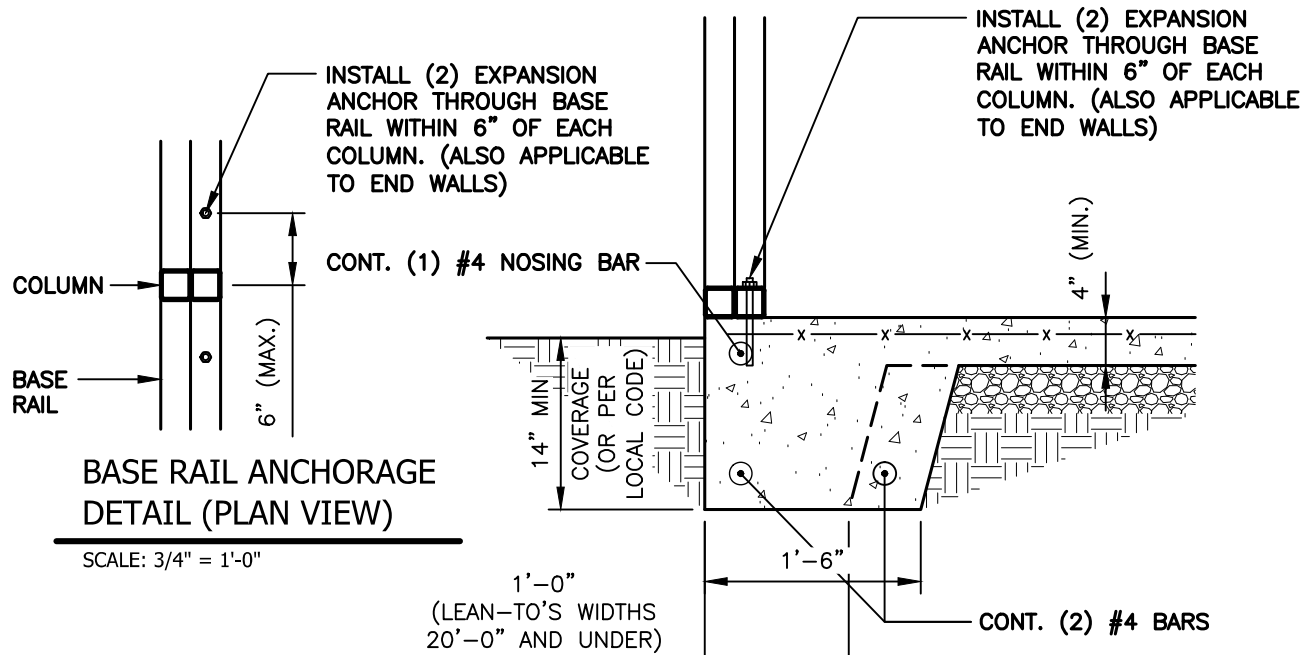
ANCHORAGE BOLT SCHEDULE	
WIND SPEED	BOLT SIZE
UP TO 115 M.P.H.	1/2" x 6-1/2" EXPANSION ANCHOR
UP TO 125 M.P.H.	1/2" x 6-1/2" EXPANSION ANCHOR
UP TO 135 M.P.H.	1/2" x 9" EXPANSION ANCHOR
UP TO 145 M.P.H.	1/2" x 9" EXPANSION ANCHOR

GENERAL NOTE:  
 ALL CONCRETE MONOLITHIC SLAB DESIGN BASED ON MINIMUM SOIL BEARING CAPACITY OF 1,500 P.S.F.  
 CONCRETE:  
 CONCRETE SHALL HAVE A MINIMUM SPECIFIED COMPRESSIVE STRENGTH OF 3,000 P.S.I. AT 28 DAYS.  
 COVER OVER REINFORCING STEEL:  
 FOR FOUNDATIONS, MINIMUM CONCRETE COVER OVER REINFORCING BARS SHALL BE PER ACI-318: 3" IN FOUNDATIONS WHERE THE CONCRETE IS CAST AGAINST AND PERMANENTLY IN CONTACT WITH THE EARTH OR EXPOSED TO THE EARTH AND WEATHER AND 1-1/2" ELSEWHERE.  
 REINFORCING STEEL:  
 THE TURNDOWN REINFORCING STEEL SHALL BE ASTM A615 GRADE 60. THE SLAB REINFORCEMENT SHALL BE WELDED WIRE FABRIC MEETING ASTM A185 OR FIBERGLASS FIBER REINFORCEMENT.  
 REINFORCEMENT MAY BE BENT IN THE SHOP OR IN THE FIELD PROVIDED:  
 1. REINFORCEMENT IS BENT COLD.  
 2. THE DIAMETER OF THE BEND, MEASURED ON THE INSIDE OF THE BAR, IS NOT LESS THAN SIX-BAR DIAMETERS.  
 3. REINFORCEMENT PARTIALLY EMBEDDED IN CONCRETE SHALL NOT BE FIELD BENT.

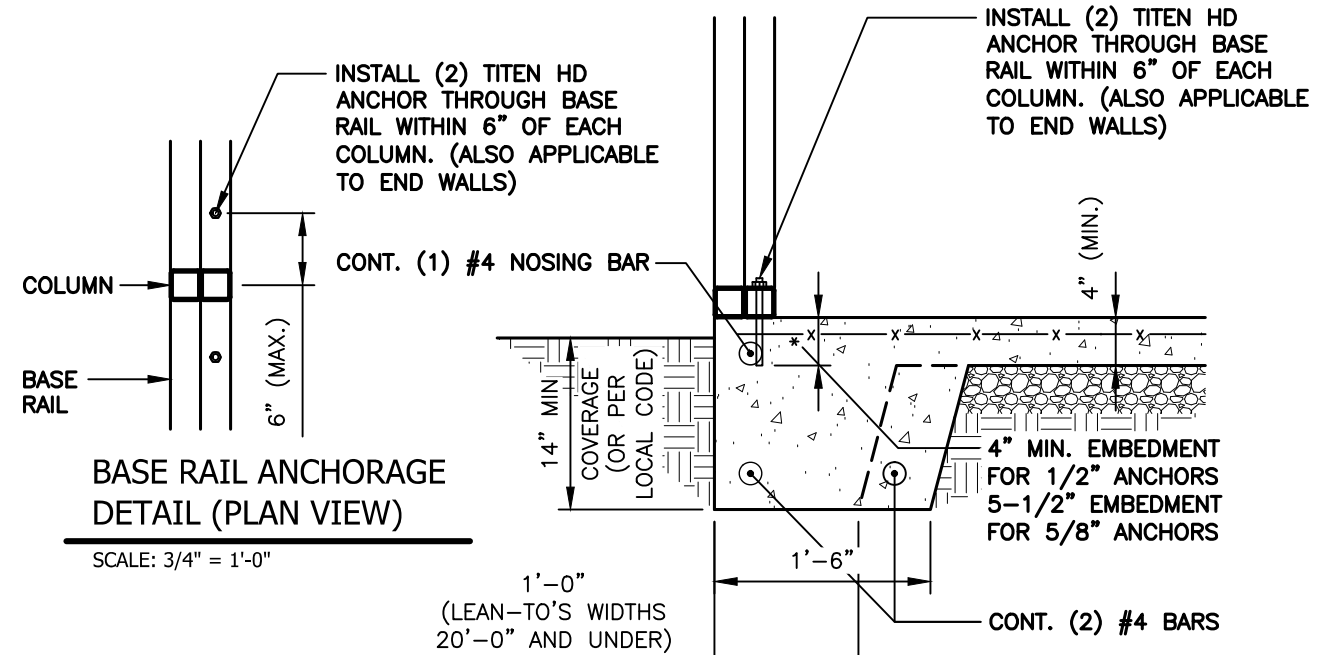
DOUBLE COLUMN OPTIONS - NO SIDING LEDGE

(TITEN HD ANCHORS)

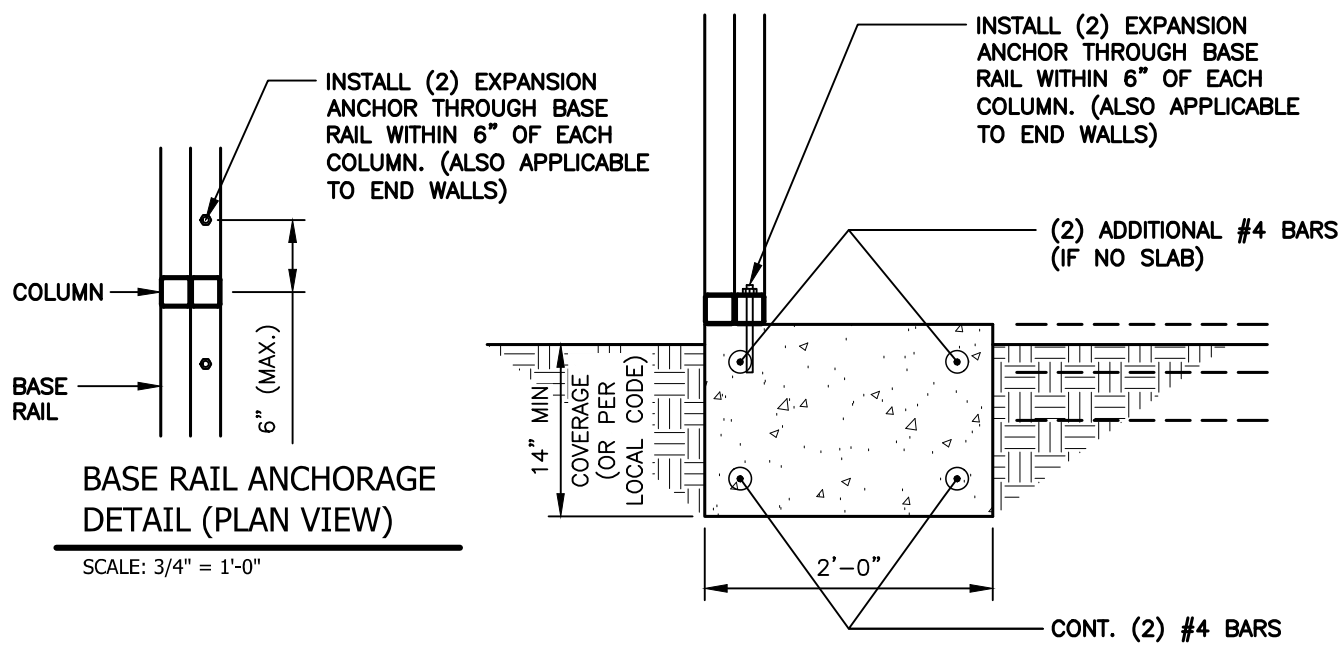
ANCHORAGE BOLT SCHEDULE	
WIND SPEED	BOLT SIZE
UP TO 115 M.P.H.	1/2" x 4" EMBEDMENT (TITEN HD)
UP TO 125 M.P.H.	1/2" x 4" EMBEDMENT (TITEN HD)
UP TO 135 M.P.H.	5/8" x 5-1/2" EMBEDMENT (TITEN HD)
UP TO 145 M.P.H.	5/8" x 5-1/2" EMBEDMENT (TITEN HD)



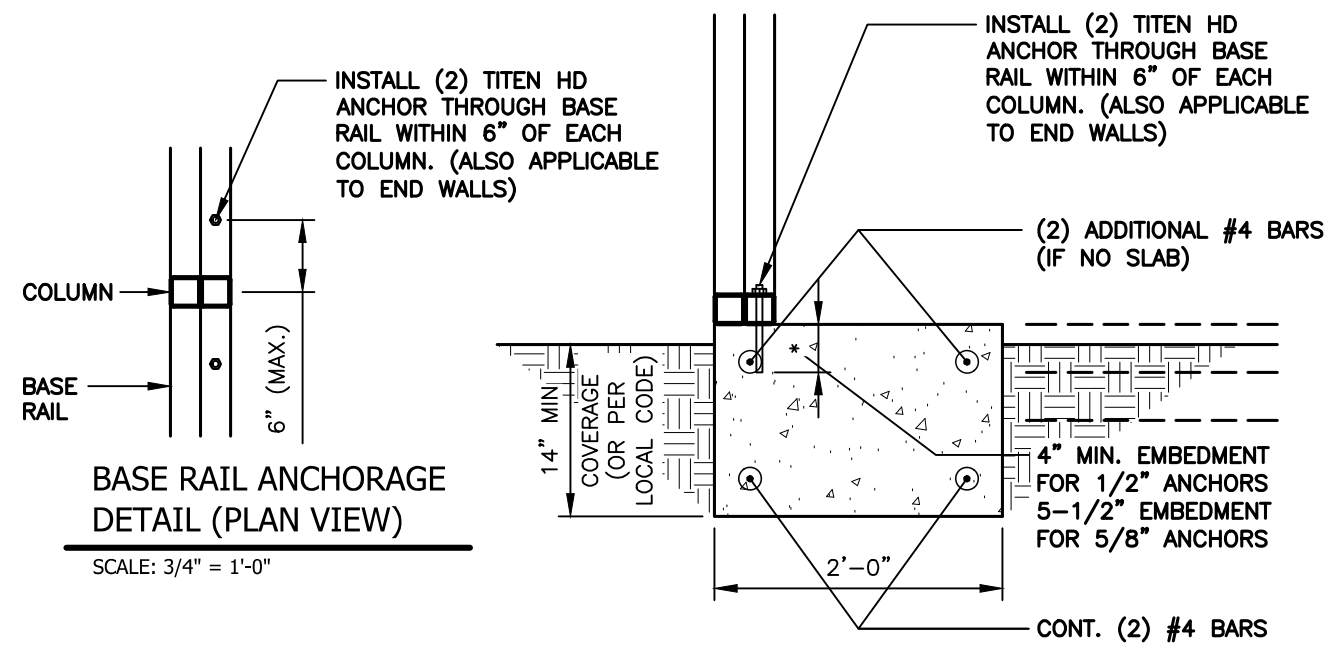
1 BASE RAIL ANCHORAGE DETAIL  
 S5D SCALE: 3/4" = 1'-0"



1B BASE RAIL ANCHORAGE DETAIL  
 S5D SCALE: 3/4" = 1'-0"



1A BASE RAIL ANCHORAGE DETAIL (NO SLAB)  
 S5D SCALE: 3/4" = 1'-0"



1C BASE RAIL ANCHORAGE DETAIL (NO SLAB)  
 S5D SCALE: 3/4" = 1'-0"

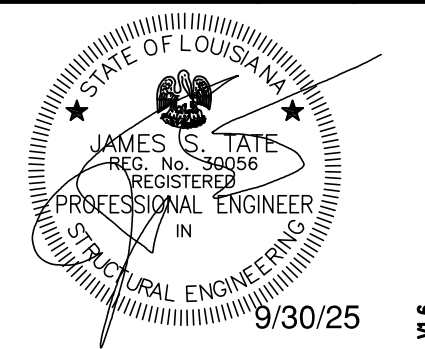
**JCMT**  
 ASSOCIATES, PLLC  
 PO BOX 27  
 Pilot Mountain, NC 28641  
 828-310-7160

Roderick Ducre  
 33076 Haines Drive  
 Slidell LA 70460

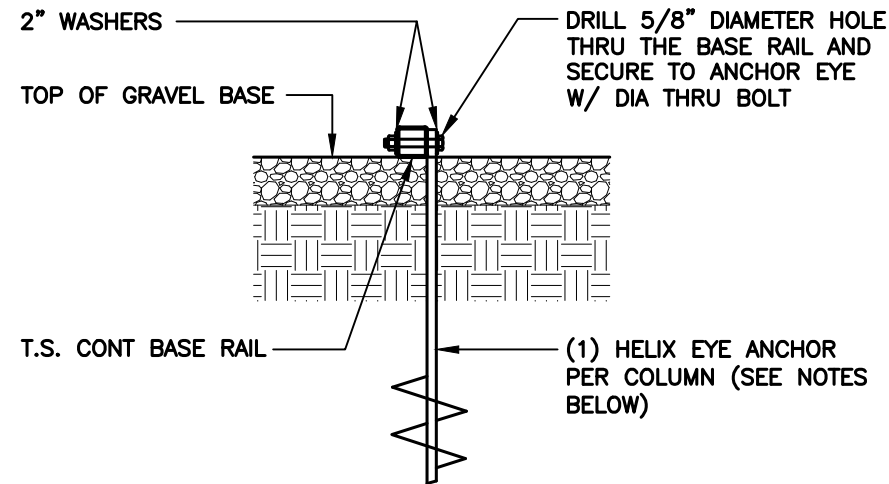
Project No.  
 0125-0819  
 Sheet No.  
 S5D

(PARTIALLY) ENCLOSED GABLE END BUILDING  
 MAXIMUM >0' TO <30' WIDE x <16' MAXIMUM EAVE HEIGHT (BOX FRAME)  
 (UP TO) 145 M.P.H. WIND ZONE - 35/43.5/47 P.S.F. SNOW LOAD(S)

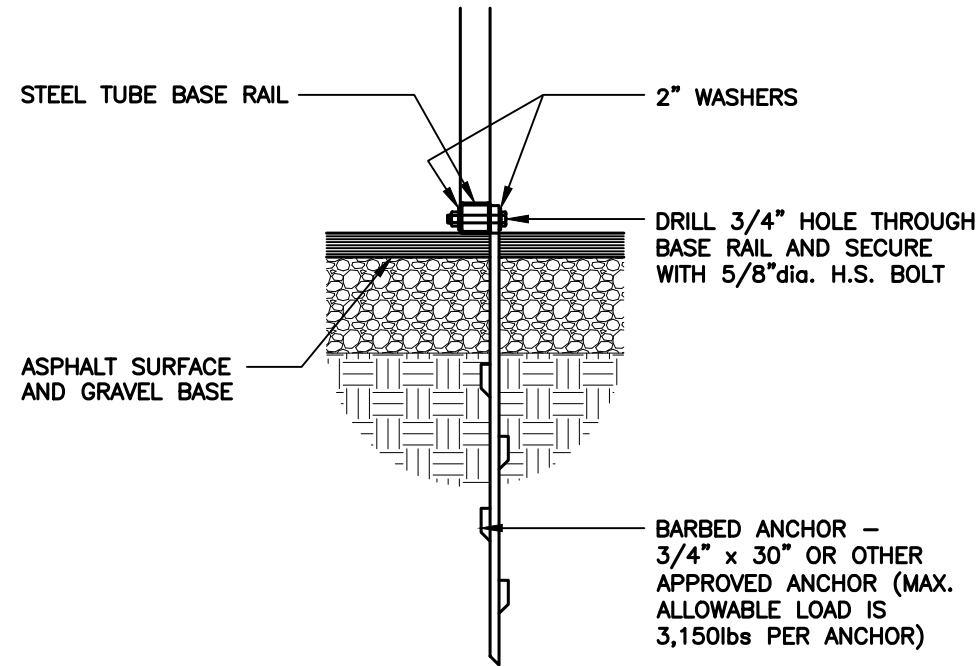
Date:  
 09/29/25  
 Revisions:



ALTERNATE ANCHORAGE OPTIONS



1 BASE RAIL ANCHORAGE DETAIL  
S6 SCALE: 3/4" = 1'-0"



2 ASPHALT / BASE RAIL ANCHORAGE DETAIL  
S6 SCALE: 3/4" = 1'-0"

HELIX EMBEDMENT INFORMATION:

FOR VERY DENSE OR CEMETED SANDS, COARSE GRAVEL, COBBLES, CALICHE, PRELOADED SILTS AND CLAYS, USE MIN. (2) 4" HELICES WITH MINIMUM 30" EMBEDMENT OR SINGLE 6" HELIX WITH 50" EMBEDMENT - ONE EACH END BASE RAIL AND 25'oc MAX. WITH #4 REBAR AT 5'-0"oc BETWEEN.

FOR CORAL, USE MIN (2) 4" HELICES WITH MINIMUM 30" EMBEDMENT OR SINGLE 6" HELIX WITH 50" EMBEDMENT - ONE EACH END BASE RAIL AND 25'oc MAX. WITH #4 REBAR AT 5'-0"oc BETWEEN.

FOR MED DENSE COARSE SANDS, SANDY GRAVEL, VERY STIFF SILTS, AND CLAYS, USE MIN (2) 4" HELICES WITH MINIMUM 30" EMBEDMENT OR SINGLE 6" HELIX WITH 50" EMBEDMENT - ONE EACH END BASE RAIL AND 25'oc MAX. WITH #4 REBAR AT 5'-0"oc BETWEEN.

FOR LOOSE TO MEDIUM DENSE SANDS, FIRM TO STIFF CLAYS AND SILTS, USE MIN (2) 6" HELICES WITH MINIMUM 50" EMBEDMENT - ONE EACH END BASE RAIL AND 25'oc MAX. WITH #4 REBAR AT 5'-0"oc BETWEEN.

FOR VERY LOOSE TO MEDIUM DENSE SANDS, FIRM TO STIFFER CLAYS AND SILTS AND ALLUVIAL FILL, USE MIN (2) 8" HELICES WITH MINIMUM 60" EMBEDMENT - ONE EACH END BASE RAIL AND 25'oc MAX. WITH #4 REBAR AT 5'-0"oc BETWEEN.

BARBED ANCHOR EMBEDMENT INFORMATION:

(1) ASPHALT ANCHOR WITHIN 6" OF EACH COLLUMN.

NOTE:

IN ALL CASES, IF FROST DEPTH EXCEEDS STATED DEPTH, ANCHOR SHOULD EXTEND A MIN. OF 12" BELOW FROST LINE.

NOTE:

IN ALL CASES, IF FROST DEPTH EXCEEDS STATED DEPTH, ANCHOR SHOULD EXTEND A MIN. OF 12" BELOW FROST LINE.

**JCMT**  
ASSOCIATES, PLLC  
PO BOX 27  
Pilot Mountain, NC 28641  
828-310-7160

Roderick Ducre  
33076 Haines Drive  
Slidell LA 70460

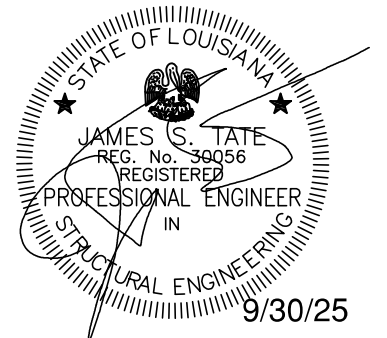
(PARTIALLY) ENCLOSED GABLE END BUILDING  
MAXIMUM >0' TO <30' WIDE x <16' MAXIMUM EAVE HEIGHT (BOX FRAME)  
(UP TO) 145 M.P.H. WIND ZONE - 35/43.5/47 P.S.F. SNOW LOAD(S)

Date:  
09/29/25

Revisions:  
-

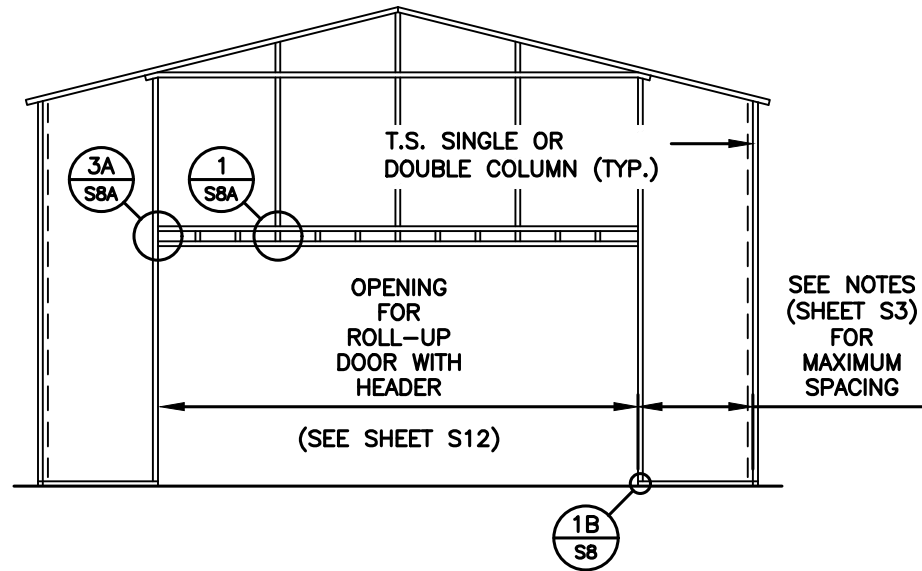
Project No.  
0125-0819

Sheet No.  
S6

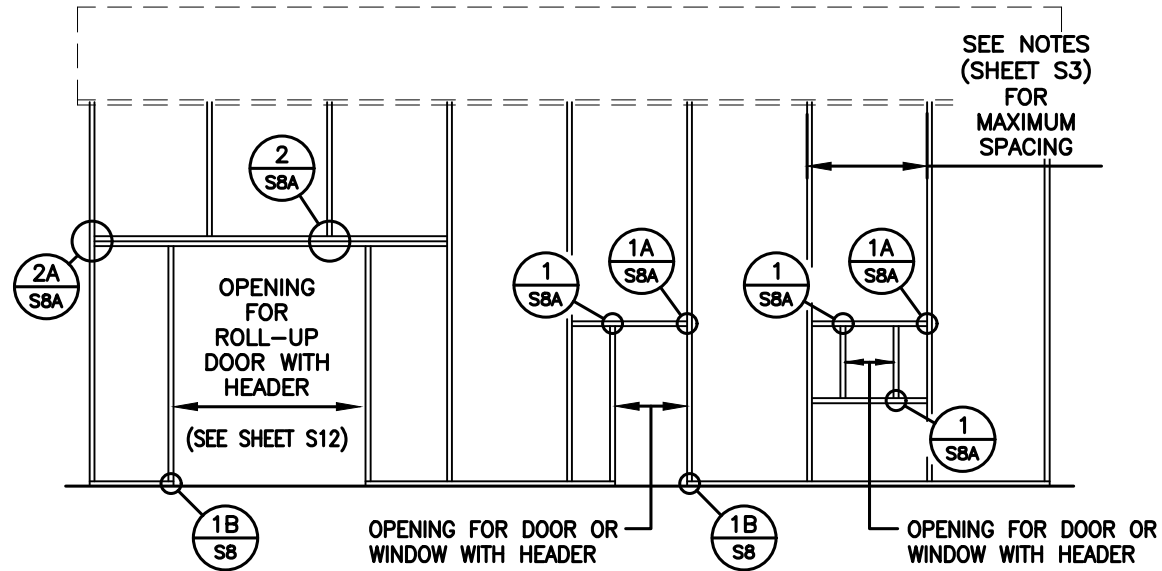


TYPICAL SIDE / END WALL OPENING FRAMING SECTIONS

NOTE:  
ROLL UP DOORS SHALL HAVE ONE JAMB  
EACH SIDE + ONE FRAME COLUMN BETWEEN  
OR SITE SPECIFIC SHALL BE REQ'D.

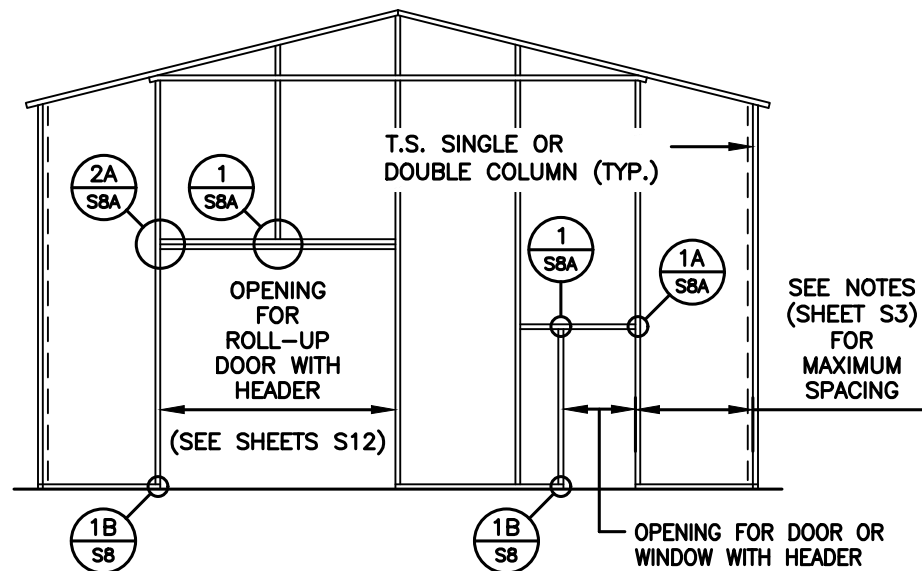


TYPICAL END WALL FRAMING SECTION

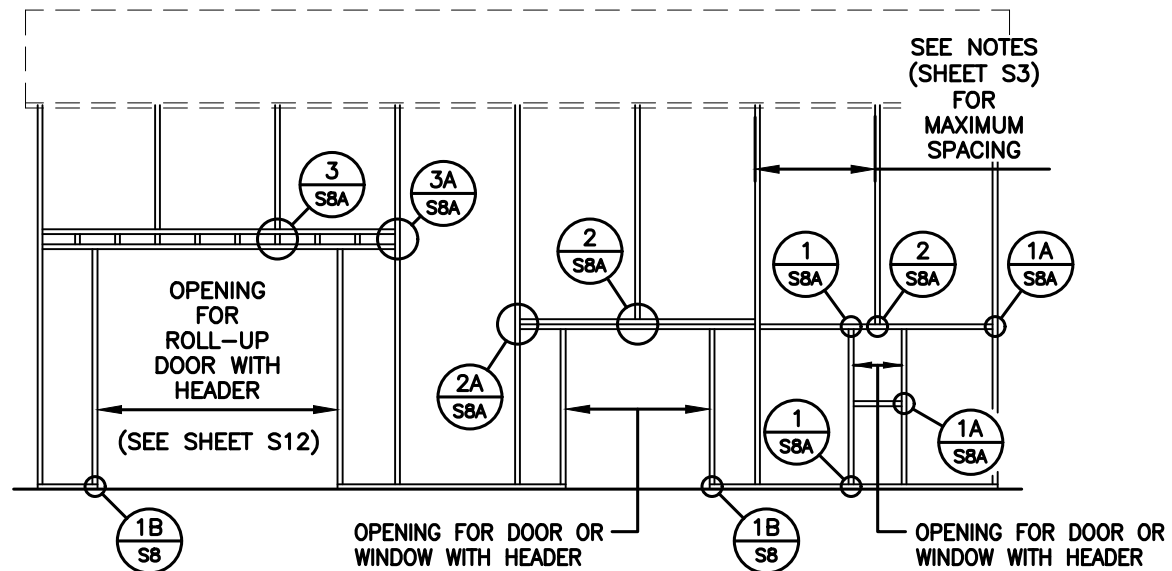


TYPICAL SIDE WALL OPENING FRAMING SECTION

NOTE:  
ROLL UP DOORS SHALL HAVE ONE JAMB  
EACH SIDE + ONE FRAME COLUMN BETWEEN  
OR SITE SPECIFIC SHALL BE REQ'D.



TYPICAL END WALL FRAMING SECTION



TYPICAL SIDE WALL OPENING FRAMING SECTION

**JCMT**  
ASSOCIATES, PLLC  
PO BOX 27  
Pilot Mountain, NC 28641  
828-310-7160

Roderick Ducre  
33076 Haines Drive  
Slidell LA 70460

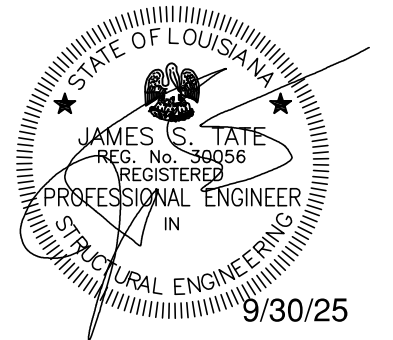
(PARTIALLY) ENCLOSED GABLE END BUILDING  
MAXIMUM >0' TO <30' WIDE x <16' MAXIMUM EAVE HEIGHT (BOX FRAME)  
(UP TO) 14.5 M.P.H. WIND ZONE - 35/43.5/47 P.S.F. SNOW LOAD(S)

Project No.  
0125-0819

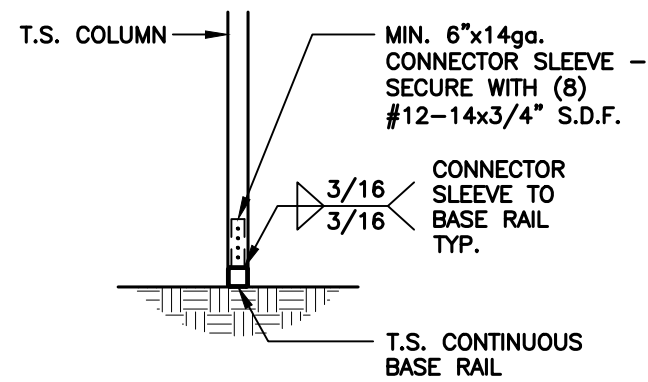
Sheet No.  
S7

Date:  
09/29/25

Revisions:  
-

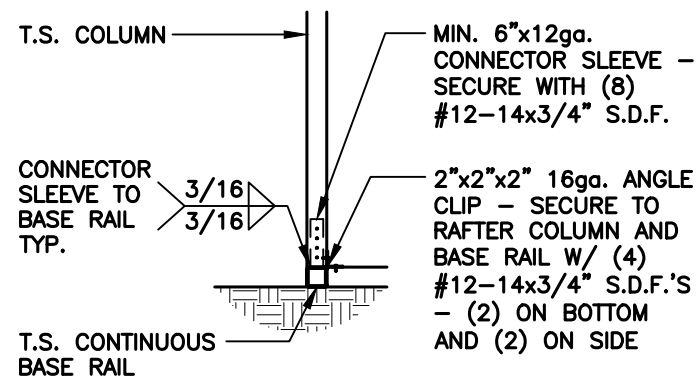


**BASE RAIL CONNECTION DETAILS**



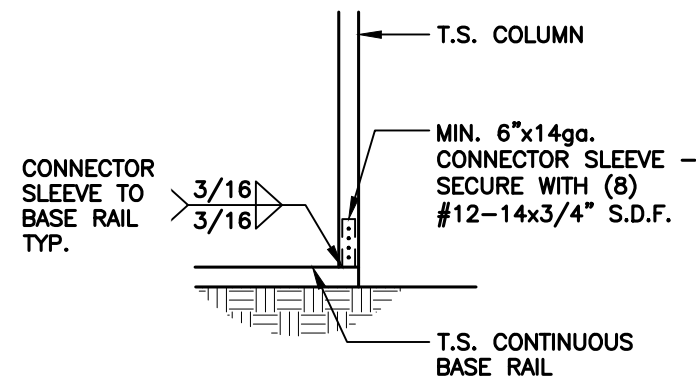
**1**  
COLUMN / BASE RAIL CONNECTION DETAIL

S8 SCALE: 1/2" = 1'-0"



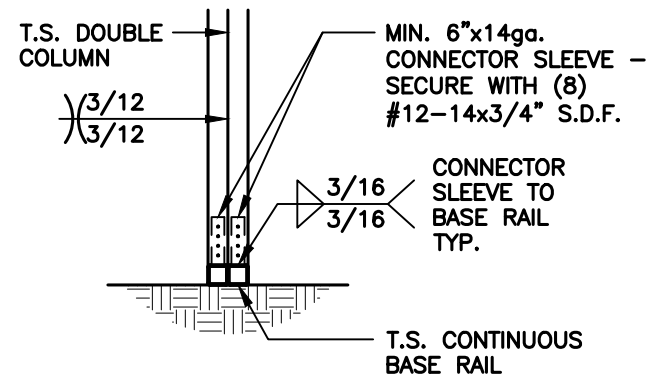
**1A**  
END COLUMN / BASE RAIL CONNECTION DETAIL

S8 SCALE: 1/2" = 1'-0"



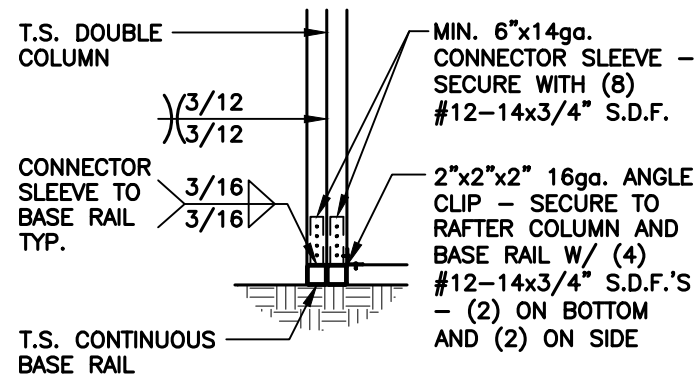
**1B**  
COLUMN / BASE RAIL CONNECTION DETAIL

S8 SCALE: 1/2" = 1'-0"



**2**  
COLUMN / BASE RAIL CONNECTION DETAIL

S8 SCALE: 1/2" = 1'-0"



**2A**  
END COLUMN / BASE RAIL CONNECTION DETAIL

S8 SCALE: 1/2" = 1'-0"

**JCMT**  
ASSOCIATES, PLLC  
PO BOX 27  
Pilot Mountain, NC 28641  
828-310-7160

Roderick Ducre  
33076 Haines Drive  
Slidell LA 70460

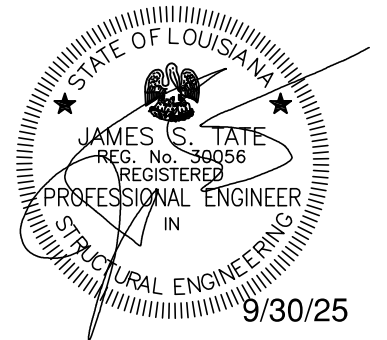
(PARTIALLY) ENCLOSED GABLE END BUILDING  
MAXIMUM >0' TO <30' WIDE x <16' MAXIMUM EAVE HEIGHT (BOX FRAME)  
(UP TO) 14.5 M.P.H. WIND ZONE - 35/43.5/47 P.S.F. SNOW LOAD(S)

Project No.  
0125-0819

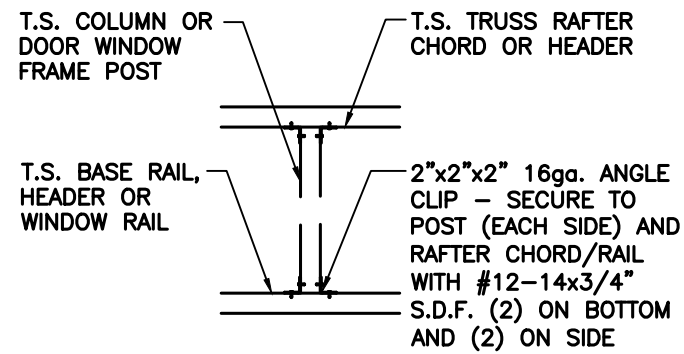
Sheet No.  
S8

Date:  
09/29/25

Revisions:  
-

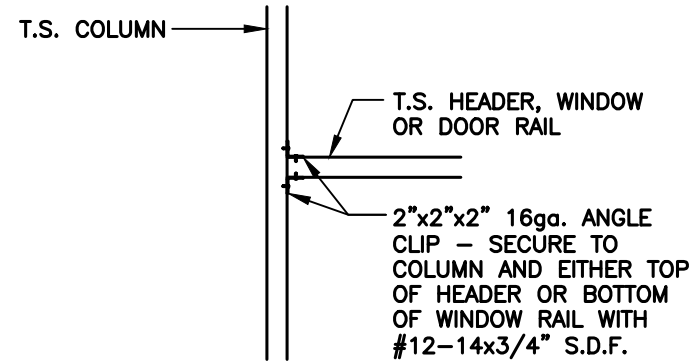


**CONNECTION DETAILS**



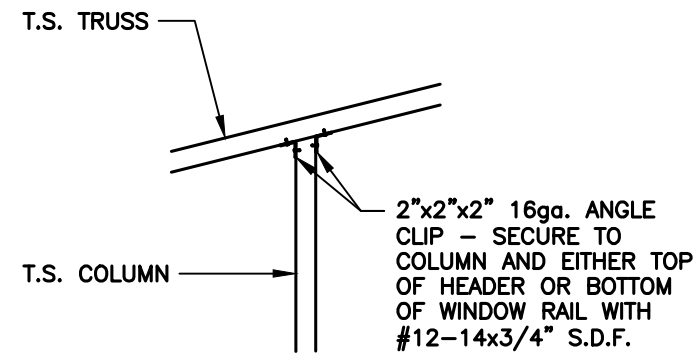
**1**  
SBA POST TO TRUSS / HEADER CONNECTION DETAIL

SCALE: 1/2" = 1'-0"



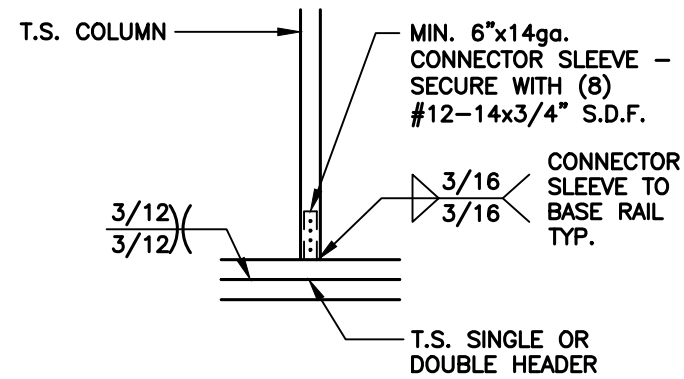
**1A**  
SBA HEADER RAIL TO POST CONNECTION DETAIL

SCALE: 1/2" = 1'-0"



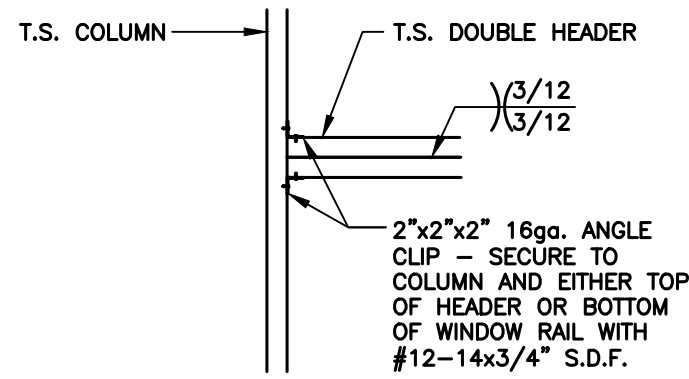
**1B**  
SBA POST TO TRUSS CONNECTION DETAIL

SCALE: 1/2" = 1'-0"



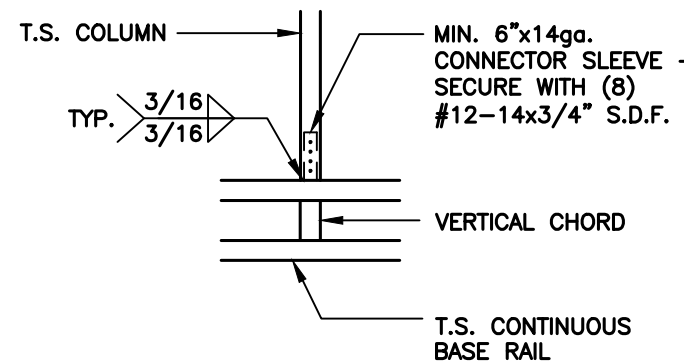
**2**  
SBA POST TO DOUBLE HEADER CONNECTION DETAIL

SCALE: 1/2" = 1'-0"



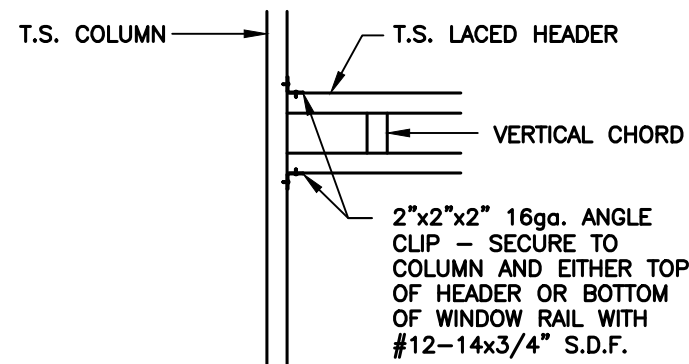
**2A**  
SBA DOUBLE HEADER TO POST CONNECTION DETAIL

SCALE: 1/2" = 1'-0"



**3**  
SBA POST TO LACED HEADER CONNECTION DETAIL

SCALE: 1/2" = 1'-0"



**3A**  
SBA LACED HEADER TO POST CONNECTION DETAIL

SCALE: 1/2" = 1'-0"

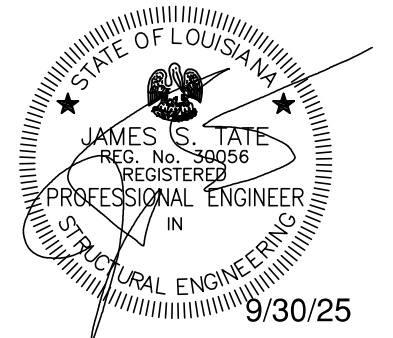
**JCMT**  
ASSOCIATES, PLLC  
PO BOX 27  
Pilot Mountain, NC 28641  
828-310-7160

Roderick Ducre  
33076 Haines Drive  
Slidell LA 70460

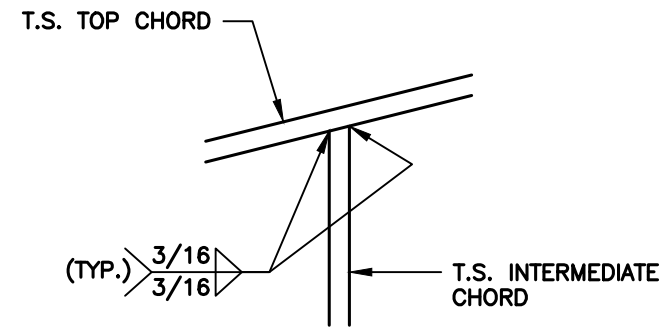
(PARTIALLY) ENCLOSED GABLE END BUILDING  
MAXIMUM >0' TO <30' WIDE x <16' MAXIMUM EAVE HEIGHT (BOX FRAME)  
(UP TO) 14.5 M.P.H. WIND ZONE - 35/43.5/47 P.S.F. SNOW LOAD(S)

Date:  
09/29/25

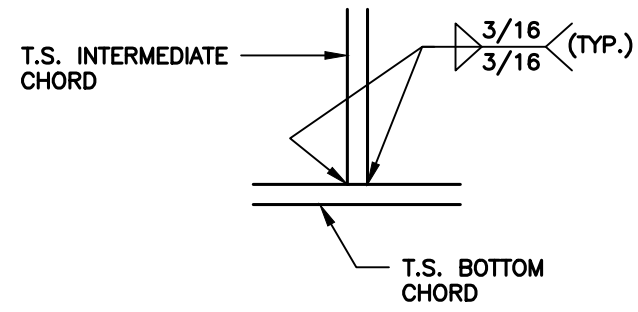
Revisions:  
-



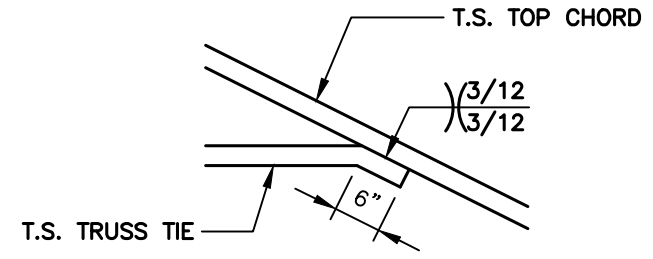
**TRUSS CONNECTION DETAILS**



**1**  
**S8B** INTERMEDIATE CHORD / TOP CHORD CONNECTION DETAIL  
 SCALE: 1/2" = 1'-0"



**2**  
**S8B** INTERMEDIATE CHORD / BOTTOM CHORD CONNECTION DETAIL  
 SCALE: 1/2" = 1'-0"



**3**  
**S8B** TRUSS TIE / TOP CHORD CONNECTION DETAIL  
 SCALE: 1/2" = 1'-0"

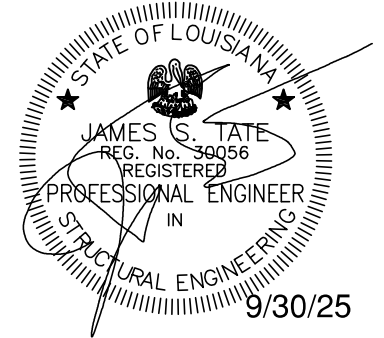
**JCMT**  
 ASSOCIATES, PLLC  
 PO BOX 27  
 Pilot Mountain, NC 28641  
 828-310-7160

Roderick Ducre  
 33076 Haines Drive  
 Slidell LA 70460

Project No.  
 0125-0819  
 Sheet No.  
 S8B

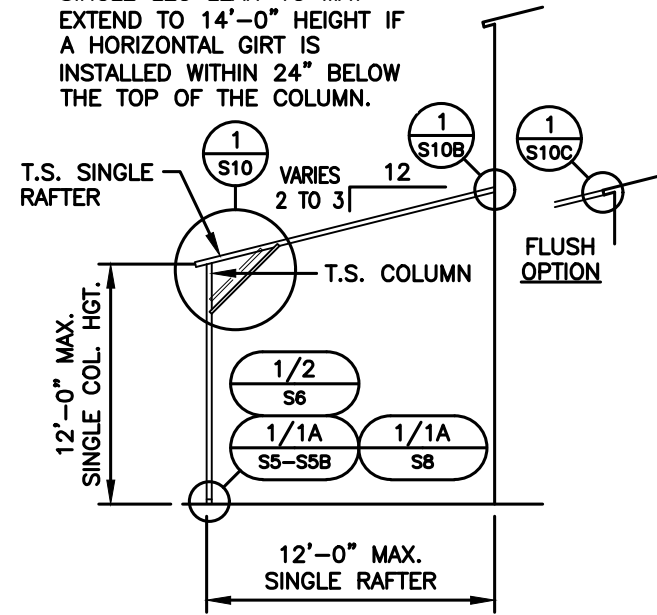
(PARTIALLY) ENCLOSED GABLE END BUILDING  
 MAXIMUM >0' TO <30' WIDE x <16' MAXIMUM EAVE HEIGHT (BOX FRAME)  
 (UP TO) 14.5 M.P.H. WIND ZONE - 35/43.5/47 P.S.F. SNOW LOAD(S)

Date:  
 09/29/25  
 Revisions:  
 -

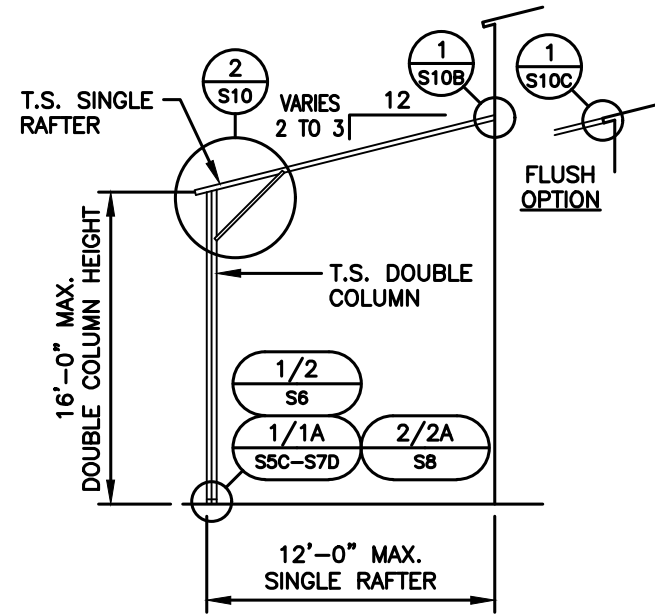


LEAN-TO FRAMING OPTIONS

NOTE:  
SINGLE LEG LEAN-TO MAY  
EXTEND TO 14'-0" HEIGHT IF  
A HORIZONTAL GIRT IS  
INSTALLED WITHIN 24" BELOW  
THE TOP OF THE COLUMN.

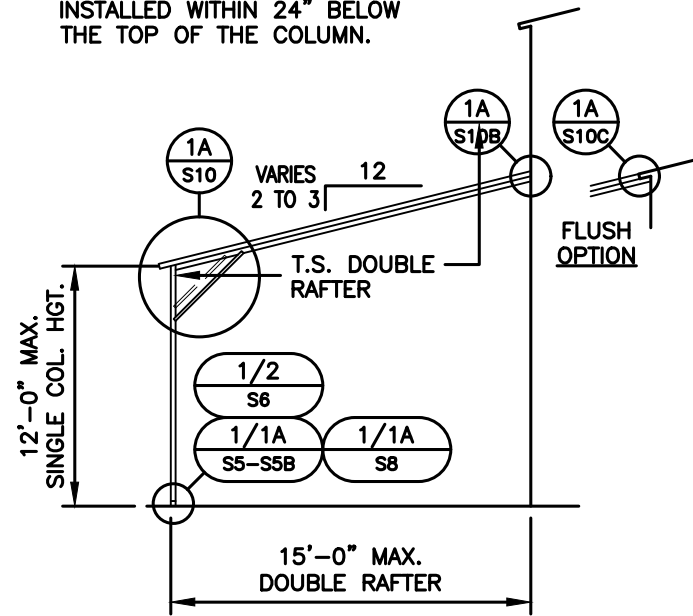


SINGLE RAFTER / SINGLE COLUMN  
LEAN-TO FRAMING SECTION

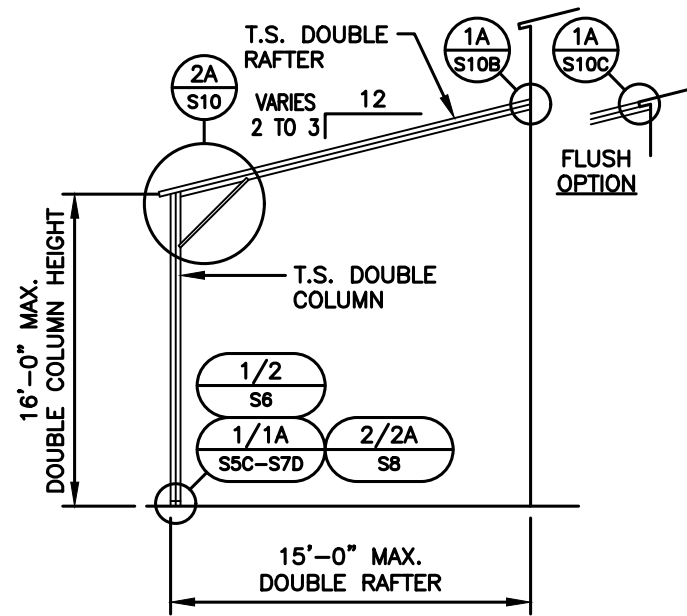


SINGLE RAFTER / DOUBLE COLUMN  
LEAN-TO FRAMING SECTION

NOTE:  
SINGLE LEG LEAN-TO MAY  
EXTEND TO 14'-0" HEIGHT IF  
A HORIZONTAL GIRT IS  
INSTALLED WITHIN 24" BELOW  
THE TOP OF THE COLUMN.



DOUBLE RAFTER / SINGLE COLUMN  
LEAN-TO FRAMING SECTION



DOUBLE RAFTER / DOUBLE COLUMN  
LEAN-TO FRAMING SECTION

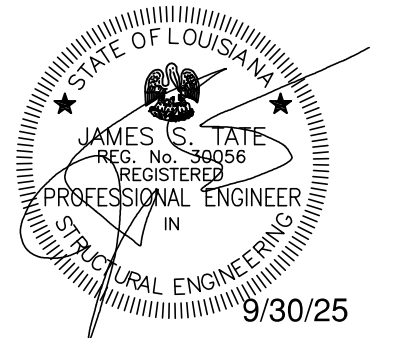
**JCMT**  
ASSOCIATES, PLLC  
PO BOX 27  
Pilot Mountain, NC 28641  
828-310-7160

Roderick Ducre  
33076 Haines Drive  
Slidell LA 70460

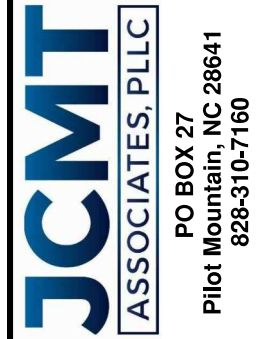
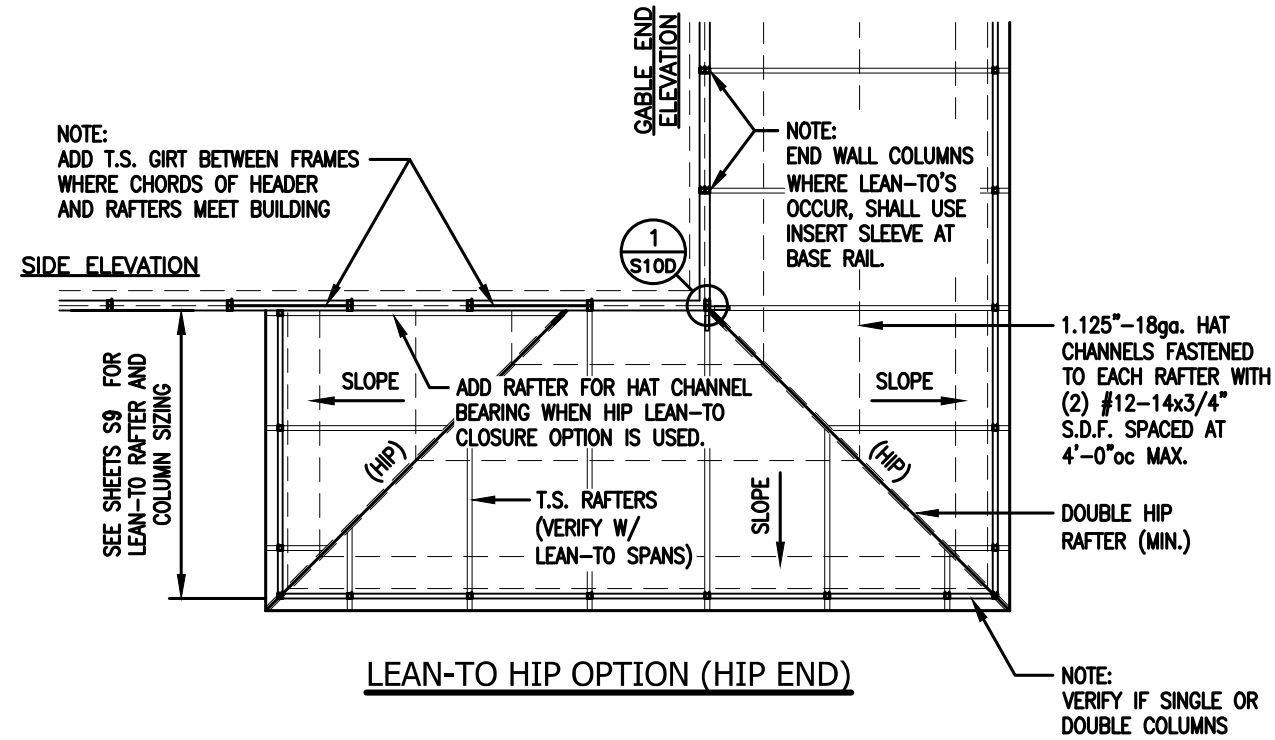
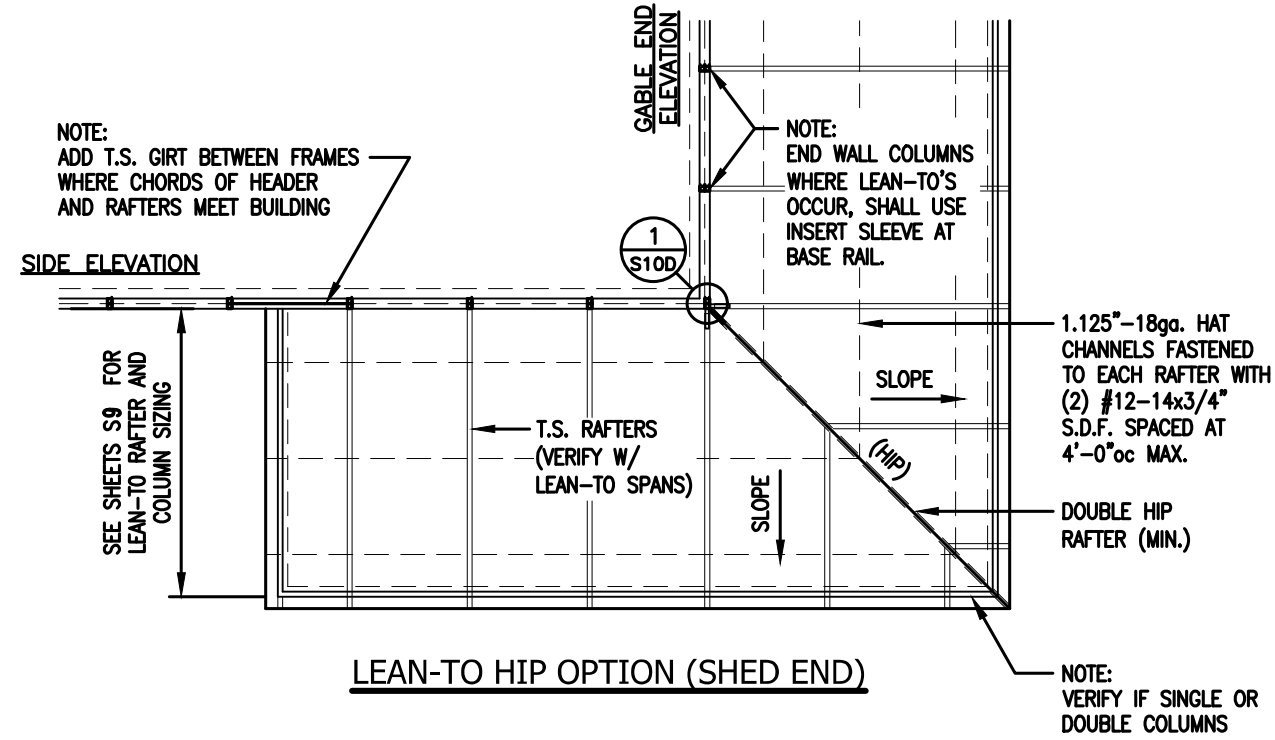
(PARTIALLY) ENCLOSED GABLE END BUILDING  
MAXIMUM >0' TO <30' WIDE x <16' MAXIMUM EAVE HEIGHT (BOX FRAME)  
(UP TO) 14.5 M.P.H. WIND ZONE - 35/43.5/47 P.S.F. SNOW LOAD(S)

Date: 09/29/25  
Revisions:

Project No. 0125-0819  
Sheet No. S9



**LEAN-TO HIP FRAMING OPTIONS**

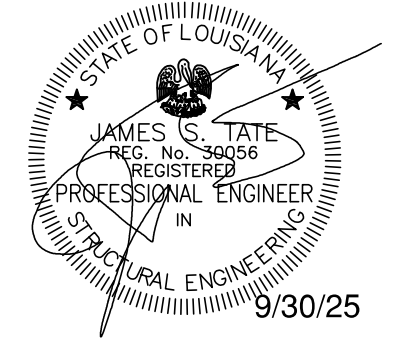


Roderick Ducre  
33076 Haines Drive  
Slidell LA 70460

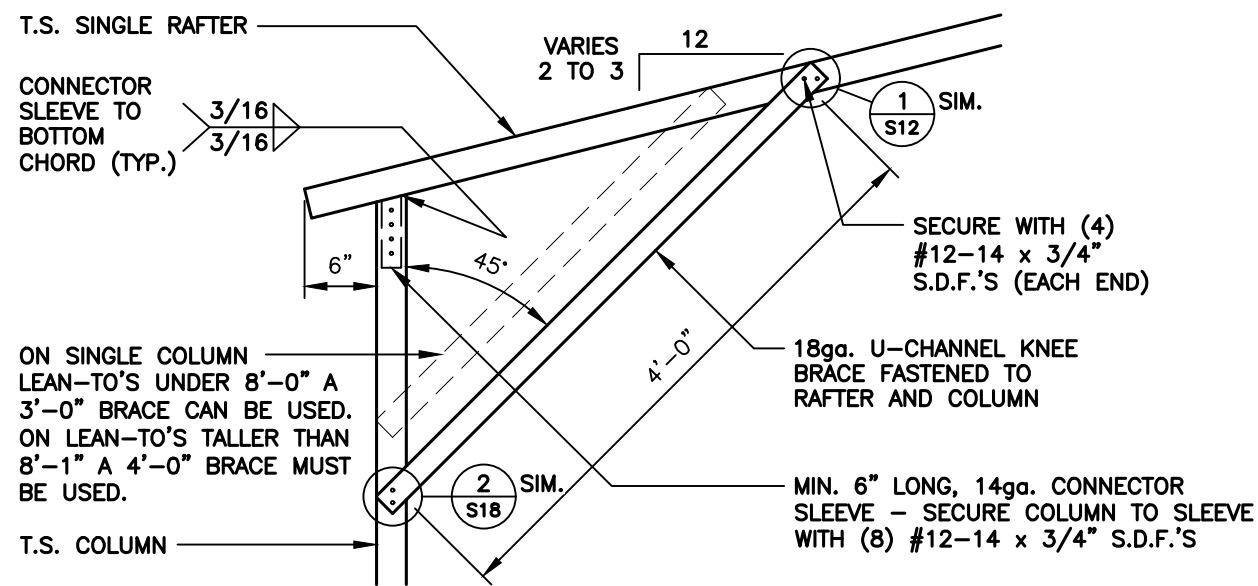
(PARTIALLY) ENCLOSED GABLE END BUILDING  
MAXIMUM >0' TO <30' WIDE x <16' MAXIMUM EAVE HEIGHT (BOX FRAME)  
(UP TO) 145 M.P.H. WIND ZONE - 35/43.5/47 P.S.F. SNOW LOAD(S)

Project No.  
0125-0819  
Sheet No.  
S9A

Date:  
09/29/25  
Revisions:  
-

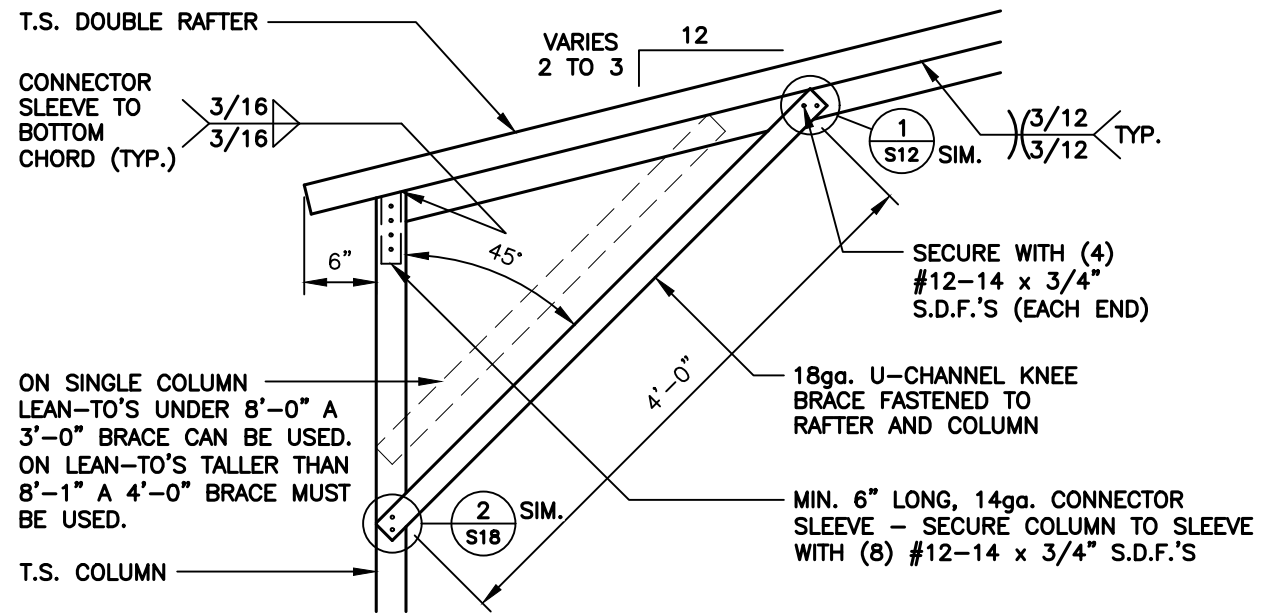


LEAN-TO FRAMING OPTIONS



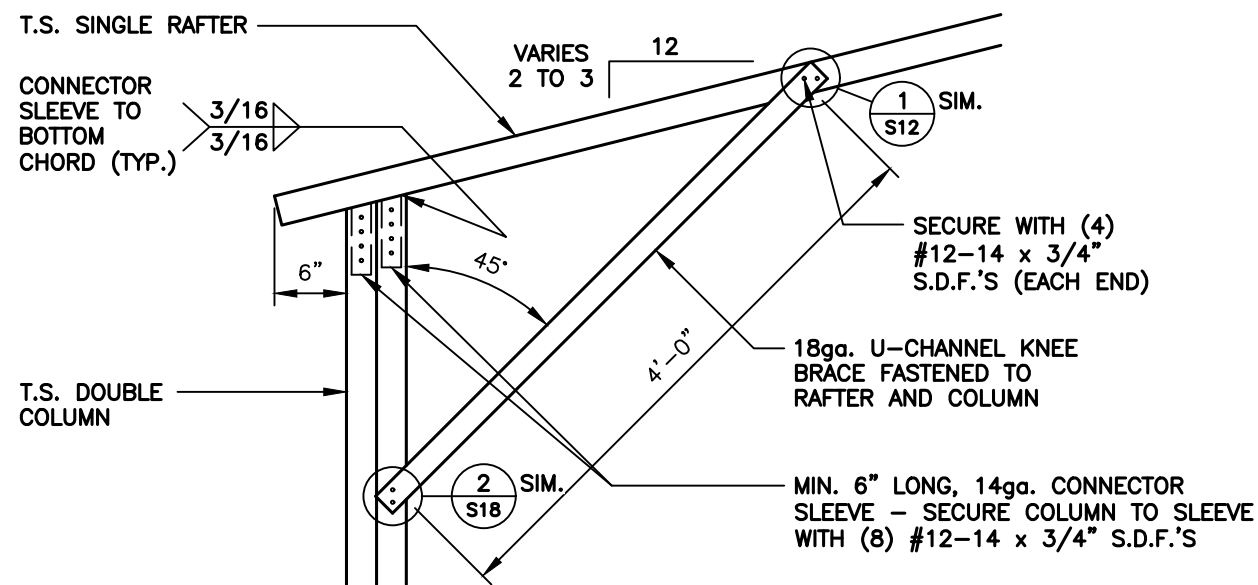
1 LEAN-TO SINGLE RAFTER / SINGLE COLUMN CONNECTION DETAIL

1 S12 SCALE: 3/4" = 1'-0"



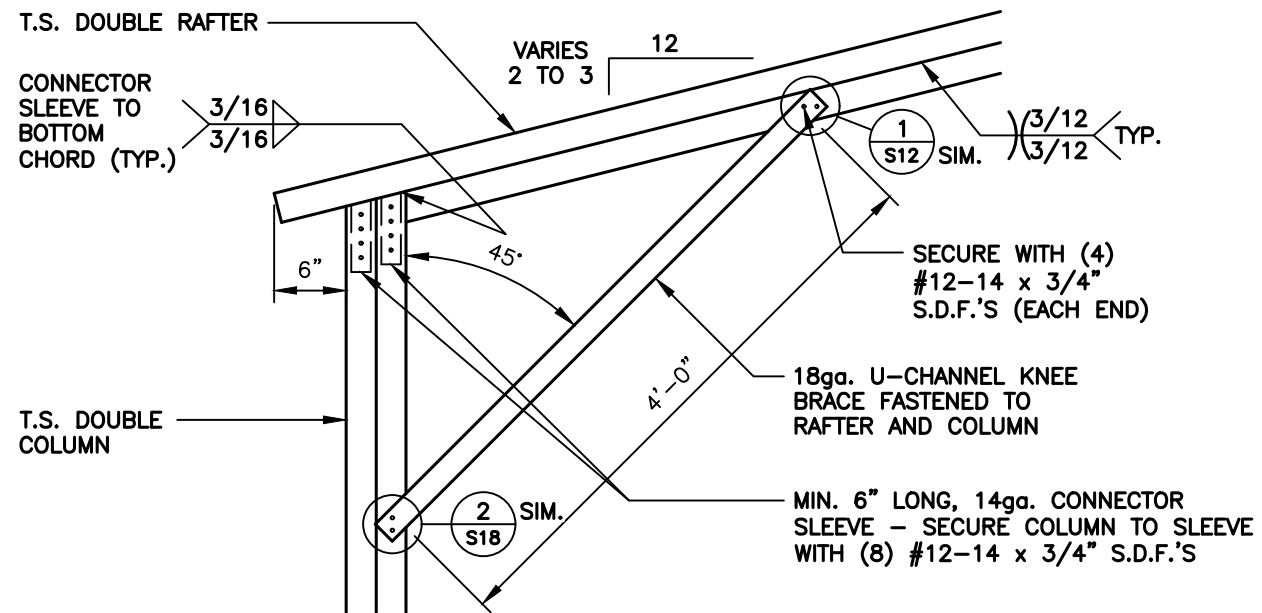
1A LEAN-TO DOUBLE RAFTER / SINGLE COLUMN CONNECTION DETAIL

1A S10 SCALE: 3/4" = 1'-0"



2 LEAN-TO SINGLE RAFTER / DOUBLE COLUMN CONNECTION DETAIL

2 S10 SCALE: 3/4" = 1'-0"



2A LEAN-TO DOUBLE RAFTER / DOUBLE COLUMN CONNECTION DETAIL

2A S10 SCALE: 3/4" = 1'-0"

**JCMT**  
ASSOCIATES, PLLC  
PO BOX 27  
Pilot Mountain, NC 28641  
828-310-7160

Roderick Ducre  
33076 Haines Drive  
Slidell LA 70460

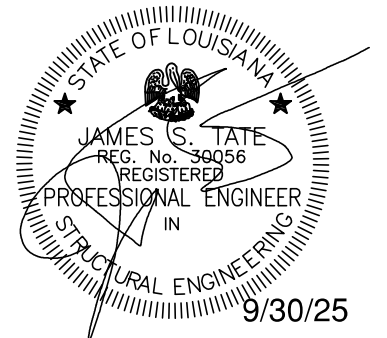
(PARTIALLY) ENCLOSED GABLE END BUILDING  
MAXIMUM >0' TO <30' WIDE x <16' MAXIMUM EAVE HEIGHT (BOX FRAME)  
(UP TO) 145 M.P.H. WIND ZONE - 35/43.5/47 P.S.F. SNOW LOAD(S)

Project No.  
0125-0819

Sheet No.  
S10

Date:  
09/29/25

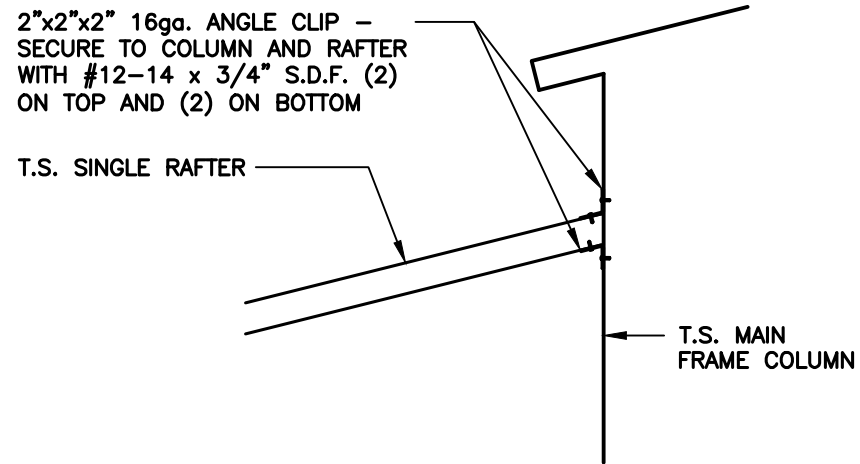
Revisions:



9/30/25

v1.6

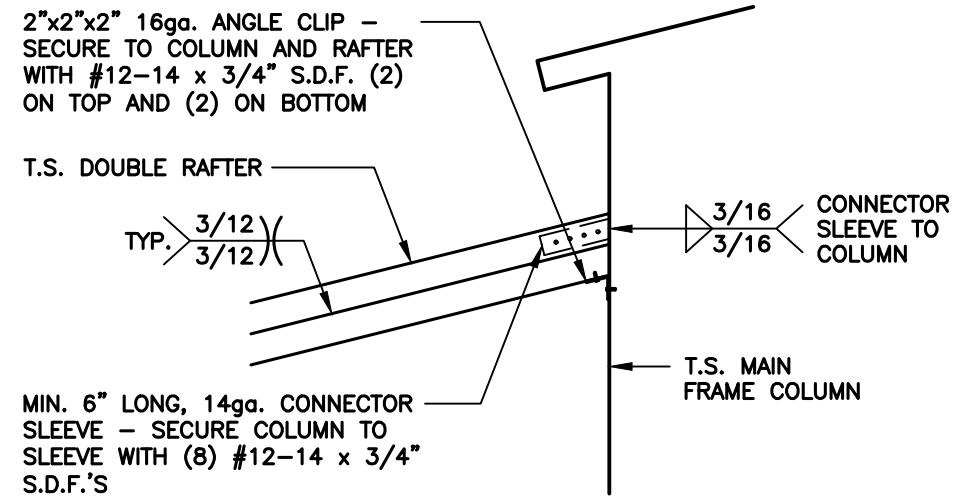
LEAN-TO FRAMING OPTIONS



LEAN-TO SINGLE RAFTER / BUILDING FRAME CONNECTION DETAIL

1  
S10B

SCALE: 3/4" = 1'-0"



LEAN-TO DOUBLE RAFTER / BUILDING FRAME CONNECTION DETAIL

1A  
S10B

SCALE: 3/4" = 1'-0"

**JCMT**  
ASSOCIATES, PLLC  
PO BOX 27  
Pilot Mountain, NC 28641  
828-310-7160

Project No.  
0125-0819

Sheet No.  
S10B

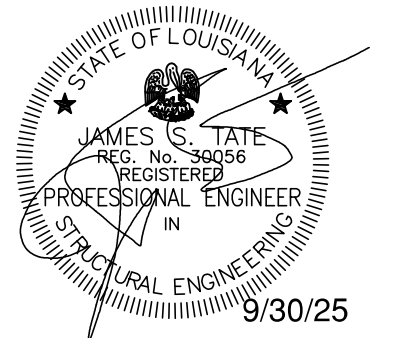
Roderick Ducre  
33076 Haines Drive  
Slidell LA 70460

(PARTIALLY) ENCLOSED GABLE END BUILDING

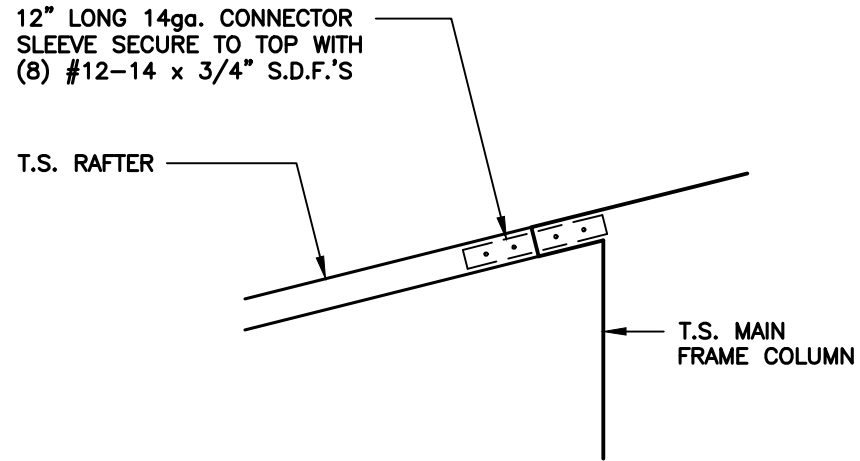
MAXIMUM >0' TO <30' WIDE x <16' MAXIMUM EAVE HEIGHT (BOX FRAME)  
(UP TO) 145 M.P.H. WIND ZONE - 35/43.5/47 P.S.F. SNOW LOAD(S)

Date:  
09/29/25

Revisions:  
-

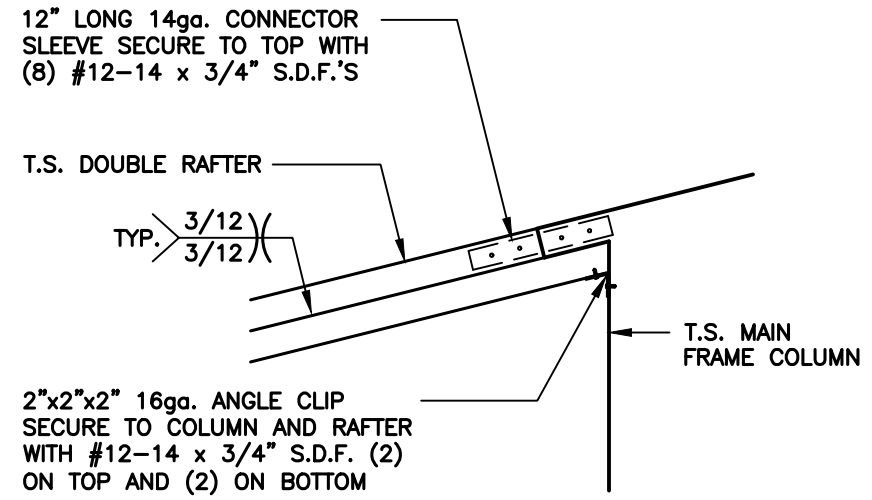


LEAN-TO FRAMING OPTIONS



1  
S10C LEAN-TO SINGLE RAFTER / BUILDING FRAME  
(FLUSH) CONNECTION DETAIL

SCALE: 3/4" = 1'-0"



1A  
S10C LEAN-TO SINGLE RAFTER / BUILDING FRAME  
(FLUSH) CONNECTION DETAIL

SCALE: 3/4" = 1'-0"

**JCMT**  
ASSOCIATES, PLLC  
PO BOX 27  
Pilot Mountain, NC 28641  
828-310-7160

Project No.  
0125-0819

Sheet No.  
S10C

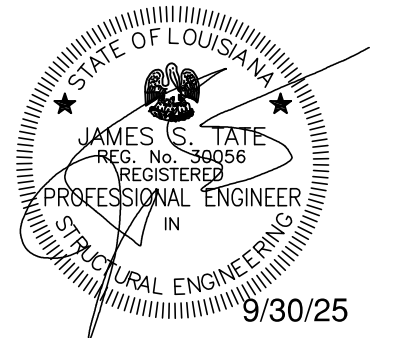
Roderick Ducre  
33076 Haines Drive  
Slidell LA 70460

(PARTIALLY) ENCLOSED GABLE END BUILDING

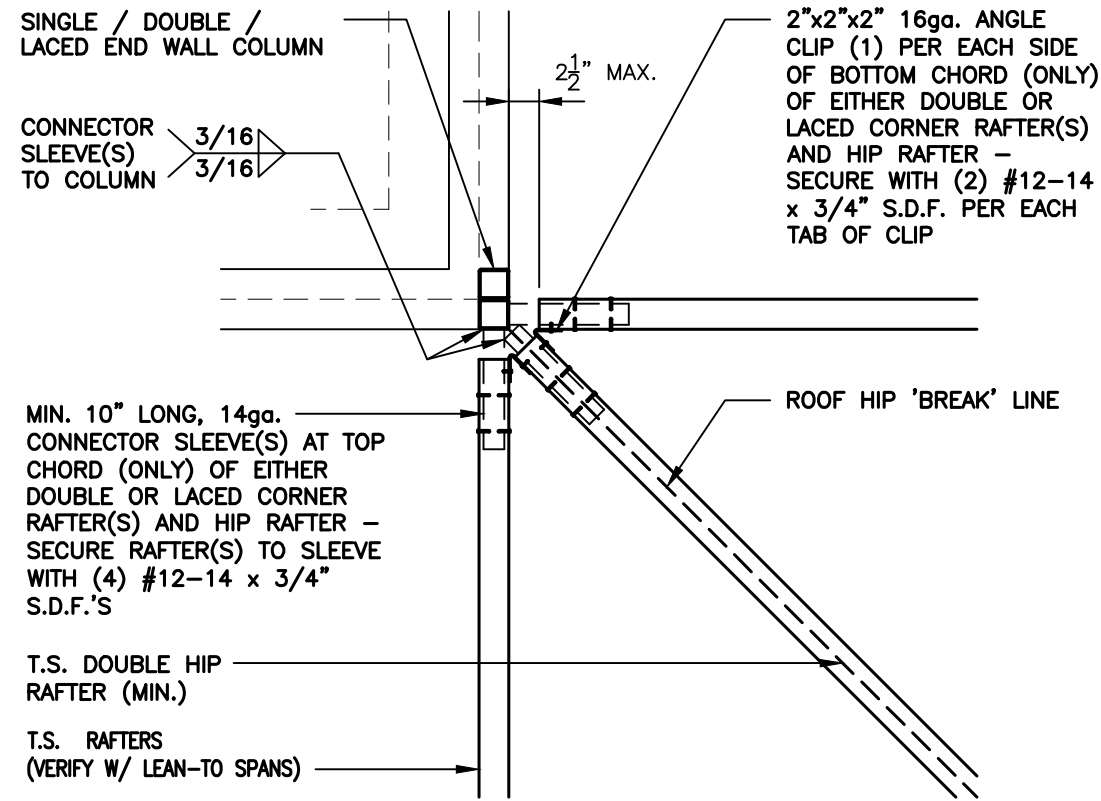
MAXIMUM >0' TO <30' WIDE x <16' MAXIMUM EAVE HEIGHT (BOX FRAME)  
(UP TO) 14.5 M.P.H. WIND ZONE - 35/43.5/47 P.S.F. SNOW LOAD(S)

Date:  
09/29/25

Revisions:  
-



LEAN-TO FRAMING OPTIONS



1  
S10D

END WALL COLUMN / HIP RAFTER  
CONNECTION DETAIL

SCALE: 3/4" = 1'-0"

**JCMT**  
ASSOCIATES, PLLC  
PO BOX 27  
Pilot Mountain, NC 28641  
828-310-7160

Roderick Ducre  
33076 Haines Drive  
Slidell LA 70460

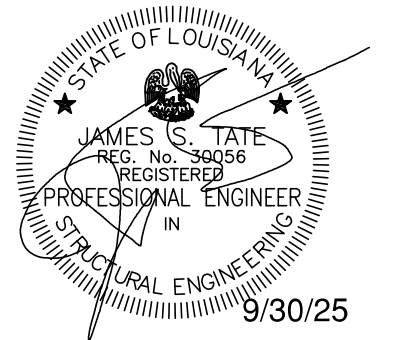
(PARTIALLY) ENCLOSED GABLE END BUILDING  
MAXIMUM >0' TO <30' WIDE x <16' MAXIMUM EAVE HEIGHT (BOX FRAME)  
(UP TO) 145 M.P.H. WIND ZONE - 35/43.5/47 P.S.F. SNOW LOAD(S)

Date:  
09/29/25

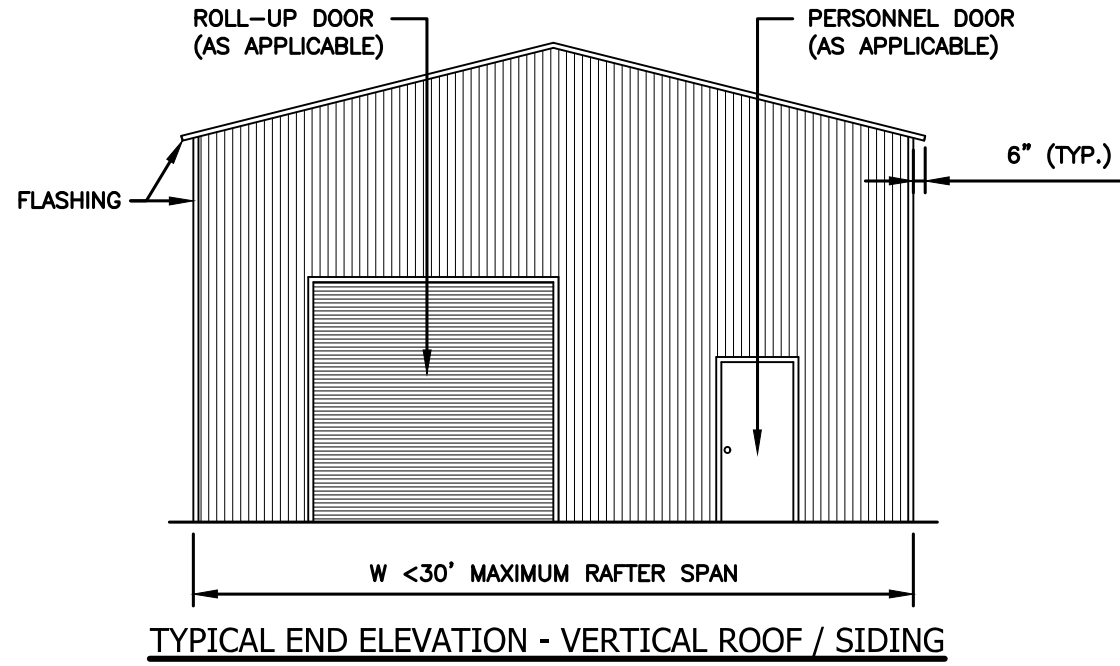
Revisions:  
-

Project No.  
0125-0819

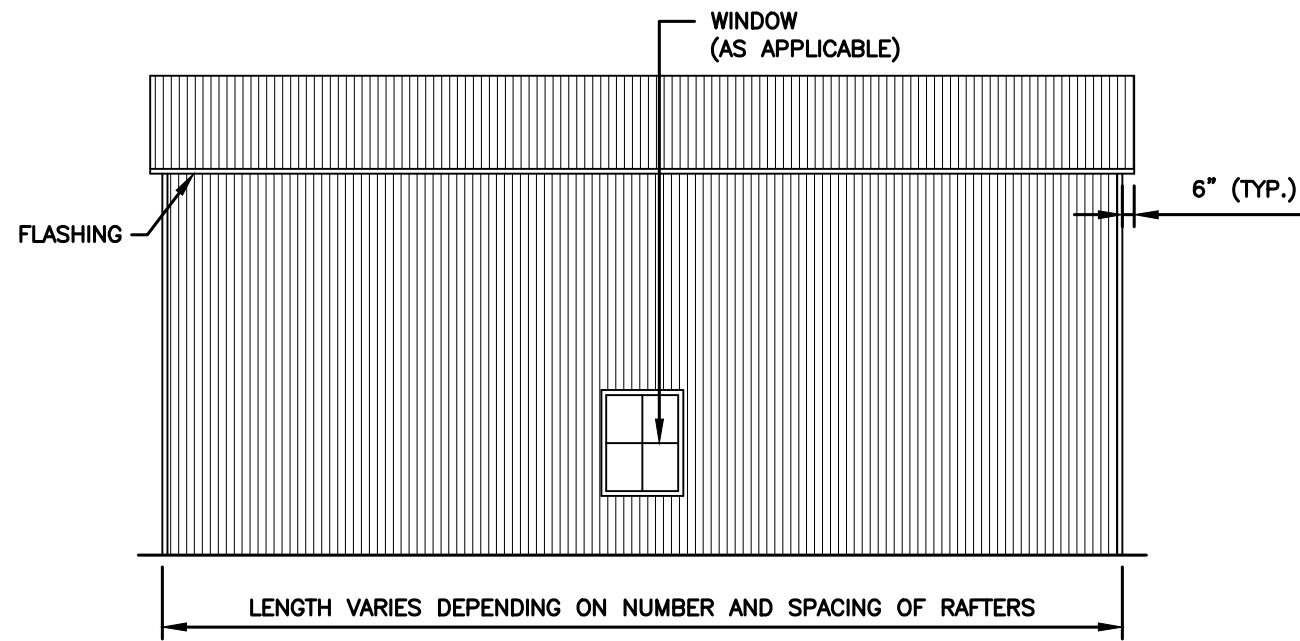
Sheet No.  
S10D



VERTICAL ROOF / SIDING OPTION



TYPICAL END ELEVATION - VERTICAL ROOF / SIDING



TYPICAL SIDE ELEVATION - VERTICAL ROOF / SIDING

**JCMT**  
 ASSOCIATES, PLLC  
 PO BOX 27  
 Pilot Mountain, NC 28641  
 828-310-7160

Roderick Ducre  
 33076 Haines Drive  
 Slidell LA 70460

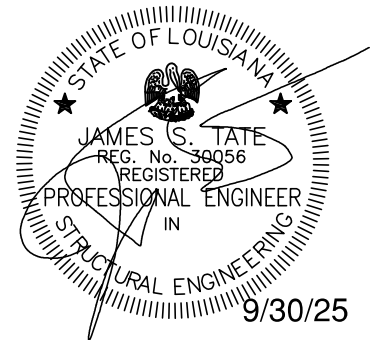
(PARTIALLY) ENCLOSED GABLE END BUILDING  
 MAXIMUM >0' TO <30' WIDE x <16' MAXIMUM EAVE HEIGHT (BOX FRAME)  
 (UP TO) 145 M.P.H. WIND ZONE - 35/43.5/47 P.S.F. SNOW LOAD(S)

Date:  
 09/29/25

Revisions:  
 -

Project No.  
 0125-0819

Sheet No.  
 S11



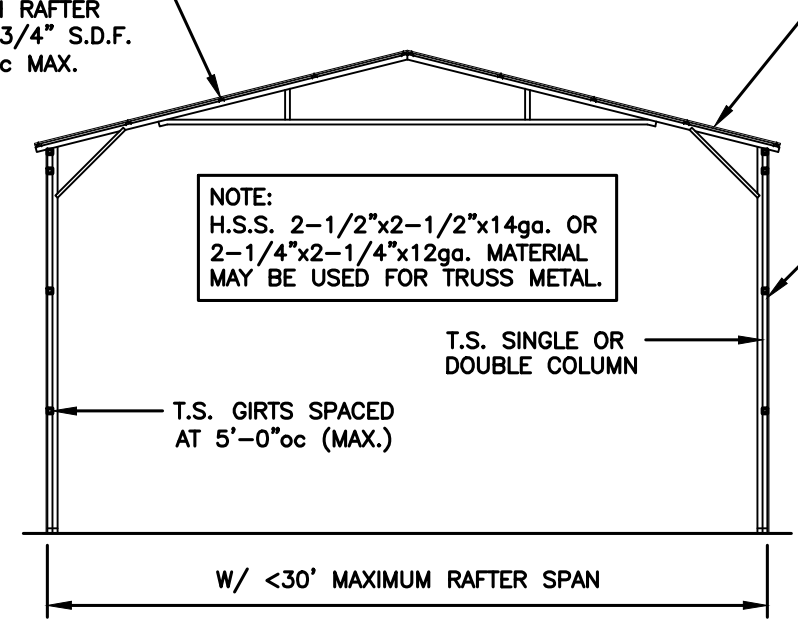
9/30/25

v1.6

VERTICAL ROOF / SIDING OPTION

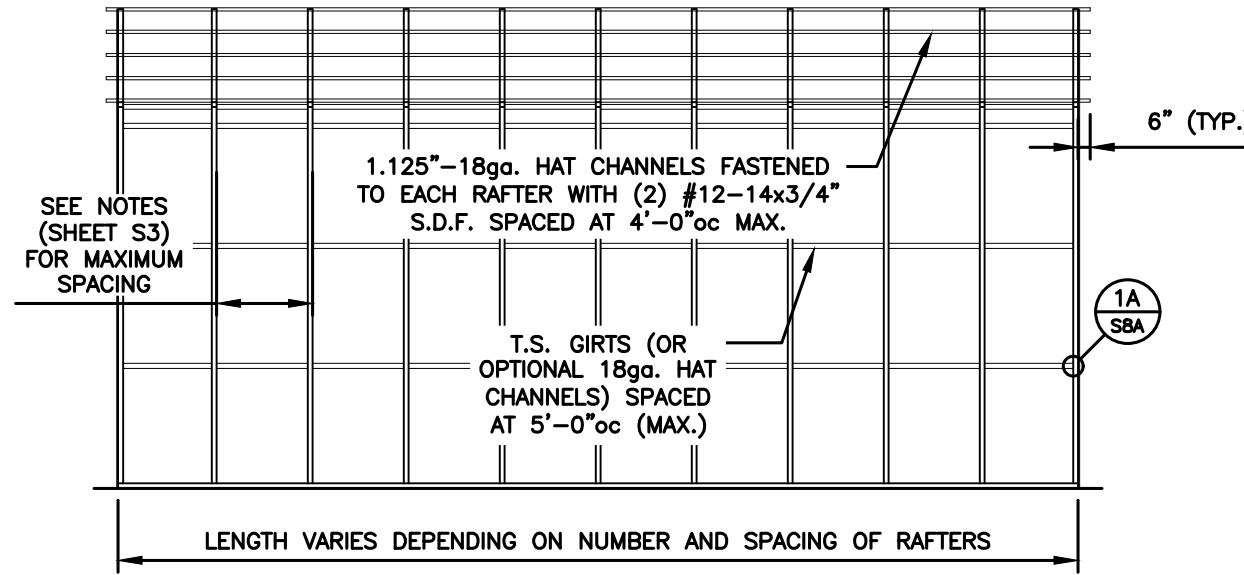
VERTICAL ROOF / SIDING OPTION

1.125"-18ga. HAT CHANNELS FASTENED TO EACH RAFTER WITH (2) #12-14x3/4" S.D.F. SPACED AT 4'-0"oc MAX.

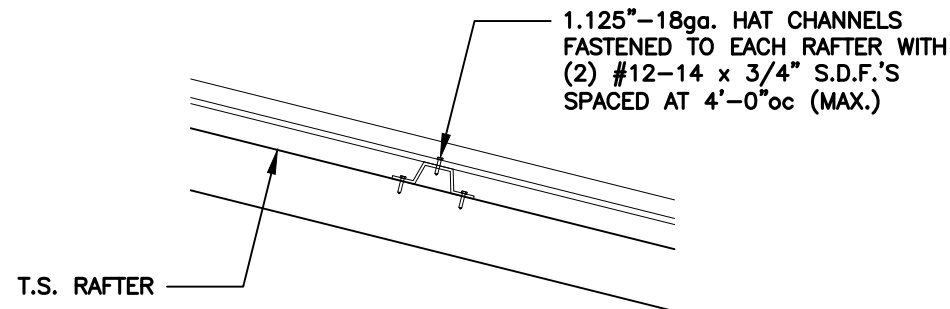


TYPICAL SECTION VERTICAL ROOF / SIDING OPTION

29ga. GALVANIZED METAL ROOF AND WALL PANELS FASTENED TO HAT CHANNELS, GIRTS, POST



TYPICAL SIDE FRAMING SECTION VERTICAL ROOF / SIDING OPTION



(TYPICAL) ROOF PANEL ATTACHMENT

**JCMT**  
ASSOCIATES, PLLC  
PO BOX 27  
Pilot Mountain, NC 28641  
828-310-7160

Roderick Ducre  
33076 Haines Drive  
Slidell LA 70460

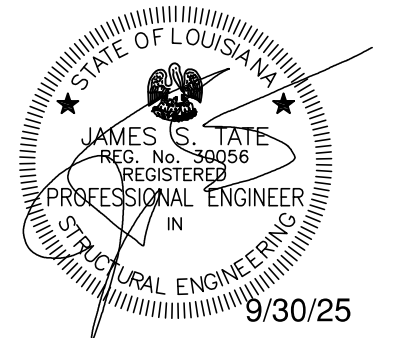
(PARTIALLY) ENCLOSED GABLE END BUILDING  
MAXIMUM >0' TO <30' WIDE x <16' MAXIMUM EAVE HEIGHT (BOX FRAME)  
(UP TO) 145 M.P.H. WIND ZONE - 35/43.5/47 P.S.F. SNOW LOAD(S)

Project No.  
0125-0819

Sheet No.  
S11A

Date:  
09/29/25

Revisions:  
-

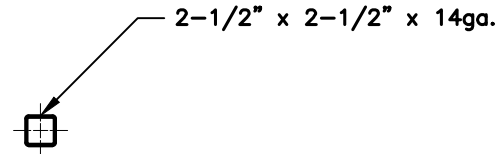


GENERAL NOTE:

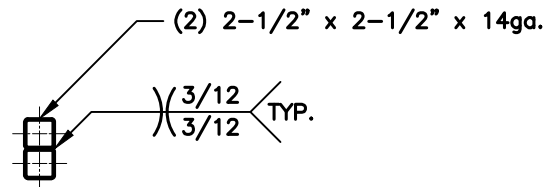
PROVIDE DOUBLE WYTHE HEADER ON DOUBLE COLUMNS.

HEADER OPTIONS

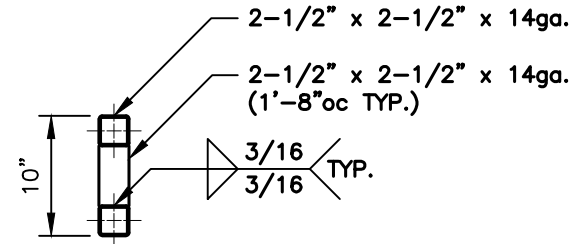
SIDE WALL HEADER OPTIONS



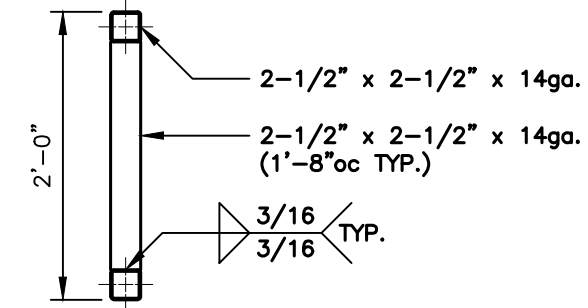
SINGLE T.S. HEADER DETAIL  
FOR OPENINGS <4'-0"



DOUBLE T.S. HEADER DETAIL  
FOR OPENINGS >4'-0" TO <12'-0"

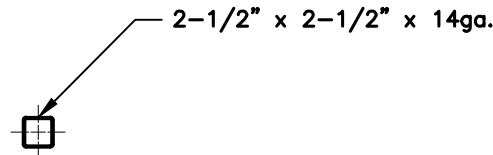


LACED T.S. HEADER DETAIL  
FOR OPENINGS >12'-1" TO <15'-0"

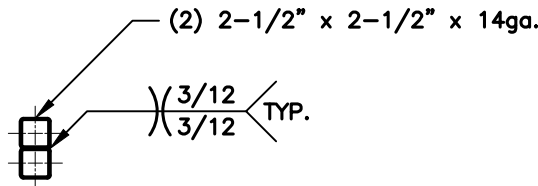


LACED T.S. HEADER DETAIL  
FOR OPENINGS >15'-1" TO <20'-0"

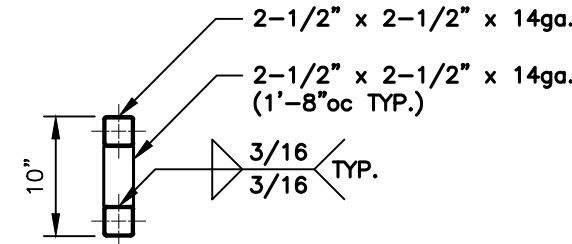
END WALL HEADER OPTIONS



SINGLE T.S. HEADER DETAIL  
FOR OPENINGS <7'-0"

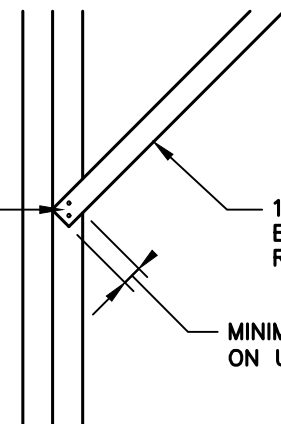


DOUBLE T.S. HEADER DETAIL  
FOR OPENINGS >7'-1" TO <16'-0"



LACED T.S. HEADER DETAIL  
FOR OPENINGS >16'-1" TO <20'-0"

SECURE WITH (4) W12-14x3/4" S.D.F.'S (EACH END) MINIMUM 11/16" SPACING FROM FASTENER TO FASTENER AND FROM FASTENER TO EDGE

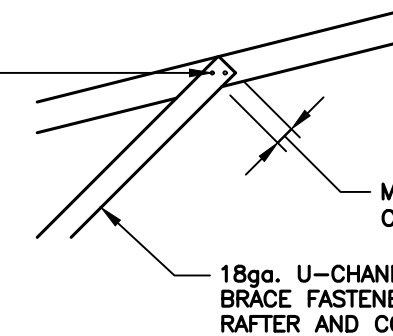


18ga. U-CHANNEL KNEE BRACE FASTENED TO RAFTER AND COLUMN

MINIMUM 1-5/8" COPE ON U-CHANNEL WEB

**1** U-CHANNEL TO COLUMN CONNECTION DETAIL  
S12 SCALE: 3/4" = 1'-0"

SECURE WITH (4) W12-14x3/4" S.D.F.'S (EACH END) MINIMUM 11/16" SPACING FROM FASTENER TO FASTENER AND FROM FASTENER TO EDGE



MINIMUM 1-5/8" COPE ON U-CHANNEL WEB

18ga. U-CHANNEL KNEE BRACE FASTENED TO RAFTER AND COLUMN

**2** U-CHANNEL TO TRUSS CONNECTION DETAIL  
S12 SCALE: 3/4" = 1'-0"

**JCMT**  
ASSOCIATES, PLLC  
PO BOX 27  
Pilot Mountain, NC 28641  
828-310-7160

Roderick Ducre  
33076 Haines Drive  
Slidell LA 70460

(PARTIALLY) ENCLOSED GABLE END BUILDING  
MAXIMUM >0' TO <30' WIDE x <16' MAXIMUM EAVE HEIGHT (BOX FRAME)  
(UP TO) 145 M.P.H. WIND ZONE - 35/43.5/47 P.S.F. SNOW LOAD(S)

Date:  
09/29/25

Revisions:  
-

Project No.  
0125-0819

Sheet No.  
S12

