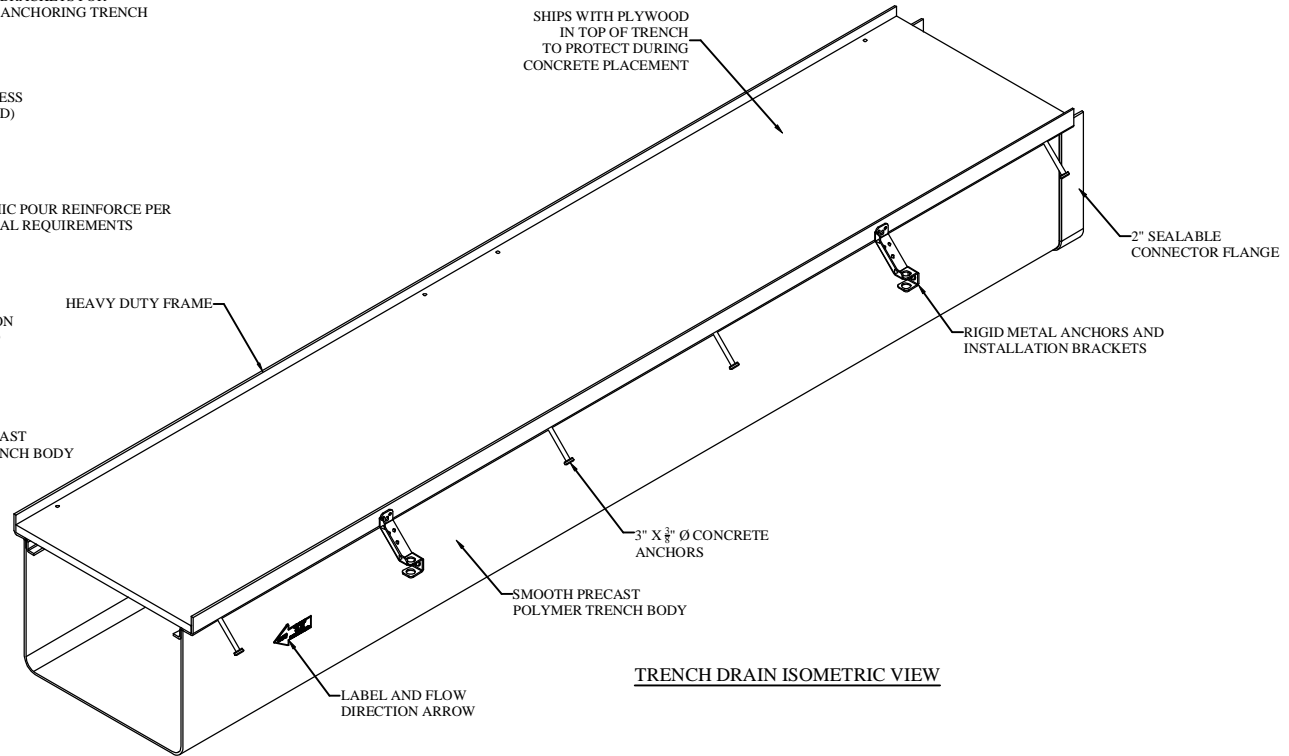


- NOTES:
1. STANDARD SLOPE IS 0.5% UNLESS OTHERWISE SPECIFIED
 2. REINFORCE ACCORDING TO STRUCTURAL REQUIREMENTS
 3. TRENCH DRAIN MUST BE 1/8" BELOW FINISHED CONCRETE GRADE

STP3R18-S6ZMB3S318E
TRENCH DRAIN SECTION VIEW



TRENCH DRAIN ISOMETRIC VIEW