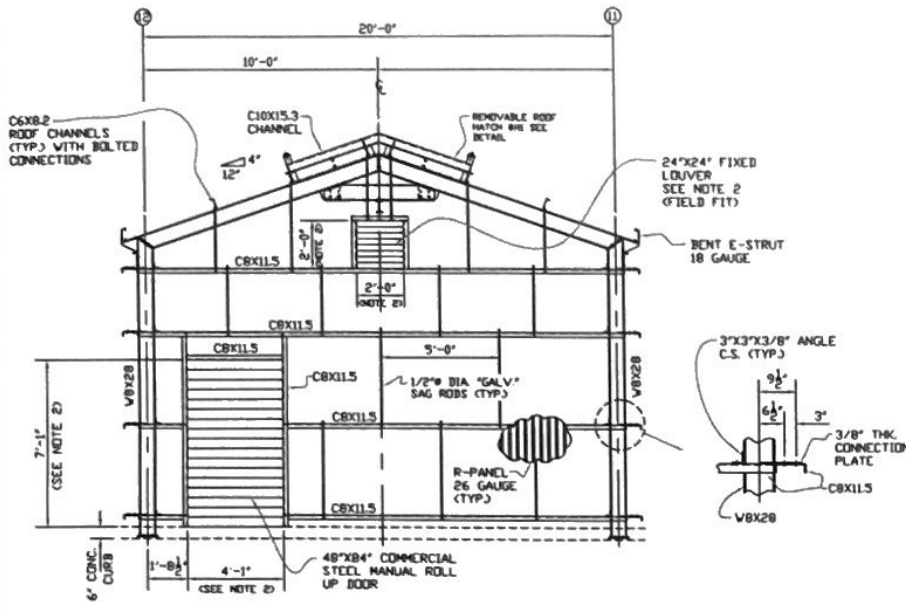
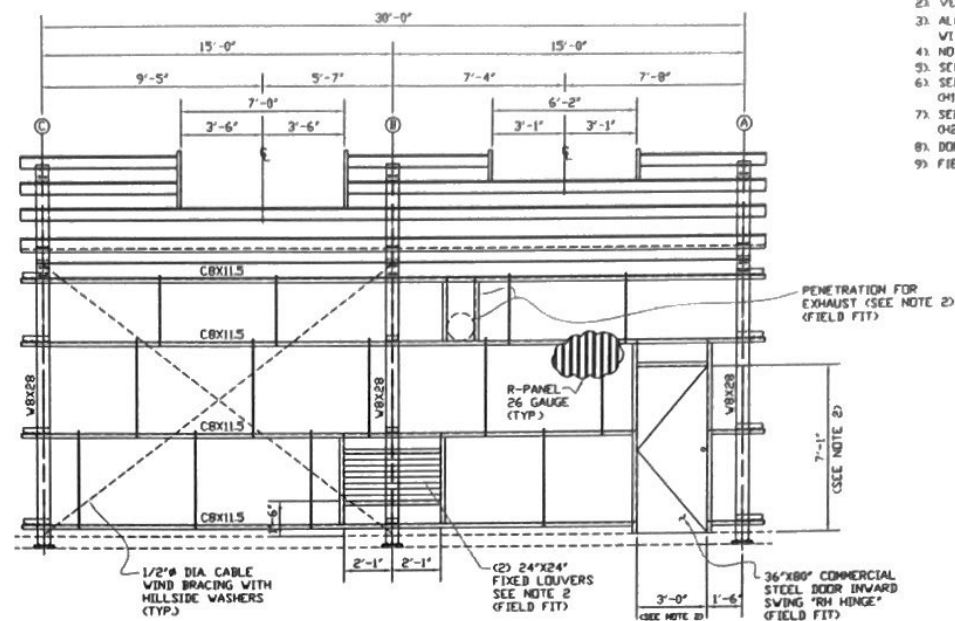


NOTES:

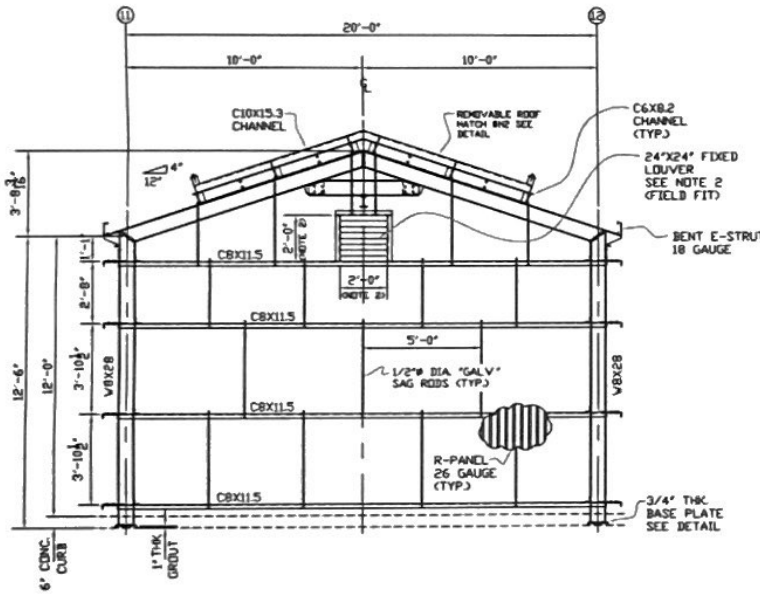
- 1) ALL MATERIAL TO BE "HOT DIPPED GALVANIZED"
- 2) VERIFY MANUFACTURER'S REQUIRED ROUGH OPENING.
- 3) ALL ROOFING & WALLS WILL BE R-PANEL 26 GAUGE WITH TRIM COMPONENTS.
- 4) NO GUTTERS REQUIRED.
- 5) SEE DRAWING #PF-3555-2 FOR PLAN VIEW.
- 6) SEE DRAWING #PF-3555-3 FOR REMOVABLE HATCH (H1) DETAIL.
- 7) SEE DRAWING #PF-3555-4 FOR REMOVABLE HATCH (H2) DETAIL.
- 8) DOORS & LOUVERS WILL BE PURCHASED SEPARATE.
- 9) FIELD FIT ALL (C2) DOORS.



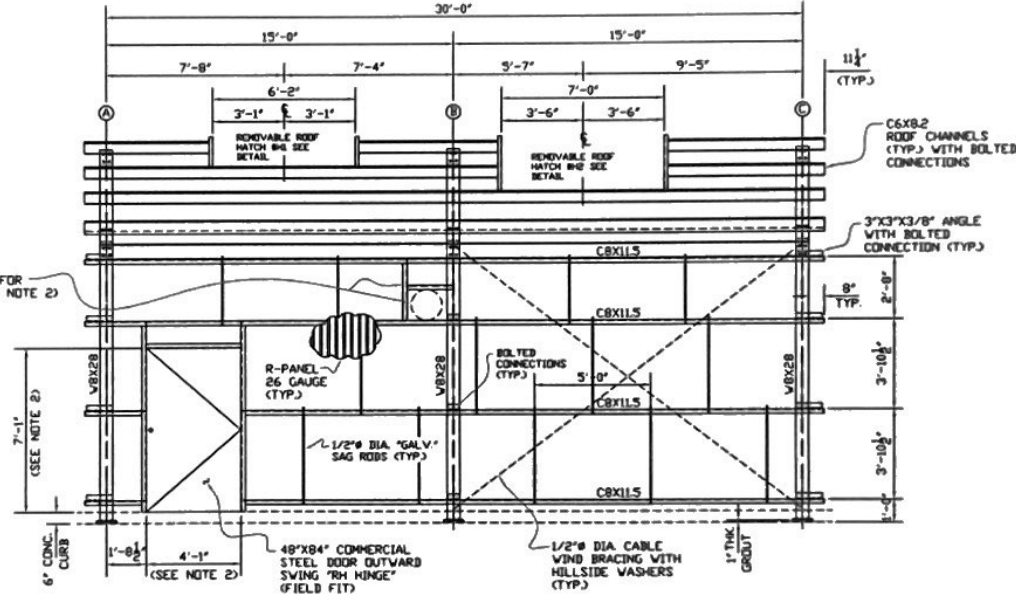
(LOOKING SOUTH)  
**FIREWATER PUMP BUILDING NORTH ELEVATION**  
 SCALE: 3/8"=1'-0"



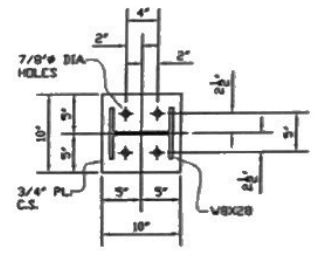
(LOOKING WEST)  
**FIREWATER PUMP BUILDING EAST ELEVATION**  
 SCALE: 3/8"=1'-0"



(LOOKING NORTH)  
**FIREWATER PUMP BUILDING SOUTH ELEVATION**  
 SCALE: 3/8"=1'-0"



(LOOKING EAST)  
**FIREWATER PUMP BUILDING WEST ELEVATION**  
 SCALE: 3/8"=1'-0"

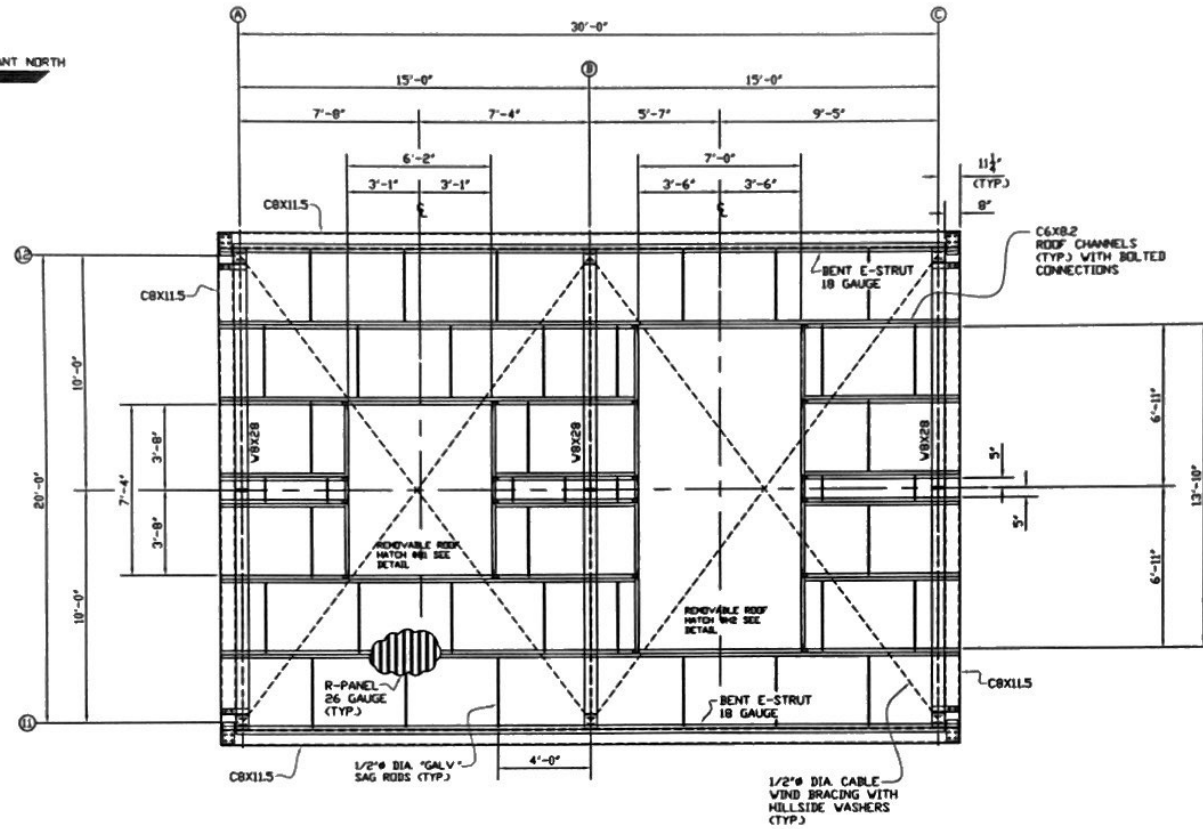


**BASE PLATE DETAIL**  
 SCALE: 3/8"=1'-0"

<b>PICOU-FRADELLA CONSTRUCTION, CO.</b>		CHALMETTE, LA.
SCALE: NOTES	APPROVED BY	DATE: 6/24/25
	JOB # PF-3555	DRW # PF-3
		SHEET 1 OF 4
<b>FIREWATER PUMP BUILDING</b>		
CHEVRON		TRUCK # 3555-1

NOTES:

1. ALL MATERIAL TO BE 'HOT DIPPED GALVANIZED.'
2. VERIFY MANUFACTURER'S REQUIRED ROUGH OPENING.
3. ALL ROOFING & WALLS WILL BE R-PANEL 26 GAUGE WITH TRIM COMPONENTS.
4. NO GUTTERS REQUIRED.
5. SEE DRAWING #PF-3555-1 FOR ELEVATION DETAILS.
6. SEE DRAWING #PF-3555-3 FOR REMOVABLE HATCH (H1) DETAIL.
7. SEE DRAWING #PF-3555-4 FOR REMOVABLE HATCH (H2) DETAIL.
8. DOORS & LOUVERS WILL BE PURCHASED SEPARATE.
9. FIELD FIT ALL (3) DOORS.

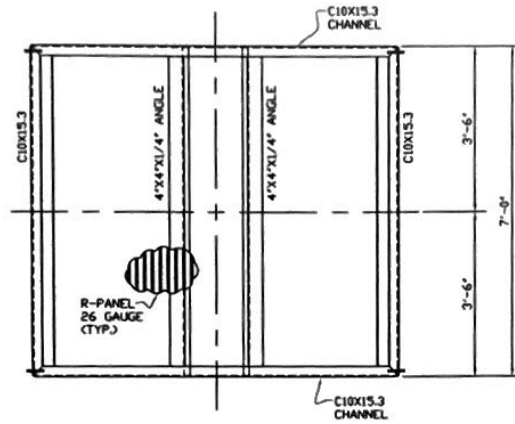
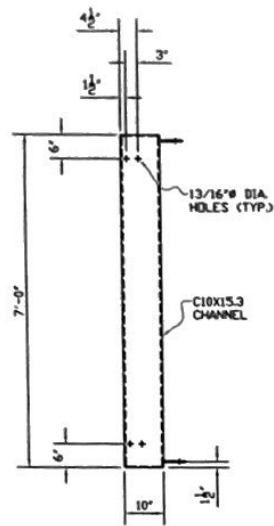


**FIREWATER PUMP BUILDING ROOF PLAN**  
SCALE: 3/8"=1'-0"

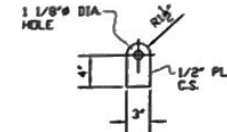
<b>PICOU-FRADELLA CONSTRUCTION, CO.</b>		CHALMETTE, LA.	
SCALE/NOTES	APPROVED BY:	DRAWN BY: P. J. B.	
DATE: 6/24/23	JOB# PF-3555	SHEET 2 OF 3	
<b>FIREWATER PUMP BUILDING</b>			
CHEVRON		SCALE: PF-3555-2	

NOTES:

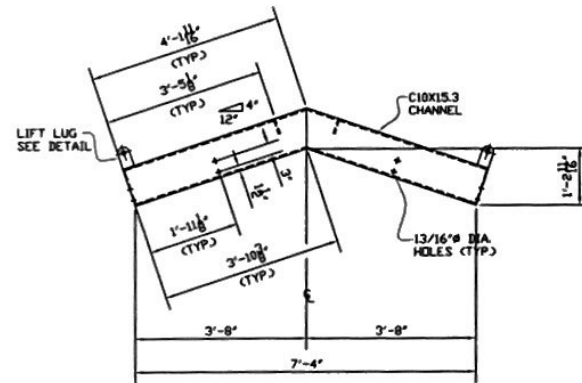
- 1) ALL MATERIAL TO BE "HOT DIPPED GALVANIZED."
- 2) VERIFY MANUFACTURER'S REQUIRED ROUGH OPENING.
- 3) ALL ROOFING & WALLS WILL BE R-PANEL 26 GAUGE WITH TRIM COMPONENTS.
- 4) NO GUTTERS REQUIRED.
- 5) SEE DRAWING #PF-3555-1 FOR ELEVATION DETAILS.
- 6) SEE DRAWING #PF-3555-4 FOR REMOVABLE HATCH (H2) DETAIL.
- 7) DOORS & LOUVERS WILL BE PURCHASED SEPARATE.
- 8) FIELD FIT ALL (3) DOORS.



PLAN VIEW  
SCALE: 3/4"=1'-0"



LIFT LUG DETAIL  
SCALE: 1 1/2"=1'-0"

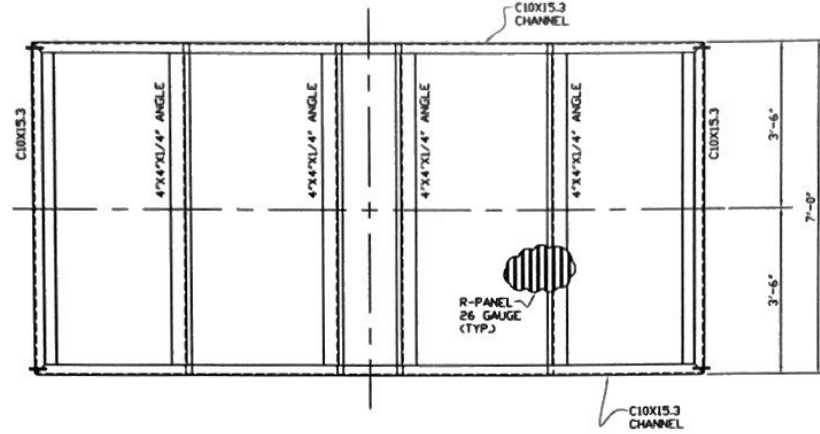
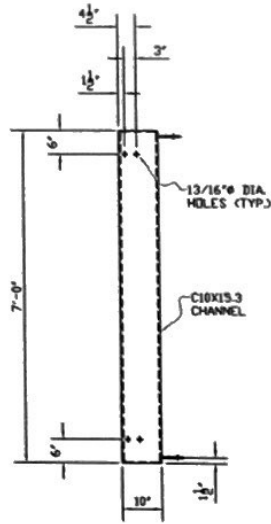


REMOVABLE HATCH #H1 DETAIL  
SCALE: 3/4"=1'-0"  
(1 REQ'D)

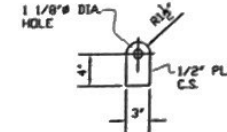
<b>PICOU-FRADELLA CONSTRUCTION, CO.</b>		
CHALMETTE, LA.		
SCALE/NOTED	APPROVED BY	DRAWN BY P.F.L.B.
DATE 4/24/23	JOB # PF-3555	SHEET 3 OF 4
<b>FIREWATER PUMP BUILDING</b>		
CHEVRON	PF-3555-3	

NOTES:

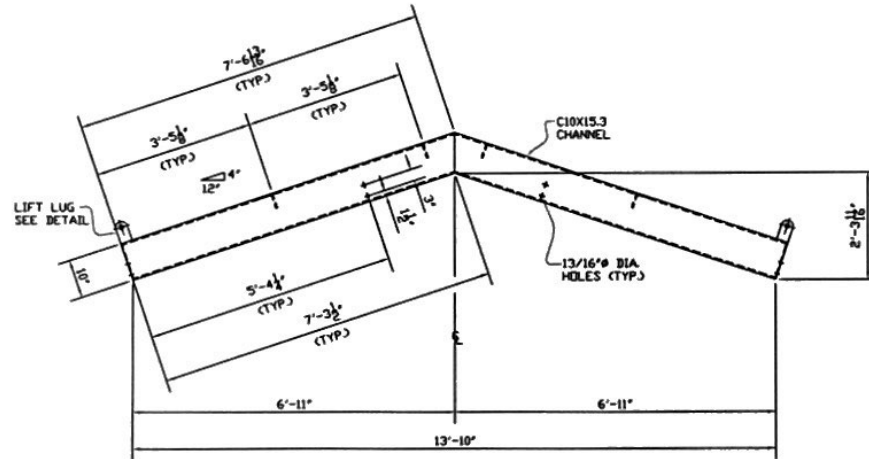
1. ALL MATERIAL TO BE 'HOT DIPPED GALVANIZED.'
2. VERIFY MANUFACTURER'S REQUIRED ROUGH OPENING.
3. ALL ROOFING & WALLS WILL BE R-PANEL 26 GAUGE WITH TRIM COMPONENTS.
4. NO GUTTERS REQUIRED.
5. SEE DRAWING #PF-3555-1 FOR ELEVATION DETAILS.
6. SEE DRAWING #PF-3555-3 FOR REMOVABLE HATCH (H) DETAIL.
7. DOORS & LOUVERS WILL BE PURCHASED SEPARATE.
8. FIELD FIT ALL (3) DOORS.



PLAN VIEW  
SCALE: 3/4"=1'-0"



LIFT LUG DETAIL  
SCALE: 1 1/2"=1'-0"



REMOVABLE HATCH #H2 DETAIL  
SCALE: 3/4"=1'-0"  
(1 REQ'D)

<b>PICOU-FRADELLA CONSTRUCTION, CO.</b> CHALMETTE, LA.		
SCALE/NOTED	APPROVED BY	DRAWN BY P.M.B.
DATE 6/24/25	JOB# PF-3555	SHEET 4 OF 4
<b>FIREWATER PUMP BUILDING</b>		
CHEVRON		2005 PF-3555-4