

CORALAIS™ DECORATOR SERIES

BATH AND SHOWER FAUCET TRIM

K-T15870

ALSO K-15701

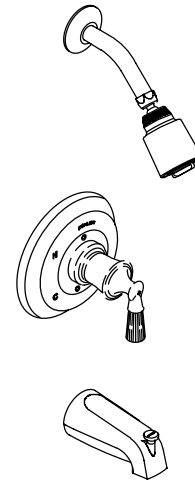
FEATURES

- Metal construction
- 4-7/8" diverter spout with N.P.T. connection
- Available with lever or stacked handle

CODES/STANDARDS APPLICABLE

Specified model meets or exceeds the following:



- ASME/ANSI A112.18.1M
- ASSE/ANSI 1016






COLORS/FINISHES

- CP Polished Chrome
- PB Polished Brass

SPECIFIED MODEL: For complete faucet, both faucet trim and Rite-Temp valve must be specified.

Model	Description		
K-T15870-4K	With Lever Handle	<input type="checkbox"/> CP <input type="checkbox"/> PB	
K-T15870-7K	With Stacked Handle		<input type="checkbox"/> CP <input type="checkbox"/> PB

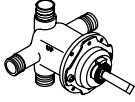
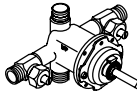
Required Accessory				
	K-15855-4M	Lever, Polished Chrome Insert	<input type="checkbox"/> CP	
	K-15855-4N	Lever, Polished Brass Insert		<input type="checkbox"/> PB
	K-15855-4P	Lever, White Porcelain Insert	<input type="checkbox"/> CP	<input type="checkbox"/> PB
	K-15855-4R	Lever, Acrylic Insert		<input type="checkbox"/> NA
	K-15855-7M	Stacked, Polished Chrome Insert	<input type="checkbox"/> CP	
	K-15855-7N	Stacked, Polished Brass Insert		<input type="checkbox"/> PB

Required and Optional Accessories on Page 2.

PRODUCT SPECIFICATION:

Rite-Temp pressure-balancing single-control bath and shower faucet trim shall be of metal construction. Product shall include showerhead with arm and flange, faceplate with lever or stacked handle, and 4-7/8" diverter spout with N.P.T. connection. Faucet trim shall be Kohler Model K-T15870-____-____ with K-15855-____-____ handle insert. Rite-Temp valve shall be Kohler Model K-____-____-NA.

CORALAIS™ DECORATOR SERIES

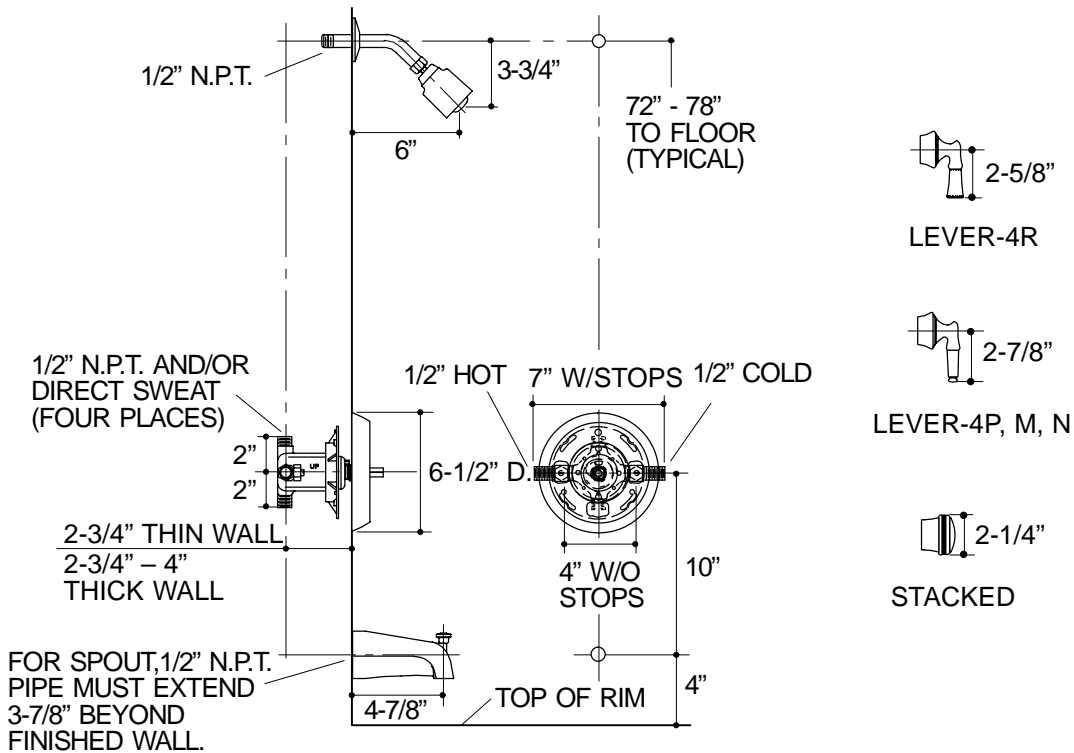
Required Accessory			
K-15701-K	Coralais Rite-Temp Pressure-Balancing Valve, Less Stops	<input type="checkbox"/> NA	
K-15701-KS	Coralais Rite-Temp Pressure-Balancing Valve, With Stops		<input type="checkbox"/> NA

INSTALLATION NOTES

Avoid cross-flow conditions. Do not install shut-off device on either valve outlet.

Cap shower outlet if deck-mount spout, diverter, or handshower is connected to spout outlet.

Install straight pipe or tube drop of 7 to 18" with single elbow between valve and wall-mount spout.



332

PRODUCT DIAGRAM