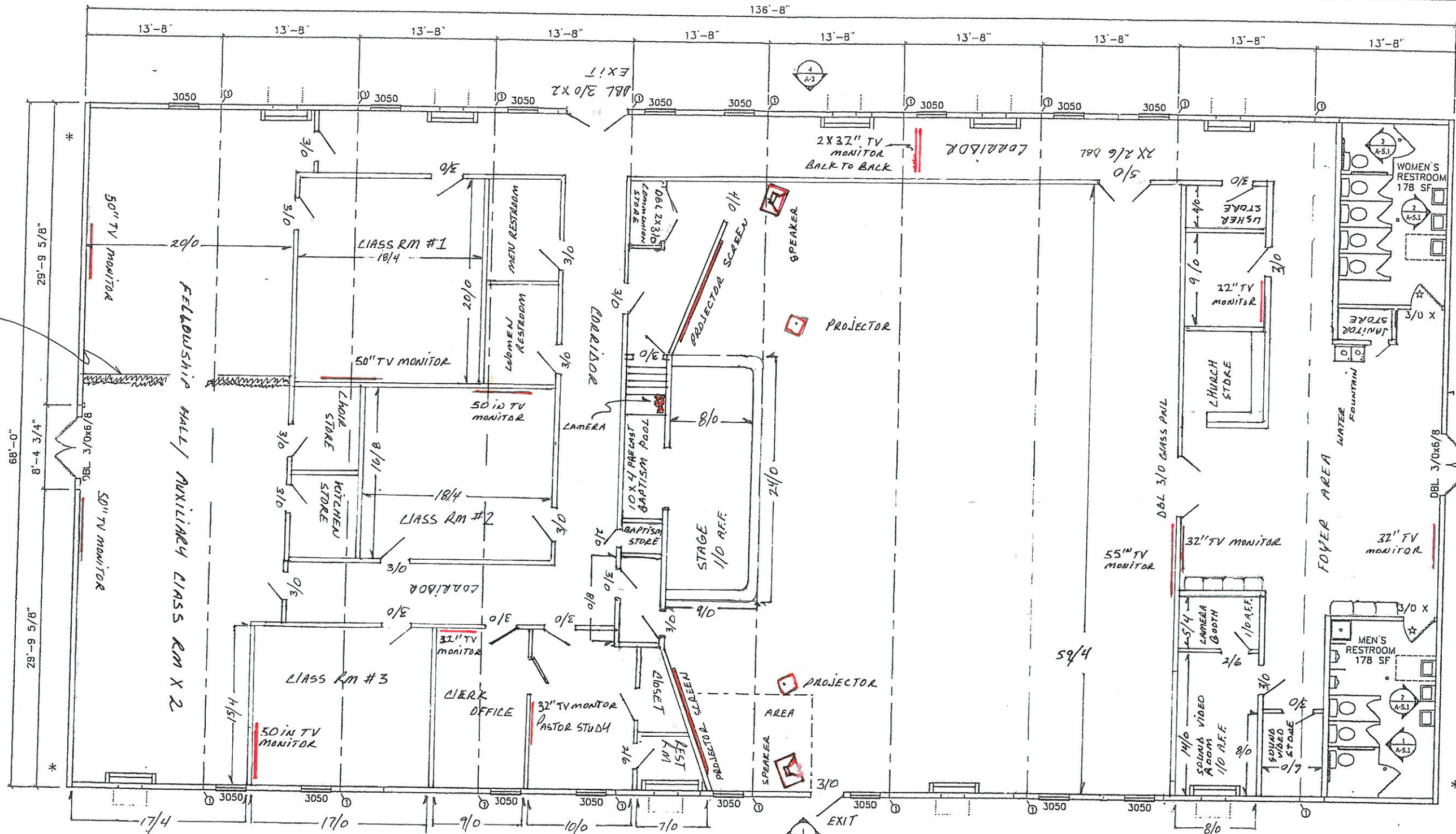


910 ACCORDION DOORS
Room Divider



LOCATION OF TV MONITOR & SPEAKERS

& TIE-DOWNS MIN. REQ'D ALONG SHORT WALL AND 14 TIE-DOWNS ALONG LONG WALL.

DOOR LEGEND					
CALLOUT	NOMINAL SIZE	MATERIAL	HARDWARE	GLAZING	NOTES
DBL 3/0x6/8	6'-0" x 6'-8"	18ga. STEEL DOOR	PULL / PANIC	6x27	REMOVABLE MULLION
3/0	3'-0" x 6'-8"	PRE-FINISHED SOLID CORE	LEVER, KEYED	NONE	KEYED SEPARATELY
3/0 V	3'-0" x 6'-8"	PRE-FINISHED SOLID CORE	LEVER, PRIVACY	NONE	
3/0 P	3'-0" x 6'-8"	PRE-FINISHED SOLID CORE	LEVER, PASSAGE	NONE	KICKPLATES

THRESHOLDS AT DOORS NOT TO EXCEED 1/2", AND ARE TO BE BEVELED IF IN EXCESS OF 1/4"

WINDOW LEGEND							
CALLOUT	NOMINAL SIZE	LIGHT	VENT	MATERIAL	FINISH	STYLE	GLAZING
3050	36" x 60"	10.51	5.25	ALUMINUM	MILL	SINGLE HUNG	DUAL / CLEAR / LOW-E

NOTE: WINDOWS MEET ALL REQUIREMENTS FOR EGRESS WINDOWS

- * - DENOTES SHEAR WALL LOCATION
- ⊙ - DENOTES 3-EA. 2x4'S AND 1- SIMPSON MSTI 26 PER MANUF.'S SPECS. AT CORRIDOR WALLS AND 3"x 26 GA. STRAPS AT SIDEWALLS.
- ☆ - DENOTES 20 MINUTE RATED DOOR
- ★ - DENOTES 45 MINUTE RATED DOOR



1 FLOOR PLAN
Scale: 3/32" = 1'-0"

5/18/07

LAZENBY & ASSOCIATES
CONSULTING ENGINEERS
2000 N. 7th STREET
WEST MOBILE, LOUISIANA 36688
PHONE: 318-397-2710

COMARK
BUILDING SYSTEMS, INC.
© 2007, COMARK BUILDING SYSTEMS, INC. All Rights Reserved.
205 N. BECKLEY AVE.
DENTON, TEXAS 76113

No.	DESCRIPTION	BY	DATE

DATE: 5/14/07
SCALE: 3/32" = 1'-0"
PLOT SCALE: 1:1
DRAWN BY: SCD
CHECKED BY: SCD

RSD BUILDING "C"
NEW ORLEANS, LOUISIANA
FLOOR PLAN
FILE: 68137RSD-C
SERIAL #: 2920-22

SHEET No.
A-2