



DAMMON ENGINEERING, INC.
EMMETT DAMMON

ARCHITECT
ROBERT WILTSE

554 OLD SPANISH TR.
SLIDELL, LA. 70458
985-649-5832

WEBSITE:
WWW.DAMMONENGINEERING.COM

EMAIL:
DAMMONENG@BELLSOUTH.NET

ARCHITECTURE

ENGINEERING

STUDIES

PLANNING

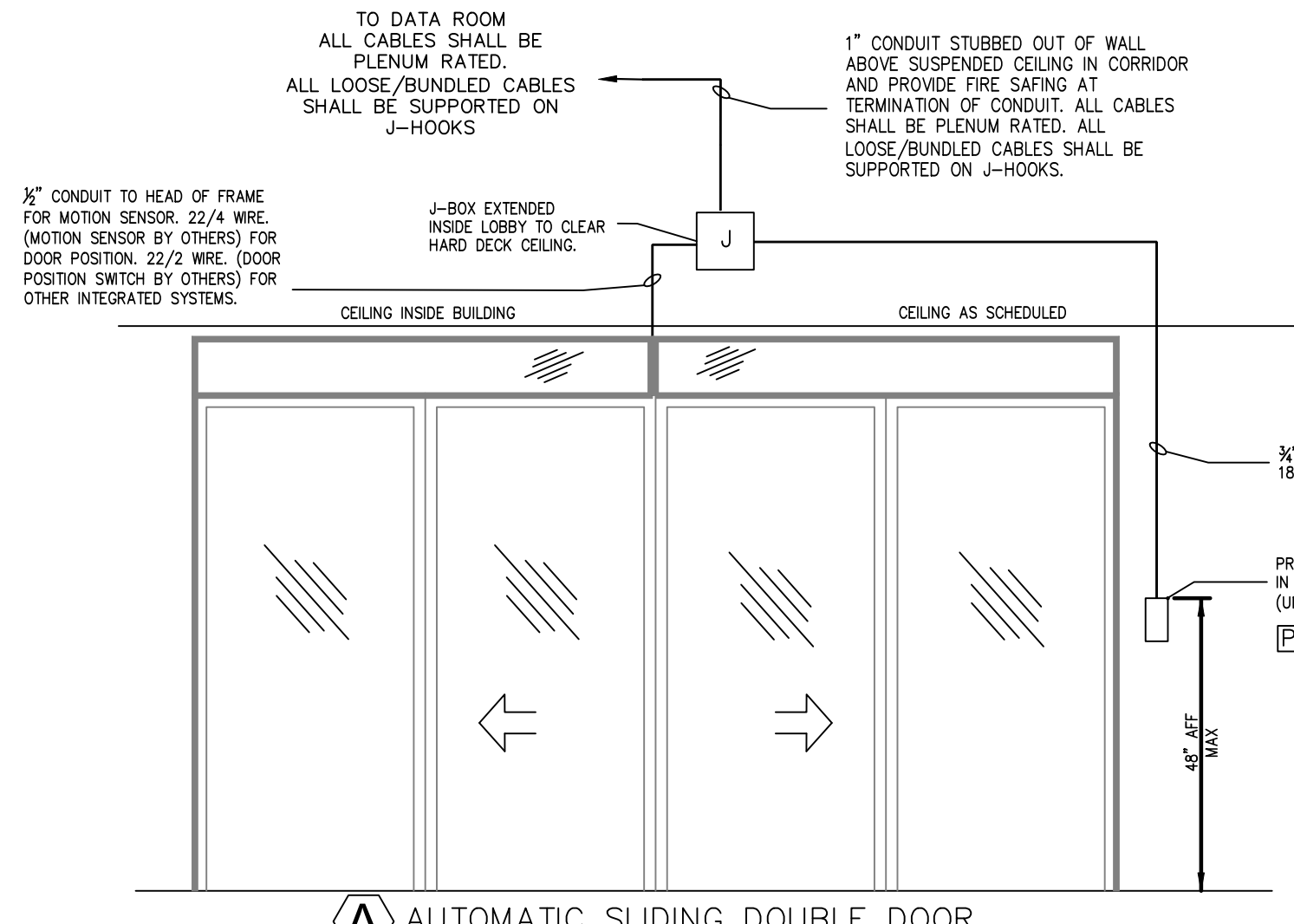
INVESTIGATION

EXPERT WITNESS

FREEDOM ALARM
P.O. BOX 399
ABITA SPRINGS
(985) 809-9639

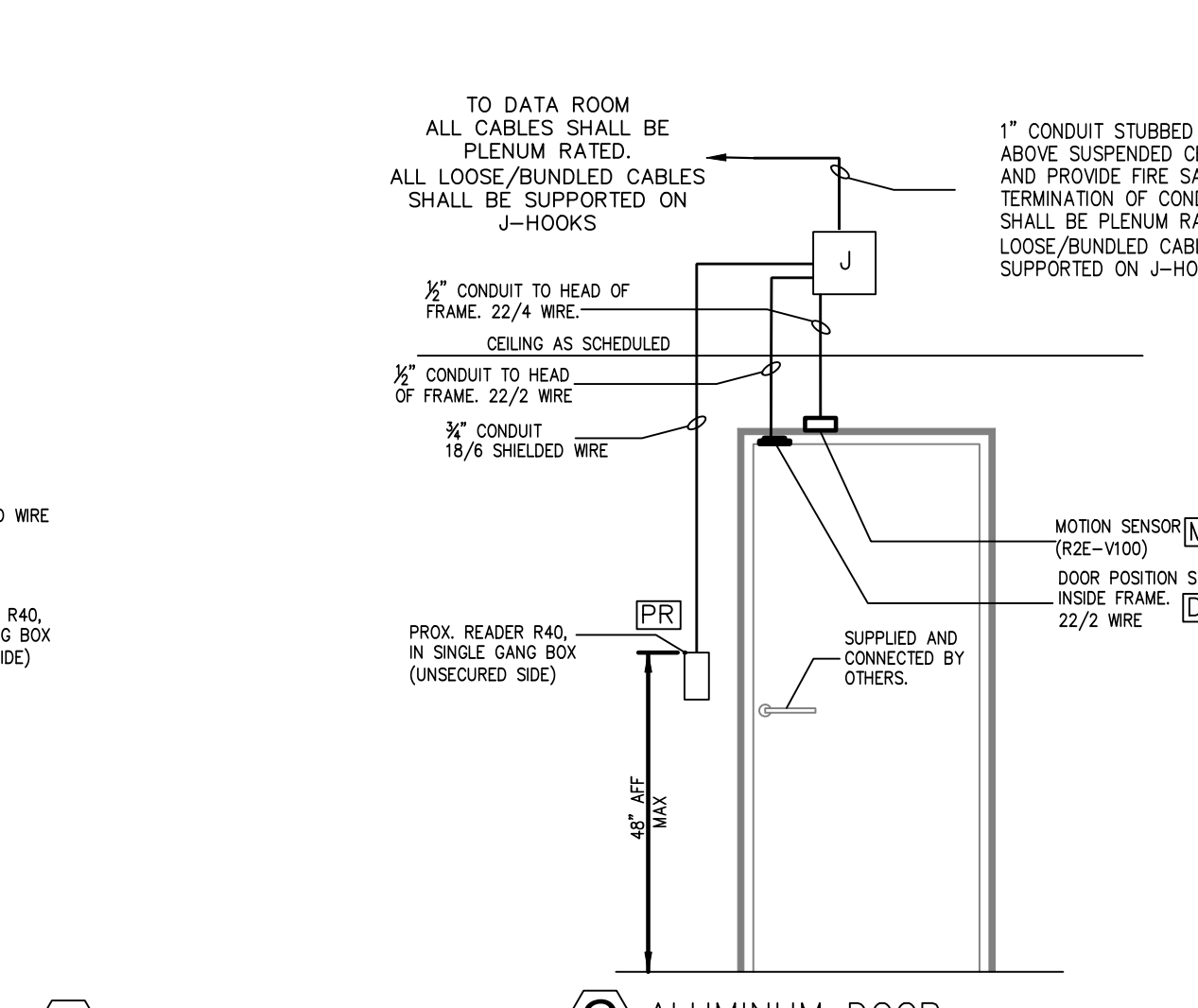
NORTH OAK
MEDICAL CENTER
EXPANSION
PHASE I
15790 PAUL
VEGA MD DR.
HAMMOND, LA
70403

SECURITY ACCESS
DETAILS

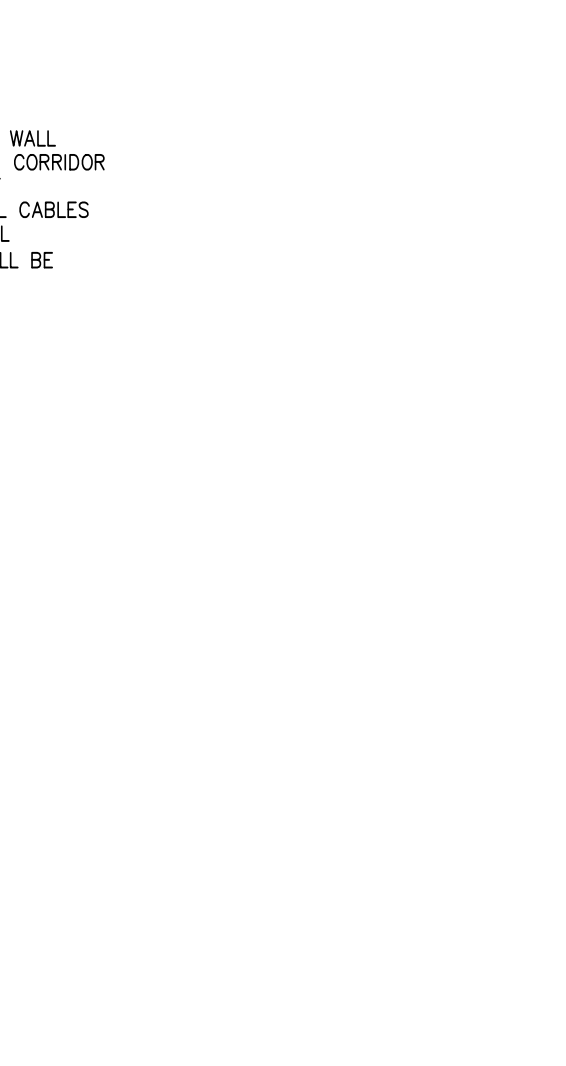


A AUTOMATIC SLIDING DOUBLE DOOR

Door	R40 PR	R10 PR	MS	DP
1001A	0	1	0	2
1051A	0	1	0	2
1200A	0	1	0	2

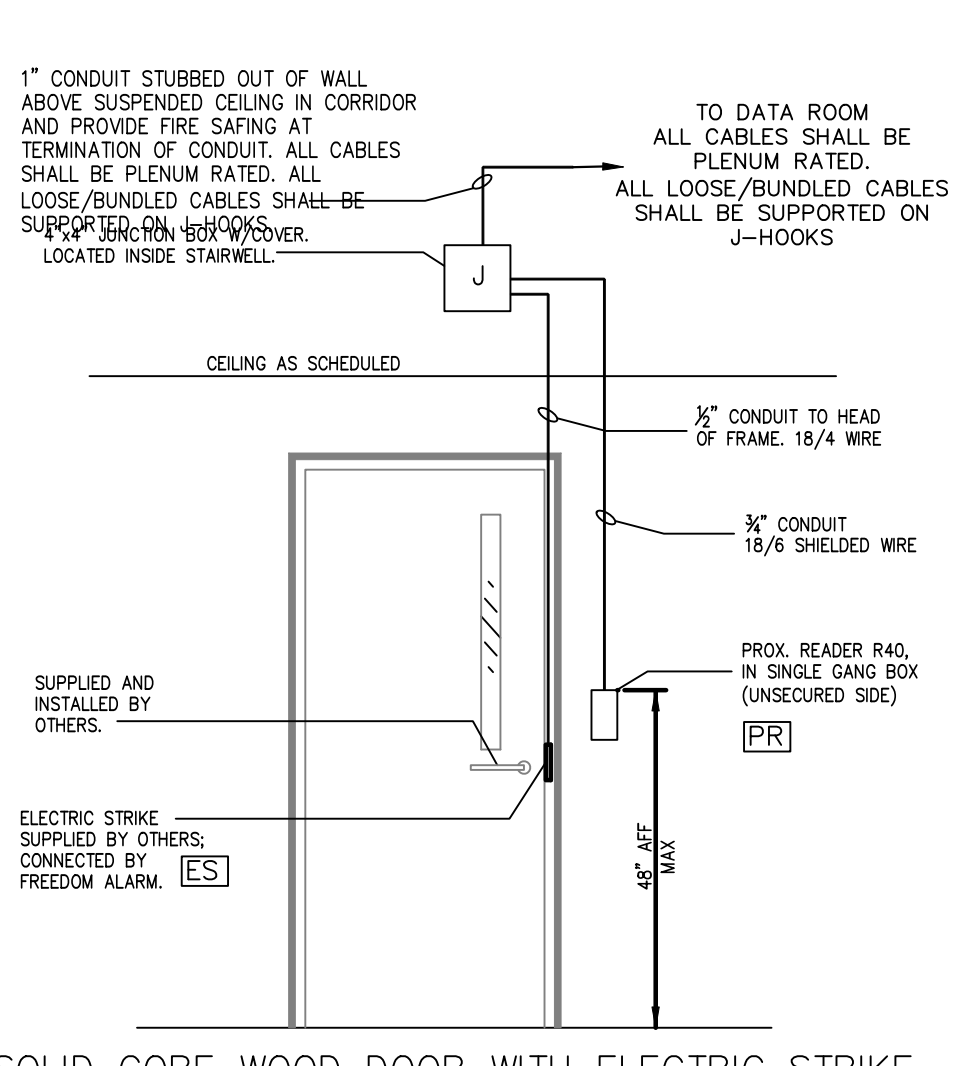


B NOT USED



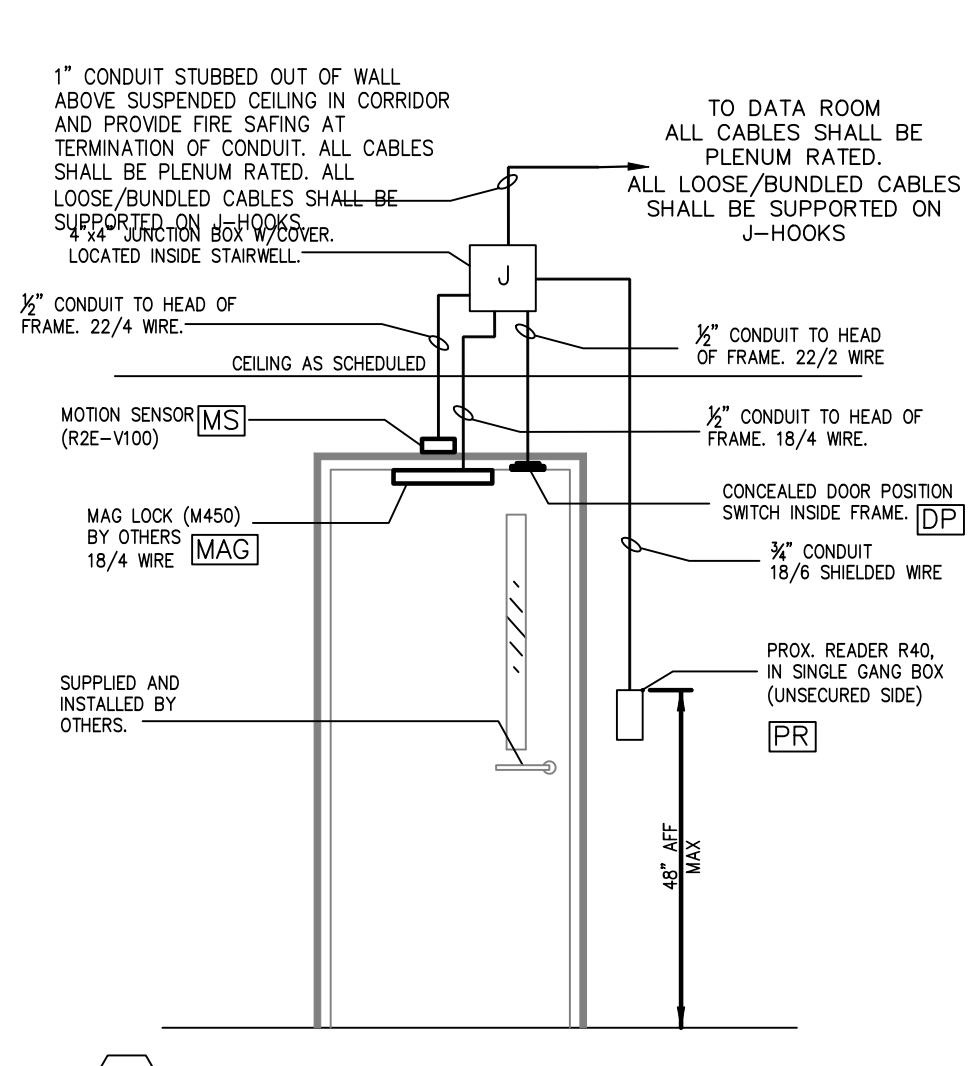
C ALUMINUM DOOR

Door	R40 PR	R10 PR	MS	DP
1002B	1	0	1	1



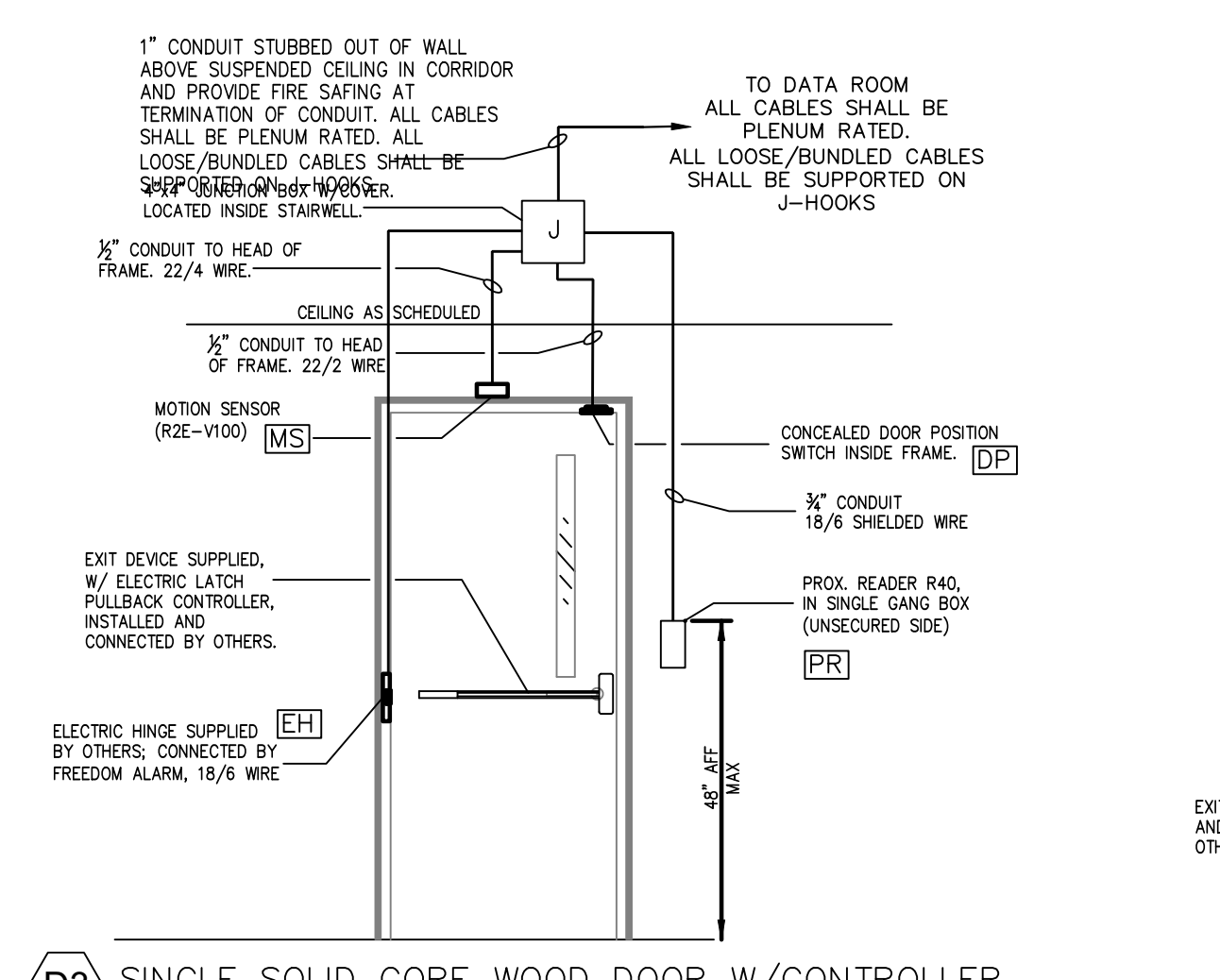
D1 SOLID CORE WOOD DOOR WITH ELECTRIC STRIKE

Door	R40 PR	R10 PR	MS	DP
1201	1	0	0	0
1302	1	0	0	0
2001	2	0	0	0
2442A	1	0	0	0
2457	1	0	0	0
2458	1	0	0	0
2500B	1	0	0	0
2632	1	0	0	0
3130	1	0	0	0
4130	1	0	0	0
5237A	1	0	0	0



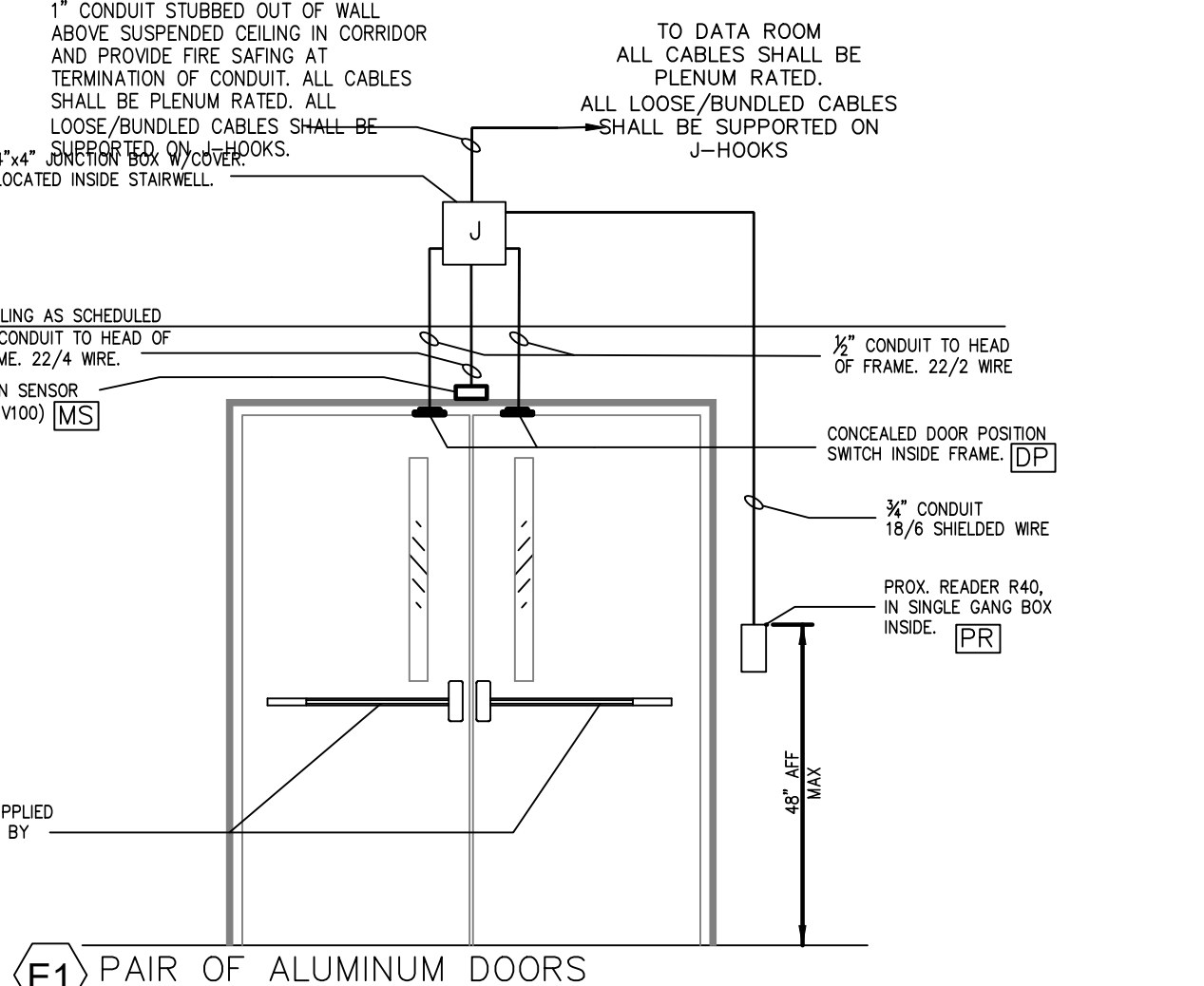
D2 SOLID CORE WOOD DOOR W/MAG LOCK

Door	R40 PR	R10 PR	MS	DP
ST1-5	1	0	1	1
ST3-2	1	0	1	1
ST3-5	1	0	1	1
EST5-1	1	0	1	1
EST5-3	1	0	1	1



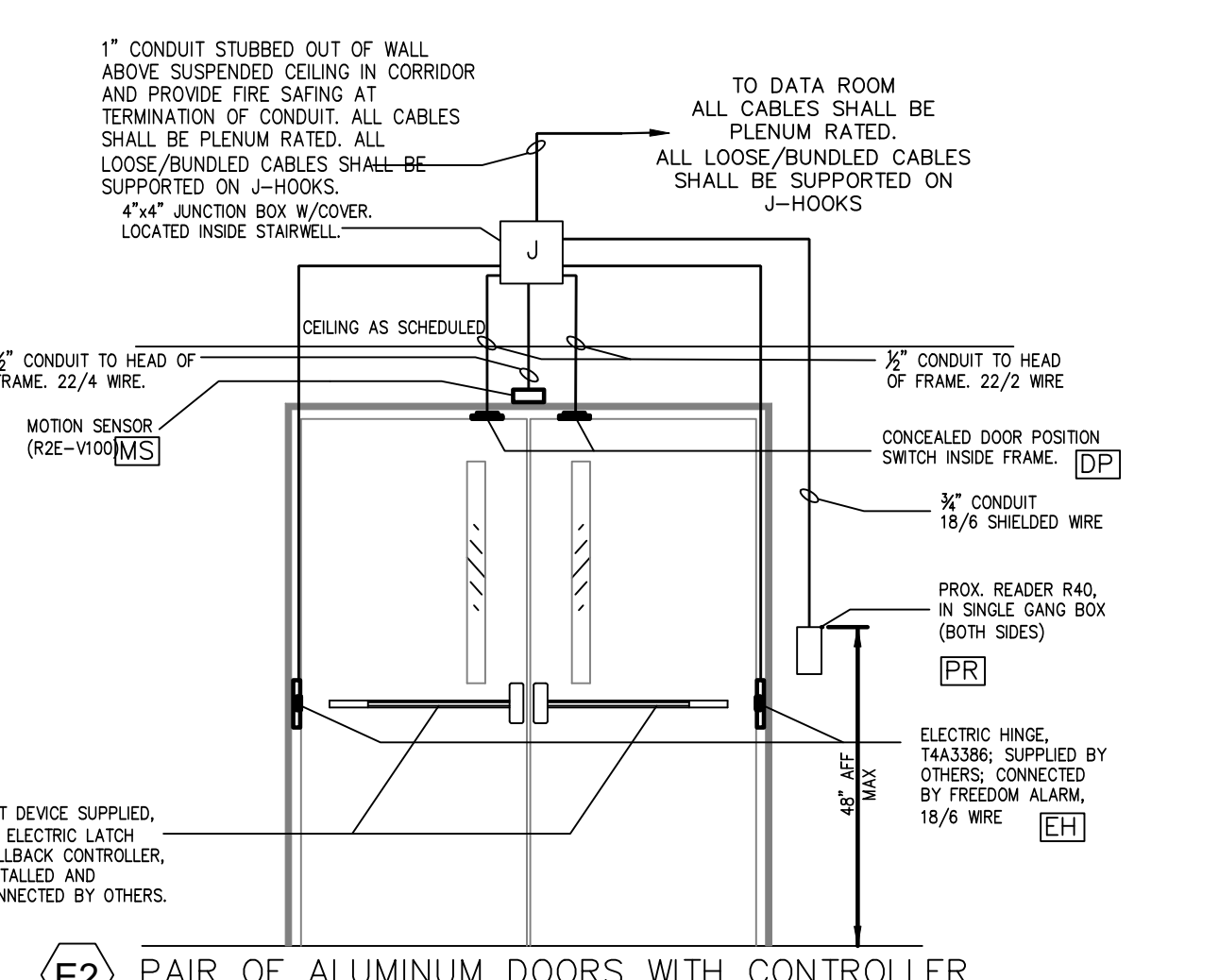
D3 SINGLE SOLID CORE WOOD DOOR W/CONTROLLER

Door	R40 PR	R10 PR	MS	DP	EH
ST4-2	1	0	1	1	QC8



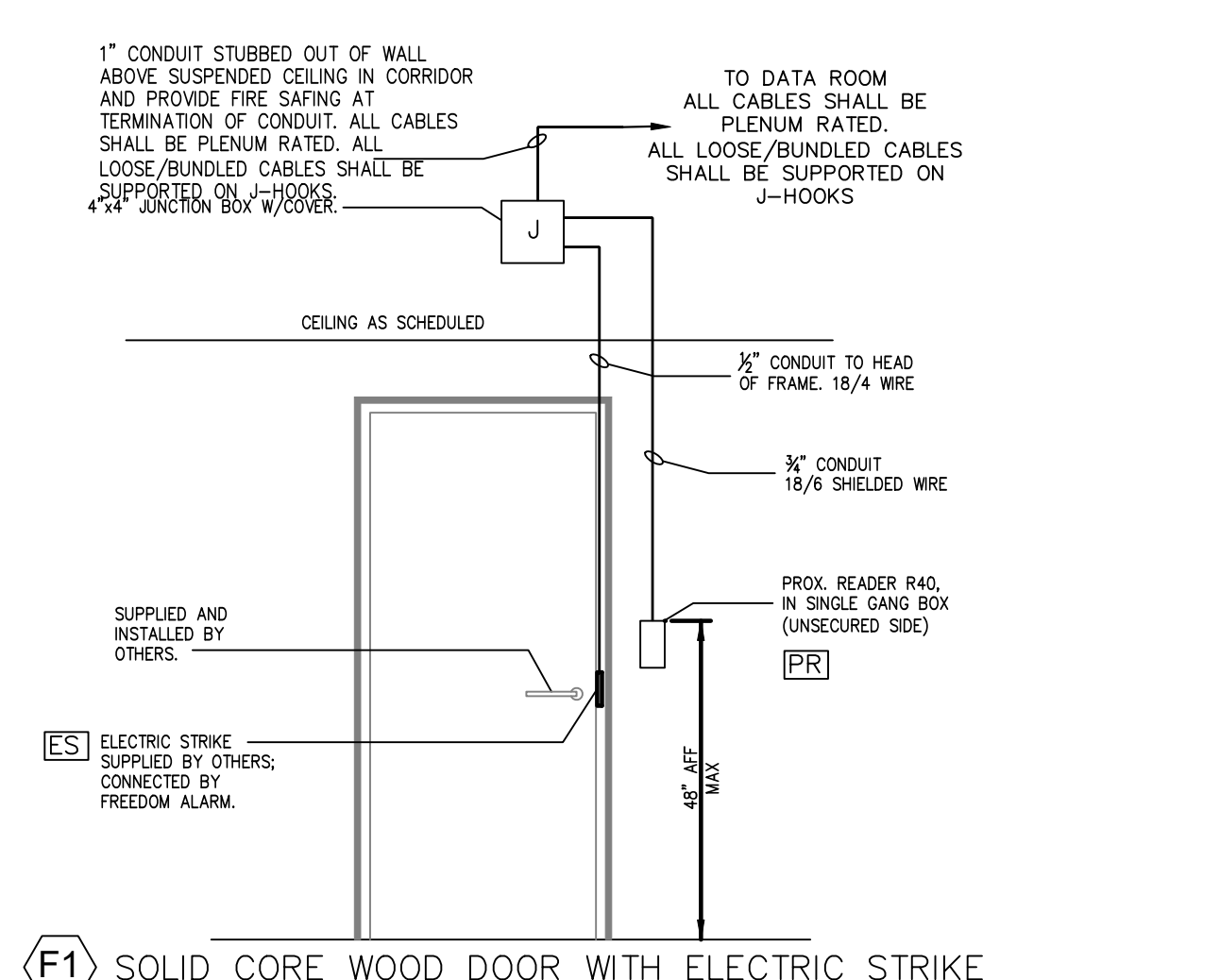
E1 PAIR OF ALUMINUM DOORS

Door	R40 PR	R10 PR	MS	DP
1009A	1	0	1	2
1221A	0	1	1	2



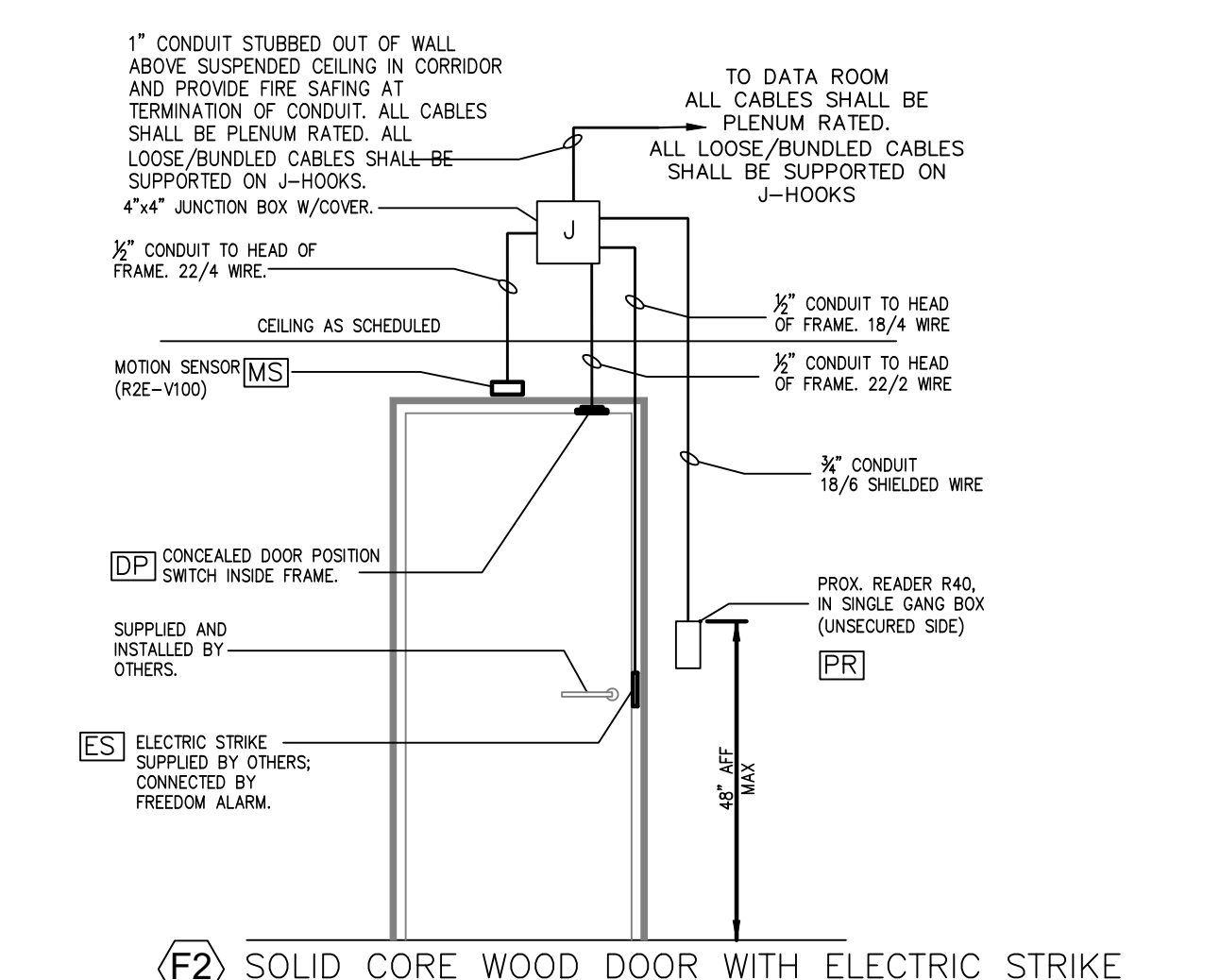
E2 PAIR OF ALUMINUM DOORS WITH CONTROLLER

Door	R40 PR	R10 PR	MS	DP	EH
1201B	1	0	1	2	QC8
1330	1	0	1	2	QC8
1314B	1	0	0	2	ETW6



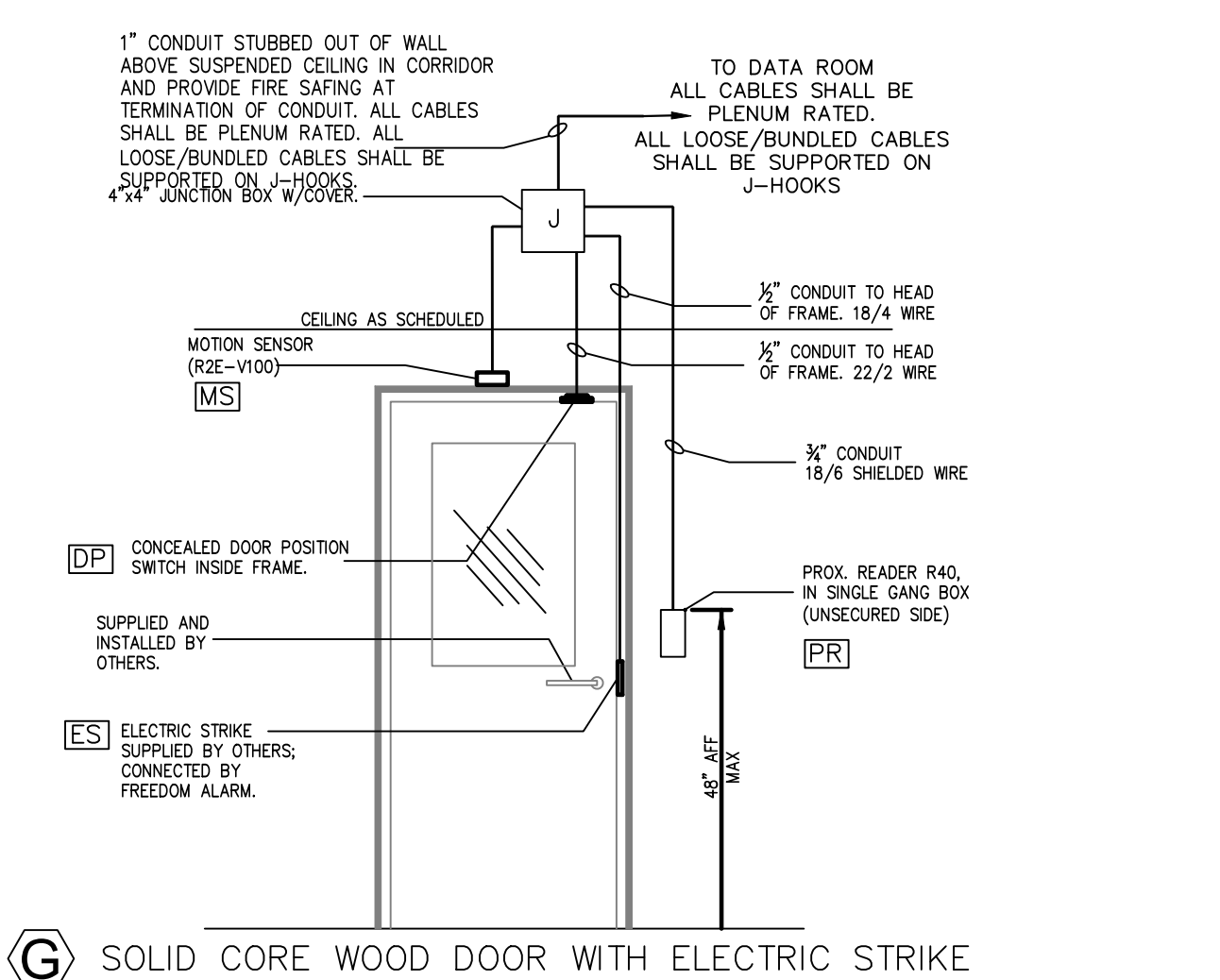
F1 SOLID CORE WOOD DOOR WITH ELECTRIC STRIKE

Door	R40 PR	R10 PR	MS	DP
ALL	1	0	0	0
1219	2218	2439	3234	4251A
1222	2223A	2440	3236B	4251B
1312A	2223B	2441	3247A	4252
1313	2227	2446	3247B	5008
1325	2229	2452	3249	5009B
1327	2230	2454	3251A	5236
2001B	2232	2450	3251B	5240
2011B	2239	2466	3252	5243A
2012	2257	2467	4201	5243B
2012A	2258	2516	4201C	5246A
2015A	2300	2517	4234A	5246B
2019	2309	2517A	4234B	5255A
2021	2313A	2519	4236A	5255B
2022	2403	2627	4236B	5258A
2025	2435B	2629A	4247A	5258B
2030A	2436B	2629B	4247B	5259A
2100	2437B	3011A	4249A	5259B
2215	2438B	3236A	4249B	5260
2215A				



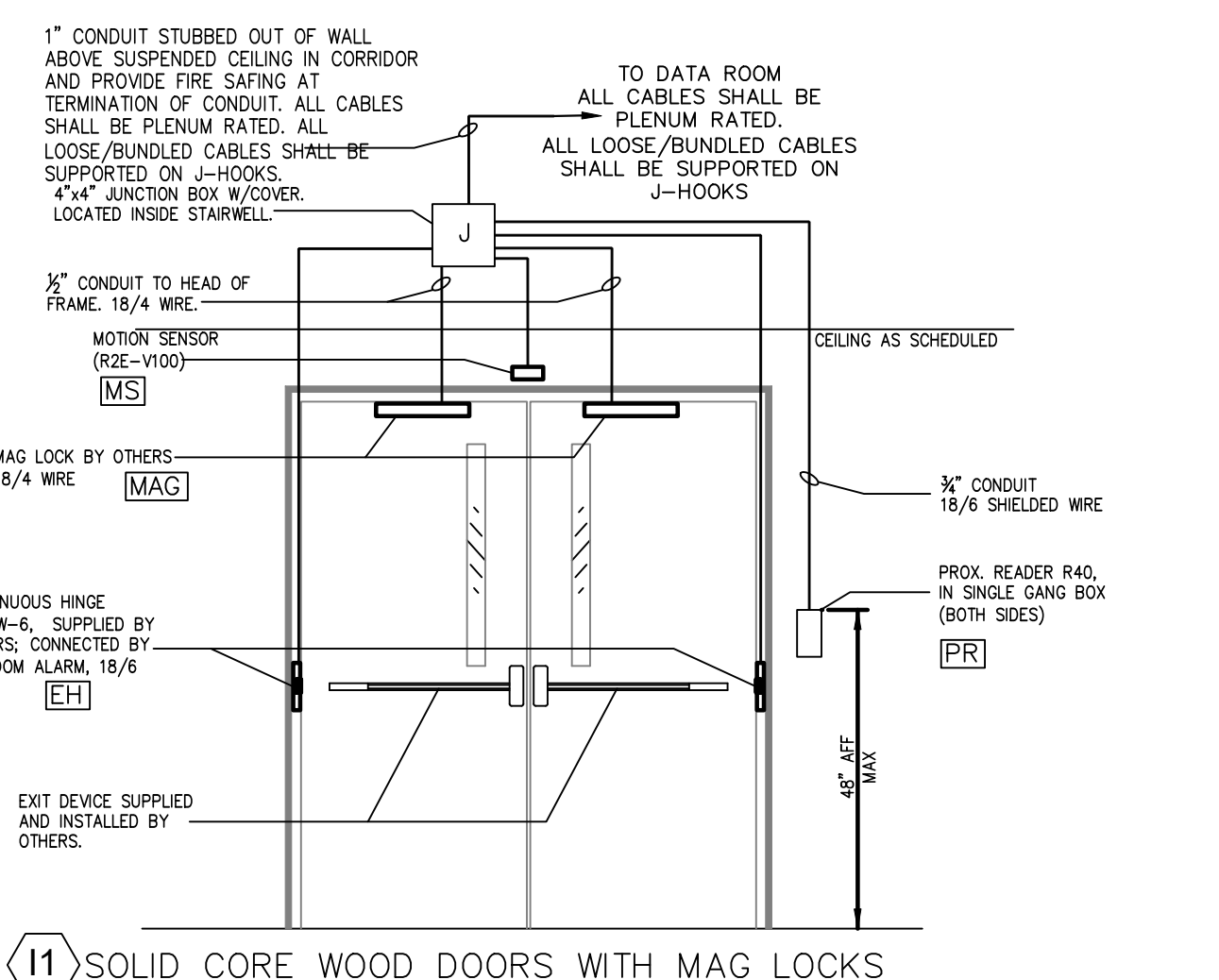
F2 SOLID CORE WOOD DOOR WITH ELECTRIC STRIKE

Door	R40 PR	R10 PR	MS	DP
1323	1	0	1	1
2234A	1	0	1	1
2250	1	0	1	1
2470	1	0	1	1
3231	1	0	1	1
4231	1	0	1	1
5241	1	0	1	1



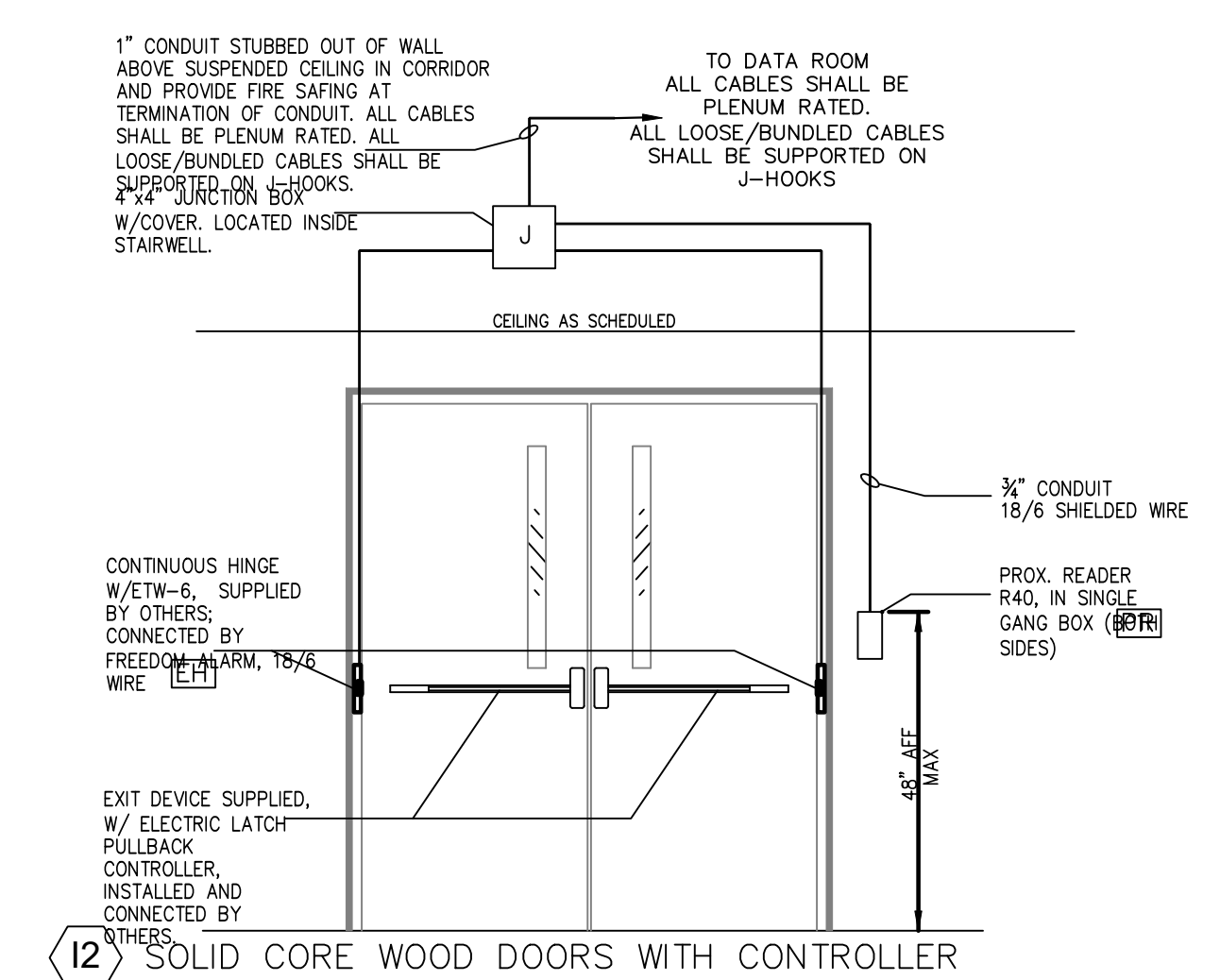
G SOLID CORE WOOD DOOR WITH ELECTRIC STRIKE

Door	R40 PR	R10 PR	MS	DP
2221	1	0	0	0
2224	1	0	0	0
3232	1	0	0	0
3246	1	0	1	1
3250	1	0	0	0
4246	1	0	1	1
5244	1	0	0	0
5254	1	0	1	1
5257	1	0	0	0



H1 SOLID CORE WOOD DOORS WITH MAG LOCKS

Door	R40 PR	R10 PR	MS	DP	EH
2020A	2	0	0	0	ETW6
2515	1	0	1	0	ETW6
2631	1	0	1	0	ETW6
SDS-001	1	0	1	0	ETW6
SDS-002	1	0	1	0	ETW6



H2 SOLID CORE WOOD DOORS WITH CONTROLLER

Door	R40 PR	R10 PR	MS	DP	EH
1205	1	0	0	0	ETW6
1206	1	0	0	0	ETW6
1214	2	0	0	0	ETW6
1221	1	0	0	0	ETW6
1314A	1	0	0	0	ETW6
2003A	2	0	0	0	ETW6
2024	2	0	0	0	ETW6
2204	1	0	0	0	ETW6
2217	2	0	0	0	ETW6
2228	1	0	0	0	ETW6
2310	2	0	0	0	ETW6
2427	2	0	0	0	ETW6
2520B	1	0	0	0	ETW6
2622	1	0	0	0	ETW6
3014A	2	0	0	0	ETW6
3401A	1	0	0	0	ETW6
3500E	2	0	0	0	QC8
3600B	2	0	0	0	QC8
4014A	2	0	0	0	ETW6

REV: #1- 8/10/2012

SCALE:

JOB #: 2135

DATE:

SHEET: 5/4/2012

SEC 0.1

OF 17