

10'W X 5' H X 12"D  
SIGN BY OTHERS

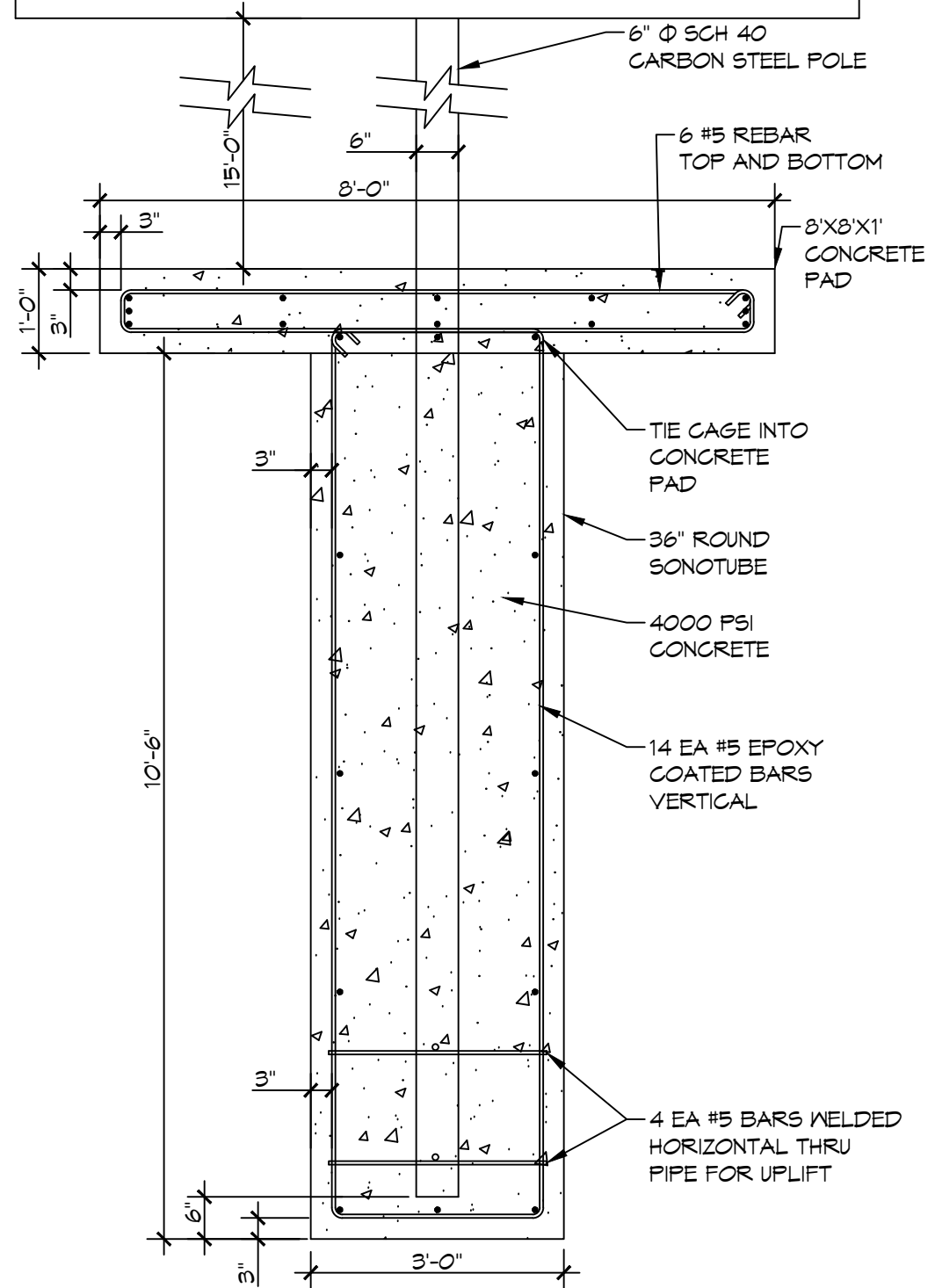
### DESIGN CRITERIA

THE CONSTRUCTION FOR SAID POLE SIGN, WIND SPEED IS 150 MILES PER HOUR, WIND EXPOSURE ZONE B.

### NOTES

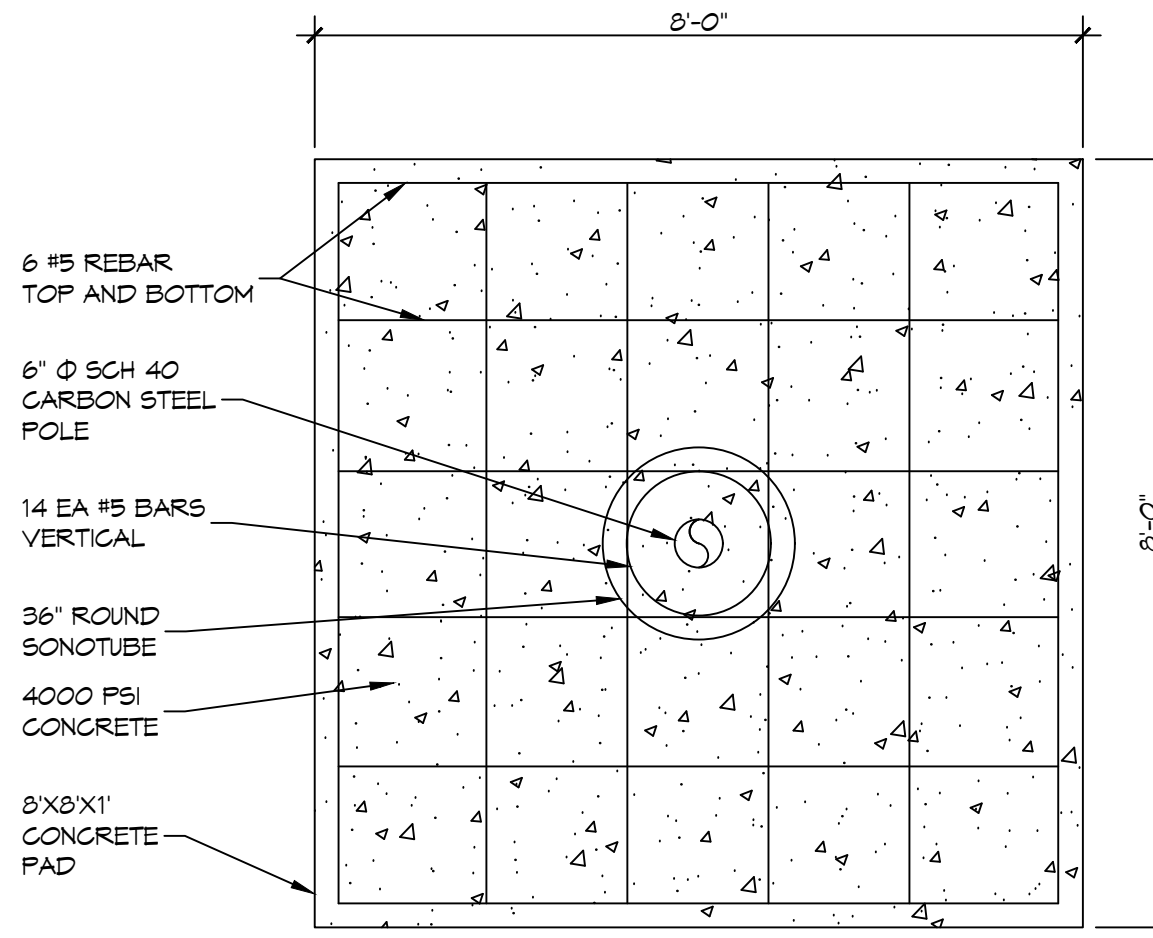
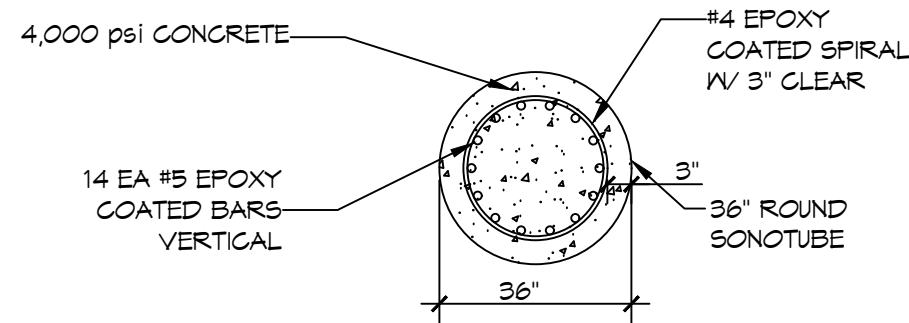
1. ALL CONVENTIONAL REINFORCING STEEL SHALL MEET ASTM-A615 (GRADE 60)
2. DO NOT WELD ON REINFORCING STEEL. SECURELY CROSS-TIE THE VERTICAL AND SPIRAL REINFORCEMENT WITH DOUBLE WIRE. SUPPORT OR HOLD DOWN THE CAGE SO THAT THE VERTICAL DISPLACEMENT DURING CONCRETE PLACEMENT AND CASING EXTRACTION DOES NOT EXCEED 6 IN.

**DAMMON**  
ENGINEERING, INC.  
LOUISIANA & MISSISSIPPI  
www.dammonengineering.com  
info@dammonengineering.com  
PH: 985.640.5832  
Chief Engineer: Brian Mistich, PE  
554 Old Spanish Trail  
Slidell, LA 70458



**1 POLE FOUNDATION PLAN**  
SCALE: 1/2" = 1'-0"

SECTION



**2 FOUNDATION PLAN**  
SCALE: 1/2" = 1'-0"

PLAN

NO.	DESCRIPTION	DATE



SIGN FOUNDATION  
**WAVELAND LANDSCAPING  
SUPPLY CO.**  
JOB No: 2025 | DATE: 08-07-2025  
DRAWN BY: BAY | CHECKED BY: C&D

SHEET TITLE:  
**POLE FOUNDATION**  
DRAWING NUMBER:  
**SK-1**  
SHEET No: 1 of 1