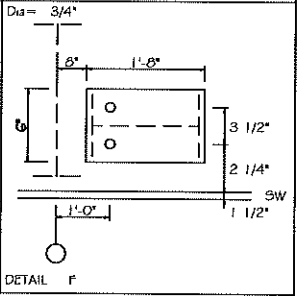
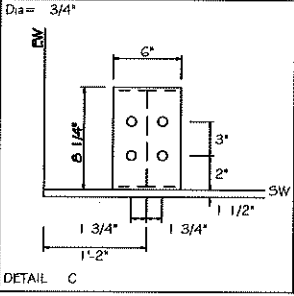
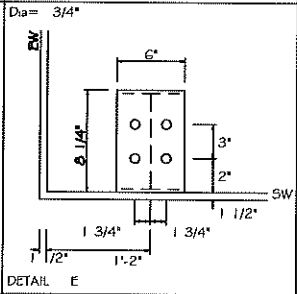
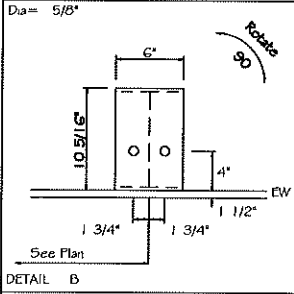
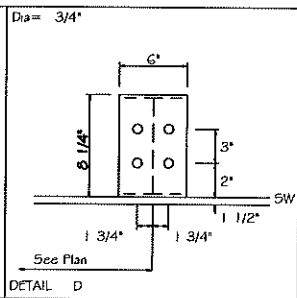
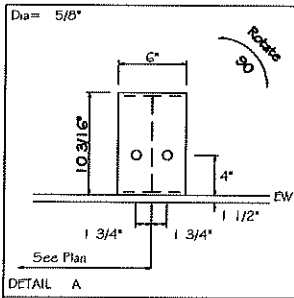


ANCHOR BOLT PLAN
 NOTE: All Base Plates @ 100'-0" (0.11.)

NOT
 for
 Construction



NOTES FOR REACTIONS

Building reactions are based on the following building data:

- Width (ft) = 90.0
- Length (ft) = 75.8
- Eave Height (ft) = 14.0/ 14.0
- Roof Slope (rise/run) = 6.00/ 6.00
- Roof Dead Load (psf) = 2.5
- Wall Dead Load (psf) = 5.0
- Left Endwall (psf) = 5.0
- Right Endwall (psf) = 5.0
- Front SideWall (psf) = 5.0
- Back SideWall (psf) = 5.0
- Roof Live Load (psf) = 20.0
- Frame Live Load (psf) = 12.0
- Collateral Load (psf) = 4.0
- Wind Speed (mph) = 139.0
- Wind Code = IBC 21
- Exposure = B
- Closure = Enclosed
- Internal Wind Coeff = -0.18, +0.18
- Risk Category = III - High
- Importance - Wind = 1.00
- Importance - Seismic = 1.25
- Seismic Design Category = B
- Seismic Coeff = 0.14

ANCHOR BOLT SUMMARY

Qty	Locate	Di (in)	Type
0	Endwall	5/8"	
0	Frame	3/4"	
0	WindCol	3/4"	

BUILDING BRACING REACTIONS

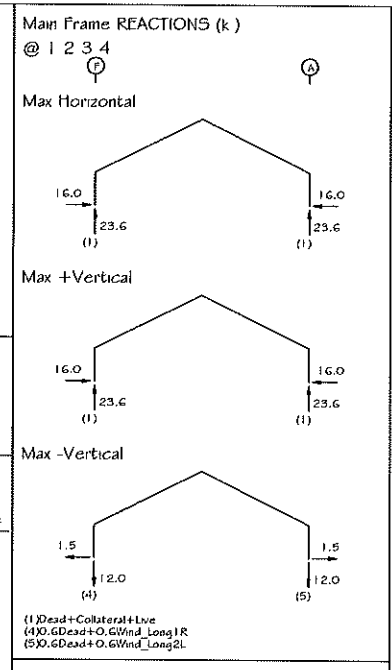
Wall Loc	Line	+ Reactions (k)				Panel Shear (k/ft)		Note
		Wind Horz	Seismic Vert	Wind Vert	Seis			
L_EW	1							(b)
F_SW	A	2,3						(a)
R_EW	4							(b)
B_SW	F	2,3						(a)

(a) Wind bent in bay
(b) Rigid frame at endwall

Reactions for seismic represent shear force, Eh
Reaction values shown are unfactored

WIND BENT REACTIONS

Wall Loc	Line	Col Line	+ Reactions (k)			
			Wind Horz	Seismic Vert	Wind Vert	Seis
F_SW	A	2	6.1	7.1	0.7	0.9
F_SW	A	3	6.1	7.1	0.7	0.9
B_SW	F	3	6.1	7.1	0.7	0.9
B_SW	F	2	6.1	7.1	0.7	0.9



ENDWALL COLUMN REACTIONS (k)

Frame Line	Col Line	Max Horz	Max +Vert	Max -Vert	Vert	Horz	Id
4	C	4.9	0.8	0.0	0.5	0.0	(7)
4	C	0.8	0.0	0.0	0.0	0.0	(5)
4	E	0.0	0.0	0.0	0.0	0.0	(a)

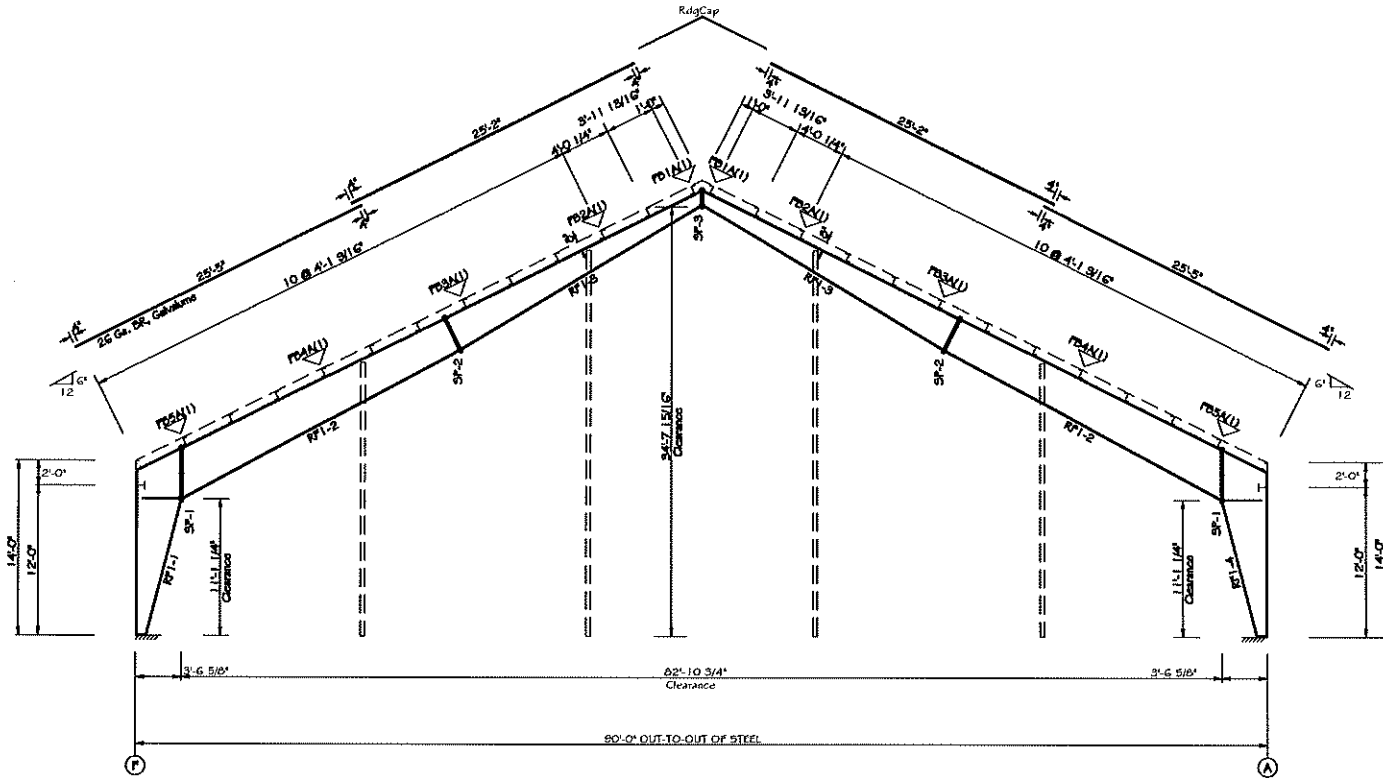
(a) Load combinations do not produce a max for this direction
(5) 1.01 Dead + 1.01 Collateral + 0.53 Seismic Right
(7) 0.6 Dead + 0.6 Wind_Right2 + 0.6 Wind_Suction

NOT
for
Construction

SPLICE PLATE & BOLT TABLE									
Mark	Qty		Int	Type	Dia	Length	Width	Thick	Length
	Top	Bot							
SP-1	4	4	2	A325	0.750	2.00	6"	1/2"	4'-6 3/4"
SP-2	4	4	0	A325	0.750	2.00	6"	1/2"	3'-3 3/4"
SP-3	4	4	0	A325	0.750	2.00	6"	1/2"	1'-8"

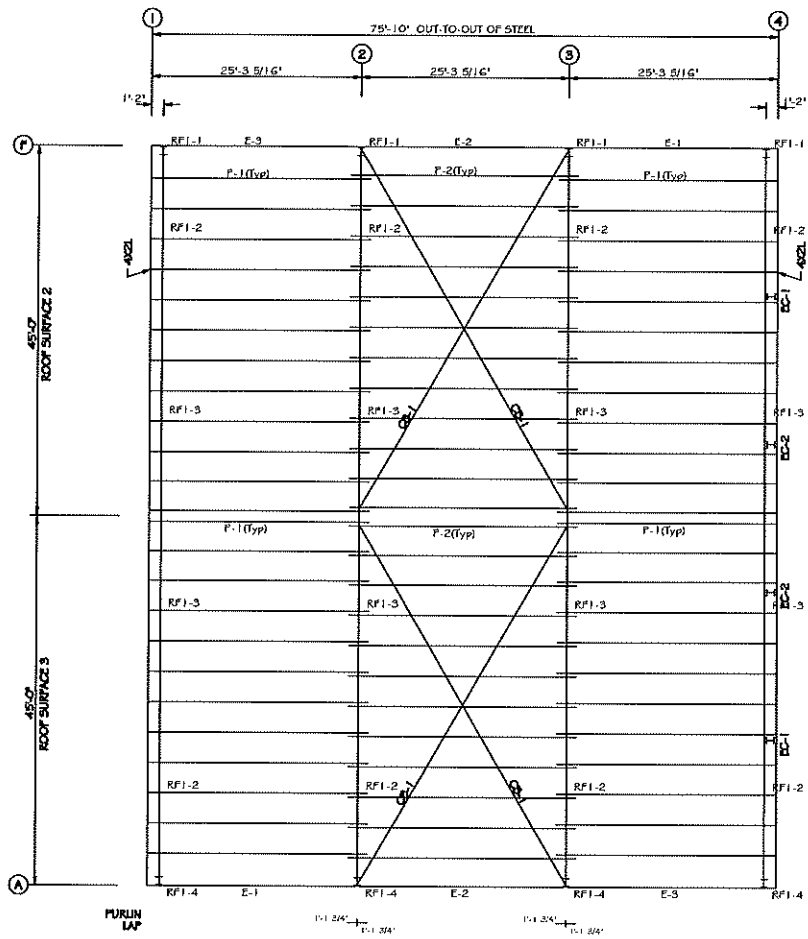
MEMBER TABLE							
Mark	Web Depth		Web Plate		Outside Flange		Inside Flange
	Start/End	Thick	Length	Thick	W x Thk x Length	W x Thk x Length	
RF1-1	7.5/42.0	0.188	179.4		6 x 1/4" x 158.3	6 x 3/8" x 133.2	
RF1-2	42.0/34.1	0.188	238.0		6 x 1/4" x 47.1	6 x 1/4" x 240.0	
RF1-3	34.1/32.0	0.188	62.0		6 x 1/4" x 38.9	6 x 1/4" x 60.2	
RF1-4	32.0/13.4	0.135	238.0		6 x 1/4" x 240.0	6 x 1/4" x 240.0	
RF1-3	13.4/11.0	0.135	36.8		6 x 1/4" x 34.8	6 x 1/4" x 30.0	
RF1-4	42.0/7.5	0.188	179.4		6 x 1/4" x 47.1	6 x 3/8" x 133.2	

▽ FLANGE BRACES: Both Sides(U.N.)
 FBxx(A1)
 A - L2X2X18



BUILDING CROSS SECTION: FRAME LINE 1 2 3 4

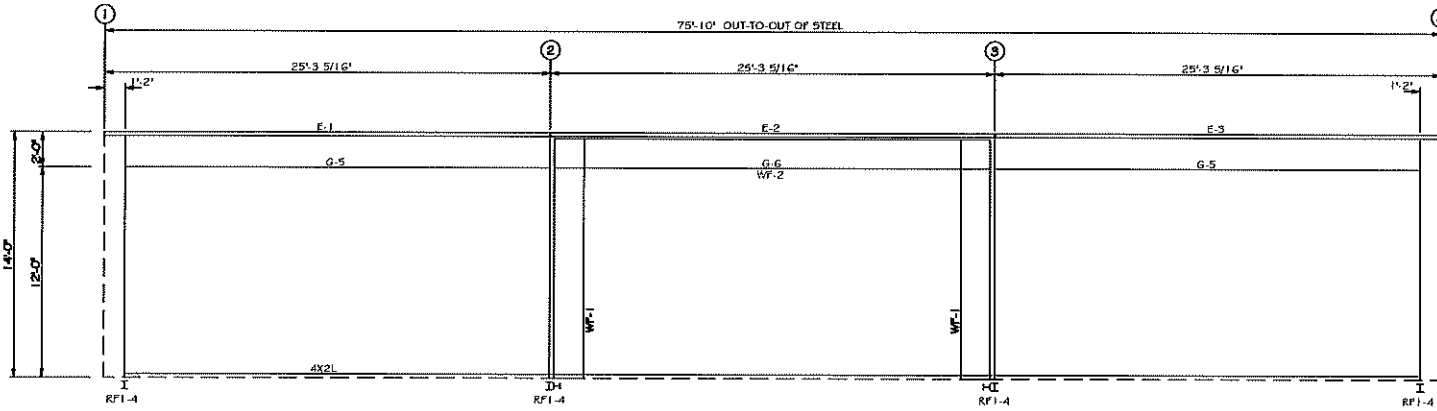
NOT
for
Construction



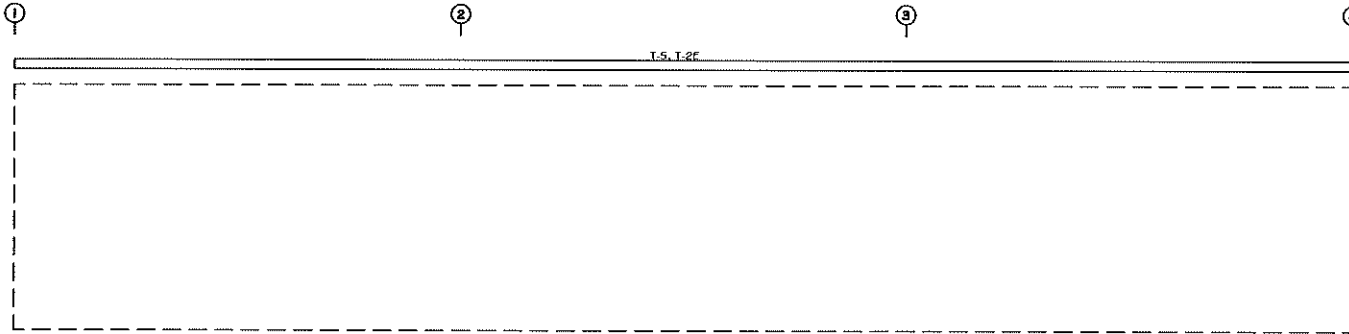
ROOF FRAMING PLAN

MEMBER TABLE		
ROOF PLAN		
MARK	PART	LENGTH
P-1	8X25Z14	26'-4 13/16"
P-2	8X25Z14	27'-6 13/16"
E-1	8E514	25'-2 13/16"
E-2	8E514	25'-2 13/16"
E-3	8E514	25'-2 13/16"
CB-1	3/8 Cab	55'-3"

NOT
for
Construction



SIDEWALL FRAMING: FRAME LINE A

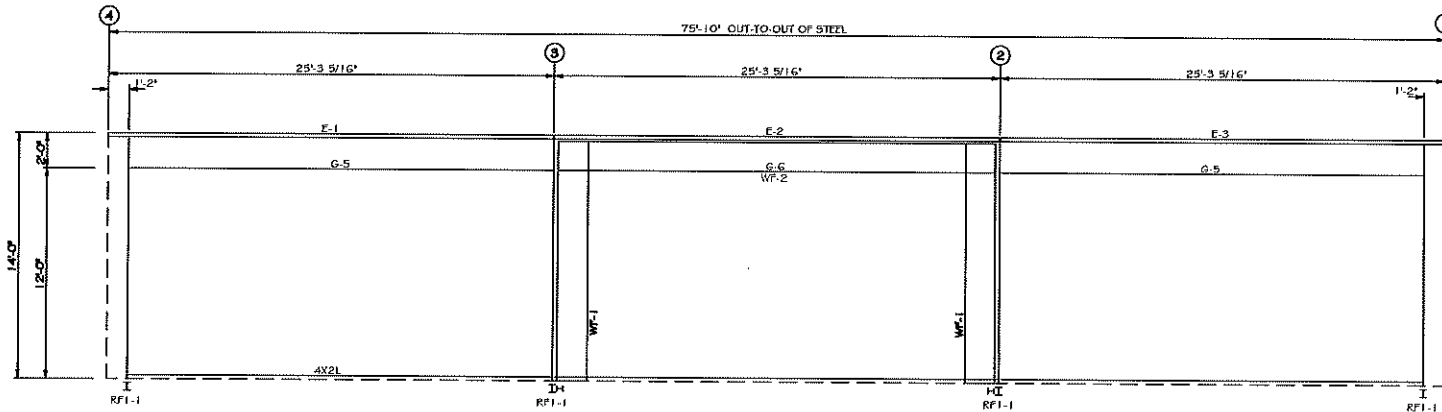


SIDEWALL SHEETING & TRIM: FRAME LINE A

BOLT TABLE				
FRAME LINE A				
LOCATION	QUAN	TYPE	DIA	LENGTH
WF-1 - WF-2	4	A325	3/4"	2"
WF-1 - RF1-4	4	A307		

MEMBER TABLE		
FRAME LINE A		
MARK	PART	LENGTH
WF-1	W20G41	13'-11"
WF-2	W20G41	20'-6 13/16"
E-1	8E514	25'-2 13/16"
E-2	8E514	25'-2 13/16"
E-3	8E514	25'-2 13/16"
G-5	W8x18	23'-4 13/16"
G-6	W8x18	20'-6 13/16"

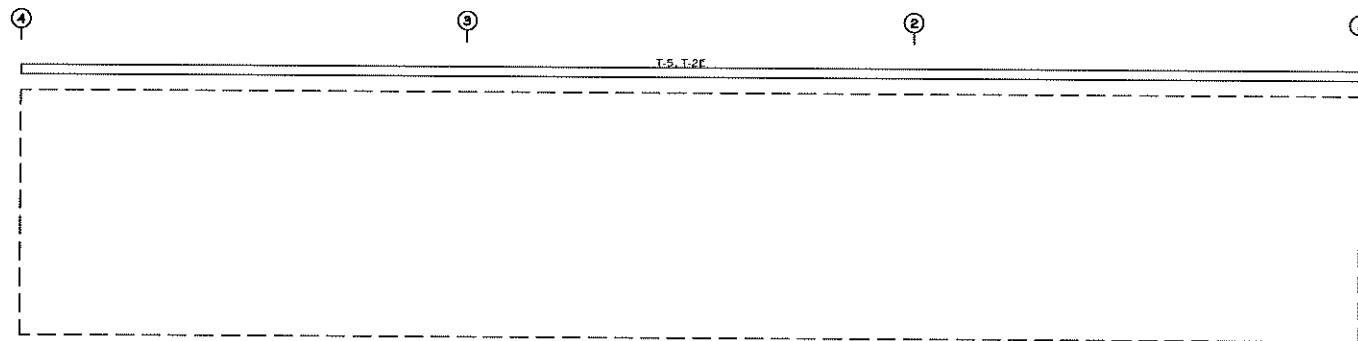
NOT
for
Construction



SIDEWALL FRAMING: FRAME LINE F

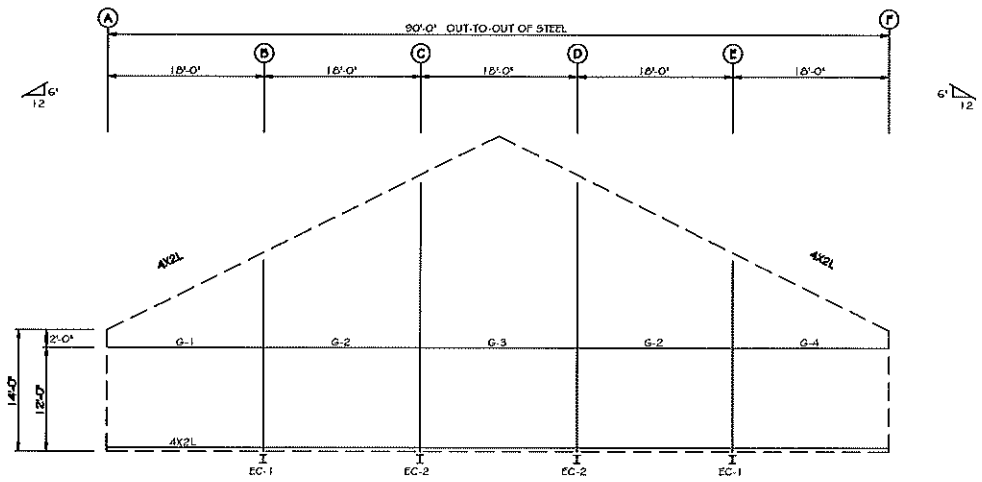
BOLT TABLE				
FRAME LINE F				
LOCATION	QUAN	TYPE	DIA	LENGTH
WF-1 - WF-2	4	A325	3/4"	2"
WF-1 - RF1-1	4	A307		

MEMBER TABLE		
FRAME LINE F		
MARK	PART	LENGTH
WF-1	W20G41	13'-1 1/2"
WF-2	W20G41	20'-6 13/16"
E-1	ØES14	25'-2 13/16"
E-2	ØES14	25'-2 13/16"
E-3	ØES14	25'-2 13/16"
G-5	W8x18	23'-4 13/16"
G-6	W8x18	20'-6 13/16"

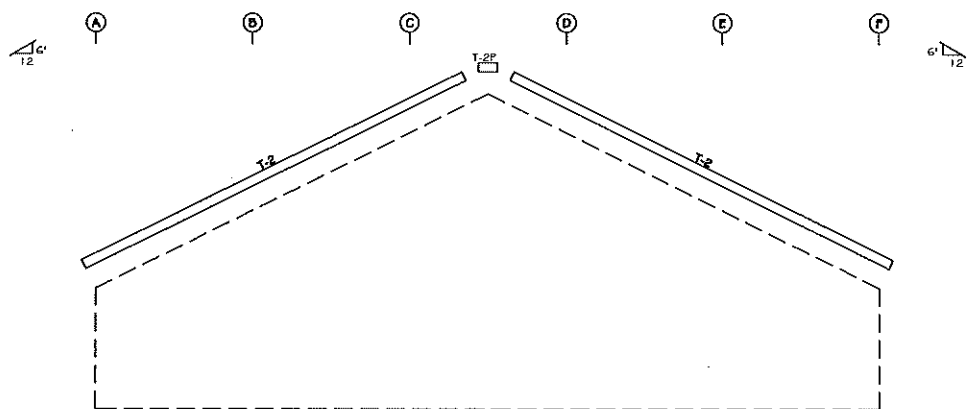


SIDEWALL SHEETING & TRIM: FRAME LINE F

NOT
for
Construction



ENDWALL FRAMING: FRAME LINE 4



ENDWALL SHEETING & TRIM: FRAME LINE 4

BOLT TABLE			
FRAME LINE 4			
LOCATION	QUAN	TYPE	DIA
Columns/Raf	10	A325	5/8"
			1 1/2"

MEMBER TABLE		
FRAME LINE 4		
MARK	PART	LENGTH
EC-1	W10x22	22'-0 9/16"
EC-2	W10x26	31'-0 9/16"
G-1	W8x15	17'-8"
G-2	W8x15	17'-4 1/2"
G-3	W8x18	17'-4 1/2"
G-4	W8x15	17'-8"

NOT
for
Construction