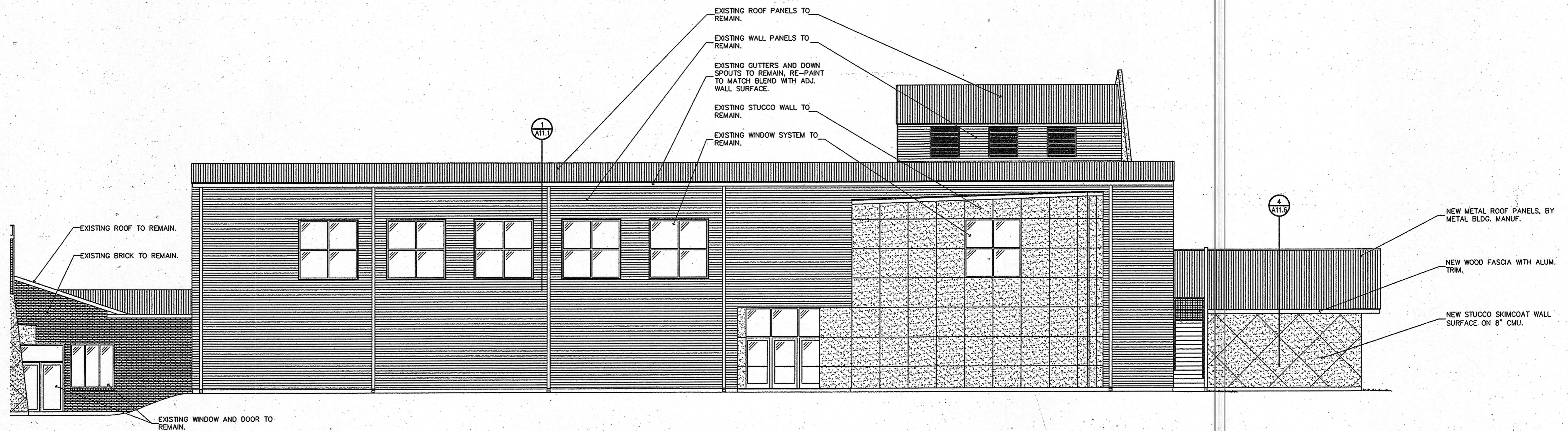
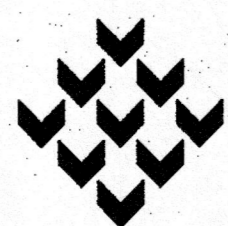


**1. PROPOSED PARTIAL FRONT ELEVATION**  
 SCALE: 1/8" = 1'-0"  
 (FACING EXISTING PAVED PARKING LOT AREA)



**2. PROPOSED PARTIAL FRONT ELEVATION**  
 SCALE: 1/8" = 1'-0"  
 (FACING EXISTING PAVED PARKING LOT AREA)

project 1403  
 date 1-17-05  
 revisions



**Piazza Architecture • Planning**  
 Mandeville • Louisiana • Miramar Beach • Florida



EXPANSION and RENOVATION TO:  
**CROSSGATES ATHLETIC CLUB**  
 200 NORTH MILITARY ROAD  
 SLIDELL - LOUISIANA

sheet  
**A10.4**  
 of 68