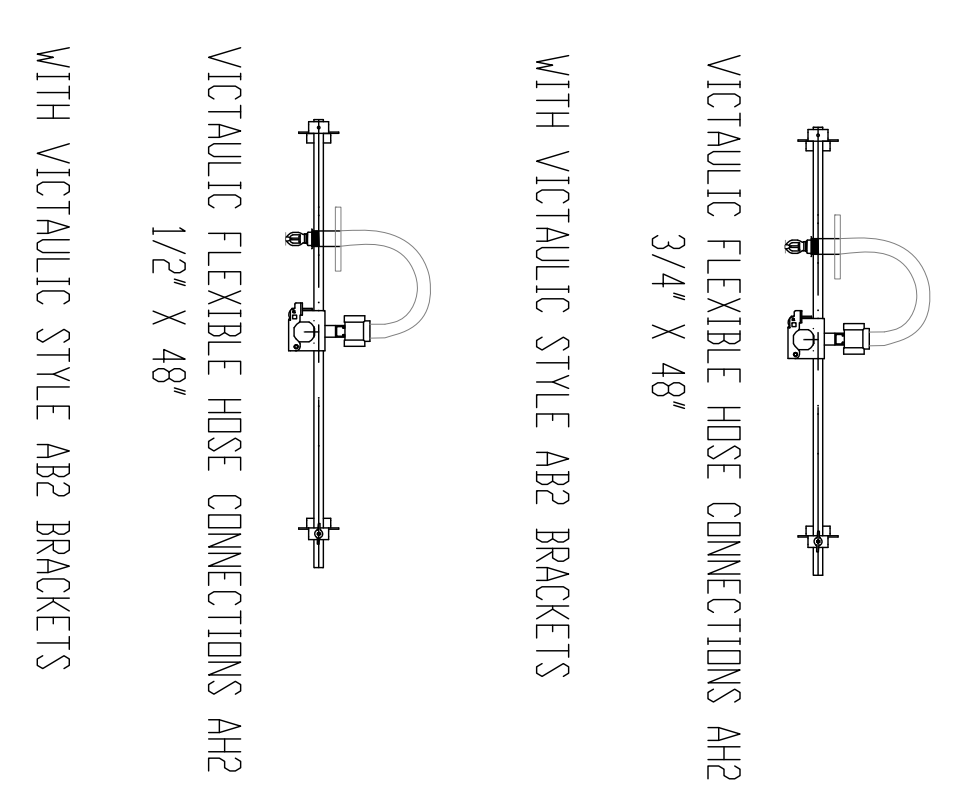
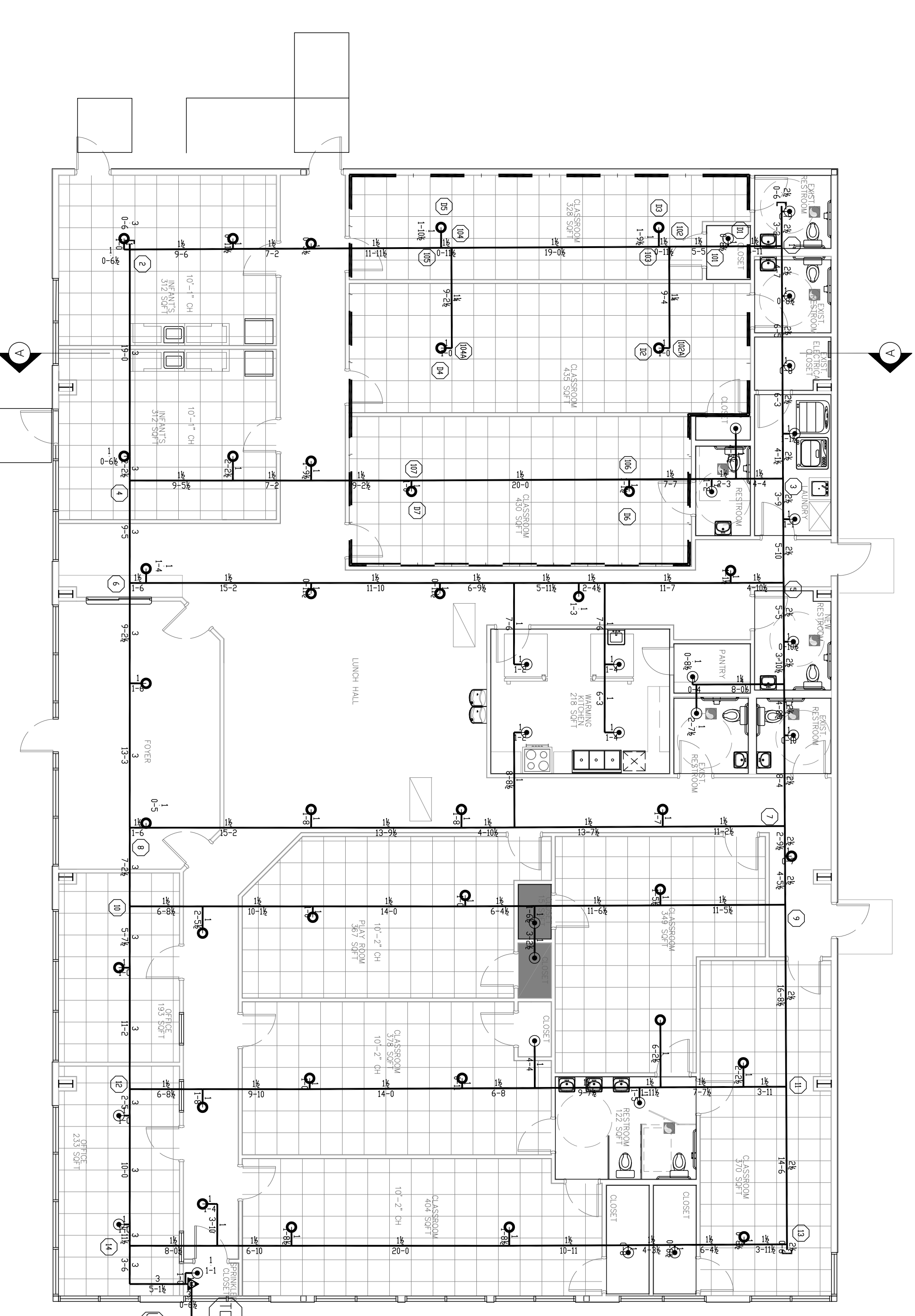


FLOW TEST DATA
 BY: JEFFERSON SPRINKLER, INC
 DATE: JANUARY 15, 2026
 TIME: 9:10 AM
 STATIC: 62 PSI
 RESIDUAL: 57 PSI
 FLOW: 950 GPM
ELEVATION OF TEST HYDRANT: 1'-0" AFF



NOTE:
 SITE PALE IS SHOWN FOR HYDRAULIC REFERENCE ONLY
 NOT TO BE USED FOR INDICATION OF SIDE REEFER

HYDRAULIC - SYSTEM	
This Building is Protected by a Hydraulically Designed Automatic Sprinkler System	
Location	CLASSROOMS
No. of Sprinklers	64
Basis of Design	10/1788 SF
1. Density	0.10/1788 SF
2. Designated Area of Discharge	7 SHRINKERS
System Demand	
1. Water Flow Rate	377.508 GPM
2. Retard of the	51.811 PSI
3. Base of Rise	100 GPM
4. Occupancy Classification	LIGHT HAZARD
5. Commodity Classification	
6. Maximum Storage Height	



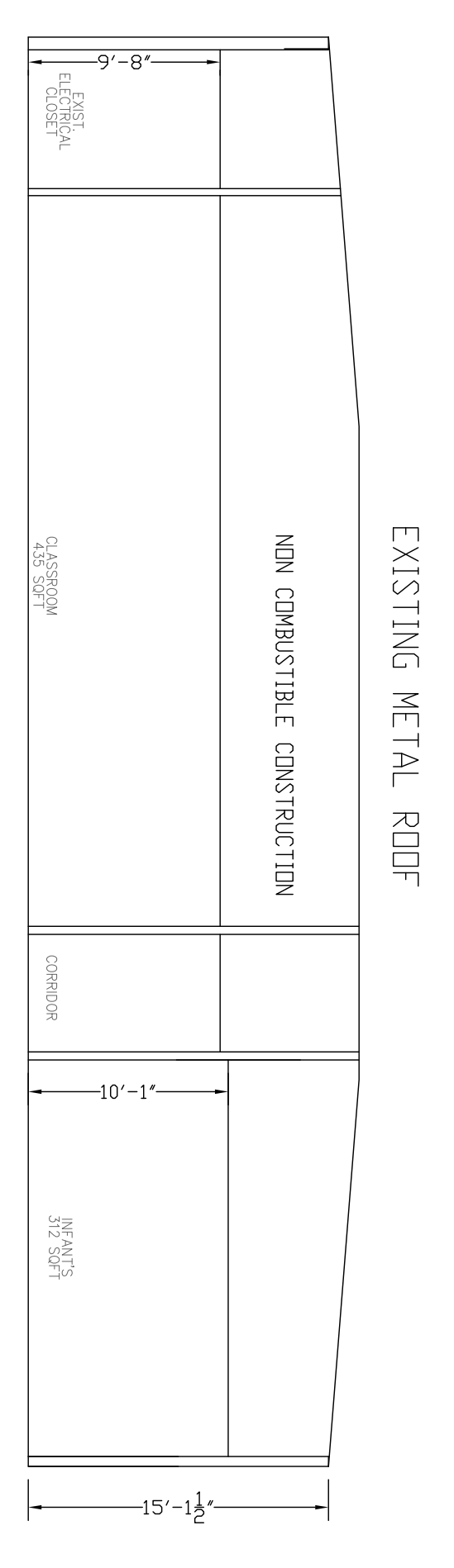
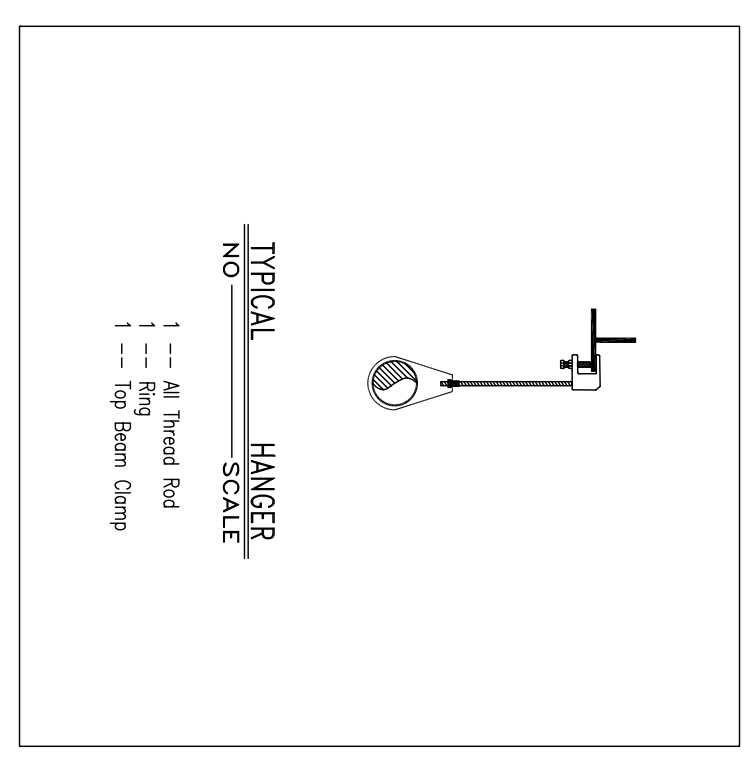
SPRINKLER PLAN
 SCALE: 3/8"=1'-0"

HANGER NOTES:

- STEEL PIPE:**
1. HANGER SUPPORTING END SPRINKLER SHALL PREVENT UPWARD MOVEMENT.
 2. 24" MAX. UNSUPPORTED ARMEDVER
 3. MAX. DISTANCE FROM END SPRK.

MAXIMUM HANGER SPACING:

SIZE	SPACING
1"	12'-0"
1 1/4"	12'-0"
1 1/2"	15'-0"
2"	15'-0"

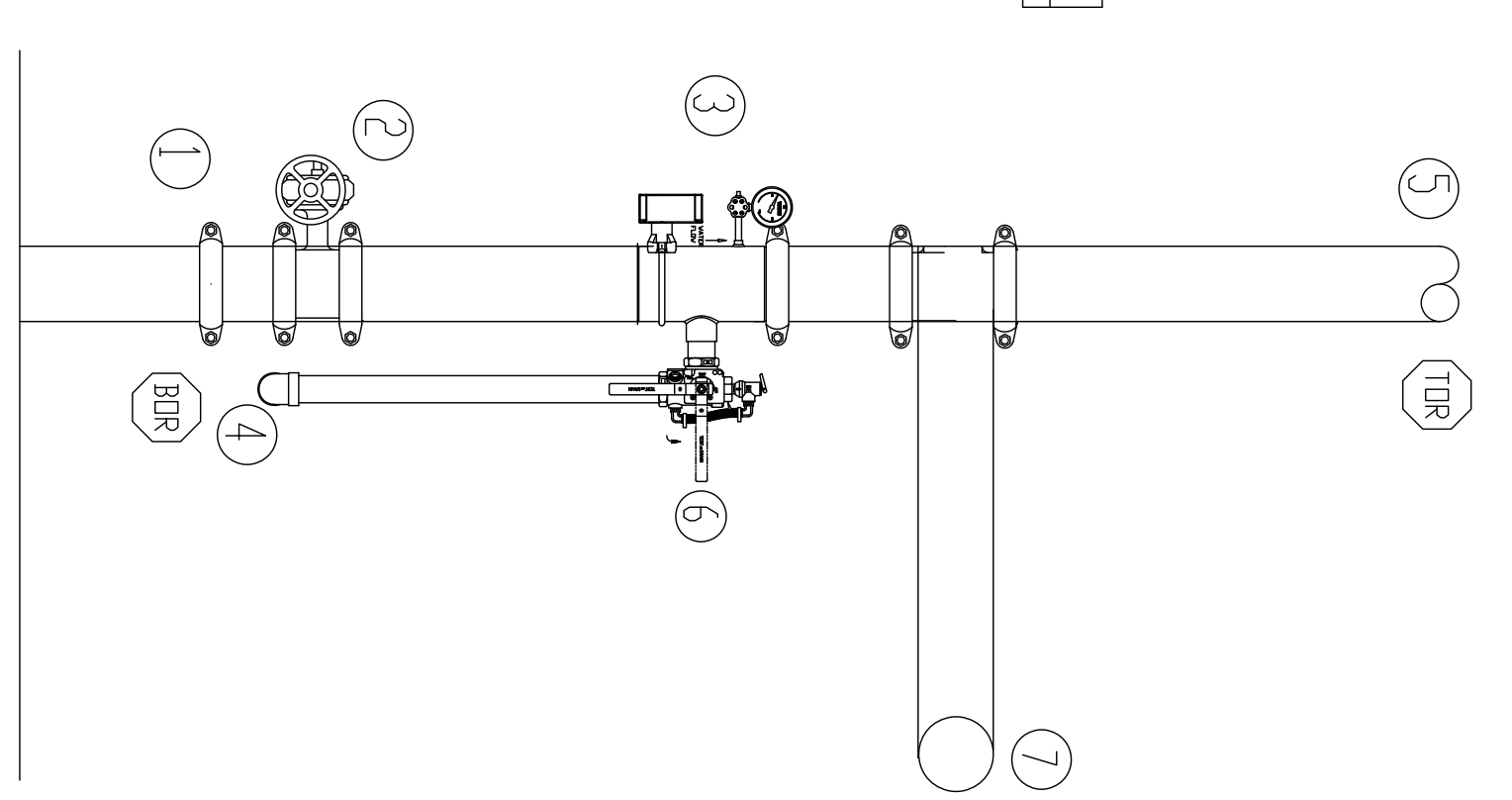


SECTION A
 SCALE: 3/8"=1'-0"

- RISER LEGEND**
- ① - 4" SUPPLY LINE
 - ② - 4" BUTTERFLY VALVE
 - ③ - 4" AGF ULTIMATE RISER
 - ④ - MAIN DRAIN
 - ⑤ - 4" TO SPRINKLER SYSTEM
 - ⑥ - TO INSPECTORS TEST CONNECTION
 - ⑦ - TO FDC & 2 1/2" HOSE VALVE TO TEST BACKFLOW PREVENTER

NOTES:
 -ELECTRIC BELL SHALL BE PROVIDED
 -AS AN AUDIBLE ALARM
 -RISER ROOM TO BE HEATED (BY OTHERS)

RISER DETAIL



JEFFERSON SPRINKLER, INC.
 "Fire Protection Specialist"
 1903 Hancock St. P. O. Box 129 Gretna, La. 70053
 Phone 504-393-7699 Fax 504-387-0216

N

General Notes

1. All Pipe Locations are to be Field Measured Prior to Fabrication and Installation by Sprinkler Contractor.
2. All Dimensions Shown are Center to Center.
3. High Temperature Heads are to be Field Located Where Required.
4. All Pipes and Hangers are to be Installed per NFPA #13.
5. Hangers are to be UL Listed and P.M. Approved.

Symbol	Description	Total This Sheet	Number of Sprinklers
○	Hydraulic Reference Points	64	64
○	Box Above Finished Floor	26 (1/2\"/>	

Revising	By	Date
	S. BRICLAND	2/9/26

Job: **THREE PEAS IN A POD EARLY LEARNING CTR - 2965 GAUSE BLVD SLIDELL, LA 70461**

Contractor: **KB KAUFMANN 3173 E TERRACE AVENUE SLIDELL, LA 70458**

SHEET **1** OF **1**