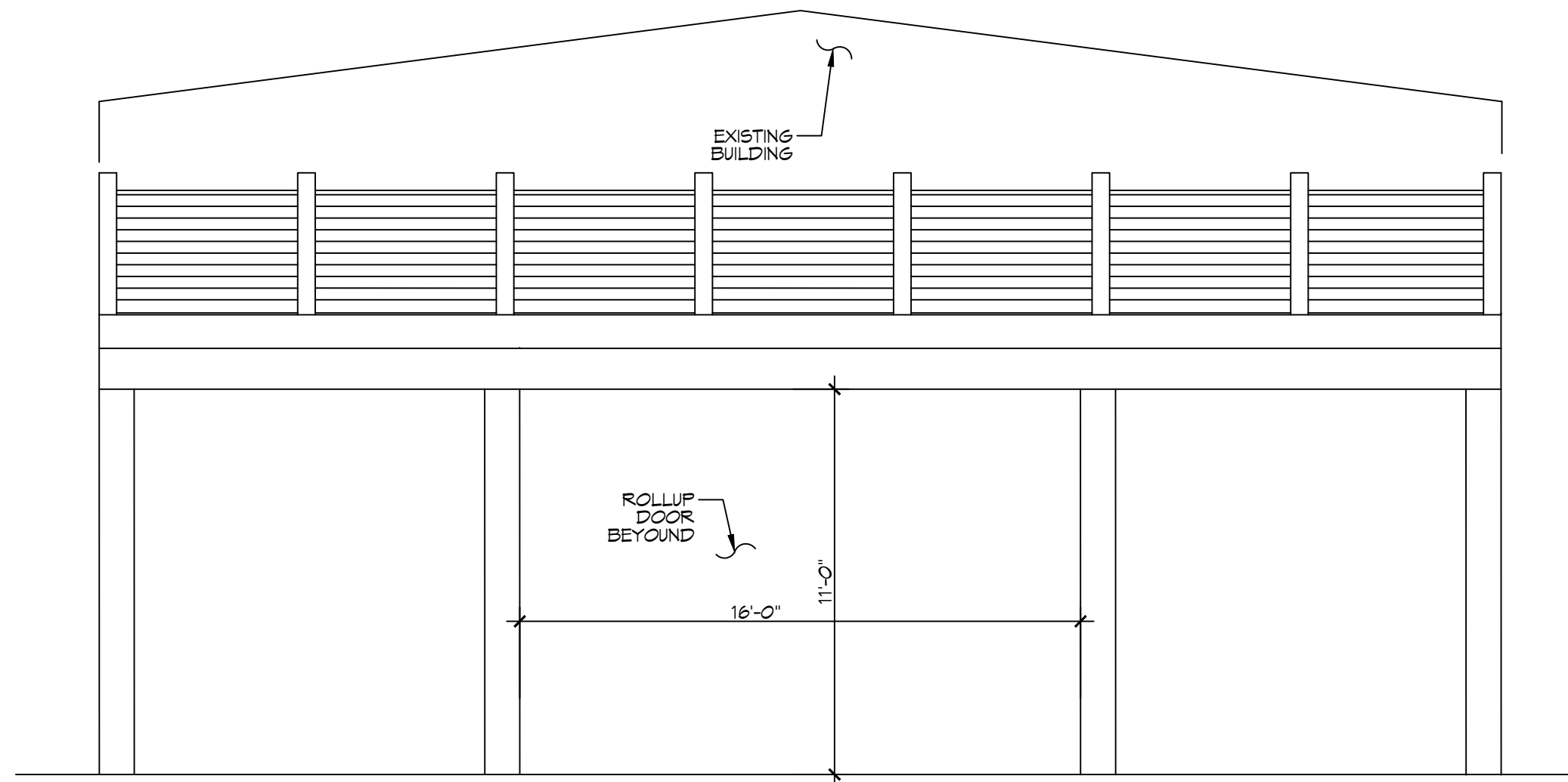
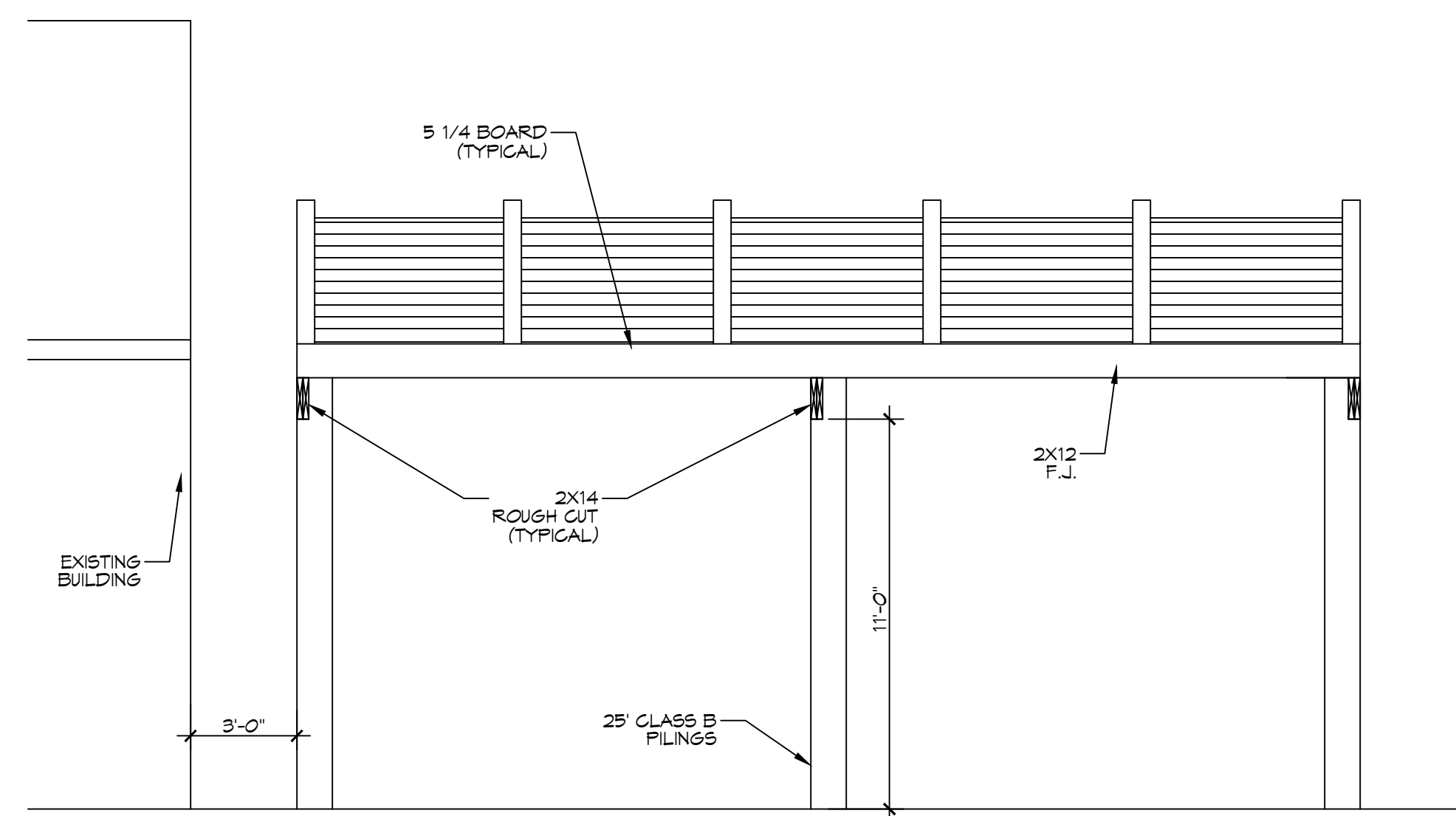


SEE NOTE 11 - MODIFICATIONS OF STANDARD CODES: Code, Notes, Specs, Memo, etc. (See also S101-2 for details)

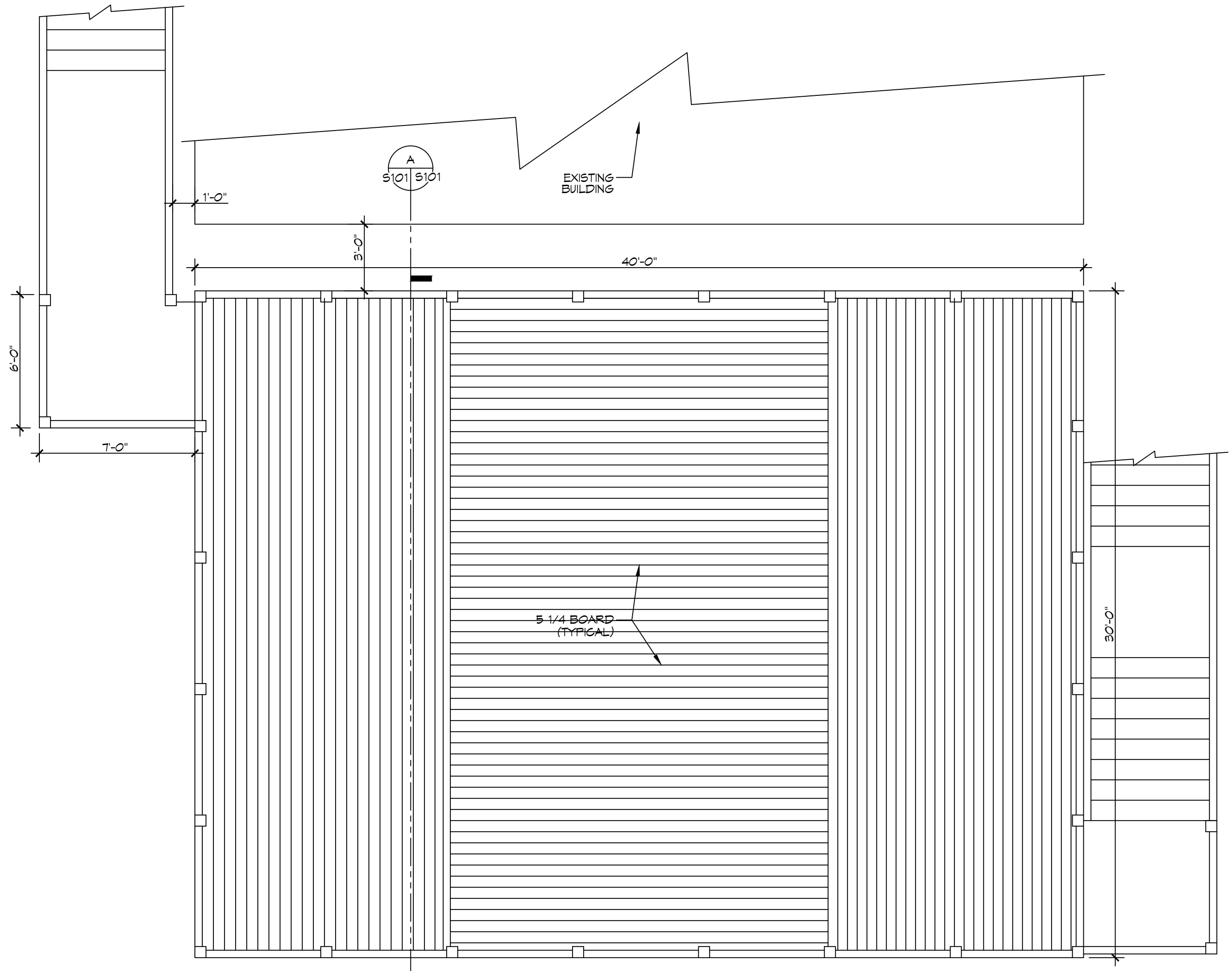
PILING COUNT	GENERAL NOTES	PILING NOTES
12 PILING COUNT	1. ALL LUMBER SHALL BE PRESSURE TREATED WITH A RETENTION OF .4 PER C.F. 2. ALL FASTENERS SHALL BE HOT DIPPED GALVANIZED (HDG) PER ASTM A153. 3. ALL CONNECTORS SHALL BE HDG PER ASTM A653, CLASS G105 SHEET WITH 1.05 OZ/SF ZINC COATING.	1. PILES ARE TO BE CLASS B PRESSURE TREATED 25 FT. IN LENGTH WITH A 8 INCH TIP AND 12" BUTT. 2. ALL PILES SHALL BE DRIVEN TO REFUSAL. 3. CONTRACTOR SHALL DRIVE TEST PILE. 4. NO FIELD SUPERVISION OR INSPECTION PROVIDED UNDER THIS SEAL UNLESS OTHERWISE NOTED. 5. PILE LAYOUT MAY BE MODIFIED DUE TO ACTUAL DRIVING CONDITIONS. ENGINEER TO BE NOTIFIED ON ANY MODIFICATION. 6. A PILE BLOW COUNT LOG OF ALL PILES IS TO BE SUBMITTED TO THE ENGINEER OF RECORD. FAILURE TO SUBMIT SAID LOG WILL RELEASE THE ENGINEER OF ALL RESPONSIBILITY AFTER 5 DAYS OF INSTALLING.



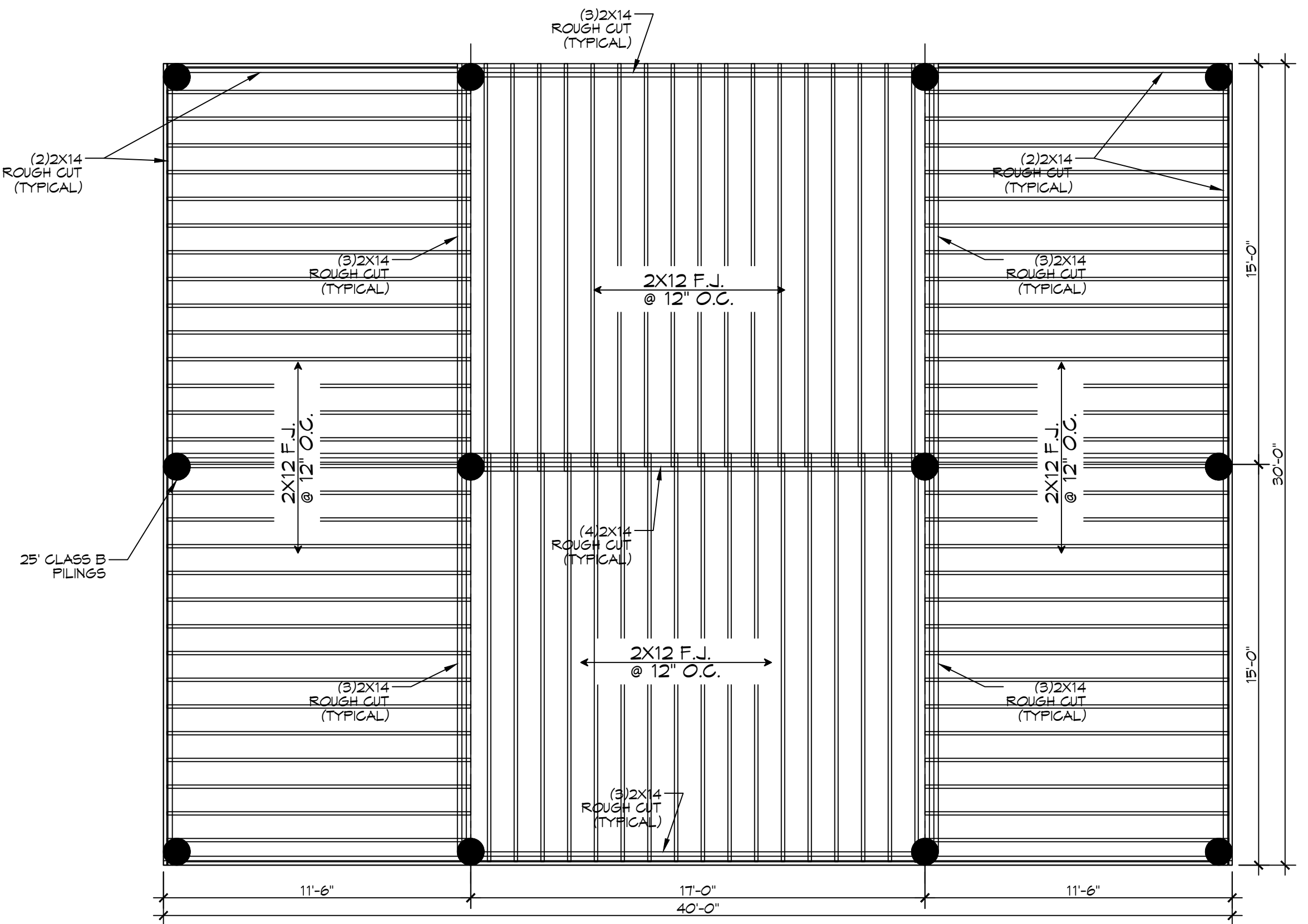
1 OBSERVATION DECK FRONT ELEVATION
SCALE: 1/4" = 1'-0" FRAMING



A FRAMING SECTION
SCALE: 3/4" = 1'-0" DECK



2 OBSERVATION DECK PLAN VIEW
SCALE: 1/4" = 1'-0" FRAMING



3 PILING AND FRAMING PLAN
SCALE: 1/4" = 1'-0" FRAMING

DAMMON
 ENGINEERING, INC.
 LOUISIANA & MISSISSIPPI
 Chief Engineer: Brian Mistich, PE
 554 Old Spanish Trail
 Slidell, LA 70488
 www.dammonengineering.com
 info@dammonengineering.com
 PH: 985.649.5832

#	DESCRIPTION	REVISIONS	DATE

SEAL:

NEW OBSERVATION DECK
FOGGY WATERS MARINA
 56041 LA-489
 BAYOU LIBERTY ROAD
 SLIDELL, LA 70460
 JOB No: 2024
 DATE: 06-11-25
 DRAWN BY: GKD
 CHECKED BY: BAX

SHEET TITLE:
OBSERVATION DECK, PILING
PLAN AND FRAMING PLAN

DRAWING NUMBER:
S101

SHEET No: 3 of 1