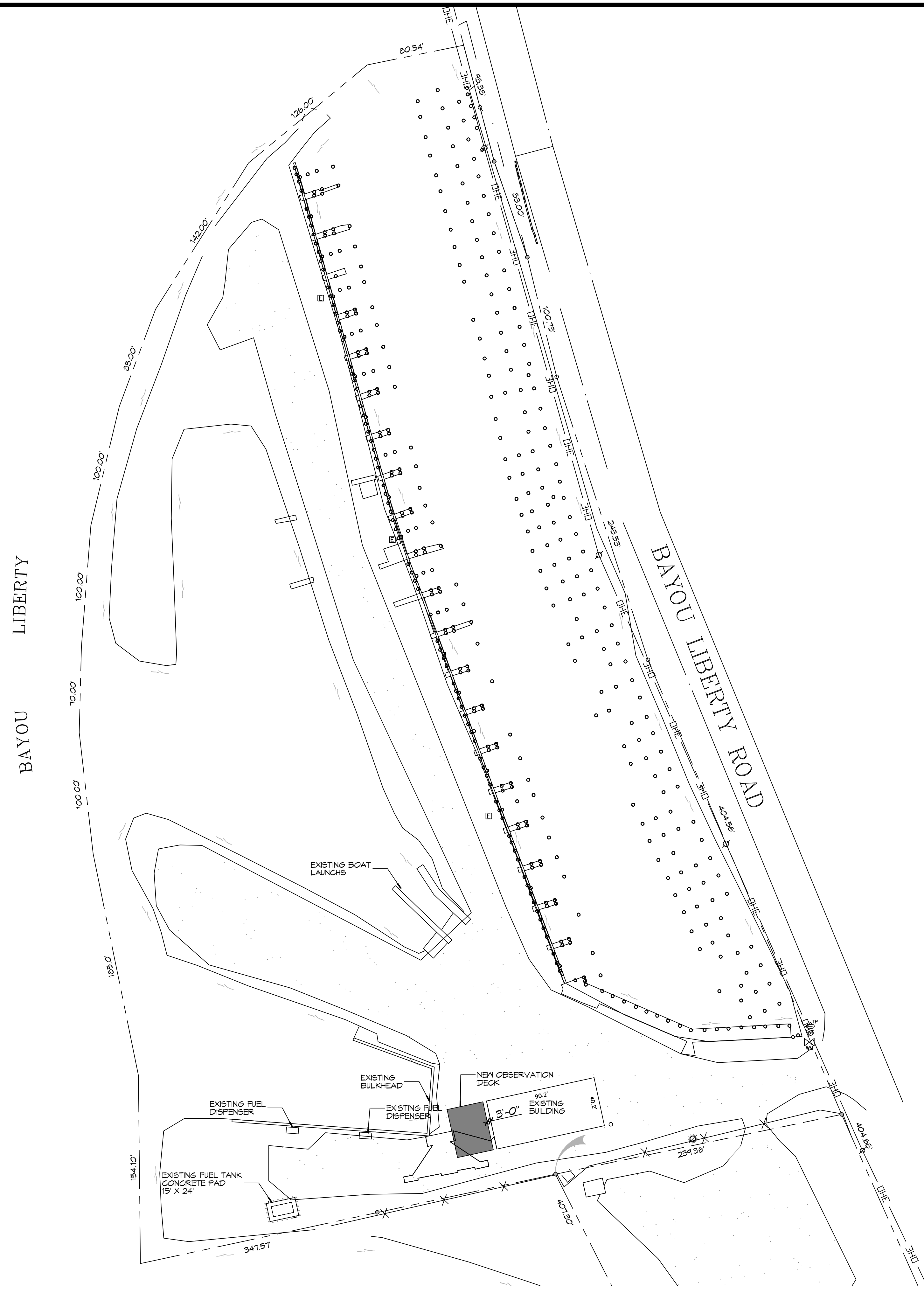
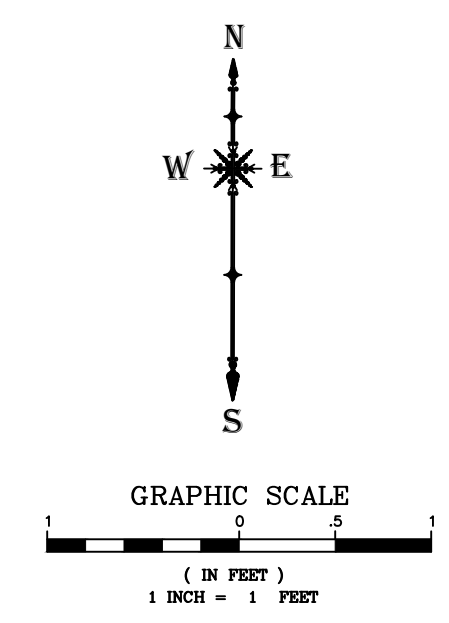


D.E. DAMMON, P.E., ENGINEER OF RECORD, 554 Old Spanish Trail, Sibley, LA 70468, 504.885.6495, www.dammonengineering.com



1 PROPOSED OBSERVATION DECK SITE PLAN
 SCALE: 1" = 50'-0"



ZONING	
PF-3 PUBLIC FACILITY	
DESIGN CRITERIA	
THE CONSTRUCTION FOR SAID RESIDENCE, WHERE BASIC WIND SPEED IS 140 MILES PER HOUR, WIND EXPOSURE ZONE C, IS DESIGNED IN ACCORDANCE WITH: AMERICAN FOREST AND PAPER ASSOCIATION (AF&PA) WOOD FRAME CONSTRUCTION MANUAL FOR ONE AND TWO FAMILY DWELLINGS (WFCM) 2001 EDITION AS WELL AS THE INTERNATIONAL RESIDENTIAL CODE (IRC) 2021 EDITION.	
SHEET INDEX	
SHEET #	SHEET TITLE
C101	PROPOSED OBSERVATION DECK SITE PLAN
C102	EROSION CONTROL PLAN
S101	OBSERVATION DECK, PILING PLAN AND FRAMING PLAN
S102	OBSERVATION DECK ELEVATIONS

DAMMON

ENGINEERING, INC.

LOUISIANA & MISSISSIPPI

www.dammonengineering.com
 info@dammonengineering.com
 Chief Engineer: Brian Mistich, PE
 554 Old Spanish Trail
 Sibley, LA 70468
 PH: 504.885.6495

#	DESCRIPTION	REVISIONS	DATE

SEAL:

NEW OBSERVATION DECK

FOGGY WATERS MARINA

56041 LA-489
 BAYOU LIBERTY ROAD
 SIBLEY, LA 70460
 JOB No: 2025
 DATE: 06-26-25
 DRAWN BY: CKD
 CHECKED BY: EAM

SHEET TITLE:
 PROPOSED
 OBSERVATION DECK
 SITE PLAN

DRAWING NUMBER:

C101

SHEET No: 1 of 4

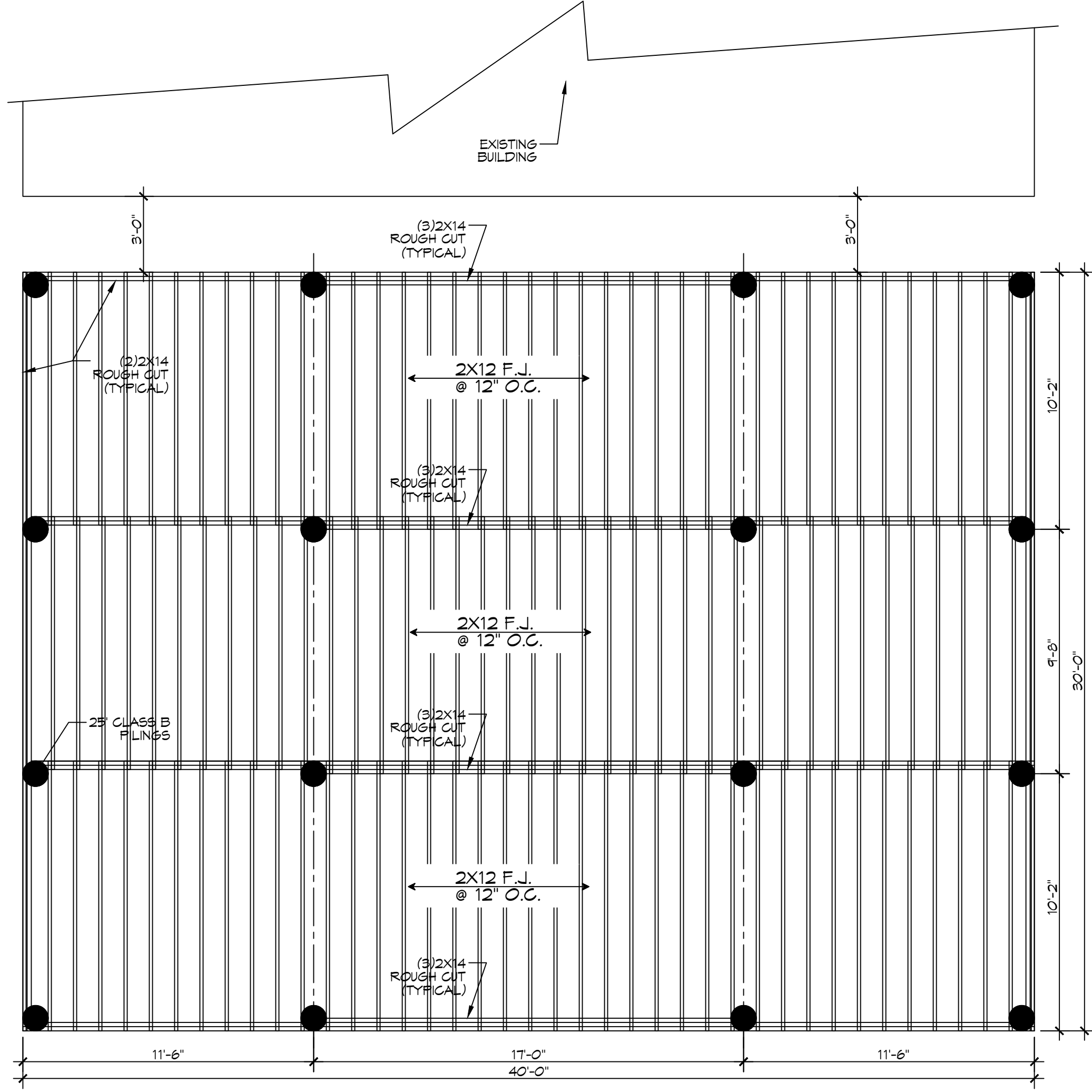
SEE NOTE: ALL DIMENSIONS ARE SHOWN UNLESS OTHERWISE SPECIFIED. ALL DIMENSIONS ARE TO FACE UNLESS OTHERWISE NOTED.

PILING COUNT
16 PILING COUNT

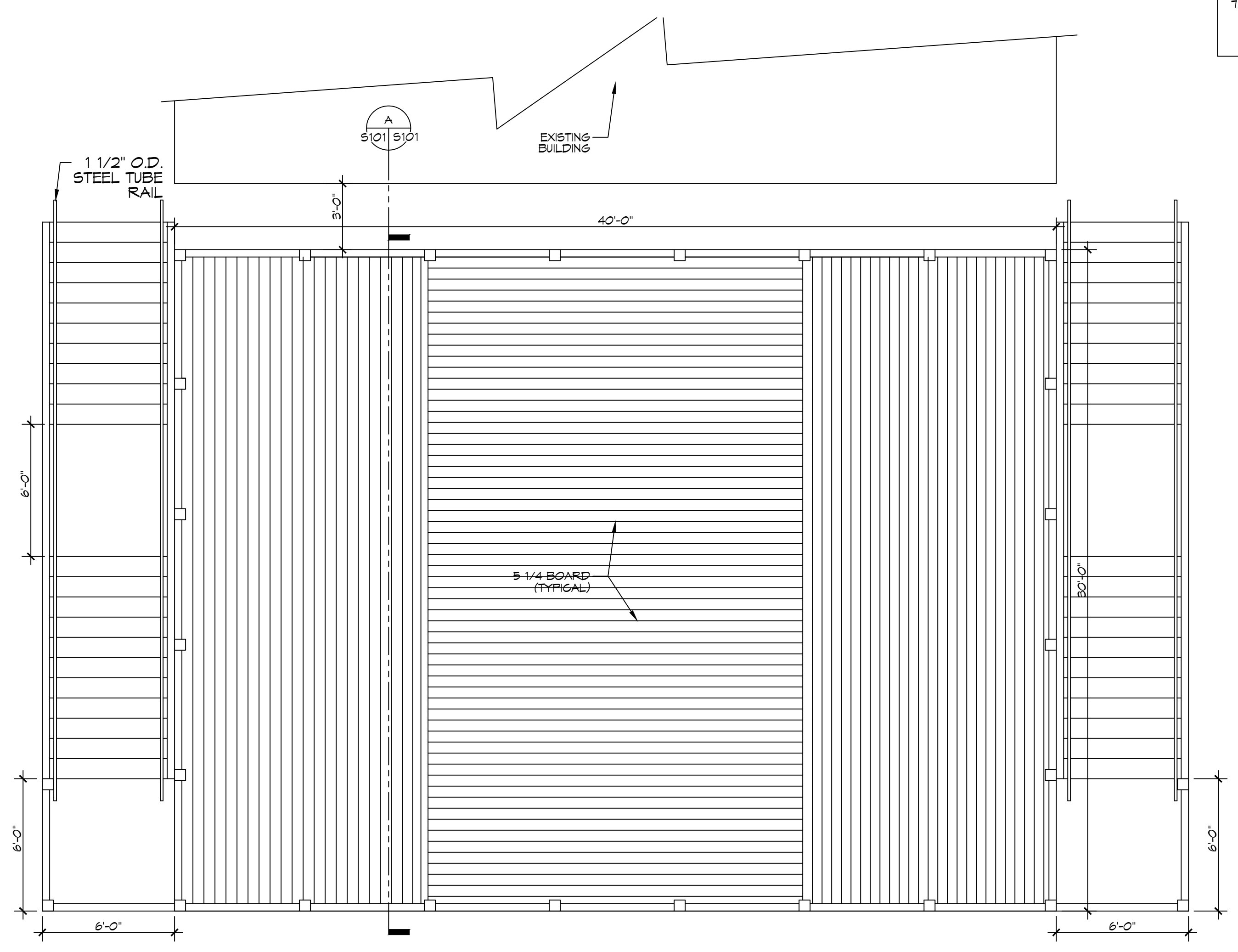
GENERAL NOTES
1. ALL LUMBER SHALL BE PRESSURE TREATED WITH A RETENTION OF .4 PER C.F. 2. ALL FASTENERS SHALL BE HOT DIPPED GALVANIZED (HDG) PER ASTM A153. 3. ALL CONNECTORS SHALL BE HDG PER ASTM A653, CLASS G105 SHEET WITH 1.05 OZ/SF ZINC COATING.

PILING NOTES
1. PILES ARE TO BE CLASS B PRESSURE TREATED 25 FT. IN LENGTH WITH A 8 INCH TIP AND 12" BUTT. 2. ALL PILES SHALL BE DRIVEN TO REFUSAL. 3. CONTRACTOR SHALL DRIVE TEST PILE. 4. NO FIELD SUPERVISION OR INSPECTION PROVIDED UNDER THIS SEAL UNLESS OTHERWISE NOTED. 5. PILE LAYOUT MAY BE MODIFIED DUE TO ACTUAL DRIVING CONDITIONS. ENGINEER TO BE NOTIFIED ON ANY MODIFICATION. 6. A PILE BLOW COUNT LOG OF ALL PILES IS TO BE SUBMITTED TO THE ENGINEER OF RECORD. FAILURE TO SUBMIT SAID LOG WILL RELEASE THE ENGINEER OF ALL RESPONSIBILITY AFTER 5 DAYS OF INSTALLING.

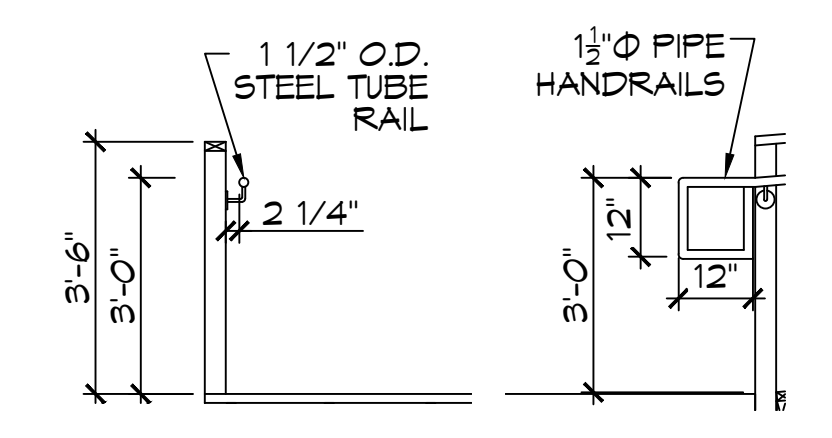
DAMMON ENGINEERING, INC.
 LOUISIANA & MISSISSIPPI
 Chief Engineer: Brian Misch, PE
 554 Old Spanish Trail
 Slidell, LA 70488
 www.dammonengineering.com
 info@dammonengineering.com
 PH: 985.649.5832



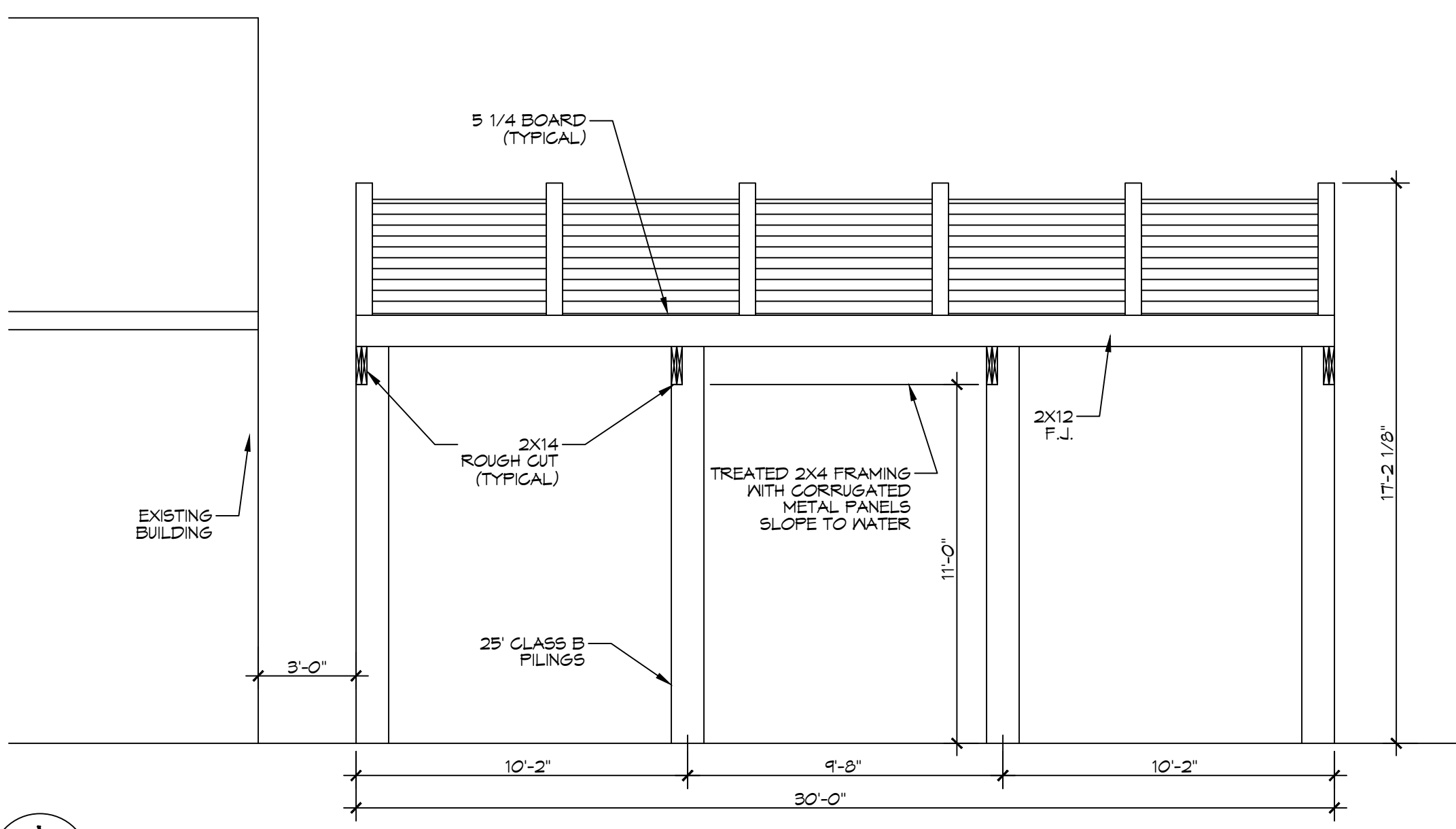
4 PILING AND FRAMING PLAN
 SCALE: 1/4" = 1'-0"
 FRAMING



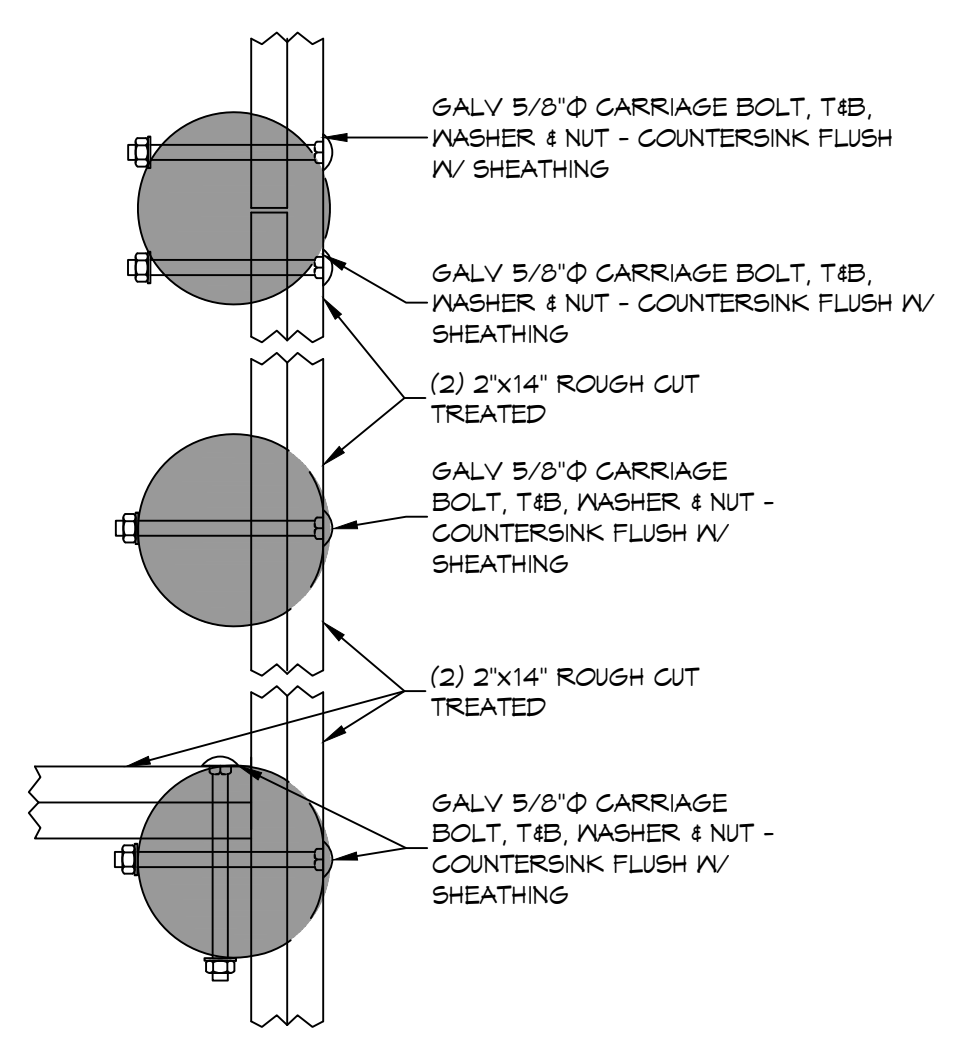
5 OBSERVATION DECK PLAN VIEW
 SCALE: 1/4" = 1'-0"
 FRAMING



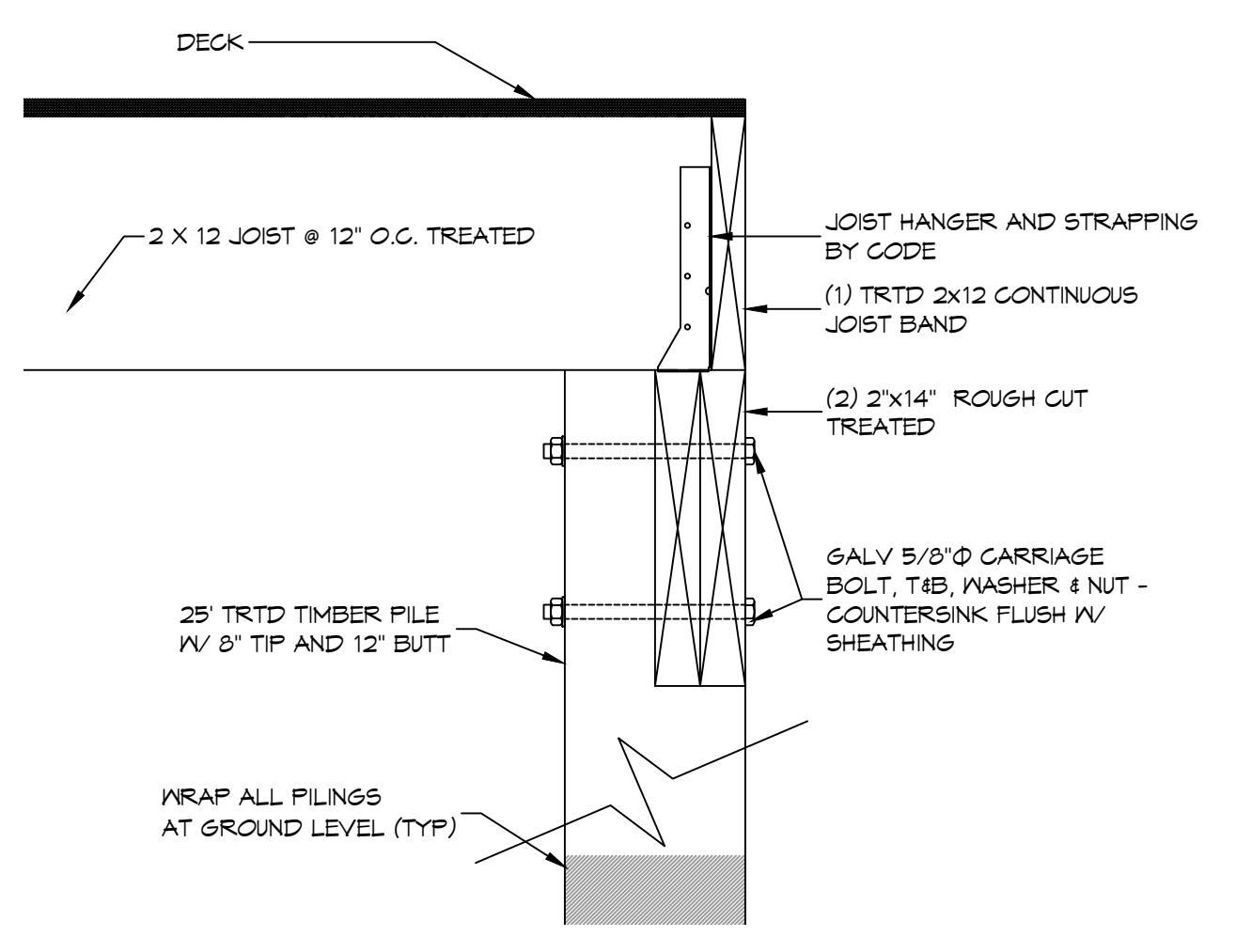
6 HANDRAIL
 SCALE: 3/8" = 1'-0"



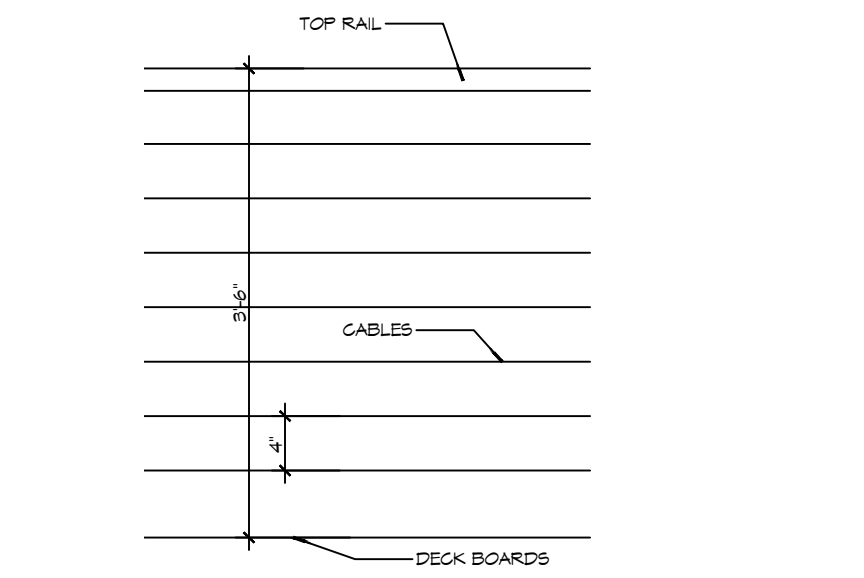
A FRAMING SECTION
 SCALE: 1/4" = 1'-0"
 DECK



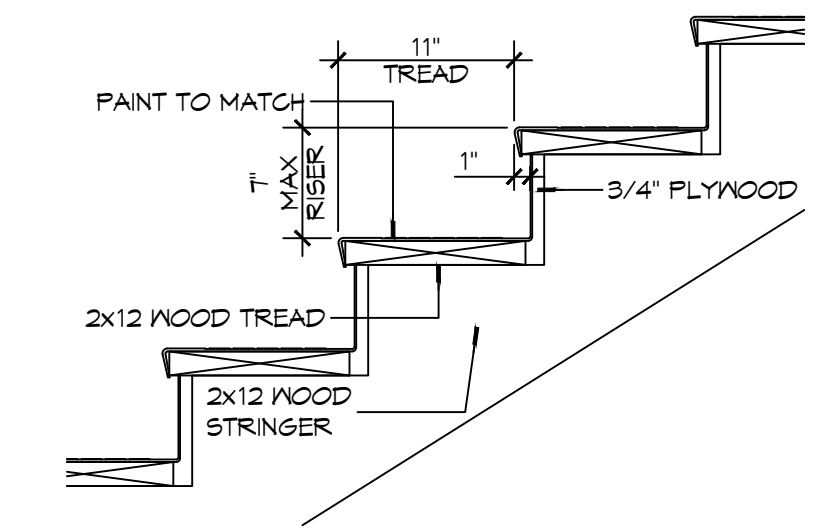
7 DETAIL PERIMETER BAND
 SCALE: 1-1/2" = 1'-0"



8 DETAIL PERIMETER JOIST BAND
 SCALE: 1-1/2" = 1'-0"



9 RAILING DETAIL
 SCALE: 1" = 1'-0"



10 STAIR DETAIL
 SCALE: 1" = 1'-0"

#	DESCRIPTION	DATE

SEAL:

NEW OBSERVATION DECK
FOGGY WATERS MARINA
 56041 LA-489
 BAYOU LIBERTY ROAD
 SLIDELL, LA 70460
 JOB No: 2025-06-26-25
 DRAWN BY: BAX
 CHECKED BY: GKD
 DATE: 06-26-25

SHEET TITLE:
 OBSERVATION DECK, PILING
 PLAN AND FRAMING PLAN

DRAWING NUMBER:

S101

