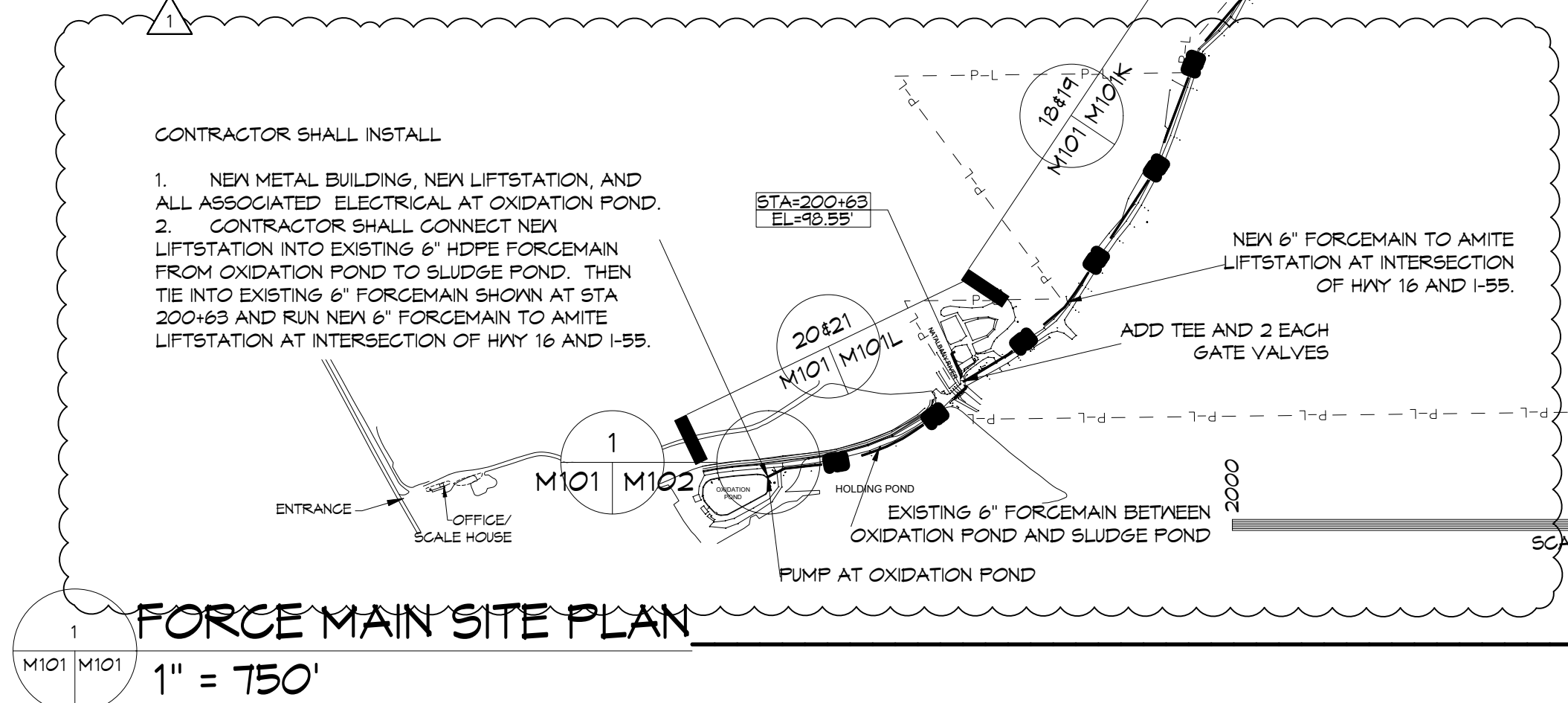
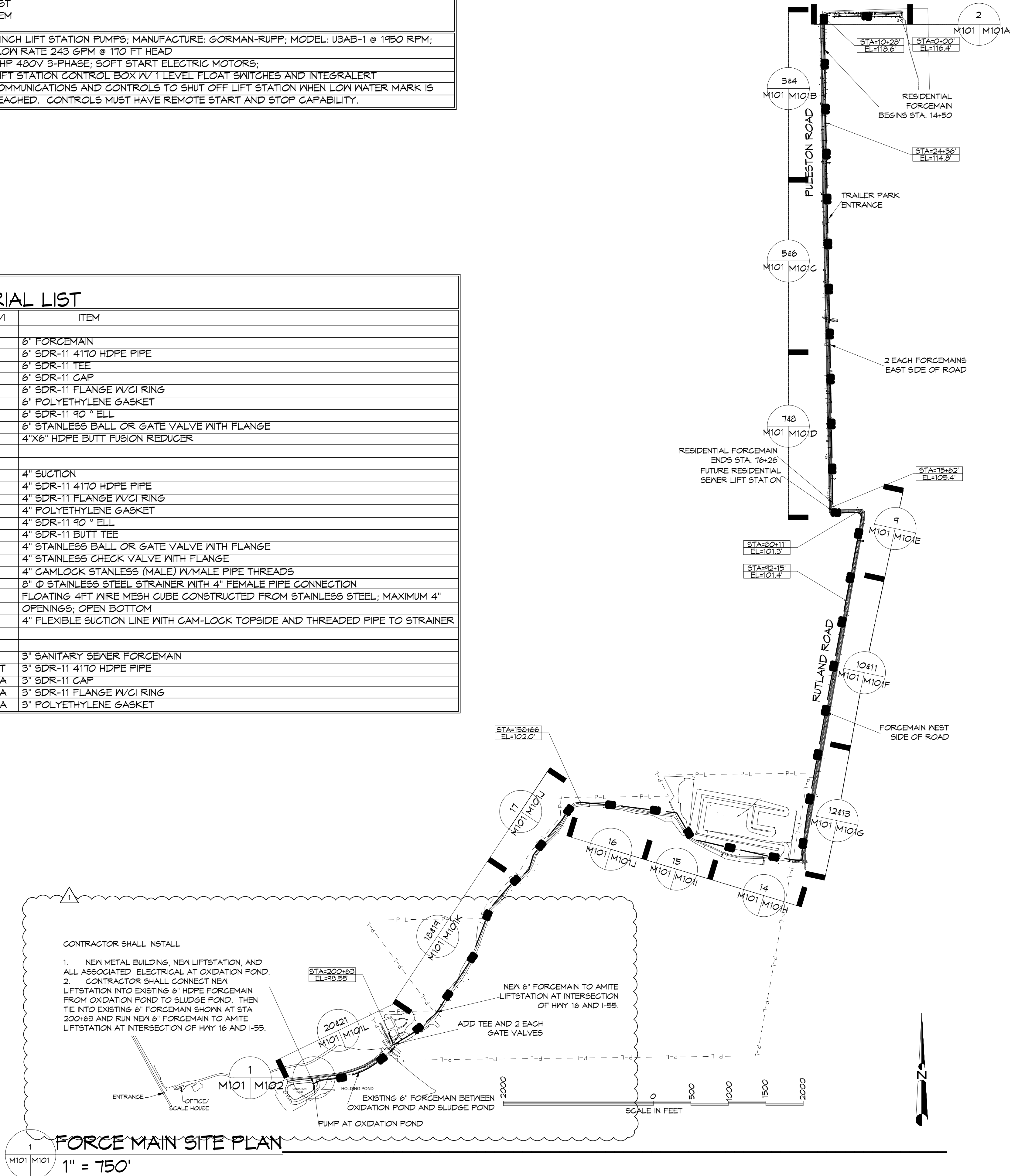


**GENERAL NOTES:**

- PROVIDE ALL LABOR, MATERIAL AND EQUIPMENT FOR A COMPLETE OPERATING SYSTEM. THE SYSTEM SHALL INCLUDE PIPING, VALVES, FITTINGS, AND SUPPORTS WITHOUT ANY RESTRICTIONS TO VOLUME. CONTRACTOR TO CONSTRUCT NEW RISERS WITH CONNECTORS FOR RAIN WATER PUMPS AT EACH HEADWALL.
- CONTRACTOR SHALL PROVIDE LISTED EQUIPMENT FROM MANUFACTURE LISTED OR EQUAL.
- ALL WORK AND MATERIAL SHALL CONFORM STRICTLY TO THE LATEST LOCAL, CITY, PARISH, STATE, DEQ AND NATIONAL GOVERNING CODES.
- CONTRACTOR INSTALLING HDPE PIPE SHALL BE CERTIFIED BY THE MANUFACTURER TO INSTALL HDPE PIPING.
- CONTRACTOR IS TO FIELD VERIFY ALL EXISTING UTILITY LOCATIONS, ELEVATIONS AND SIZES PRIOR TO COMMENCING ANY WORK. CONTRACTOR SHALL PAY NECESSARY FEES FOR PERMITTING.
- CONTRACTOR IS RESPONSIBLE TO VERIFY THE EXISTING INVERTS AND SET NEW INVERTS OF FORCE MAIN.
- THE FORCEMAIN SHALL BE 6" SDR-11 4170 HDPE PIPE. MINIMUM BURIAL DEPTH IS 3FT BELOW GRADE.
- FITTINGS SHALL BE MANUFACTURED FROM A HDPE, SDR-11 (HIGH DENSITY POLYETHYLENE) COMPOUND PER ANSI B-16.40, ASTM D2513 DOT PART 192 AND MANUFACTURED IN ACCORDANCE WITH ISO 9002. ALL FITTINGS SHALL BE PRODUCED TO SCHEDULE 80 DIMENSIONS. PRODUCTS SHALL BE PRESSURE RATED FOR A MINIMUM OF 160 PSI USING QUALITY ASSURANCE TEST REQUIREMENTS OF THESE STANDARDS WITH REGARD TO DIMENSIONS, WORKMANSHIP, BURST PRESSURE, FLATTENING RESISTANCE AND END PRODUCT QUALITY. ALL VALVE DIAPHRAGMS AND SEATS SHALL BE PTFE; VALVE O-RINGS SHALL BE EPDM OR VITON® AS APPLICABLE. ALL VALVE UNION NUTS SHALL HAVE BUTTRESS STYLE THREADS. ALL VALVE COMPONENTS SHALL BE REPLACEABLE. ALL SYSTEM COMPONENTS SHALL BE MANUFACTURED BY AN ISO CERTIFIED MANUFACTURER.
- BUTT FUSION SHALL BE USED TO JOIN INDIVIDUAL LENGTHS OF PIPE IN THE FOLLOWING SEQUENCE.
  - SECURE COMPONENTS TO BE JOINED WITH CLAMPING DEVICE(S).
  - FACE PIPE ENDS TO MEET MANUFACTURERS SPECIFICATIONS, USING A ROTATING PLANNER BLOCK.
  - PROPERLY ALIGN PIPE.
  - HEAT ENDS OF PIPE TO MANUFACTURER'S RECOMMENDATION AND BRING TOGETHER AT RECOMMENDED FORCE USING A HYDRAULIC MACHINE THAT WILL APPLY MANUFACTURER'S SPECIFIED FORCE, FOR THE PIPE SIZE.
  - HOLD PRESSURE ON PIPE JOINT FOR TIME SUFFICIENT TO DEVELOP THE REQUIRED STRENGTH, AS RECOMMENDED BY THE MANUFACTURER.
  - REMOVE THE INTERIOR BEAD, USING MANUFACTURER'S RECOMMENDED EQUIPMENT.
- ALL JOINTS SHALL BE INSTALLED SUCH THAT THE CONNECTION OF PIPE SECTION SHALL BE WATERTIGHT AND FORM A CONTINUOUS LINE FREE FROM IRREGULARITIES IN THE FLOW LINE.
- TRENCH WIDTH SHALL BE IN ACCORDANCE WITH ASTM D2321 AND SHALL BE SUFFICIENT TO ENSURE WORKING ROOM TO PROPERLY AND SAFELY PLACE AND COMPACT HAUNCHING AND OTHER BACKFILL MATERIALS. TRENCH WIDTH SHALL INCLUDE SUFFICIENT AREA FOR HDPE FORCE MAIN. MINIMUM BACKFILL DEPTH SHALL NOT BE LESS THAN 36" WHERE VEHICULAR TRAFFIC CAN BE PRESENT AND 24" WHERE WASHOUT OCCURS. ALL PIPING INSTALLED IN A TRENCH SHALL HAVE MARKER TAPE PLACED 12" ABOVE PIPE.
- HORIZONTAL DIRECTIONAL DRILLING SHALL BE IN ACCORDANCE WITH THE LATEST EDITION OF LA DOTD STANDARD SPECIFICATION FOR ROADS AND BRIDGES. THE CONTRACTOR SHALL SUPPLY TO THE ENGINEER A WRITTEN DESCRIPTION, TOGETHER WITH SUPPORTING DOCUMENTATION THAT DEFINES THE CONTRACTOR'S PLANS (INCLUDING HDD PLAN, PROFILE, AND CALCULATIONS) AND PROCEDURES FOR PROPOSED OPERATIONS, SURFACE EQUIPMENT LAYOUT, AREA REQUIREMENTS, AND A DESCRIPTION OF THE SEQUENCE OF PROPOSED PIPE INSTALLATION. ALL PIPING INSTALLED USING HORIZONTAL DIRECTIONAL DRILLING SHALL HAVE A TRACER WIRE INSTALLED WITH PIPE.
- TEST ALL PIPING AT REQUIRED PRESSURE.
- THE DRAWINGS INDICATE SIZE AND GENERAL LOCATION OF WORK. SCALE DIMENSIONS SHALL NOT BE USED. THE EXACT LOCATION AND LOCATION OF ALL RISERS SHALL BE DETERMINED BY ACTUAL CONDITIONS IN THE FIELD.
- ALL FORCE MAINS AND PIPING NOT SHOWN FOR CLARITY, ALL LOCATIONS FIELD VERIFIED.

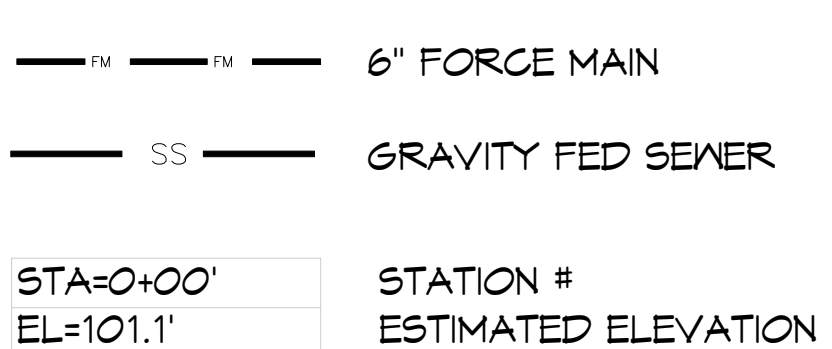
EQUIPMENT LIST	QUANTITY	ITEM
	2	4 INCH LIFT STATION PUMPS; MANUFACTURE: GORMAN-RUPP; MODEL: USAB-1 @ 1950 RPM; FLOW RATE 243 GPM @ 110 FT HEAD
	2	15HP 480V 3-PHASE; SOFT START ELECTRIC MOTORS;
	1	LIFT STATION CONTROL BOX W/ 1 LEVEL FLOAT SWITCHES AND INTEGRAL COMMUNICATIONS AND CONTROLS TO SHUT OFF LIFT STATION WHEN LOW WATER MARK IS REACHED. CONTROLS MUST HAVE REMOTE START AND STOP CAPABILITY.

MATERIAL LIST		
QTY	U/I	ITEM
		6" FORCEMAIN
21,297	FT	6" SDR-11 4170 HDPE PIPE
1	EA	6" SDR-11 TEE
2	EA	6" SDR-11 CAP
3	EA	6" SDR-11 FLANGE W/CI RING
2	EA	6" POLYETHYLENE GASKET
6	EA	6" SDR-11 90° ELL
2	EA	6" STAINLESS BALL OR GATE VALVE WITH FLANGE
1	EA	4"X6" HDPE BUTT FUSION REDUCER
		4" SUCTION
30	FT	4" SDR-11 4170 HDPE PIPE
3	EA	4" SDR-11 FLANGE W/CI RING
16	EA	4" POLYETHYLENE GASKET
2	EA	4" SDR-11 90° ELL
2	EA	4" SDR-11 BUTT TEE
4	EA	4" STAINLESS BALL OR GATE VALVE WITH FLANGE
4	EA	4" STAINLESS CHECK VALVE WITH FLANGE
2	EA	4" CAMLOCK STAINLESS (MALE) W/MALE PIPE THREADS
2	EA	3" Ø STAINLESS STEEL STRAINER WITH 4" FEMALE PIPE CONNECTION
2	EA	FLOATING 4FT WIRE MESH CUBE CONSTRUCTED FROM STAINLESS STEEL; MAXIMUM 4" OPENINGS; OPEN BOTTOM
50	FT	4" FLEXIBLE SUCTION LINE WITH CAM-LOCK TOPSIDE AND THREADED PIPE TO STRAINER
		3" SANITARY SEWER FORCEMAIN
6,176	FT	3" SDR-11 4170 HDPE PIPE
2	EA	3" SDR-11 CAP
2	EA	3" SDR-11 FLANGE W/CI RING
2	EA	3" POLYETHYLENE GASKET



- ALL MATERIALS AND WORK, INCIDENTAL TO THE CONSTRUCTION OF THIS PROJECT, SHALL CONFORM TO ALL GOVERNING CODES, AND REGULATIONS OF AGENCIES IN AUTHORITY.
- CONTRACTOR SHALL PROVIDE ALL PUBLIC PROTECTIONS NECESSARY AS REQUIRED BY LAW.
- THE DRAWINGS, SPECIFICATIONS AND ANY SUBSEQUENTLY ISSUED ADDENDA, AMENDMENTS OR SUCH CHANGE ORDERS APPROVED BY THE OWNER AND THE CONTRACTOR ARE PART OF THESE CONTRACT DOCUMENTS.
- CONTRACTOR SHALL WARRANT ALL WORK FOR ONE (1) YEAR FROM THE DATE OF SUBSTANTIAL COMPLETION UNLESS SPECIFICALLY DIRECTED IN OTHER DRAWINGS, SPECIFICATIONS OR SUBSEQUENTLY ISSUED ADDENDA OR AMENDMENTS.
- DO NOT SCALE DRAWINGS. CONSULT WITH THE ENGINEER REGARDING ANY ITEMS IN THE CONTRACT DOCUMENTS THAT REQUIRE CLARIFICATION.
- TRASH SHALL BE REMOVED FROM THE SITE NOT LESS THAN TWICE MONTHLY.
- THE GENERAL CONTRACTOR SHALL VERIFY EXISTING CONDITIONS PRIOR TO COMMENCING WORK AND REPORT ANY AND ALL DISCREPANCIES TO THE ENGINEER.
- CONTRACTOR VEHICLES AND EQUIPMENT NECESSARY FOR CONSTRUCTION MAY BE PARKED ON THE SITE. OTHER VEHICLES PARKED ON THE SITE REQUIRE THE OWNER'S PERMISSION.
- NAMING A CERTAIN BRAND, MAKE OR MANUFACTURER IS TO DESIGNATE THE GENERAL STYLE, TYPE, CHARACTER AND QUALITY STANDARD OF THE PRODUCT DESIRED. SUBSTITUTION REQUESTS MUST BE SUBMITTED PRIOR TO BIDDING.
- ALL MATERIALS/EQUIPMENT SHALL BE INSTALLED PER MANUFACTURER'S RECOMMENDATIONS. WORK NOT CONSISTENT WITH MANUFACTURER'S RECOMMENDATIONS WILL BE REJECTED BY OWNER/ENGINEER.

**LEGEND**



**NOTE: NAMING A CERTAIN BRAND, MAKE OR MANUFACTURER IS TO DESIGNATE THE GENERAL STYLE, TYPE, CHARACTER AND QUALITY STANDARD OF THE PRODUCT DESIRED. SUBSTITUTION REQUESTS MUST BE SUBMITTED PRIOR TO BIDDING.**

**DAMMON ENGINEERING, INC.**  
LOUISIANA & MISSISSIPPI  
www.dammonengineering.com  
info@dammonengineering.com  
554 Old Spanish Trail  
Slidell, LA 70458  
PH: 985.649.5832

REVISIONS	DATE
1. Updated Existing Conditions at Site	8/26/2025

SEAL:

**NEW FORCEMAIN TANGIPAHOA PARISH LANDFILL**  
AMITE CITY, LA  
JOB No: 2440 DATE: 2-27-2025  
DRAWN BY: BJK CHECKED BY:

SHEET TITLE: **FORCE MAIN SITE PLAN**  
DRAWING NUMBER: **M101**  
SHEET No: 2 of 7