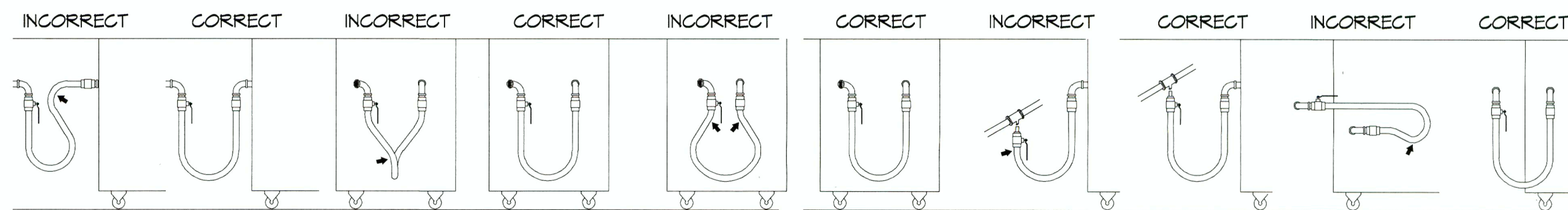


6" TO TRAP



**SHARP BENDS:** THE CORRECT WAY TO INSTALL METAL HOSE FOR VERTICAL TRAVERSE IS WITH A SINGLE, NATURAL LOOP. AVOID SHARP BENDS THAT STRAIN AND TWIST THE METAL HOSE TO A POINT OF EARLY FAILURE AT THE COUPLING.

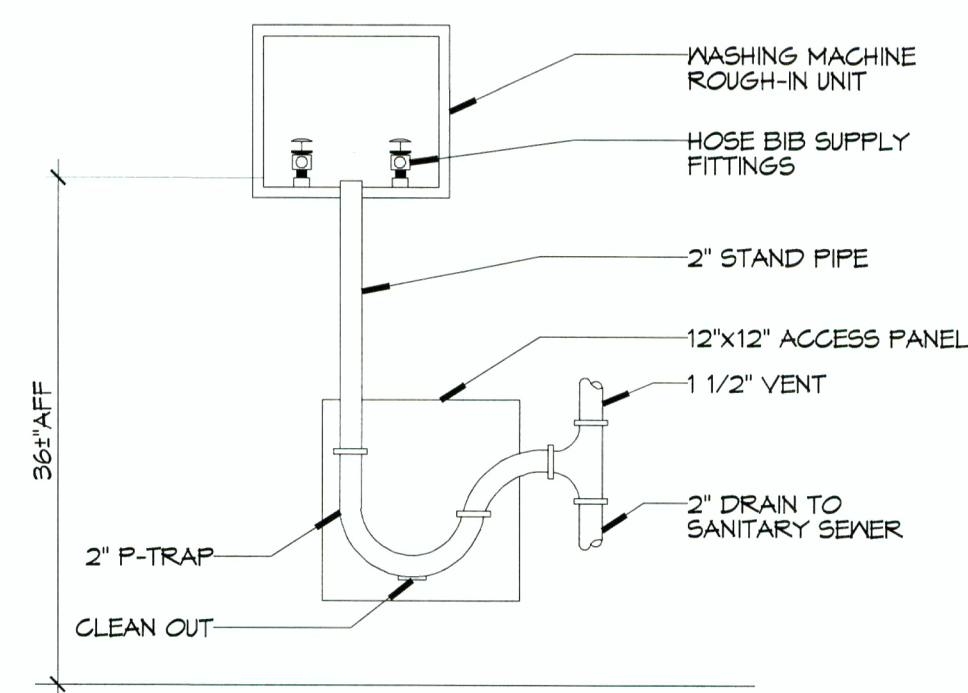
**Twisting:** COUPLINGS AND HOSE SHOULD BE INSTALLED IN THE SAME VERTICAL PLANE. FAILURE TO DO SO CAUSES TORSIONAL TWISTING & UNDUCE STRAIN CAUSING PREMATURE FAILURE.

**Fatigue:** MAINTAIN THE MINIMUM OR LARGER BENDING DIAMETER BETWEEN THE COUPLINGS. CREATES DOUBLE BENDS CAUSING WORK FATIGUE AT THE FITTINGS.

**IN CORRECT:** AVOID SHARP BENDS AND KINKS WHEN PULLING EQUIPMENT AWAY FROM WALL. MAXIMUM PULL WILL KINK ENDS, EVEN IF INSTALLED PROPERLY, AND REDUCE CONNECTOR LIFE.

**SELF-DRAINING:** IN ALL INSTALLATIONS WHERE SELF-DRAINING IS NOT NECESSARY, CONNECT METAL HOSE IN A VERTICAL LOOP. DO NOT CONNECT METAL HOSE HORIZONTALLY UNLESS SELF-DRAINING IS NECESSARY, THEN USE SUPPORT ON LOWER PLANE.

**CORRECT:** MINIMUM PULL OF EQUIPMENT AWAY FROM WALL PERMISSIBLE FOR ACCESSIBILITY TO SUPR-QUIK DISCONNECT.



3 DETAIL WASHING MACHINE HOOK-UP

**GENERAL PIPING NOTES**

- SEE SHEET P101 FOR GENERAL PLUMBING NOTES.
- WATER LINES ON EXTERIOR WALLS SHALL BE ROUTED ON INTERIOR SIDE OF INSULATION.
- NOT USED.
- SEE PLUMBING RISER DIAGRAMS FOR PIPE SIZES NOT INDICATED ON THIS SHEET.

**LEGEND**

SYMBOL	DESCRIPTION
— CW —	COLD WATER SUPPLY PIPING (CW)
— HW —	HOT WATER SUPPLY PIPING (HW)
— THW —	TEMPERED WATER SUPPLY PIPING (THW)
— GAS —	GAS PIPING
○	GLOBE VALVE
⊕	TEMPERING VALVE
⊖	GAS COCK
⊕	HEATER
⊕	ELBOW UP
⊖	ELBOW DOWN
⊕	HOSE BIB
⊕	SPRINKLER RISER

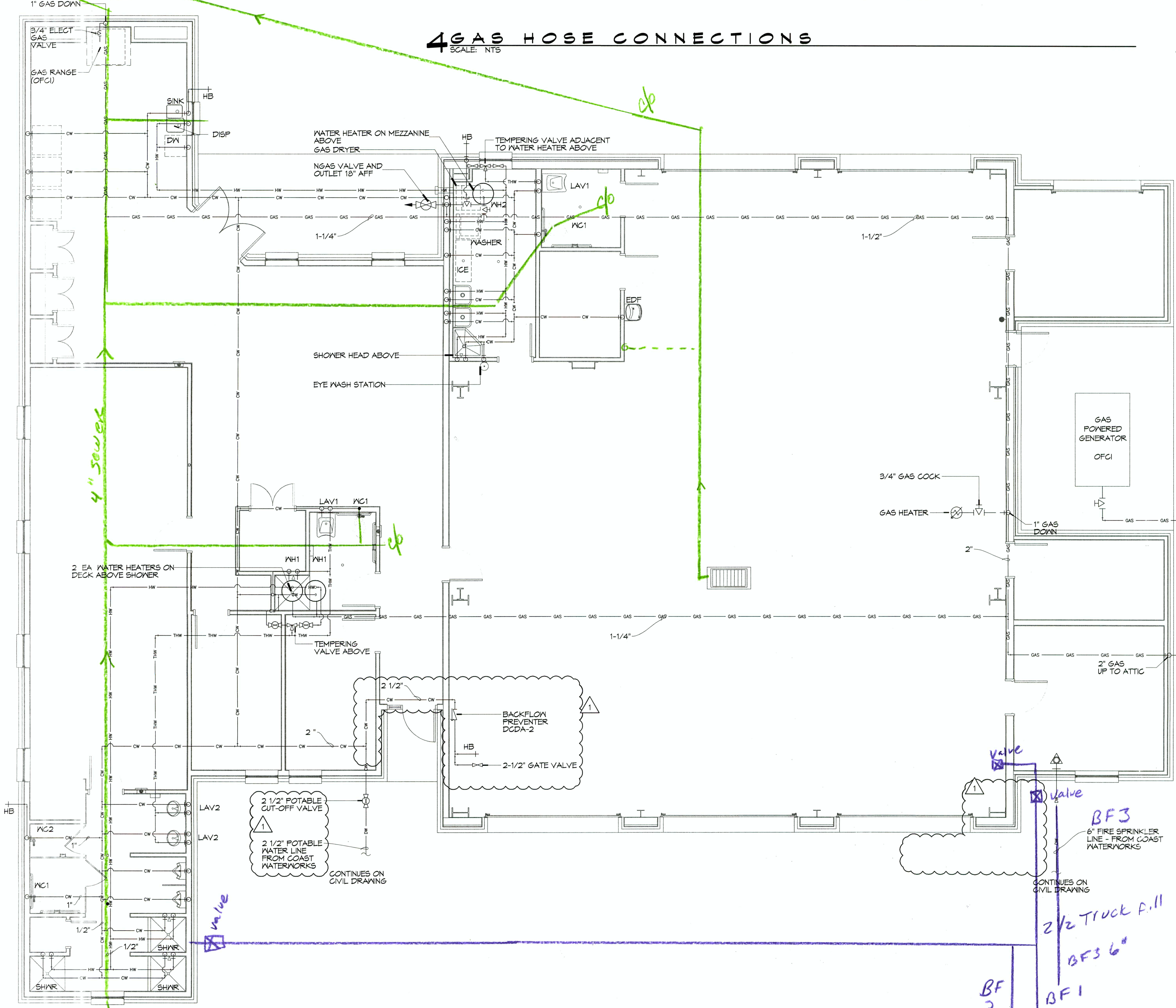
**GAS EQUIPMENT SCHEDULE**

DESCRIPTION	BTU INPUT
50 GALLON HOT WATER HEATER	76,000
60 GALLON HOT WATER HEATER	120,000
60 GALLON HOT WATER HEATER	120,000
RANGE	175,000
SPACE HEATER	125,000
CLOTHES DRYER	95,000
GENERATOR	1,500,000
<b>TOTAL BTU</b>	<b>2,151,000</b>

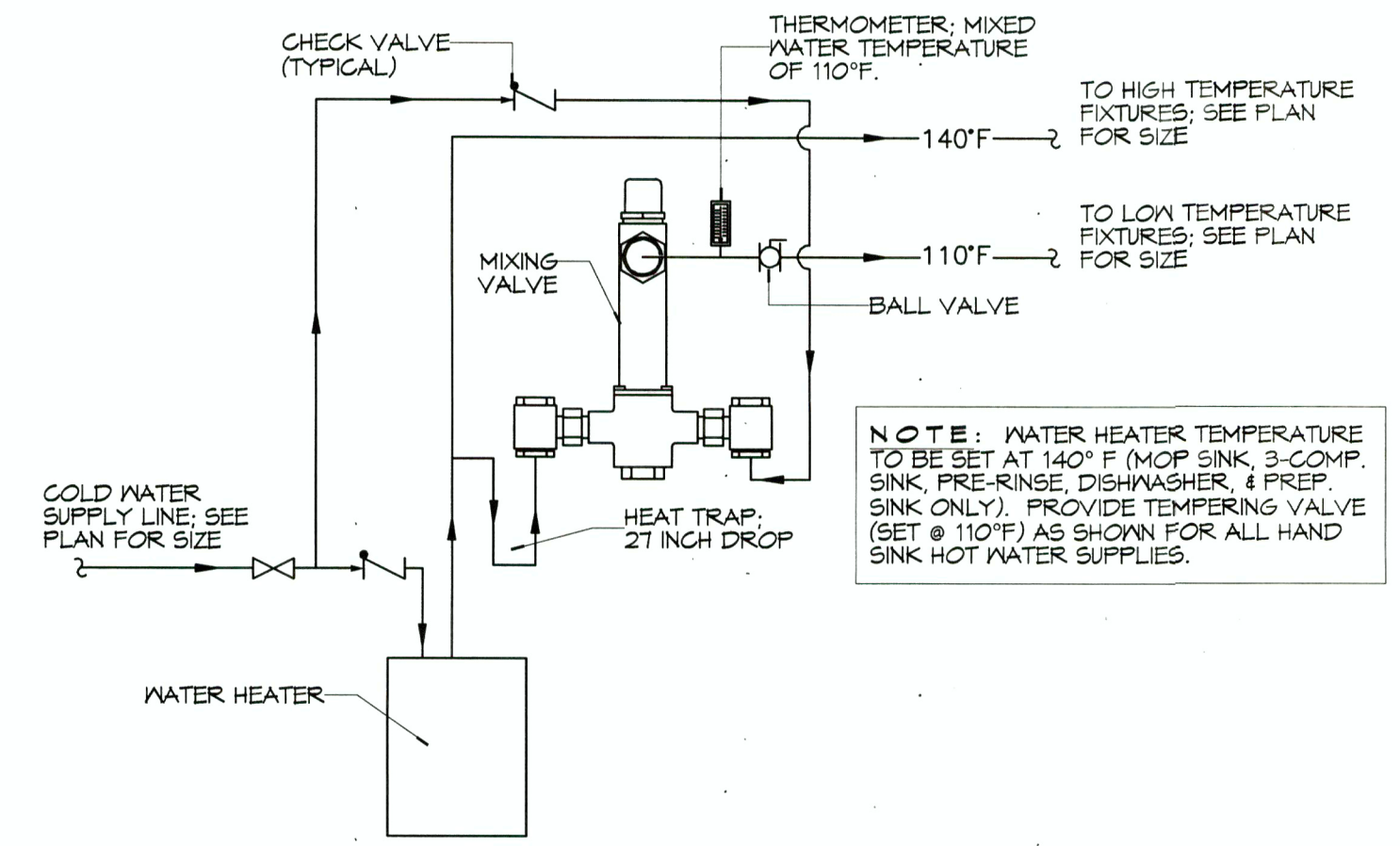
**NOTES:**  
 1. ALL GAS PIPE SHALL BE SCHEDULE 40 BLACK STEEL PIPE. ALL PIPE INSTALLED ON ROOF SHALL BE SUPPORTED ON A PIPE PIER SUPPORT SYSTEM. WOOD BLOCKING NOT ALLOWED.  
 2. ALL GAS PIPING IS SIZED FOR A LOW PRESSURE SYSTEM. (< 2 psig OR LESS AND A PRESSURE DROP OF 0.5 IN. OF WATER COLUMN.)

**4 GAS HOSE CONNECTIONS**

SCALE: NTS



- NOTES:**
- HEAT TRAP IS NOT REQUIRED WHERE MIXING VALVE IS INSTALLED BELOW STORAGE TANK OR WATER HEATER.
  - SET THE MIXING VALVE TO THE SYSTEM ACCORDING TO MANUFACTURER'S INSTRUCTIONS.



1 DETAIL

TEMPERED WATER VALVE

**2 PLUMBING PLAN - WATER AND GAS**

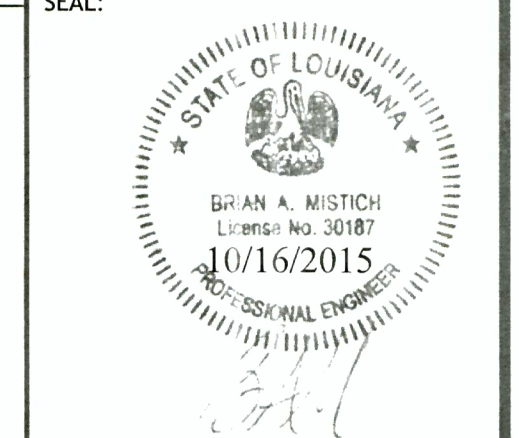
SCALE: 3/16"=1'-0"

**DAMMON ENGINEERING, INC.**  
 Architects & Engineers  
 www.dammonengineering.com  
 Chief Engineer: Kevin J. Kinchen, NCARB  
 574 Old Spanish Trail  
 Suite 1, LA 70488  
 Phone: 504.949.9852  
 Fax: 504.941.9380

DATE: 8-3-2015

REVISIONS:

#	DESCRIPTION	DATE
1	APPENDIX NO. 2	



ST. TAMMANY FIRE PROTECTION DISTRICT NO. 1  
**FIRE STATION 18**

61795 AIRPORT ROAD  
 SLIDELL, LOUISIANA 70460  
 JOB NO.: 2224 DATE: JULY 1, 2015  
 DRAWN BY: DPD CHECKED BY: KJK

SHEET TITLE:  
 PLUMBING PLAN - WATER AND GAS

DRAWING NUMBER:  
**P102**

SHEET No: 30 of 35