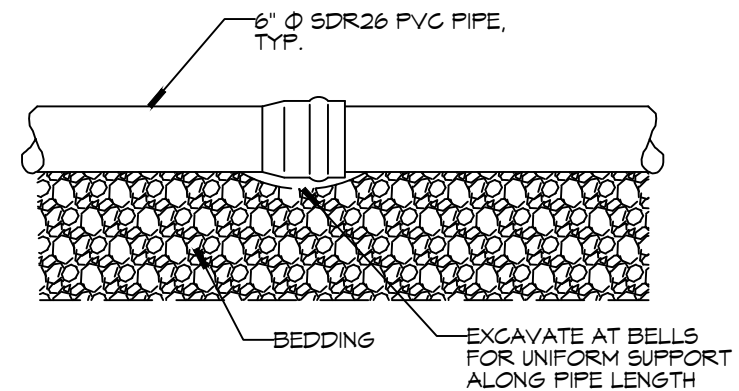


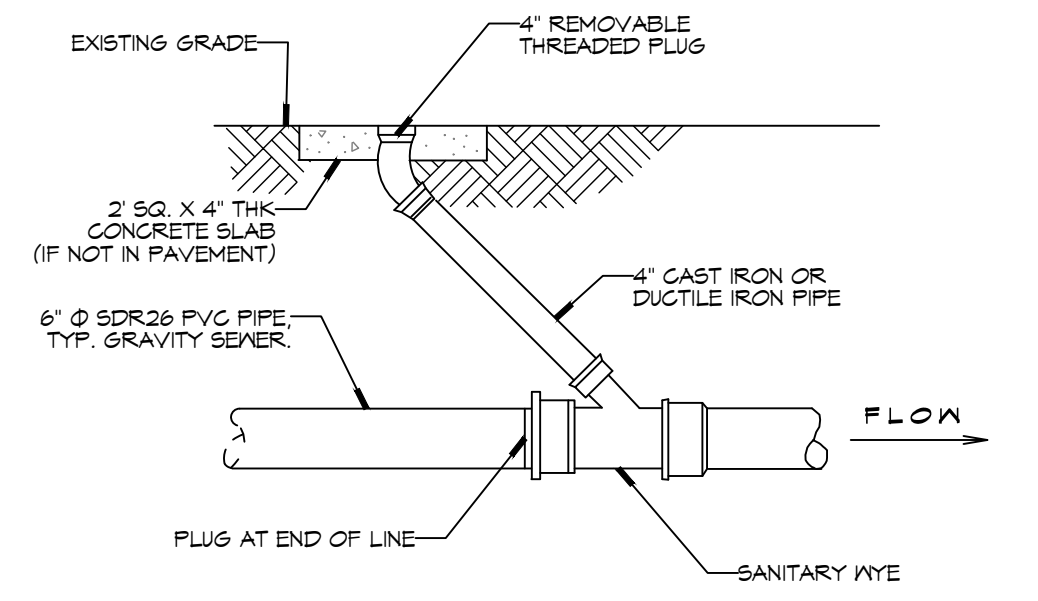
FILE NAME: J:\11 - Dammon\1013 - Fire Station #10\1013-01-01-01.dwg PLOT DATE: 5/20/2025 10:05:30 AM PLOT BY: JLD

2 **DETAIL**
SCALE: N.T.S.



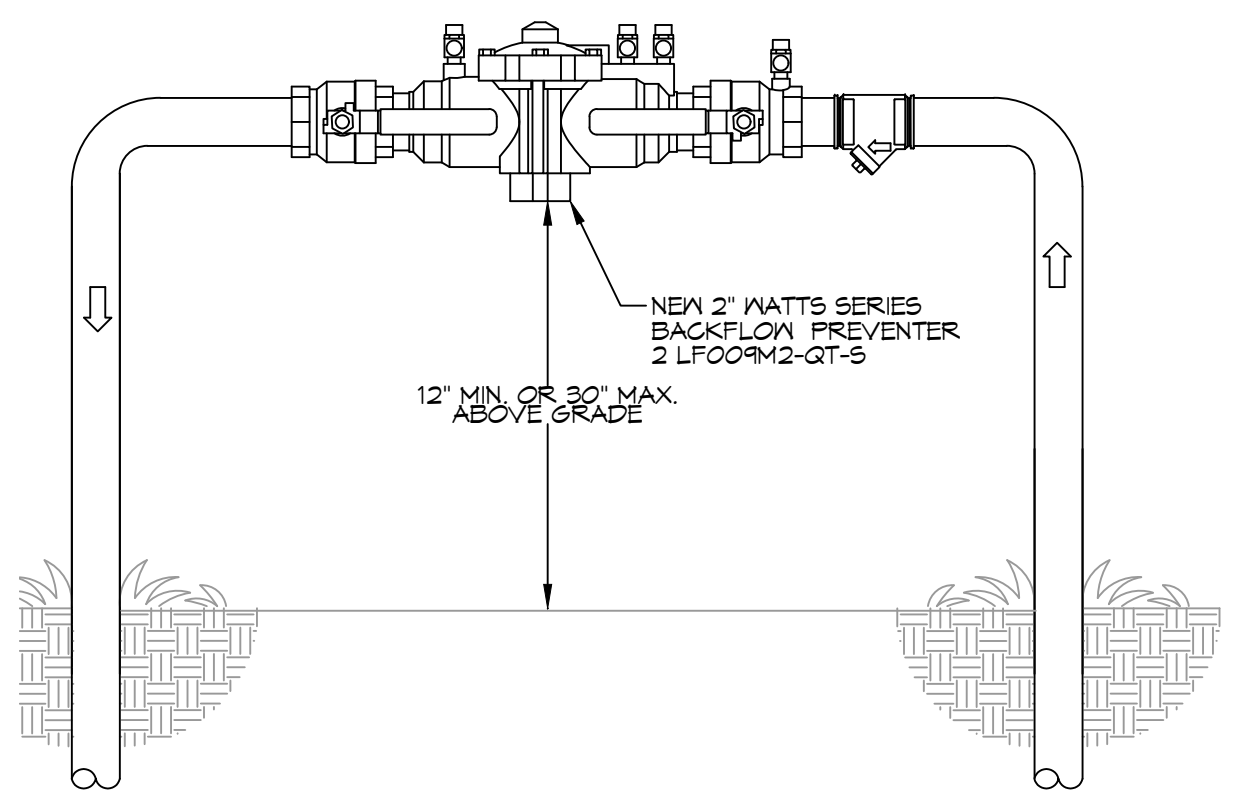
SERVICE LATERAL DETAIL

3 **DETAIL**
SCALE: N.T.S.



THROUGH FLOW CLEAN OUT DETAIL

4 **TYPICAL RISER DETAIL**
SCALE: N.T.S.



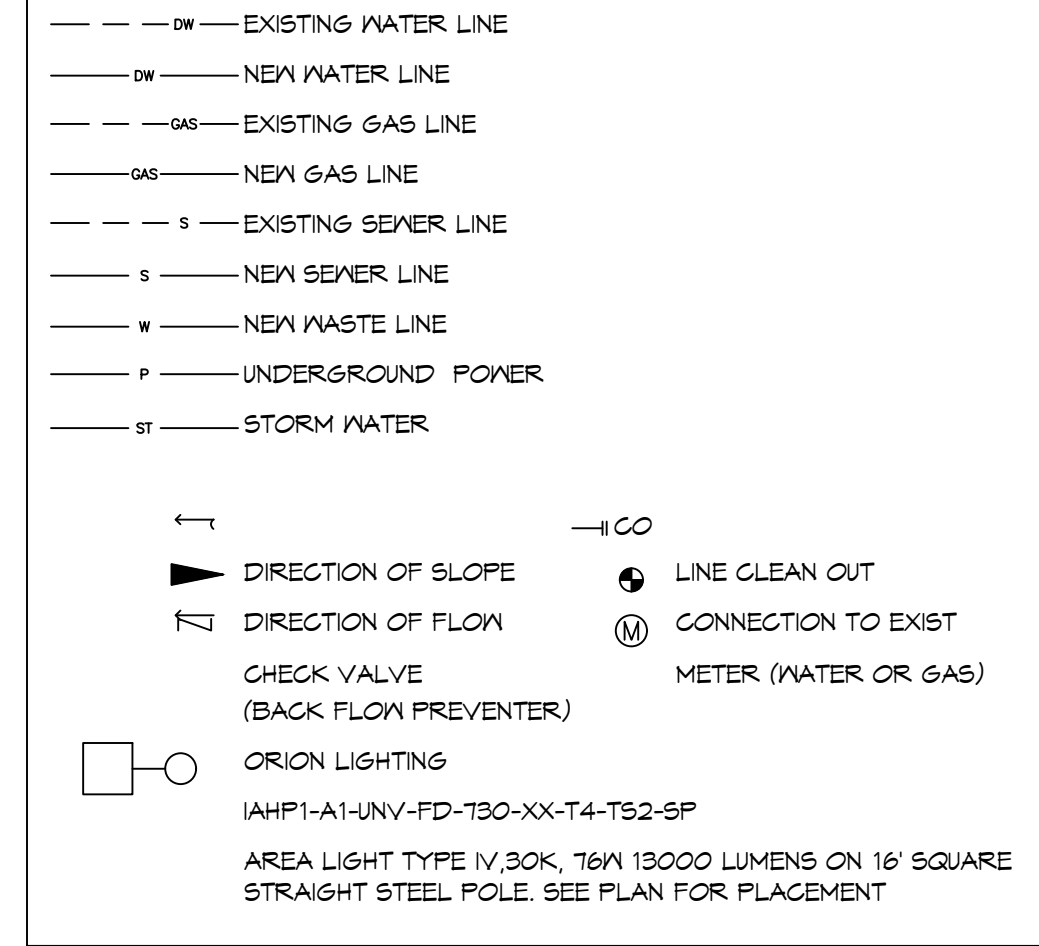
SITE LIGHTING

EXTERIOR LIGHTING SHALL BE SHADED OR INWARDLY DIRECTED IN SUCH A MANNER SO THAT NO DIRECT LIGHTING OR GLARE BE CAST BEYOND THE PROPERTY LINE. THE INTENSITY OF SUCH LIGHTING SHALL NOT EXCEED ONE FOOT CANDLE AS MEASURED AT THE ABUTTING PROPERTY LINE.

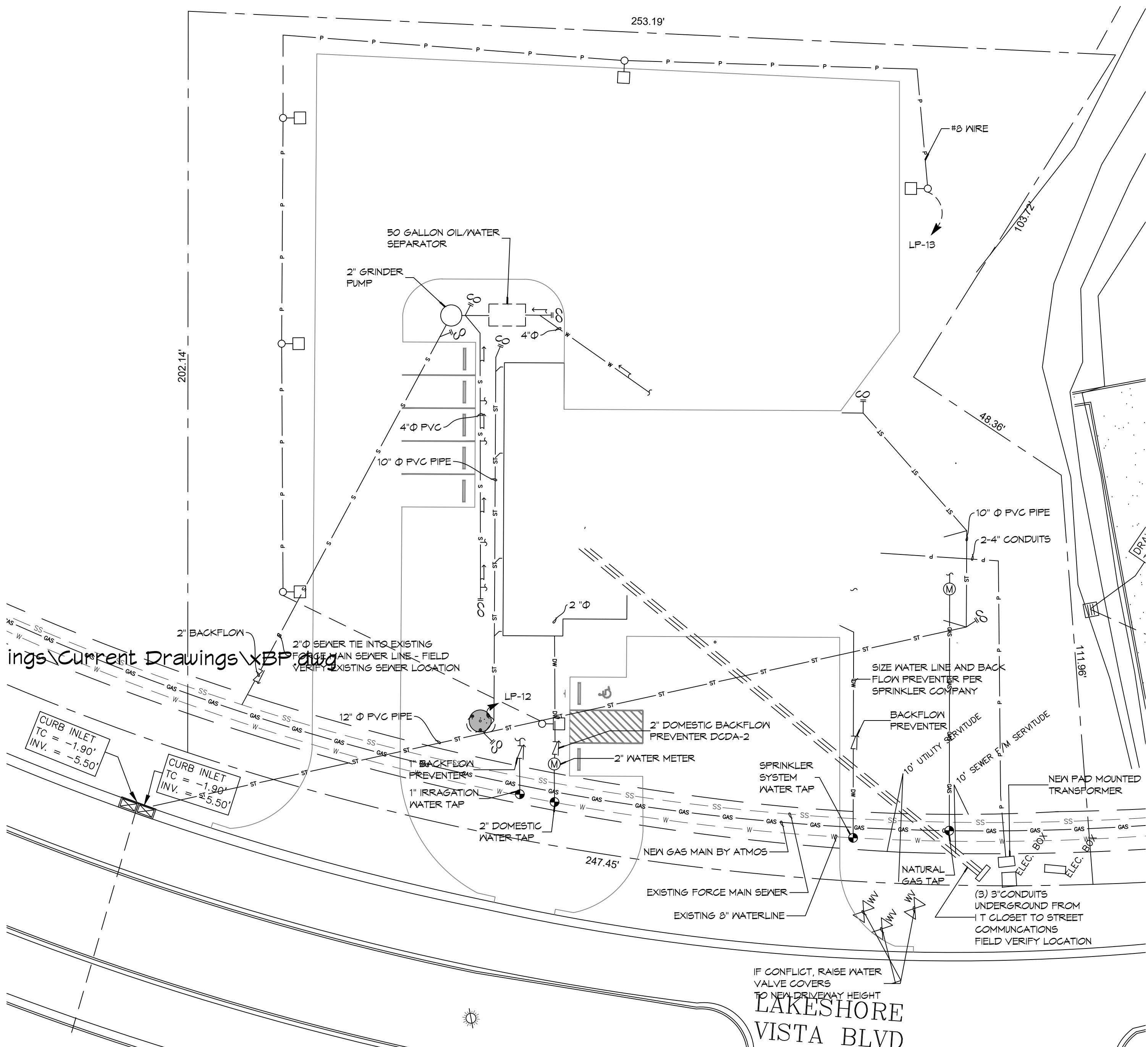
GENERAL SITE UTILITIES NOTES

- ALL CONSTRUCTION SHALL COMPLY WITH CONTRACT SPECIFICATIONS AND APPLICABLE LOCAL, STATE, AND FEDERAL STANDARDS AND REGULATIONS.
- CONSTRUCTION SHALL NOT INTERRUPT EXISTING UTILITIES.
- ALL DISTURBED GROUND SHALL BE RESTORED IN KIND TO A CONDITION EQUAL TO OR BETTER THAN ORIGINALLY FOUND.
- SOIL EROSION CONTROL SHALL BE IN ACCORDANCE WITH THESE DOCUMENTS.
- PROTECT EXISTING UTILITY LINES FROM DAMAGE. FOLLOW INDIVIDUAL UTILITY'S RECOMMENDATIONS FOR UTILITY LINE PROTECTION.
- CONTRACTOR SHALL IMMEDIATELY REPORT ALL DAMAGE TO UTILITY LINES TO BOTH UTILITY COMPANY AND ENGINEER.
- ALL DAMAGE CAUSED TO EXISTING UTILITY LINES BY CONTRACTOR'S OPERATIONS SHALL BE REPAIRED BY THE CONTRACTOR TO COMPLETE SATISFACTION OF THE UTILITY COMPANY AND ENGINEER.
- LOCATION OF EXISTING UTILITIES IS APPROXIMATE. CONTRACTOR SHALL FIELD VERIFY EXACT LOCATIONS.
- CONTRACTOR IS RESPONSIBLE FOR CUT AND CAP OF EXISTING UTILITIES PRIOR TO ANY DEMOLITION.
- CONTRACTOR SHALL CONTACT LOUISIANA ONE CALL PRIOR TO COMMENCEMENT OF SITE EXCAVATION.

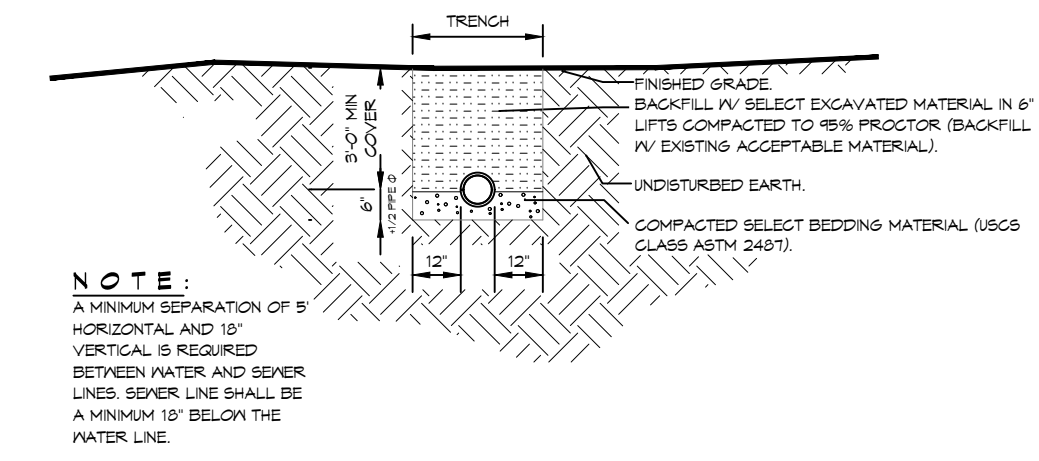
SITE UTILITIES LEGEND



1 **SITE UTILITIES PLAN**
SCALE: 1" = 20'

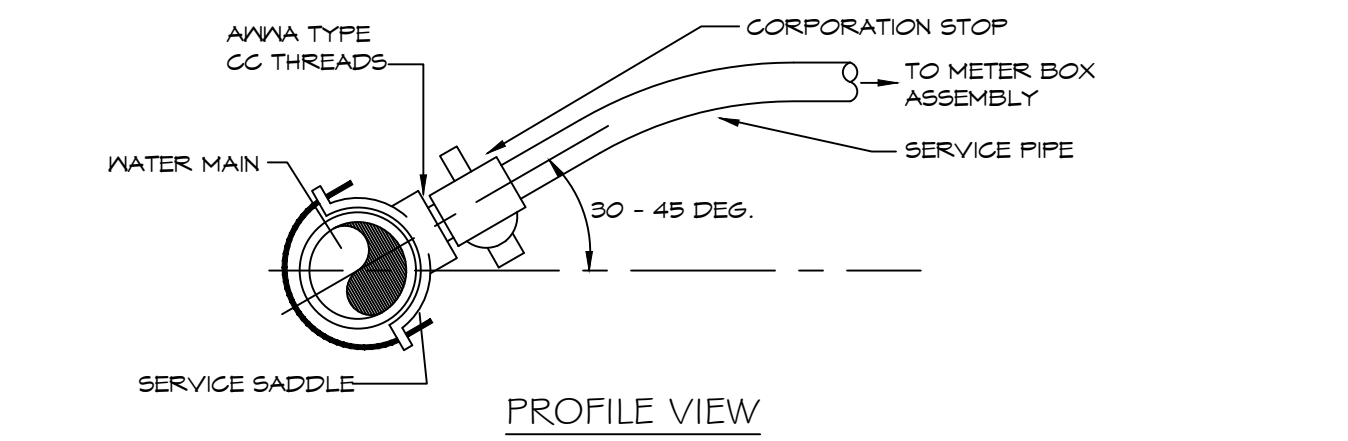


5 **DETAIL**
SCALE: N.T.S.



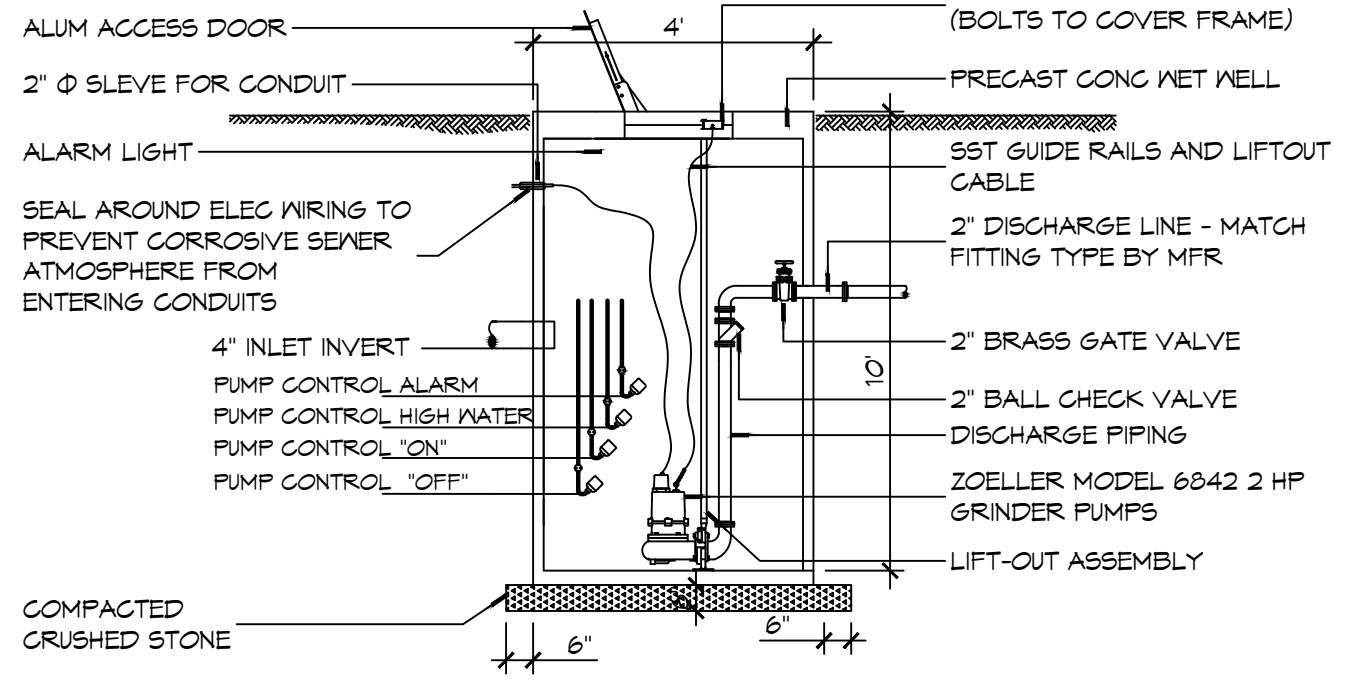
SEWER AND WATER SEPARATION

6 **WATER SERVICE CONNECTION**
SCALE: N.T.S.



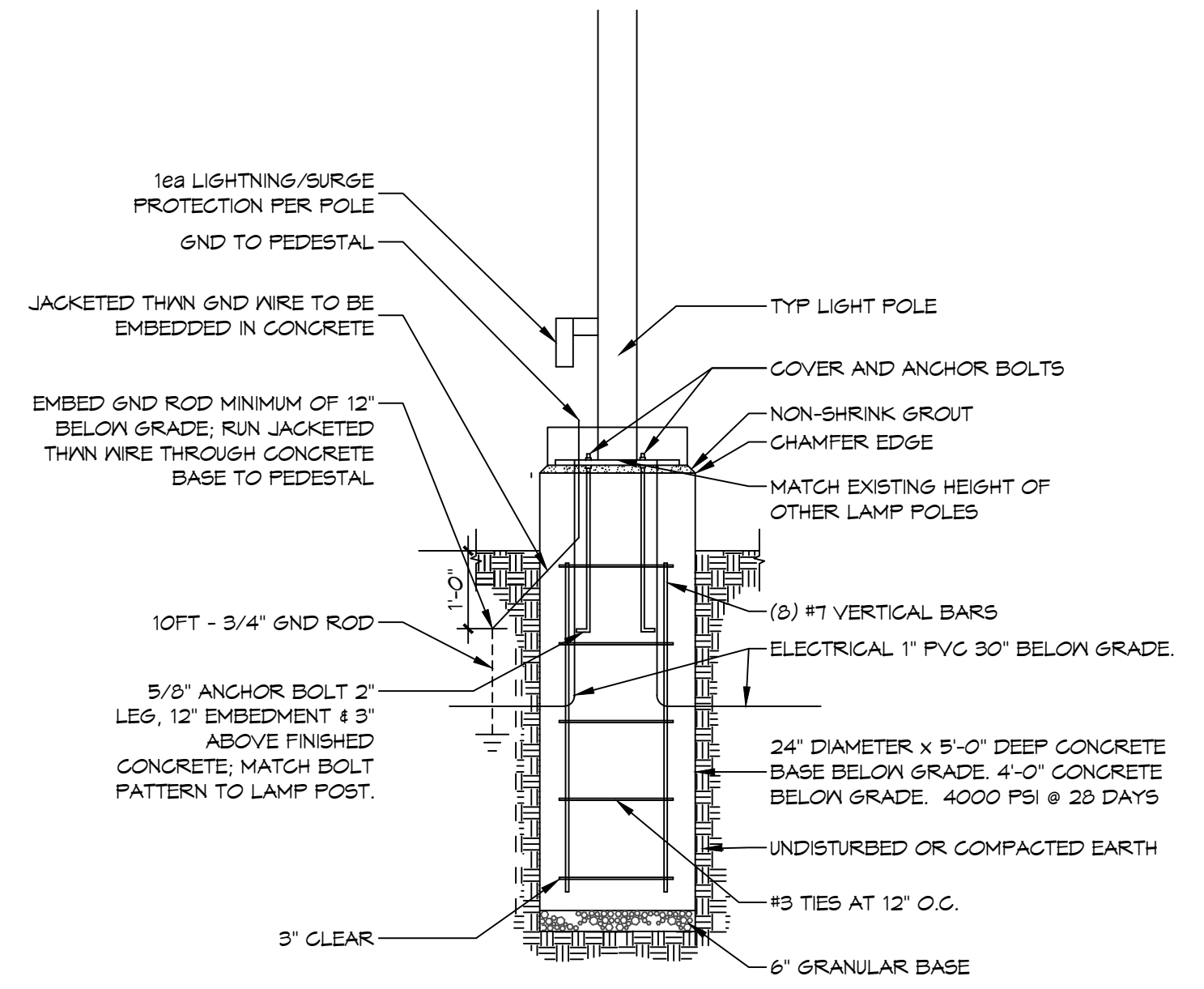
PROFILE VIEW

7 **GRINDER PUMP**
SCALE: N.T.S.



TYPICAL

8 **LIGHT POLE DETAIL**
SCALE: N.T.S.



DAMMON ENGINEERING, INC.
 LOUISIANA & MISSISSIPPI
 Chief Engineer: Brian Mistich, PE
 554 Old Spanish Trail
 Slidell, LA 70458
 www.dammonengineering.com
 info@dammonengineering.com
 PH: 985.649.5832

#	DESCRIPTION	DATE

CONTACT FOR ATMOS ENERGY
 Kathleen A DuFour
 Account Representative
 Atmos Energy Corporation
 Louisiana Division
 985-373-9111 Cell
 kathleen.dufour@atmosenergy.com

CONTACT FOR MAGNOLIA WATER
 Steve Ernst
 Director, Louisiana Regulatory Relations
 Email: sernst@caurgroup.com
 M:(985) 640-1355

NEW FIRE STATION #10
ST. TAMMANY FIRE PROTECTION
DISTRICT NO. 1
 246 LAKESHORE VISTA BLVD
 SLIDELL, LA 70461
 JOB No: 2519 DATE: 12-05-2025
 DRAWN BY: CKD CHECKED BY: BAK

SHEET TITLE:
 SITE PLAN - SITE UTILITIES AND DETAILS

DRAWING NUMBER:
C103

SHEET No: 7 of 37