

# DOOR SCHEDULE

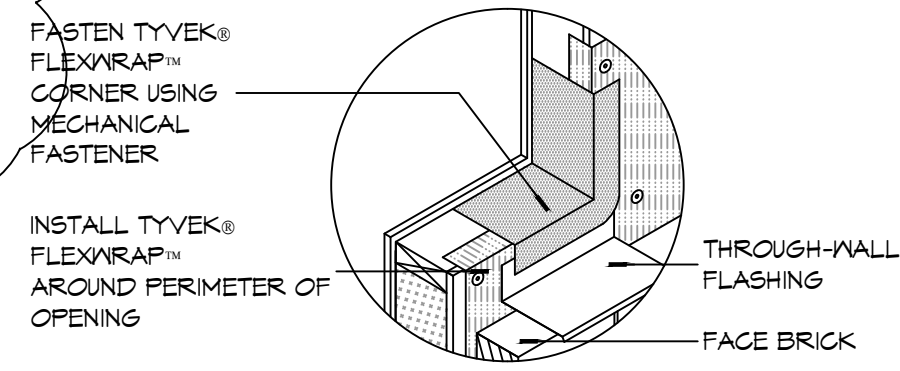
MK	WIDTH	HEIGHT	TYPE	THICK	DOOR MATERIAL	FRAME MATERIAL	FRAME TYPE	HEAD	JAMB	SILL	FR	HWR	REMARKS
101A	3'-0"	T-0"	FG	1 3/4"	ALUM	ALUM	F4	21/A502	9/A502 & 10/A502	7/A502	NR	01	
101B	3'-0"	T-0"	F	1 3/4"	INSUL MTL	HM	F1	15/A502	6/A502	1/A502	45 MIN	07	
102A	3'-0"	T-0"	GG	1 3/4"	ALUM	ALUM	F3	21/A502	10/A502	7/A502	NR	01	
103A	3'-0"	T-0"	F	1 3/4"	SC WOOD	HM	F2	13/A502	4/A502	8/A502	20 MIN	02	SMOKE TIGHT
104A	3'-0"	T-0"	F	1 3/4"	SC WOOD	HM	F2	14/A502	5/A502	8/A502	NR	03	
105A	(2) 2'-0"	T-0"	LL	1 3/4"	SC WOOD	HM	F2	14/A502	5/A502	8/A502	NR	06A	
107A	3'-0"	T-0"	F	1 3/4"	SC WOOD	HM	F2	13/A502	4/A502	8/A502	20 MIN	02	SMOKE TIGHT
109A	(2) 1'-6"	T-0"	LL	1 3/4"	SC WOOD	HM	F2	14/A502	5/A502	8/A502	NR	06	
109B	(2) 1'-6"	T-0"	LL	1 3/4"	SC WOOD	HM	F2	14/A502	5/A502	8/A502	NR	06	
109C	(2) 1'-6"	T-0"	LL	1 3/4"	SC WOOD	HM	F2	14/A502	5/A502	8/A502	NR	06	
113A	3'-0"	T-0"	F	1 3/4"	SC WOOD	HM	F2	13/A502	4/A502	8/A502	20 MIN	05	SMOKE TIGHT
114A	3'-0"	T-0"	F	1 3/4"	SC WOOD	HM	F2	14/A502	5/A502	8/A502	NR	04	
116A	2'-4"	T-0"	F	1 3/4"	SC WOOD	HM	F2	14/A502	5/A502	8/A502	NR	13	
117A	14'-0"	14'-0"	O2	1 1/2"	INSUL MTL	MTL	N/A	20/A502	19/A502	1/A502	NR	01	NOT USED
117B	14'-0"	14'-0"	O2	1 1/2"	INSUL MTL	MTL	N/A	20/A502	19/A502	1/A502	NR	01	NOTE 1, CHI M# 3324 POWDER COATED, LIFT MASTER 3/4 HP, 894 REMOTE
117C	12'-0"	14'-0"	O2	1 1/2"	INSUL MTL	MTL	N/A	20/A502	19/A502	1/A502	NR	01	NOTE 1, CHI M# 3324 POWDER COATED, LIFT MASTER 3/4 HP, 894 REMOTE
117D	3'-0"	T-0"	F	1 3/4"	INSUL MTL	HM	F2	18/A502	11/A502	2/A502	NR	12	
118A	3'-0"	T-0"	L	1 3/4"	METAL	HM	F2	12/A502	3/A502	7/A502	NR	08	
119A	3'-0"	T-0"	L	1 3/4"	METAL	HM	F2	12/A502	3/A502	7/A502	NR	03	
120A	3'-0"	T-0"	L	1 3/4"	METAL	HM	F2	12/A502	3/A502	7/A502	NR	09	
121A	14'-0"	14'-0"	O2	1 1/2"	INSUL MTL	MTL	N/A	20/A502	19/A502	1/A502	NR	01	NOTE 1, CHI M# 3324 POWDER COATED, LIFT MASTER 3/4 HP, 894 REMOTE
121B	14'-0"	14'-0"	O2	1 1/2"	INSUL MTL	MTL	N/A	20/A502	19/A502	1/A502	NR	01	NOTE 1, CHI M# 3324 POWDER COATED, LIFT MASTER 3/4 HP, 894 REMOTE
122A	3'-0"	T-0"	L	1 3/4"	MTL	HM	F2	11/A502	16/A502	7/A502	NR	09	
123A	3'-0"	T-0"	L	1 3/4"	MTL	HM	F2	11/A502	16/A502	7/A502	NR	09	
124A	-	-	-	-	-	-	-	-	-	-	-	-	NOT USED
124B	3'-0"	T-0"	O1	1 1/2"	MTL	MTL	N/A	20/A502	19/A502	1/A502	NR	01	MANUAL OPERATION, CHI

# WINDOW SCHEDULE

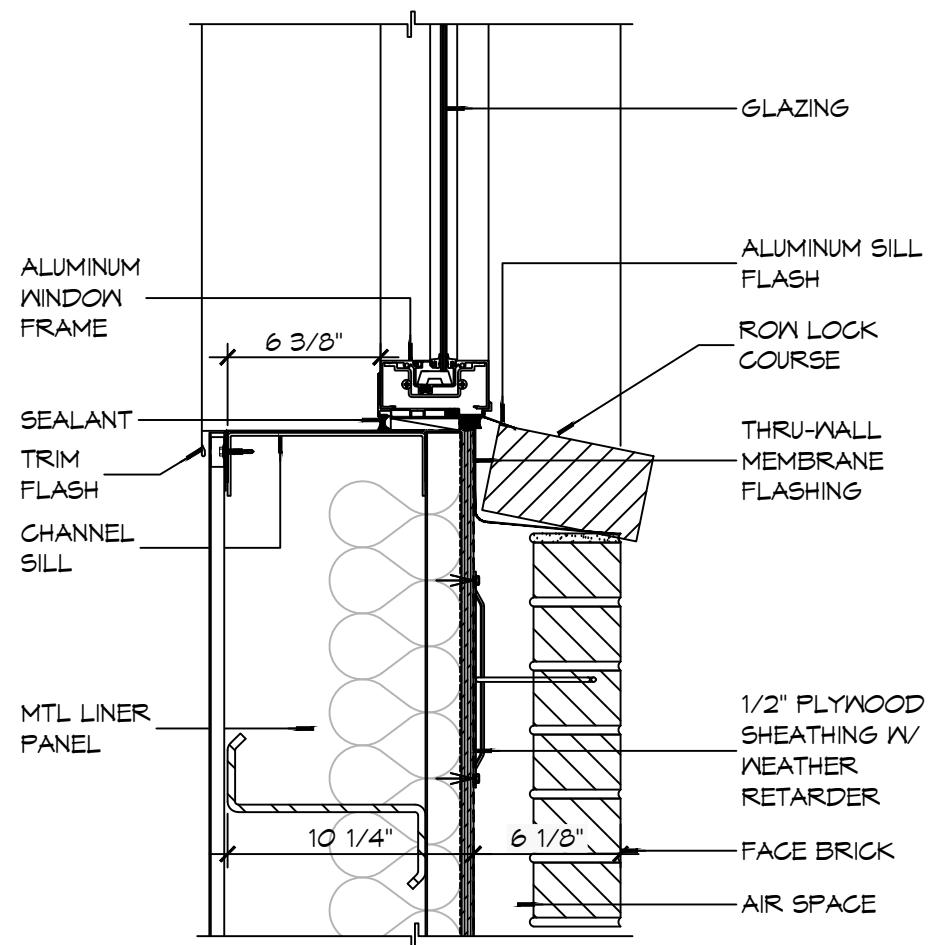
MK	SIZE (WxH)	FRAME	TYPE	GLAZING	REMARKS
A	3'-0"x4'-0"	ALUM	SINGLE HUNG	IMPACT	BLACK FRAME
B	N/A	N/A	N/A	N/A	N/A
C	3'-0"x4'-0"	ALUM	SINGLE HUNG	IMPACT	BLACK FRAME, METAL CHANNEL JAMBS AND HEADERS INSTEAD OF WOOD STUD FRAMING
D	3'-0"x4'-0"	ALUM	SINGLE HUNG	IMPACT	OBSOLETE/TRANSLUCENT GLASS IV/BLACK FRAME
E	3'-0"x5'-6"	ALUM	SINGLE HUNG	IMPACT	BLACK FRAME

NOTE: ALL EXTERIOR WINDOWS AND DOOR ASSEMBLES TO BE RATED FOR 140 MPH WINDS AND SHALL BE MISSILE IMPACT RESISTANT.

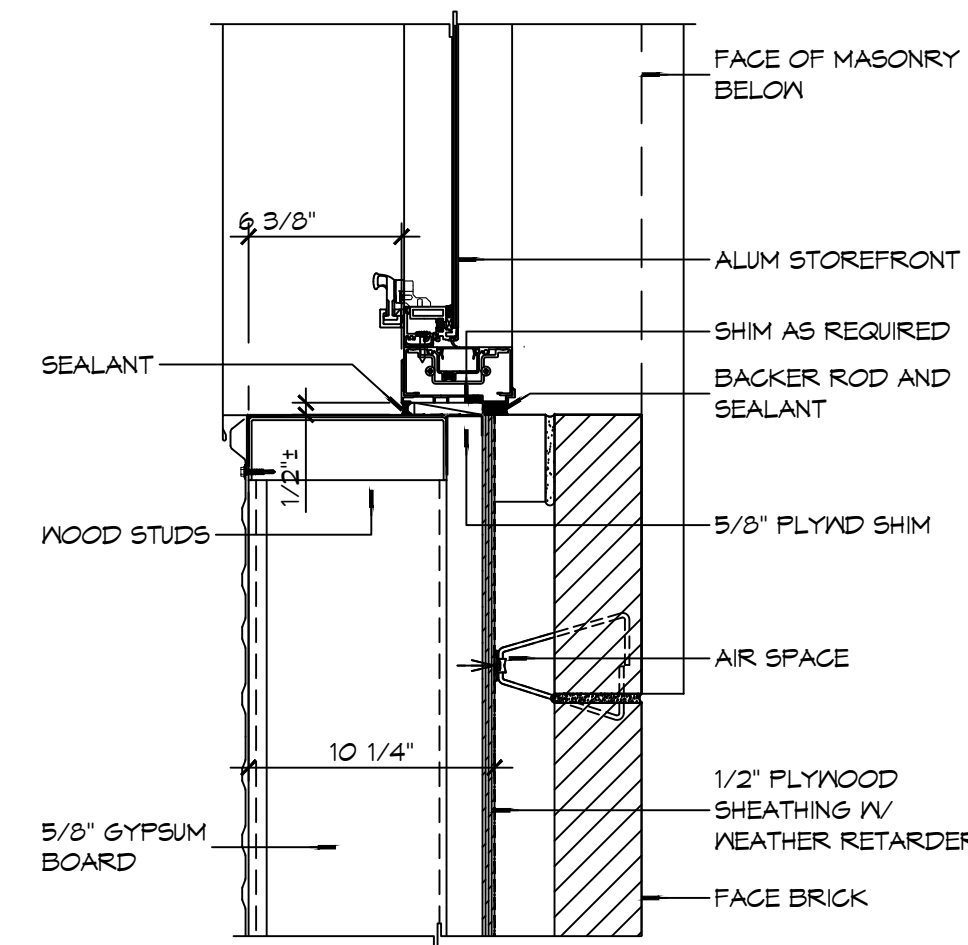
NOTE: DOORS IN A REQUIRED MEANS OF EGRESS SERVING ANY ASSEMBLY AREA HAVING AN OCCUPANT LOAD OF 50 OR MORE PERSONS SHALL NOT BE EQUIPPED WITH A LATCH OR LOCK OTHER THAN PANIC HARDWARE OR FIRE EXIT HARDWARE.



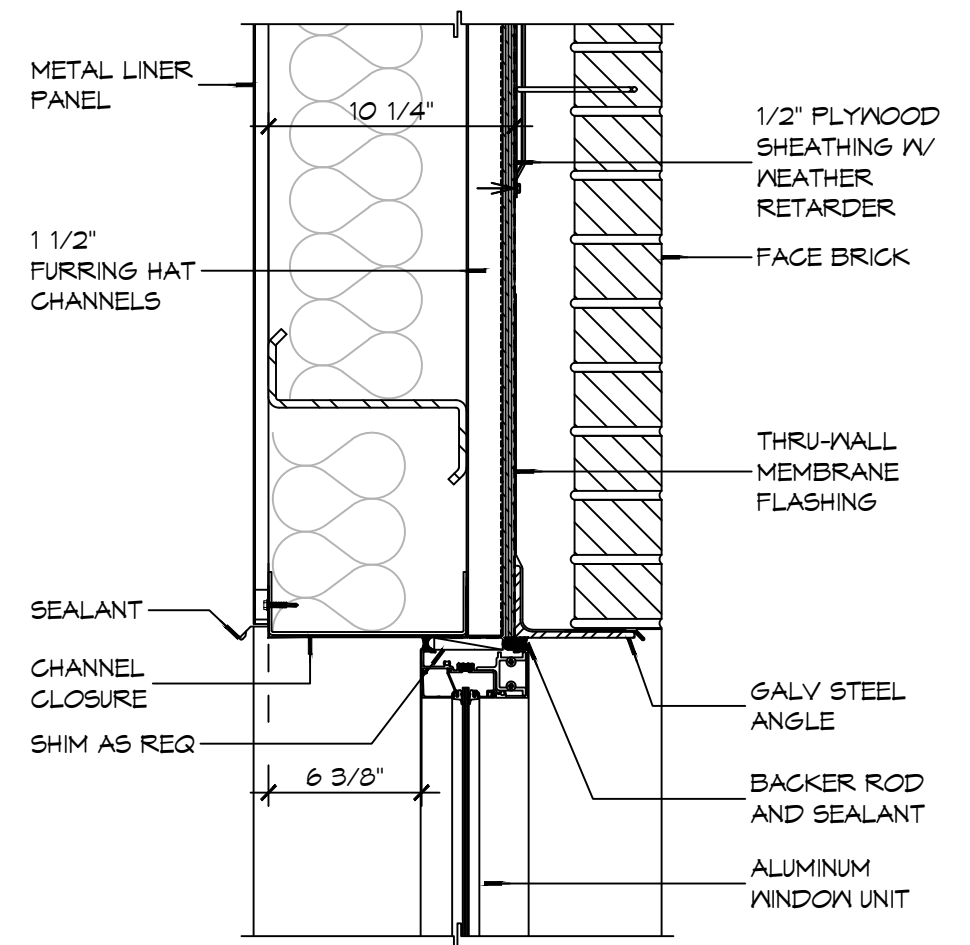
**10 DETAIL**  
SCALE: NTS  
TYPICAL WINDOW SILL FLASHING



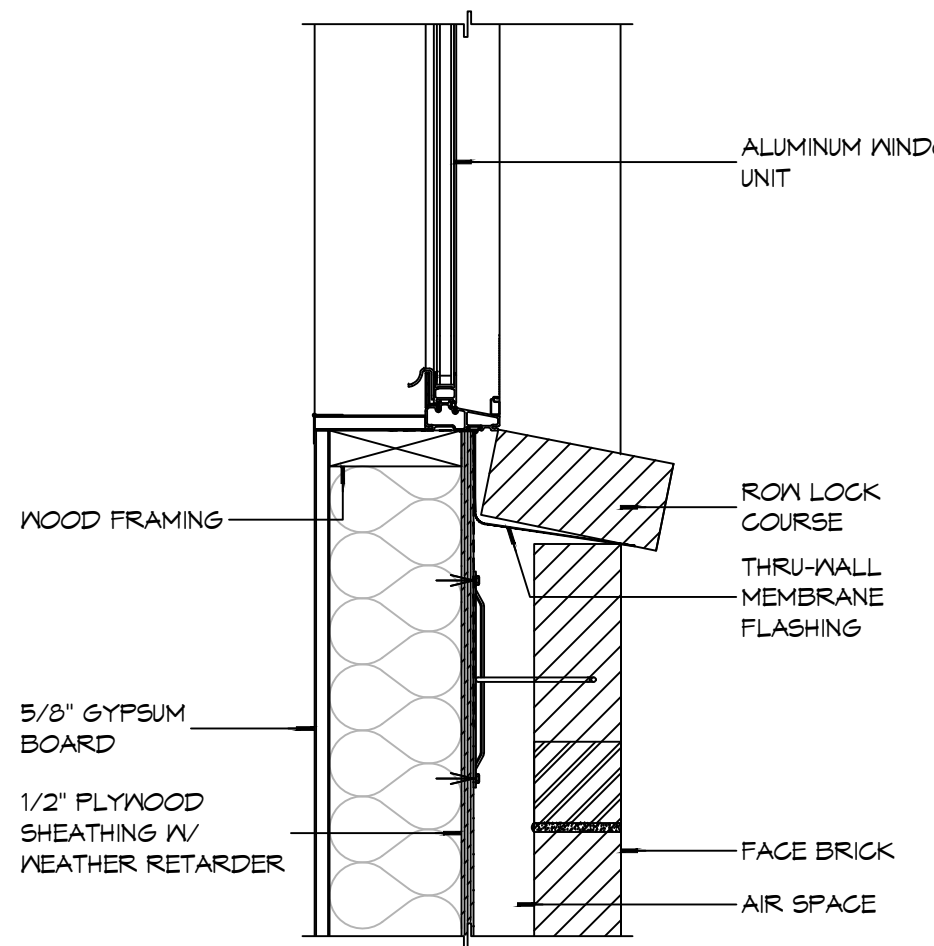
**9 WINDOW DETAIL**  
SCALE: 1 1/2" = 1'-0"  
SILL



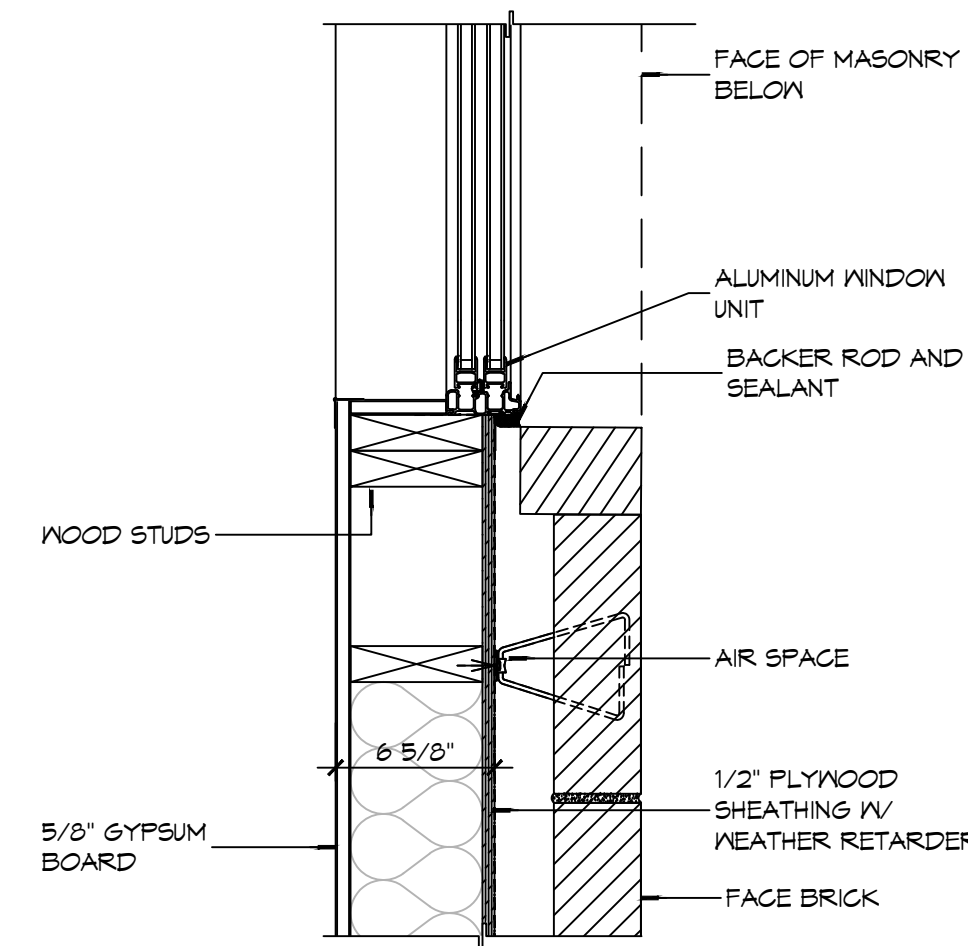
**8 WINDOW DETAIL**  
SCALE: 1 1/2" = 1'-0"  
JAMB



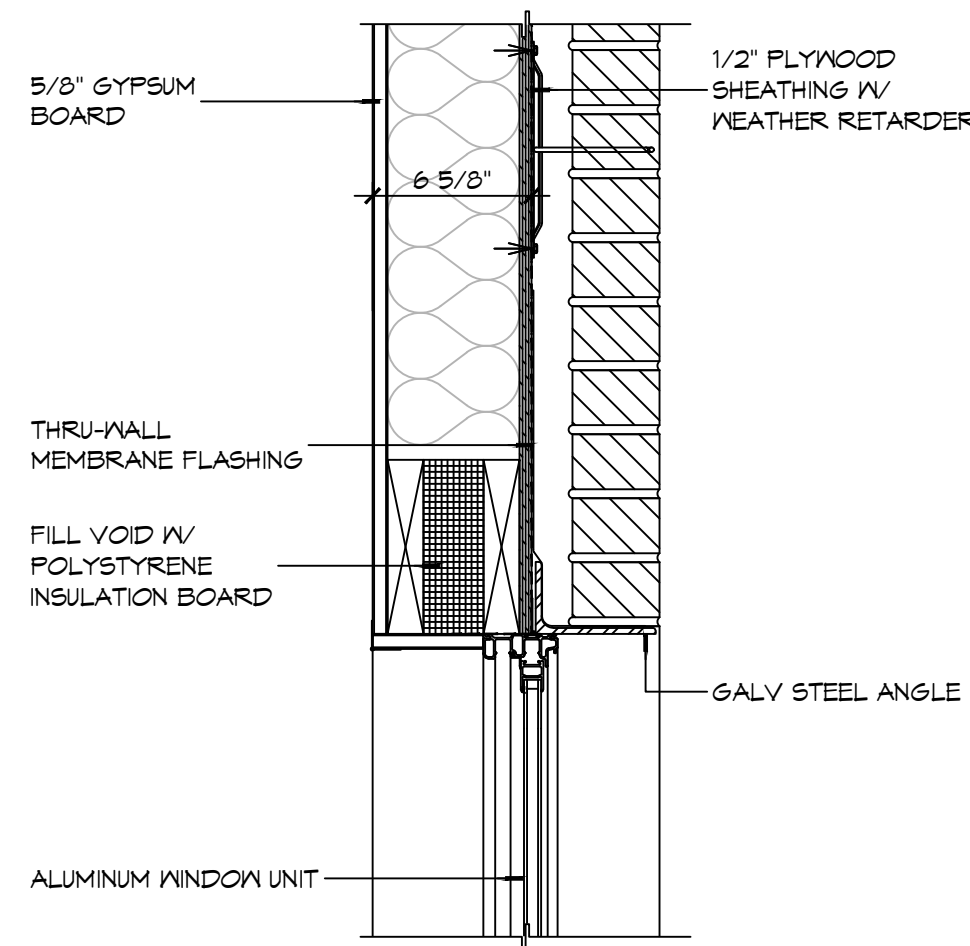
**7 WINDOW DETAIL**  
SCALE: 1 1/2" = 1'-0"  
HEAD



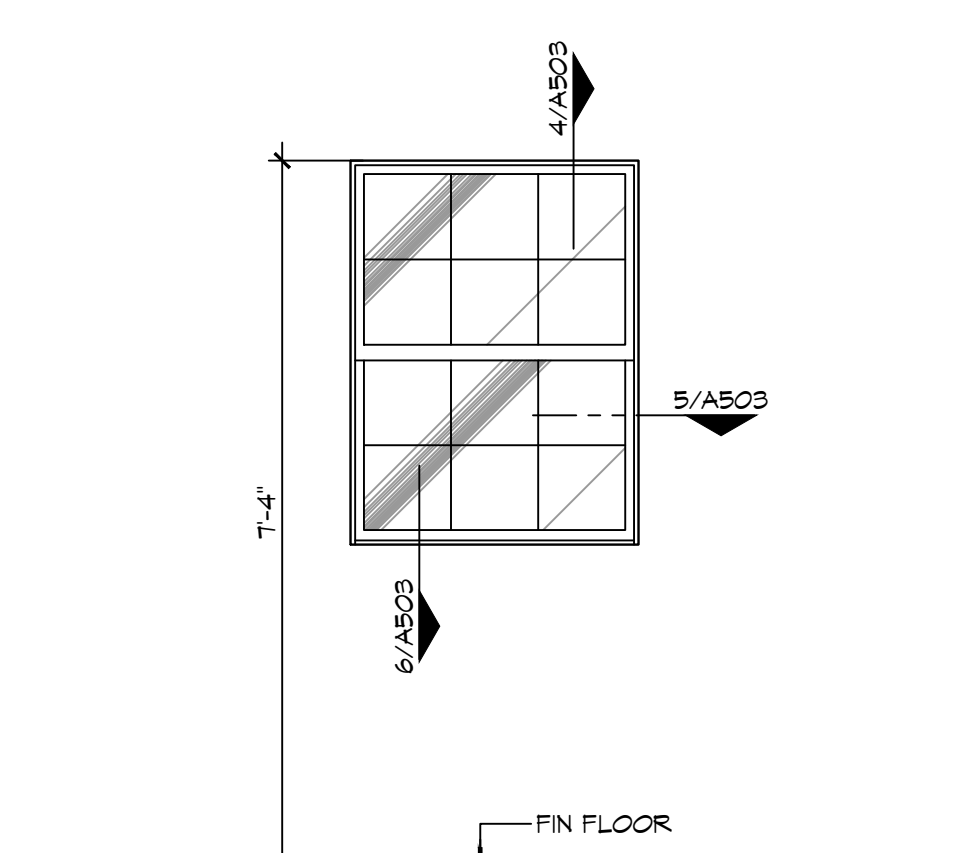
**6 WINDOW DETAIL**  
SCALE: 1 1/2" = 1'-0"  
SILL



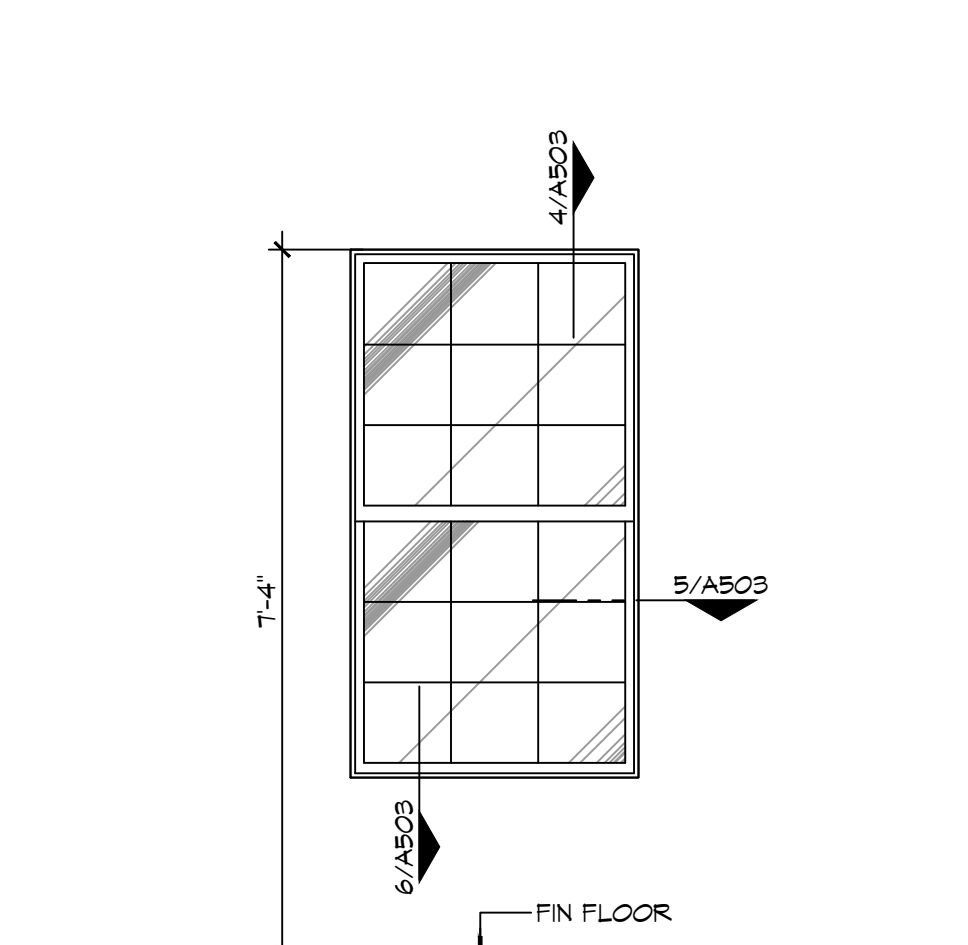
**5 WINDOW DETAIL**  
SCALE: 1 1/2" = 1'-0"  
JAMB



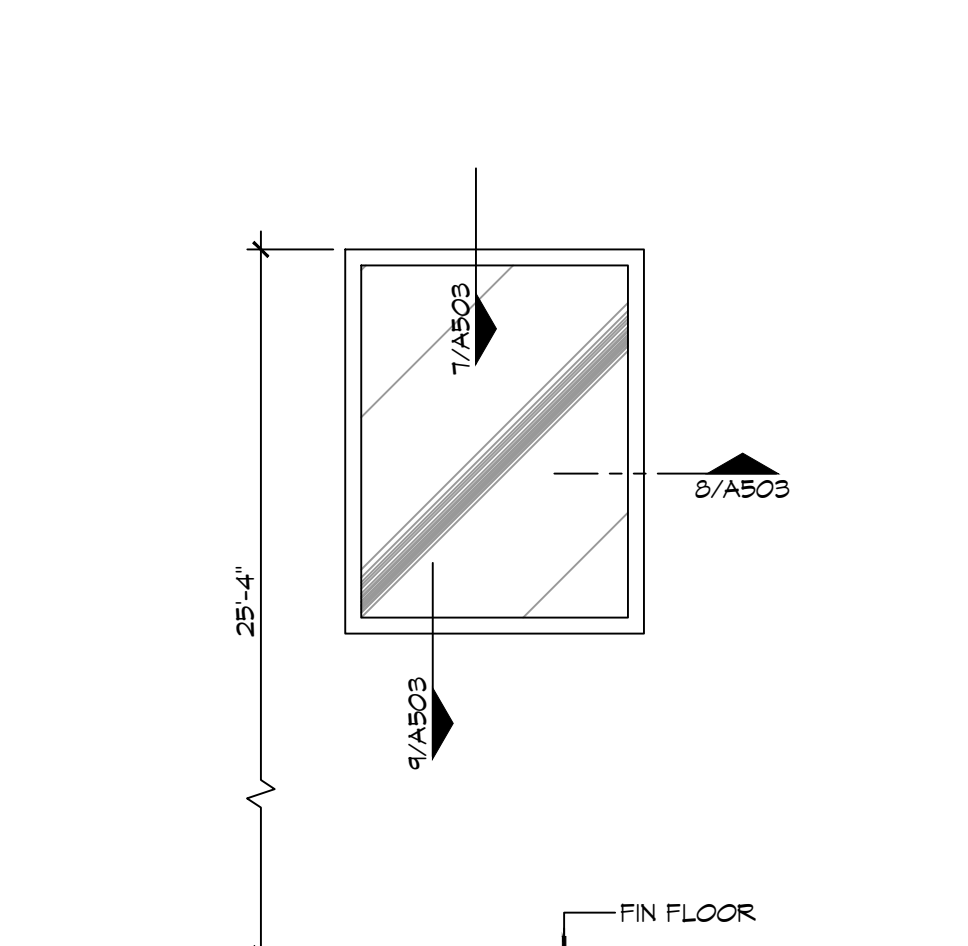
**4 WINDOW DETAIL**  
SCALE: 1 1/2" = 1'-0"  
HEAD



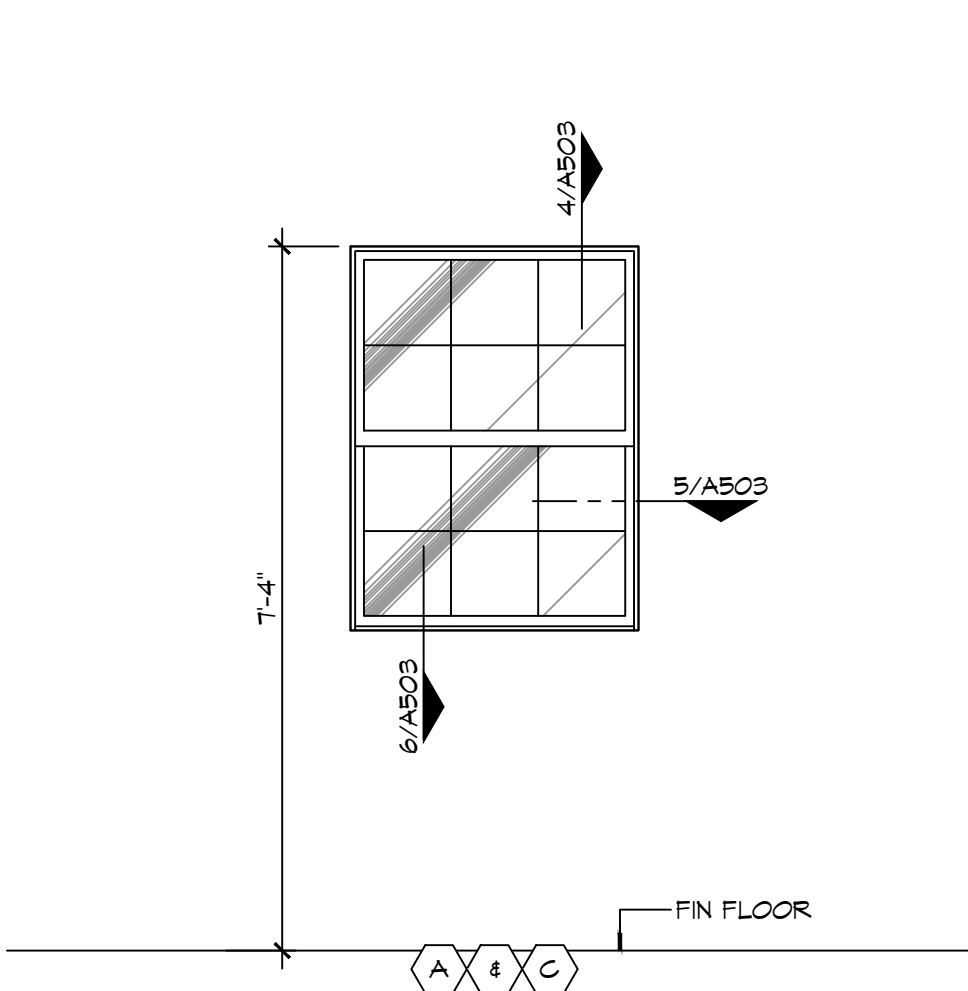
**3 WINDOW TYPES**  
SCALE: 1/2" = 1'-0"



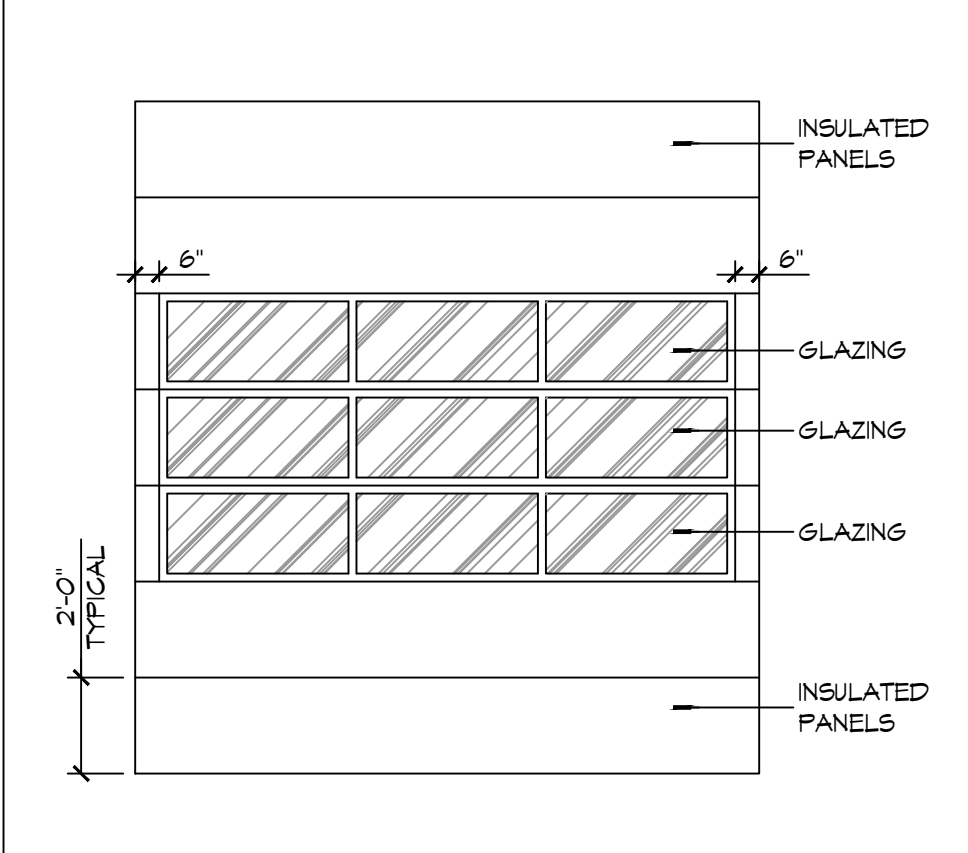
**6 WINDOW TYPES**  
SCALE: 1/2" = 1'-0"



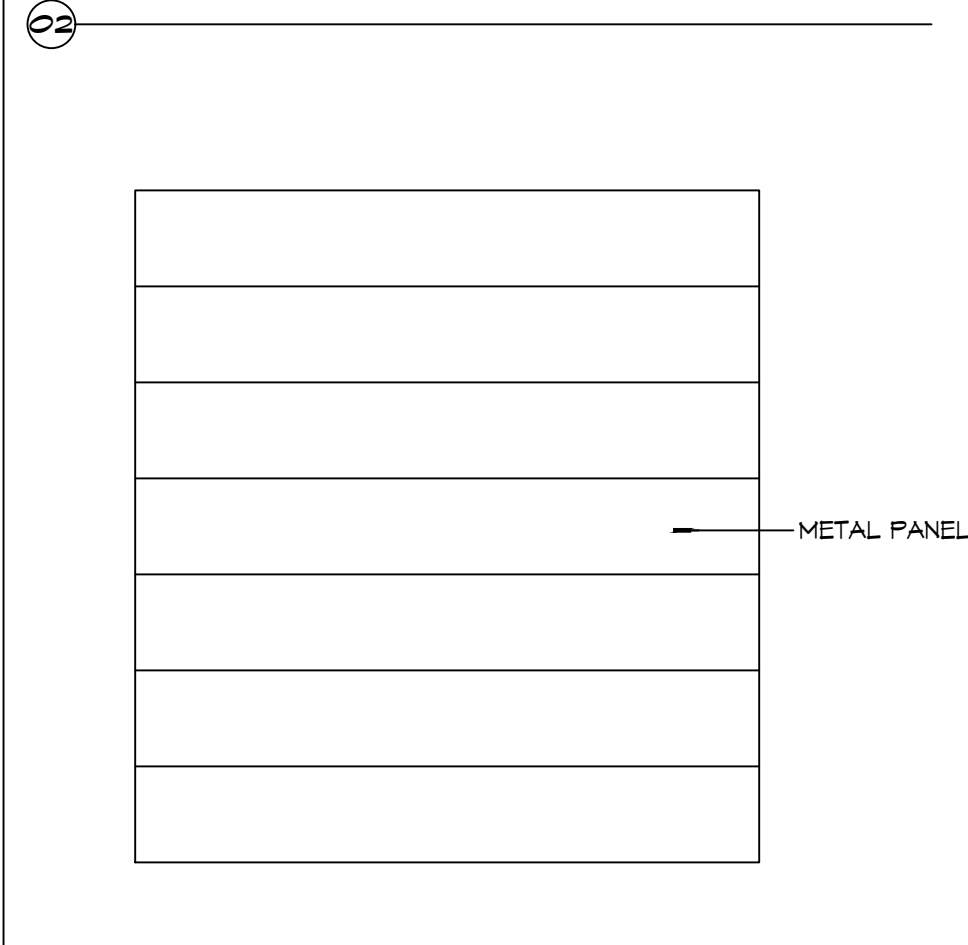
**7 WINDOW TYPES**  
SCALE: 1/2" = 1'-0"



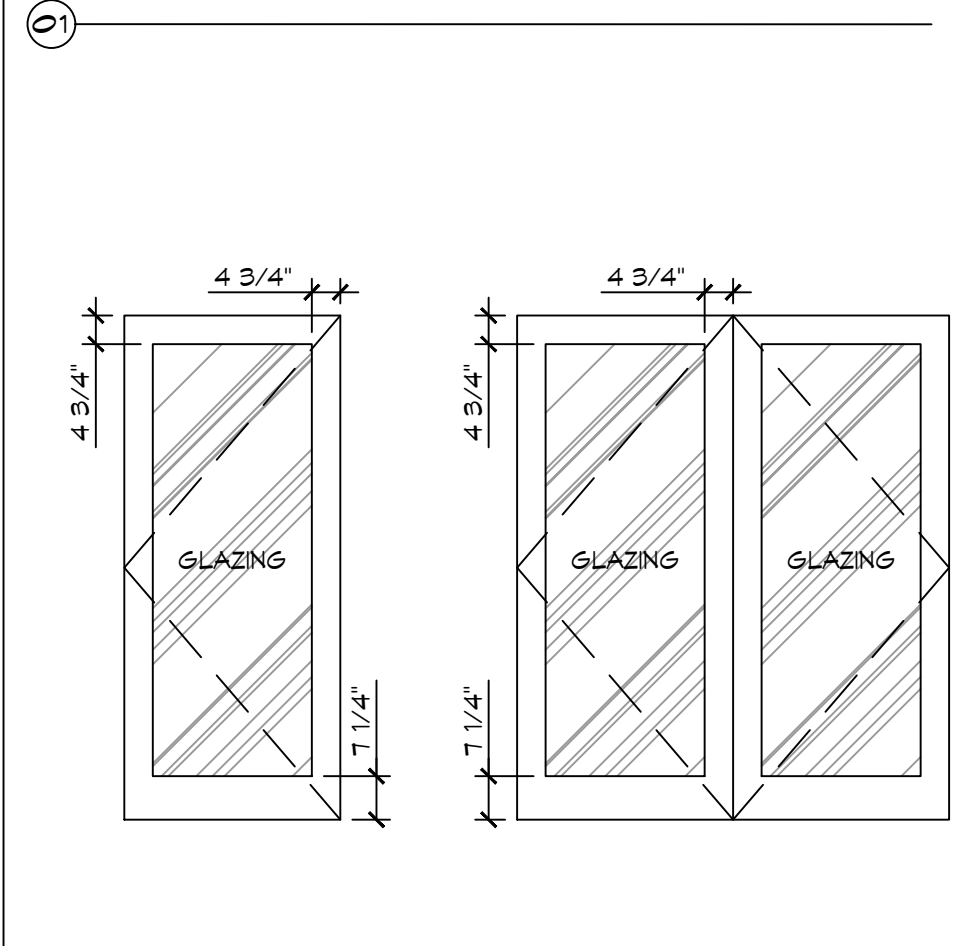
**8 WINDOW TYPES**  
SCALE: 1/2" = 1'-0"



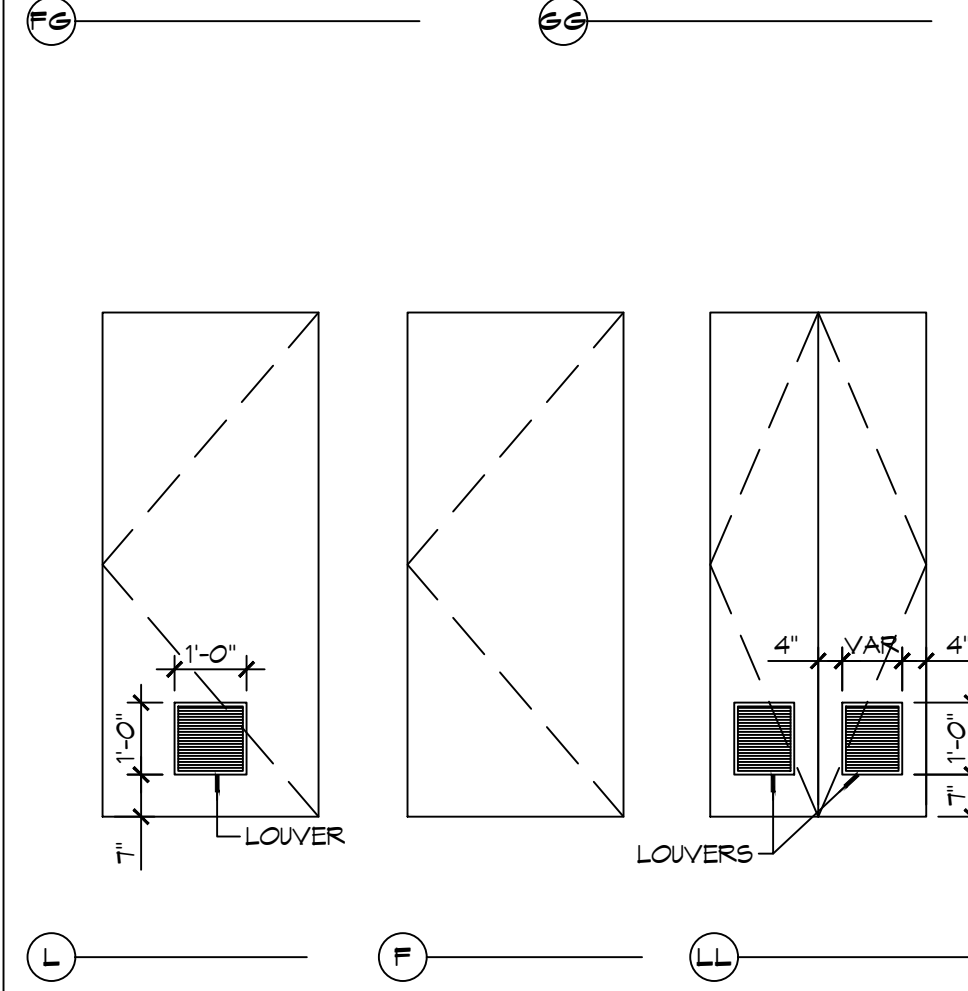
**1 FRAME TYPES**  
SCALE: NTS



**2 DOOR TYPES**  
SCALE: NTS



**3 DOOR TYPES**  
SCALE: NTS



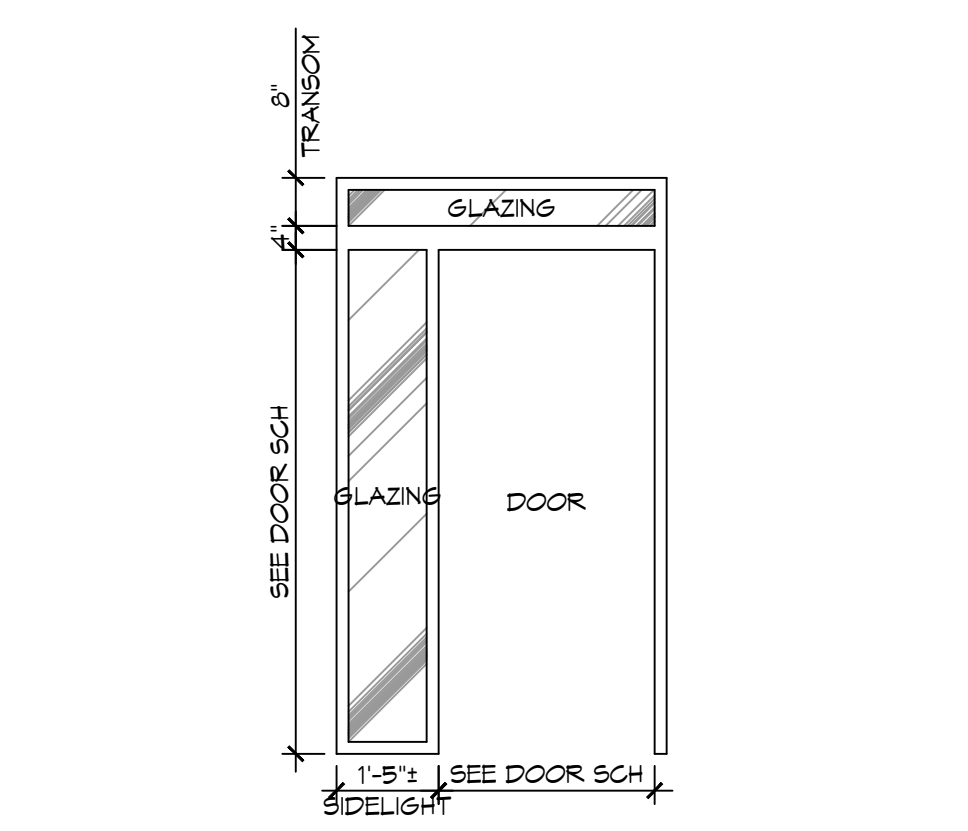
**4 DOOR TYPES**  
SCALE: NTS

# GENERAL OPENING SCHEDULE NOTES

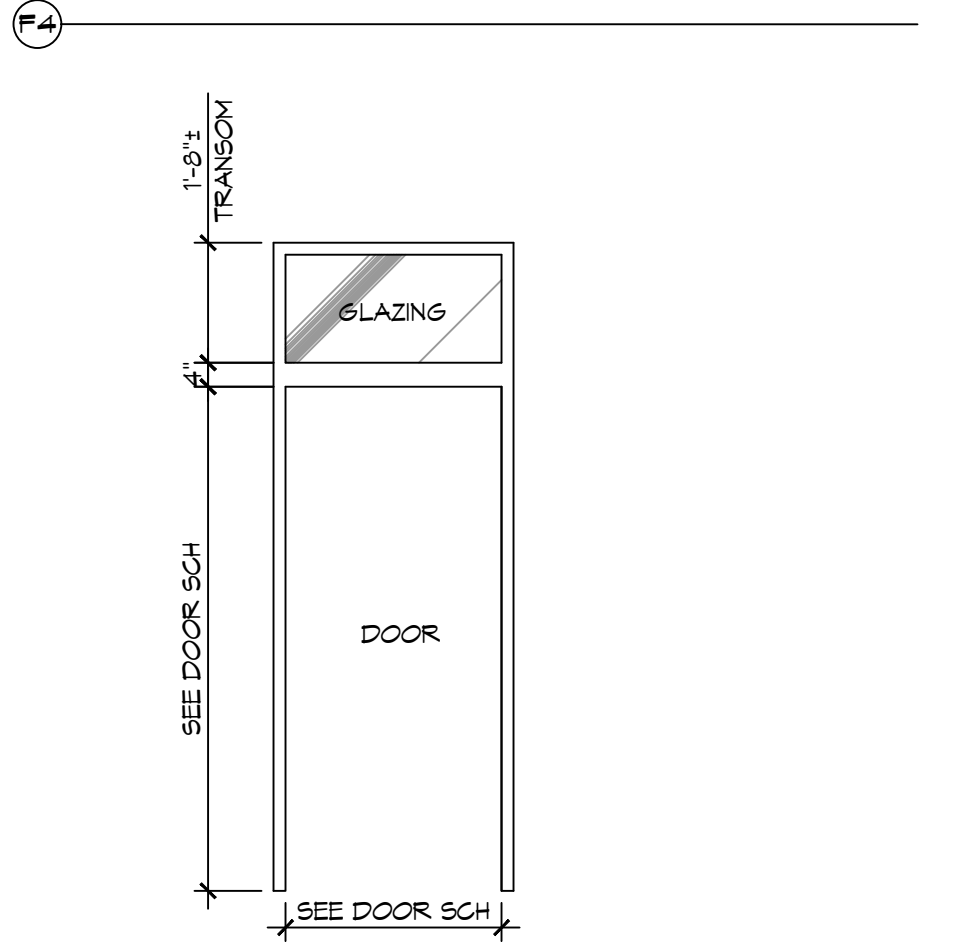
- CONTRACTOR SHALL VERIFY ROUGH OPENING DIMENSIONS WITH MANUFACTURER'S REQUIREMENTS PRIOR TO CONSTRUCTION.
- ALL EGRESS DOORS SHALL BE READILY OPENABLE FROM THE EGRESS SIDE WITHOUT THE USE OF A KEY OR SPECIAL KNOWLEDGE OR EFFORT.
- ALL DOORS NOT SPECIFIED TO RECEIVE A THRESHOLD SHALL HAVE A 3/4" UNDERCUT UNLESS NOTED OTHERWISE.
- DO NOT PAINT OVER FIRE-RATED LABELS, TAGS, EMBOSSEMENTS, ETC. ON DOOR FRAMES OR DOORS.
- INSTALL WINDOWS, DOORS AND BRICK VENEER PER CODE.

# DOOR NOTES

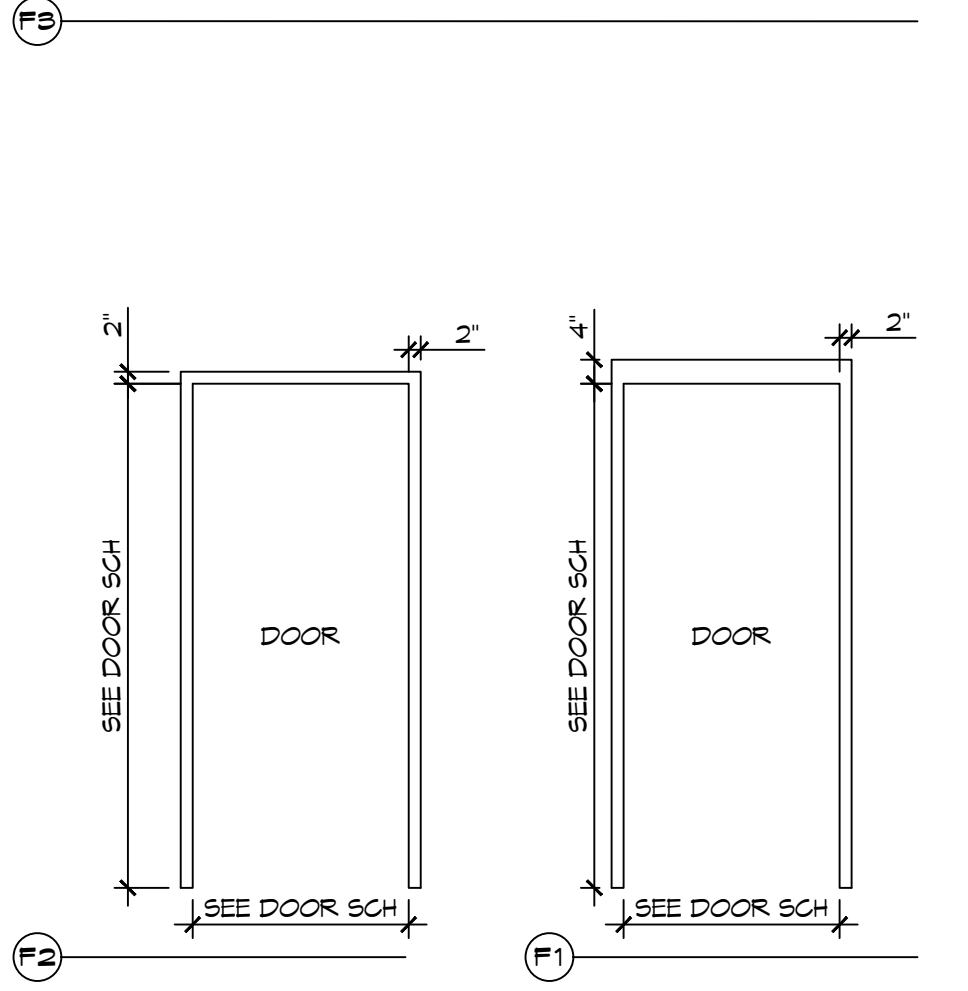
- DOOR WIDTH REFERS TO MASONRY OPENING - COORDINATE UNIT WIDTH WITH JAMB DETAIL AND MANUFACTURER'S REQUIREMENTS.
- PROVIDE 3/4" DOOR UNDERCUT AT ALL INTERIOR DOORS NOT EQUIPPED WITH A THRESHOLD OR SMOKE DOOR AND OR WHERE NOTED OTHERWISE.



**1 FRAME TYPES**  
SCALE: NTS



**2 DOOR TYPES**  
SCALE: NTS



**3 DOOR TYPES**  
SCALE: NTS

**DAMMON ENGINEERING, INC.**  
LOUISIANA & MISSISSIPPI  
Chief Engineer: Brian Mistich, PE  
554 Old Spanish Trail  
Slidell, LA 70458  
www.dammonengineering.com  
info@dammonengineering.com  
PH: 985.649.5832

#	DESCRIPTION	DATE
1	REVISED WINDOW SCHEDULE	1-25-26



NEW FIRE STATION #10  
ST. TAMMANY FIRE PROTECTION DISTRICT NO. 1  
246 LAKESHORE VISTA BLVD  
SLIDELL, LA 70461  
JOB No: 2519 DATE: 1-16-2026  
DRAWN BY: JMS CHECKED BY: CKD  
SHEET TITLE: DOOR AND WINDOW SCHEDULES, DOOR, WINDOW TYPES, & WINDOW DETAILS  
DRAWING NUMBER: **A503**  
SHEET No: 24 of 31