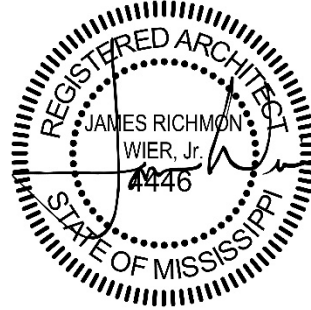


APRIL 03, 2018

BULLETIN NO. 05

POSITIVE STEPS FERTILITY

149 Fountains Blvd.
Madison, MS
WBA Project No. 2217



NOTICE TO ALL DOCUMENT HOLDERS:

The following additions, deletions, changes and clarifications to the drawings and specifications are to be included as part of the Contract Documents.

The user has requested a redesign in vestibule to Waiting Room 101 and added millwork. See enclosed revised drawings.

Architectural

**ITEM NO. 1 A9.0 Interior Elevations
 A9.1 Interior Elevations**
Revise per the enclosed sheets.

ITEM NO. 2 ADA Required access to Waiting Restroom 101.
Revise per elevation 2/A9.0.

NO MORE ITEMS

Please provide a detailed proposal for item No.1 above if this work requires an adjustment in the Contract Sum or Contract Time. Costs related to item No. 2 shall be invoiced to the Architect.

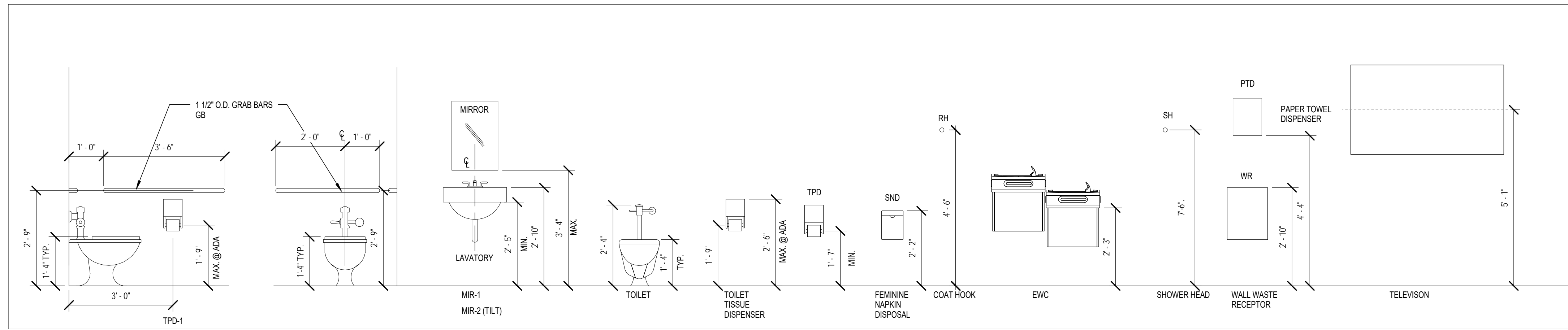
Encl: Revised Construction Documents Sheets A9.0 & A9.1

cc: Paula DeYoung
 Bobby Edens
 Jamie Wier
 Sully Clemmer
 Wade Thompson
 File 2217.D6/Bulletins

POSITIVE STEPS
FERTILITY, DR. J.
PRESTON PARRY

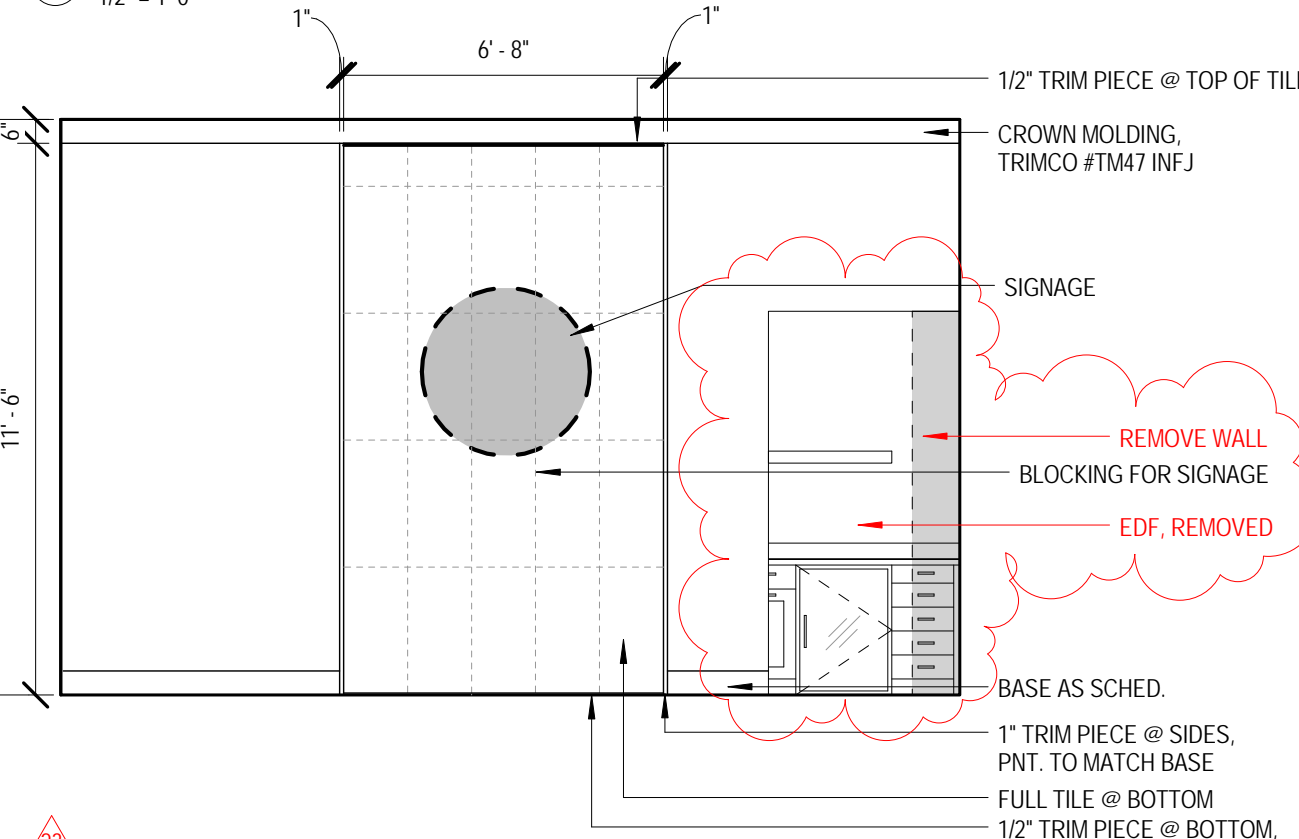
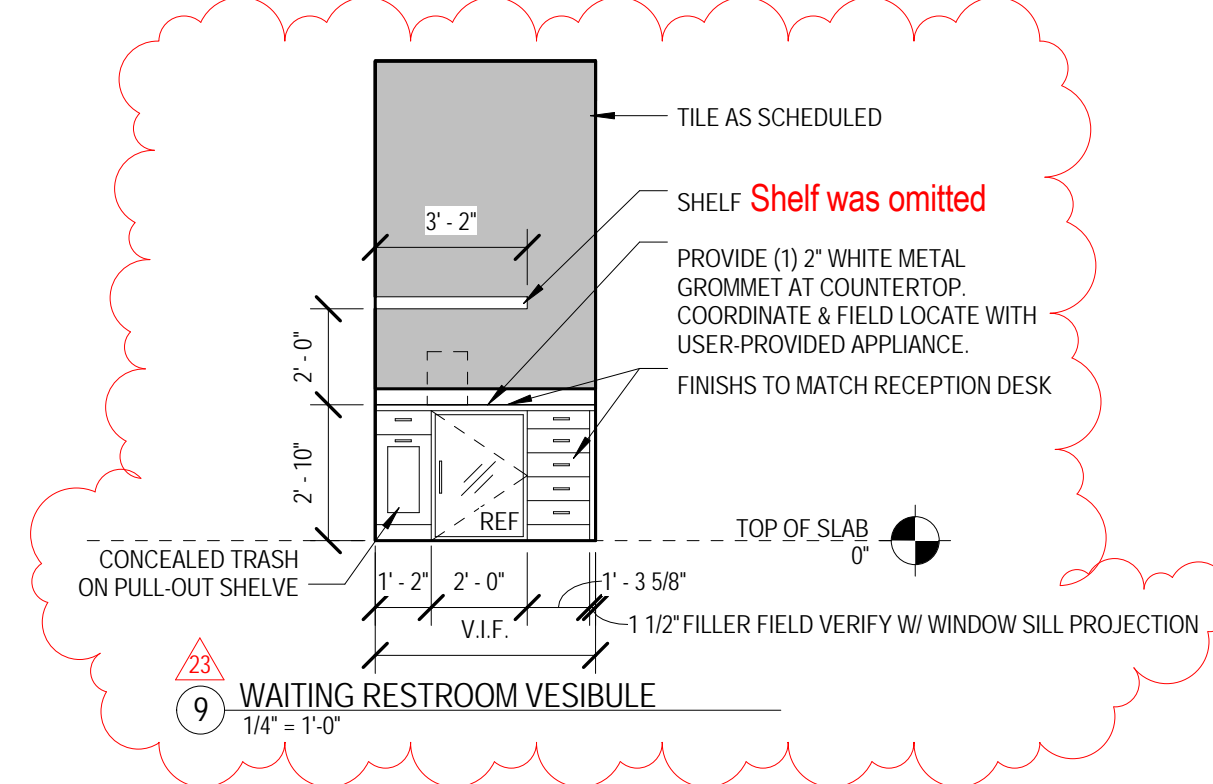
OWNER/DEVELOPER: DIANA
FOUNTAINS, LLC
OWNER CONSULTANT:
EVERETT CONSULTING GROUP,
LLC
GENERAL CONTRACTOR:
PROBITY CONTRACTING
GROUP, LLC

NOTES:
PROVIDE STIFFENERS, BRACING, BACKING PLATES AND BLOCKING REQUIRED FOR SECURE INSTALLATION OF TOILET PARTITIONS, DOORS AND DOOR HARDWARE INCLUDING WALL-MOUNTED DOOR STOPS, HANDRAILS, WALL-MOUNTED SHELVES, OPERABLE PARTITIONS, MISCELLANEOUS EQUIPMENT, AND SUSPENDED MECHANICAL AND ELECTRICAL EQUIPMENT.



TYPICAL TOILET ACCESSORIES MOUNTING

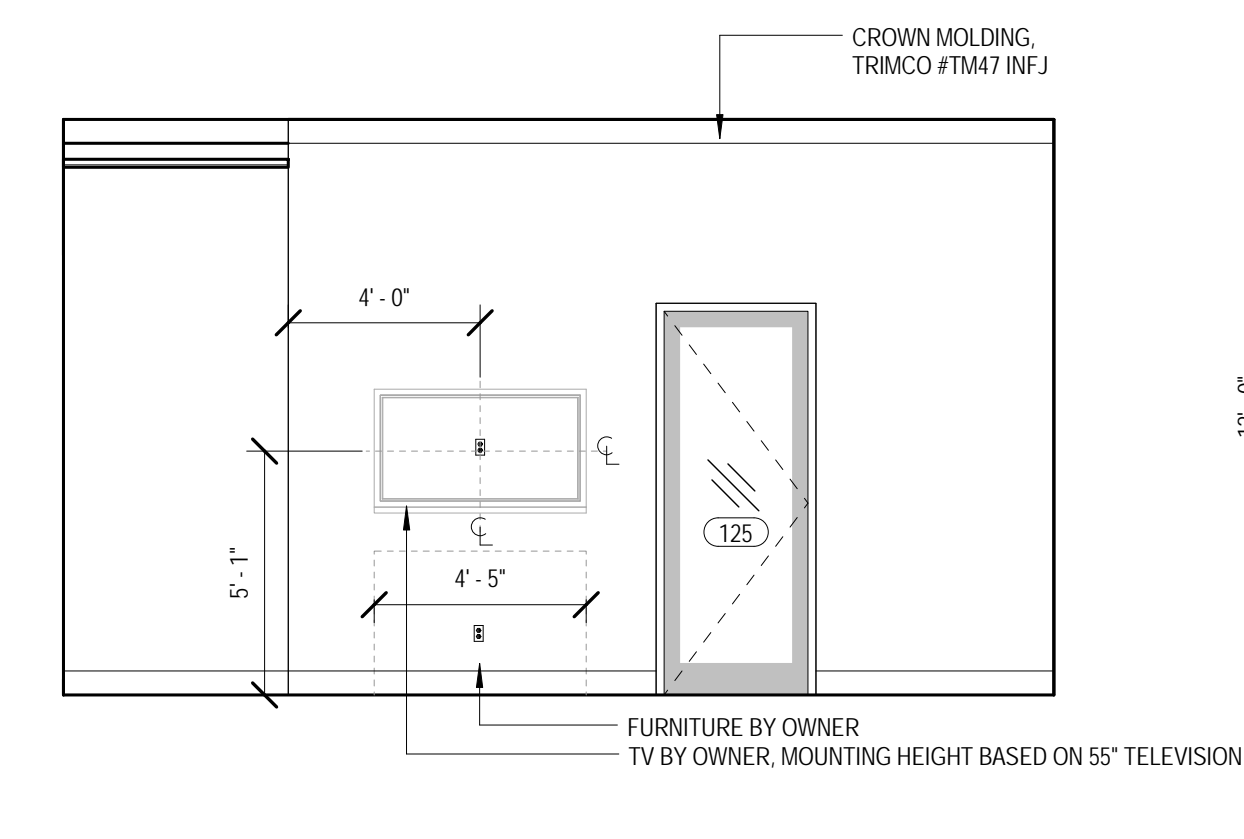
1 HEIGHTS
1/2" = 1'-0"



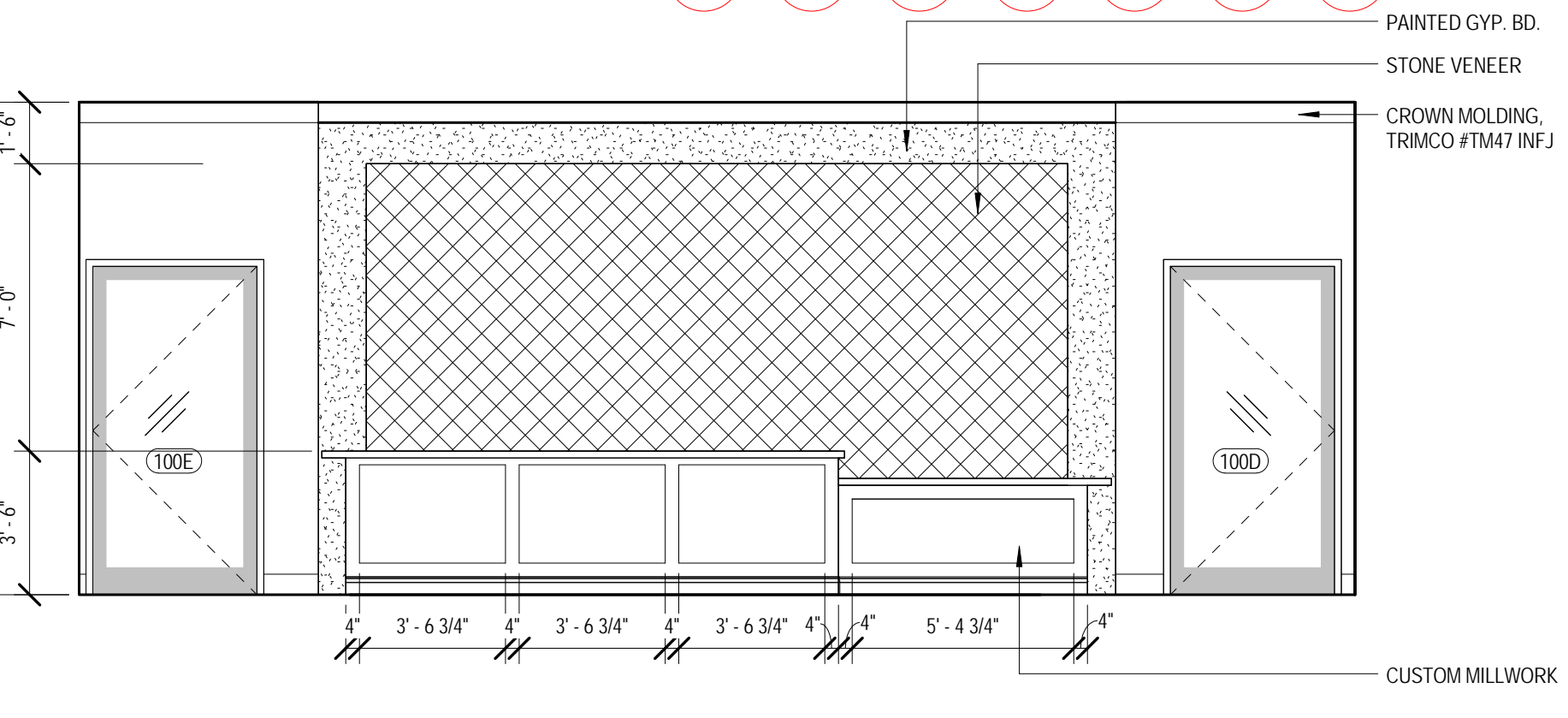
2 WAITING NORTH
1/4" = 1'-0"



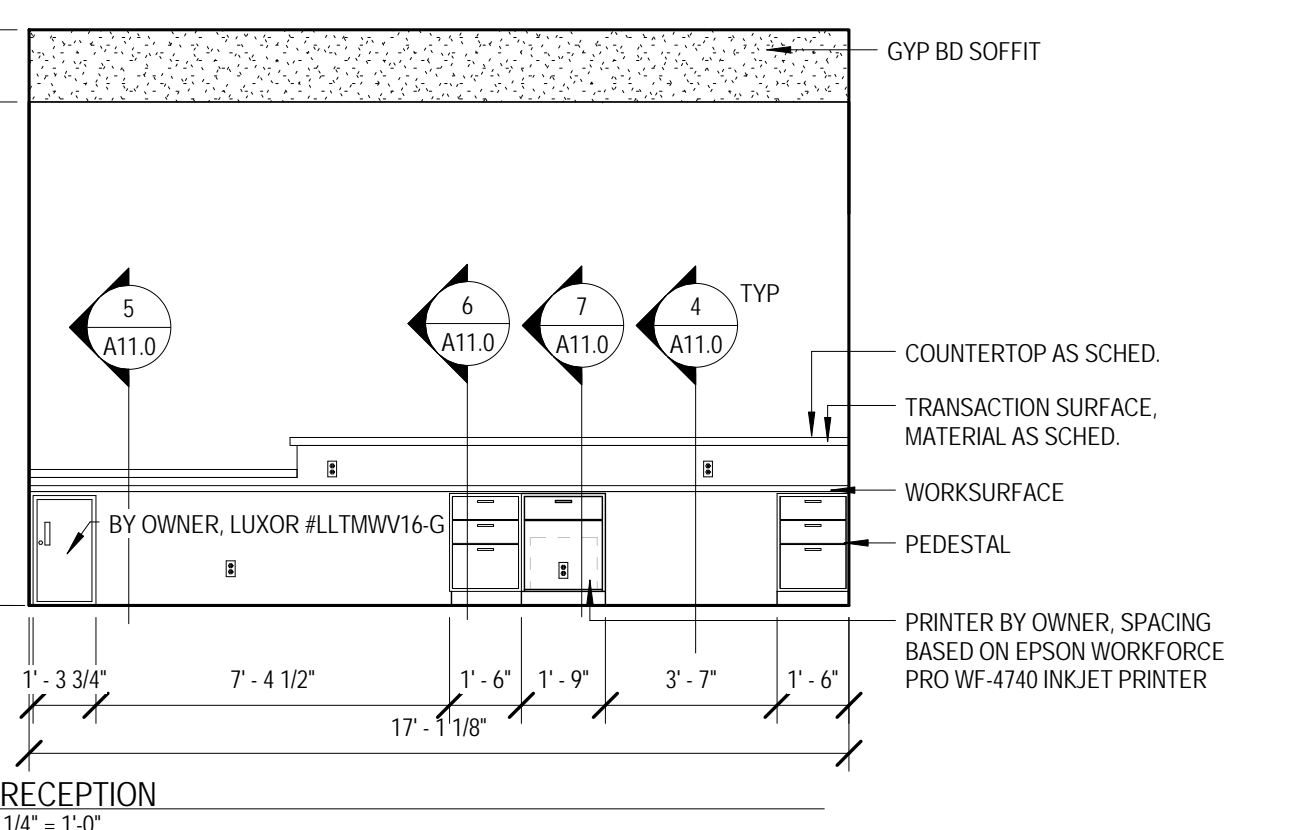
3 WAITING EAST
1/4" = 1'-0"



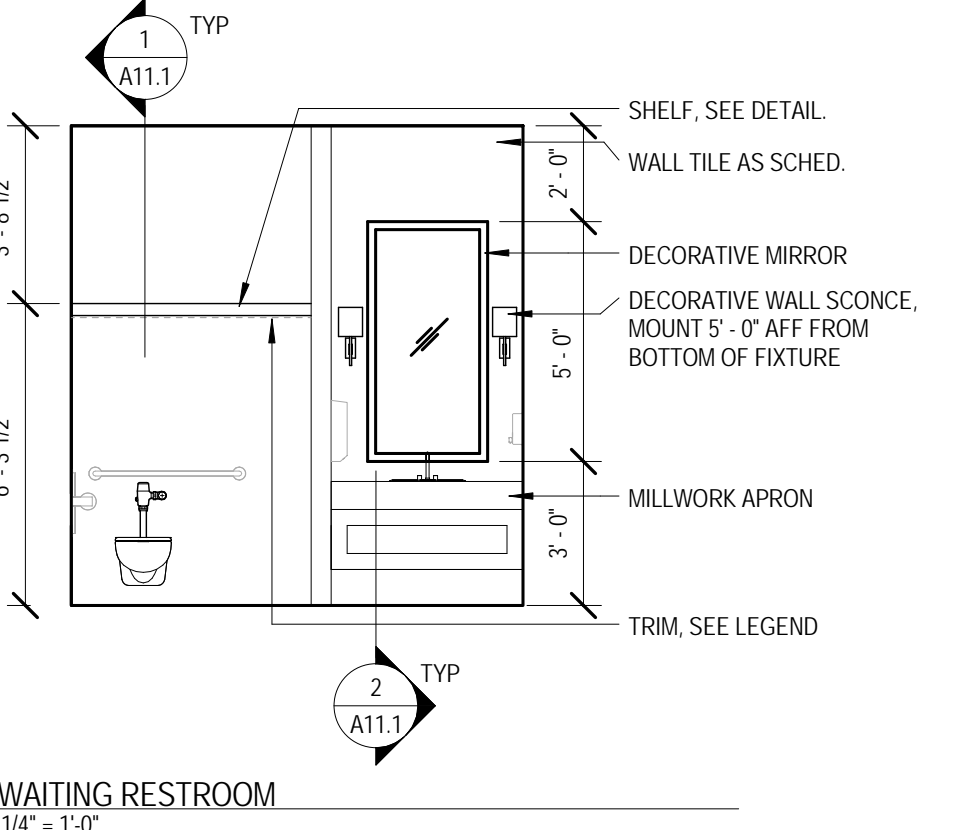
4 WAITING SOUTH
1/4" = 1'-0"



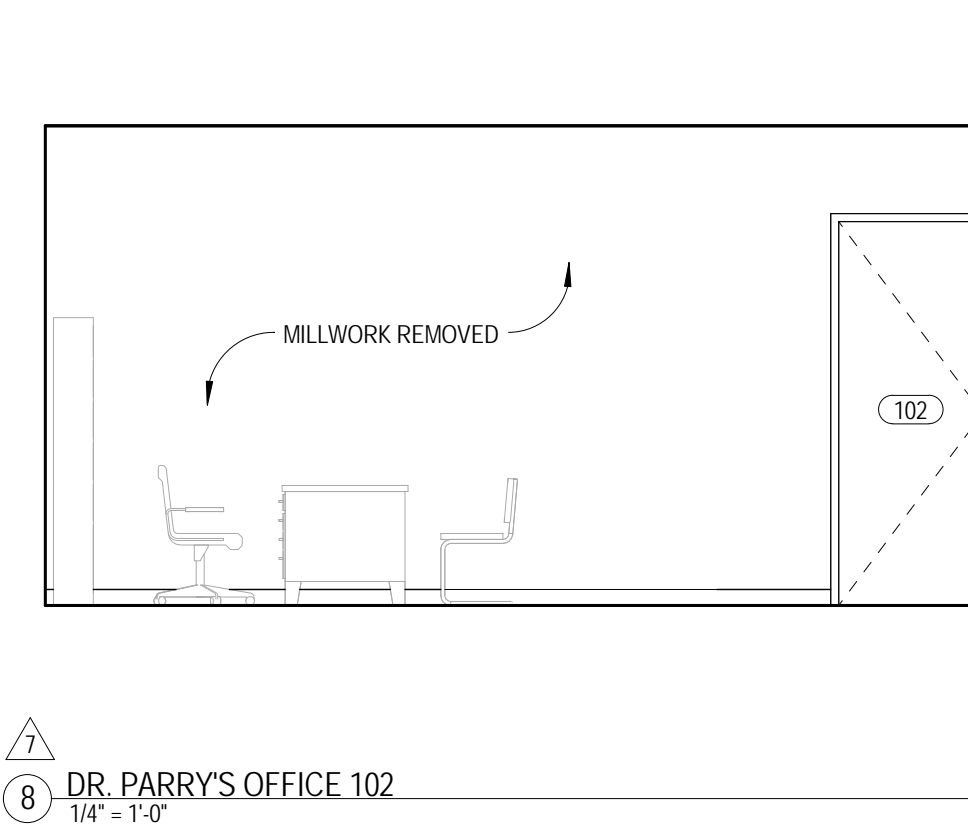
5 WAITING WEST
1/4" = 1'-0"



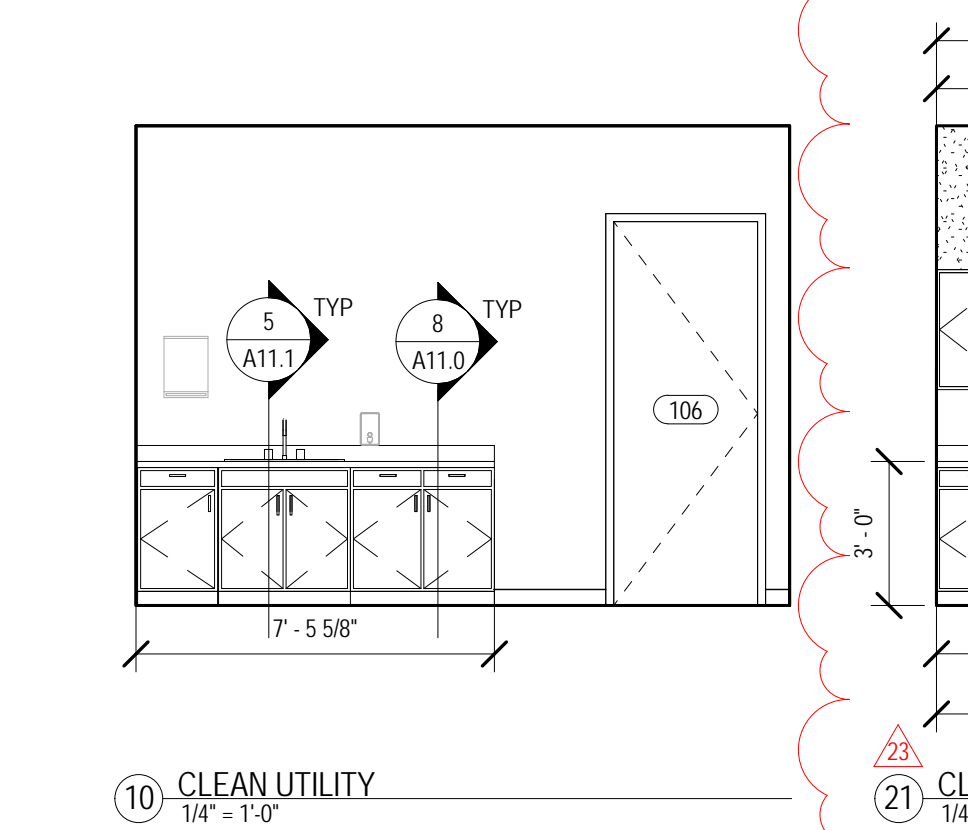
6 RECEPTION
1/4" = 1'-0"



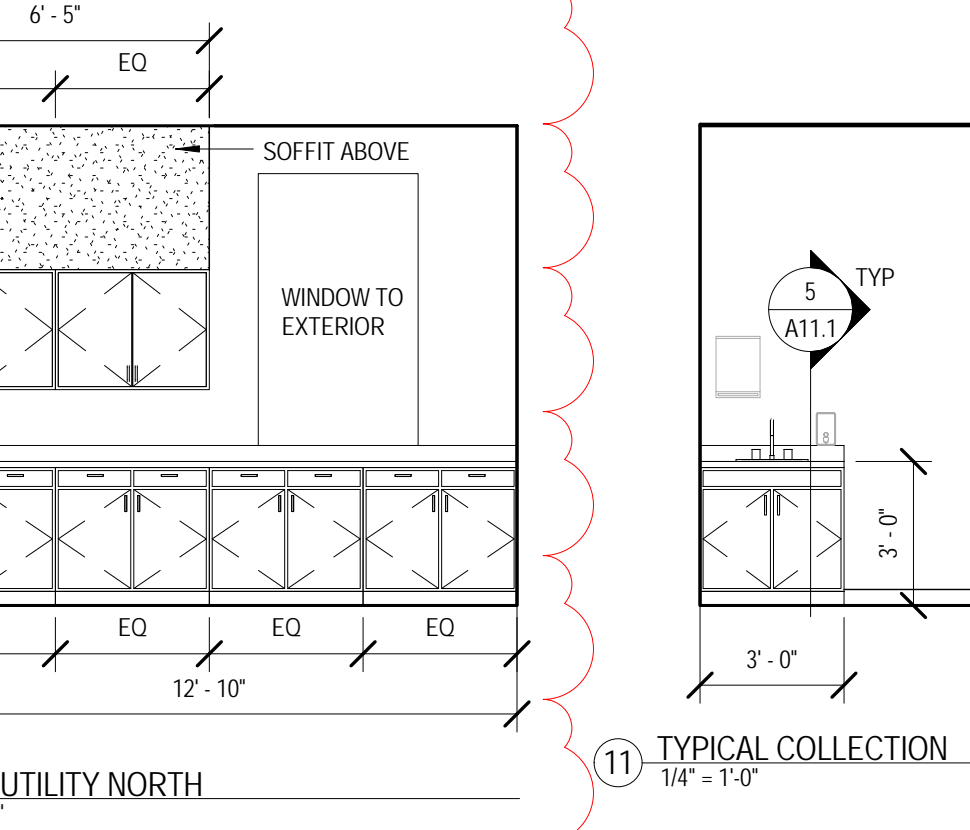
7 WAITING RESTROOM
1/4" = 1'-0"



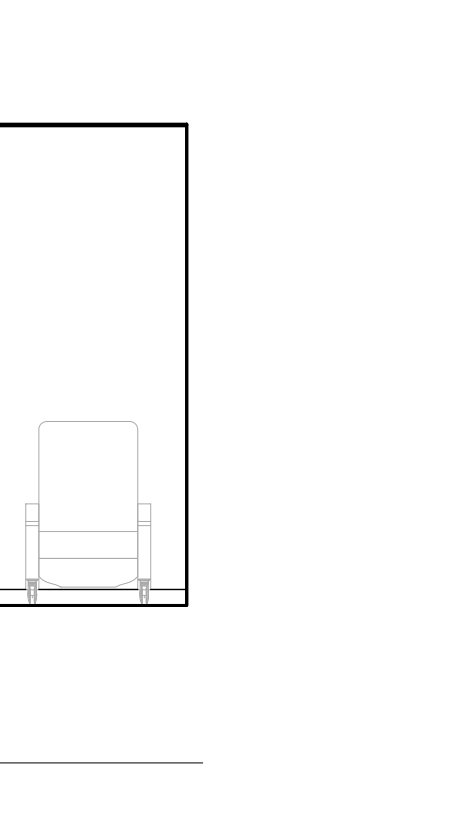
8 DR. PARRY'S OFFICE 102
1/4" = 1'-0"



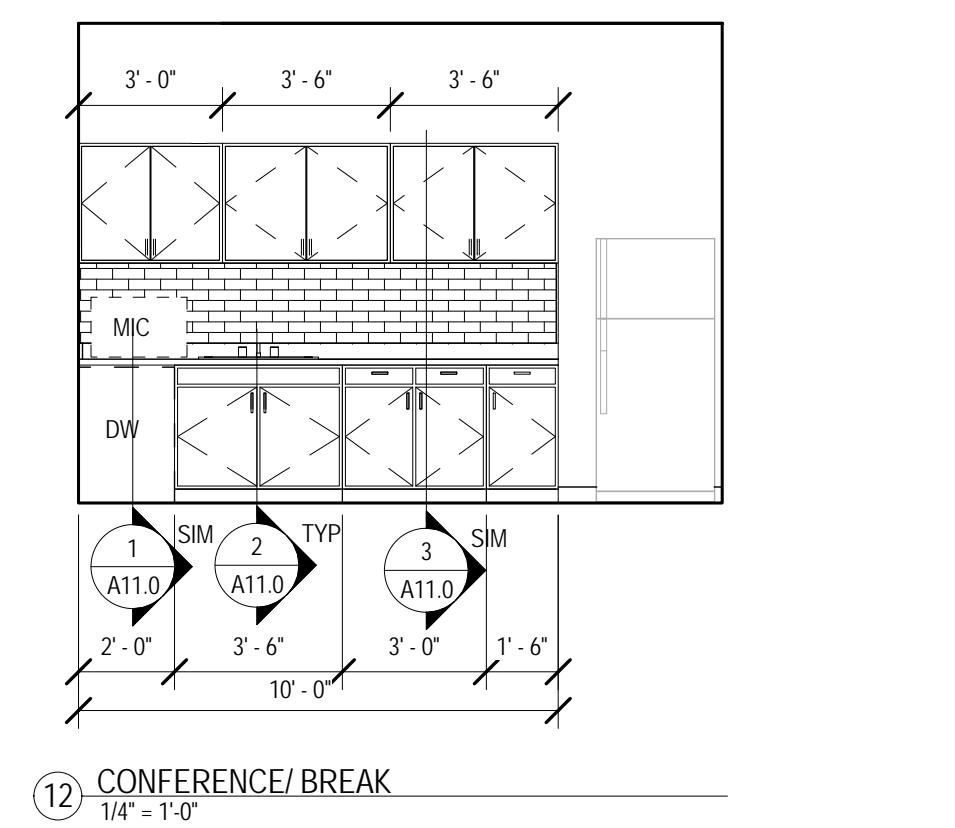
10 CLEAN UTILITY
1/4" = 1'-0"



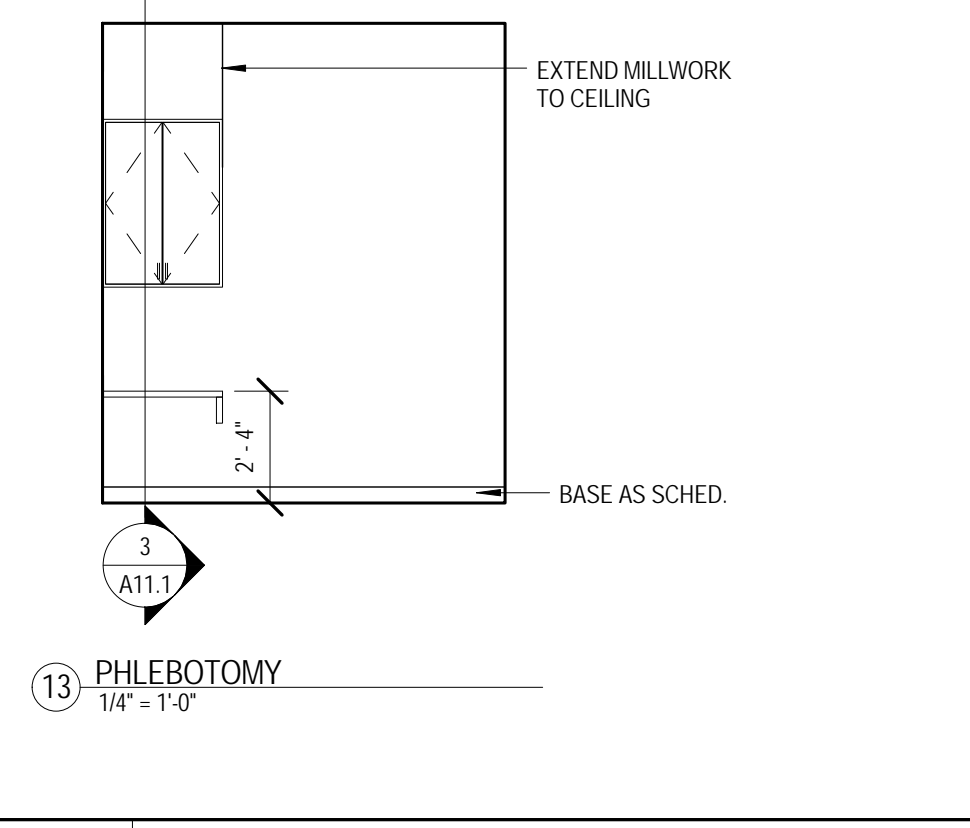
21 CLEAN UTILITY NORTH
1/4" = 1'-0"



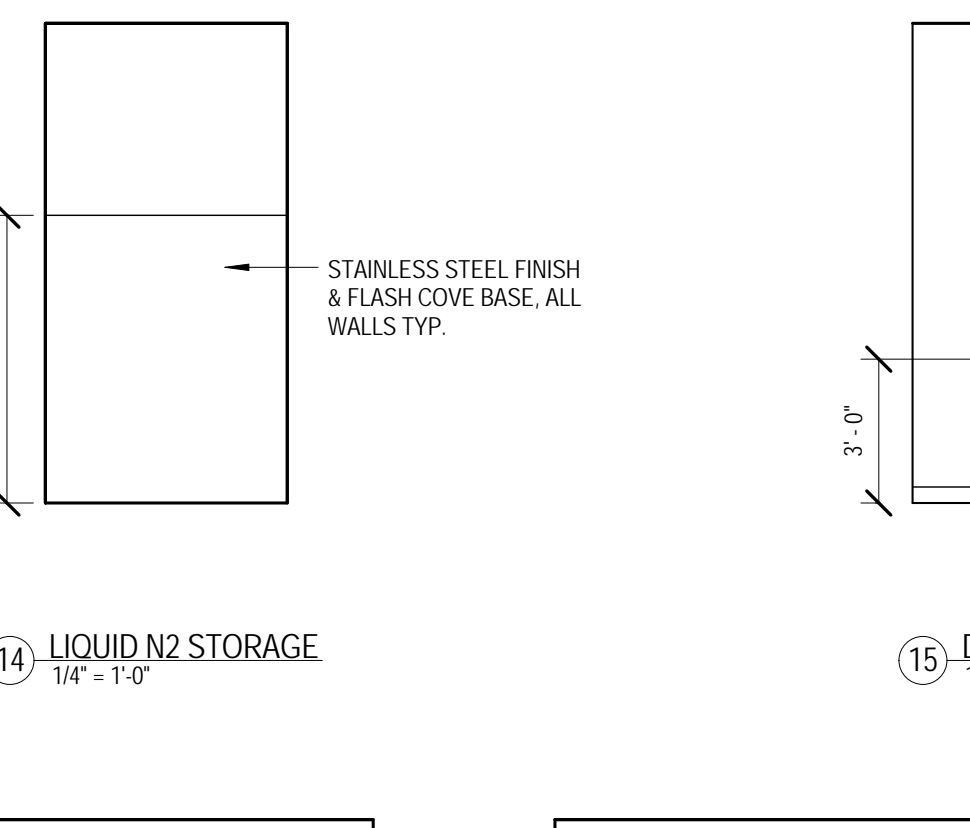
11 TYPICAL COLLECTION
1/4" = 1'-0"



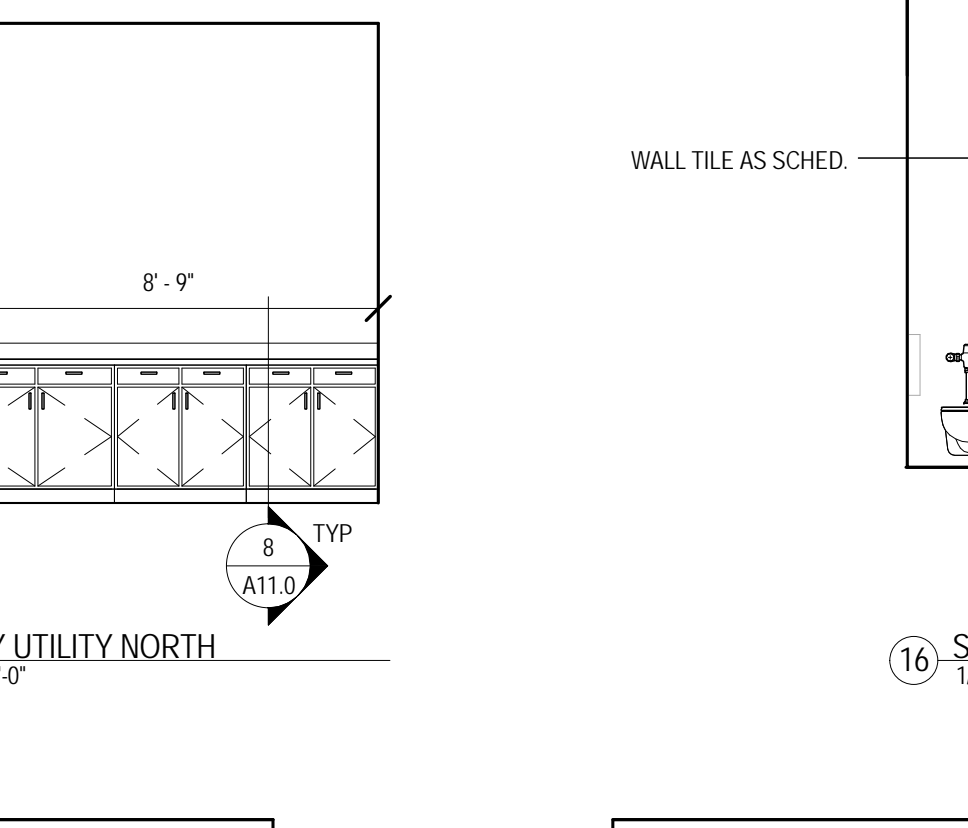
12 CONFERENCE/BREAK
1/4" = 1'-0"



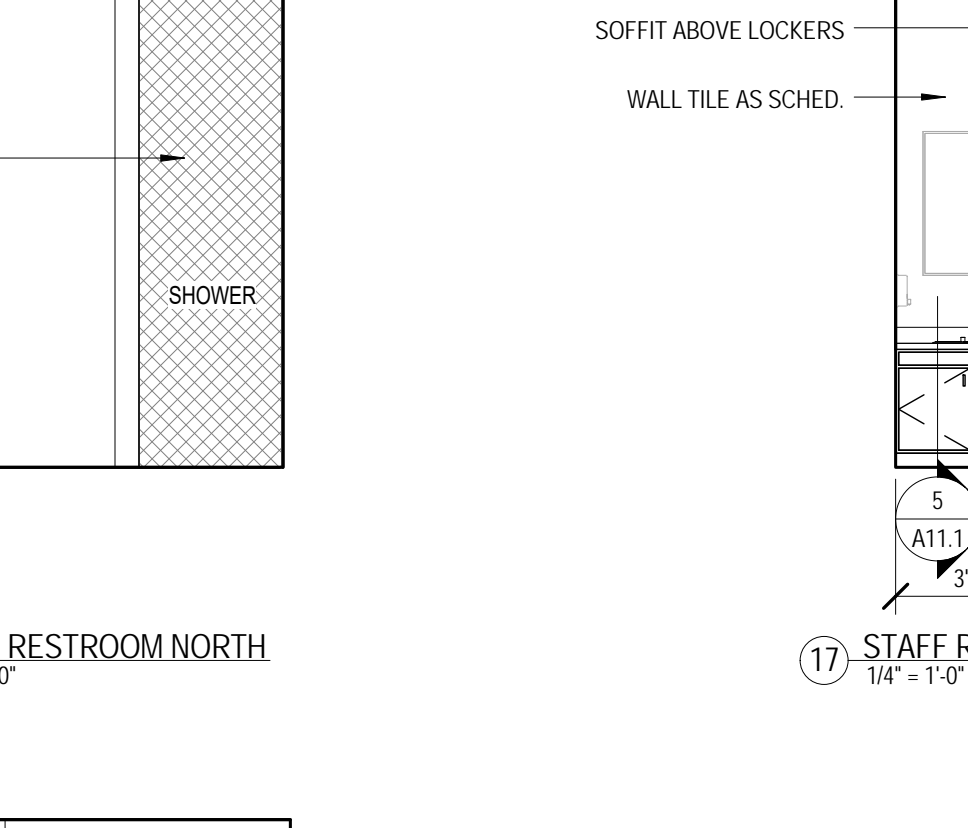
13 PHLEBOTOMY
1/4" = 1'-0"



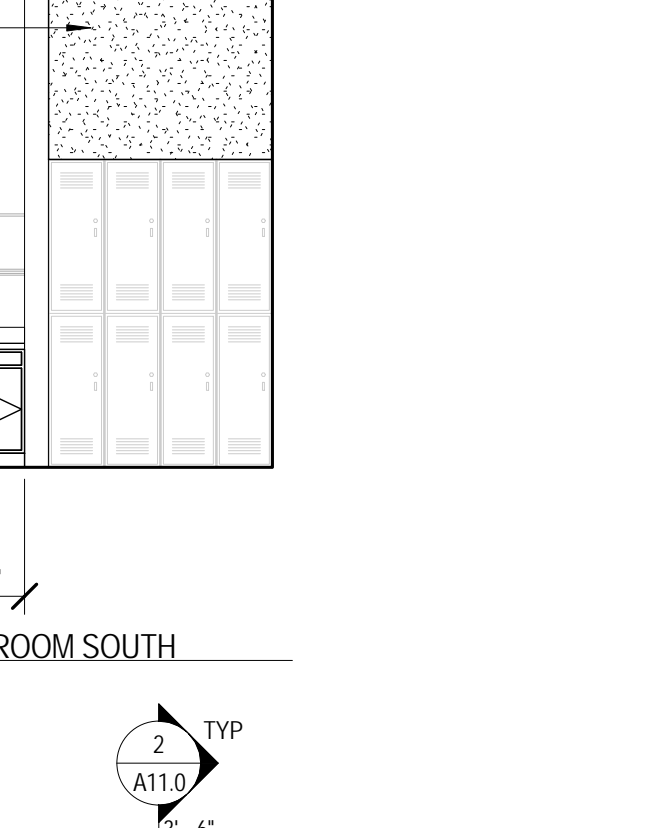
14 LIQUID N2 STORAGE
1/4" = 1'-0"



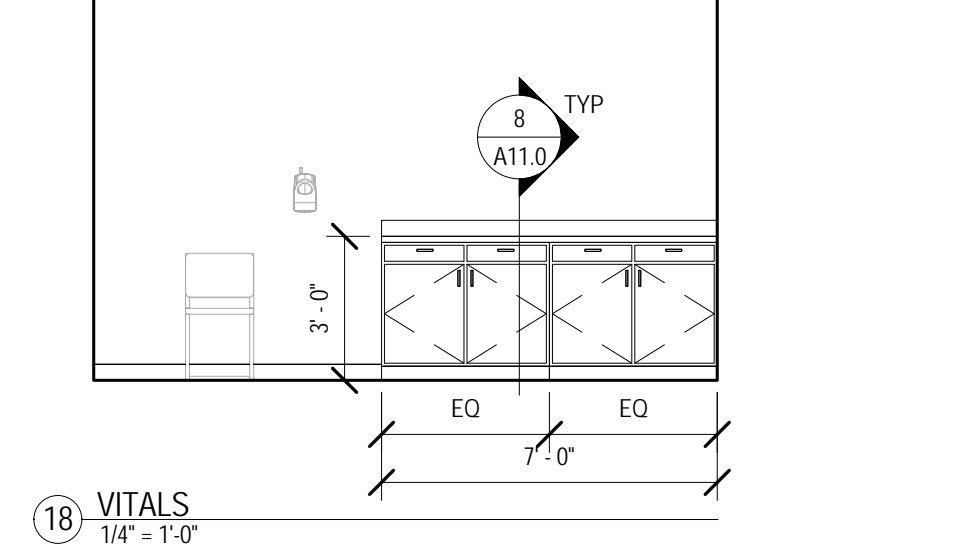
15 DIRTY UTILITY NORTH
1/4" = 1'-0"



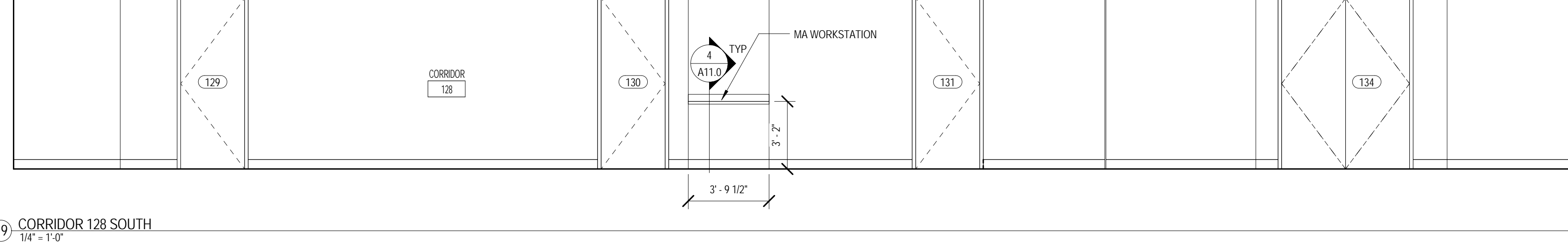
16 STAFF RESTROOM NORTH
1/4" = 1'-0"



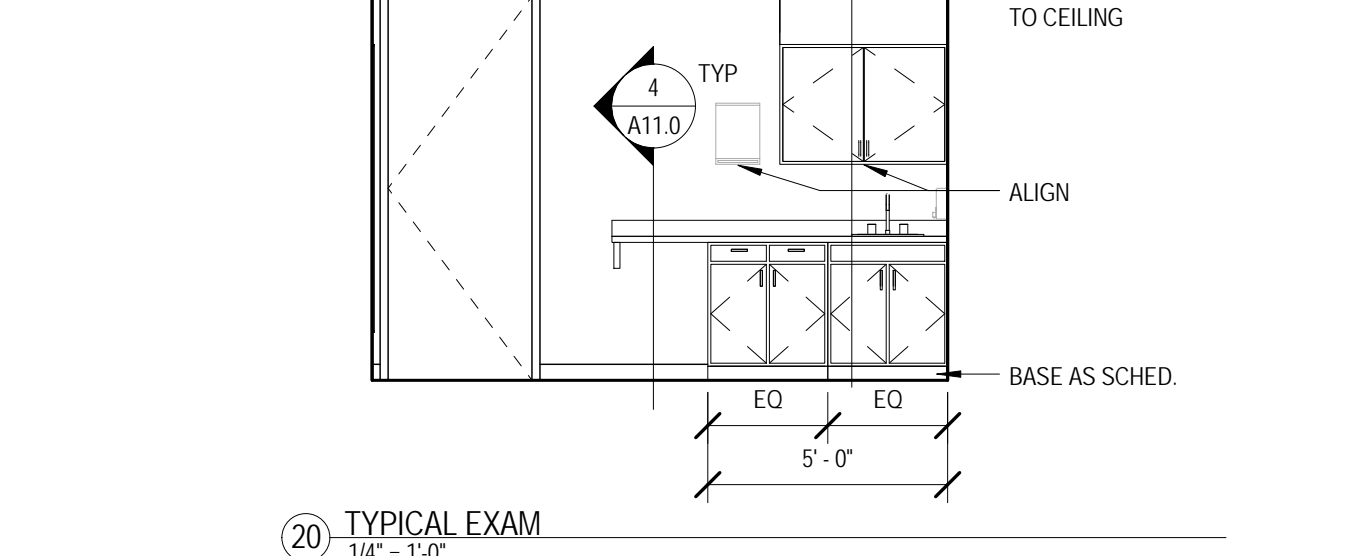
17 STAFF RESTROOM SOUTH
1/4" = 1'-0"



18 VITALS
1/4" = 1'-0"



19 CORRIDOR 128 SOUTH
1/4" = 1'-0"



20 TYPICAL EXAM
1/4" = 1'-0"



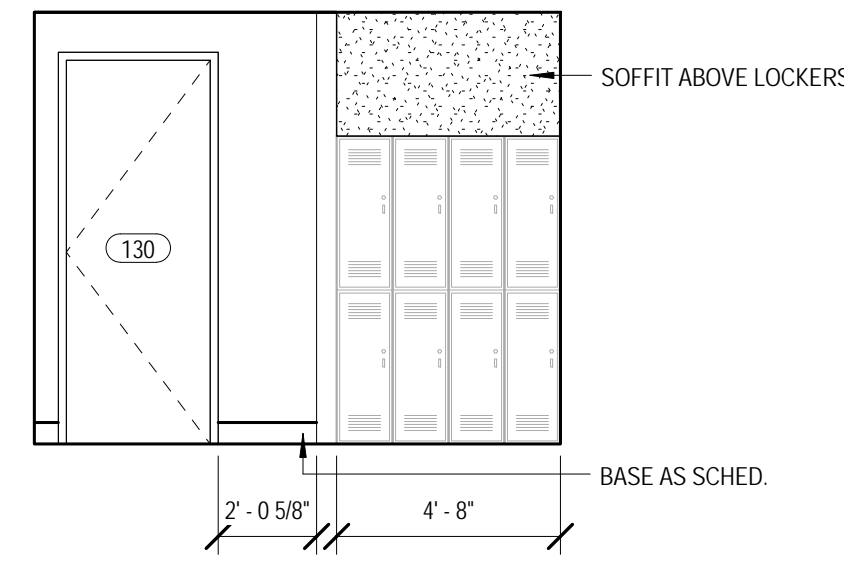
SEPTEMBER 29, 2017
CONSTRUCTION DOCUMENTS
WBA #: 2217

REVISIONS		
NO.	DESCRIPTION	DATE
7	BULLETIN 02	1.02.18
23	BULLETIN 05	04.03.18

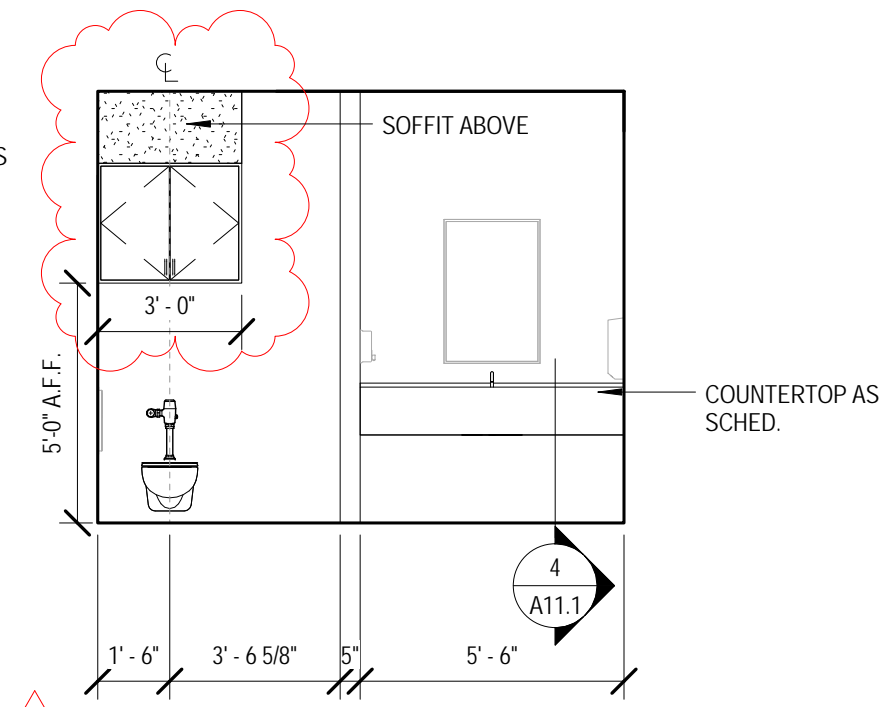
A9.0
INTERIOR ELEVATIONS

POSITIVE STEPS
FERTILITY, DR. J.
PRESTON PARRY

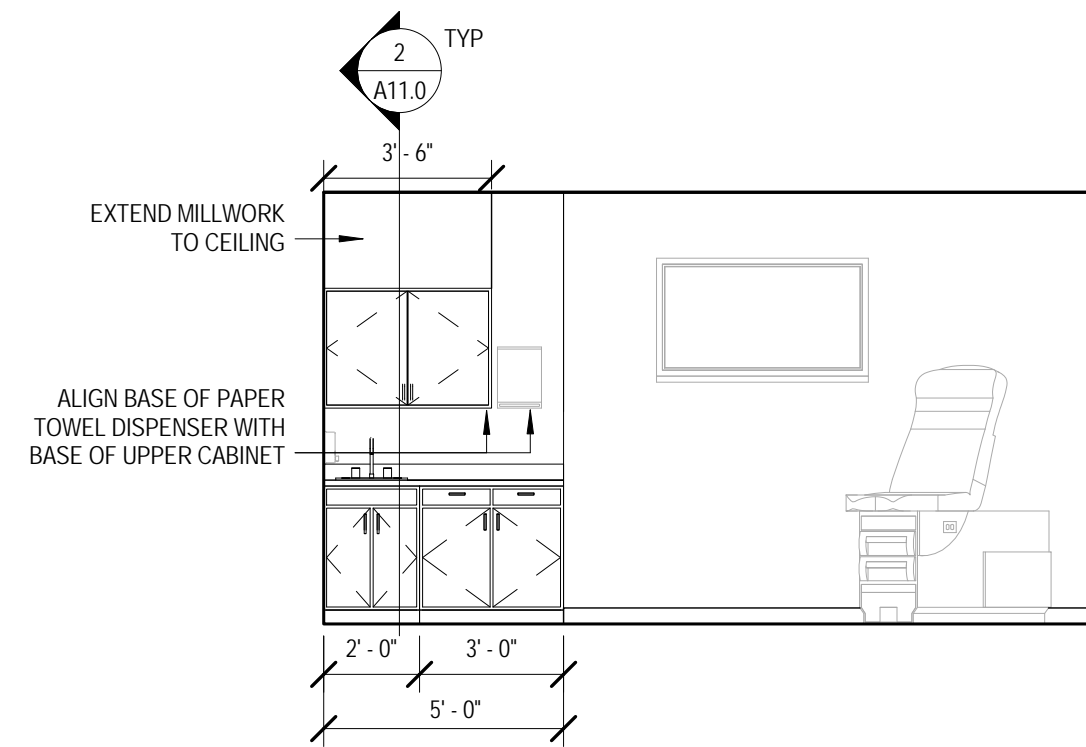
OWNER/DEVELOPER: DIANA
FOUNTAINS, LLC
OWNER CONSULTANT:
EVERETT CONSULTING GROUP,
LLC
GENERAL CONTRACTOR:
PROBITY CONTRACTING
GROUP, LLC



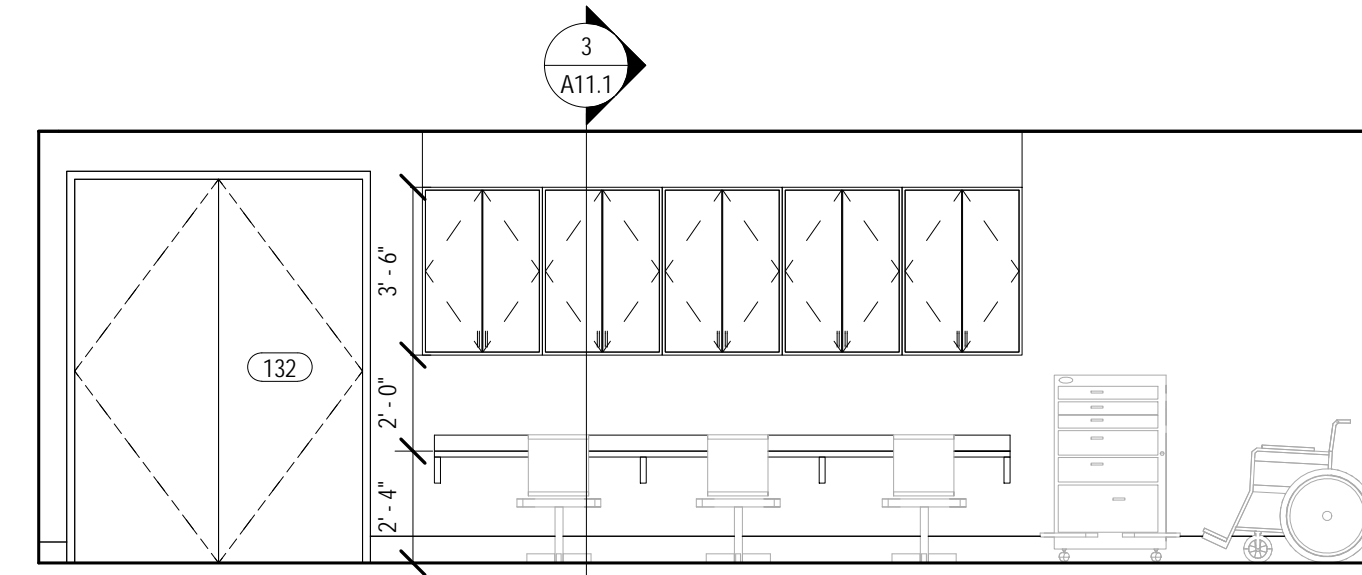
2 PATIENT RESTROOM 130 NORTH
1/4" = 1'-0"



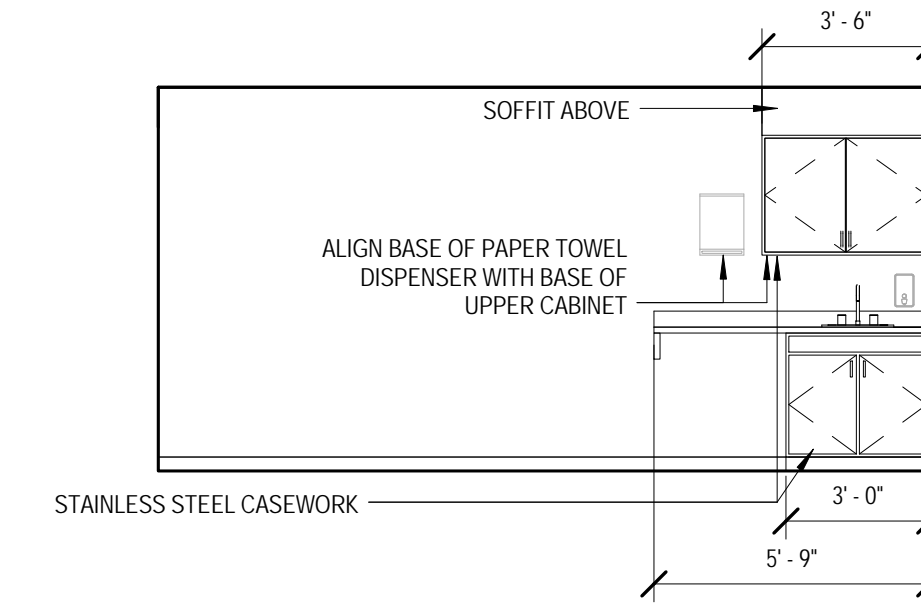
3 PATIENT RESTROOM 130 SOUTH
1/4" = 1'-0"



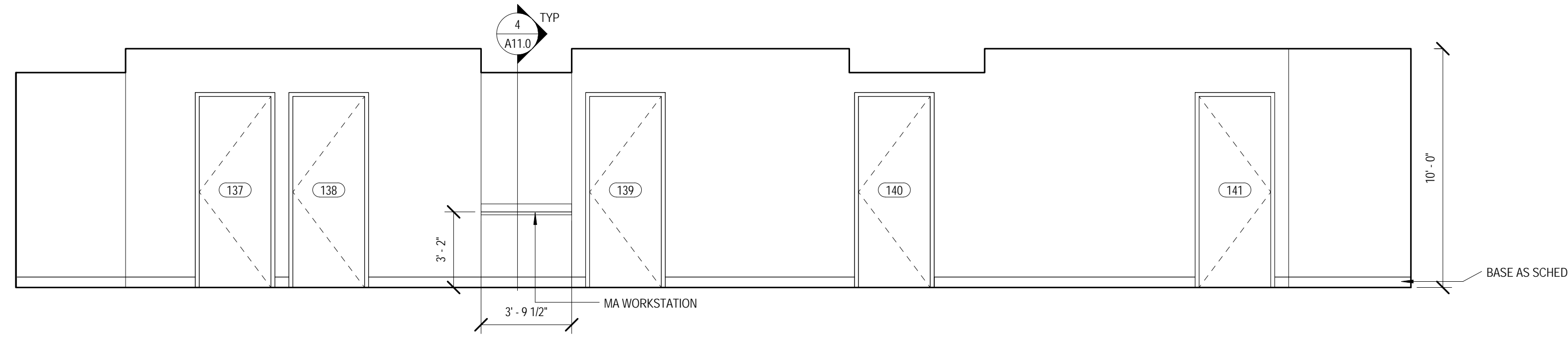
4 TYPICAL EXAM
1/4" = 1'-0"



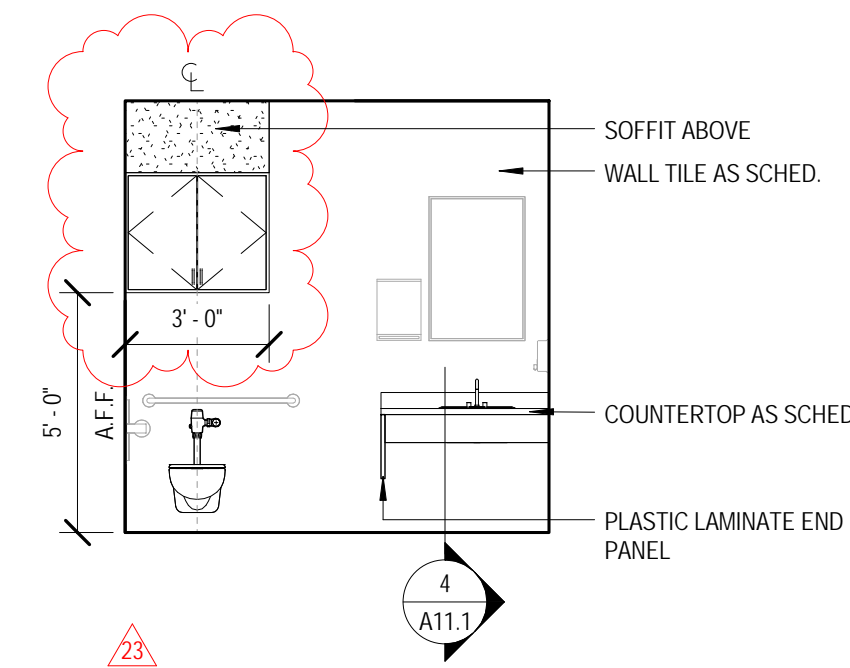
5 NURSING STATION
1/4" = 1'-0"



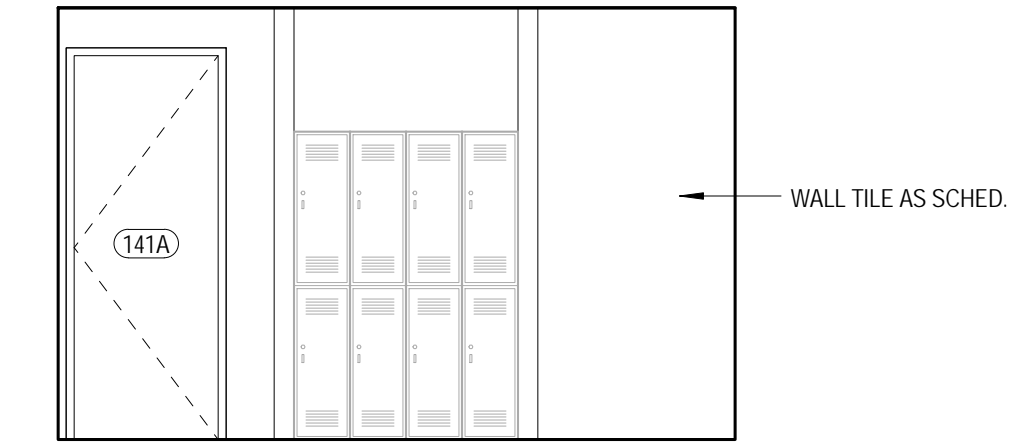
6 ADVANCED PROCEDURE SOUTH
1/4" = 1'-0"



1 CORRIDOR 137 NORTH
1/4" = 1'-0"



7 PATIENT RESTROOM 140 NORTH
1/4" = 1'-0"



8 PATIENT RESTROOM 140 EAST
1/4" = 1'-0"



SEPTEMBER 29, 2017

CONSTRUCTION DOCUMENTS

WBA #: 2217

REVISIONS

NO.	DESCRIPTION	DATE
23	BULLETIN 05	04.03.18