

Luminaire Schedule						
Symbol	Label	Qty	Arrangement	Manufacturer & Part Number	LLF	Lum. Lumens
⊕	C2 12.5W	17 17	Single	HELIOS - 6R10L40KWF	0.950	975
⊖	C2E	2	Single	HELIOS - 6R10L40KWFEM	0.950	975
⊕	F1 32W	2	Single	BROWNL EE - 7110-49-H32-40K	0.950	3757
⊕	WP 8W	13	Single	BROWNL EE - 7075-12-TW-H08-40K	0.950	858

Calculation Summary										
Label	CalcType	Units	PtSpclr	PtSpctb	Avg	Max	Min	Avg/Min	Max/Min	Description
Building Exterior	Illuminance	Fc	5	5	1.23	9.1	0.0	N.A.	N.A.	Readings taken at 0'-0" aff
Drive Canopy	Illuminance	Fc	5	5	15.72	26.9	5.2	3.02	5.17	Readings taken at 0'-0" afg
Side Canopy	Illuminance	Fc	5	5	9.25	9.9	8.6	1.08	1.15	Readings taken at 0'-0" aff

NOTES:

- 1) Fixture Mounting Heights (MH) are indicated next to each fixture.
- 2) All fixtures labeled with "_alt" indicates an alternative fixture different from what was listed in the fixture schedule received was used in this calculation
- 3) Interior reflectances 80/50/20; exterior reflectances 20% UON.
- 4) Quantity (QTY) indicated on HLPS Luminaire Schedule is for what is included in this calculation study only - Not final counts.
- 5) Contractor to verify exact fixture quantities and fixture run lengths before ordering.

Project Name: Kevin Darr, MD Office - Exterior

Client:

Date: 3/16/2026

Drawn By: C Thornton

Version:



THE ENGINEER AND/OR ARCHITECT MUST DETERMINE APPLICABILITY OF THE LAYOUT TO EXISTING / FUTURE FIELD CONDITIONS. THIS LIGHTING LAYOUT REPRESENTS ILLUMINATION LEVELS CALCULATED FROM LABORATORY DATA TAKEN UNDER CONTROLLED CONDITIONS IN ACCORDANCE WITH ILLUMINATING ENGINEERING SOCIETY APPROVED METHODS. ACTUAL PERFORMANCE OF ANY MANUFACTURER'S LUMINAIRE MAY VARY DUE TO VARIATION IN ELECTRICAL VOLTAGE, TOLERANCE IN LAMPS, AND OTHER VARIABLE FIELD CONDITIONS. THESE LIGHTING CALCULATIONS ARE NOT A SUBSTITUTE FOR INDEPENDENT ENGINEERING ANALYSIS OF LIGHTING SYSTEM SUITABILITY AND SAFETY. THE ENGINEER AND/OR ARCHITECT IS RESPONSIBLE TO REVIEW FOR COMPLIANCE OF ALL APPLICABLE ENERGY CODES AND LIGHTING QUALITY STANDARDS.

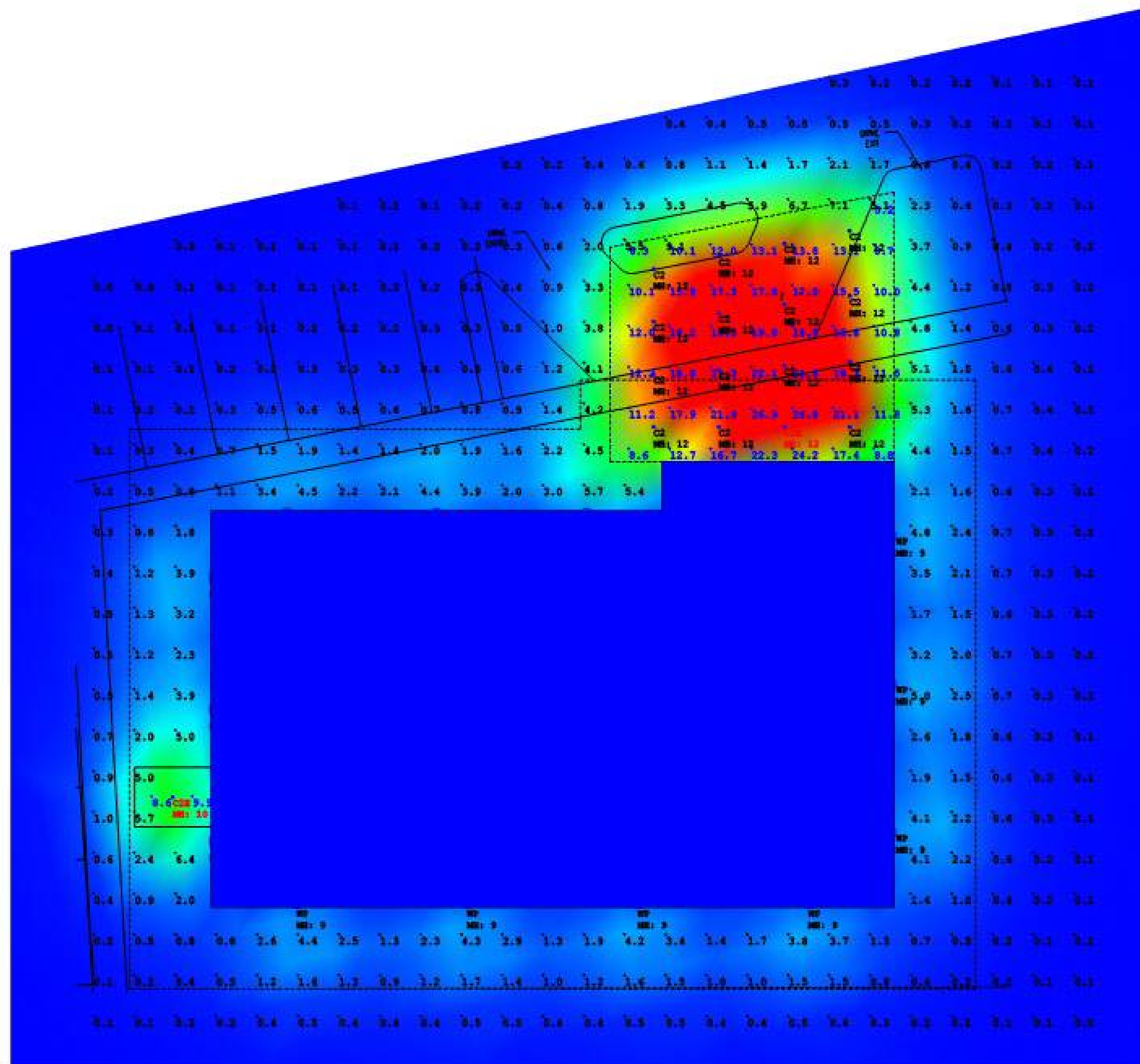
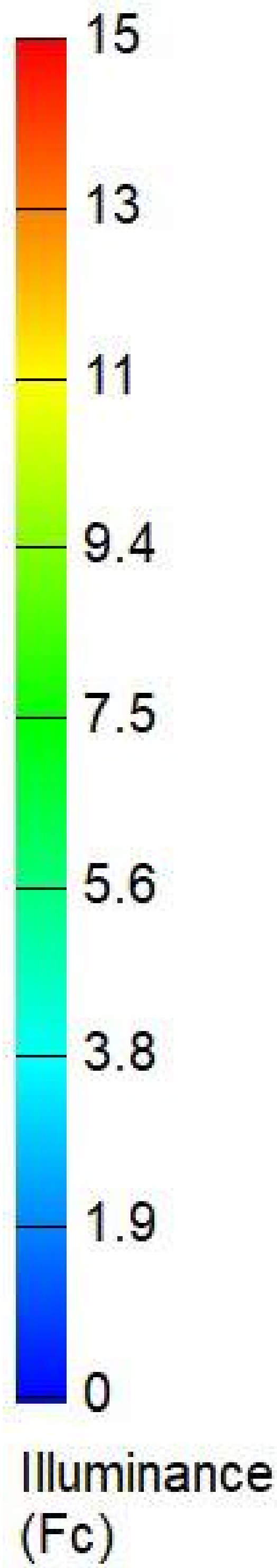


Project Name: Kevin Darr, MD Office - Exterior
 Client:
 Drawn By: C Thornton

Date: 3/16/2026
 Version:



THE ENGINEER AND/OR ARCHITECT MUST DETERMINE APPLICABILITY OF THE LAYOUT TO EXISTING / FUTURE FIELD CONDITIONS. THIS LIGHTING LAYOUT REPRESENTS ILLUMINATION LEVELS CALCULATED FROM LABORATORY DATA TAKEN UNDER CONTROLLED CONDITIONS IN ACCORDANCE WITH ILLUMINATING ENGINEERING SOCIETY APPROVED METHODS. ACTUAL PERFORMANCE OF ANY MANUFACTURER'S LUMINAIRE MAY VARY DUE TO VARIATION IN ELECTRICAL VOLTAGE, TOLERANCE IN LAMPS, AND OTHER VARIABLE FIELD CONDITIONS. THESE LIGHTING CALCULATIONS ARE NOT A SUBSTITUTE FOR INDEPENDENT ENGINEERING ANALYSIS OF LIGHTING SYSTEM SUITABILITY AND SAFETY. THE ENGINEER AND/OR ARCHITECT IS RESPONSIBLE TO REVIEW FOR COMPLIANCE OF ALL APPLICABLE ENERGY CODES AND LIGHTING QUALITY STANDARDS.



Project Name: Kevin Darr, MD Office - Exterior
 Client: Date: 3/16/2026
 Drawn By: C Thornton Version:



THE ENGINEER AND/OR ARCHITECT MUST DETERMINE APPLICABILITY OF THE LAYOUT TO EXISTING / FUTURE FIELD CONDITIONS. THIS LIGHTING LAYOUT REPRESENTS ILLUMINATION LEVELS CALCULATED FROM LABORATORY DATA TAKEN UNDER CONTROLLED CONDITIONS IN ACCORDANCE WITH ILLUMINATING ENGINEERING SOCIETY APPROVED METHODS. ACTUAL PERFORMANCE OF ANY MANUFACTURER'S LUMINAIRE MAY VARY DUE TO VARIATION IN ELECTRICAL VOLTAGE, TOLERANCE IN LAMPS, AND OTHER VARIABLE FIELD CONDITIONS. THESE LIGHTING CALCULATIONS ARE NOT A SUBSTITUTE FOR INDEPENDENT ENGINEERING ANALYSIS OF LIGHTING SYSTEM SUITABILITY AND SAFETY. THE ENGINEER AND/OR ARCHITECT IS RESPONSIBLE TO REVIEW FOR COMPLIANCE OF ALL APPLICABLE ENERGY CODES AND LIGHTING QUALITY STANDARDS.