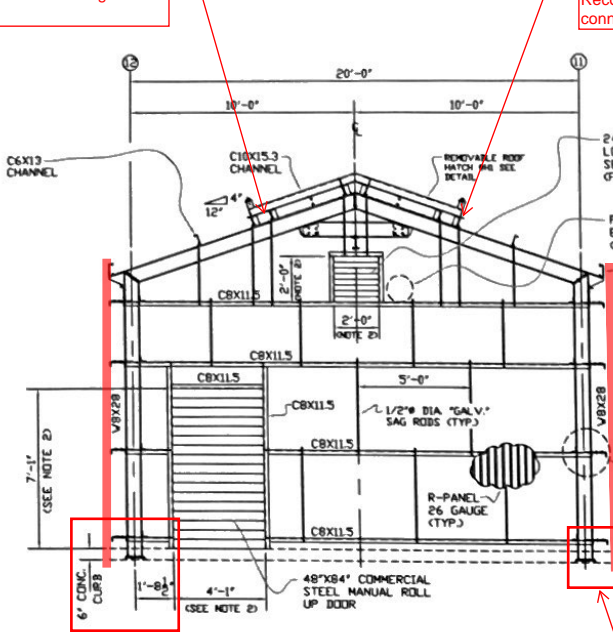


confirm details of roof hatches and flashing to ensure weather-tight roof system, typ.

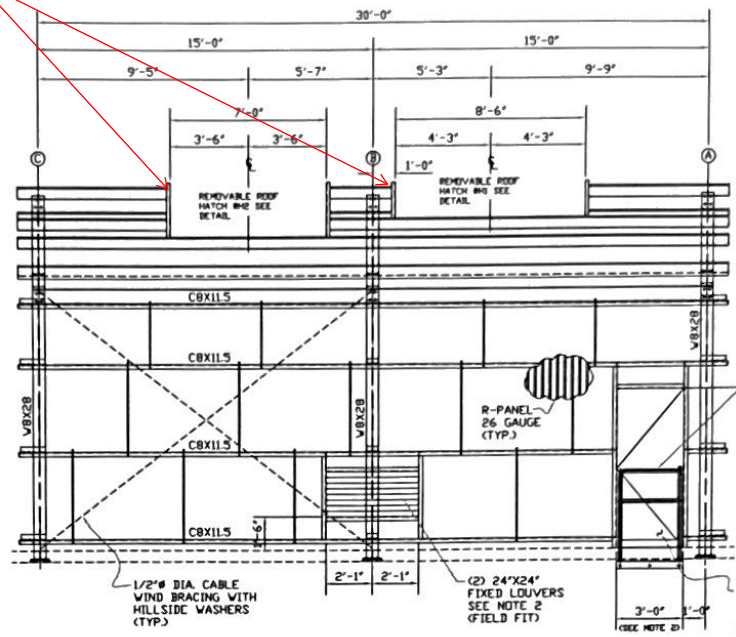
confirm attachment of removal roof hatches to primary structure. Recommend to provide bolted connections to resist wind net uplift, typ.

- NOTES:
- 1) ALL MATERIAL TO BE "HOT DIPPED GALVANIZED."
 - 2) VERIFY MANUFACTURER'S REQUIRED ROUGH OPENING.
 - 3) ALL ROOFING & WALLS WILL BE R-PANEL 26 GAUGE WITH TRIM COMPONENTS.
 - 4) NO GUTTERS REQUIRED.
 - 5) SEE DRAWING WPF-3555-2 FOR PLAN VIEW.
 - 6) SEE DRAWING WPF-3555-3 FOR REMOVABLE HATCH (H1) DETAIL.
 - 7) SEE DRAWING WPF-3555-4 FOR REMOVABLE HATCH (H2) DETAIL.
 - 8) DOORS & LOUVERS WILL BE PURCHASED SEPARATE, INCLUDED WITH HARDWARE.
 - 9) FIELD FIT ALL (C) DOORS.
 - 10) FIELD FIT PENETRATIONS & CLOSURE WITH METAL.
 - 11) SEE HANDRAIL DETAIL FOR DOOR OPENING @ 32" C POSTS



LOOKING SOUTH
FIREWATER PUMP BUILDING NORTH ELEVATION
SCALE: 3/8"=1'-0"

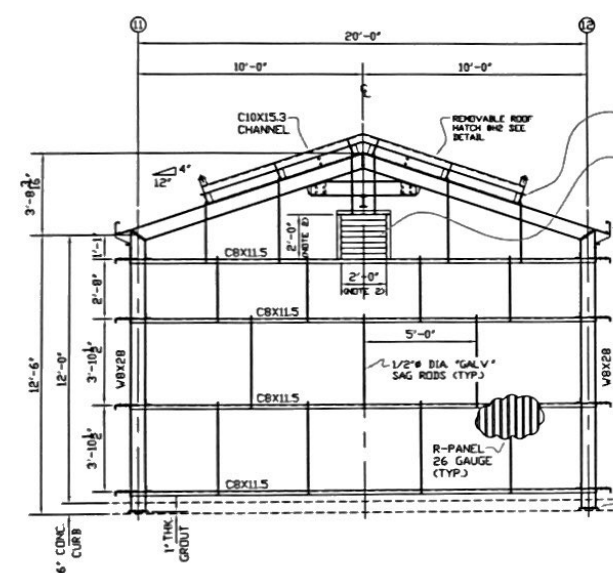
extend metal panel wall minimum of 3" below top of concrete curb, around all sides of building, typ.



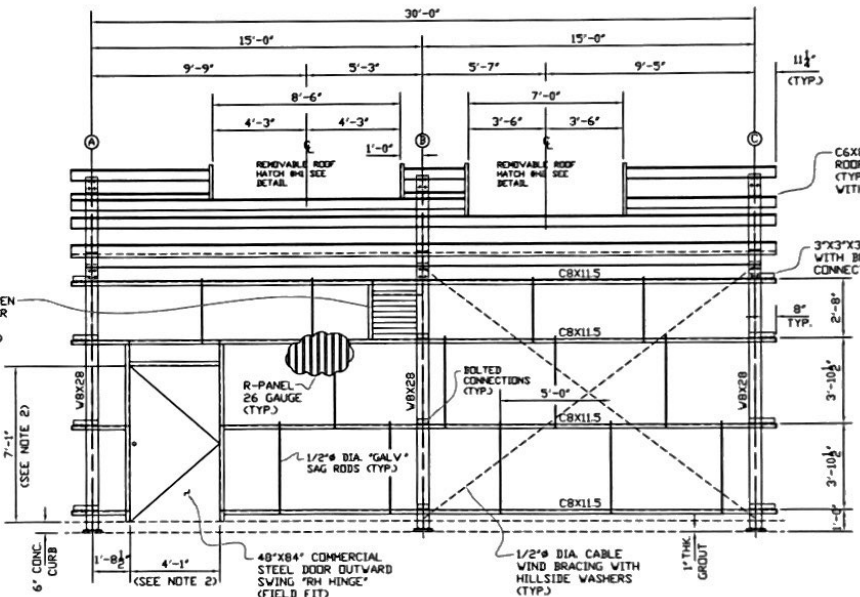
LOOKING WEST
FIREWATER PUMP BUILDING EAST ELEVATION
SCALE: 3/8"=1'-0"

DESIGN LOADS PER ASCE 7, LATEST EDITION AS NOTED BELOW:
 ■ ROOF LIVE LOAD 20 PSF (MINIMUM)
 ■ WIND SPEED, V=150 MPH
 ■ RISK CATEGORY III
 ■ EXPOSURE C

Project Engineering Work Order (EWO) and ASCE 7-16 for the site has V=158mph, please confirm

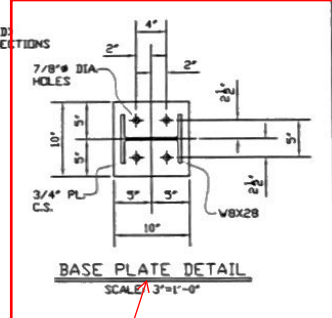


LOOKING NORTH
FIREWATER PUMP BUILDING SOUTH ELEVATION
SCALE: 3/8"=1'-0"



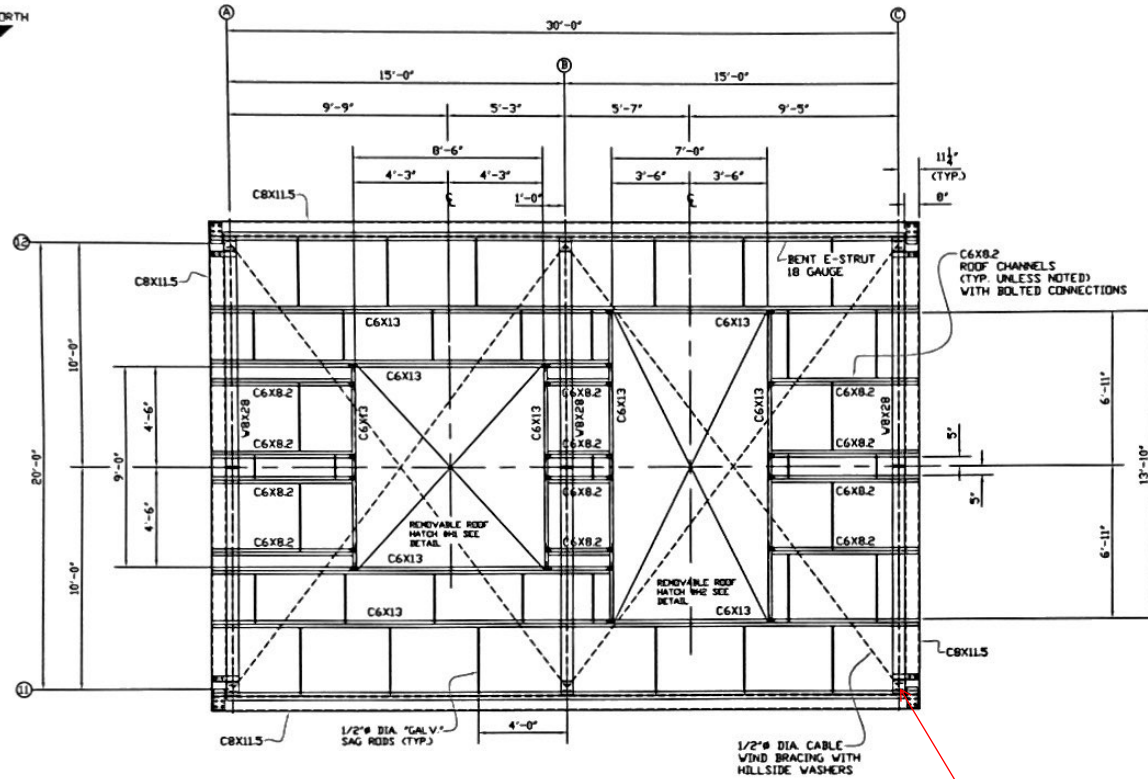
LOOKING EAST
FIREWATER PUMP BUILDING WEST ELEVATION
SCALE: 3/8"=1'-0"

Per Project Engineering Work Order (EWO), Contractor shall submit design calculations for building that are stamped by a licensed professional engineer registered in the State of Louisiana



Per General Note 5.0 on MD-25013-002, please submit stamped calculations including column reactions to the Owner and Engineer so that final Base Plate and Anchorage Details can be confirmed.

PICOU-FRADELLA CONSTRUCTION, CO.
 CHALMETTE, LA
 SCALE: NOTED APPROVED BY: _____ DRAWN BY: P.M.B.
 DATE: 7/29/23 JOB: PF-3555 SHEET 1 OF 4
FIREWATER PUMP BUILDING
 CHEVRON TRUCK PF-3555-1



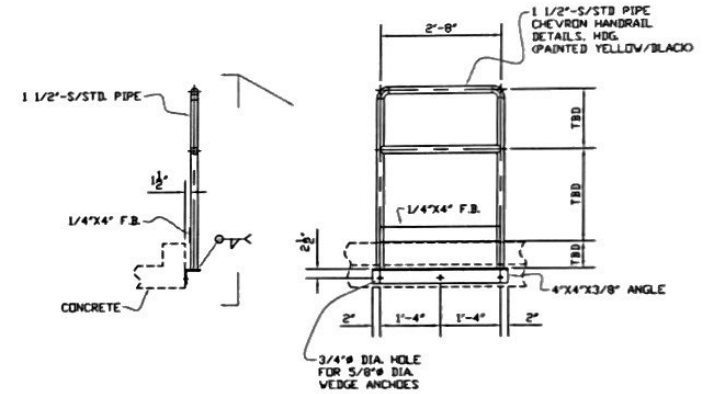
FIREWATER PUMP BUILDING ROOF PLAN
SCALE: 3/8"=1'-0"

NOTES:

1. ALL MATERIAL TO BE "HOT DIPPED GALVANIZED"
2. VERIFY MANUFACTURER'S REQUIRED ROUGH OPENING.
3. ALL ROOFING & WALLS WILL BE R-PANEL 26 GAUGE WITH TRIM COMPONENTS.
4. NO GUTTERS REQUIRED.
5. SEE DRAWING #PF-3555-1 FOR ELEVATION DETAILS.
6. SEE DRAWING #PF-3555-3 FOR REMOVABLE HATCH (H1) DETAIL.
7. SEE DRAWING #PF-3555-4 FOR REMOVABLE HATCH (H2) DETAIL.
8. DOORS & LOUVERS WILL BE PURCHASED SEPARATE, INCLUDED WITH HARDWARE.
9. FIELD FIT ALL (C) DOORS.
10. FIELD FIT PENETRATIONS & CLOSURE WITH METAL.
11. SEE HANDRAIL DETAIL FOR DOOR OPENING @ 32" C POSTS

DESIGN LOADS PER ASCE 7, LATEST EDITION AS NOTED BELOW

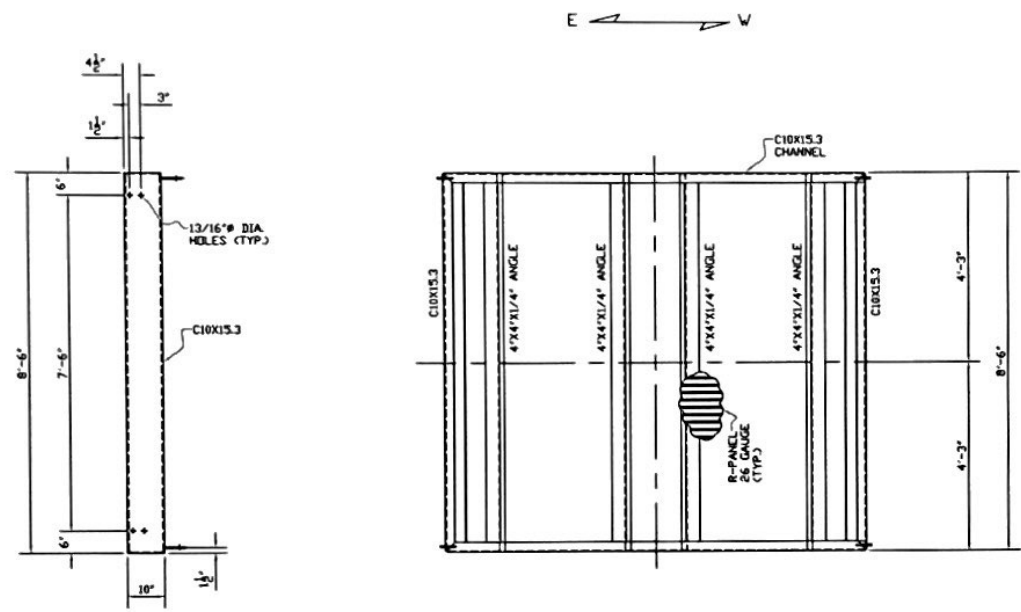
- ROOF LIVE LOAD 20 PSF (MINIMUM)
- WIND SPEED, V=150 MPH
- RISK CATEGORY III
- EXPOSURE C



Confirm that wind bracing can be removed temporarily if needed to pull roof hatches and equipment through roof openings, typ.

PICOU-FRADELLA CONSTRUCTION, CO.		
<small>CHALMETTE, LA.</small>		
<small>SCALE (NOTED)</small>	<small>APPROVED BY</small>	<small>DRAWN BY P.M.B.</small>
<small>DATE 7/29/23</small>	<small>JOB # PF-3555</small>	<small>SHEET 2 OF 4</small>
FIREWATER PUMP BUILDING		
CHEVRON		<small>PF-3555-2</small>

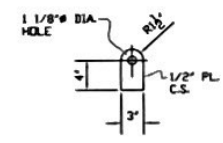
- NOTES:
1. ALL MATERIAL TO BE "HOT DIPPED GALVANIZED"
 2. VERIFY MANUFACTURER'S REQUIRED ROUGH OPENING
 3. ALL ROOFING & WALLS WILL BE R-RANEL 26 GAUGE WITH TRIM COMPONENTS.
 4. NO GUTTERS REQUIRED.
 5. SEE DRAWING WFF-3555-1 FOR ELEVATION DETAILS.
 6. SEE DRAWING WFF-3555-4 FOR REMOVABLE HATCH (H2) DETAIL.
 7. DOORS & LOUVERS WILL BE PURCHASED SEPARATE, INCLUDED WITH HARDWARE.
 8. FIELD FIT ALL (3) DOORS.
 9. FIELD FIT PENETRATIONS & CLOSURE WITH METAL.



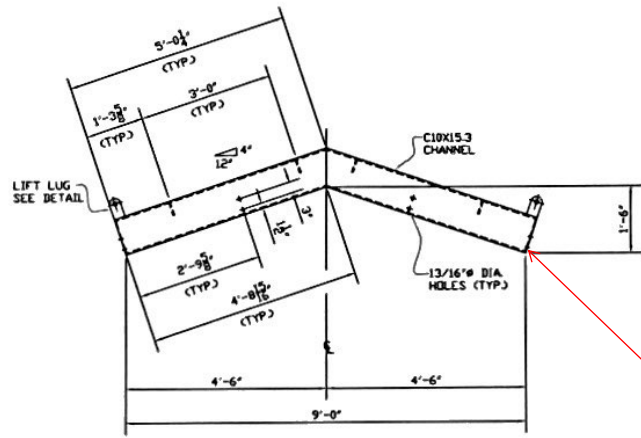
PLAN VIEW
SCALE: 3/4"=1'-0"

DESIGN LOADS PER ASCE 7, LATEST EDITION AS NOTED BELOW.

- ROOF LIVE LOAD 20 PSF (MINIMUM)
- WIND SPEED, V=150 MPH
- RISK CATEGORY III
- EXPOSURE C



LIFT LUG DETAIL
SCALE: 1 1/2"=1'-0"

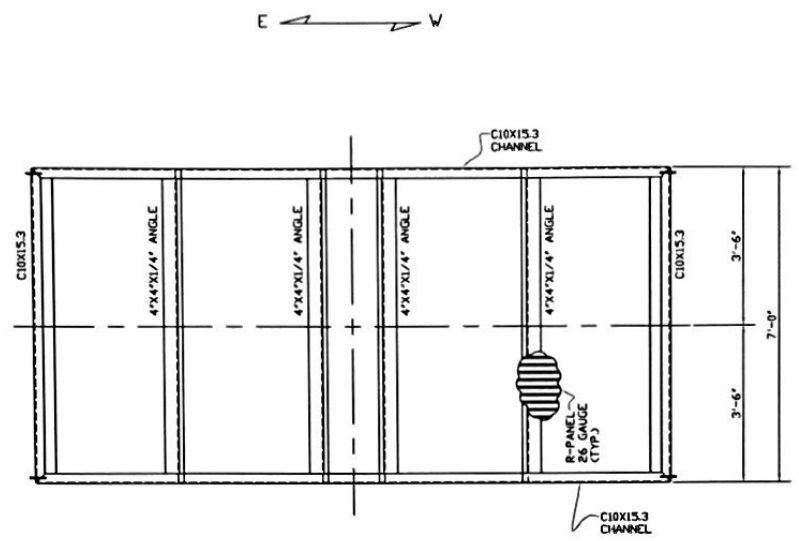
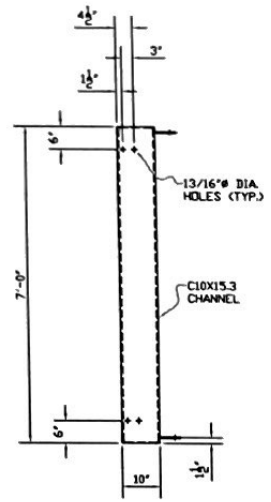


REMOVABLE HATCH #H1 DETAIL
SCALE: 3/4"=1'-0"
(1 REQ'D)

confirm attachment of removal roof hatches to primary structure. Recommend to provide bolted connections to resist wind net uplift, typ.

PICOU-FRADELLA CONSTRUCTION, CO. CHALMETTE, LA.		
SCALE/NOTED	APPROVED BY	DRAWN BY/P.M.B.
DATE: 7/29/25	JOB# PF-3555	SHEET 3 OF 4
FIREWATER PUMP BUILDING		
CHEVRON	PAGE	PF-3555-3

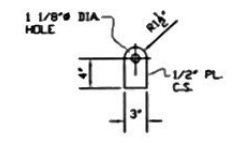
- NOTES:
1. ALL MATERIAL TO BE "HOT DIPPED GALVANIZED."
 2. VERIFY MANUFACTURER'S REQUIRED ROUGH OPENING.
 3. ALL ROOFING & WALLS WILL BE R-RANEL 26 GAUGE WITH TRIM COMPONENTS.
 4. NO GUTTERS REQUIRED.
 5. SEE DRAWING WPF-3555-1 FOR ELEVATION DETAILS.
 6. SEE DRAWING WPF-3555-3 FOR REMOVABLE HATCH (H) DETAIL.
 7. DOORS & LOUVERS WILL BE PURCHASED SEPARATE, INCLUDED WITH HARDWARE.
 8. FIELD FIT ALL (C) DOORS.
 9. FIELD FIT PENETRATIONS & CLOSURE WITH METAL.



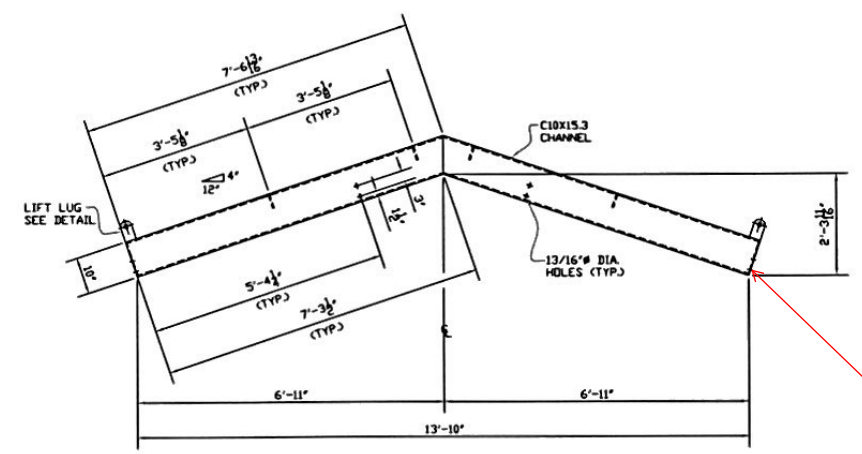
PLAN VIEW
SCALE: 3/4"=1'-0"

DESIGN LOADS PER ASCE 7, LATEST EDITION AS NOTED BELOW.

- ROOF LIVE LOAD 20 PSF (MINIMUM)
- WIND SPEED, V=150 MPH
- RISK CATEGORY III
- EXPOSURE C



LIFT LUG DETAIL
SCALE: 1 1/2"=1'-0"



REMOVABLE HATCH #2 DETAIL
SCALE: 3/4"=1'-0"
(1 REQ'D)

confirm attachment of removal roof hatches to primary structure. Recommend to provide bolted connections to resist wind net uplift, typ.

PICOU-FRADELLA CONSTRUCTION, CO. CHALMETTE, LA.		
SCALE (NOTED)	APPROVED BY	DRAWN BY P.M.B.
DATE: 7/29/20	JOB# PF-3555	SHEET 4 OF 4
FIREWATER PUMP BUILDING		
CHEVRON		WEEK PF-3555-4