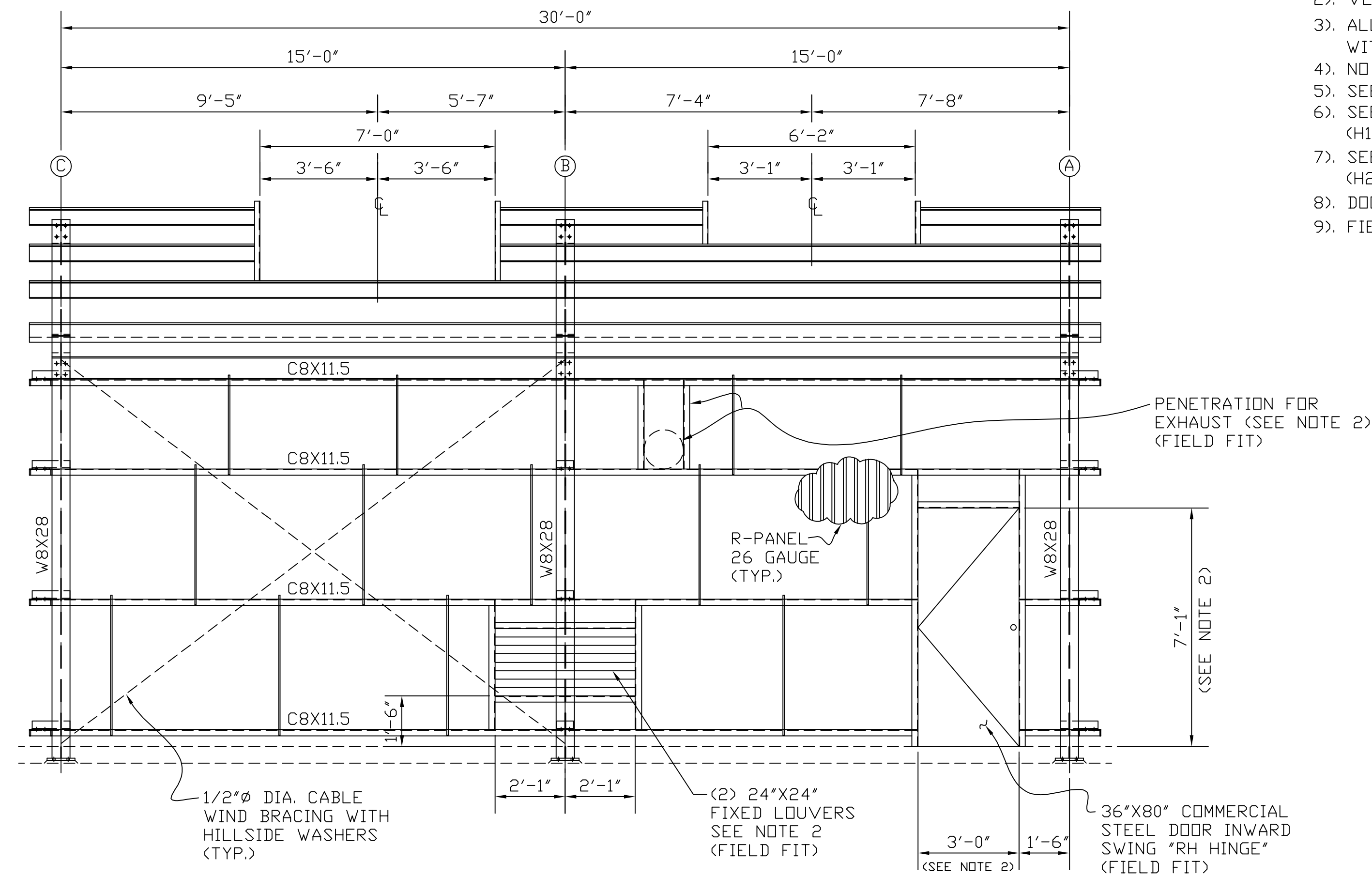
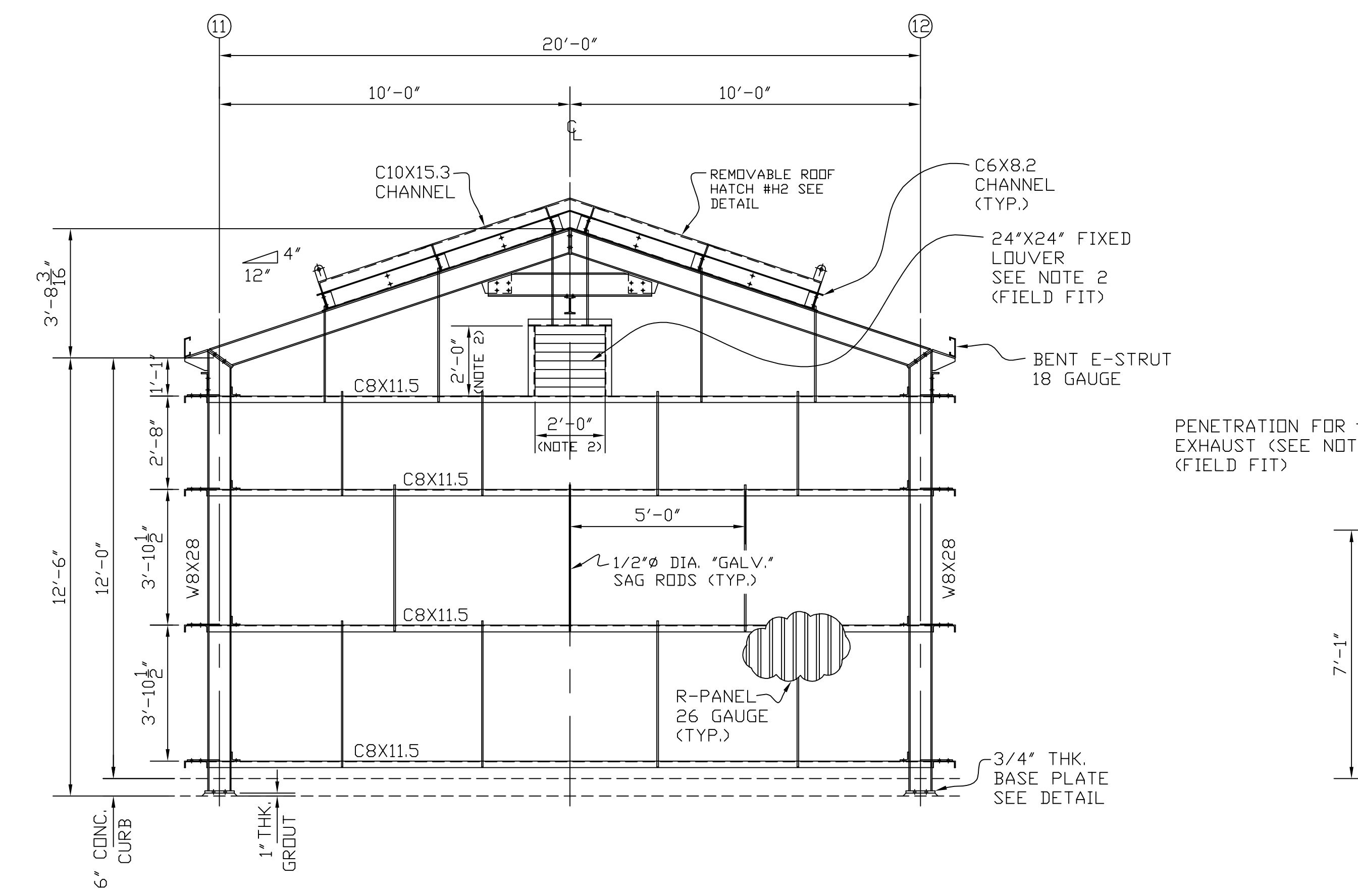


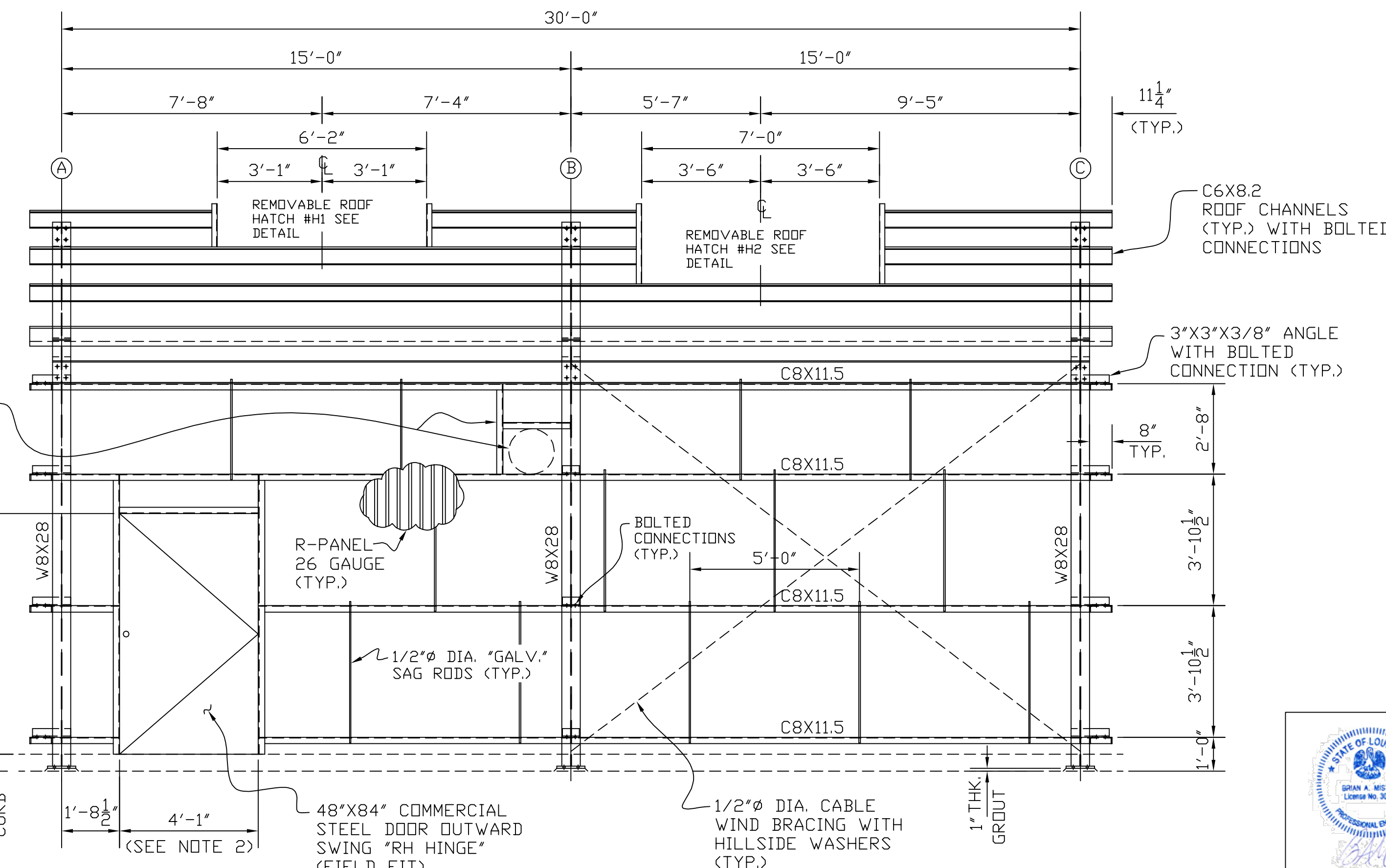
(LOOKING SOUTH)  
**FIREWATER PUMP BUILDING NORTH ELEVATION**  
 SCALE: 3/8"=1'-0"



(LOOKING WEST)  
**FIREWATER PUMP BUILDING EAST ELEVATION**  
 SCALE: 3/8"=1'-0"



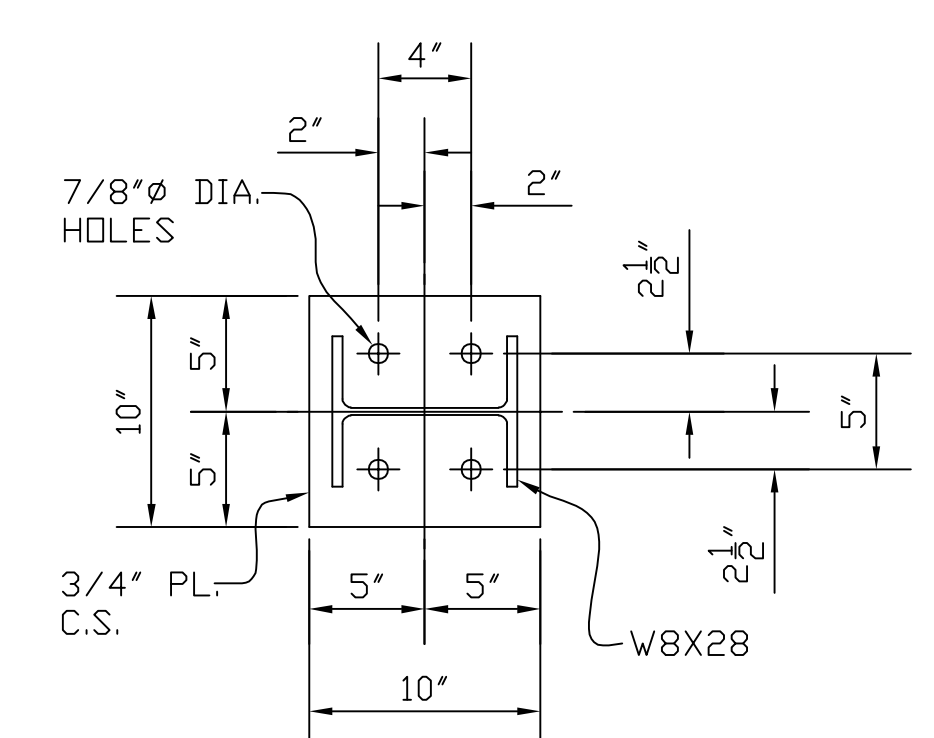
(LOOKING NORTH)  
**FIREWATER PUMP BUILDING SOUTH ELEVATION**  
 SCALE: 3/8"=1'-0"



(LOOKING EAST)  
**FIREWATER PUMP BUILDING WEST ELEVATION**  
 SCALE: 3/8"=1'-0"

DESIGN LOADS PER ASCE 7, LATEST EDITION AS NOTED BELOW.  
 \* ROOF LIVE LOAD 20 PSF (MINIMUM)  
 \* WIND SPEED, V=158 MPH  
 \* RISK CATEGORY III  
 \* EXPOSURE C

- NOTES:
- 1). ALL MATERIAL TO BE "HOT DIPPED GALVANIZED."
  - 2). VERIFY MANUFACTURER'S REQUIRED ROUGH OPENING.
  - 3). ALL ROOFING & WALLS WILL BE R-PANEL 26 GAUGE WITH TRIM COMPONENTS.
  - 4). NO GUTTERS REQUIRED.
  - 5). SEE DRAWING #PF-3555-2 FOR PLAN VIEW.
  - 6). SEE DRAWING #PF-3555-3 FOR REMOVABLE HATCH (H1) DETAIL.
  - 7). SEE DRAWING #PF-3555-4 FOR REMOVABLE HATCH (H2) DETAIL.
  - 8). DOORS & LOUVERS WILL BE PURCHASED SEPARATE.
  - 9). FIELD FIT ALL (3) DOORS.



**BASE PLATE DETAIL**  
 SCALE: 3"=1'-0"



**PICOU-FRADELLA CONSTRUCTION, CO.**  
 CHALMETTE, LA.

SCALE: NOTED | APPROVED BY: | DRAWN BY: P.M.B.  
 DATE: 6/24/25 | JOB#: PF-3555 | SHEET 1 OF 4

**FIREWATER PUMP BUILDING**  
 CHEVRON | DWG#: PF-3555-1