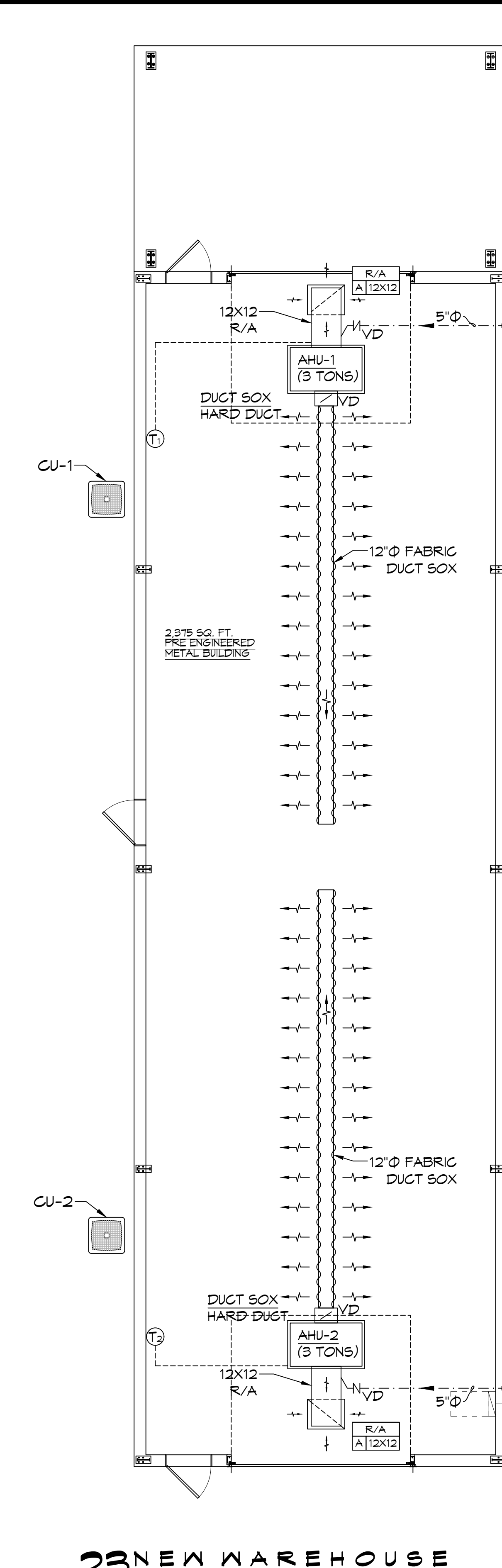
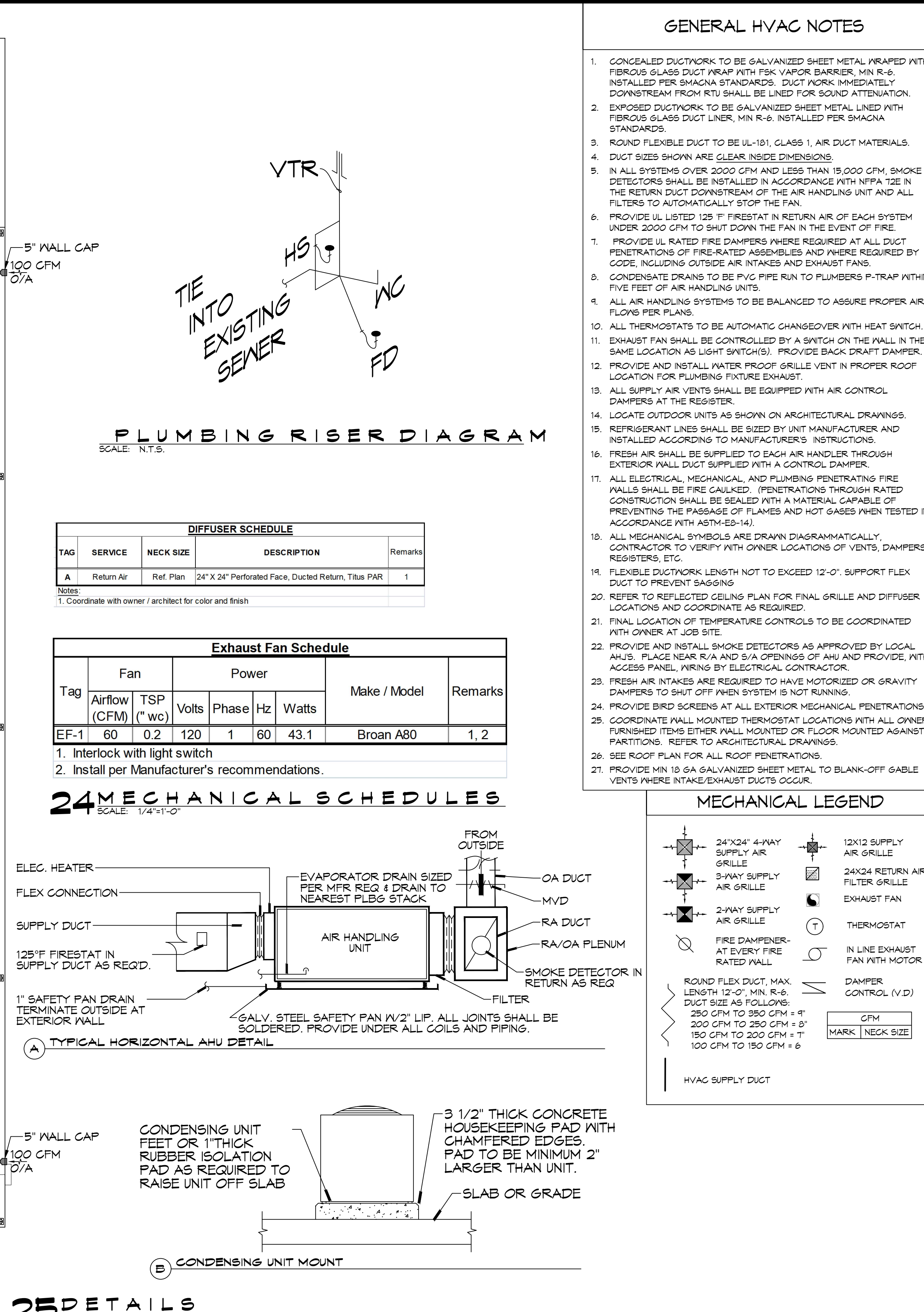


22 WAREHOUSE ADDITION
SCALE: 3/16"=1'-0"



23 NEW WAREHOUSE
SCALE: 3/16"=1'-0"



25 DETAILS
SCALE: N.T.S.

GENERAL HVAC NOTES

- CONCEALED DUCTWORK TO BE GALVANIZED SHEET METAL WRAPPED WITH FIBROUS GLASS DUCT WRAP WITH FSK VAPOR BARRIER, MIN R-6. INSTALLED PER SMACNA STANDARDS. DUCT WORK IMMEDIATELY DOWNSTREAM FROM RTU SHALL BE LINED FOR SOUND ATTENUATION.
- EXPOSED DUCTWORK TO BE GALVANIZED SHEET METAL LINED WITH FIBROUS GLASS DUCT LINER, MIN R-6. INSTALLED PER SMACNA STANDARDS.
- ROUND FLEXIBLE DUCT TO BE UL-181, CLASS 1, AIR DUCT MATERIALS.
- DUCT SIZES SHOWN ARE CLEAR INSIDE DIMENSIONS.
- IN ALL SYSTEMS OVER 2000 CFM AND LESS THAN 15,000 CFM, SMOKE DETECTORS SHALL BE INSTALLED IN ACCORDANCE WITH NFPA 12E IN THE RETURN DUCT DOWNSTREAM OF THE AIR HANDLING UNIT AND ALL FILTERS TO AUTOMATICALLY STOP THE FAN.
- PROVIDE UL LISTED 125°F FIRESTAT IN RETURN AIR OF EACH SYSTEM UNDER 2000 CFM TO SHUT DOWN THE FAN IN THE EVENT OF FIRE.
- FRESH AIR SHALL BE SUPPLIED TO EACH AIR HANDLER THROUGH EXTERIOR WALL DUCT SUPPLIED WITH A CONTROL DAMPER.
- ALL ELECTRICAL, MECHANICAL, AND PLUMBING PENETRATING FIRE WALLS SHALL BE FIRE CAULKED. (PENETRATIONS THROUGH RATED CONSTRUCTION SHALL BE SEALED WITH A MATERIAL CAPABLE OF PREVENTING THE PASSAGE OF FLAMES AND HOT GASES WHEN TESTED IN ACCORDANCE WITH ASTM-E8-14).
- ALL MECHANICAL SYMBOLS ARE DRAWN DIAGRAMMATICALLY. CONTRACTOR TO VERIFY WITH OWNER LOCATIONS OF VENTS, DAMPERS, REGISTERS, ETC.
- FLEXIBLE DUCTWORK LENGTH NOT TO EXCEED 12'-0". SUPPORT FLEX DUCT TO PREVENT SAGGING.
- REFER TO REFLECTED CEILING PLAN FOR FINAL GRILLE AND DIFFUSER LOCATIONS AND COORDINATE AS REQUIRED.
- FINAL LOCATION OF TEMPERATURE CONTROLS TO BE COORDINATED WITH OWNER AT JOB SITE.
- PROVIDE AND INSTALL SMOKE DETECTORS AS APPROVED BY LOCAL A.H.J.S. PLACE NEAR R/A AND S/A OPENINGS OF AHU AND PROVIDE, WITH ACCESS PANEL, WIRING BY ELECTRICAL CONTRACTOR.
- FRESH AIR INTAKES ARE REQUIRED TO HAVE MOTORIZED OR GRAVITY DAMPERS TO SHUT OFF WHEN SYSTEM IS NOT RUNNING.
- PROVIDE BIRD SCREENS AT ALL EXTERIOR MECHANICAL PENETRATIONS.
- COORDINATE WALL MOUNTED THERMOSTAT LOCATIONS WITH ALL OWNER FURNISHED ITEMS EITHER WALL MOUNTED OR FLOOR MOUNTED AGAINST PARTITIONS. REFER TO ARCHITECTURAL DRAWINGS.
- SEE ROOF PLAN FOR ALL ROOF PENETRATIONS.
- PROVIDE MIN 18 GA GALVANIZED SHEET METAL TO BLANK-OFF GABLE VENTS WHERE INTAKE/EXHAUST DUCTS OCCUR.

PLUMBING RISER DIAGRAM
SCALE: N.T.S.

DIFFUSER SCHEDULE

| TAG | SERVICE | NECK SIZE | DESCRIPTION | Remarks |
|-----|------------|-----------|---|---------|
| A | Return Air | Ref. Plan | 24" X 24" Perforated Face, Ducted Return, Titus PAR | 1 |

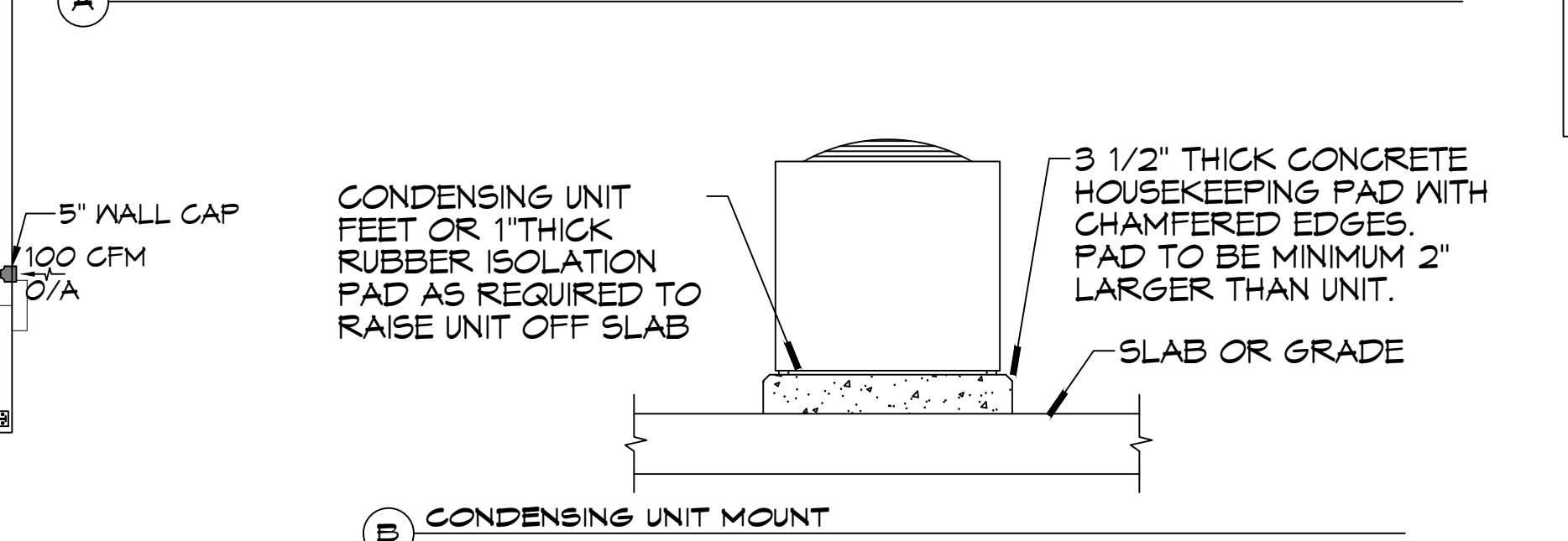
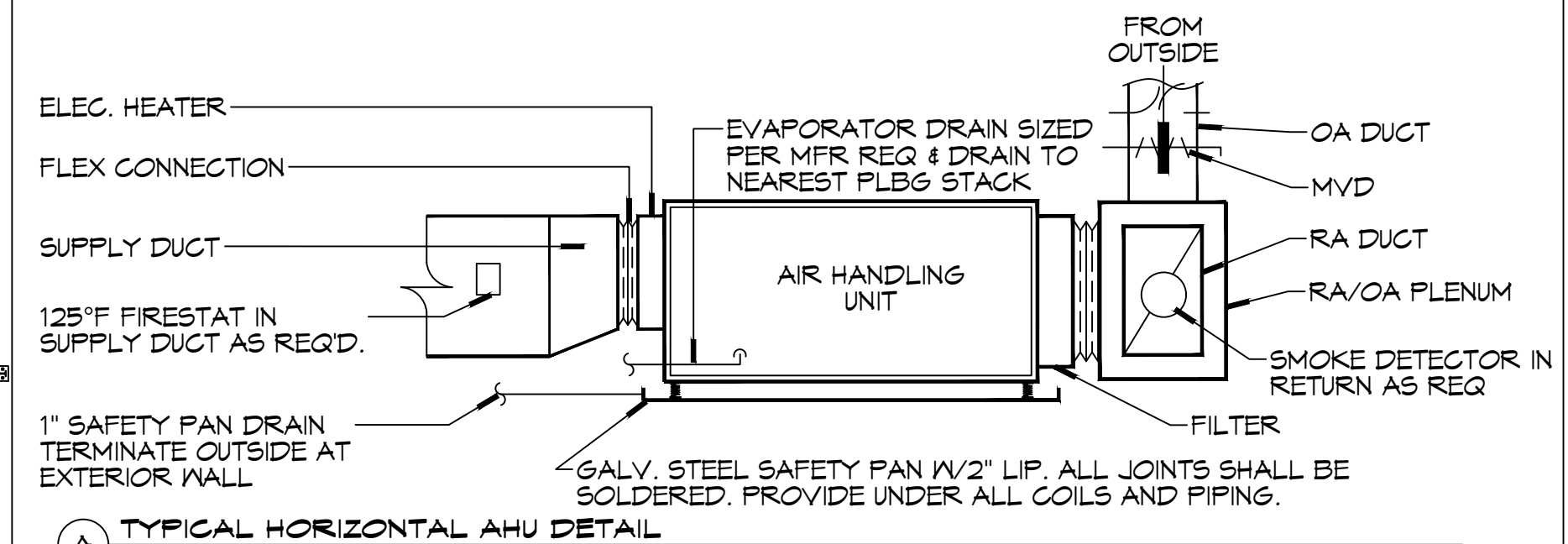
Notes:
1. Coordinate with owner / architect for color and finish.

Exhaust Fan Schedule

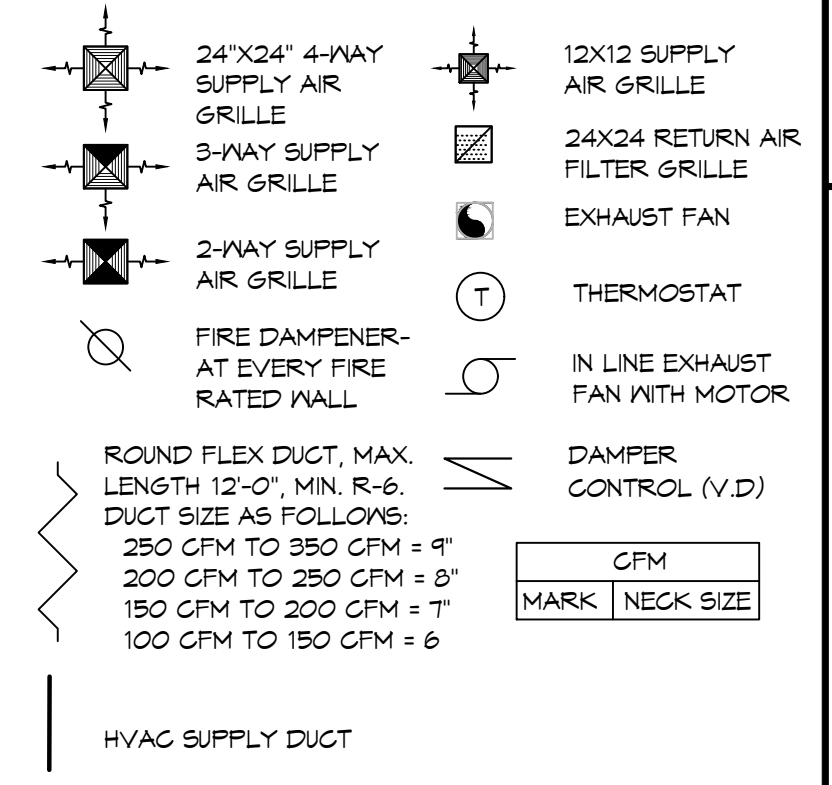
| Tag | Fan | | Power | | | | Make / Model | Remarks |
|------|---------------|-----------|-------|-------|----|-------|--------------|---------|
| | Airflow (CFM) | TSP ("wc) | Volts | Phase | Hz | Watts | | |
| EF-1 | 60 | 0.2 | 120 | 1 | 60 | 43.1 | Broan A80 | 1, 2 |

1. Interlock with light switch
2. Install per Manufacturer's recommendations.

24 MECHANICAL SCHEDULES
SCALE: 1/4"=1'-0"



MECHANICAL LEGEND



MIN-SPLIT SCHEDULE

| AIR HANDLER | | | | | | | | | | HEAT PUMP | | | | | | | | | | |
|-------------|------------|---------------|-----------------------------|-----------------------------|-----------------------|-------|----|-----|------|------------|--------------|------------------------|-----|------------------------|------|-------|----|-----|---------|--|
| Tag | Make | Model | Nom. Cooling Capacity (MBH) | Nom. Heating Capacity (MBH) | Maximum Airflow (CFM) | Power | | | Tag | Make | Model | Cooling Capacity (MBH) | | Heating Capacity (MBH) | | Power | | | Remarks | |
| | | | | | | VAC | PH | MCA | | | | Max | Min | Max | Min | VAC | PH | MCA | | |
| MS-1 | Mitsubishi | MSZ-GS24NA-U1 | 22.4 | 27.6 | 765 | 208 | 1 | 1 | HP-1 | Mitsubishi | MXZ-SM42NLHZ | 42 | 14 | 48 | 12.8 | 208 | 1 | 45 | 1, 2 | |
| MS-2 | Mitsubishi | MSZ-GS24NA-U1 | 22.4 | 27.6 | 765 | 208 | 1 | 1 | | | | | | | | | | | | |

NOTES:
1. Install per Manufacturer's recommendations.
2. Furnish with wall mounted thermostat.

DX SPLIT SYSTEM SCHEDULE

| AIR HANDLER | | | | | | | | | | | | | | CONDENSER | | | | | | | |
|-------------|-------|------------|--------------|-----------|---------|---------------|------|----------|-----------|-----------|-------|----|-----|-----------|--------------|-------|------------|-------|----|-----|---------|
| TAG | MAKE | MODEL | NOMINAL TONS | TOTAL CFM | O/A CFM | REQ'D COOLING | | Motor HP | ESP ("WC) | HEAT (Kw) | POWER | | | TAG | NOMINAL TONS | MAKE | MODEL | POWER | | | REMARKS |
| | | | | | | TMBH | SBH | | | | VAC | PH | MCA | | | | | VAC | PH | MCA | |
| AHU-1 | Trane | A5AHV006A1 | 3 | 990 | 100 | 33.6 | 24.6 | 3/4 | 0.4 | 3.6 | 240 | 1 | 30 | CU-1 | 3 | Trane | A5AC3036A1 | 208 | 1 | 18 | 1, 2 |
| AHU-2 | Trane | A5AHV006A1 | 3 | 990 | 100 | 33.9 | 25.1 | 3/4 | 0.4 | 3.6 | 240 | 1 | 30 | CU-2 | 3 | Trane | A5AC3036A1 | 208 | 1 | 18 | 1, 2 |

NOTES:
1. Provide inlet filter box, single point power connection, time delay relay, condensate overflow switch & programmable 7/24 thermostat.
2. Cooling capacities to be rated in accordance with AHRI standard 210/290 for ASHRAE standard design weather conditions in New Orleans, LA.

DAMMON ENGINEERING, INC.
LOUISIANA & MISSISSIPPI

www.dammonengineering.com
554 Old Spanish Trail
Slidell, LA 70458
PH: 985.649.5832

Chief Engineer: Brian Mistich, PE
info@dammonengineering.com

STATE OF LOUISIANA
BRIAN A. MISTICH
License No. 30187
PROFESSIONAL ENGINEER

NEW WAREHOUSES
J & Y INVESTMENTS LLC
424 SOUTH STREET
SLIDELL, LA 70460
JOB No: 08-21-2025
DATE: 2/18/25
DRAWN BY: GKP
CHECKED BY: GKP

SHEET TITLE:
MECHANICAL PLAN & PLUMBING RISER DIAGRAM

DRAWING NUMBER:
M101

SHEET No: 10 of 16