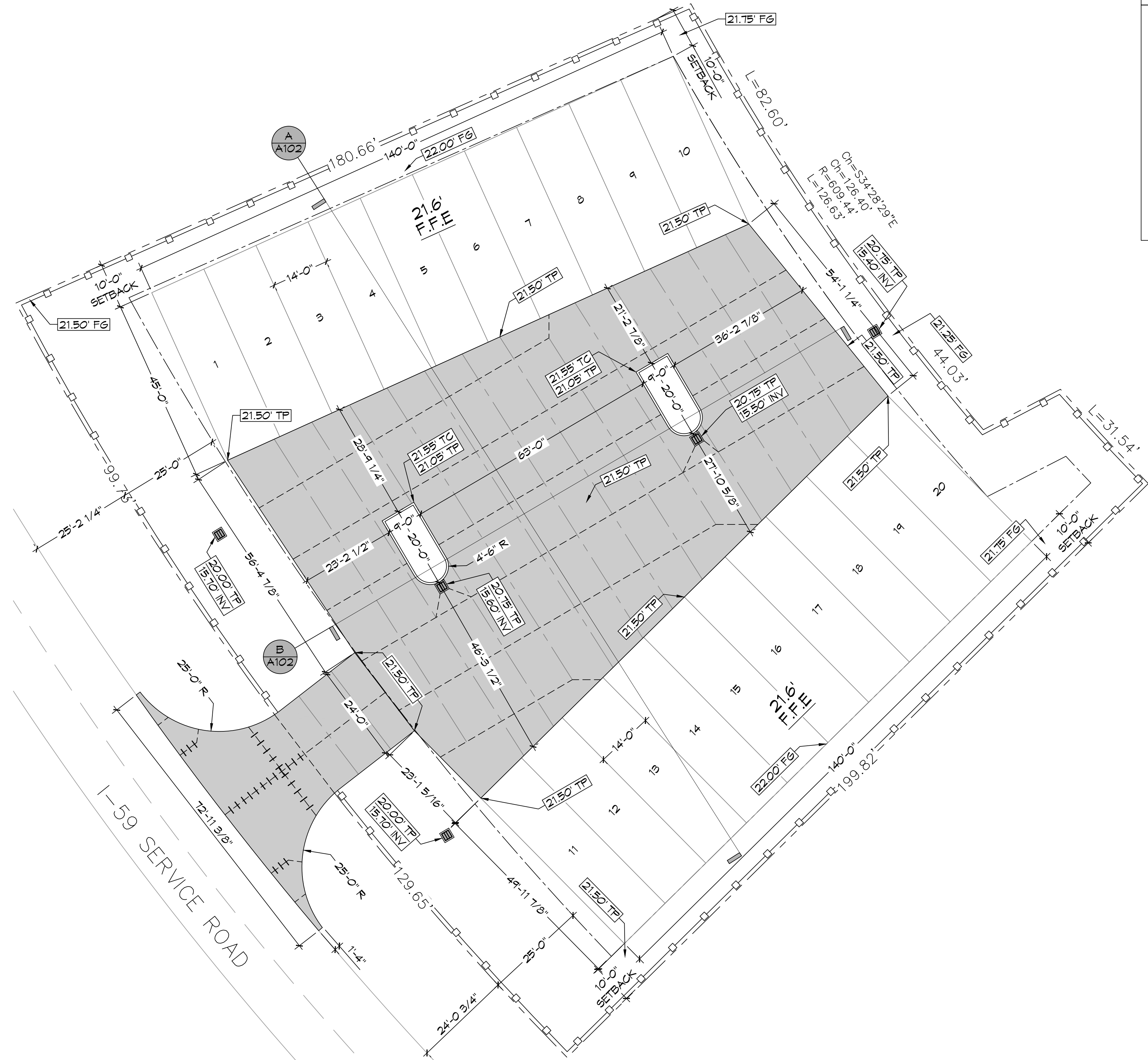
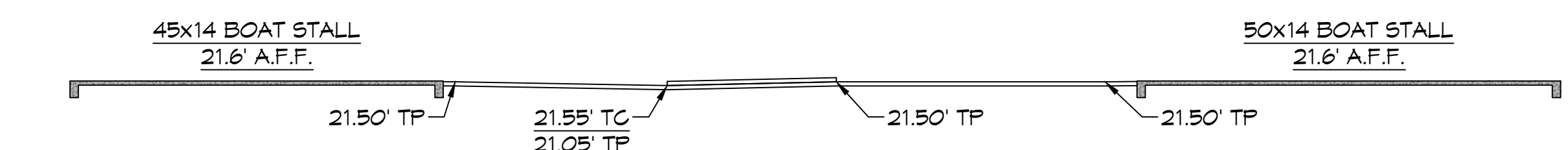


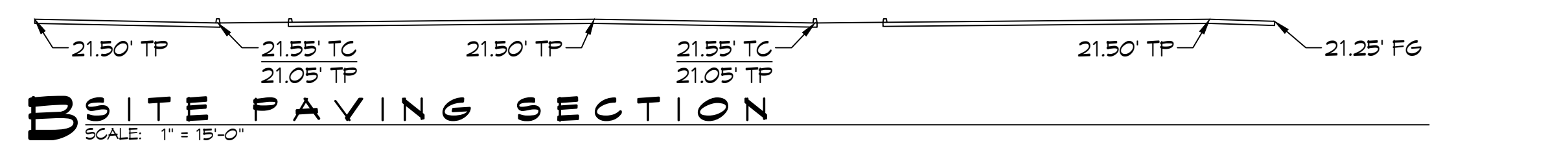
FILE NAME: A:\Projects\Newport\Main\Drawings\Site\02 - Paving\02 - Paving\02 - Paving.dwg  
 PLOT DATE: 8/1/2022 10:45:00 AM  
 PLOT SCALE: 1"=15'-0"  
 PLOT BY: BAW



**7 SITE PAVING PLAN**  
SCALE: 1" = 15'-0"



**ASITE PAVING SECTION**  
SCALE: 1" = 15'-0"



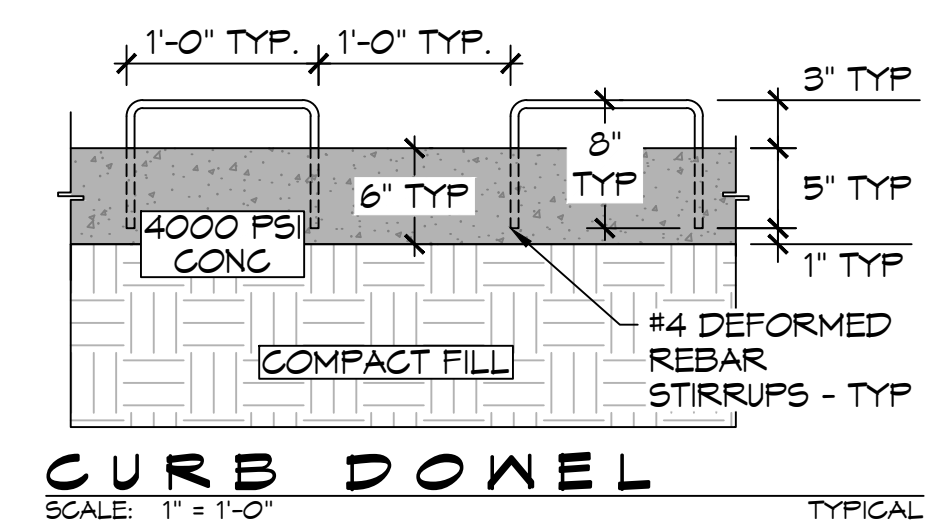
**BSITE PAVING SECTION**  
SCALE: 1" = 15'-0"

**PAVING LEGEND**

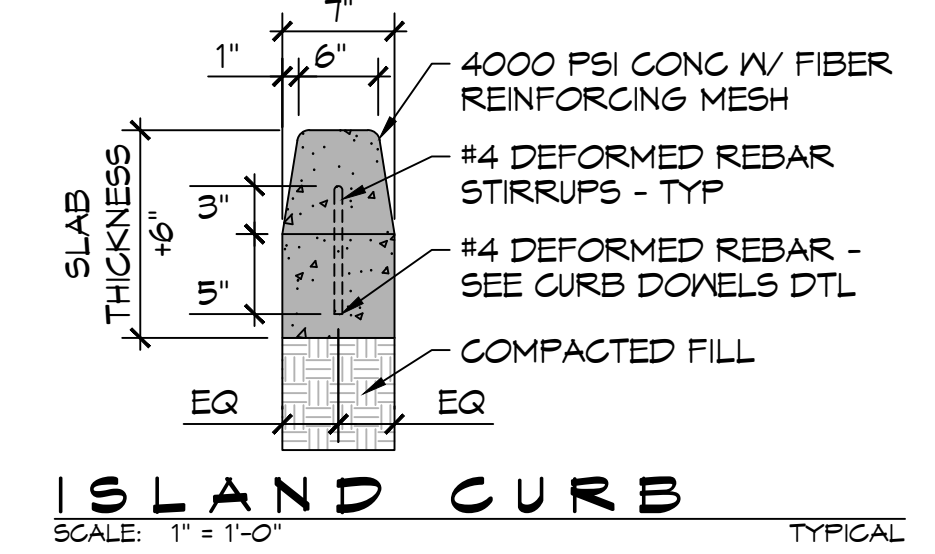
|  |   |
|--|---|
|  | LONGITUDINAL JOINTS - NO. 5 DEFORMED DONEL RODS 24" LONG @ 24" O. C.  |
|  | TRANSVERSE JOINTS (TJ) = NO. 5 SMOOTH DONEL RODS 24" LONG @ 24" O. C. |
|  | CATCH BASIN   |
|  | FINISH GRADE - UNPAVED  |
|  | TOP OF CURB   |
|  | TOP OF PAVEMENT   |
|  | INVERT  |

**GENERAL PAVING NOTES**

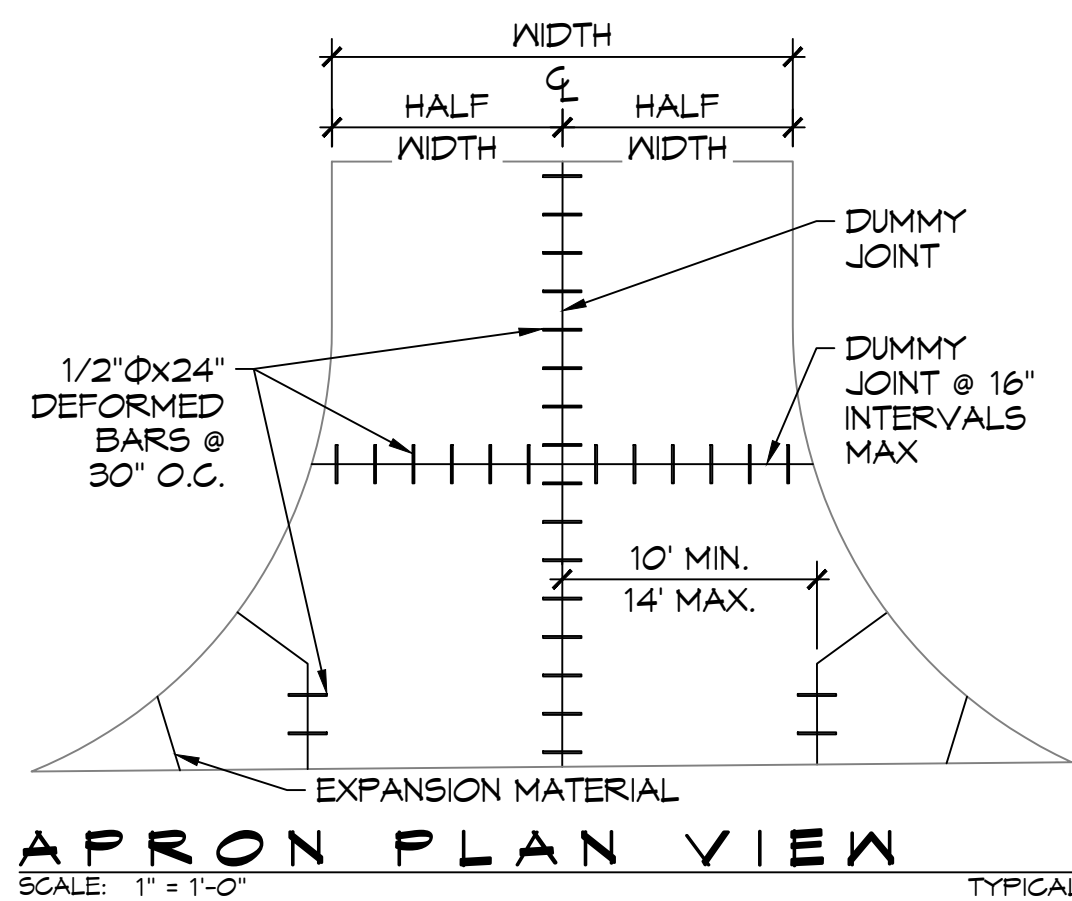
- ALL NEW CONCRETE SHALL HAVE A MINIMUM COMPRESSIVE STRENGTH OF 4,000 PSI AT 28 DAYS AND A MINIMUM THICKNESS OF 6". CONCRETE MIX SHALL BE IN ACCORDANCE WITH THE LATEST REVISION OF ASTM C-150 TYPE 1.
- CONCRETE PAVING THICKNESS SHALL VARY AS FOLLOWS:
  - APRONS & LOADING AREAS = 8" THICKNESS (INDICATED WITH CROSS HATCH WHERE OCCURS)
  - DRIVE LANES & PARKING AREAS = 6" THICKNESS (STANDARD UNO)
- ALL REINFORCING STEEL SHALL MEET ASTM-A615 (GRADE 60).
- ALL REINFORCING STEEL SHALL BE SECURELY SUPPORTED TO PREVENT BOTH VERTICAL AND HORIZONTAL MOVEMENT DURING CONCRETE PLACEMENT. ALL CONTROL AND EXPANSION JOINTS SHALL BE LOCATED AND INSTALLED AS SHOWN ON THE PAVING PLAN AND IN ACCORDANCE WITH THE MANUFACTURER'S RECOMMENDATIONS.
- ALL SUB GRADE FILL SHALL BE SELECT GRANULAR MATERIAL COMPACTED TO 95% STANDARD PROCTOR DENSITY IN A MAXIMUM OF 6" LIFTS.
- ANY WORK WITHIN THE ROADWAY OR ADJACENT TO THE ROADWAY CAUSING AN INTERFERENCE TO VEHICULAR TRAFFIC MUST CONFORM TO THE REQUIREMENTS SET FORTH BY THE UNIFORM MANUAL OF TRAFFIC CONTROL DEVICES OF THE STATE OF LOUISIANA. THE CONTRACTOR MUST FURNISH ALL NECESSARY TRAFFIC SIGNS AND/OR BARRICADES AND MAINTAIN THEM DURING CONSTRUCTION ACTIVITY.



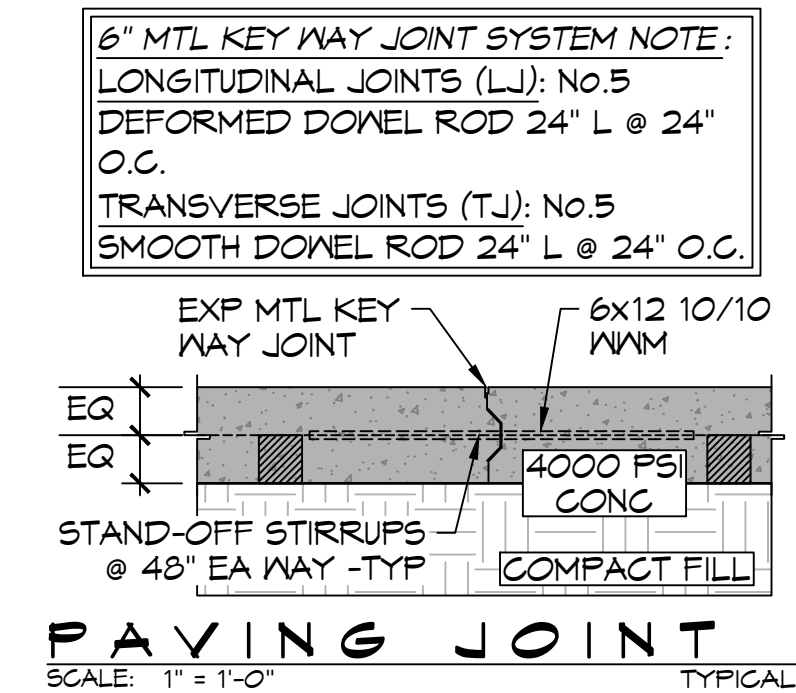
**CURB DONEL**  
SCALE: 1" = 1'-0" TYPICAL



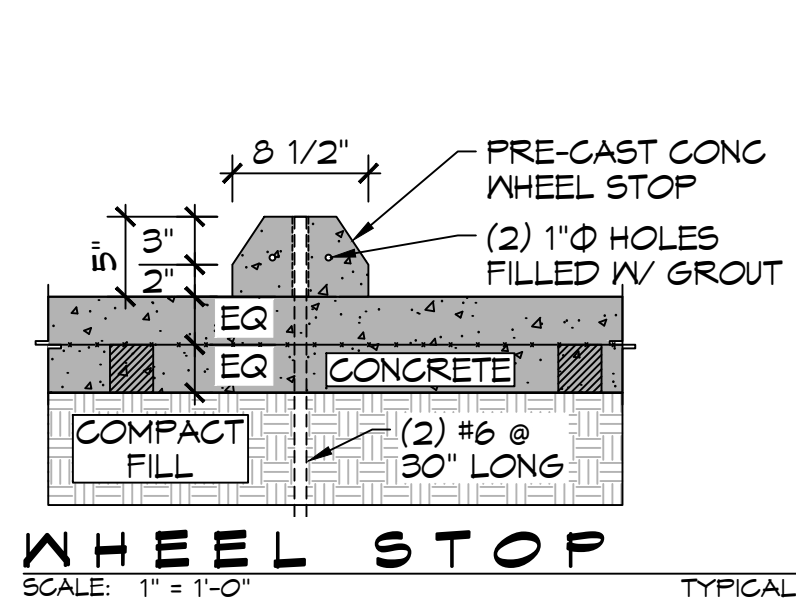
**ISLAND CURB**  
SCALE: 1" = 1'-0" TYPICAL



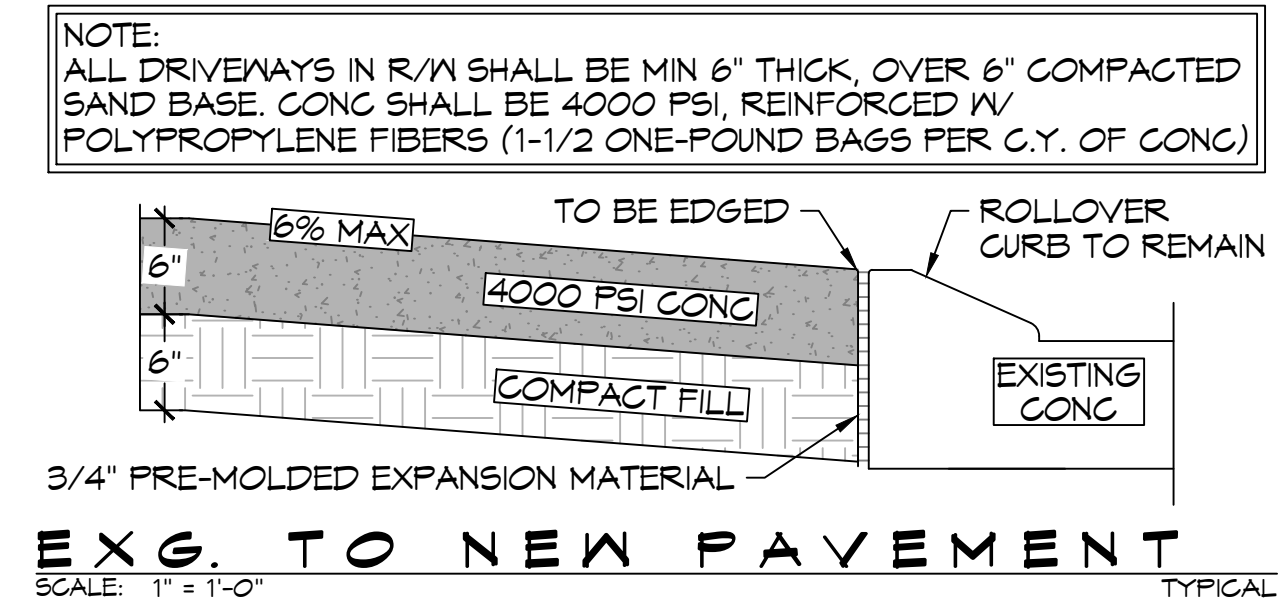
**APRON PLAN VIEW**  
SCALE: 1" = 1'-0" TYPICAL



**PAVING JOINT**  
SCALE: 1" = 1'-0" TYPICAL



**WHEEL STOP**  
SCALE: 1" = 1'-0" TYPICAL



**EXG. TO NEW PAVEMENT**  
SCALE: 1" = 1'-0" TYPICAL

DAMMON

ENGINEERING, INC.

LOUISIANA & MISSISSIPPI

Chief Engineer: Brian Whitich, PE  
 554 Old Spanish Trail  
 Slidell, LA 70468  
 www.dammonengineering.com  
 info@dammonengineering.com  
 PH: 985.649.5832

| # | DESCRIPTION | DATE |
|---|-------------|------|
|   |             |      |
|   |             |      |
|   |             |      |

SEAL:

|  |  |
|--|--|
|  |  |
|--|--|

|                  |                 |
|------------------|-----------------|
| DATE: 07-20-2022 | DRAWN BY: BAW   |
| DATE: 07-20-2022 | CHECKED BY: BAW |

NEW BOAT STORAGE

59 INVESTMENTS

594 SERVICE ROAD  
 PEARL RIVER, LA 70452  
 JOB No: C102  
 DRAWN BY: BAW

SHEET TITLE:  
 SITE PAVING PLAN  
 DRAWING NUMBER:  
C102  
 SHEET No: 4 of 11