

FOR QUESTIONS, CALL THE  
 Louisiana Office  
 REGION 27  
 PHONE: (985) 781 - 4107  
 EMAIL: reg27@econair.com

**HOOD INFORMATION - JOB#8180079**

HOOD NO	TAG	MODEL	MANUFACTURER	LENGTH	MAX COOKING TEMP	TYPE	APPLIANCE DUTY	DESIGN CFM/FT	TOTAL EXH CFM	EXHAUST PLENUM RISER(S)						TOTAL SUPPLY CFM	HOOD CONSTRUCTION	HOOD CONFIG		
										WIDTH	LENG	HEIGHT	DIA	CFM	VEL			SP	END TO END	ROW
1		5424 EX-2-PSP-F	ECON-AIR	7' 11"	600 DEG	I	HEAVY	225	1781			4'	14'	1781	1666	-0.379'	1425	430 SS WHERE EXPOSED	LEFT	ALONE
2		5424 EX-2-PSP-F	ECON-AIR	7' 11"	600 DEG	I	HEAVY	225	1781			4'	14'	1781	1666	-0.379'	1425	430 SS WHERE EXPOSED	RIGHT	ALONE

**HOOD INFORMATION**

HOOD NO	TAG	FILTER(S)						LIGHT(S)				UTILITY CABINET(S)				FIRE SYSTEM PIPING	HOOD HANGING WEIGHT	
		TYPE	QTY	HEIGHT	LENGTH	EFFICIENCY @ 7 MICRONS	QTY	TYPE	WIRE GUARD	LOCATION	SIZE	FIRE SYSTEM		ELECTRICAL	SWITCHES			
												TYPE	SIZE	MODEL #	QUANTITY			
1		SS BAFFLE WITH HANDLES	5	20"	16'	30%	3	L55 SERIES E26	NO								NO	434 LBS
2		SS BAFFLE WITH HANDLES	5	20"	16'	30%	3	L55 SERIES E26	NO								NO	434 LBS

**HOOD OPTIONS**

HOOD NO	TAG	OPTION
1		LEFT END STANDOFF (FINISHED) 1' WIDE 54' LONG INSULATED. WRAPPER CHANNEL - FRONT.
2		RIGHT END STANDOFF (FINISHED) 1' WIDE 54' LONG INSULATED. WRAPPER CHANNEL - FRONT.

**PERFORATED SUPPLY PLENUM(S)**

HOOD NO	TAG	POS	LENGTH	WIDTH	HEIGHT	TYPE	RISER(S)				
							WIDTH	LENG	DIA	CFM	SP
1		Front	96'	16'	6'	MUA	12"	28"		712	0.191'
						MUA	12"	28"		712	0.191'
2		Front	96'	16'	6'	MUA	12"	28"		712	0.191'
						MUA	12"	28"		712	0.191'



JOB Gonzo	
LOCATION La Place, LA,	
DATE 8/18/2025	JOB # 8180079
DWG # 1	DRAWN BY HMB
REV.	SCALE 3/8" = 1'-0"



**GREASE DUCT & CHIMNEY SPECIFICATIONS:**

PROVIDE GREASE DUCT EQUAL TO ECON-AIR MODEL "EDW" ROUND 20 GAUGE 430 STAINLESS STEEL DUCTWORK. MODEL "EDW" IS LISTED TO UL-1978 AND IS INSTALLED USING "V" CLAMP LOCKING CONNECTIONS SEALED WITH 3M FIRE BARRIER 2000 PLUS. MODEL "EDW" DOES NOT REQUIRE WELDING PROVIDING IT HAS BEEN INSTALLED PER THE MANUFACTURES INSTALLATION GUIDE.

PROVIDE RATED ACCESS DOORS AT EVERY CHANGE IN DIRECTION AND EVERY 12' ON CENTER. PER MANUFACTURES LISTING MODEL "EDW" HORIZONTAL RUNS LESS THAN 75 FT. CAN BE SLOPED 1/16" PER 12", HORIZONTAL RUNS MORE THAN 75 FT. CAN BE SLOPED 3/16" PER 12". DUCT SHOULD BE SLOPED AS MUCH AS POSSIBLE TO REDUCE THE CHANCE OF GREASE ACCUMULATION IN HORIZONTAL RUNS.

IF THE DUCT OR CHIMNEY IS WITHIN 18 INCHES OF COMBUSTIBLE MATERIAL, PROVIDE UL-2221 OR UL-103 HT LISTED DOUBLE WALL GREASE DUCT OR DOUBLE WALL CHIMNEY EQUAL TO ECON-AIR MODEL "EDW- 2R, 2R TYPE HT, 3R, OR 3Z" ROUND 20 GAUGE 430 STAINLESS INNER DUCT INSULATED WITH A 24 GAUGE 430 STAINLESS OUTER SHELL.

**PATENT NUMBERS**

AC-PSP (UNITED STATES) - US PATENT 7963830 B2.  
AC-PSP WALL (CANADA) - CA PATENT 2820509.  
AC-PSP ISLAND (CANADA) - CA PATENT 2520330.

ECON-AIR RECOMMENDS THE USE OF LISTED, PRE-FABRICATED ROUND GREASE EXHAUST DUCT TO REDUCE STATIC PRESSURE IN THE SYSTEM, MINIMIZE INSTALLATION AND INSPECTION TIMES, AND ENSURE DUCT IS LIQUID TIGHT

**HVAC DISTRIBUTION NOTE**

HIGH VELOCITY DIFFUSERS OR HVAC RETURNS SHOULD NOT BE PLACED WITHIN TEN (10) FEET OF THE EXHAUST HOOD. PERFORATED DIFFUSERS ARE RECOMMENDED.

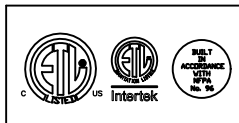
**VERIFY CEILING HEIGHT**

\_\_\_' - \_\_\_"

HEIGHT REQUIRED TO VERIFY THAT HOOD FITS SPACE AND TO SIZE THE ENCLOSURE PANELS

**CUSTOMER APPROVAL TO MANUFACTURE:**

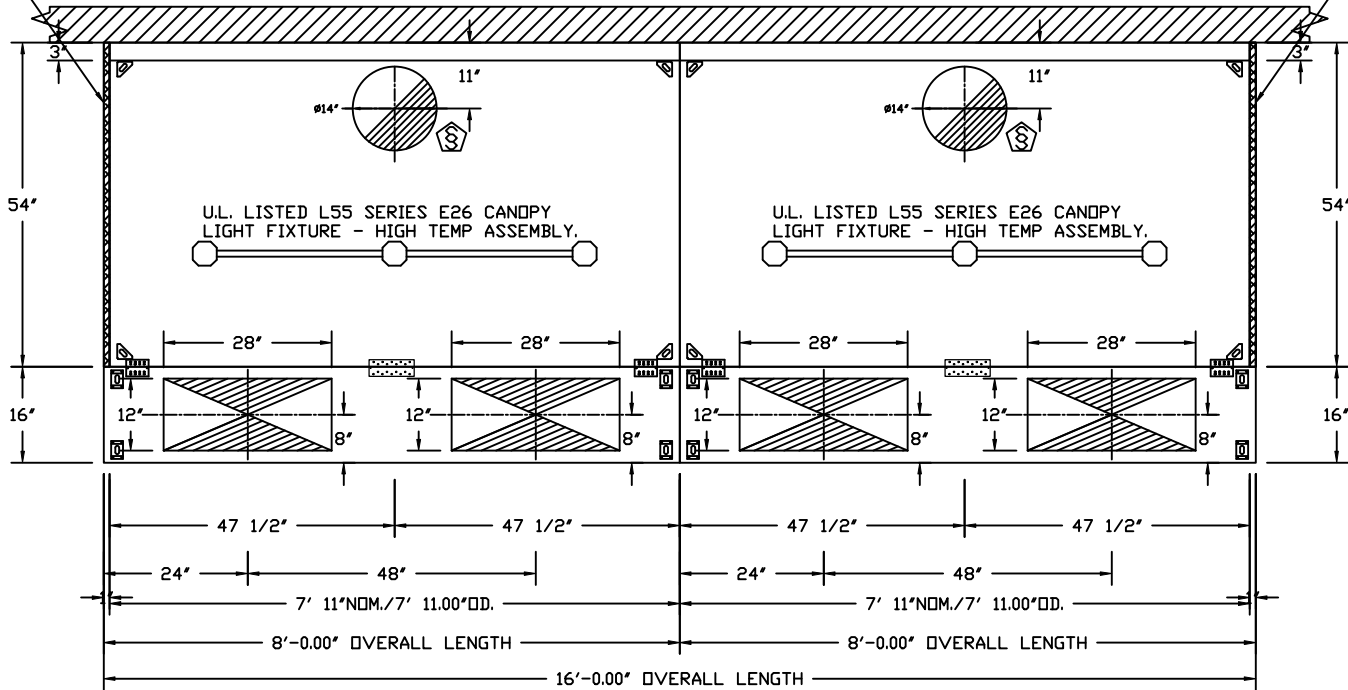
APPROVED AS NOTED   
APPROVED WITH NO EXCEPTION TAKEN   
REVISE AND RESUBMIT   
SIGNATURE \_\_\_\_\_  
YOUR TITLE \_\_\_\_\_ DATE \_\_\_\_\_



<i>JOB</i> Gonzo	
<i>LOCATION</i> La Place, LA,	
<i>DATE</i> 8/18/2025	<i>JOB #</i> 8180079
<i>DWG #</i> 2	<i>DRAWN BY</i> HMB
<i>REV.</i>	<i>SCALE</i> 3/8" = 1'-0"

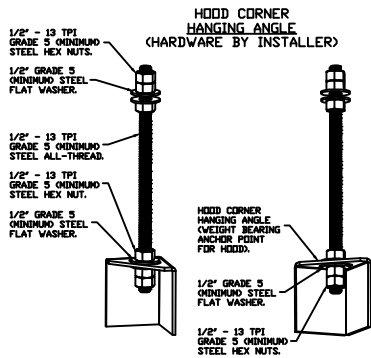
1' LAYER OF INSULATION  
FACTORY INSTALLED IN  
1.00" END STANDOFF MEETS  
0" REQUIREMENTS CLEARANCE  
TO COMBUSTIBLE SURFACES.

1' LAYER OF INSULATION  
FACTORY INSTALLED IN  
1.00" END STANDOFF MEETS  
0" REQUIREMENTS CLEARANCE  
TO COMBUSTIBLE SURFACES.



PLAN VIEW - HOOD #1  
7' 11.00" LONG 5424EX-2-PSP-F

PLAN VIEW - HOOD #2  
7' 11.00" LONG 5424EX-2-PSP-F

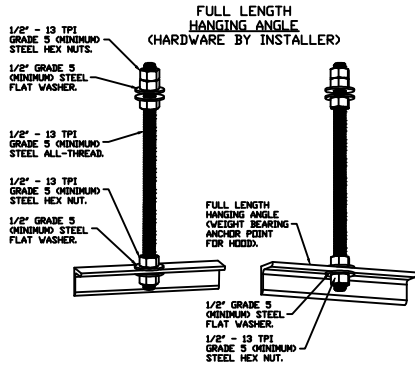


**ASSEMBLY INSTRUCTIONS**

HANGING ANGLE MUST BE SUPPORTED WITH 1/2" - 13 TPI GRADE 5 (MINIMUM) ALL-THREAD. SANDWICH HANGING ANGLES AND CEILING ANCHOR POINTS WITH 1/2" GRADE 5 (MINIMUM) STEEL FLAT WASHERS AND 1/2" - 13 TPI GRADE 5 (MINIMUM) HEX NUTS AS SHOWN. MUST USE DOUBLED HEX NUT CONFIGURATION BENEATH HOOD HANGING ANGLES AND ABOVE CEILING ANCHORS. MAINTAIN 1/4" OF EXPOSED THREADS BENEATH BOTTOM HEX NUT. TORQUE ALL HEX NUTS TO 57 FT-LBS.

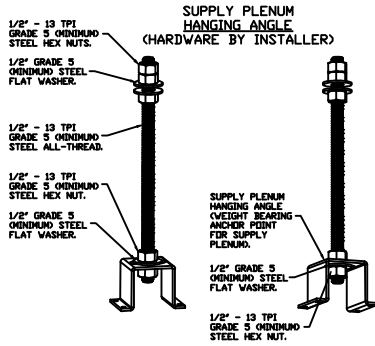


JOB Gonzo	
LOCATION La Place, LA,	
DATE 8/18/2025	JOB # 8180079
DWG # 3	DRAWN BY HMB
REV.	SCALE 3/8" = 1'-0"



**ASSEMBLY INSTRUCTIONS**

HANGING ANGLE MUST BE SUPPORTED WITH 1/2" - 13 TPI GRADE 5 (MINIMUM) ALL-THREAD. SANDWICH HANGING ANGLES AND CEILING ANCHOR POINTS WITH 1/2" GRADE 5 (MINIMUM) STEEL FLAT WASHERS AND 1/2" - 13 TPI GRADE 5 (MINIMUM) HEX NUTS AS SHOWN. MUST USE DOUBLED HEX NUT CONFIGURATION ABOVE CEILING ANCHORS. SINGLE HEX NUT BENEATH HANGING ANGLE IS ACCEPTABLE FOR FULL LENGTH HANGING ANGLES. MAINTAIN 1/4" OF EXPOSED THREADS BENEATH BOTTOM HEX NUT. TORQUE ALL HEX NUTS TO 57 FT-LBS.



**ASSEMBLY INSTRUCTIONS**

HANGING ANGLE MUST BE SUPPORTED WITH 1/2" - 13 TPI GRADE 5 (MINIMUM) ALL-THREAD. SANDWICH HANGING ANGLES AND CEILING ANCHOR POINTS WITH 1/2" GRADE 5 (MINIMUM) STEEL FLAT WASHERS AND 1/2" - 13 TPI GRADE 5 (MINIMUM) HEX NUTS AS SHOWN. MUST USE DOUBLED HEX NUT CONFIGURATION ABOVE CEILING ANCHORS. SINGLE HEX NUT BENEATH HANGING ANGLE IS ACCEPTABLE FOR PSP HANGING ANGLES. MAINTAIN 1/4" OF EXPOSED THREADS BENEATH BOTTOM HEX NUT. TORQUE ALL HEX NUTS TO 57 FT-LBS.

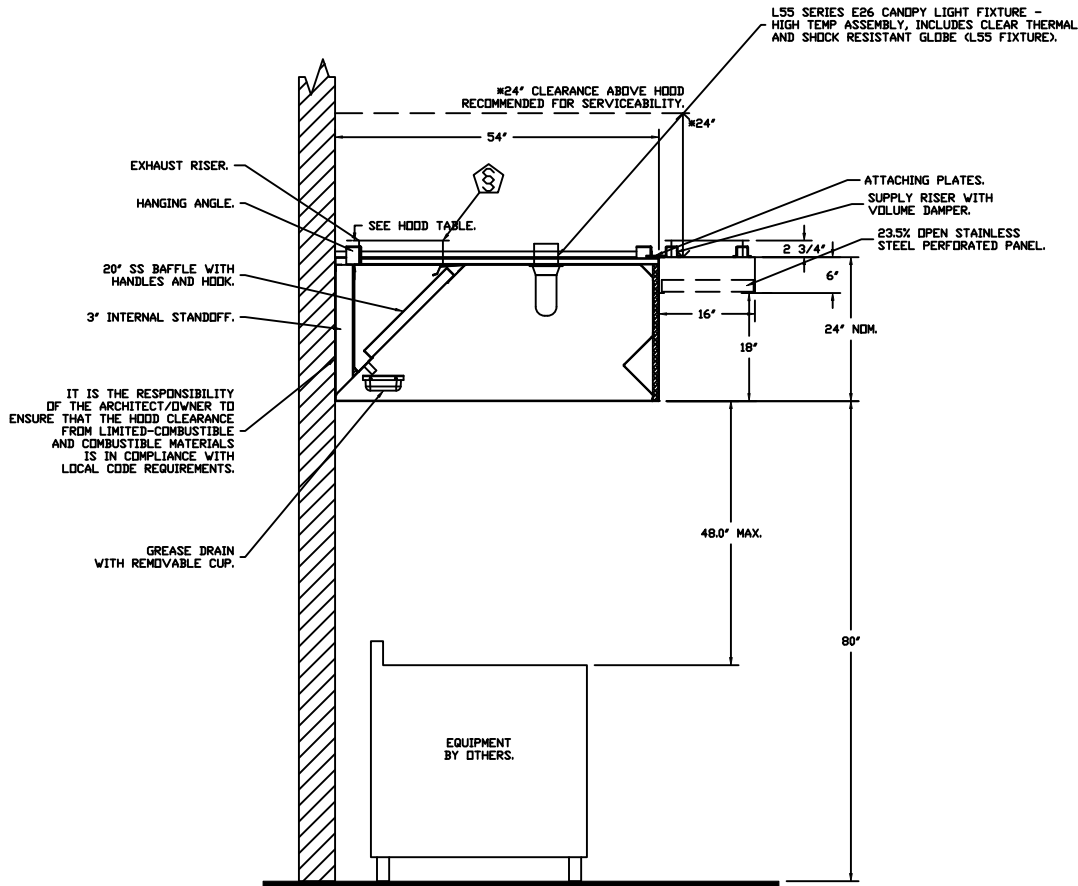
**CLEARANCE TO COMBUSTIBLES**

HOODS #	SURFACE	*CLEARANCE
1	TOP	18"
	FRONT	0"
	BACK	18"
	RIGHT	0"
2	TOP	18"
	FRONT	0"
	BACK	18"
	RIGHT	0"

- \*0" CLEARANCE TO COMBUSTIBLES CONFORMS TO UL710 STANDARD.



JOB Gonzo	
LOCATION La Place, LA,	
DATE 8/18/2025	JOB # 8180079
DWG # 4	DRAWN BY HMB
REV.	SCALE 3/8" = 1'-0"



**SECTION VIEW - MODEL 5424EX-2-PSP-F  
HOOD - #1**



<i>JOB</i> Gonzo	
<i>LOCATION</i> La Place, LA,	
<i>DATE</i> 8/18/2025	<i>JOB #</i> 8180079
<i>DWG #</i> 5	<i>DRAWN BY</i> HMB
<i>REV.</i>	<i>SCALE</i> 3/8" = 1'-0"



**EXHAUST FAN INFORMATION - JOB#8180079**

FAN UNIT NO	TAG	QTY	FAN UNIT MODEL #	MANUFACTURER	CFM	ESP	RPM	MOTOR ENCL	HP	BHP	PHASE	VOLT	FLA	DISCHARGE VELOCITY	WEIGHT (LBS)	SONES
1		1	EADU180H	ECON-AIR	1781	1.000	971	DDP,PREMIUM	1.000	0.6230	3	208	3.8	411 FPM	156	9.6
2		1	EADU180H	ECON-AIR	1781	1.000	971	DDP,PREMIUM	1.000	0.6230	3	208	3.8	411 FPM	156	9.6

**MUA FAN INFORMATION - JOB#8180079**

FAN UNIT NO	TAG	QTY	FAN UNIT MODEL #	BLOWER	HOUSING	MIN CFM	DESIGN CFM	ESP	RPM	MOTOR ENCL	HP	BHP	PHASE	VOLT	FLA	MCA	MDCP	WEIGHT (LBS)	SONES
3		1	EA-A2-20D	20MF-2-MDD	A2	1500	2850	0.500	1064	DDP,PREMIUM	1.500	0.7120	3	208	6.6	8.3A	15A	411	10.2

**FAN ACCESSORIES**

FAN UNIT NO	TAG	EXHAUST			SUPPLY			
		GREASE CUP	GRAVITY DAMPER	WALL MDUNT	SIDE DISCHARGE	GRAVITY DAMPER	MOTORIZED DAMPER	WALL MDUNT
1		YES						
2		YES						



<i>JOB</i> Gonzo	
<i>LOCATION</i> La Place, LA,	
<i>DATE</i> 8/18/2025	<i>JOB #</i> 8180079
<i>DWG #</i> 7	<i>DRAWN BY</i> HMB
<i>REV.</i>	<i>SCALE</i> 3/8" = 1'-0"

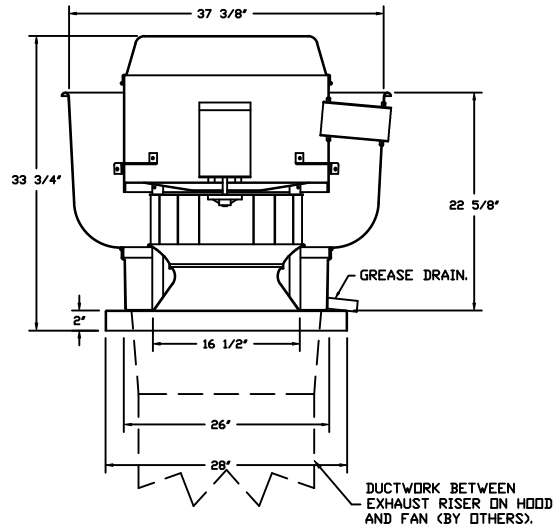
**FAN OPTIONS**

FAN UNIT NO	TAG	QTY	DESCRIPTION
1		1	GREASE BOX
		1	HINGE KIT - SHIPS LOOSE FOR CURB SUPPLIED BY OTHERS
		1	2 YEAR PARTS WARRANTY
2		1	GREASE BOX
		1	HINGE KIT - SHIPS LOOSE FOR CURB SUPPLIED BY OTHERS
		1	2 YEAR PARTS WARRANTY
3		1	SIZE 2 UNTEMPERED COMMERCIAL DOWN DISCHARGE FOR DIRECT DRIVE AHUS
		1	2 YEAR PARTS WARRANTY



<i>JOB</i> Gonzo	
<i>LOCATION</i> La Place, LA,	
<i>DATE</i> 8/18/2025	<i>JOB #</i> 8180079
<i>DWG #</i> 8	<i>DRAWN BY</i> HMB
<i>REV.</i>	<i>SCALE</i> 3/8" = 1'-0"

FANS #1, #2 - FADUI80H EXHAUST FAN



**FEATURES:**

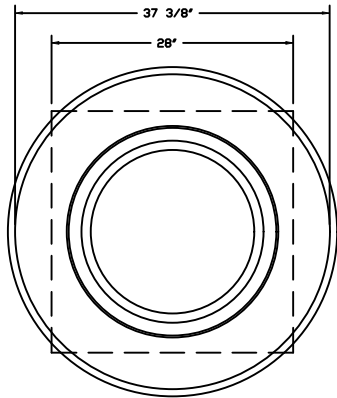
- DIRECT DRIVE CONSTRUCTION (NO BELTS/PULLEYS).
- ROOF MOUNTED FANS.
- RESTAURANT MODEL.
- UL705 AND UL762 AND ULC-S645
- VARIABLE SPEED CONTROL.
- INTERNAL WIRING.
- THERMAL OVERLOAD PROTECTION (SINGLE PHASE).
- HIGH HEAT OPERATION 300°F (149°C).
- GREASE CLASSIFICATION TESTING.
- NEMA 3R SAFETY DISCONNECT SWITCH.

**NORMAL TEMPERATURE TEST**  
 EXHAUST FAN MUST OPERATE CONTINUOUSLY WHILE EXHAUSTING AIR AT 300°F (149°C) UNTIL ALL FAN PARTS HAVE REACHED THERMAL EQUILIBRIUM, AND WITHOUT ANY DETERIORATING EFFECTS TO THE FAN WHICH WOULD CAUSE UNSAFE OPERATION.

**ABNORMAL FLARE-UP TEST**  
 EXHAUST FAN MUST OPERATE CONTINUOUSLY WHILE EXHAUSTING BURNING GREASE VAPORS AT 600°F (316°C) FOR A PERIOD OF 15 MINUTES WITHOUT THE FAN BECOMING DAMAGED TO ANY EXTENT THAT COULD CAUSE AN UNSAFE CONDITION.

**OPTIONS**

- GREASE BOX.
- HINGE KIT - SHIPS LOOSE FOR CURB SUPPLIED BY OTHERS.
- 2 YEAR PARTS WARRANTY.



TOP VIEW

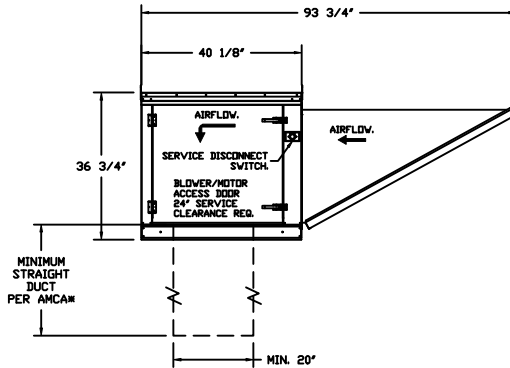
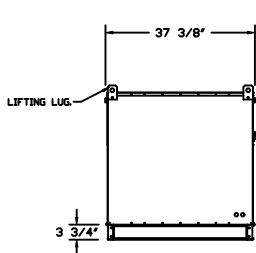
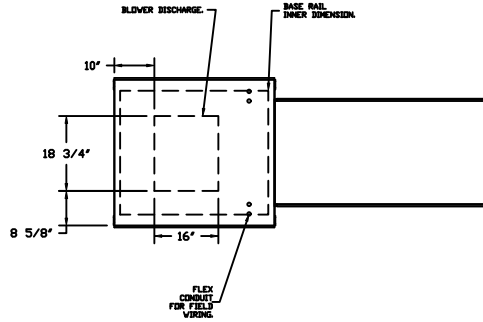


JOB Gonzo	
LOCATION La Place, LA,	
DATE 8/18/2025	JOB # 8180079
DWG # 9	DRAWN BY HMB
REV.	SCALE 3/8" = 1'-0"

FAN #3 EA-A2-20D - SUPPLY FAN

1. UNTEMPERED SUPPLY UNIT WITH 20' MIXED FLOW DIRECT DRIVE FAN IN SIZE #2 HOUSING.
2. INTAKE HOOD WITH EZ FILTERS.
3. DOWN DISCHARGE - AIR FLOW RIGHT -> LEFT.
4. DOWN DISCHARGE CONSTRUCTION FOR SIZE 2 UNTEMPERED DIRECT DRIVE AHUS.
5. HINGED DOUBLE WALL INSULATED DDDR ASSEMBLY (BURNER/BLOWER SECTION).
6. 2 YEAR PARTS WARRANTY.

NOTE: SUPPLY DUCT MUST BE INSTALLED TO MEET SMACNA STANDARDS. A MINIMUM STRAIGHT DUCT LENGTH MUST BE MAINTAINED DOWNSTREAM OF UNIT DISCHARGE AS OUTLINED IN AMCA PUBLICATION 201. WHEN USING RECTANGULAR DUCTWORK, ELBOWS MUST BE RADIUS THROAT, RADIUS BACK WITH TURNING VANES. FLEXIBLE DUCTWORK AND SQUARE THROAT/SQUARE BACK ELBOWS SHOULD NOT BE USED. ANY TRANSITION AND/OR TURNS IN THE DUCTWORK WILL CAUSE SYSTEM EFFECT. SYSTEM EFFECT WILL DRASTICALLY INCREASE STATIC PRESSURE AND REDUCE AIRFLOW. DO NOT RELY ON UNIT TO SUPPORT DUCT IN ANY WAY. FAILURE TO PROPERLY SIZE DUCTWORK MAY CAUSE SYSTEM EFFECTS AND REDUCE PERFORMANCE OF THE EQUIPMENT. SUGGESTED STRAIGHT DUCT SIZE IS 20" x 20".



**GREASE DUCT & CHIMNEY SPECIFICATIONS:**  
 PROVIDE GREASE DUCT EQUAL TO ECON-AIR MODEL 'EDW' ROUND 20 GAUGE 430 STAINLESS STEEL DUCTWORK. MODEL 'EDW' IS LISTED TO UL-1978 AND IS INSTALLED USING 'V' CLAMP LOCKING CONNECTIONS SEALED WITH 3M FIRE BARRIER 2000 PLUS. MODEL 'EDW' DOES NOT REQUIRE WELDING PROVIDING IT HAS BEEN INSTALLED PER THE MANUFACTURER'S INSTALLATION GUIDE.  
 PROVIDE RATED ACCESS DOORS AT EVERY CHANGE IN DIRECTION AND EVERY 12' ON CENTER. PER MANUFACTURER'S LISTING MODEL 'EDW' HORIZONTAL RUNS LESS THAN 75 FT. CAN BE SLOPED 1/16" PER 12", HORIZONTAL RUNS MORE THAN 75 FT. CAN BE SLOPED 3/16" PER 12". DUCT SHOULD BE SLOPED AS MUCH AS POSSIBLE TO REDUCE THE CHANCE OF GREASE ACCUMULATION IN HORIZONTAL RUNS.  
 IF THE DUCT OR CHIMNEY IS WITHIN 18 INCHES OF COMBUSTIBLE MATERIAL, PROVIDE UL-2221 OR UL-103 HT LISTED DOUBLE WALL GREASE DUCT OR DOUBLE WALL CHIMNEY EQUAL TO ECON-AIR MODEL 'EDW- 2R, 2R TYPE HT, 3R, OR 3Z' ROUND 20 GAUGE 430 STAINLESS INNER DUCT INSULATED WITH A 24 GAUGE 430 STAINLESS OUTER SHELL.

**CUSTOMER APPROVAL TO MANUFACTURE:**

APPROVED AS NOTED	<input type="checkbox"/>
APPROVED WITH NO EXCEPTION TAKEN	<input type="checkbox"/>
REVISE AND RESUBMIT	<input type="checkbox"/>
SIGNATURE _____	_____
YOUR TITLE _____	DATE _____

**GREASE BOX INSTALLATION**

**CLOSED POSITION**

**OPEN POSITION**

**PARTS INCLUDED**  
 GREASE BOX  
 GREASE BOX COVER  
 GREASE PIPE  
 SHEET METAL SCREWS  
 3 - LONG (3/4" LG.)

**GREASE BOX FIELD INSTALLATION**

**STEP 1)**  
 ATTACH GREASE BOX COVER TO THE CURB, HOLD 3" DIMENSION AS SHOWN ON PIC. 1. SCREW GREASE BOX COVER TO CURB USING (3) LONG (3/4" LG.) SCREWS AS SHOWN ON PIC. 2.

**STEP 2)**  
 ATTACH GREASE BOX TO GREASE BOX COVER, SLIDE AND DROP, AS SHOWN ON PIC. 3.

**STEP 3)**  
 INSTALL GREASE PIPE AS SHOWN ON PIC. 4.

**NOTE: UL 705 INSTALL.**



JOB Gonzo	
LOCATION La Place, LA,	
DATE 8/18/2025	JOB # 8180079
DWG # 10	DRAWN BY HMB
REV.	SCALE 1/4" = 1'-0"

# Exhaust Fan Wiring

JOB 8180079 - Gonzo

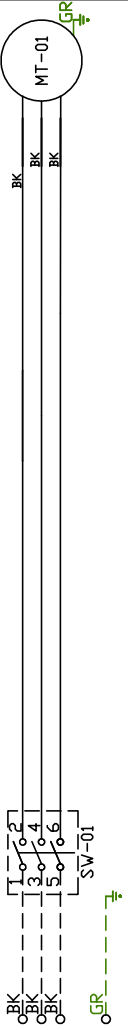
DRAWING NUMBER EXH8180079-1

SHIP DATE 8/18/2025

MODEL RADU180H

Installed Options

- 1
- 2
- 3
- 4
- 5
- 6
- 7
- 8
- 9
- 10
- 11
- 12
- 13
- 14
- 15
- 16
- 17
- 18
- 19
- 20
- 21
- 22
- 23



Label	Component Description	Location
MT-01	Fan Motor	[3]
SV-01	Main disconnect switch	[3]

MOTOR INFO  
 EXHAUST 10HP-208V-3P-3.8FLA  
 VFD PART: ESV751N02YXB571

ELECTRICAL INFORMATION  
 MOTOR CTRL MOP: 48A  
 MOTOR/CTRL MOP: 15A

NOTES  
 - - - - DENOTES FIELD WIRING  
 \_\_\_\_\_ DENOTES INTERNAL WIRING

WIRE COLOR  
 BK - BLACK YW - YELLOW  
 BL - BLUE GR - GREEN  
 BR - BROWN GY - GRAY  
 OR - ORANGE PR - PURPLE  
 RD - RED PK - PINK  
 WH - WHITE

# Exhaust Fan Wiring

JOB 8180079 - Gonzo

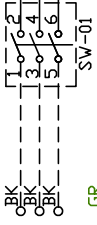
DRAWING NUMBER EXH8180079-2

SHIP DATE 8/18/2025

MODEL RADU180H

1

2



Label Component Identification Location

MT-01 Fan Motor [3]

SV-01 Main disconnect switch [3]

Installed Options

MOTOR INFO  
EXHAUST 10HP-208V-3P-3.8FLA  
VFD PART: ESV751N02YXB571

ELECTRICAL INFORMATION  
MOTOR CTRL MOP: 48A  
MOTOR/CTRL MOP: 15A

NOTES  
--- DENOTES FIELD WIRING  
\_\_\_ DENOTES INTERNAL WIRING

WIRE COLOR

BK - BLACK YW - YELLOW  
BL - BLUE GR - GREEN  
BR - BROWN GY - GRAY  
OR - ORANGE PR - PURPLE  
RD - RED PK - PINK  
WH - WHITE

23

# AirHandler Wiring

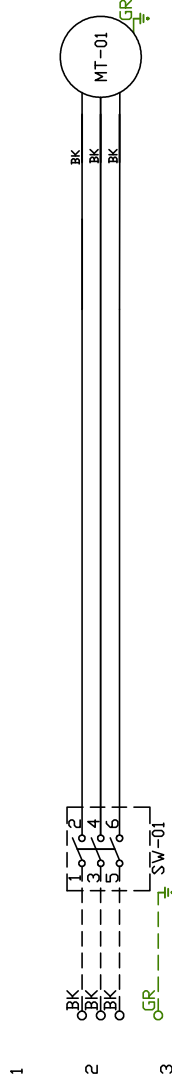
JOB 8180079 - Gonzo

DRAWING NUMBER A8180079-3

SHIP DATE 8/18/2025

MODEL EA-A2-20D

ATTENTION ELECTRICIAN!  
 DROP FOR DISCONNECT CONNECTION  
 IS FACTORY SUPPLIED  
 CONNECT POWER TO THE DROP



## Installed Options

Label Description Location

MT-01 Supply motor [2]

SW-01 Main disconnect switch [2]

SUPPLY MOTOR\_INFD MOTOR\_INFD  
 VFD PART: 15HP-208V-3P-6FLA  
 ESV152N02YXB571

ELECTRICAL INFORMATION  
 MOTOR/CTRL CIRCUIT MOP: 83A  
 MOTOR/CTRL CIRCUIT MOP: 15A

NOTES  
 --- DENOTES FIELD WIRING  
 --- DENOTES INTERNAL WIRING

WIRE COLOR  
 BK-BLACK YW - YELLOW RD - RED  
 BL-BLUE GR - GREEN WH - WHITE  
 BR - BROWN GY - GRAY PK - PINK  
 OR - ORANGE PR - PURPLE

**ELECTRICAL PACKAGE – JOB#8180079**

NO	TAG	PACKAGE #	LOCATION	SWITCHES		OPTION	FANS CONTROLLED				
				LOCATION	QUANTITY		TYPE	Φ	HP	VOLT	FLA
1		SC-32111002	WALL MOUNT IN SS BOX	FACE MOUNT LEFT SIDE OF HOOD	1 LIGHT	SMART CONTROLS BASIC	EXHAUST	3	1,000	208	3.8
				HOOD # 1	1 FAN		EXHAUST	3	1,000	208	3.8
							SUPPLY	3	1,500	208	6.6



<i>JOB</i> Gonzo	
<i>LOCATION</i> La Place, LA,	
<i>DATE</i> 8/18/2025	<i>JOB #</i> 8180079
<i>DWG #</i> 14	<i>DRAWN BY</i> HMB
<i>REV.</i>	<i>SCALE</i> 3/8" = 1'-0"

JOB NO  
8180079

MODEL NUMBER  
SC-32111002

DRAWN BY  
INSTALL

DESCRIPTION OF OPERATION:  
3 Phase w/ control for 2 Exhaust Fans, 1 Supply Fan, Exhaust on in Fire, Lights out in Fire, INVERTER DUTY 3 PHASE  
MOTOR REQUIRED FOR USE WITH VFD.

JOB NAME  
Gonzo

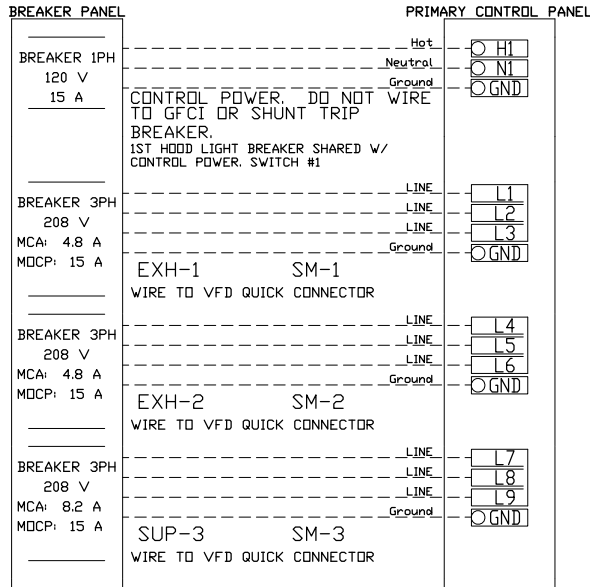
DATE  
8/18/2025

DWG NO  
ECP #1-1

**BREAKER PANEL TO PRIMARY CONTROL PANEL**

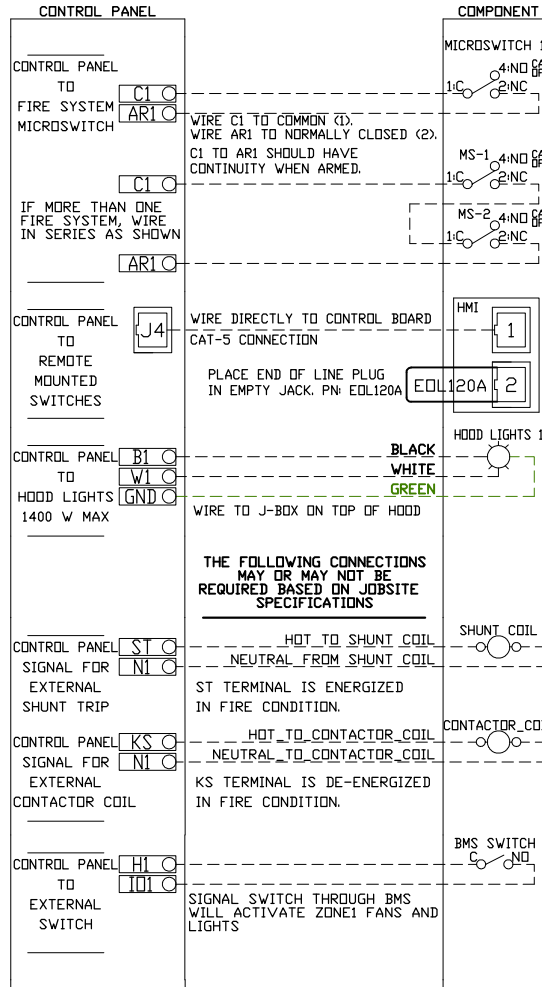
Responsibility: Electrician

BREAKER SIZE SHOWN IS THE MAXIMUM ALLOWED



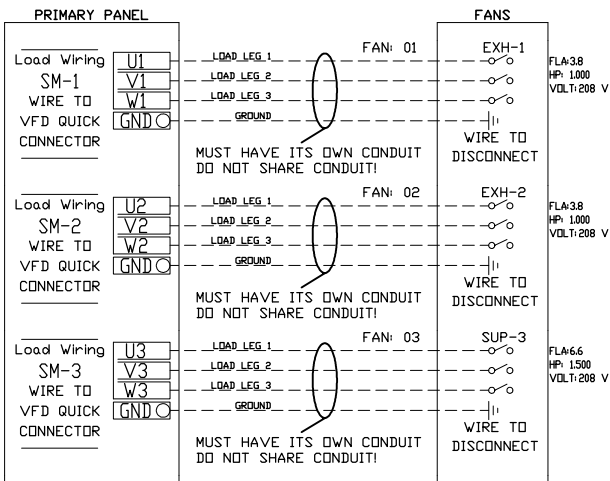
**CONTROL PANEL TO ACCESSORY ITEMS**

Responsibility: Electrician

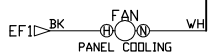
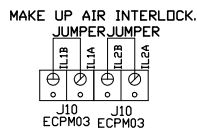
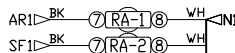
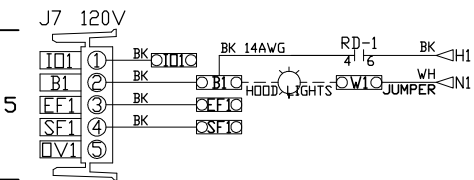
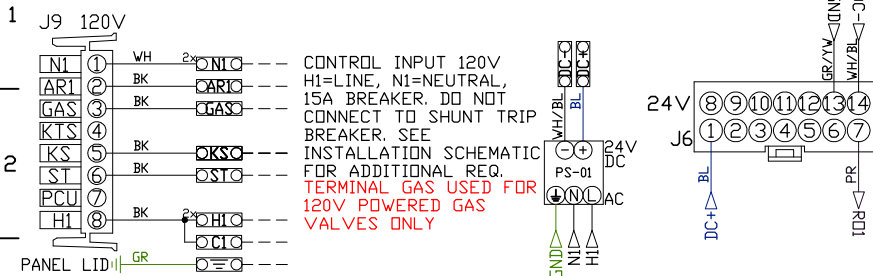


**CONTROL PANEL TO FANS**

Responsibility: Electrician

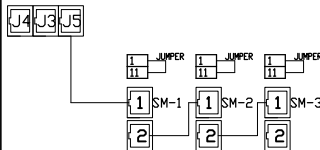


UNLESS SPECIFIED OTHERWISE, ALL FACTORY AC WIRING 16 AWG. ALL FACTORY DC WIRING 18 AWG.

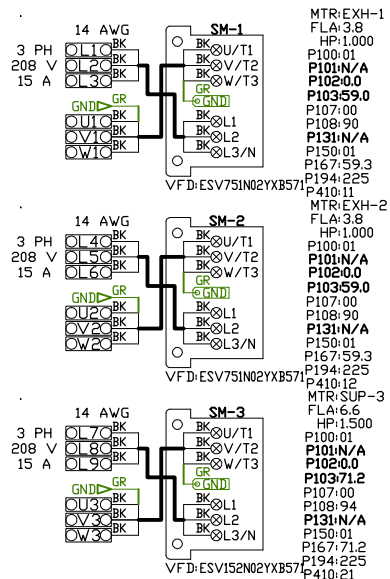


NOTE: All items on ECPM03 J5 line to be daisy chained from one component to the next, with EDL120A at end of line. Place PN EDL120A in empty RJ45 port.

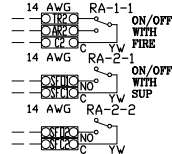
ECPM03/DAISY CHAIN



MOTOR POWER CIRCUIT



DRY CONTACTS (SHOWN DE-ENERGIZED)



FACTORY WIRING SCHEMATIC CIRCUIT BOARDS

RA-x	120 VAC	RD-x	24 VDC
RELAY		RELAY	
NO	4 3	NO	4 3
NC	2 1	NC	2 1
COIL	8 7	COIL	8 7
COM	6 5	COM	6 5

COMPONENT LIST

LABEL	DESCRIPTION
ST-X	Starter varies
DL-X	Overload varies
C-X	Contactors varies
PS-1	Power Sup. 24VDC MDP18-24A-1C
RA-x	120V Relay DPDT 34.1100840
RD-x	24VDC Light Relay 34.1100880

LEGEND

---	FIELD WIRING
---	FACTORY WIRING
BK-	BLACK
BL-	BLUE
BR-	BROWN
OR-	ORANGE
WH-	WHITE
YW-	YELLOW
GY-	GREY
PR-	PURPLE
RD-	RED
GR-	GREEN
DR/BL-	DR/BL STRIPE
BL/RD-	BL/RD STRIPE
RD/GN-	RD/GN STRIPE
WH/BL-	WH/BL STRIPE

JOB NAME

Gozto  
DRAWING TITLE  
SC-3211002

DESCRIPTION OF OPERATION  
3 Phase w/ control for 2 Exhaust Fans, 1 Supply Fan, Exhaust on in Fire, Lights out in Fire, INVERTER DUTY 3 PHASE MOTOR REQUIRED FOR USE WITH VFD.

JOB NO	DRAWN BY
8180079	
TYPE	DATE
FACTORY	8/18/2025
DWG NO	ECP #1-2