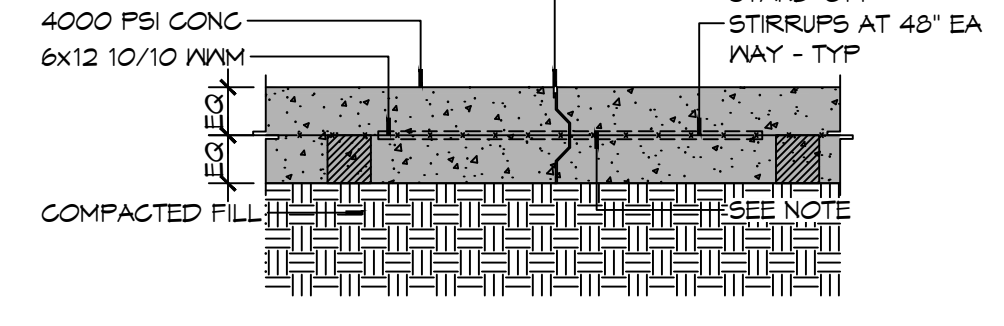


**6" MTL KEYWAY JOINT SYSTEM NOTE:**  
 LONGITUDINAL JOINTS (LJ): NO. 5 DEFORMED DOVEL ROD 24" L @ 24" O.C.  
 TRANSVERSE JOINTS (TJ): NO. 5 SMOOTH DOVEL ROD 24" L @ 24" O.C.  
 EXP MTL KEYWAY JOINT



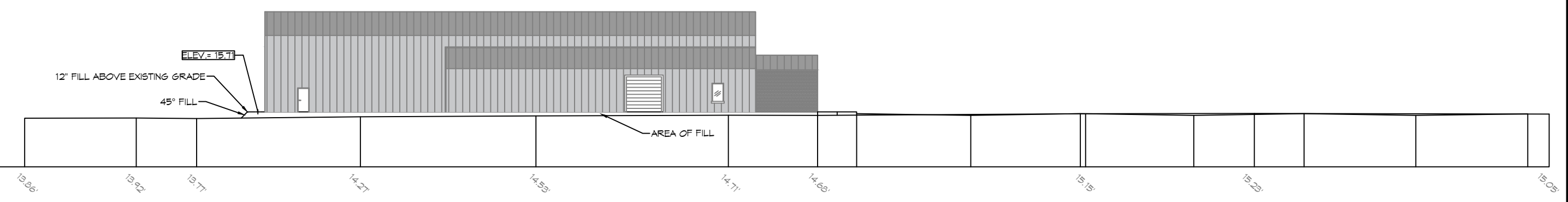
**(A) TYPICAL PAVEMENT JOINT**  
**PAVING DETAIL**  
 SCALE: 1" = 1'-0"

**GENERAL PAVING NOTES**

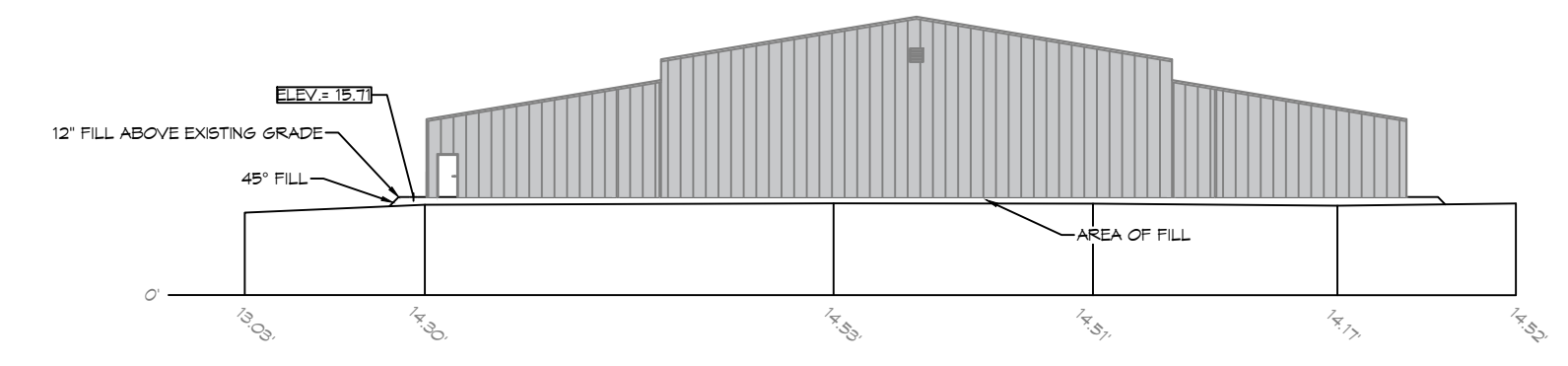
- ALL NEW CONCRETE SHALL HAVE A MINIMUM COMPRESSIVE STRENGTH OF 4,000 PSI AT 28 DAYS AND A MINIMUM THICKNESS OF 6". CONCRETE MIX SHALL BE IN ACCORDANCE WITH THE LATEST REVISION OF ASTM C-150 TYPE 1.
- CONCRETE PAVING THICKNESS SHALL VARY AS FOLLOWS:
  - APRONS & LOADING AREAS = 8" THICKNESS (INDICATED WITH CROSS HATCH WHERE OCCURS)
  - DRIVE LANES & PARKING AREAS = 6" THICKNESS (STANDARD UNO)
- ALL REINFORCING STEEL SHALL MEET ASTM-A615 (GRADE 60).
- ALL REINFORCING STEEL SHALL BE SECURELY SUPPORTED TO PREVENT BOTH VERTICAL AND HORIZONTAL MOVEMENT DURING CONCRETE PLACEMENT. ALL CONTROL AND EXPANSION JOINTS SHALL BE LOCATED AND INSTALLED AS SHOWN ON THE PAVING PLAN AND IN ACCORDANCE WITH THE MANUFACTURER'S RECOMMENDATIONS.
- ALL SUB GRADE FILL SHALL BE SELECT GRANULAR MATERIAL COMPACTED TO 95% STANDARD PROCTOR DENSITY IN A MAXIMUM OF 6" LIFTS.
- ANY WORK WITHIN THE ROADWAY OR ADJACENT TO THE ROADWAY CAUSING AN INTERFERENCE TO VEHICULAR TRAFFIC MUST CONFORM TO THE REQUIREMENTS SET FORTH BY THE UNIFORM MANUAL OF TRAFFIC CONTROL DEVICES OF THE STATE OF LOUISIANA. THE CONTRACTOR MUST FURNISH ALL NECESSARY TRAFFIC SIGNS AND/OR BARRICADES AND MAINTAIN THEM DURING CONSTRUCTION ACTIVITY.

**PAVING LEGEND**

- TOP OF CONCRETE OR CURB ELEVATION
- TOP OF GRATE ELEVATION
- INVERT OF PIPE ELEVATION
- LONGITUDINAL JOINTS (LJ) = NO. 5 DEFORMED DOVEL RODS 24" LONG @ 24" O.C.
- TRANSVERSE JOINTS (TJ) = NO. 5 SMOOTH DOVEL RODS 24" LONG @ 24" O.C.
- PARKING WHEEL STOP
- NEW CATCH BASIN
- EXISTING TOPO
- NEW TOPO



**CROSS SECTION**  
 SCALE: 1" = 30'-0"



**CROSS SECTION**  
 SCALE: 1" = 30'-0"

**DAMMON ENGINEERING, INC.**  
 LOUISIANA & MISSISSIPPI  
 Chief Engineer: Brian A. Mistich, PE  
 www.dammonengineering.com  
 info@dammonengineering.com  
 554 Old Spanish Trail  
 Slidell, LA 70468  
 PH: 985.649.5832 F: 985.641.9950

#	DESCRIPTION	DATE



NEW AUDITORIUM  
 POPE JOHN PAUL II  
 HIGH SCHOOL  
 1901 JAGUAS DR  
 SLIDELL, LA 70461  
 JOB No: 2522 DATE: 02-15-2026  
 DRAWN BY: BAW  
 CHECKED BY: CKD

SHEET TITLE:  
 PAVING PLAN  
 DRAWING NUMBER:  
**C103**  
 SHEET No: 5 of 17