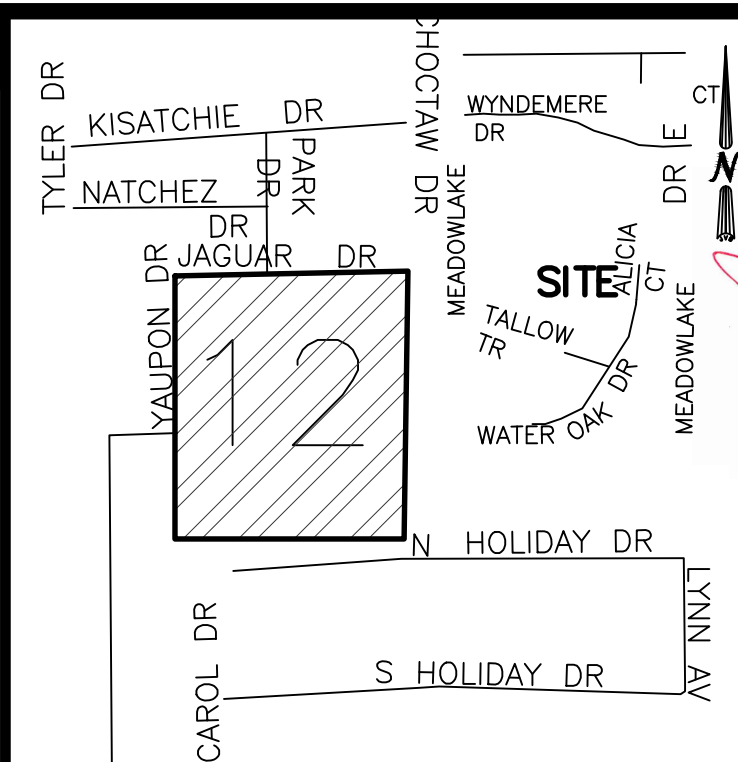
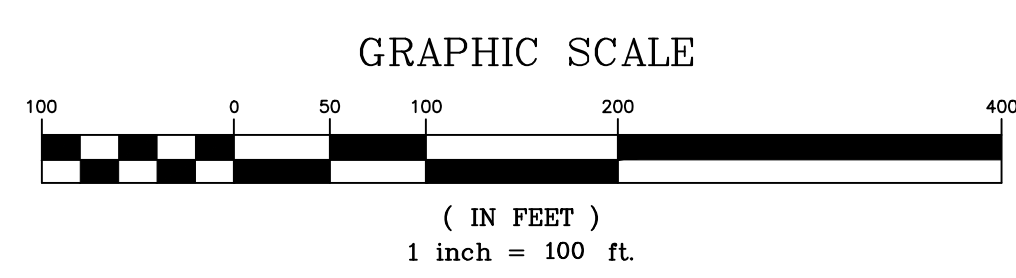
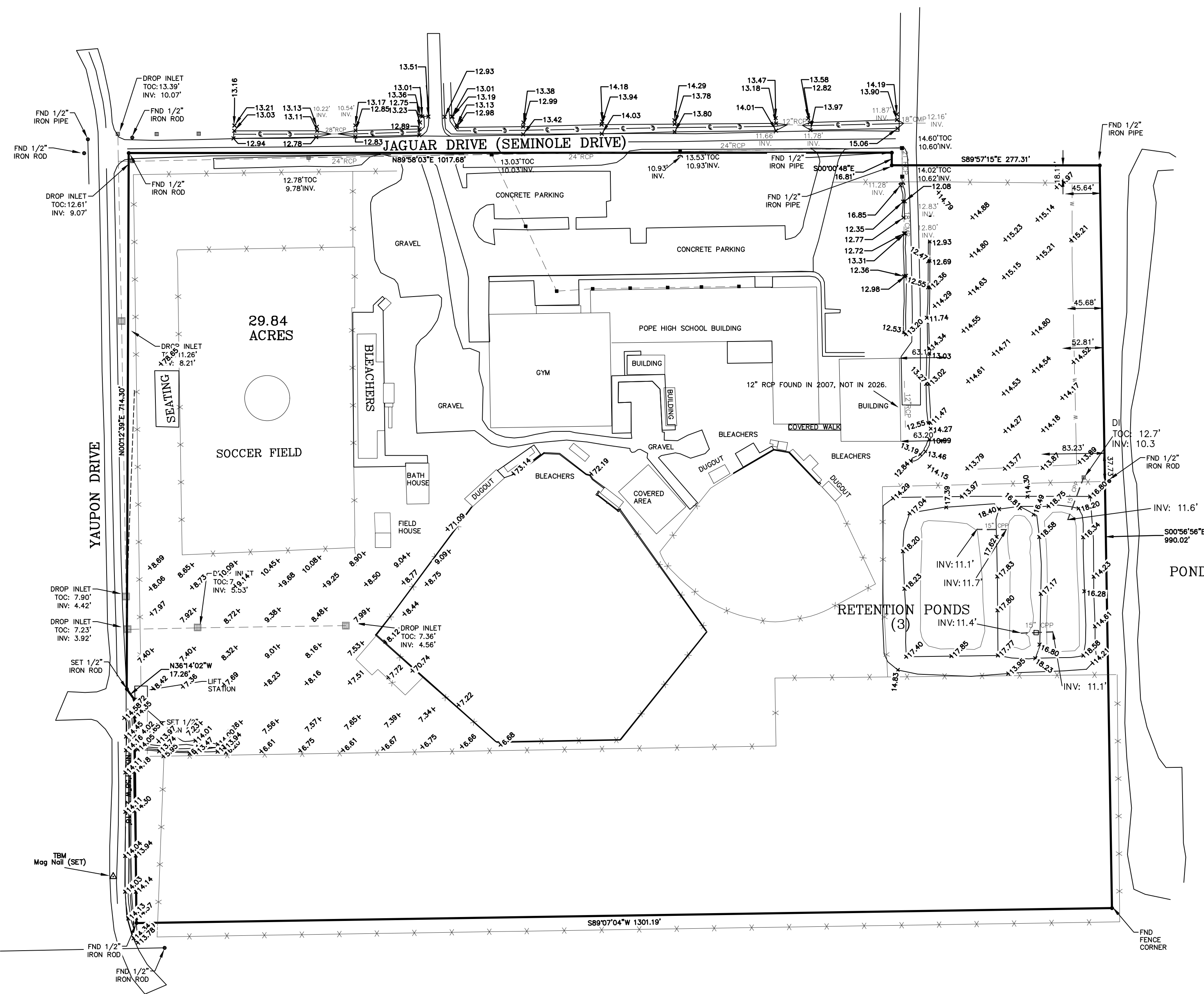


PATHFILE: Z:\SURVING\2024\BOUNDARY SURVEY\TOP-R14\SEC. 12\20240390_POPE JOHN PAUL HS_KB KAUFMAN\DAEMON DETAILS\20240390_STAKING.DWG



VICINITY MAP
NOT TO SCALE

GENERAL NOTES

THE LOCATIONS OF UNDERGROUND UTILITIES AS SHOWN HEREON ARE BASED ON ABOVEGROUND STRUCTURES AND RECORD DRAWINGS PROVIDED THE SURVEYOR. LOCATIONS OF UNDERGROUND UTILITIES OR STRUCTURES MAY VARY FROM LOCATIONS SHOWN HEREON. ADDITIONAL BURIED UTILITIES OR STRUCTURES MAY BE ENCOUNTERED. NO EXCAVATIONS WERE MADE DURING THE PROGRESS OF THIS SURVEY TO LOCATE BURIED UTILITIES OR STRUCTURES.

I HAVE CONSULTED THE FLOOD INSURANCE RATE MAPS AND FOUND THIS PROPERTY IS NOT IN A SPECIAL FLOOD HAZARD AREA.
F.I.R.M. COMMUNITY MAP NO. 220204_0010_G; DATED: 04/21/1999.
FLOOD ZONE: C; BASE FLOOD ELEVATION: N/A

BEARINGS AND COORDINATES SHOWN REFER TO THE LOUISIANA STATE PLANE COORDINATE SYSTEM (LOUISIANA SOUTH 1702).

BASE OF ELEVATIONS: ELEVATIONS SHOWN ARE BASED ON NAVD 1988 WITH GPS RTN ACCESSED ON 12/12/2024. LIDAR TOPOGRAPHY MAP PRODUCED UTILIZED LSCUG CORRS IN CONJUNCTION WITH GROUND OBSERVATIONS TO ENSURE USARS STANDARDS.

T.B.M. = MAG NAIL (SET)
E.L. 10.84'

REFERENCES:
1.) A Survey by John H. Solberger Dated 06/17/1961 Survey # 3045.
2.) A Survey by Ivan Borgen Revised & Dated 09/28/1979 Survey #20,624A
3.) A Limited Topography, by this Firm, Dated 08/28/2007, DWG #20072203

REVISIONS:
1.) Additional Topographic Data Added to Map 03/16/2026

LEGEND

	SEWER MANHOLE, SEWER LINE
	WATER MANHOLE, WATER LINE
	GAS MANHOLE, GAS LINE
	TELE. MANHOLE, TELE. LINE
	DRAIN MANHOLE, DRAIN LINE
	DRAIN INLET, DRAIN LINE
	POWER POLE / OVERHEAD LINES ELECTRIC, TELEPHONE, CABLE TV
	ELEC. TOWER / OVERHEAD LINES
	CATCH BASIN
	LIGHT STANDARD
	TRAFFIC LIGHT
	TELE., ELEC., CATV PEDESTAL
	GAS, WATER, ELECTRIC METER
	GAS, WATER VALVE
	SEWER, DRAIN CLEANOUT
	FIRE HYDRANT
	GUY WIRE ANCHOR
	SIGN
	PYLON
	MAILBOX
	TREE
	SHRUB
	FENCE

2026 ELEVATION DATA



J.V. Burkes & Associates, Inc.
SURVEYING ENGINEERING • ENVIRONMENTAL
1805 Shortcut Highway
Slidell, Louisiana 70458
E-mail: jvbassoc@jvburkes.com
Phone: 985-649-0075 Fax: 985-649-0154

**A PARTIAL TOPOGRAPHIC SURVEY PLAT OF
A 29.84 ACRE PARCEL, AKA
POPE JOHN PAUL HIGH SCHOOL,
IN THE CITY OF SLIDELL, GLD
ST. TAMMANY PARISH, LOUISIANA**

DECLARATION IS MADE TO ORIGINAL PURCHASER OF THE SURVEY. IT IS NOT TRANSFERABLE TO ADDITIONAL INSTITUTIONS OR SUBSEQUENT OWNERS. SURVEY IS VALID ONLY IF PRINT HAS ORIGINAL SEAL OF SURVEYOR.

POPE JOHN PAUL HIGH SCHOOL C/O K.B. KAUFMAN & COMPANY, INC

SCALE: 1" = 100'

DATE: 11/07/2024

DRAWN BY: MAC/GDB CHECKED BY: JDL

DWG. NO. 20240390

SHEET 1 OF 1